

# NE/SE Connectors Alignment and Corridor Study

## Phase B Public Information Meeting

July 30, 2014

SFC Project No: 2013-0014-PW/MS

NMDOT Project No: CN S100120



# Agenda

- Introductions
- Background
- Study Area
- Phase A Alternatives Overview
- Phase B Alternatives
- Traffic Data
- Traffic Control Alternatives
- Study, Design and Construction Tentative Schedule
- Next Steps
- Questions and Answers



# Background

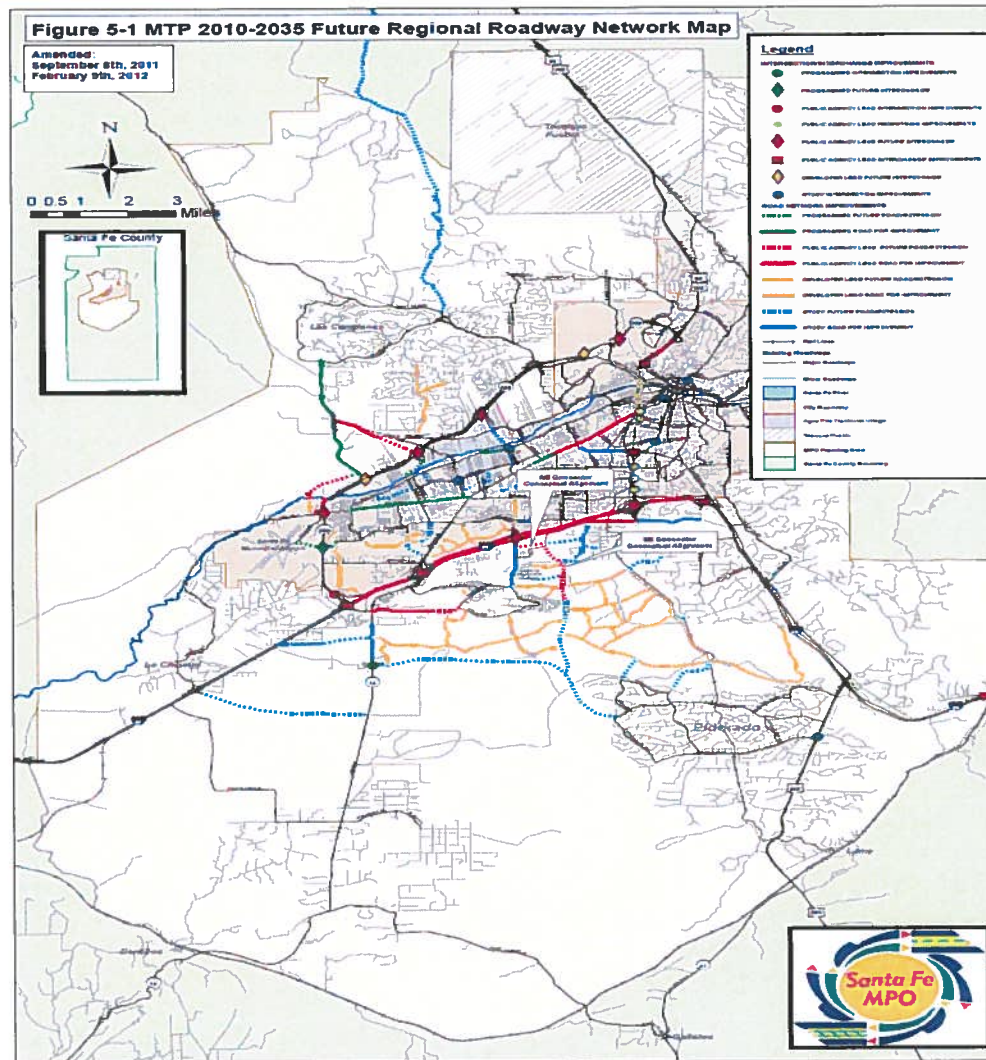
- Agencies
  - Santa Fe County
  - New Mexico Department of Transportation
  - Federal Highway Administration
- What's the purpose of the study?
- Occam Consulting Engineers, Inc.



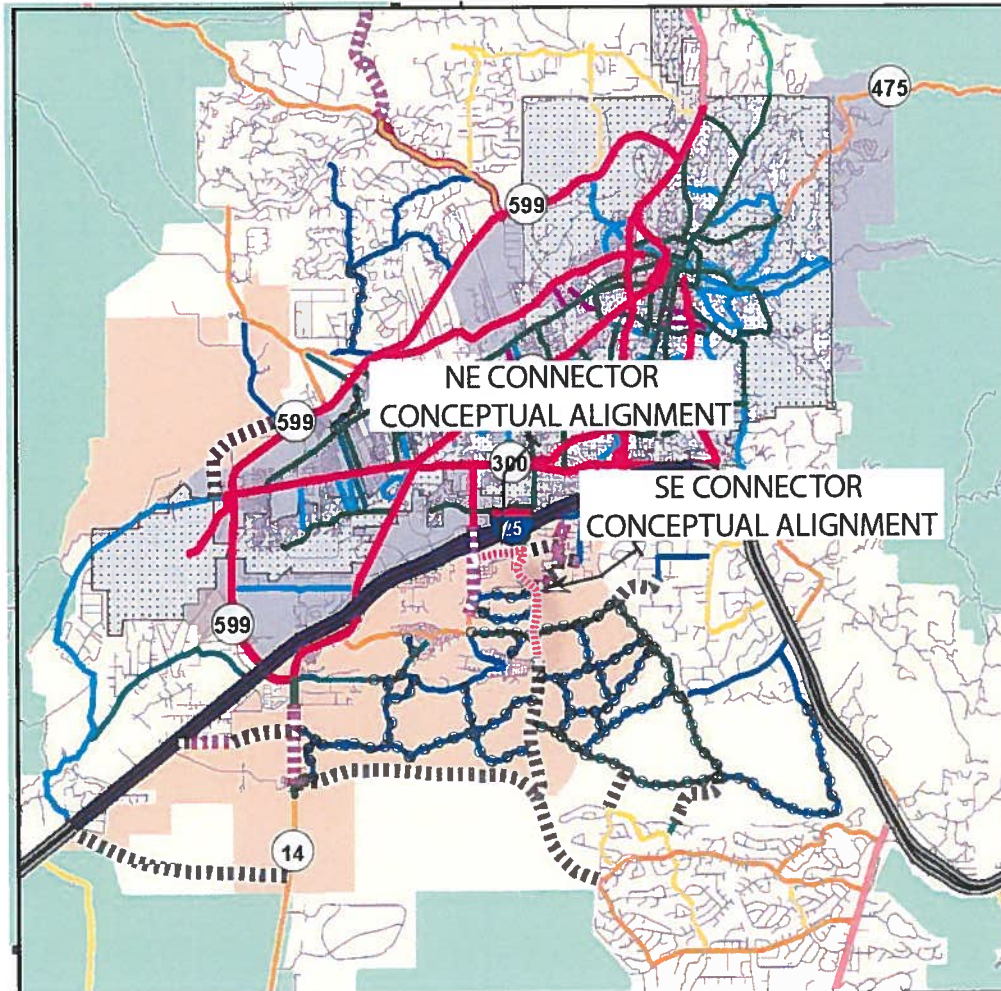




# 2010 MPO Future Roadway Network Map



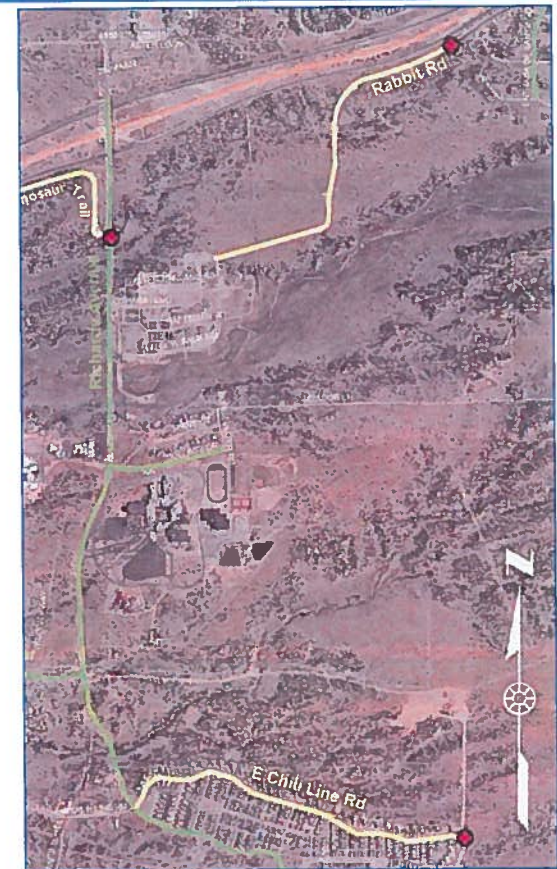
# Santa Fe Co. Sustainable Growth Management – Future Road management



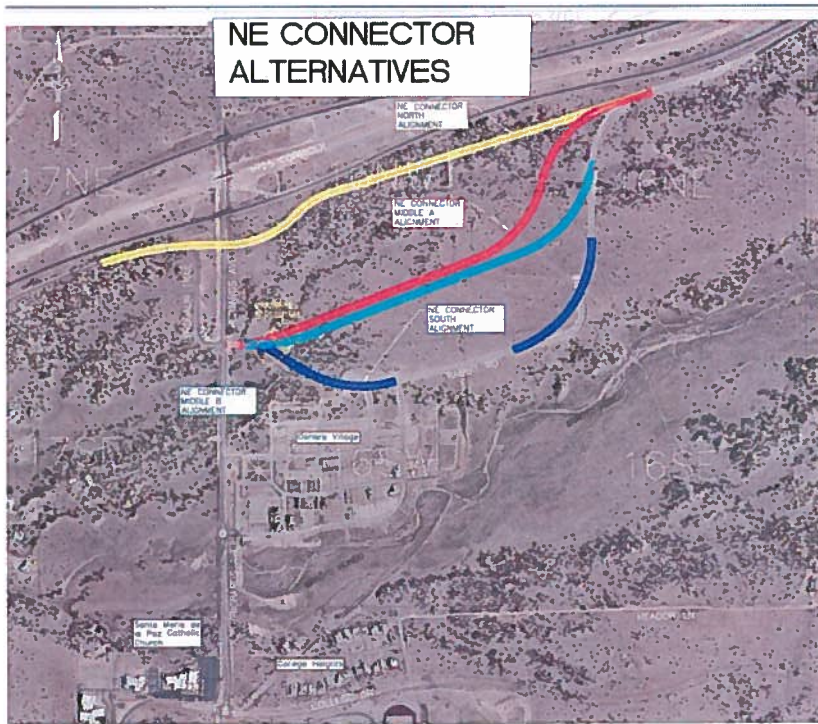


# Study Area

- **Study Area**
- **Tonight's Objective:**  
Hear input from you on the Study Phase B and to provide comment on concept development



# Phase A Alternatives Overview





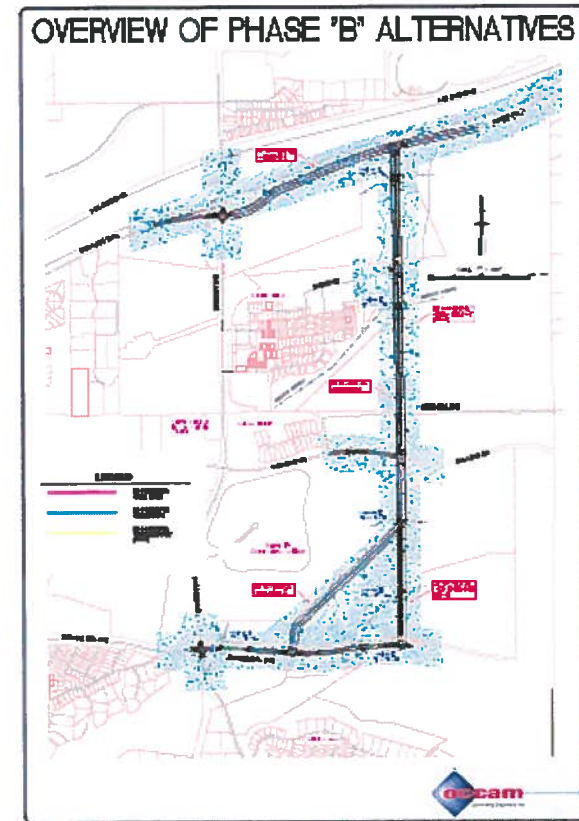
# Traffic Data

- Intersection Peak Hour Counts/Roadway Counts
- Rabbit Road
  - 1,978 WB/1,860 EB (3,838)
- Dinosaur Trail
  - 478 WB/412 EB (890)
- Richards Avenue
  - 5,343 SB/5,616 NB (10,599)
- Traffic Modeling



# Phase B Alternatives

- **NE Connector**
  - *NE North Alignment*
- **SE Connector**
  - *SE Middle Alignment*
  - *SE Straight Alignment*



# Traffic Control Alternatives

- Traditional Intersections

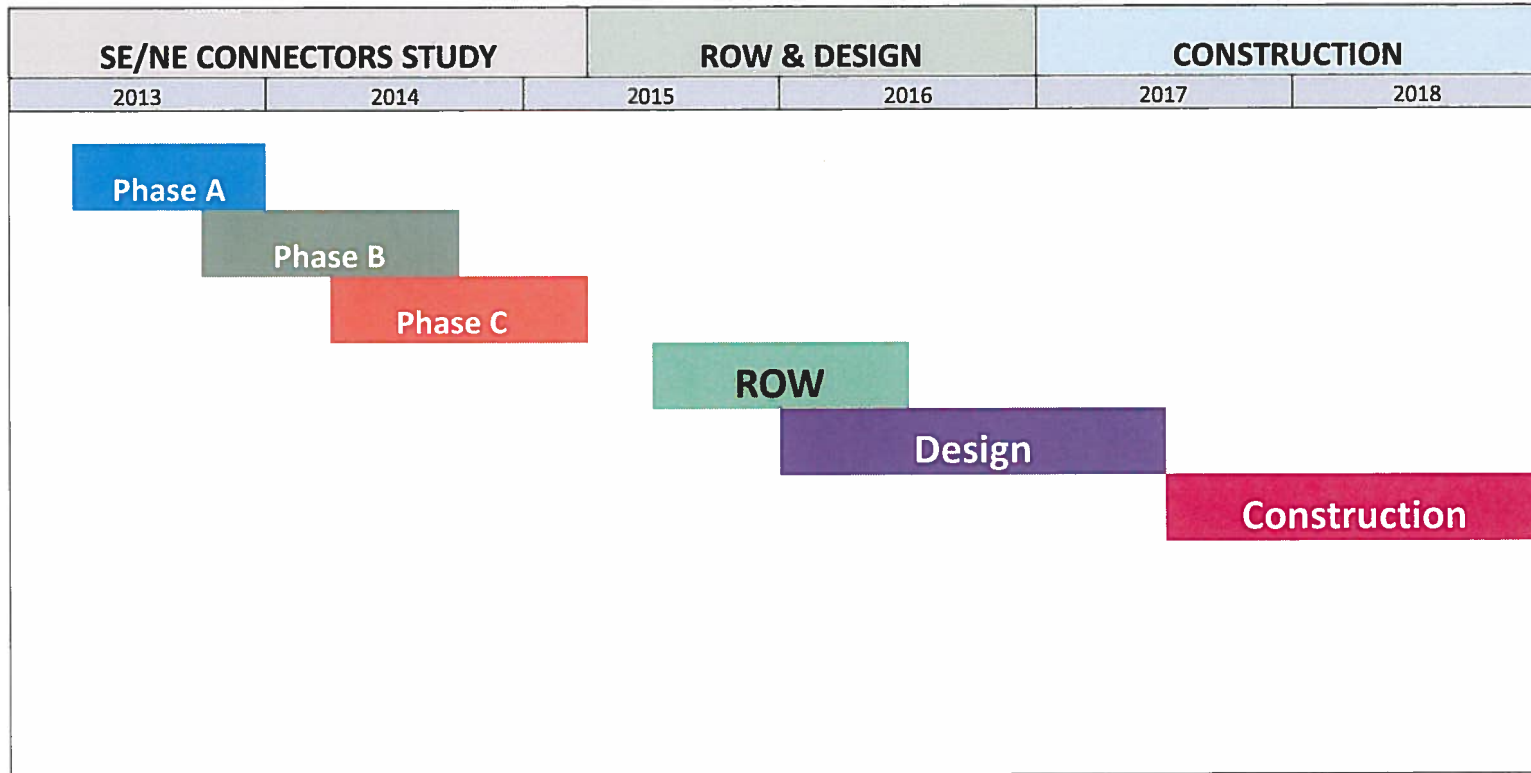


- Modern Roundabouts





# NE/SE Connector Tentative Schedule for Study, Design and Construction



# Next Steps

- Conduct and obtain Phase B public comments
- Conduct Phase B Alternatives Evaluation
- Recommend Preferred NE & SE Alternatives
- Complete Phase C – Environmental
- Complete Study
- Design & Construct
  - SE Connector – Santa Fe County
  - NE Connector – New Mexico Department of Transportation



# Contacts



**Carlos "Chuck" Vigil – Project Manager**

505.992.3018

[cevigil@santafecountynm.gov](mailto:cevigil@santafecountynm.gov)

<http://www.santafecountynm.gov/publicworks>

How to access this page:

It is located under Hot Topics on the homepage or You can select Public Works from the Department tab across the top.



**David Quintana, PE**

505.476.4169

[david.quintana@state.nm.us](mailto:david.quintana@state.nm.us)



**Carlos Ruiz, PE**

505.395.7011/505.690.3019

[cruiz@occam.pro](mailto:cruiz@occam.pro)



# Questions?

