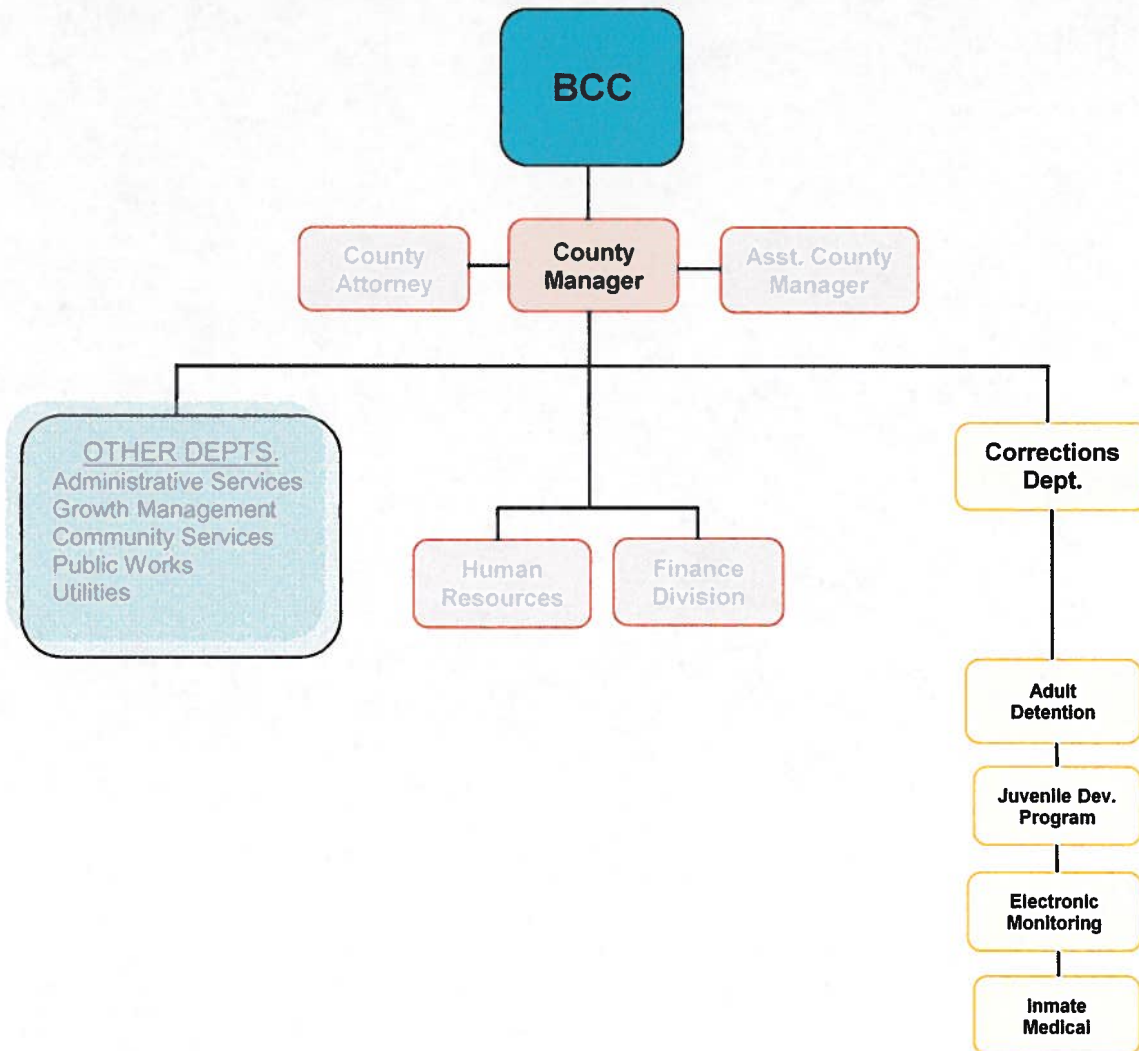


**SANTA FE COUNTY**  
**FISCAL YEAR 2011 BUDGET**



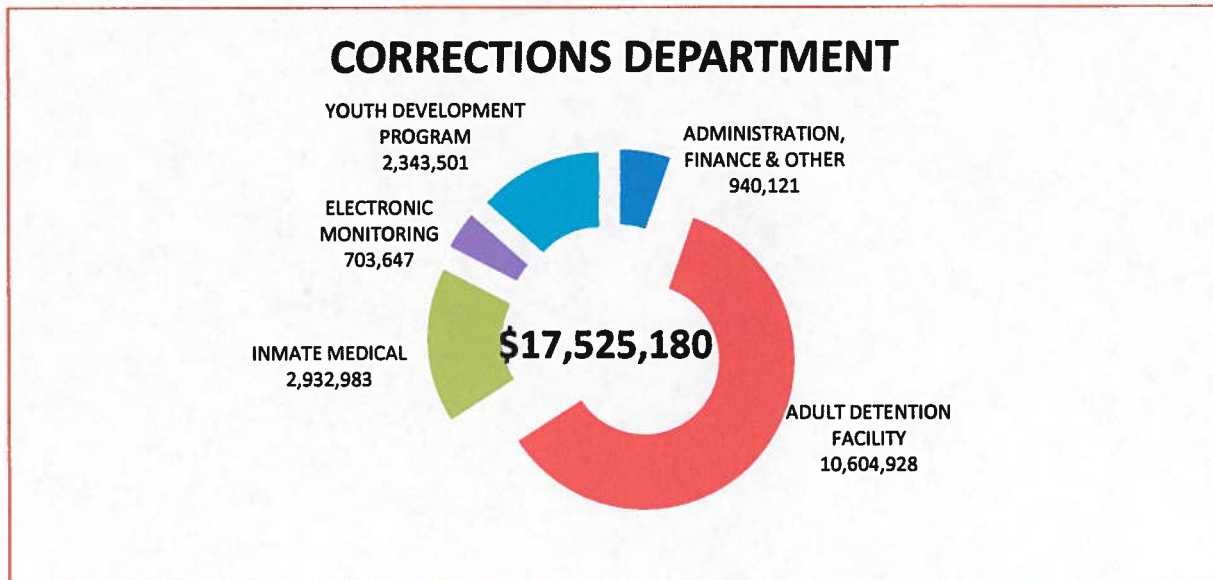
**SECTION VII**  
**ORGANIZATION BUDGETS**  
**PUBLIC SAFETY – CORRECTIONS DEPARTMENT**

CORRECTIONS DEPARTMENT	GENERAL FUND	SPECIAL REVENUES	CAPITAL IMPROVE	DEBT SERVICE	ENTERPRISE FUNDS	FY 2011 TOTAL
ADMINISTRATION, FINANCE & OTHER		940,121				940,121
ADULT DETENTION FACILITY		10604928				10,604,928
INMATE MEDICAL		2,932,983				2,932,983
ELECTRONIC MONITORING		703647				703,647
YOUTH DEVELOPMENT PROGRAM		2343501				2,343,501
<b>TOTAL</b>	<b>0</b>	<b>17,525,180</b>	<b>0</b>	<b>0</b>	<b>0</b>	<b>17,525,180</b>





**SECTION VII**  
**ORGANIZATION BUDGETS**  
**PUBLIC SAFETY – CORRECTIONS DEPARTMENT**



<b>CORRECTIONS DEPARTMENT</b>	<b>FY 2011 BUDGET</b>	<b>FUNDED POSITIONS</b>	<b>FROZEN POSITIONS</b>
<b>ADMINISTRATION</b>			
ADMINISTRATION, FINANCE & OTHER	940,121	12.0	3.0
SUBTOTAL	940,121	12.0	3.0
<b>ADULT DETENTION FACILITY</b>			
ADULT DETENTION FACILITY	10,504,928	154.0	11.0
INMATE WELFARE	100,000		
SUBTOTAL	10,604,928	154.0	11.0
<b>INMATE MEDICAL SERVICES</b>			
INMATE MEDICAL SERVICES	2,932,983	31.2	6.8
SUBTOTAL	2,932,983	31.2	6.8
<b>ELECTRONIC MONITORING</b>			
ELECTRONIC MONITORING	703,647	8.0	1.0
SUBTOTAL	703,647	8.0	1.0
<b>YOUTH DEVELOPMENT PROGRAM</b>			
YOUTH DEVELOPMENT PROGRAM	2,343,501	47.4	22.0
SUBTOTAL	2,343,501	47.4	0.0
<b>TOTAL CORRECTIONS DEPARTMENT</b>	<b>17,525,180</b>	<b>252.6</b>	<b>21.8</b>

**SANTA FE COUNTY**  
**FISCAL YEAR 2011 BUDGET**



**SECTION VII**  
**ORGANIZATION BUDGETS**  
**PUBLIC SAFETY – CORRECTIONS DEPARTMENT**

**Corrections Department**

4250 Airport Rd  
Santa Fe, NM 87507  
(505)428-3100

The Corrections Department works closely with Law Enforcement Agencies, the Courts, the Public Defender's Office, the District Attorney's Office, the New Mexico Department of Children Youth and Families, and the community to provide a range of services to meet the needs of Santa Fe's incarcerated population. We are committed to providing a safe, secure, and humane environment with a variety of services to assist those in detention, whether they are sentenced to the facilities or awaiting transport, trial or sentencing.

**Adult Detention Facility (ADF)**

32 Camino Justicia  
Santa Fe, NM 87508  
(505)471-4941

The mission of the Santa Fe County Adult Detention Facility is to provide quality and professional detention and rehabilitative services. The Facility staff strives to exceed customer expectations, promote human dignity, expect mutual accountability, and balance risk against rewards. Offenders housed at ADF are offered a variety of services to develop skills that can be used upon release such as Adult Basic Education (ABE), adult literacy/library services, creative writing education, English as a Second Language (ESL), General Educational Development (GED), reasoning and rehabilitation, shaken baby syndrome education and parenting skills, substance abuse education and counseling. These services are an important part of rehabilitation and will ultimately lead to a decrease in the number of individuals who choose to re-offend.

**Youth Development Program (YDP)**

4250 Airport Rd  
Santa Fe, NM 87507  
(505)424-5600

The Youth Development Program is dedicated to changing the lives of the youth housed in the facility by providing a safe, structured, caring and learning environment. Through meaningful interaction and role modeling, facility staff strive to develop such character traits of honesty, respect, and accountability. The ultimate goal of YDP is to develop the residents of the facility into productive members of society. In addition to role modeling, this is accomplished through a variety of services including education (public schools, GED, community college), vocational training, counseling, life skills training (e.g. anger management, conflict resolution), independent living skills, Native American Programming (e.g. Inipi/sweat lodge), and religious services.

**Inmate Medical Services**

Medical services are provided to inmates at both the Adult Detention Facility and the Youth Development Program by on-staff, on-site medical personnel as well as by doctors and nurses contracted to provide inmate care. Inmates are medically and psychiatrically evaluated and any care deemed necessary is provided. Services include medical, dental, substance abuse detoxification and mental health services.



**SANTA FE COUNTY**  
**FISCAL YEAR 2011 BUDGET**



**SECTION VII**  
**ORGANIZATION BUDGETS**  
**PUBLIC SAFETY – CORRECTIONS DEPARTMENT**

**Electronic Monitoring**  
4250 Airport Rd  
Santa Fe, NM 87507  
(505)424-5670

Electronic Monitoring provides an inexpensive and non-intrusive alternative to traditional sentencing and incarceration by monitoring offenders by utilizing electronic tracking technology. This program serves juvenile and adult offenders who have demonstrated to the Courts that they require a lower level of supervision than incarceration. It allows them to live at home and continue to work or attend school on an approved schedule which is monitored electronically by a bracelet attached to their ankle. Clients who are on the Electronic Monitoring system are also frequently required to submit to drug and/or alcohol tests. Their progress is evaluated by case managers and progress is reported to the Courts.



**SANTA FE COUNTY**  
**FISCAL YEAR 2011 BUDGET**



**SECTION VII**  
**ORGANIZATION BUDGETS**

**PUBLIC SAFETY – CORRECTIONS DEPARTMENT**  
**BUDGETS BY COST CENTER(S)**

FUND TYPE	SPECIAL REVENUE 247-1801-426			SPECIAL REVENUE 247-1860-426			SPECIAL REVENUE 247-1861-426		
	CORRECTIONS			ADULT DETENTION FACILITY			INMATE WELFARE		
POSITIONS	FILLED	NOT FILLED		FILLED	NOT FILLED		FILLED	NOT FILLED	
CORRECTIONS DEPT. DIR	1		100,709						
CORRECTIONS MANAGER	1		68,557						
CHIEF INVESTIGATOR		1							
AUDITING COMPLIANCE MGR.	1		51,399						
ADMINISTRATIVE MANAGER	1		64,656						
IT SUPPORT SPEC. SENIOR	2		69,594						
SYSTEMS ANALYST	1		54,284						
COMPLIANCE ASST. MANAGER	1		46,349						
SPECIAL PROJ. ADMINISTRATOR	1		53,045						
INVESTIGATOR		1							
RECRUITMENT & RET. SPEC.	1		42,848						
CORRECTIONAL SVCS. LIAISON		1							
ADMINISTRATIVE ASSISTANT	1		33,280						
SECRETARY SENIOR		1							
JAIL ADMINISTRATOR				1		80,268			
DEPUTY JAIL ADMINISTRATOR				1		66,200			
ADMINISTRATIVE ASSISTANT				1		34,871			
VOLUNTEER SVC. PROG. COORD.				1		39,393			
SECRETARY SENIOR				3		103,549			
CLERK II					1				
CLERICAL ASSISTANT				1		26,121			
FINANCE MANAGER					1				
ACCOUNTANT				1		39,866			
ACCOUNTING TECHNICIAN				1		34,871			
ACCOUNTING CLERK SENIOR					1				
MAINTENANCE SUPERVISOR				1		41,101			
MAINTENANCE SPECIALIST				2		57,205			
MAJOR				2		109,225			
PROGRAM MANAGER				1		49,275			
LIEUTENANT				2		98,568			
SHIFT LIEUTENANT				6		295,704			
SHIFT SERGEANT				3		137,833			
SERGEANT/BOOKING				2		91,889			
BOOKING MANAGER				1		50,274			
BOOKING CLERK				7	1	199,933			
RECORDS CLERK				2		56,460			
CLASSIFICATION SUPERVISOR				2		93,601			
CASE MANAGER				6	1	214,221			
COURT LIAISON					1				
TEACHER				1	1	47,694			
DISCIPLINARY HEARING OFFICER				1		37,121			
SERGEANT				9		413,499			
DETENTION OFFICER				70	14	2,472,989			
CORPORAL				10	5	437,516			
MAIL ASSISTANT				1		28,338			
<b>TOTAL POSITIONS</b>	<b>11</b>	<b>4</b>	<b>584,720</b>	<b>139</b>	<b>26</b>	<b>5,357,584</b>	<b>0</b>	<b>0</b>	<b>0</b>

**SANTA FE COUNTY**  
**FISCAL YEAR 2011 BUDGET**



**SECTION VII**  
**ORGANIZATION BUDGETS**

**PUBLIC SAFETY – CORRECTIONS DEPARTMENT**  
**BUDGETS BY COST CENTER(S)**

FUND TYPE	SPECIAL REVENUE 247-1801-426 247-0303-412 ADMIN., FINANCE & OTHER	SPECIAL REVENUE 247-1860-426 ADULT DETENTION FACILITY	SPECIAL REVENUE 247-1861-426 INMATE WELFARE
<b>CORRECTIONS</b>			
<b>BUDGET</b>			
SALARY AND WAGES	584,720	5,357,584	
OVERTIME		627,182	
UNAPPLIED SALARY	(23,594)	276,868	
<b>TOTAL SALARY &amp; WAGES</b>	<b>561,126</b>	<b>6,261,634</b>	
EMPLOYEE BENEFITS	221,842	2,277,082	
VEHICLE EXPENSES	12,500	11,350	
MAINTENANCE	4,750	211,900	
CONTRACTUAL SERVICES	300	731,250	
SUPPLIES	2,850	212,000	
OTHER OPERATING COSTS	46,753	799,712	100,000
CAPITAL EXPENSES	90,000		
<b>COST CENTER TOTAL</b>	<b>940,121</b>	<b>10,504,928</b>	<b>100,000</b>





**SANTA FE COUNTY**  
**FISCAL YEAR 2011 BUDGET**



**SECTION VII**  
**ORGANIZATION BUDGETS**

**PUBLIC SAFETY – CORRECTIONS DEPARTMENT**  
**BUDGETS BY COST CENTER(S)**

FUND TYPE	SPECIAL REVENUE 247-1863-426			SPECIAL REVENUE 247-1865-426			SPECIAL REVENUE 247-1870-426		
	CORRECTIONS			ELECTRONIC MONITORING			YOUTH DEVELOPMENT PROGRAM		
POSITIONS	FILLED	NOT FILLED		FILLED	NOT FILLED		FILLED	NOT FILLED	
MEDICAL DIRECTOR		0.5							
PHARMACY TECHNICIAN	1		41,869						
REG. NURSE ADMINISTRATOR	2		164,311						
NURSE PRACTICIONER	1		110,500						
REGISTERED NURSE	5.6	1	405,079						
LPN	5	2	282,184						
MEDICAL ADMINISTRATOR	1		68,958						
DENTIST	0.3		43,680						
DENTAL ASSISTANT	1		35,693						
PSYCHIATRIST	1.3	1.3	242,866						
THERAPIST	6	5	316,190						
MENTAL HEALTH MANAGER	1		78,466						
MEDICAL RECORDS TECHNICIAN	1		31,496						
PHYSICIANS ASSISTANT	1		102,898						
SOCIAL WORKER	1		46,340						
PROGAM MANAGER				1		48,810			
SENIOR CASE MANAGER				1		43,709			
BAIL BOND CASE MANAGER				5		167,764			
BAIL BOND ADMINISTRATOR					1				
SECRETARY SENIOR				1		34,611			
ACCOUNTING CLERK SENIOR								1	
ADMINISTRATIVE ASSISTANT							1		35,536
DEPARTMENT ADMINISTRATOR								1	
SHIFT SUPERVISOR							3	5	130,023
CASE MANAGER							1	1	38,823
ASSISTANT SHIFT SUPERVISOR							4	3.5	163,600
LIFE SKILLS WORKER I							12	10	249,816
ASSOCIATE LIBRARIAN								0.5	
LIFE SKILLS WORKER II							2	11	71,315
RECREATION/VOL. COORDINATOR								1	
UNIT MANAGER								1	
MAINTENANCE TECH. SENIOR							1		41,342
MAINTENANCE TECHNICIAN								1	
SR. NIGHT SHIFT SUPERVISOR								1	
YOUTH SERVICES DEP. ADMIN.							1		56,160
TEACHER							1		45,457
TRAINING COORDINATOR								1	
SENIOR SHIFT SUPERVISOR							2		98,281
YOUTH SERVICES ADMINISTRATOR								1	
CUSTODIAN							1		24,854
SECRETARY SENIOR								2	
<b>TOTAL POSITIONS</b>	<b>28</b>	<b>9.8</b>	<b>1,970,529</b>	<b>8</b>	<b>1</b>	<b>294,894</b>	<b>29</b>	<b>41</b>	<b>955,207</b>

**SANTA FE COUNTY**  
**FISCAL YEAR 2011 BUDGET**



**SECTION VII**  
**ORGANIZATION BUDGETS**

**PUBLIC SAFETY – CORRECTIONS DEPARTMENT**  
**BUDGETS BY COST CENTER(S)**

FUND TYPE	SPECIAL REVENUE 247-1863-426	SPECIAL REVENUE 247-1865-426	SPECIAL REVENUE 247-1870-426
CORRECTIONS	INMATE MEDICAL SERVICES	ELECTRONIC MONITORING	YOUTH DEVELOPMENT PROGRAM
<b>BUDGET</b>			
SALARY AND WAGES	1,970,529	294,894	955,207
OVERTIME	135,000	15,000	105,000
UNAPPLIED SALARY	(203,980)	2,571	244,793
<b>TOTAL SALARY &amp; WAGES</b>	<b>1,901,549</b>	<b>312,465</b>	<b>1,305,000</b>
EMPLOYEE BENEFITS	644,816	105,037	527,430
VEHICLE EXPENSES		1,700	3,725
MAINTENANCE		700	58,500
CONTRACTUAL SERVICES	155,000	246,000	184,750
SUPPLIES	34,000	23,700	21,500
OTHER OPERATING COSTS	197,618	14,045	242,596
CAPITAL EXPENSES			
<b>COST CENTER TOTAL</b>	<b>2,932,983</b>	<b>703,647</b>	<b>2,343,501</b>





**SANTA FE COUNTY**  
**FISCAL YEAR 2011 BUDGET**



**SECTION VII**  
**ORGANIZATION BUDGETS**

