

# Santa Fe County

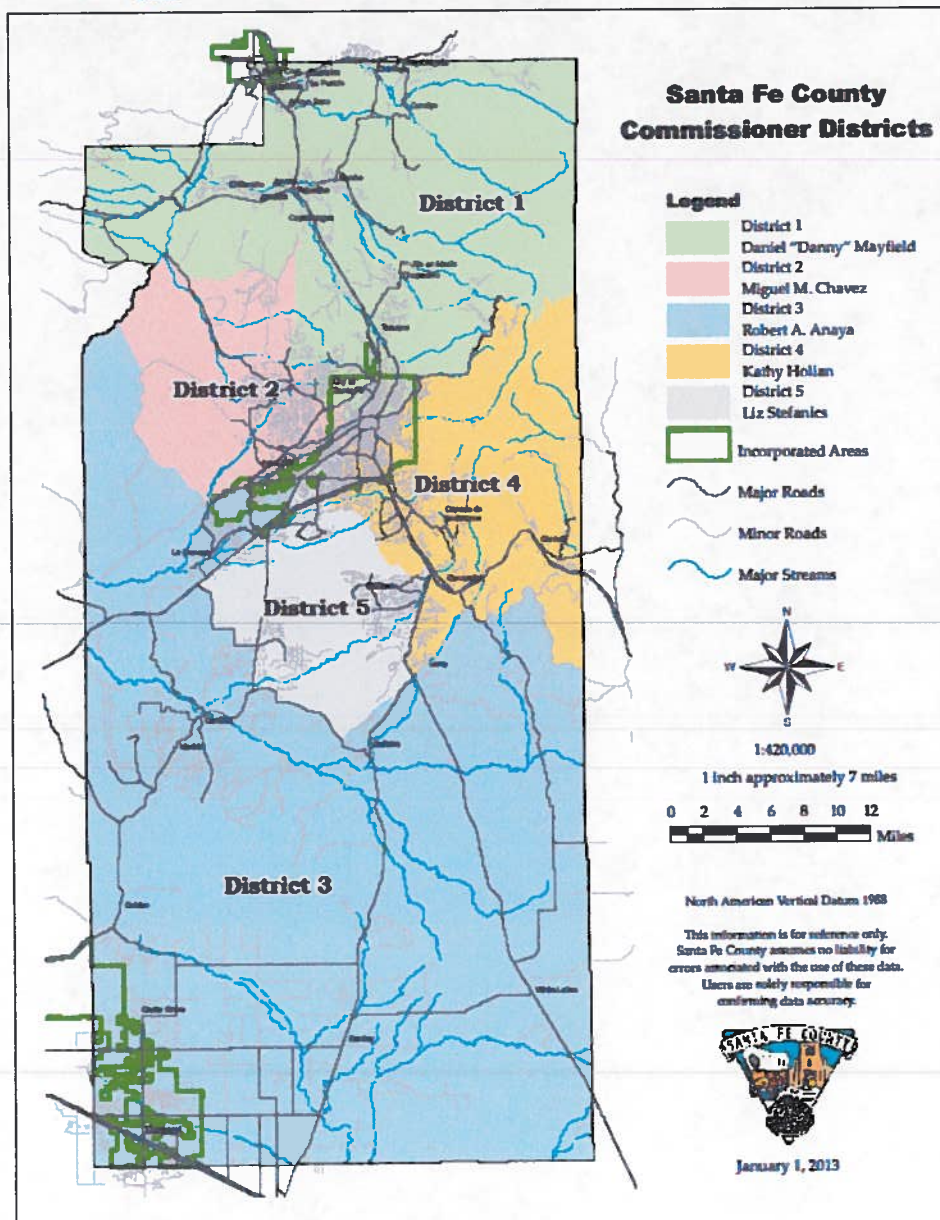
## Fiscal Year 2014 Budget

### Supplemental Information



102 Grant Avenue  
 PO Box 276  
 Santa Fe, New Mexico 87504-7028  
 Phones: 505-986-6200 and 1-800-894-7028  
 Fax: 505-986-6206  
 Site: [www.santafecountynm.gov](http://www.santafecountynm.gov)

### BOARD OF COUNTY COMMISSIONERS' DISTRICTS



# Santa Fe County

## Fiscal Year 2014 Budget

### Supplemental Information



#### COUNTY COMMISSIONERS AND COMMITTEE ASSIGNMENTS



District 1

Daniel "Danny" Mayfield – (D) 2011-2014  
505-986-6200, [dmayfield@santafecountynm.gov](mailto:dmayfield@santafecountynm.gov)

Constituent Services Liaison:

Juan Rios

505-986-6328, [jrios@santafecountynm.gov](mailto:jrios@santafecountynm.gov)

**Committee Assignments:**

Board of Finance  
Buckman Direct Diversion Board (BDD) -Alternate  
Housing Authority Board  
Extraterritorial Land Use Authority (ELUA)  
Indigent Hospital and Healthcare Board  
Investment Committee  
North Central NM Economic Dev. District - Alternate  
North Central Regional Transit District (NCRTD)-Alternate  
Regional Coalition of LANL Communities  
Solid Waste Management Agency (SWMA)

District 2

Miguel M. Chavez – (D) 2013-2016

505-995-2755, [vvigil@santafecountynm.gov](mailto:vvigil@santafecountynm.gov)

Constituent Services Liaison:

Rita Maes

505-995-9548, [rbmaes@santafecountynm.gov](mailto:rbmaes@santafecountynm.gov)

**Committee Assignments:**

Board of Finance  
Buckman Direct Diversion Board (BDD)  
Extraterritorial Land Use Authority (ELUA)  
Housing Authority Board  
Indigent Hospital and Healthcare Board  
Metropolitan Planning Organization (MPO)  
North Central NM Economic Dev. District – 2<sup>nd</sup> Alternate  
North Central Regional Transit District (NCRTD) - Alternate  
Regional Coalition of LANL Communities - Alternate  
Solid Waste Management Agency (SWMA)





# Santa Fe County

## Fiscal Year 2014 Budget

### Supplemental Information



### COUNTY COMMISSIONERS AND COMMITTEE ASSIGNMENTS



District 3

Robert A. Anaya – (D) 2011-2014

505-986-6200, [ranaya@santafecountynm.gov](mailto:ranaya@santafecountynm.gov)

Constituent Services Liaison:

Christopher Barela

505-986-6377, [cmbarela@santafecountynm.gov](mailto:cmbarela@santafecountynm.gov)

**Committee Assignments:**

Board of Finance

Extraterritorial Land Use Authority (ELUA)

Housing Authority Board

Indigent Hospital and Healthcare Board

Metropolitan Planning Organization (MPO)

North Central Regional Transit District (NCRTD)

Regional Coalition of LANL Communities – 2<sup>nd</sup> Alternate

Solid Waste Management Agency (SWMA) - Alternate

District 4

Kathy Holian – (D) 2008-2012, 2013-2016

505-986-6200, [kholian@santafecountynm.gov](mailto:kholian@santafecountynm.gov)

Constituent Services Liaison:

Tina Salazar

505-986-6319, [tsalazar@santafecountynm.gov](mailto:tsalazar@santafecountynm.gov)

**Committee Assignments:**

Board of Finance

Buckman Direct Diversion Board (BDD)

Extraterritorial Land Use Authority (ELUA) - Alternate

Housing Authority Board

Indigent Hospital and Healthcare Board

Investment Committee

Metropolitan Planning Organization (MPO) - Alternate

North Central Regional Transit District

Solid Waste Management Agency (SWMA)



# Santa Fe County

## Fiscal Year 2014 Budget

### Supplemental Information



### COUNTY COMMISSIONERS AND COMMITTEE ASSIGNMENTS



District 5

Liz Stefanics – (D) 2009-2012

505-986-6210, [lstafanics@santafecounty.org](mailto:lstafanics@santafecounty.org)

Constituent Services Liaison:

Julia Valdez

505-986-6202, [javaldez@santafecounty.org](mailto:javaldez@santafecounty.org)

#### Committee Assignments:

Board of Finance

Extraterritorial Land Use Authority (ELUA)

Housing Authority Board

Indigent Hospital and Healthcare Board

Metropolitan Planning Organization (MPO)

North Central NM Economic Development District

