

THE BOARD OF COUNTY COMMISSIONERS OF
SANTA FE COUNTY, NEW MEXICO

ORDINANCE NO. 2021- 07

AN ORDINANCE

ADOPTING THE 2021 REDISTRICTING PLAN FOR SANTA FE COUNTY COMMISSION DISTRICTS BASED UPON 2020 U.S. CENSUS; REASSIGNING PRECINCTS TO THE FIVE COMMISSION DISTRICTS IN ACCORDANCE WITH THE REDISTRICTING PLAN; AMENDING ORDINANCE NO. 1989-10; AND REPEALING ORDINANCE NO. 2011-8

BE IT ENACTED BY THE BOARD OF COUNTY COMMISSIONERS OF SANTA FE COUNTY:

1. **Findings.**

a. Santa Fe County Ordinance No. 1989-10 increased the size of the Board of County Commissioners (Board) of Santa Fe County (County) from three members to five members and divided the County into five County commission districts.

b. Santa Fe County Ordinance No. 2011-8 amended Ordinance No. 1989-10 by reassigning precincts to the five commission districts, in accordance with the 2010 U.S. Census.

c. The lines dividing and setting forth the five commission districts for the County should be redrawn in accordance with the 2020 U.S. Census.

2. **Repeal.** This Ordinance repeals and replaces Ordinance No. 2011-8.

3. **Adoption of the 2021 Redistricting Plan.** The 2021 Redistricting Plan attached hereto as Exhibit A is hereby adopted.

4. **Amendment of Ordinance No. 1989-10.** Ordinance No. 1989-10, Section 2 is hereby deleted, and the following is inserted in its place to implement the 2021 Redistricting Plan adopted in Section 2:

“SECTION 2
COUNTY COMMISSION DISTRICTS

Section 2.1, NUMBERS: As of the first day of January, 2022, the County shall be divided by precinct into five compact, contiguous, and substantially equally populated county commission districts as follows:

Section 2.2, DISTRICT 1: County Commission District ONE shall be comprised of the following precincts: 1, 2, 3, 4, 5, 6, 7, 8, 10, 20, 21, 22, 23, 25, 26, 27, 28, 30, 40, 58, 59, 60, 61, 79, 83, 87, 91, 95, 118, 119, 121, 122, 123, 128, 131, 147, 158, 169, and 172.

Section 2.3, DISTRICT 2: County Commission District TWO shall be comprised of the following precincts: 11, 24, 31, 32, 33, 34, 64, 66, 67, 80, 82, 90, 92, 97, 98, 106, 108, 109, 135, 136, 137, 138, 140, 146, 152, 153, 155, 159, 160, 174, 177, 178, and 179.

Section 2.4, DISTRICT 3: County Commission District THREE shall be comprised of the following precincts: 12, 15, 16, 17, 18, 19, 62, 72, 73, 75, 84, 85, 86, 89, 93, 114, 115, 116, 125, 141, 145, 148, 149, 151, 154, 156, 157, 170, and 176.

Section 2.5, DISTRICT 4: County Commission District FOUR shall be comprised of the following precincts: 9, 13, 29, 36, 37, 41, 42, 43, 44, 45, 46, 47, 48, 51, 52, 53, 54, 55, 57, 63, 68, 77, 81, 94, 100, 101, 102, 103, 104, 117, 120, 124, 127, 129, 130, 132, 161, 162, 163, 164, 165, and 171.


Section 2.6, DISTRICT 5: County Commission District FIVE shall be comprised of the following precincts: 14, 35, 38, 39, 49, 50, 56, 65, 69, 70, 71, 74, 76, 78, 88, 96, 99, 105, 107, 110, 111, 112, 113, 126, 133, 134, 139, 142, 143, 144, 150, 166, 167, 168, 173, and 175.

Section 2.7, PRECINCT CHANGES: Should a County precinct be divided, combined with another precinct, be renumbered, or have its boundaries adjusted, references in this Section 2 to that precinct shall be deemed to be to the divided, combined, renumbered, or adjusted precinct(s), as the case may be."

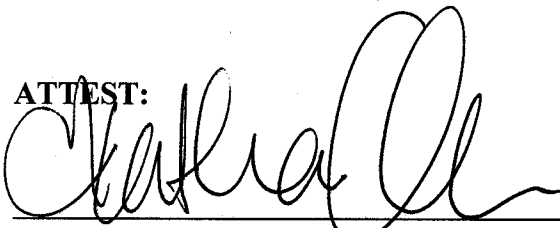
5. **Effective Date.** This Ordinance shall become effective on January 1, 2022.

PASSED AND ENACTED THIS 30th DAY OF NOVEMBER, 2021.

**THE BOARD OF COUNTY COMMISSIONERS
OF SANTA FE COUNTY, NEW MEXICO**


By 
Henry P. Roybal, Chairperson

ATTEST:


Katharine E. Clark
County Clerk



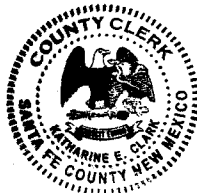
APPROVED AS TO FORM:



Gregory S. Shaffer, County Attorney

COUNTY OF SANTA FE)
STATE OF NEW MEXICO) ss

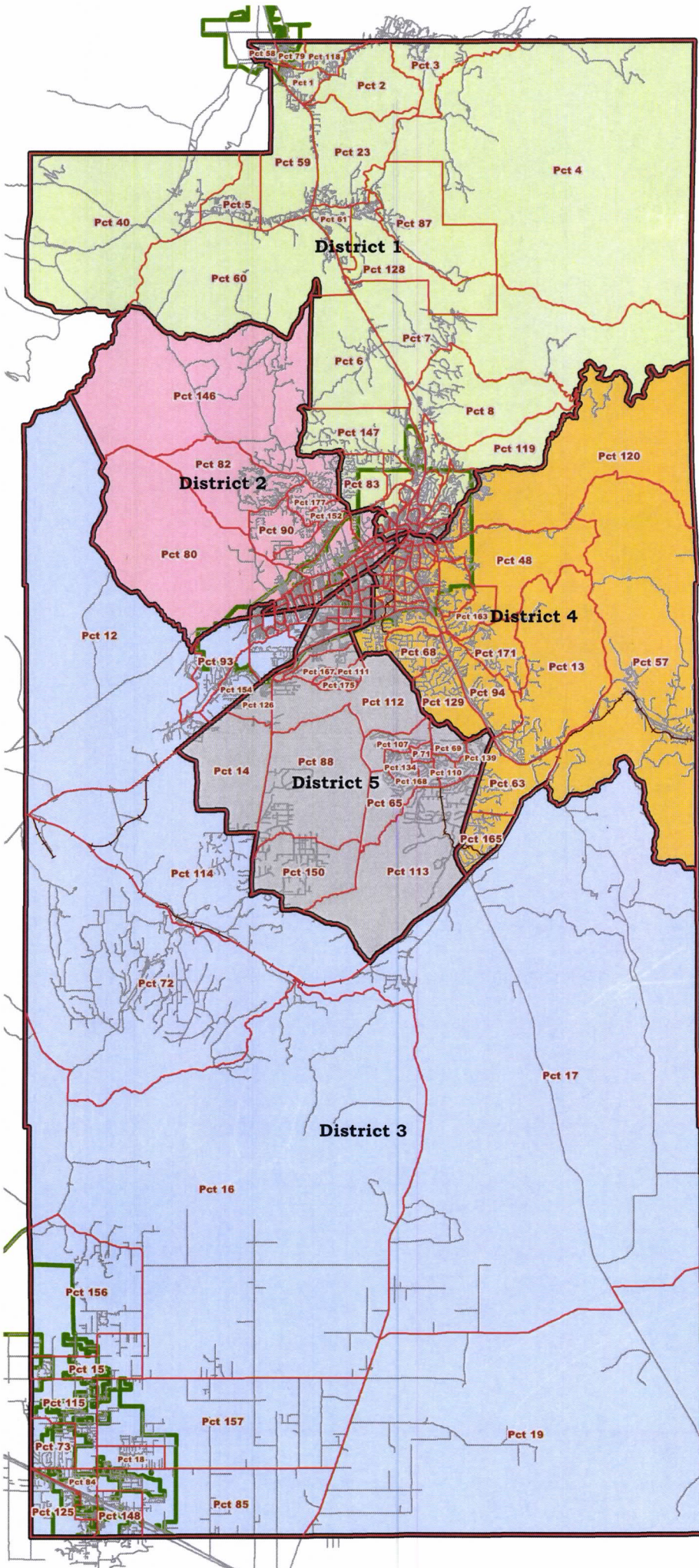
BCC ORDINANCE
PAGES: 4

I Hereby Certify That This Instrument Was Filed for
Record On The 1ST Day Of December, 2021 at 09:44:55 AM
And Was Duly Recorded as Instrument # **1973175**
Of The Records Of Santa Fe County



Witness My Hand And Seal Of Office
Katharine E. Cla
Deputy  County Clerk, Santa Fe, NM

**Exhibit A to
Ordinance No. 2021-07
Page 1 of 2
Santa Fe County
2021 Redistricting Plan**



Legend

2021 Redistricting Plan

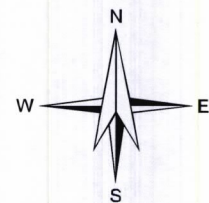
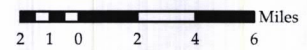
- District 1
- District 2
- District 3
- District 4
- District 5
- 2022 Precinct Boundaries
- Incorporated Areas
- Roads
- Railroads

No changes to Commission District precincts outside the City of Santa Fe.

See City of Santa Fe Detail Map, Exhibit A, Page 2, for detail of Commission Districts precincts within the City of Santa Fe.

1:260,000

1 inch approximately 4 miles



North American Datum 1983

This information is for reference only. Santa Fe County assumes no liability for errors associated with the use of these data. Users are solely responsible for confirming data accuracy.



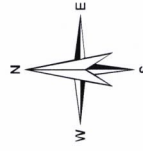
November 30, 2021

**Exhibit A to
Ordinance No. 2021-07,
Page 2 of 2
Santa Fe County
2021 Redistricting Plan
City of Santa Fe Detail Map**

Legend

- 2021 Redistricting Plan
 - District 1
 - District 2
 - District 3
 - District 4
 - District 5
- 2022 Precinct Boundaries
- Incorporated Areas
- Roads
- Railroads

1:63,360
1 inch represents 1 mile



North American Datum 1983

This information is for reference only.
Santa Fe County assumes no liability for
errors associated with the use of these data.
Users are solely responsible for
confirming data accuracy.

