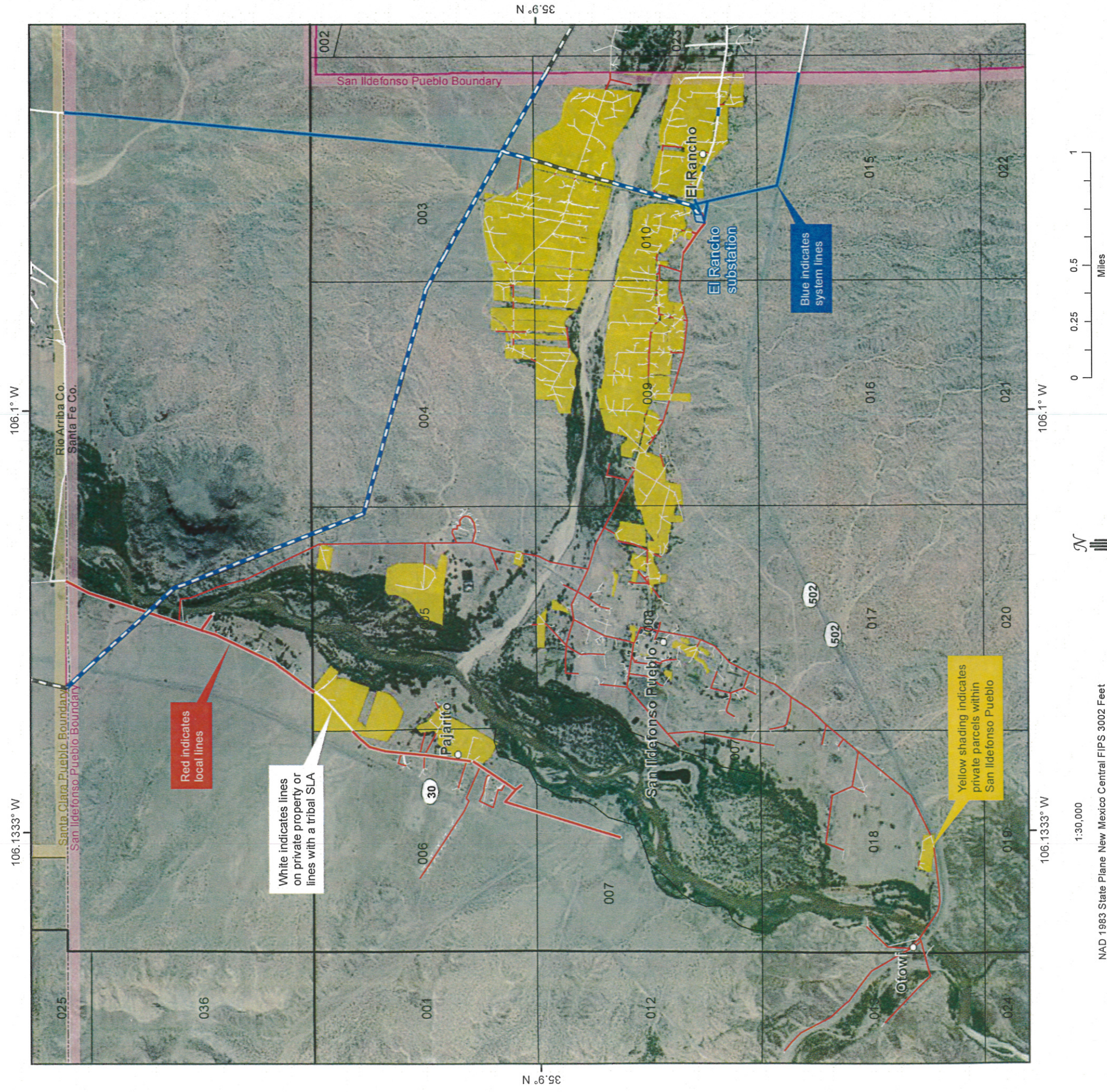


# JMEC Facilities on San Ildefonso Pueblo Tribal Lands

San Ildefonso Pueblo, Santa Fe County, New Mexico

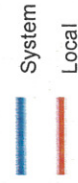


## JMEC Power Distribution Facilities

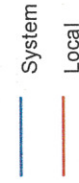
69kv Transmission Lines



3-Phase Distribution Lines



1 & 2-Phase Distribution Lines



## JMEC Facilities on San Ildefonso Pueblo Tribal Land

Line Type	System		Local		Total	
	Line Miles	ROW Acres	Line Miles	ROW Acres	Line Miles	ROW Acres
Transmission <sup>1</sup>	4.25	20.61	-	-	4.25	20.61
3-Phase <sup>2</sup>	3.14	7.53	2.98	7.12	6.12	14.65
1 & 2-Phase <sup>2</sup>	-	-	14.81	35.02	14.81	35.02
Underground <sup>2</sup>	-	-	1.30	3.05	1.30	3.05
Substations	-	0.84	-	-	-	0.84
Guys	-	1.66	-	2.59	-	4.25
<b>Total</b>	<b>7.40</b>	<b>30.64</b>	<b>19.09</b>	<b>47.79</b>	<b>26.48</b>	<b>78.43</b>
		<b>39.07%</b>		<b>60.93%</b>		<b>100%</b>

System	Local
--------	-------

Lines that benefit the entire JMEC customer base

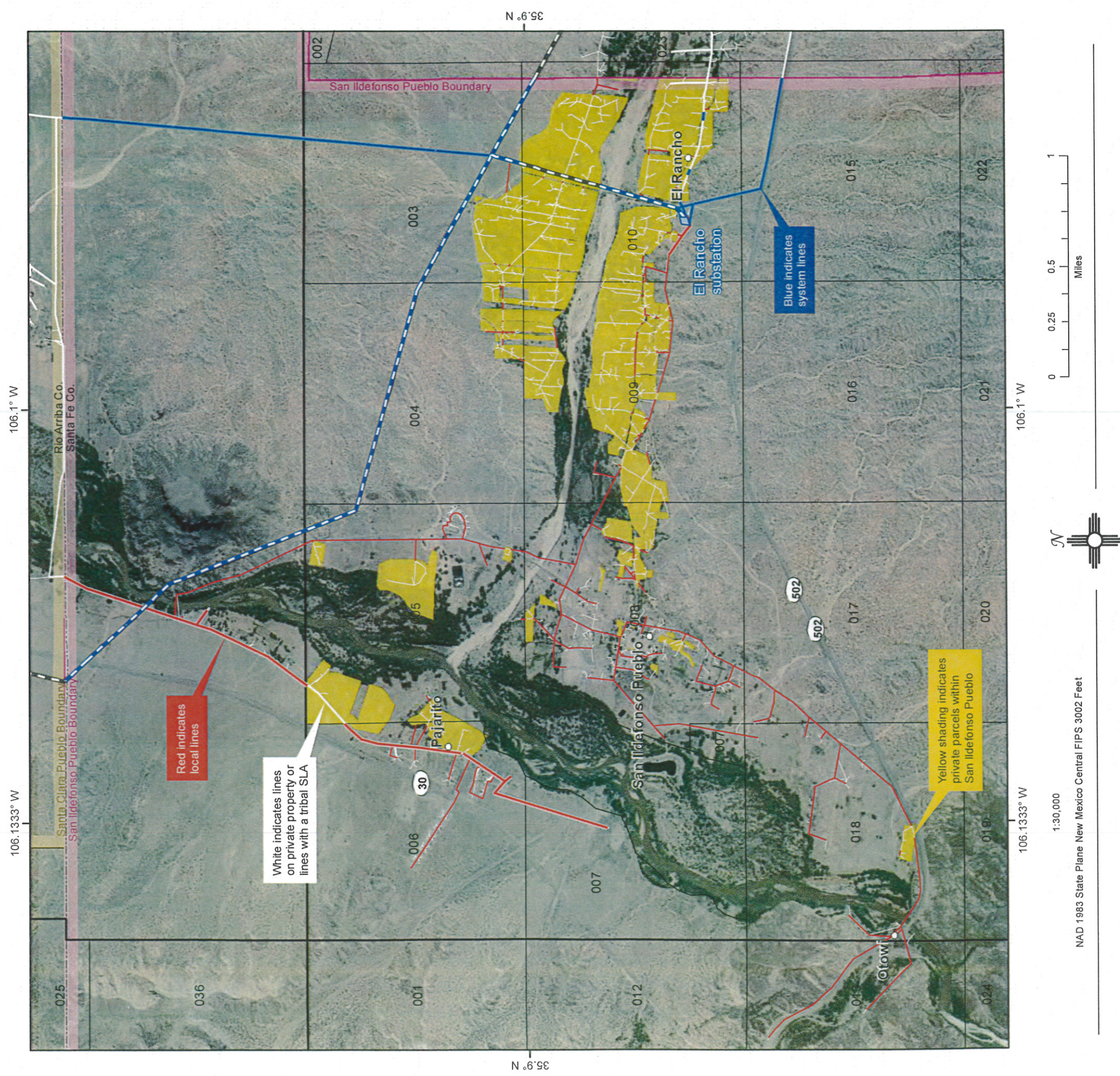
Lines that primarily benefit local customers within San Ildefonso's geographical boundaries

<sup>1</sup> 40 ft ROW    <sup>2</sup> 20 ft ROW

NAD 1983 State Plane New Mexico Central FIPS 3002 Feet

# JMEC Facilities on San Ildefonso Pueblo Tribal Lands

San Ildefonso Pueblo, Santa Fe County, New Mexico



## JMEC Power Distribution Facilities

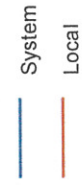
69kv Transmission Lines



3-Phase Distribution Lines



1 & 2-Phase Distribution Lines



## JMEC Facilities on San Ildefonso Pueblo Tribal Land

Line Type	System		Local		Total	
	Line Miles	ROW Acres	Line Miles	ROW Acres	Line Miles	ROW Acres
Transmission <sup>1</sup>	4.25	20.61	-	-	4.25	20.61
3-Phase <sup>2</sup>	3.14	7.53	2.98	7.12	6.12	14.65
1 & 2-Phase <sup>2</sup>	-	-	14.81	35.02	14.81	35.02
Underground <sup>2</sup>	-	-	1.30	3.05	1.30	3.05
Substations	-	0.84	-	-	-	0.84
Guys	-	1.66	-	2.59	-	4.25
<b>Total</b>	<b>7.40</b>	<b>30.64</b>	<b>19.09</b>	<b>47.79</b>	<b>26.48</b>	<b>78.43</b>
		<b>39.07%</b>		<b>60.93%</b>		<b>100%</b>

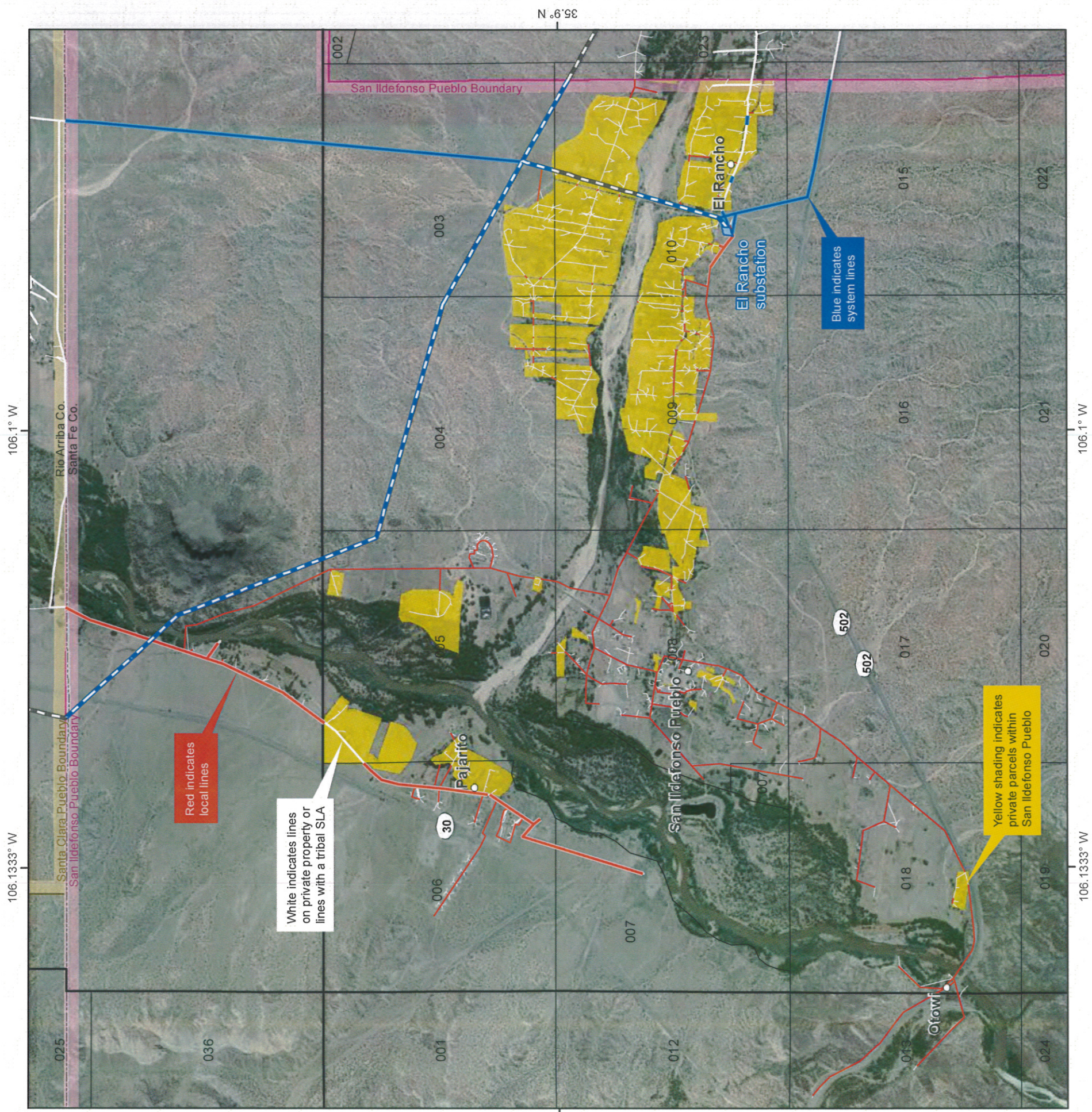
<sup>1</sup> 40 ft ROW    <sup>2</sup> 20 ft ROW

System Lines that benefit the entire JMEC customer base

Local Lines that primarily benefit local customers within San Ildefonso's geographical boundaries

# JMEC Facilities on San Ildefonso Pueblo Tribal Lands

San Ildefonso Pueblo, Santa Fe County, New Mexico



## JMEC Power Distribution Facilities

### 69kv Transmission Lines

System

### 3-Phase Distribution Lines

System

Local

### 1 & 2-Phase Distribution Lines

System

Local

## JMEC Facilities on San Ildefonso Pueblo Tribal Land

Line Type	System		Local		Total	
	Line Miles	ROW Acres	Line Miles	ROW Acres	Line Miles	ROW Acres
Transmission <sup>1</sup>	4.25	20.61	-	-	4.25	20.61
3-Phase <sup>2</sup>	3.14	7.53	2.98	7.12	6.12	14.65
1 & 2-Phase <sup>2</sup>	-	-	14.81	35.02	14.81	35.02
Underground <sup>2</sup>	-	-	1.30	3.05	1.30	3.05
Substations	-	0.84	-	-	-	0.84
Guys	-	1.66	-	2.59	-	4.25
<b>Total</b>	<b>7.40</b>	<b>30.64</b>	<b>19.09</b>	<b>47.79</b>	<b>26.48</b>	<b>78.43</b>
		<b>39.07%</b>		<b>60.93%</b>		<b>100%</b>

<sup>1</sup> 40 ft ROW <sup>2</sup> 20 ft ROW

**System** Lines that benefit the entire JMEC customer base

**Local** Lines that primarily benefit local customers within San Ildefonso's geographical boundaries