

## ARROYO HONDO OPEN SPACE

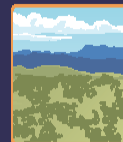
The Arroyo Hondo Open Space is an 86 acre property owned and maintained by Santa Fe County through the Open Space & Trails program. The parcel is located southeast of Santa Fe. The Arroyo Hondo, a seasonal stream, flows along the southern boundary of the parcel and Interstate 25 is the eastern boundary. The trail head is accessible from the north east boundary off East Old Agua Fria Road and open from dawn to dusk. Hikers, equestrians, and bicyclists are welcome to enjoy the approximately 3 mile trail loop. Dogs are also welcome but please keep them on a leash and clean up after your pet.



Enjoy the wildflowers and remember to take only photos and leave only footprints!

SANTA FE COUNTY OPEN SPACE & TRAILS

P.O. Box 276  
Santa Fe, NM 87504  
Phone: 505-992-9873  
E-mail: [explore@santafecounty.org](mailto:explore@santafecounty.org)



SANTA FE COUNTY  
**OPEN SPACE & TRAILS**

Connecting the people of our communities to the rural heritage and natural landscapes of Santa Fe County

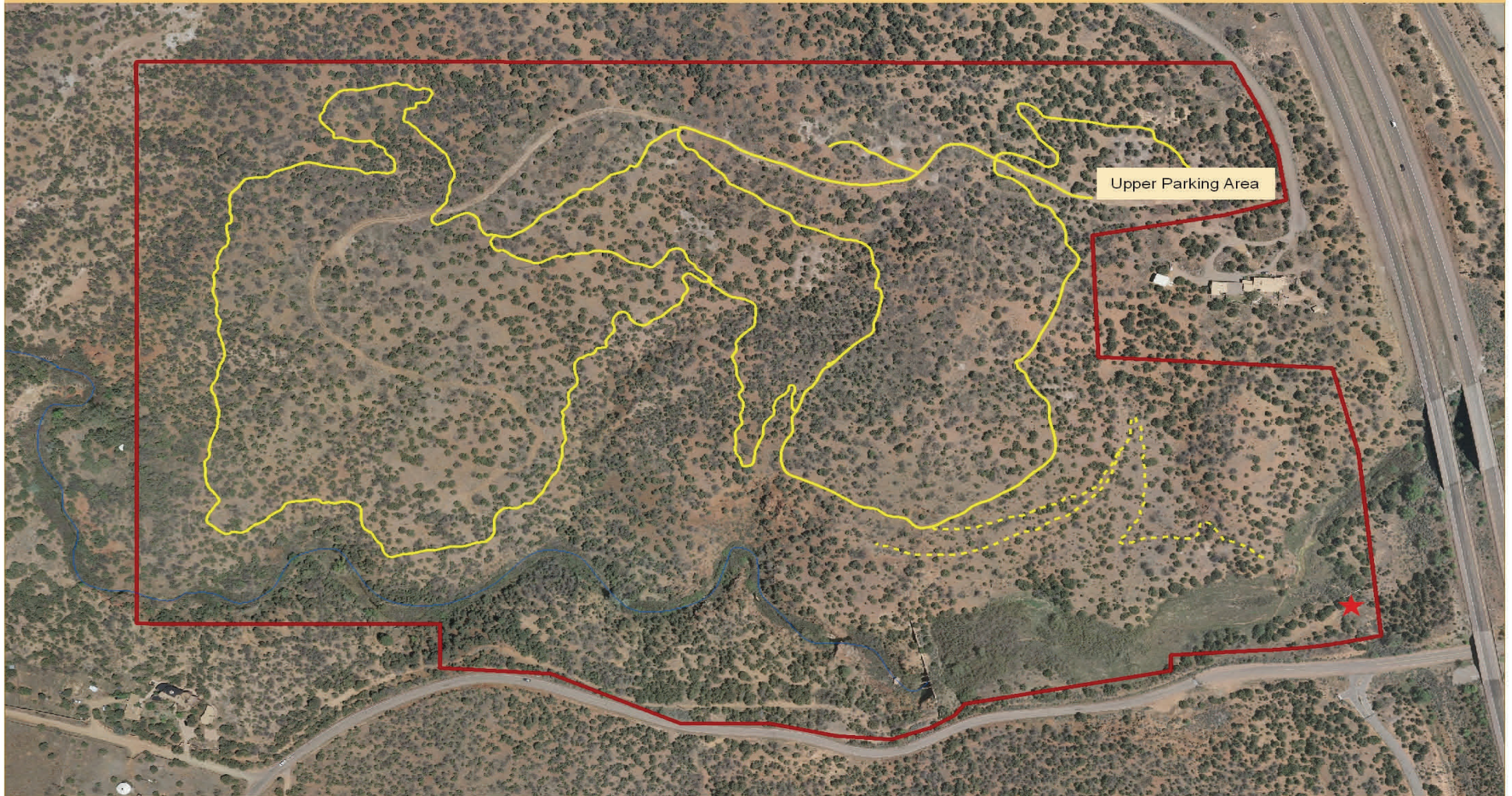
## Arroyo Hondo Open Space

SANTA FE COUNTY  
OPEN SPACE &  
TRAILS PROGRAM



# Arroyo Hondo Open Space Trail Map

## Arroyo Hondo Open Space



Arroyo Hondo Open Space

Future Parking and Trailhead

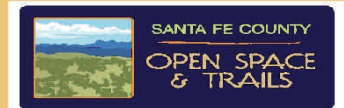


Built Trail



Proposed Trail

0 125 250 500 750 1,000 Feet



Directions available at: [www.santafecounty.org/community\\_services/open\\_space\\_and\\_trails\\_program/arroyo\\_hondo\\_open\\_space](http://www.santafecounty.org/community_services/open_space_and_trails_program/arroyo_hondo_open_space)