

V1.A.2

LOS ALAMOS

County Council

July 9, 2018

Anna Hansen, Chair
Santa Fe County Commission
P.O. Box 276
Santa Fe, NM 87504

Dear Chair Hansen,

COUNTY COUNCIL

David Izraelevitz
Council Chair

Chris Chandler
Council Vice-Chair

COUNCILORS

Antonio Maggiore
Susan O'Leary

Morris Pongratz
Rick Reiss
Pete Sheehy

COUNTY MANAGER

Harry Burgess

Los Alamos County has an interest in discussing the potential alteration of our respective boundaries to allow for the management and potential development of property that Los Alamos County currently owns, but is located within Santa Fe County.

We have had initial conversations with you and several of your commissioners individually, and in order to keep this conversation progressing I am writing to request that this subject be placed on a future Santa Fe County Commission meeting agenda. Doing so would allow for a public discussion of the potential benefits of such a land swap, and I and other representatives of Los Alamos County would appreciate being able to bring this issue before the Commission for consideration.

The attached map illustrates the property that Los Alamos County currently owns within Santa Fe County. It also highlights an area that could be offered as an equitable trade of jurisdiction so that our respective total land areas do not change. One proposal would shift our boundaries to allow for the property currently owned by Los Alamos County to be within our boundaries – enabling us to plan, regulate, and develop this property – while also redrawing the county boundaries to incorporate an equivalent number of acres of U.S. Forest Service property into Santa Fe County's jurisdiction. If acceptable, this shift of jurisdictional boundaries would result in an increase in federal PILT funds for Santa Fe County proportional to the total number of acres involved.

I do not anticipate a decision on this subject during our first presentation to the Commission; however, I am very interested in initiating the conversation as

county boundary changes can only occur on January first of each odd-numbered year. During our conversation I hope to explain this limitation as well as the relatively simple statutory process for such an alteration of County boundaries, specifically a resolution approved by both governing bodies is all that is necessary when there are no residents of the parcels being considered. We would also be happy to answer any questions that the Commission may have regarding our proposal.

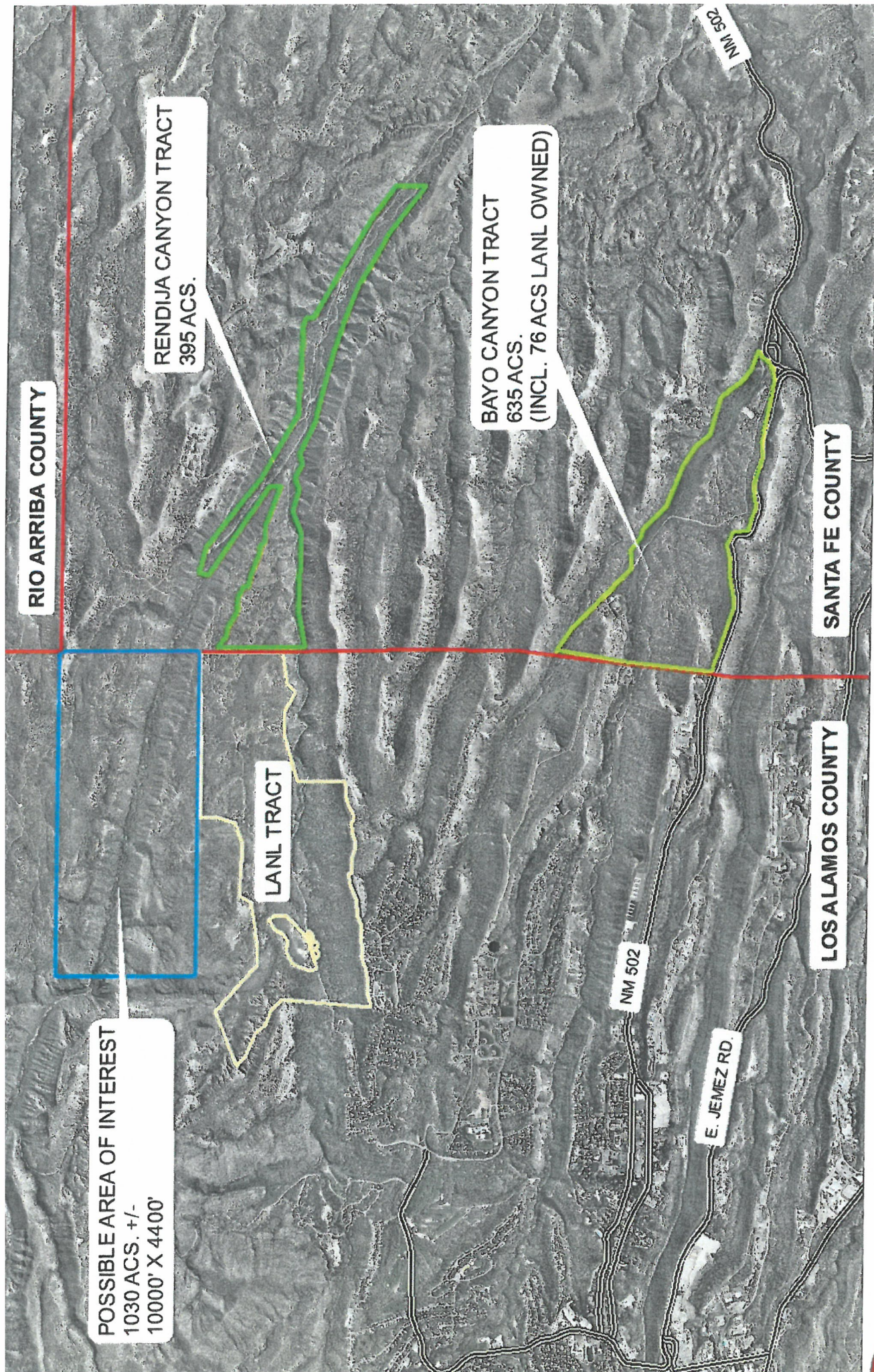
Thank you for your consideration, I look forward to discussing this idea in more depth.

Sincerely,

A handwritten signature in black ink, appearing to read 'David Izraelevitz', with a long, sweeping flourish extending from the end.

David Izraelevitz

Cc: Henry Roybal, District 1
Robert Anaya, District 3
Anna Hamilton, District 4
Ed Moreno, District 5
Katherine Miller, Manager
Chris Chandler, LAC Council Vice-Chair



POSSIBLE AREA OF INTEREST
1030 ACS. +/-
10000' X 4400'

LANL TRACT

RENDIJA CANYON TRACT
395 ACS.

BAYO CANYON TRACT
635 ACS.
(INCL. 76 ACS LANL OWNED)

RIO ARriba COUNTY

LOS ALAMOS COUNTY

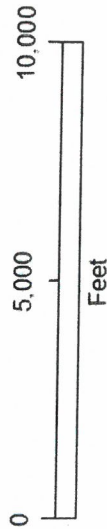
SANTA FE COUNTY

NM 502

E JEMEZ RD.

NM 502

LOS ALAMOS/SANTA FE COUNTY LINE AREAS OF INTEREST



LOS ALAMOS



LOS AL