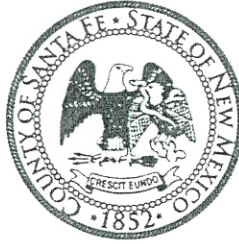


Henry P. Roybal
Commissioner, District 1

Anna Hansen
Commissioner, District 2

Robert A. Anaya
Commissioner, District 3



Anna T. Hamilton
Commissioner, District 4


Ed Moreno
Commissioner, District 5

Katherine Miller
County Manager

MEMORANDUM

DATE: August 9, 2017

TO: Board of County Commissioners

FROM: Don D. Moya, Finance Division Director 

VIA: Katherine Miller, County Manager

RE: Resolution No. 2017-_____, A Resolution Adopting Local Government Road Improvement Fund Project No. SP-5-18(184) For Pavement Rehabilitation/Improvements on County Roads Throughout Santa Fe County, New Mexico (Finance Division / Don D. Moya)

SUMMARY:

Staff is requesting approval of the resolution in support of participation in the 2017/2018 NMDOT Local Government Road Fund (LGRF) Program which provides funds to local entities for pavement rehabilitation and improvements.

BACKGROUND:

Santa Fe County was approved for funding through the Local Government Road Improvement Fund Program (LGRF) SB Funding for the pavement rehabilitation/improvements of Entrada, Calle Sinsonte, Camino Peralta, Entrada Redonda, and Las Estrellas in Santa Fe County, New Mexico. Santa Fe County is required to provide 25% in matching funds in the amount of \$18,041 with the State's share of 75% in the amount of \$54,122 for a total project cost of \$72,163. This resolution will also authorize the County Manager the authority to execute on behalf of the County the Cooperative Agreement with NMDOT for the project and any amendments thereto.

ACTION REQUESTED:

The Finance Division as well as the Public Works Department requests approval of the resolution in support of participation in the 2017/2018 NMDOT LGRF Program.

THE BOARD OF COUNTY COMMISSIONERS OF SANTA FE COUNTY

Resolution No. 2017- _____

A RESOLUTION ADOPTING LOCAL GOVERNMENTS ROAD FUND PROJECT NO. SP-5-18(184) FOR PAVEMENT REHABILITATION/IMPROVEMENTS OF VARIOUS COUNTY ROADS THROUGHOUT SANTA FE COUNTY, NEW MEXICO

WHEREAS, pursuant to NMSA 1978, Section 67-3-28.2 assistance for local road construction and repair is available through the New Mexico Department of Transportation ("NMDOT") from the Local Governments Road Fund ("LGRF"); and

WHEREAS, the County of Santa Fe ("County") applied for Fiscal Year 2018 LGRF funding for pavement rehabilitation/improvements on various County roads; and

WHEREAS, by letter, dated June 8, 2017 (Exhibit A), NMDOT informed the County that Project No. SP-5-18(184) (the "Project") had been approved with Control No. L500264; and

WHEREAS, prior to development of a Cooperative Agreement for the Project, NMDOT requires the Board of County Commissioners ("Board") to adopt a resolution adopting the Project and verifying its priority status with the County; and

WHEREAS, the location and other information concerning the various County roads included within the Project are depicted on the attached maps (Exhibit B) and in the following table:

SP 2018 Project List						
Santa Fe County Road Name	Santa Fe County Road Number	B.O.P	E.O.P.	NMDOT Share (75%)	SF County Share (25%)	Cost
Entrada	68	599 Frontage Road	Calle Sinsonte	\$4,142.00	\$1,380.00	\$5,522.00
Calle Sinsonte		Entrada	Espejo	\$4,394.00	\$1,465.00	\$5,859.00
Camino Peralta		Entrada	Calle Varada	\$6,005.00	\$2,002.00	\$8,007.00
Estrada Redonda		East Calabasa	Estrada Calabasa Loop	\$16,173.00	\$5,391.00	\$21,564.00

Las Estrellas	52	East Frontage Road	Dead end	\$23,408.00	\$7,803.00	\$31,211.00
			Total	\$54,122.00	\$18,041.00	\$72,163.00

WHEREAS, the County shall pay all costs, if any, which exceed the total amount of \$72,163.00.

NOW, THEREFORE, BE IT RESOLVED, that the Board (i) hereby adopts the Project as described in this Resolution; (ii) confirms the Project's priority status; (iii) agrees to provide the County Share of Project costs as set forth above; and (iv) delegates to the County Manager the authority to execute on behalf of the County the Cooperative Agreement with NMDOT for the Project and any amendments thereto.

PASSED, APPROVED, AND ADOPTED this 29th day of August 2017.

**BOARD OF COUNTY COMMISSIONERS
OF THE COUNTY OF SANTA FE**

Henry P. Roybal, Chairperson

ATTEST:

Geraldine Salazar, County Clerk

APPROVED AS TO FORM:



Gregory S. Shaffer, County Attorney

FINANCE APPROVAL:

Don D. Moya, Finance Division Director



New Mexico DEPARTMENT OF
TRANSPORTATION

6/8/2017

Santa Fe County
PO Box 276
Santa Fe, New Mexico 87504-0276
ATTN: Robert Martinez

Re: FUNDING 2017/2018 LGRF PROGRAM

Dear Mr. Martinez,

At this point, I would like to inform you that the New Mexico Department of Transportation Commission has approved your project for 17/18. The funding amount is as follows:

<u>Project No.</u>	<u>Control No.</u>	<u>Entity Share (25%)</u>	<u>State Share (75%)</u>	<u>Project Total</u>
SP-5-18(184)	L500264	\$18,041.00	\$54,122.00	\$72,163.00

The following will be the scope of work:

PAVEMENT REHABILITATION/IMPROVEMENTS OF VARIOUS COUNTY ROADS

If the above funding amount requires that your project be adjusted from what was originally proposed (i.e. **Changing lengths or adding or deleting roads with NO change in scope for "type of work to be done"**), please submit the new adjusted project with the roads that are to be done and/or their new lengths. In this submittal you will need to submit a new Estimated Cost Summary detailing the above and all their corresponding costs, map of the new location and the new total for the Project.

Please submit the **resolution** for your project including the project number, control number, project scope, project limits, project location and the project amounts as indicated above. Upon receipt of your resolution I will generate four agreements for signatures.

If changing the scope - **as to type of work to be done** - is absolutely necessary, then you will need to submit to the District Engineer a request for this scope change in writing explaining the reason for the change and a new resolution indicating the new scope of work. This will require approval at the next State Transportation Commission meeting.

To ensure funding of this project the agreements must be fully executed by **October 31, 2017**. Therefore we will need the above as soon as possible.

I hope you find this information helpful. If you have any questions, please contact me at (505) 995-7787. Please submit the applicable information as soon as possible so that I can send four copies of the agreement for signatures.

Sincerely,

Susan Godina
Local Government Road Fund Coordinator
NM DOT
District 5

Susana Martinez
Governor

Tom Church
Cabinet Secretary

Commissioners

Ronald Schmeits
Chairman
District 4

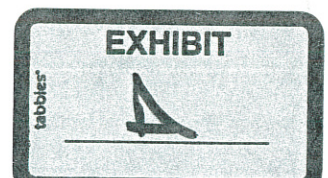
Dr. Kenneth White
Secretary
District 1

David Sepich
Commissioner
District 2

Keith Mortensen
Commissioner
District 3

Butch Mathews
Commissioner
District 5

Jackson Gibson
Commissioner
District 6



SANTA FE COUNTY
2017 LGFSP PROJECT MAP
ENTRADA CR-68
PROJECT DESCRIPTION
SINGLE PENETRATION CHIP SEAL
PROJECT LENGTH 0.45 MILE

BOP NM 599 FRONTAGE RD
EOP CALLE SIN SONTÉ

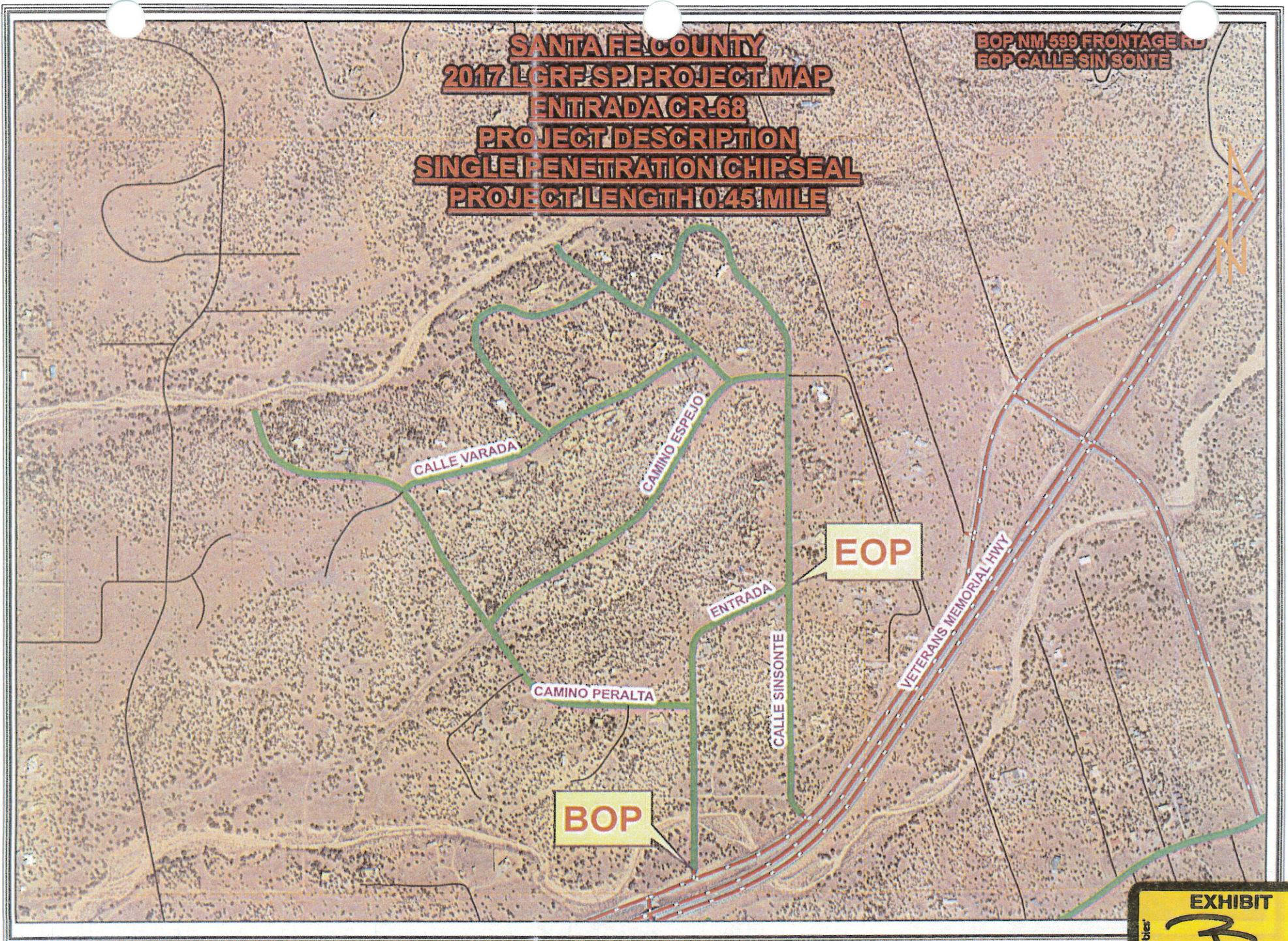


EXHIBIT
B

SANTA FE COUNTY
2017 LGRF SP PROJECT MAP
CALLE SIN SONTÉ
PROJECT DESCRIPTION
SINGLE PENETRATION CHIPSEAL
PROJECT LENGTH 0.29 MILE

BOP ENTRADA
EOP CAMINO ESPEJO

EOP

BOP

CALLE VARADA

CAMINO ESPEJO

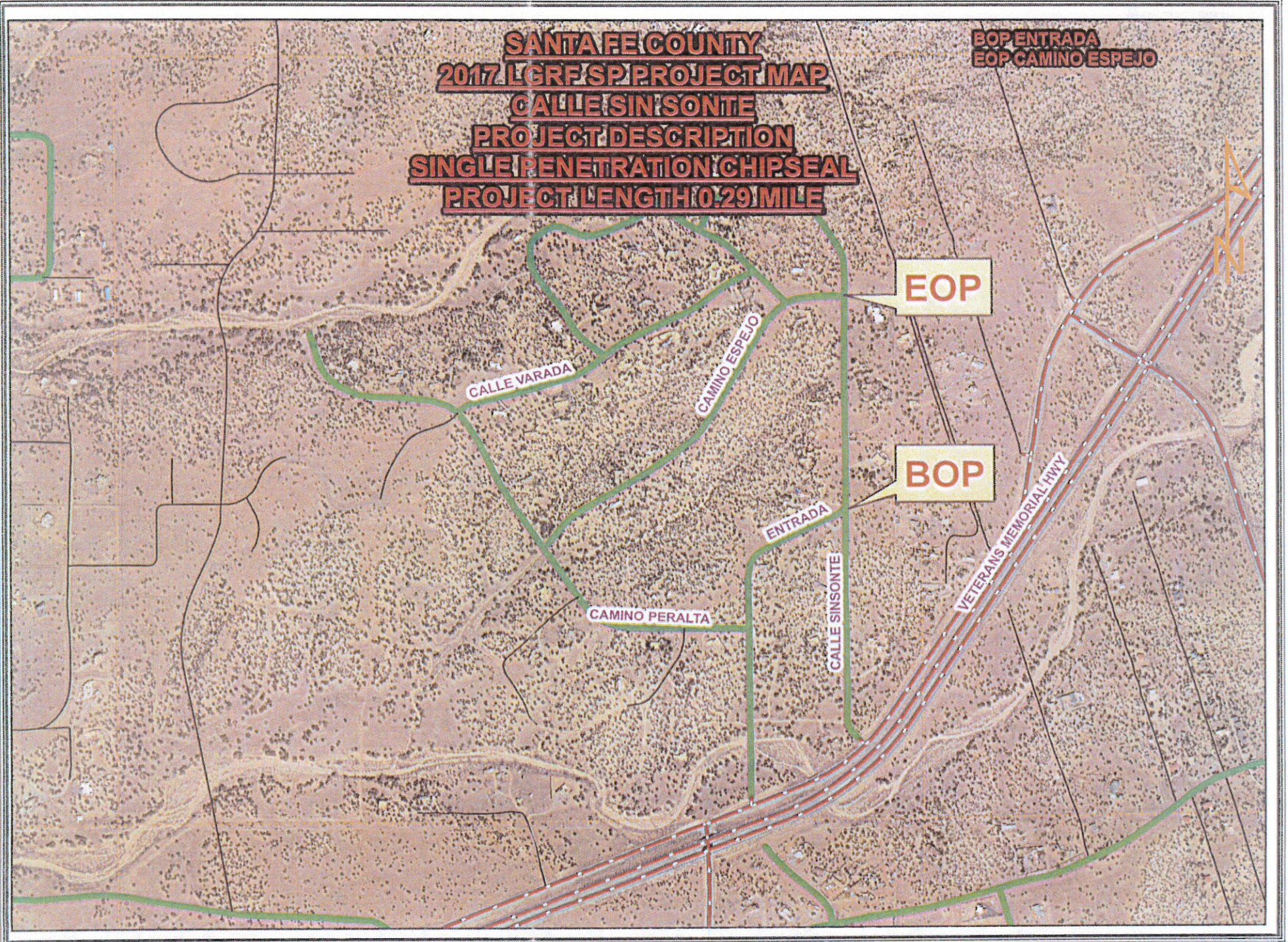
ENTRADA

CAMINO PERALTA

CALLE SIN SONTÉ

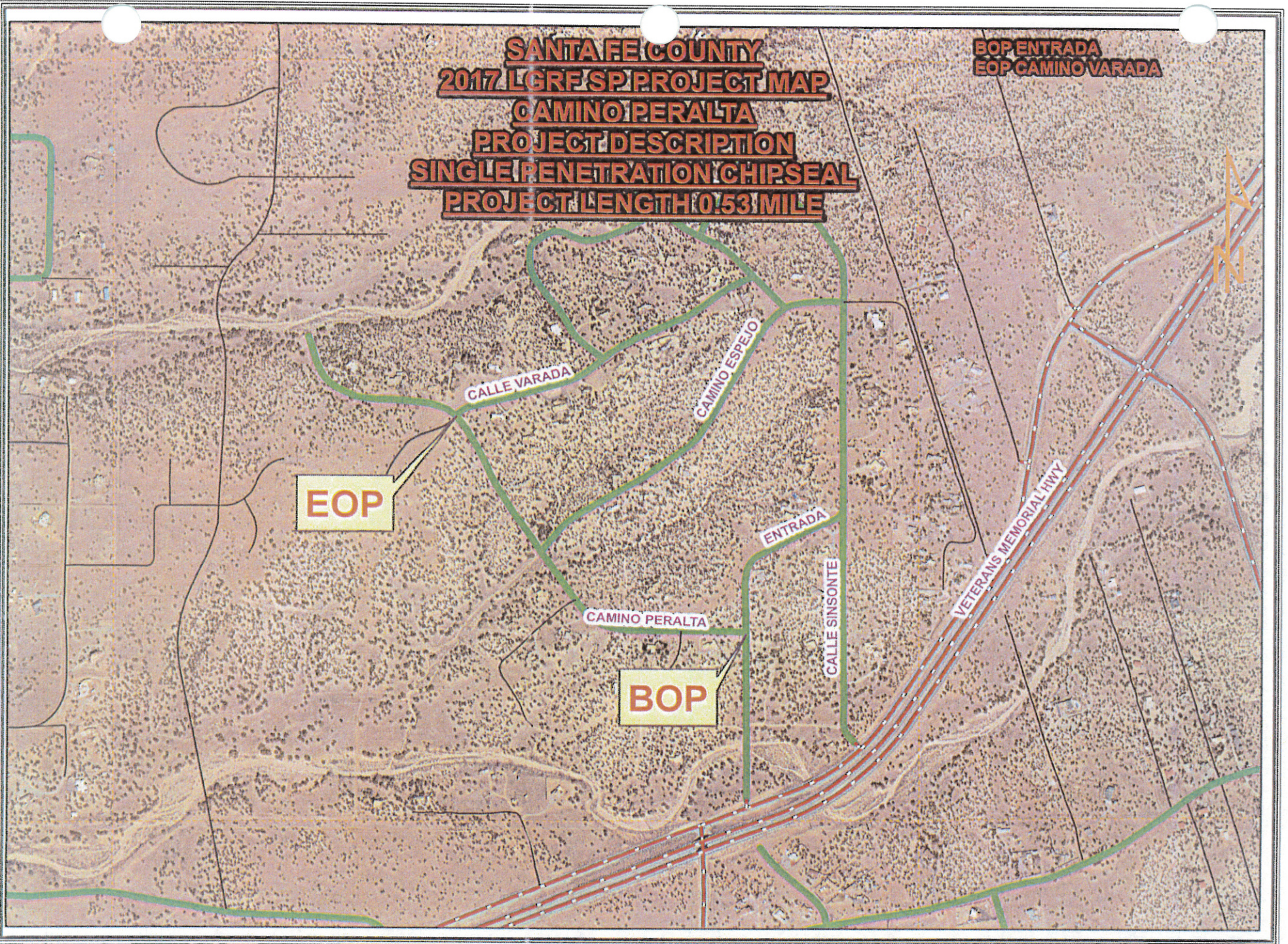
VETERANS MEMORIAL HWY

N
A



SANTA FE COUNTY
2017 LGRF SP PROJECT MAP
CAMINO PERALTA
PROJECT DESCRIPTION
SINGLE PENETRATION CHIPSEAL
PROJECT LENGTH 0.53 MILE

BOP ENTRADA
EOP CAMINO VARADA



SANTA FE COUNTY
2017 LGRE SP PROJECT MAP
ESTRADA REDONDA
PROJECT DESCRIPTION
SINGLE PENETRATION CHIPSEAL
PROJECT LENGTH 1.69 MILE

BOP ESTRADA CALABASA (Loop)
EOP ESTRADA CALABASA (Loop)

ESTRADA REDONDA

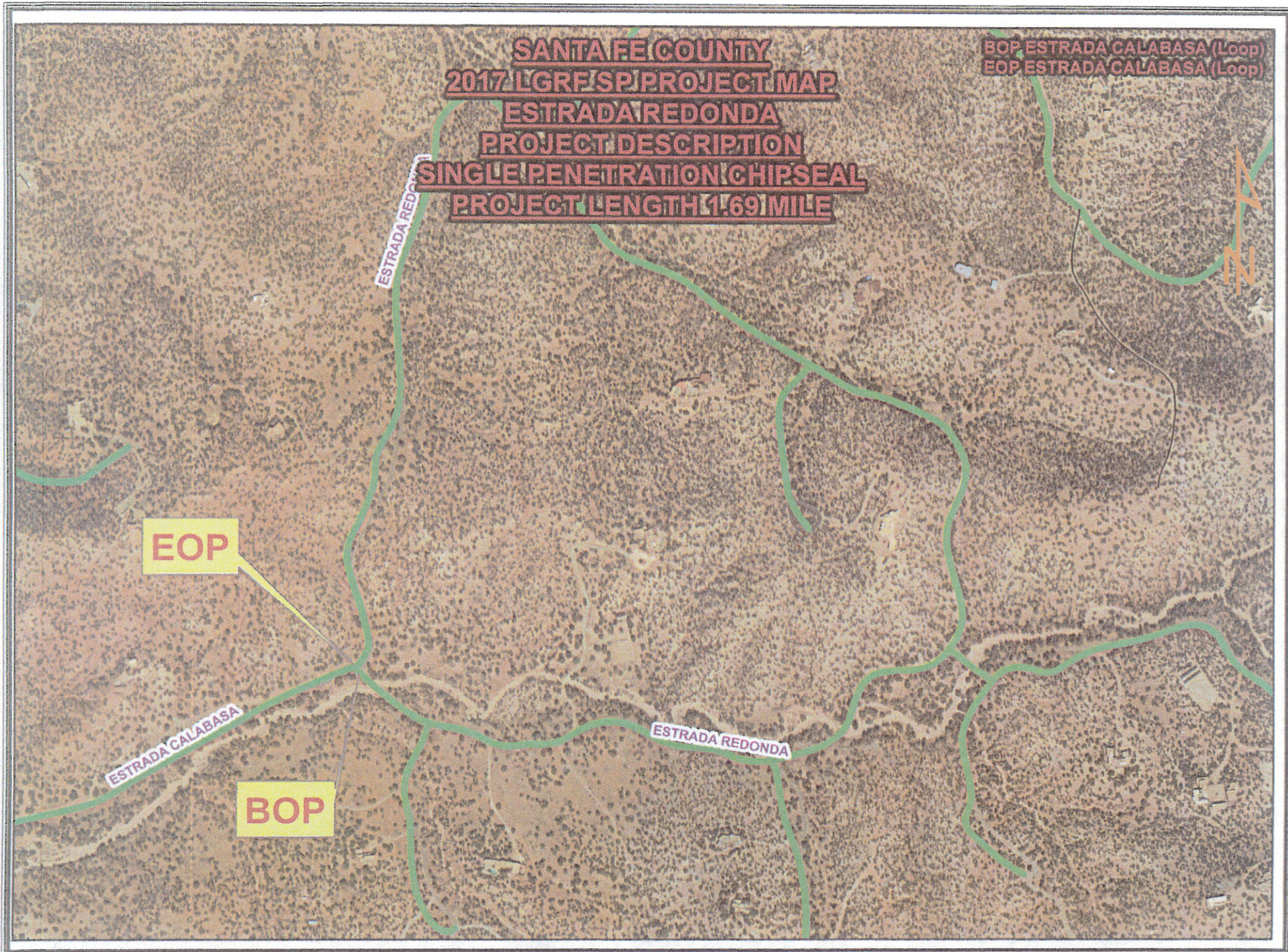
EOP

ESTRADA CALABASA

BOP

ESTRADA REDONDA

N



SANTA FE COUNTY
2017 LGF SP PROJECT MAP
LAS ESTRELLAS CR-52
PROJECT DESCRIPTION
SINGLE PENETRATION CHIPSEAL
PROJECT LENGTH 1.83 MILE

BOP I-25 WEST FRONTAGE RD
EOP DEAD END

