

**SANTA FE COUNTY
BOARD OF COUNTY COMMISSIONERS**

RESOLUTION NO. 2025 - 109

**A RESOLUTION ADOPTING LOCAL GOVERNMENTS ROAD IMPROVEMENT
FUND PROJECT NO. L500615 FOR PAVEMENT
REHABILITATION/IMPROVEMENTS OF SANTA CRUZ LAKE ROAD AND
ENCANTADO LOOP**

WHEREAS, pursuant to NMSA 1978, Section 67-3-28.2 (Local governments road fund created; uses), assistance for local road construction and repair is available through the New Mexico Department of Transportation (NMDOT) from the Local Governments Road Improvements Fund (LGRF); and

WHEREAS, the County of Santa Fe (County) applied for fiscal year 2026 LGRF funding for pavement rehabilitation/improvements on various roads within the County; and

WHEREAS, by email dated June 12, 2025 (see Exhibit A), NMDOT informed the County that Project No. L500615 (the Project) is approved; and

WHEREAS, prior to development of a Cooperative Agreement for the Project, NMDOT requires the Santa Fe Board of County Commissioners (Board) to adopt a resolution adopting the Project and verifying its priority status; and

WHEREAS, the Santa Fe County Public Works Department revised the initial list of preservation projects to meet the funding amount awarded by NMDOT; and

WHEREAS, the location and other information concerning the Project is depicted on the attached map (see Exhibit B) and in the following table:

2025 Pavement Preservation Projects

Project	Department Share 75%	SFC Share 25%	Total Project Cost
Pavement rehabilitations and improvements, single layer chip seal, mil and inlay	\$81,891	\$27,297	\$109,188

SFC CLERK RECORDED 10/03/2025

Road Name	SFC Road	Beginning of Project	End of Project
Santa Cruz Lake Road	98A	Camino La Sotea	Lake Parking Lot
Encantado Loop		Avenida Azul	Avenida Azul

NOW, THEREFORE, BE IT RESOLVED by the Santa Fe County Board of County Commissioners hereby:

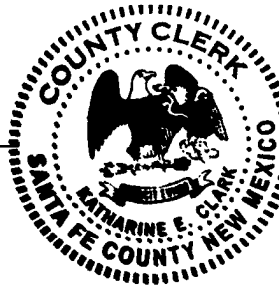
1. Adopt the as described in this Resolution.
2. Confirms the Project's priority status.
3. Agrees to provide the County share of the Project costs as set forth above.
4. Delegates to the County Manager the authority to execute the Cooperative Agreement with NMDOT for the Project and any amendments thereto.

PASSED, APPROVED, AND ADOPTED ON THIS 30th DAY OF SEPTEMBER, 2025.

**SANTA FE COUNTY
BOARD OF COUNTY COMMISSIONERS**

By: _____

Camilla Bustamante, Chair



ATTEST:

Katharine E. Clark
Santa Fe County Clerk

Date: _____

10/2/2025

Approved as to form:

Peter Valencia for

Walker Boyd
Santa Fe County Attorney

COUNTY OF SANTA FE)
STATE OF NEW MEXICO) ss

BCC RESOLUTIONS
PAGES: 2

I Hereby Certify That This Instrument Was Filed for
Record On The 3RD Day Of October, 2025 at 11:46:42 AM
and Was Duly Recorded as Instrument # 2068542
Of The Records Of Santa Fe County

Witness My Hand And Seal Of Office

Deputy _____

Katharine E. Clark

Katharine E. Clark
County Clerk, Santa Fe, NM

SFC CLERK RECORDED 10/03/2025

Exhibit A

From: Nino, Amanda, DOT <Amanda.Nino@dot.nm.gov>
Sent: Thursday, June 12, 2025 1:57 PM
To: Sam L. Montoya <slmontoya@santafecountynm.gov>; Seferino Houston <shouston@santafecountynm.gov>; Anthony Serna Sanchez <asernasanchez@santafecountynm.gov>
Cc: Macias, Crystal, DOT <crystal.macias@dot.nm.gov>
Subject: FY26 Awarded Coop Agreements

Good afternoon!

The following agreements have been awarded for fiscal year 2026!
Please be sure to return them signed along with a resolution, once received back to the district they will be submitted for execution.
As a reminder please do not start work until you received back the executed agreement from District 5.

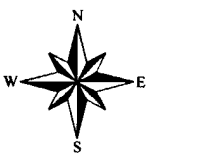
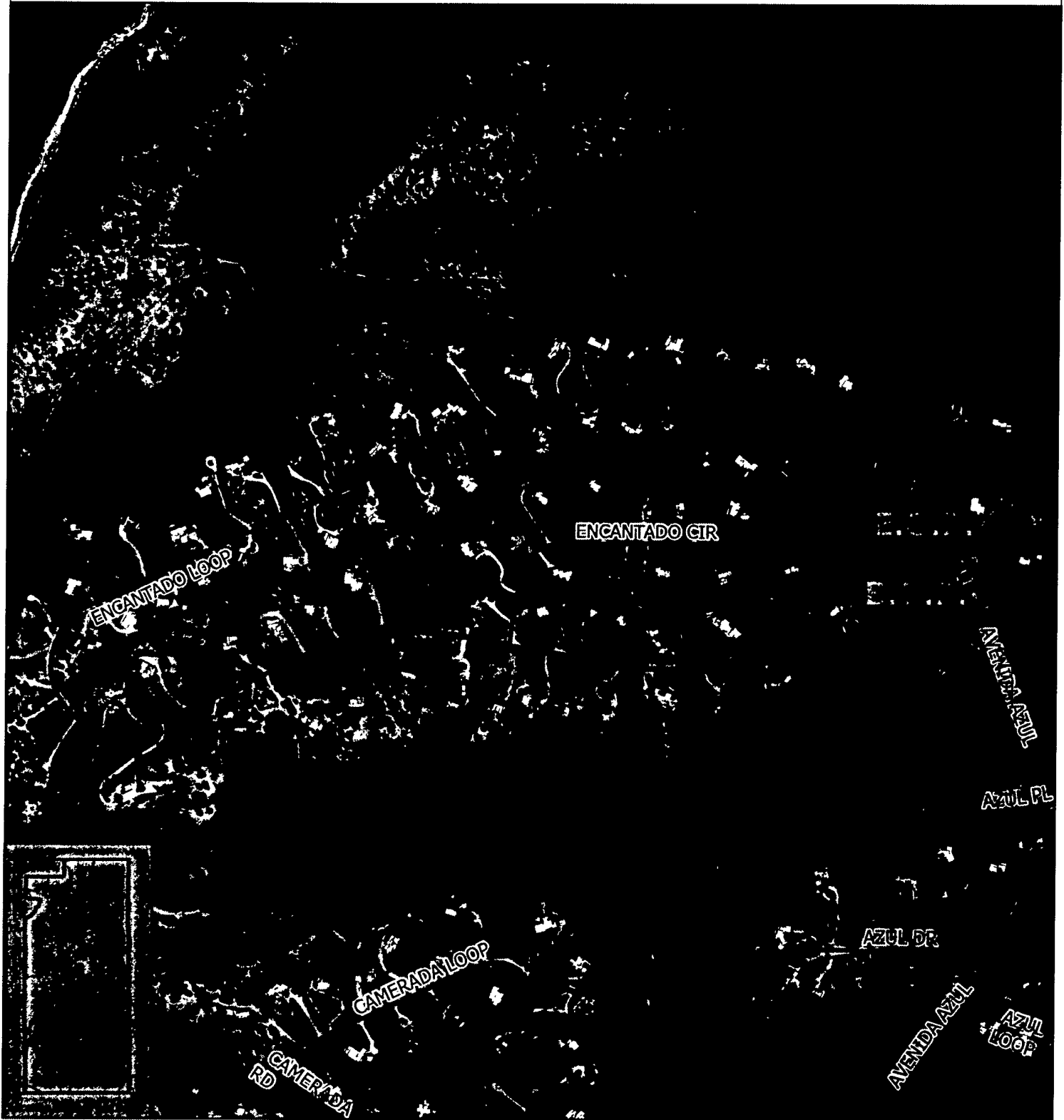
Please feel free to contact me with any questions.

Thank you,
Reminder all agreements should be fully executed by October 2025.

Amanda Niño
District Five LGRF Coordinator
Email: Amanda.Nino@dot.nm.gov
Phone: 505-477-1765

SEC. CLERK RECORDED 10/03/2025

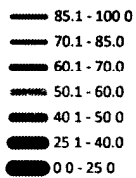
Santa Fe County Project Map
ENCANTADO LOOP
1.74 miles, Chip Seal



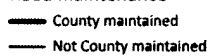
0 150 300 600
US Feet

1 inch represents 600 feet

Pavement Condition Index (PCI)

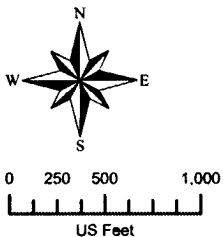
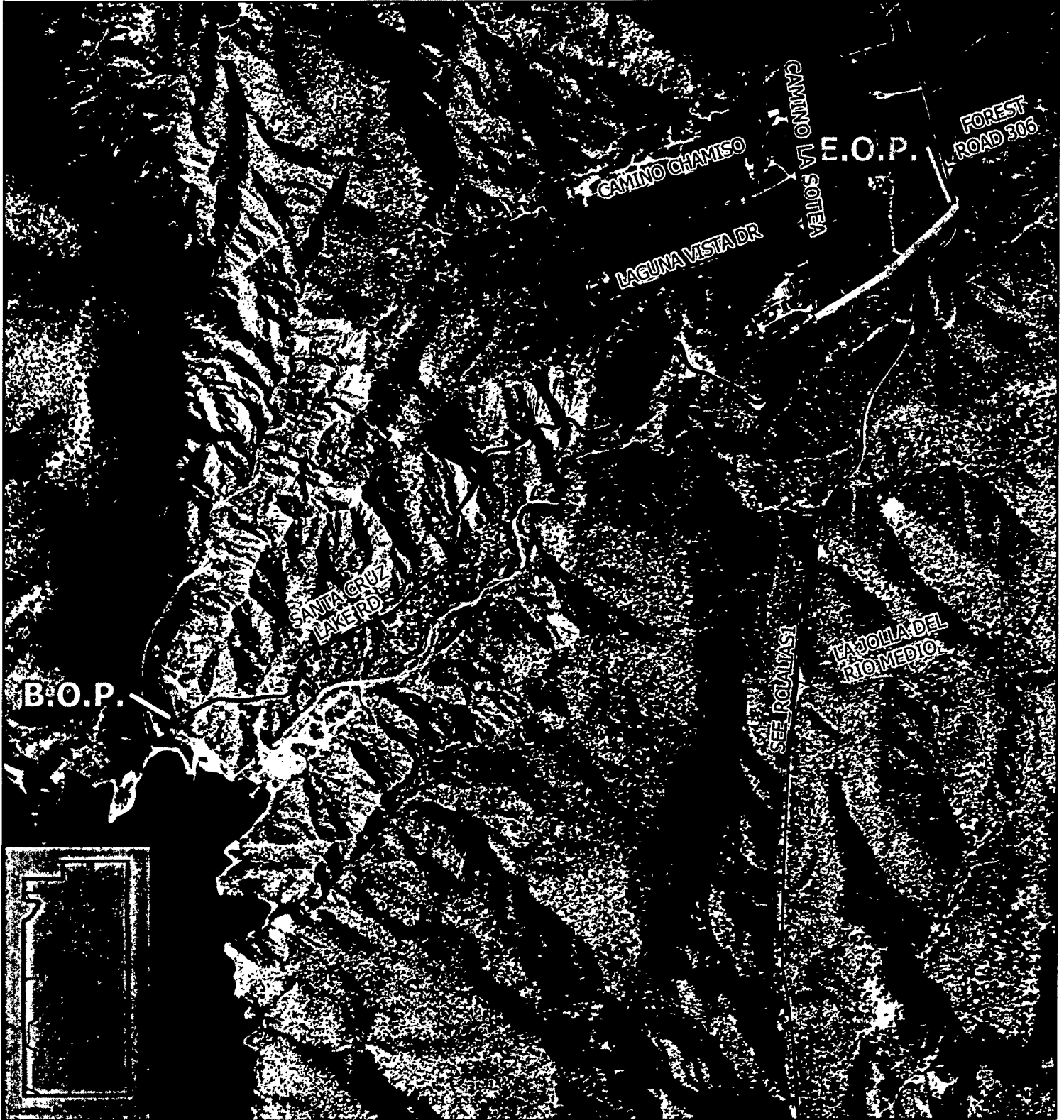


Road maintenance

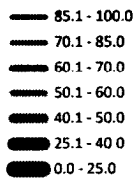


SANTA FE COUNTY

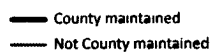
Santa Fe County Project Map
 SANTA CRUZ LAKE RD
 1.54 miles, Chip Seal



Pavement Condition Index (PCI)



Road maintenance



SANTA FE COUNTY

