



SANTA FE COUNTY PUBLIC WORKS DEPT.
424 NM 599 FRONTAGE ROAD
SANTA FE, NEW MEXICO

SEPTEMBER 2023

construction plans for the

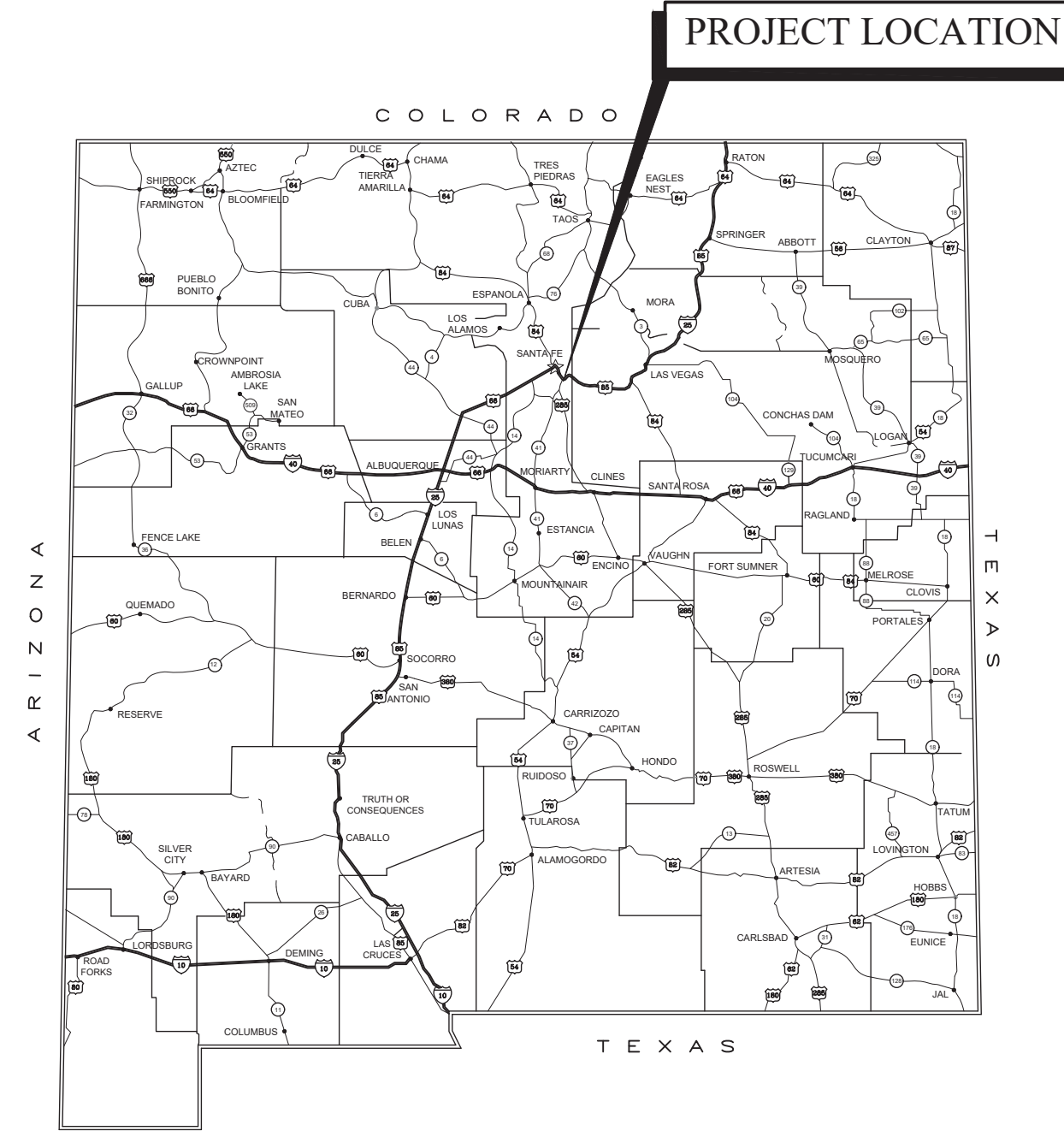
HONDO 2 FIRE SUPPRESSION LINE

645 OLD LAS VEGAS HWY.
SANTA FE, NM 87505

COUNTY P.O. NO. 233349
CONTRACT NO. 23232PWD

INDEX OF DRAWINGS

SEQUENCE	SHEET	DESCRIPTION
GENERAL		
1	G-001	COVER SHEET
2	G-002	ABBREVIATIONS LIST, LEGEND, GENERAL NOTES, AND LOCATION MAP
WATER		
3	W-101	SITE PLAN AND SURVEY CONTROL POINT TABLE
4	W-201	STA. 10+00 TO 12+08 FIRE LINE PLAN AND PROFILE
5	W-202	STA. 12+08 TO 13+21 FIRE LINE PLAN AND PROFILE
6	W-203	STA. 10+00 TO 11+59 STORM DRAIN PLAN AND PROFILE
7	W-501	DETAILS 1
8	W-502	DETAILS 2



VICINITY MAP

THESE DRAWINGS DO NOT INCLUDE NECESSARY COMPONENTS FOR THE CONSTRUCTION SAFETY WHICH SHALL REMAIN THE RESPONSIBILITY OF THE CONTRACTOR.

ALL IDEAS, DESIGNS, ARRANGEMENTS, AND PLANS INDICATED OR REPRESENTED BY THIS INSTRUMENT ARE OWNED BY AND THE PROPERTY OF MOLZEN-CORBIN & ASSOCIATES, AND WERE CREATED AND DEVELOPED FOR USE ON AND IN CONNECTION WITH THE SPECIFIED PROJECT. THESE IDEAS, DESIGNS, ARRANGEMENTS OR PLANS SHALL NOT BE USED BY ANY PERSON, FIRM, OR CORPORATION FOR ANY PURPOSE WHATSOEVER WITHOUT THE WRITTEN CONSENT OF MOLZEN-CORBIN & ASSOCIATES.

THESE DRAWINGS REFLECT INFORMATION ON UTILITIES GATHERED BY SITE INSPECTION, DISCUSSIONS WITH MUNICIPAL OFFICIALS, AND PREVIOUS CONSTRUCTION DOCUMENTS. IT IS POSSIBLE THAT THE EXACT LOCATION OF LINES AND UTILITY CONNECTION POINTS IN THE VICINITY OF REQUIRED WORK MAY BE DIFFERENT FROM THE LOCATION SHOWN ON THESE DRAWINGS. PRIOR TO CONSTRUCTION THE CONTRACTOR SHALL EXCAVATE AND VERIFY THE HORIZONTAL AND VERTICAL LOCATIONS OF ALL OBSTRUCTIONS. SHOULD A CONFLICT EXIST THE CONTRACTOR SHALL NOTIFY THE ENGINEER SO THE CONFLICT CAN BE RESOLVED WITH A MINIMUM AMOUNT OF DELAY.

DESCRIPTION	REV DATE	REV NO
		△
NUMERIC SCALE CONFIRMATION		
DRAWINGS ARE DEPICTED AT INTENDED NUMERIC SCALES IF THIS BAR EQUALS ONE INCH		

SANTA FE COUNTY APPROVALS

Santa Fe County Manager _____ Date: _____
Gregory S. Shaffer

Santa Fe County Attorney _____ Date: _____
Jeff Young

Santa Fe County Fire Marshall _____ Date: _____
Jaome Blay

Santa Fe County Utilities Director _____ Date: _____
Paul Choman

CERTIFICATION:

I, STEVEN K. MORROW, REGISTERED PROFESSIONAL ENGINEER NO. 13679 HEREBY CERTIFY THAT THE FOLLOWING PLANS AND DESIGNS WERE MADE UNDER MY SUPERVISION AND DIRECTION AND THAT SAME IS TRUE AND CORRECT TO THE BEST OF MY KNOWLEDGE AND BELIEF.



STEVEN K. MORROW _____ NO. 13679

MOLZENCORBIN
ENGINEERS | ARCHITECTS | PLANNERS

2701 Miles Road SE, Albuquerque, New Mexico 87106 505.242.5700 office Molzencorbin.com



Molzen Corbin Project Number: CES232-11

G-001

Sheet 1 / 8

GENERAL NOTES

1. THE CONTRACTOR SHALL PROVIDE INGRESS AND EGRESS TO ALL LOCAL BUSINESSES AND RESIDENCES FOR THE DURATION OF THIS PROJECT. THE CONTRACTOR SHALL ADVISE AND SCHEDULE ALL ACCESS CLOSURES, AT LEAST TWENTY-FOUR (24) HOURS IN ADVANCE, WITH THE AFFECTED PROPERTY OWNERS AND WITH THE ENGINEER.
2. UTILITY COORDINATION

PRIOR TO CONSTRUCTION, THE CONTRACTOR SHALL EXCAVATE AND VERIFY THE HORIZONTAL AND VERTICAL LOCATIONS OF ALL OBSTRUCTIONS.

IF ANY UTILITY LINES, PIPELINES, OR UNDERGROUND UTILITY LINES ARE SHOWN ON THESE DRAWINGS, THEY ARE SHOWN IN AN APPROXIMATE MANNER ONLY, AND SUCH LINES MAY EXIST WHERE NONE ARE SHOWN. IF ANY SUCH EXISTING LINES ARE SHOWN, THE LOCATION IS BASED UPON INFORMATION PROVIDED BY THE OWNER OF SAID UTILITY, AND THE INFORMATION MAY BE INCOMPLETE, OR MAY BE OBSOLETE BY THE TIME CONSTRUCTION COMMENCES. THE ENGINEER HAS UNDERTAKEN NO FIELD VERIFICATION OF THE LOCATION, DEPTH, SIZE, OR TYPE OF EXISTING UTILITY LINES, PIPELINES, OR UNDERGROUND UTILITY LINES. THE CONTRACTOR SHALL VERIFY THE LOCATION OF ANY UTILITY LINE, PIPELINE, OR UNDERGROUND UTILITY LINE IN OR NEAR THE AREA OF THE WORK IN ADVANCE OF AND DURING EXCAVATION WORK. THE CONTRACTOR IS FULLY RESPONSIBLE FOR ANY AND ALL DAMAGE CAUSED BY HIS FAILURE TO LOCATE, IDENTIFY AND PRESERVE ANY AND ALL EXISTING UTILITIES, PIPE-LINES, AND UNDERGROUND UTILITY LINES. IN PLANNING AND CONDUCTING EXCAVATION, THE CONTRACTOR SHALL COMPLY WITH STATE STATUTES, MUNICIPAL AND LOCAL ORDINANCES, RULES AND REGULATIONS, IF ANY, PERTAINING TO THE LOCATION OF THESE LINES AND FACILITIES.

THE CONTRACTOR SHALL BE RESPONSIBLE FOR DETERMINING IN ADVANCE OF CONSTRUCTION OPERATIONS, IF OVERHEAD UTILITY LINES SUPPORT STRUCTURES, POLES, GUYS, ETC. ARE AN OBSTRUCTION TO CONSTRUCTION OPERATIONS. IF ANY OBSTRUCTIONS TO CONSTRUCTION OPERATIONS IS EVIDENT, THE CONTRACTOR SHALL BE RESPONSIBLE FOR COORDINATING WITH THE APPROPRIATE UTILITY OWNER TO REMOVE OR SUPPORT THE UTILITY OBSTRUCTION. ANY COST ASSOCIATED WITH THIS EFFORT SHALL BE THE RESPONSIBILITY OF THE CONTRACTOR AND NO SEPARATE PAYMENT WILL BE MADE.

CONTRACTOR IS TO SUPPORT AND MAINTAIN THE INTEGRITY OF ALL UNDERGROUND TELEPHONE, ELECTRIC CABLES, AND CABLE TELEVISION UTILITIES AT NO ADDITIONAL COST TO THE OWNER. CABLE IS TO BE SUPPORTED EVERY 15' (MINIMUM). CONTRACTOR SHALL COORDINATE WITH AND MAKE NECESSARY PAYMENT (IF ANY) TO UTILITY OWNER FOR DE-ENERGIZATION OF CABLES OR SUPPORT OF CABLES BY THE UTILITY OWNER.
3. THE CONTRACTOR IS HEREBY ADVISED THAT ALL UTILITY RELOCATIONS BY THE UTILITY COMPANIES WILL BE DONE CONCURRENTLY WITH CONSTRUCTION. THE CONTRACTOR SHALL PROVIDE FOR ALL UTILITY WORK IN CONJUNCTION WITH THIS PROJECT'S CONSTRUCTION OPERATIONS AND SHALL COORDINATE THE SCHEDULING OF THIS WORK WITH THE RESPECTIVE UTILITY COMPANIES. THE CONTRACTOR SHALL PROVIDE FOR THESE CONTINGENCIES WHEN BIDDING THIS PROJECT AND NO CLAIM FOR DELAYS DUE TO UTILITY WORK WILL BE ALLOWED.
4. THE CONTRACTOR SHALL PROMPTLY CLEAN UP ANY MATERIAL EXCAVATED WITHIN THE PUBLIC RIGHT-OF-WAY SO THAT THE EXCAVATED MATERIAL IS NOT SUSCEPTIBLE TO BEING WASHED DOWN THE STREET.
5. THESE DRAWINGS DO NOT INCLUDE THE NECESSARY COMPONENTS FOR CONSTRUCTION SAFETY WHICH SHALL REMAIN THE RESPONSIBILITY OF THE CONTRACTOR.

6. THE CONTRACTOR SHALL COORDINATE ANY WATER SHUT-OFF OPERATION WITH THE UTILITY MANAGER NOT LESS THAN THREE (3) WORKING DAYS PRIOR TO INITIATING ANY WORK AFFECTING EXISTING WATER UTILITIES. WATER SERVICE SHUT-OFF SHALL BE LIMITED TO FOUR (4) HOURS.
7. REMOVAL AND REPLACEMENT OF EXISTING CURB AND GUTTER AND MEDIANS WILL BE CONSIDERED INCIDENTAL TO CONSTRUCTION, AND NO SEPARATE PAYMENT WILL BE MADE.
8. THE CONTRACTOR SHALL MAINTAIN AN UP TO DATE SET OF "RECORD DRAWINGS" FOR THIS PROJECT. THESE PLANS SHALL BE KEPT CURRENT, WITHIN TWO (2) WEEKS, AT ALL TIMES AND SHALL BE SUBJECT TO REVIEW BY THE ENGINEER THROUGHOUT THIS PROJECT AND WILL BE REVIEWED BY THE ENGINEER FOR ACCURACY AND COMPLETENESS AT A MINIMUM OF ONCE EVERY THIRTY (30) DAYS. THE FINAL "RECORD DRAWINGS" SHALL BE SUBMITTED TO THE ENGINEER PRIOR TO FINAL PAYMENT.
9. THE CONTRACTOR SHALL PROPERLY HANDLE AND DISPOSE OF ALL ASPHALT PAVEMENT MATERIAL REMOVED ON THIS PROJECT BY EITHER:
 - HAULING TO AN APPROVED LANDFILL IN ACCORDANCE WITH THE REGULATIONS OF THE NEW MEXICO SOLID WASTE ACT; OR
 - IF APPROVED, THE CONTRACTOR SHALL BREAK DOWN THE REMOVED ASPHALT SURFACING TO A TWO (2) INCH MAX. SIZE AND HAUL AND STOCKPILE MATERIAL TO A LOCATION DESIGNATED BY THE OWNER. THIS WORK SHALL BE CONSIDERED INCIDENTAL AND NO SEPARATE PAYMENT SHALL BE MADE.
10. THE CONTRACTOR SHALL BE RESPONSIBLE FOR REPORTING AND CLEANUP OF SPILLS WHICH ARE ASSOCIATED WITH THIS PROJECT'S CONSTRUCTION AND SHALL REPORT AND RESPOND TO SPILLS OF HAZARDOUS MATERIALS SUCH AS GASOLINE, DIESEL, MOTOR OILS, SOLVENTS, CHEMICALS, TOXIC AND CORROSIVE SUBSTANCES, AND ANY OTHER MATERIALS WHICH MAY BE CONSIDERED A THREAT TO THE PUBLIC HEALTH OR THE ENVIRONMENT. THE CONTRACTOR SHALL BE RESPONSIBLE FOR ALL REPORTING OF ANY PAST SPILLS WHICH WERE ENCOUNTERED DURING THIS PROJECT'S CONSTRUCTION AND OF ANY CURRENT SPILLS NOT ASSOCIATED WITH THIS PROJECT'S CONSTRUCTION. THESE REPORTS SHALL BE MADE IMMEDIATELY TO THE NEW MEXICO ENVIRONMENTAL DEPARTMENT'S EMERGENCY RESPONSE TEAM.
11. THE CONTRACTOR SHALL TAKE ALL NECESSARY PRECAUTIONS TO PROTECT ALL HORIZONTAL AND VERTICAL CONTROL SURVEY MONUMENTS FROM DAMAGE. IF DURING CONSTRUCTION, THE CONTRACTOR DISTURBS OR DESTROYS A MARK, THE CONTRACTOR SHALL ESTABLISH A NEW MARK IN COMPLIANCE WITH THE STANDARDS AND PROCEDURES SET FORTH IN THE "GEODETIC MARK PRESERVATION GUIDEBOOK", NATIONAL GEODETIC SURVEY, MARCH, 1990. CONTACT: NGS MARK PRESERVATION CENTER NOAA.
12. THE CONTRACTOR SHALL HAVE PERSONNEL CERTIFIED IN TRAFFIC CONTROL AT ALL TIMES DURING CONSTRUCTION AND ON-CALL DURING NON WORKING HOURS TO MAINTAIN PROJECT TRAFFIC CONTROL.
13. CONTRACTOR IS RESPONSIBLE FOR DISPOSING OF ALL TRASH AND CONSTRUCTION DEBRIS GENERATED BY THIS PROJECT.

ABBREVIATIONS

BPS	BOOSTER PUMP STATION
CO	CLEANOUT
CONC	CONCRETE
DIP	DUCTILE IRON PIPE
GV	GATE VALVE
MJ	MECHANICAL JOINT
PVC	POLYVINYL CHLORIDE
PIV	POST INDICATOR VALVE
RED	REDUCER
RPFBP	REDUCED PRESSURE BACKFLOW PREVENTER
SD	STORM DRAIN
SDR	STANDARD DIAMETER RATION
WL	WATER LINE

LEGEND

--UG-- OR --E--	UNDERGROUND ELECTRIC
--C--	COMMUNICATION
--FO--	FIBER OPTIC
⊙ OR ⊙	EXISTING BOLLARD
⊙	NEW BOLLARD
⊙	EXISTING VENT
⊙	CLEANOUT
⊙	EXISTING HYDRANT
⊙	EXISTING VALVE
⊙	NEW VALVE
⊙	EXISTING LIGHT POLE
⊙	EXISTING MANHOLE

MOLZENCORBIN

2701 Miles Road SE
 Albuquerque, New Mexico 87106
 505 242 5700
 MolzenCorbin.com

NOTICE OF EXTENDED PAYMENT PROVISION: THIS CONTRACT ALLOWS THE OWNER TO MAKE PAYMENT WITHIN 45 DAYS AFTER SUBMISSION OF AN UNDISPUTED REQUEST FOR PAYMENT



REVISION

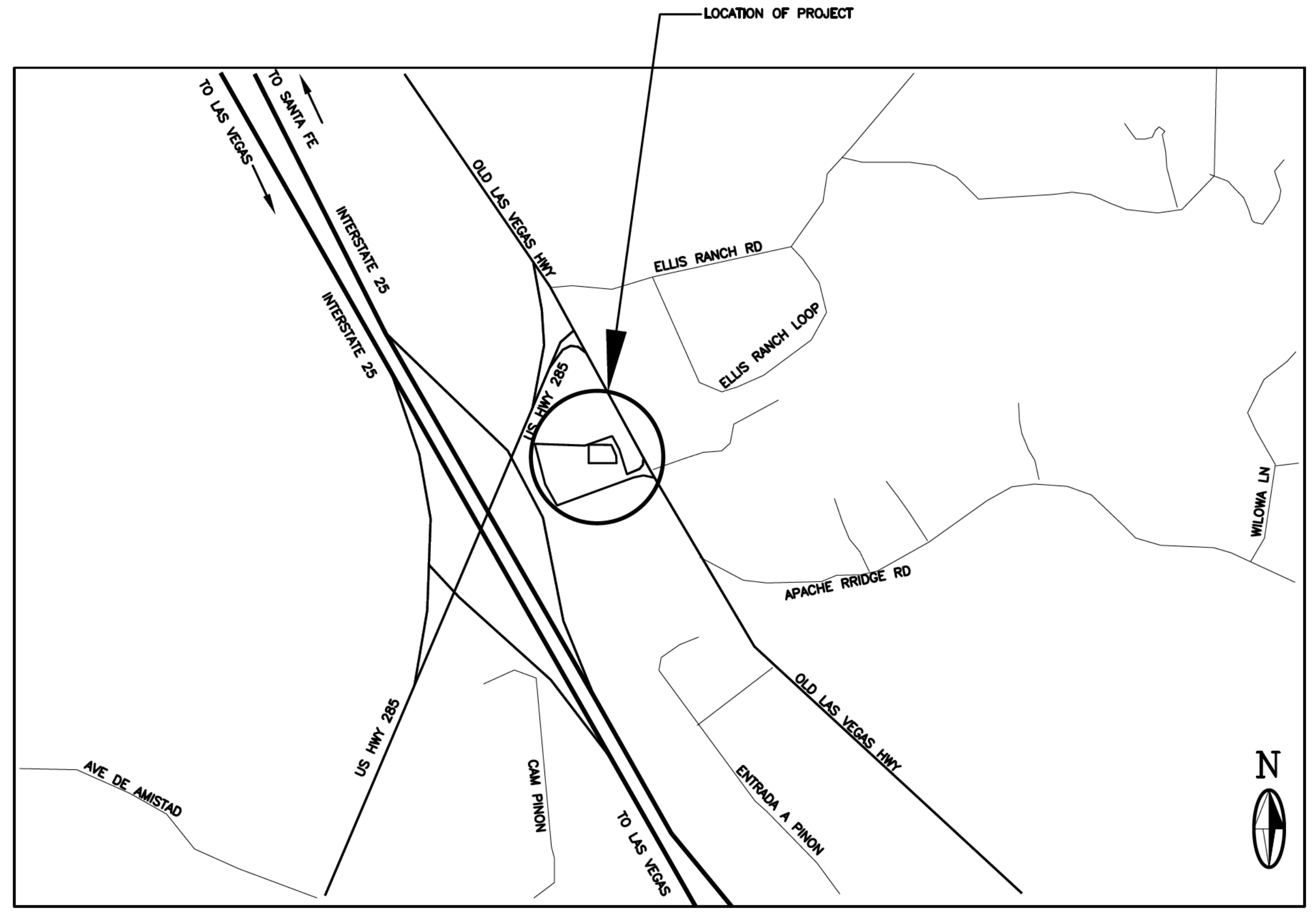
SYMBOL	DATE:	DESCRIPTION:	BY:

SANTA FE COUNTY
 UTILITIES DIVISION 424 NM 599, SANTA FE, NM 87507

PROJECT NAME:
 HONDO 2
 FIRE SUPPRESSION LINE

PROJECT INFORMATION

APPROVED BY: SM	REVIEWED BY: KM
DATE: AUGUST, 2023	SHEET: G-002
DRAWN BY: DJ	



LOCATION MAP
 SCALE: NONE

LAST MODIFIED: Sep 26, 2023 - 9:16am
 DWG NAME: 2023-11-13 County Arroyo Hondo 2 Bulk Water Station\DWG\Fire Suppression Line.dwg
 USER: DJM
 CUI: 1002-1849

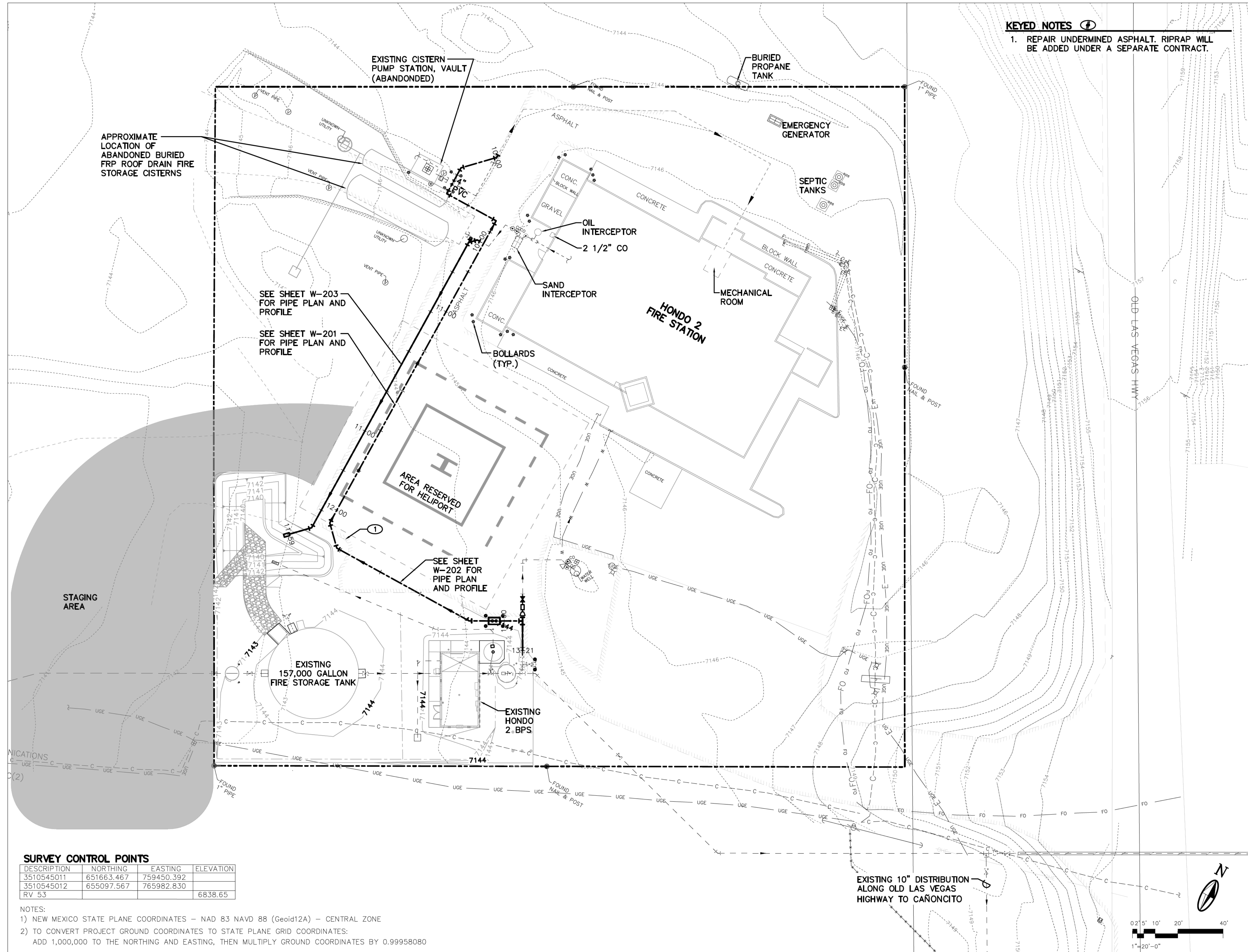
MOLZENCORBIN

2701 Miles Road SE
Albuquerque, New Mexico 87106
505 242 5700
MoizenCorbin.com

NOTICE OF EXTENDED PAYMENT PROVISION: THIS CONTRACT ALLOWS THE OWNER TO MAKE PAYMENT WITHIN 45 DAYS AFTER SUBMISSION OF AN UNDISPUTED REQUEST FOR PAYMENT

KEYED NOTES

- REPAIR UNDERMINED ASPHALT. RIPRAP WILL BE ADDED UNDER A SEPARATE CONTRACT.



EXISTING CISTERN PUMP STATION, VAULT (ABANDONED)

APPROXIMATE LOCATION OF ABANDONED BURIED FRP ROOF DRAIN FIRE STORAGE CISTERNS

SEE SHEET W-203 FOR PIPE PLAN AND PROFILE

SEE SHEET W-201 FOR PIPE PLAN AND PROFILE

SEE SHEET W-202 FOR PIPE PLAN AND PROFILE

EXISTING 157,000 GALLON FIRE STORAGE TANK

EXISTING HONDO 2 BPS

EXISTING 10" DISTRIBUTION ALONG OLD LAS VEGAS HIGHWAY TO CAÑONCITO

SURVEY CONTROL POINTS

DESCRIPTION	NORTHING	EASTING	ELEVATION
3510545011	651663.467	759450.392	
3510545012	655097.567	765982.830	
RV 53			6838.65

NOTES:
1) NEW MEXICO STATE PLANE COORDINATES - NAD 83 NAVD 88 (Geoid12A) - CENTRAL ZONE
2) TO CONVERT PROJECT GROUND COORDINATES TO STATE PLANE GRID COORDINATES: ADD 1,000,000 TO THE NORTHING AND EASTING, THEN MULTIPLY GROUND COORDINATES BY 0.99958080



REVISION

SYMBOL	DATE:	DESCRIPTION:	BY:

SANTA FE COUNTY
UTILITIES DIVISION 424 NM 599, SANTA FE, NM 87507

PROJECT NAME:
HONDO 2
FIRE SUPPRESSION LINE

SITE PLAN AND CONTROL POINT INFORMATION

APPROVED BY: SM REVIEWED BY: KM
DATE: AUGUST, 2023 SHEET: W-101
DRAWN BY: DJ

LAST MODIFIED: Sep 26, 2023 - 9:15am
FILE NAME: W-101.dwg
PROJECT: Arroyo Hondo 2 Bulk Water Station/WDMS Fire Suppression Line

CAUTION:
NOTE THAT ALL EXISTING UTILITIES MAY NOT BE SHOWN. EXISTING SERVICE CONNECTIONS ARE NOT SHOWN. ANY EXISTING UTILITIES THAT ARE SHOWN ARE SHOWN IN APPROXIMATE LOCATION ONLY. IT SHALL BE THE RESPONSIBILITY OF THE CONTRACTOR TO CONTACT ALL THE UTILITY OWNERS AND TO CONDUCT ALL NECESSARY FIELD INVESTIGATIONS PRIOR TO ANY EXCAVATION TO DETERMINE THE ACTUAL LOCATION OF UTILITIES AND OTHER IMPROVEMENTS.

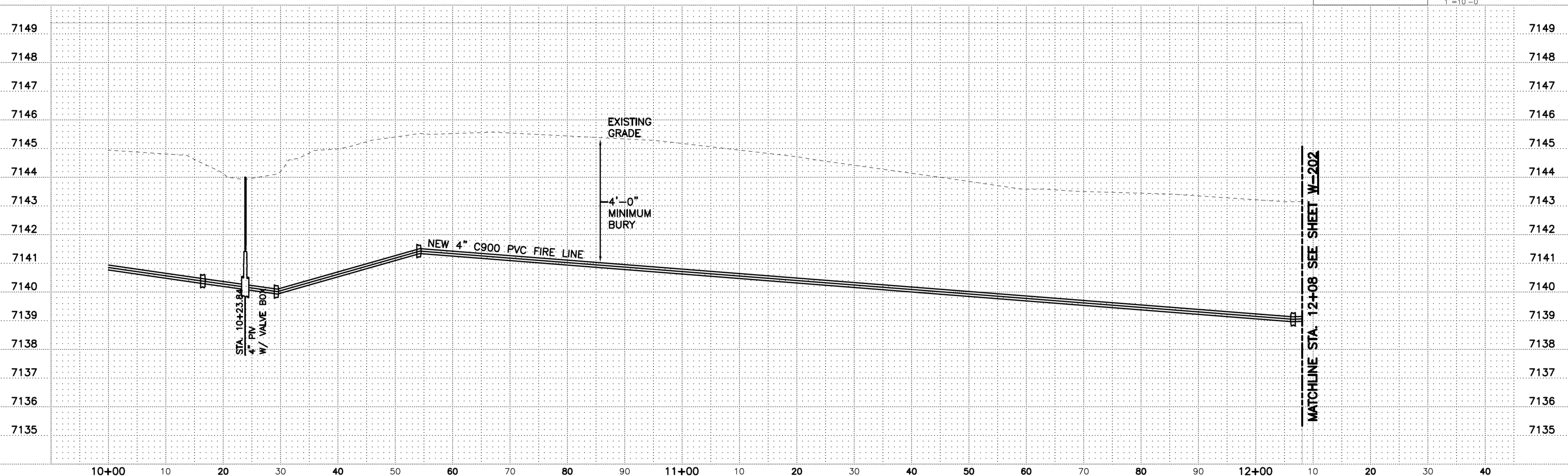
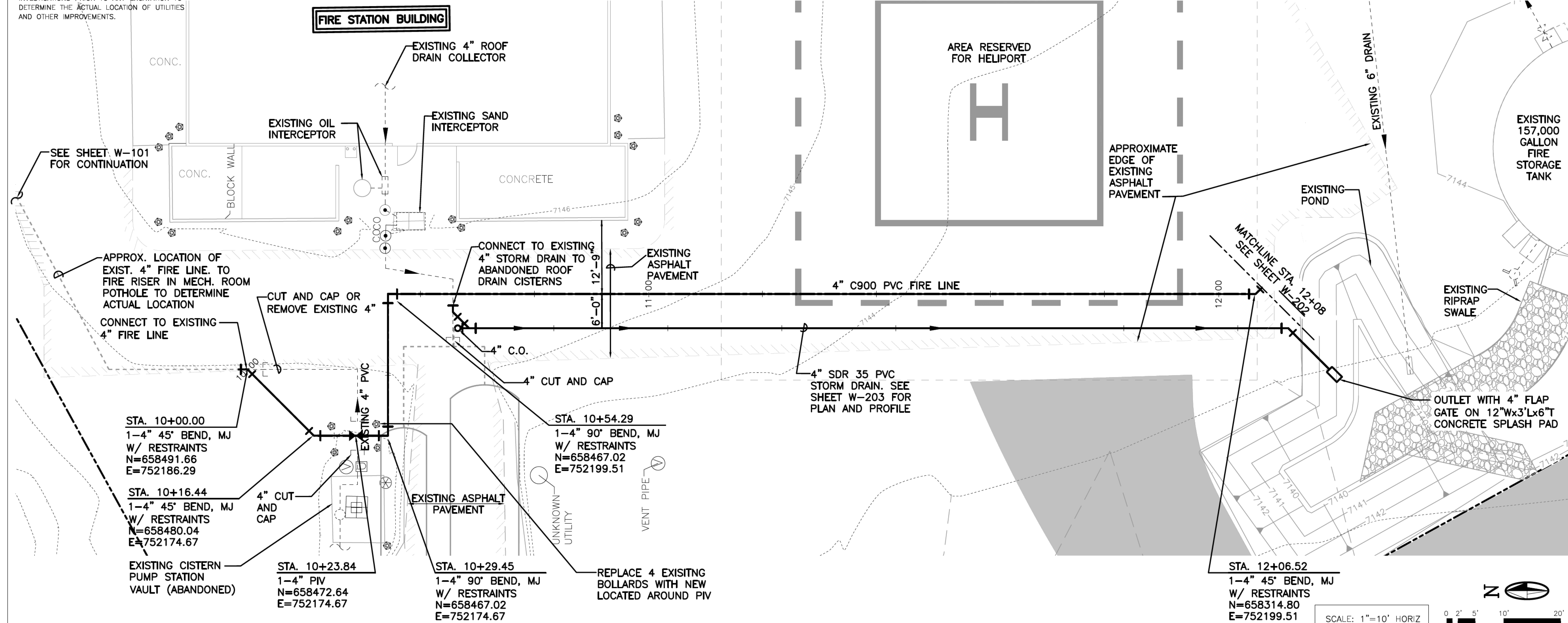
GENERAL NOTES

1. RESTRAIN ALL JOINTS.

MOLZENCORBIN

2701 Miles Road SE
Albuquerque, New Mexico 87106
505 242 5700
MoizenCorbin.com

NOTICE OF EXTENDED PAYMENT PROVISION: THIS CONTRACT ALLOWS THE OWNER TO MAKE PAYMENT WITHIN 45 DAYS AFTER SUBMISSION OF AN UNDISPUTED REQUEST FOR PAYMENT



SCALE: 1"=10' HORIZ
1"=2' VERT
0' 2' 5' 10' 20'
1"=10'-0"



REVISION			
SYMBOL	DATE	DESCRIPTION	BY

SANTA FE COUNTY
UTILITIES DIVISION 424 NM 599, SANTA FE, NM 87507

PROJECT NAME:
HONDO 2
FIRE SUPPRESSION LINE

STA. 10+00 TO 12+08
FIRE LINE PLAN AND PROFILE

APPROVED BY: SM REVIEWED BY: KM
DATE: AUGUST, 2023 SHEET: W-201
DRAWN BY: DJ

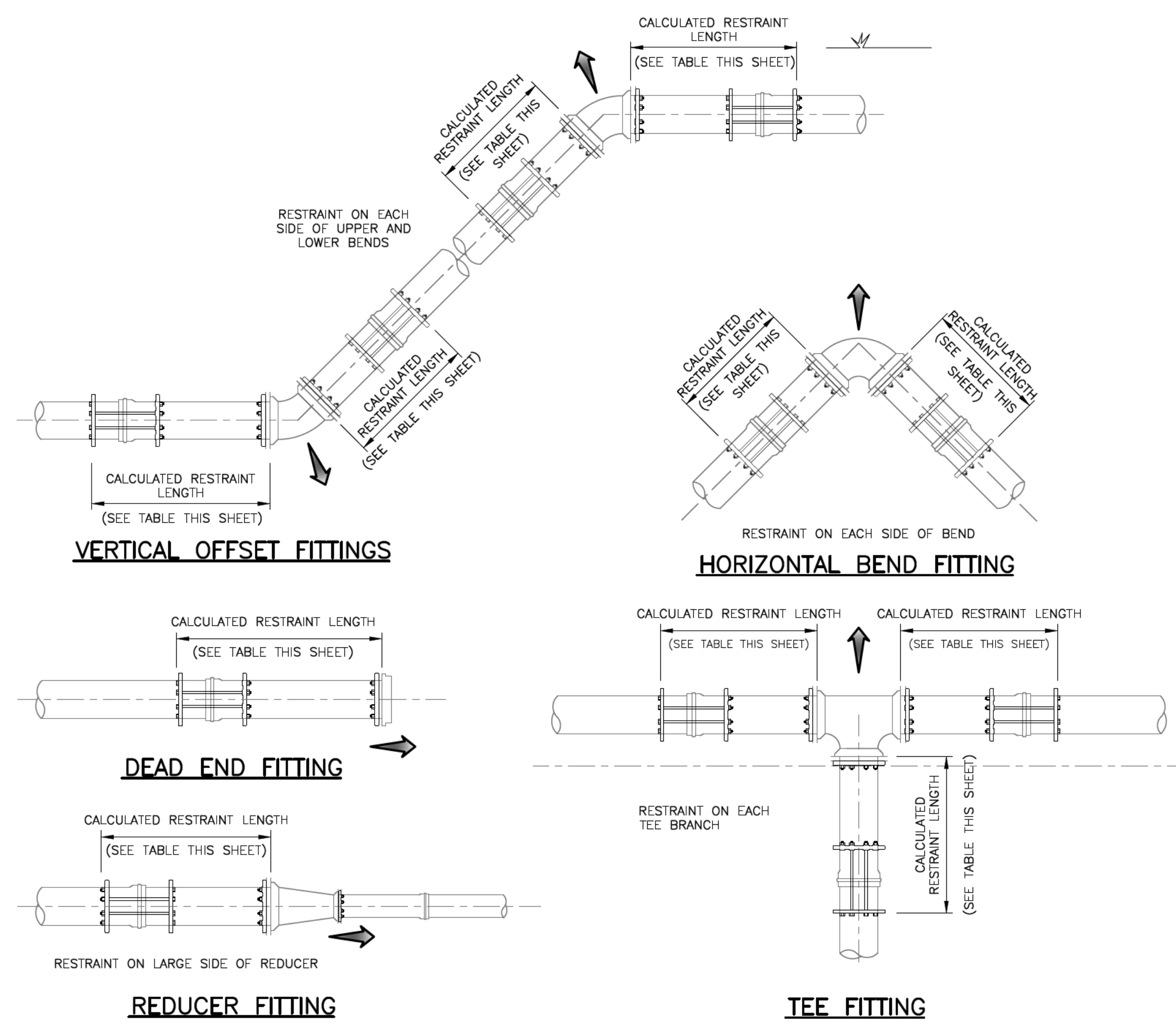
LAST MODIFIED: Sep. 26, 2023 - 9:15am
DWG. NAME: W-201-2023-11-3F County Arroyo Hondo 2 Bulk Water Station\W-201 Fire Suppression Line\

FITTING TYPE	PLASTIC PIPE										POLY WRAPPED DUCTILE									
	24-INCH	20-INCH	18-INCH	16-INCH	14-INCH	12-INCH	10-INCH	8-INCH	6-INCH	4-INCH	24-INCH	20-INCH	18-INCH	16-INCH	14-INCH	12-INCH	10-INCH	8-INCH	6-INCH	4-INCH
90° HORIZONTAL BEND (EACH SIDE)	64	56	50	45	42	36	30	26	20	15	70	60	55	50	44	40	32	28	22	16
45° HORIZONTAL BEND (EACH SIDE)	28	24	22	20	18	16	14	12	9	7	30	26	24	20	19	17	15	12	10	7
22.5° HORIZONTAL BEND (EACH SIDE)	14	12	11	10	10	8	7	6	4	4	15	13	12	10	10	9	8	7	5	4
11.25° HORIZONTAL BEND (EACH SIDE)	8	7	6	6	5	5	4	4	4	4	8	7	7	6	6	4	4	4	3	3
DEAD END	190	162	146	131	120	102	86	72	55	39	310	265	242	218	194	170	144	120	92	66
VALVE (EACH SIDE)	95	81	73	66	60	51	43	36	23	20	155	133	121	109	98	85	72	60	46	33
45° VERTICAL OFFSET (EACH SIDE OF HIGH SIDE/EACH SIDE OF LOW SIDE)																				
22.5° VERTICAL OFFSET (EACH SIDE OF HIGH SIDE/EACH SIDE OF LOW SIDE)																				
11.25° VERTICAL OFFSET (EACH SIDE OF HIGH SIDE/EACH SIDE OF LOW SIDE)																				

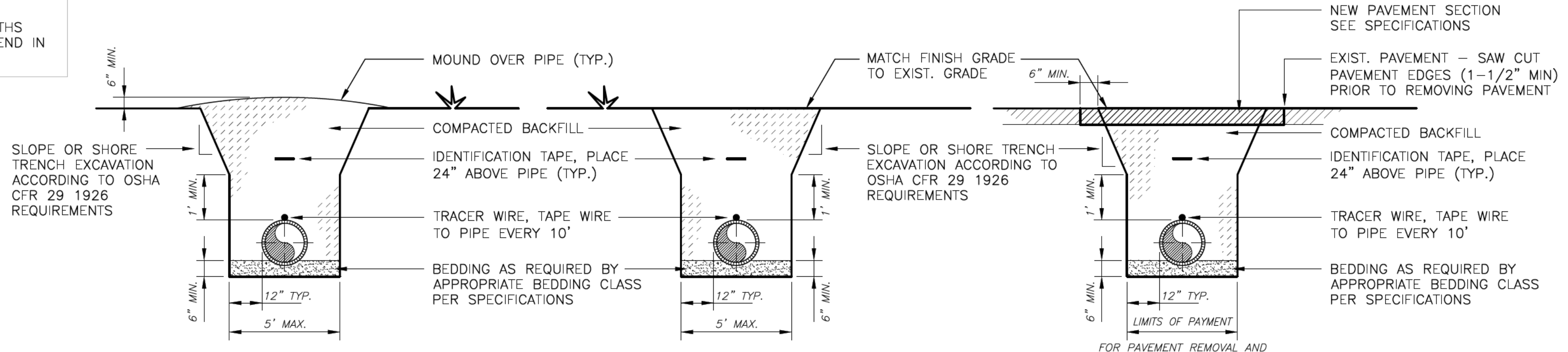
FITTING TYPE	RESTRAINED LENGTHS (FEET)	
	PLASTIC PIPE	POLY WRAPPED DUCTILE
24"x20" REDUCER (LENGTH TO BE RESTRAINED ON LARGE SIDE OF REDUCER)	58	94
24"x18" REDUCER (LENGTH TO BE RESTRAINED ON LARGE SIDE OF REDUCER)	82	134
24"x16" REDUCER (LENGTH TO BE RESTRAINED ON LARGE SIDE OF REDUCER)	104	170
20"x18" REDUCER (LENGTH TO BE RESTRAINED ON LARGE SIDE OF REDUCER)	30	50
20"x16" REDUCER (LENGTH TO BE RESTRAINED ON LARGE SIDE OF REDUCER)	58	94
20"x12" REDUCER (LENGTH TO BE RESTRAINED ON LARGE SIDE OF REDUCER)	102	166
18"x16" REDUCER (LENGTH TO BE RESTRAINED ON LARGE SIDE OF REDUCER)	30	50
18"x14" REDUCER (LENGTH TO BE RESTRAINED ON LARGE SIDE OF REDUCER)	56	94
18"x12" REDUCER (LENGTH TO BE RESTRAINED ON LARGE SIDE OF REDUCER)	80	132
16"x14" REDUCER (LENGTH TO BE RESTRAINED ON LARGE SIDE OF REDUCER)	30	50
16"x12" REDUCER (LENGTH TO BE RESTRAINED ON LARGE SIDE OF REDUCER)	56	94
16"x10" REDUCER (LENGTH TO BE RESTRAINED ON LARGE SIDE OF REDUCER)	78	130
14"x12" REDUCER (LENGTH TO BE RESTRAINED ON LARGE SIDE OF REDUCER)	32	50
14"x8" REDUCER (LENGTH TO BE RESTRAINED ON LARGE SIDE OF REDUCER)	78	126
14"x6" REDUCER (LENGTH TO BE RESTRAINED ON LARGE SIDE OF REDUCER)	96	154
12"x10" REDUCER (LENGTH TO BE RESTRAINED ON LARGE SIDE OF REDUCER)	30	50
12"x8" REDUCER (LENGTH TO BE RESTRAINED ON LARGE SIDE OF REDUCER)	54	90
12"x6" REDUCER (LENGTH TO BE RESTRAINED ON LARGE SIDE OF REDUCER)	75	124
10"x8" REDUCER (LENGTH TO BE RESTRAINED ON LARGE SIDE OF REDUCER)	30	49
10"x6" REDUCER (LENGTH TO BE RESTRAINED ON LARGE SIDE OF REDUCER)	52	88
8"x6" REDUCER (LENGTH TO BE RESTRAINED ON LARGE SIDE OF REDUCER)	30	50
8"x4" REDUCER (LENGTH TO BE RESTRAINED ON LARGE SIDE OF REDUCER)	52	86
8"x3" REDUCER (LENGTH TO BE RESTRAINED ON LARGE SIDE OF REDUCER)	58	98
6"x4" REDUCER (LENGTH TO BE RESTRAINED ON LARGE SIDE OF REDUCER)	28	48
6"x3" REDUCER (LENGTH TO BE RESTRAINED ON LARGE SIDE OF REDUCER)	36	61
24"x24"x24" TEE (LENGTH ALONG RUN EA. SIDE OF TEE/ALONG BRANCH)		
20"x20"x20" TEE (LENGTH ALONG RUN EA. SIDE OF TEE/ALONG BRANCH)		
18"x18"x18" TEE (LENGTH ALONG RUN EA. SIDE OF TEE/ALONG BRANCH)		
16"x16"x16" TEE (LENGTH ALONG RUN EA. SIDE OF TEE/ALONG BRANCH)		
14"x14"x14" TEE (LENGTH ALONG RUN EA. SIDE OF TEE/ALONG BRANCH)		
12"x12"x12" TEE (LENGTH ALONG RUN EA. SIDE OF TEE/ALONG BRANCH)		
10"x10"x10" TEE (LENGTH ALONG RUN EA. SIDE OF TEE/ALONG BRANCH)		
8"x8"x8" TEE (LENGTH ALONG RUN EA. SIDE OF TEE/ALONG BRANCH)		
6"x6"x6" TEE (LENGTH ALONG RUN EA. SIDE OF TEE/ALONG BRANCH)		
4"x4"x4" TEE (LENGTH ALONG RUN EA. SIDE OF TEE/ALONG BRANCH)		

INSTALL EBAA IRON MEGALUG(TM) JOINT RESTRAINTS AT ALL FITTINGS AND JOINTS WHICH FALL WITHIN THE FOLLOWING LENGTHS OF EACH SIDE OF FITTINGS AS SHOWN IN TABLE.

REFER TO NEXT LARGEST RESTRAINED LENGTH FOR ALL HORIZONTAL BEND FITTING COMBINATIONS. ADD RESTRAINED LENGTHS FOR ALL HORIZONTAL BEND FITTING COMBINATIONS. FOR EXAMPLE, THE RESTRAINED LENGTH FOR A 24 INCH PVC, 45°-BEND IN COMBO WITH A 11.25°-BEND SHOULD BE 44 FEET.



PIPE RESTRAINT REQUIREMENTS
SCALE: NONE



TRENCH COMPACTION DETAILS
SCALE: NONE

GENERAL NOTES FOR TRENCHING:

- PIPE BEDDING REQUIREMENTS, SEE SPECIFICATIONS
- PIPE IDENTIFICATION TAPE REQUIREMENTS, SEE SPECIFICATIONS
- TRENCH BACKFILL COMPACTION REQUIREMENTS, SEE SPECIFICATIONS

MOLZENCORBIN
2701 Miles Road SE
Albuquerque, New Mexico 87106
505 242 5700
MozenCorbin.com

NOTICE OF EXTENDED PAYMENT PROVISION: THIS CONTRACT ALLOWS THE OWNER TO MAKE PAYMENT WITHIN 45 DAYS AFTER SUBMISSION OF AN UNDISPUTED REQUEST FOR PAYMENT



REVISION			
SYMBOL	DATE:	DESCRIPTION:	BY:

SANTA FE COUNTY
UTILITIES DIVISION 424 NM 599, SANTA FE, NM 87507

PROJECT NAME:
**HONDO 2
FIRE SUPPRESSION LINE**

DETAILS 1

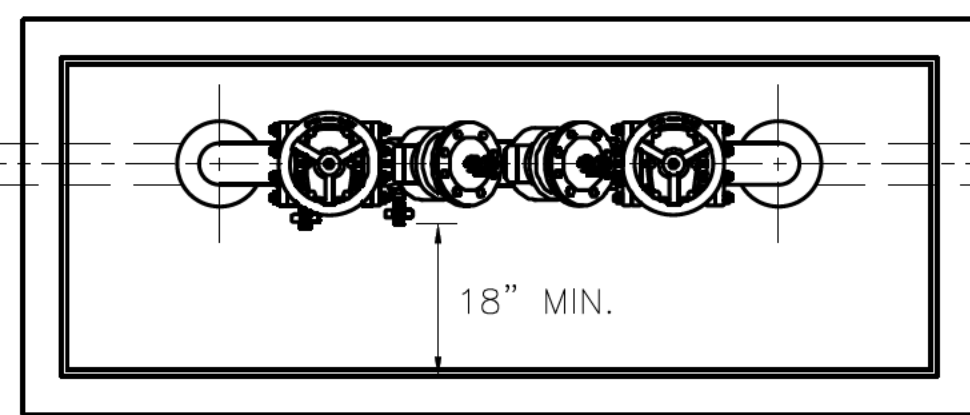
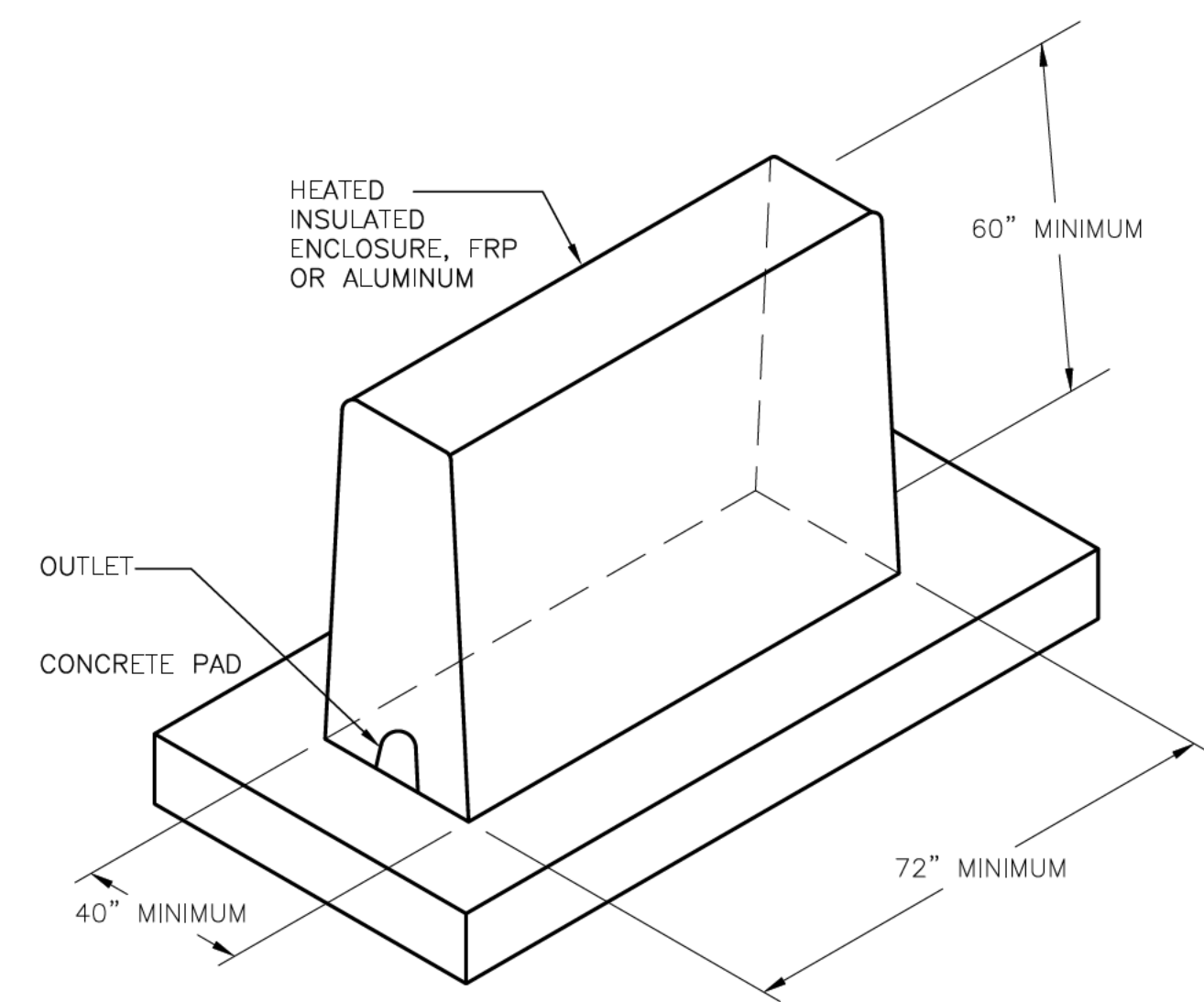
APPROVED BY: SM REVIEWED BY: KM
DATE: AUGUST, 2023 SHEET: W-501
DRAWN BY: DJ

LAST MODIFIED: Sep. 26, 2023 -- 9:13am
DWG. NAME: W-501
COUNTY: Santa Fe
PROJECT: Hondo 2 Fire Suppression Line

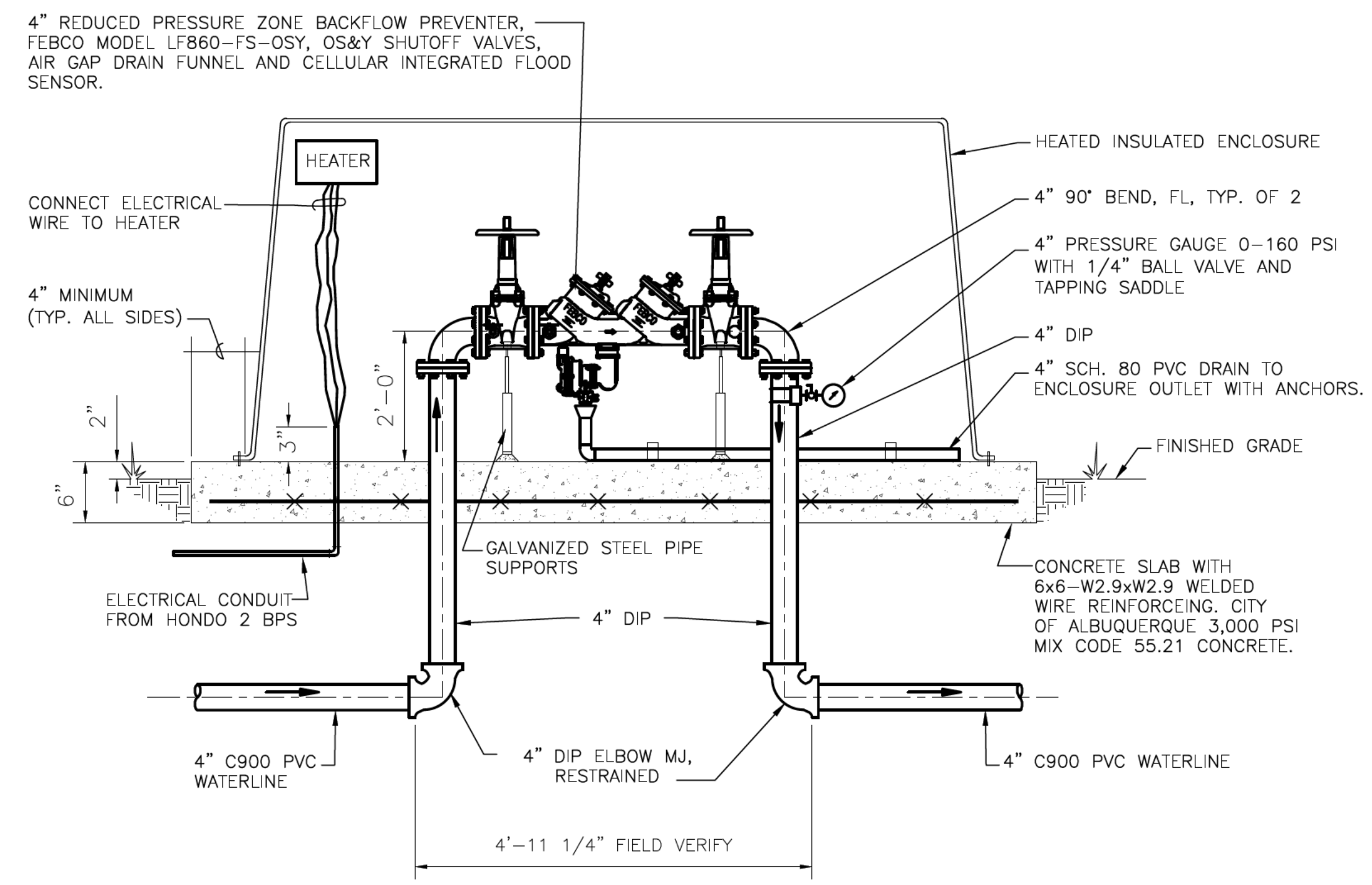
MOLZENCORBIN

2701 Miles Road SE
Albuquerque, New Mexico 87106
505 242 5700
MoizenCorbin.com

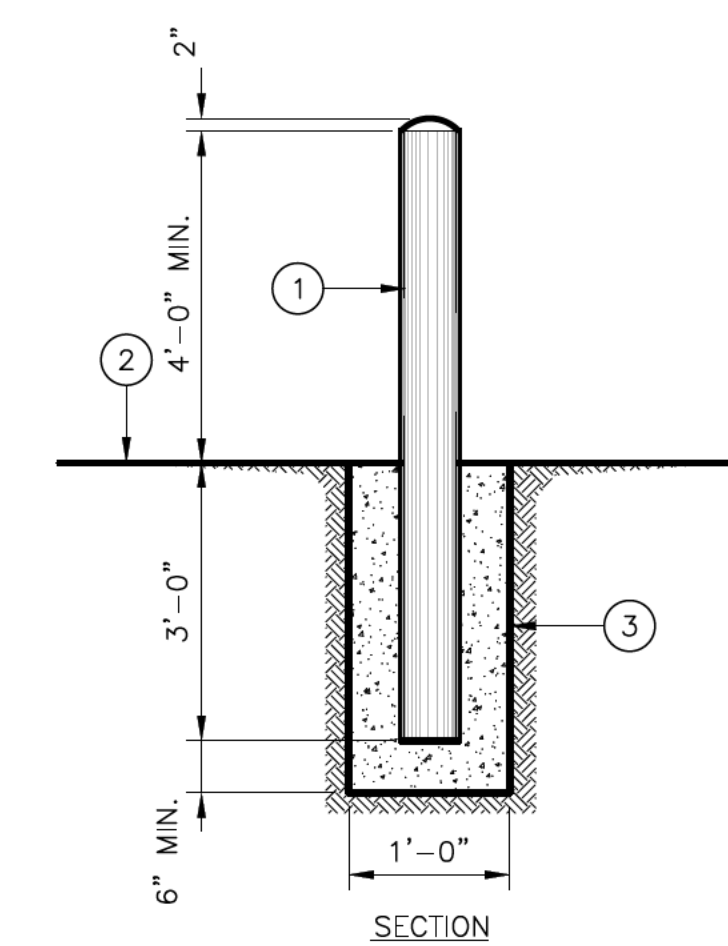
NOTICE OF EXTENDED PAYMENT PROVISION; THIS CONTRACT ALLOWS THE OWNER TO MAKE PAYMENT WITHIN 45 DAYS AFTER SUBMISSION OF AN UNDISPUTED REQUEST FOR PAYMENT



BACKFLOW PREVENTER – PLAN
SCALE: NONE



BACKFLOW PREVENTER – SECTION
SCALE: NONE



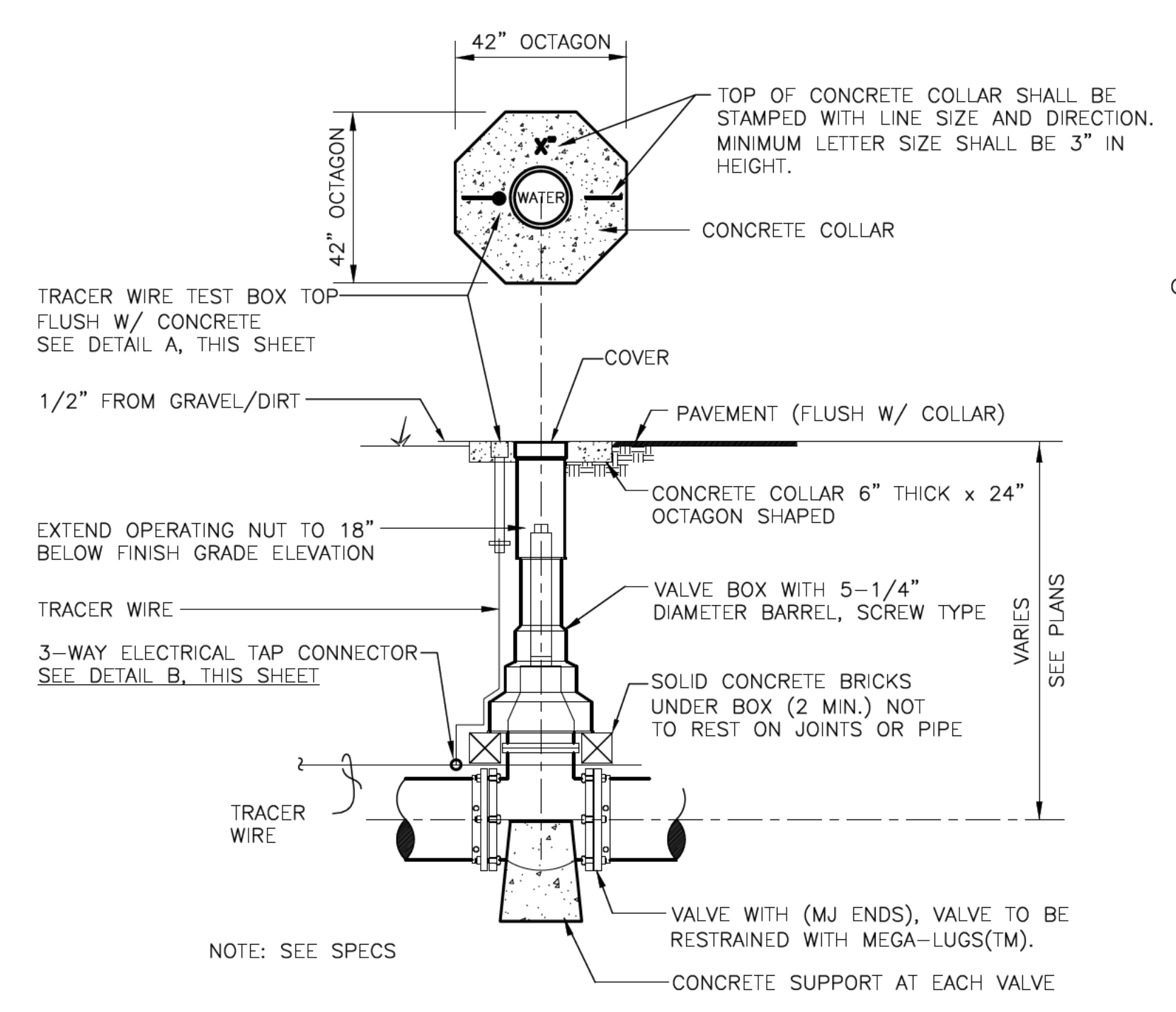
PIPE BOLLARD – DETAIL
SCALE: NONE

GENERAL NOTES

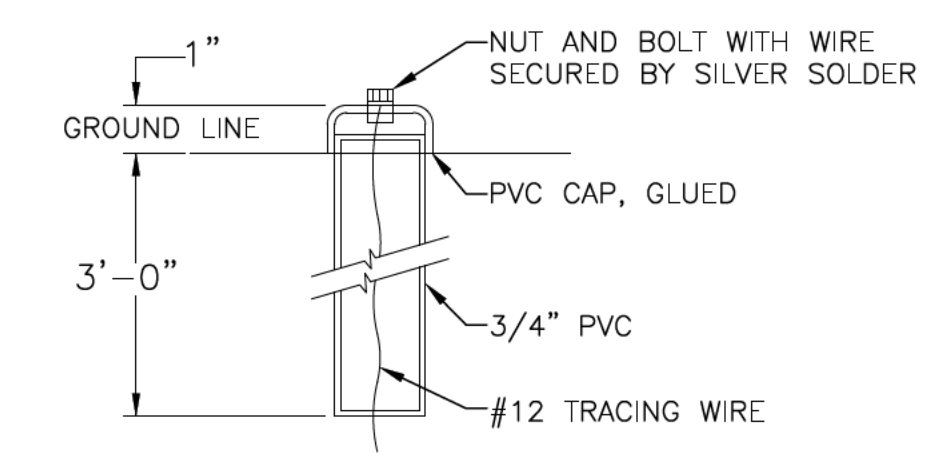
- 1. WELDS ARE TO BE GROUND SMOOTH

CONSTRUCTION NOTES

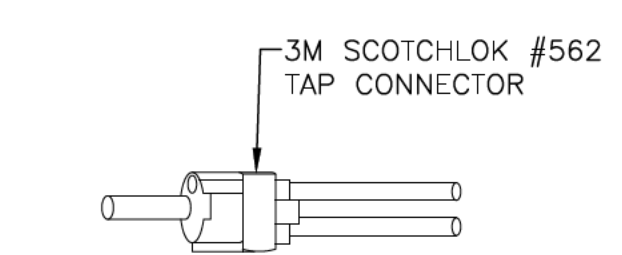
- ① 6" NOMINAL DIA SCH 40 STEEL PIPE PAINT PIPE BRIGHT YELLOW (REFLECTIVE) ABOVE FINISH GRADE FILLED WITH CONCRETE
- ② PAVEMENT OR FINISHED GRADE
- ③ CONCRETE (12" DIA. COLLAR)



TYPICAL DETAIL FOR GATE VALVES
SCALE: NONE



DETAIL A TEST BOX



NOTE: WRAP CONNECTOR AND WIRE ENDS WITH GENERAL PURPOSE TAPE SEALANT TO MAKE THE CONNECTION MOISTURE PROOF (NOT SHOWN).

DETAIL B ELECTRICAL TAP CONNECTOR



REVISION

SYMBOL	DATE:	DESCRIPTION:	BY:

SANTA FE COUNTY
UTILITIES DIVISION 424 NM 599, SANTA FE, NM 87507

PROJECT NAME:
**HONDO 2
FIRE SUPPRESSION LINE**

APPROVED BY: SM REVIEWED BY: KM
DATE: AUGUST, 2023 SHEET: W-502
DRAWN BY: DJ

LAST MODIFIED: Sep. 26, 2023 - 9:12am
DWG. NAME: W-502-049
COUNTY: Santa Fe
PROJECT: Hondo 2 Bulk Water Station/WMS Fire Suppression Line