

**CAUTION:**  
NOTE THAT ALL EXISTING UTILITIES MAY NOT BE SHOWN. EXISTING SERVICE CONNECTIONS ARE NOT SHOWN. ANY EXISTING UTILITIES THAT ARE SHOWN ARE SHOWN IN APPROXIMATE LOCATION ONLY. IT SHALL BE THE RESPONSIBILITY OF THE CONTRACTOR TO CONTACT ALL THE UTILITY OWNERS AND TO CONDUCT ALL NECESSARY FIELD INVESTIGATIONS PRIOR TO ANY EXCAVATION TO DETERMINE THE ACTUAL LOCATION OF UTILITIES AND OTHER IMPROVEMENTS.

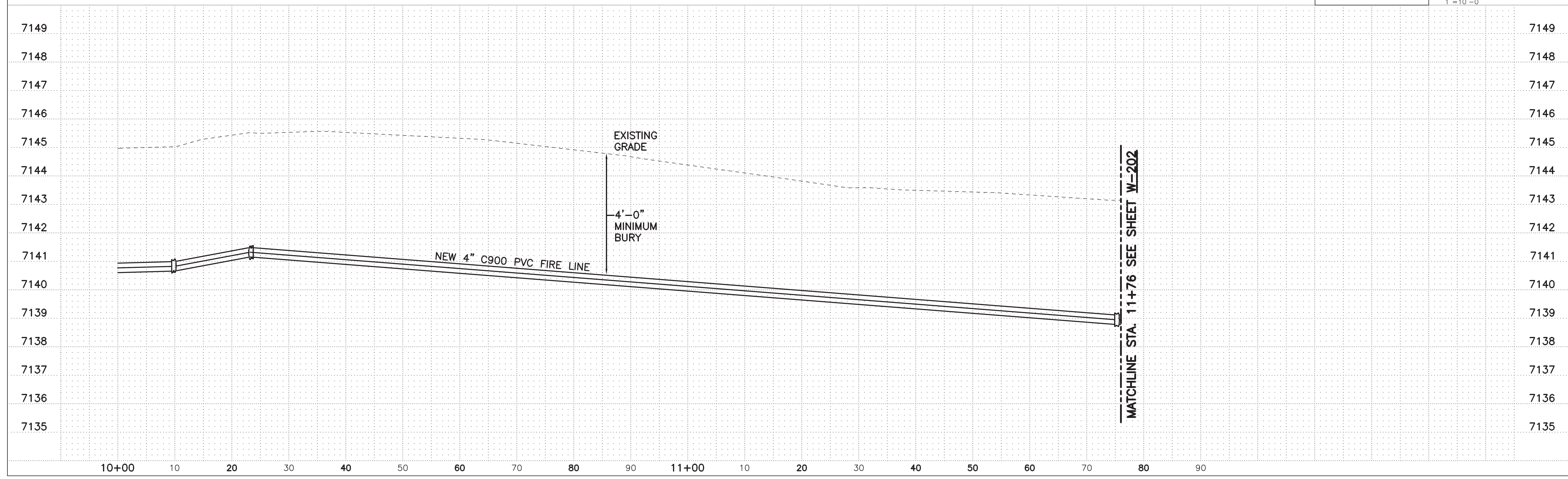
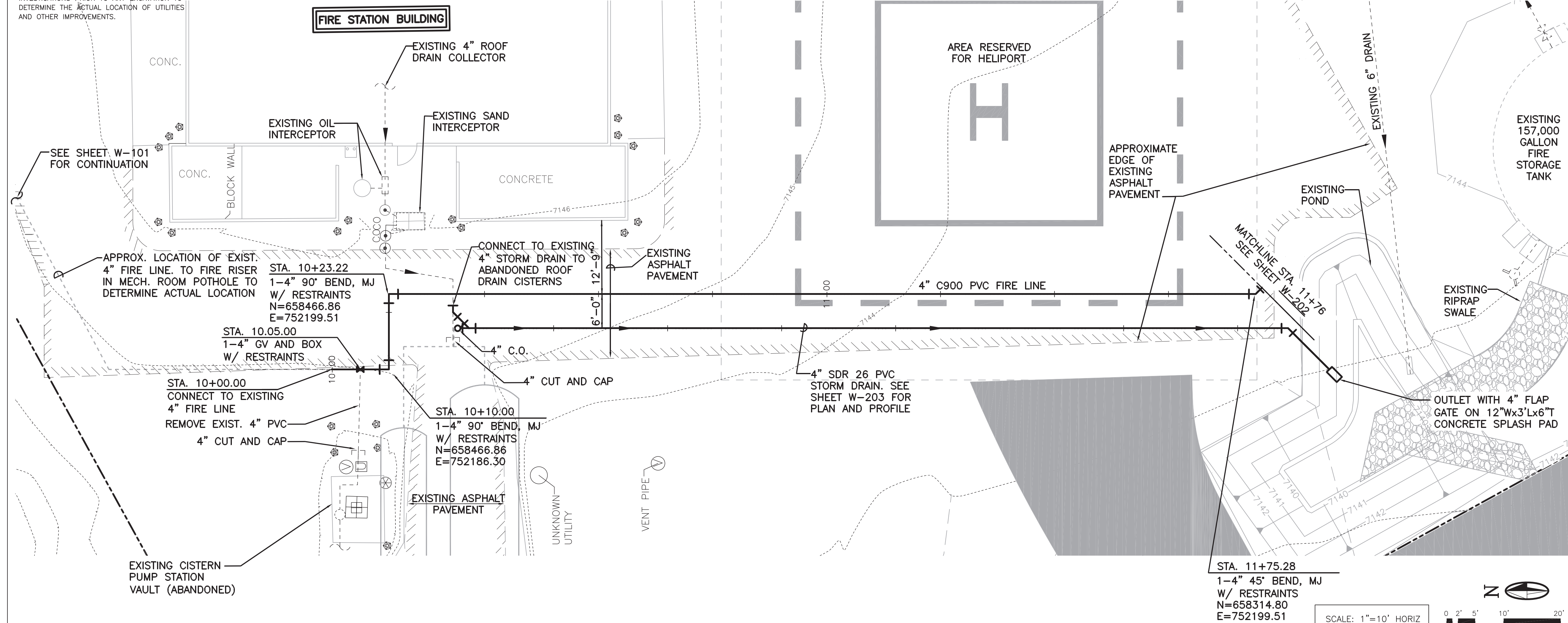
**GENERAL NOTES**

1. RESTRAIN ALL JOINTS.

**MOLZENCORBIN**

2701 Miles Road SE  
Albuquerque, New Mexico 87106  
505 242 5700  
MolzenCorbin.com

NOTICE OF EXTENDED PAYMENT PROVISION: THIS CONTRACT ALLOWS THE OWNER TO MAKE PAYMENT WITHIN 45 DAYS AFTER SUBMISSION OF AN UNDISPUTED REQUEST FOR PAYMENT



REVISION			
SYMBOL	DATE	DESCRIPTION	BY:

**SANTA FE COUNTY**  
UTILITIES DIVISION 424 NM 599, SANTA FE, NM 87507

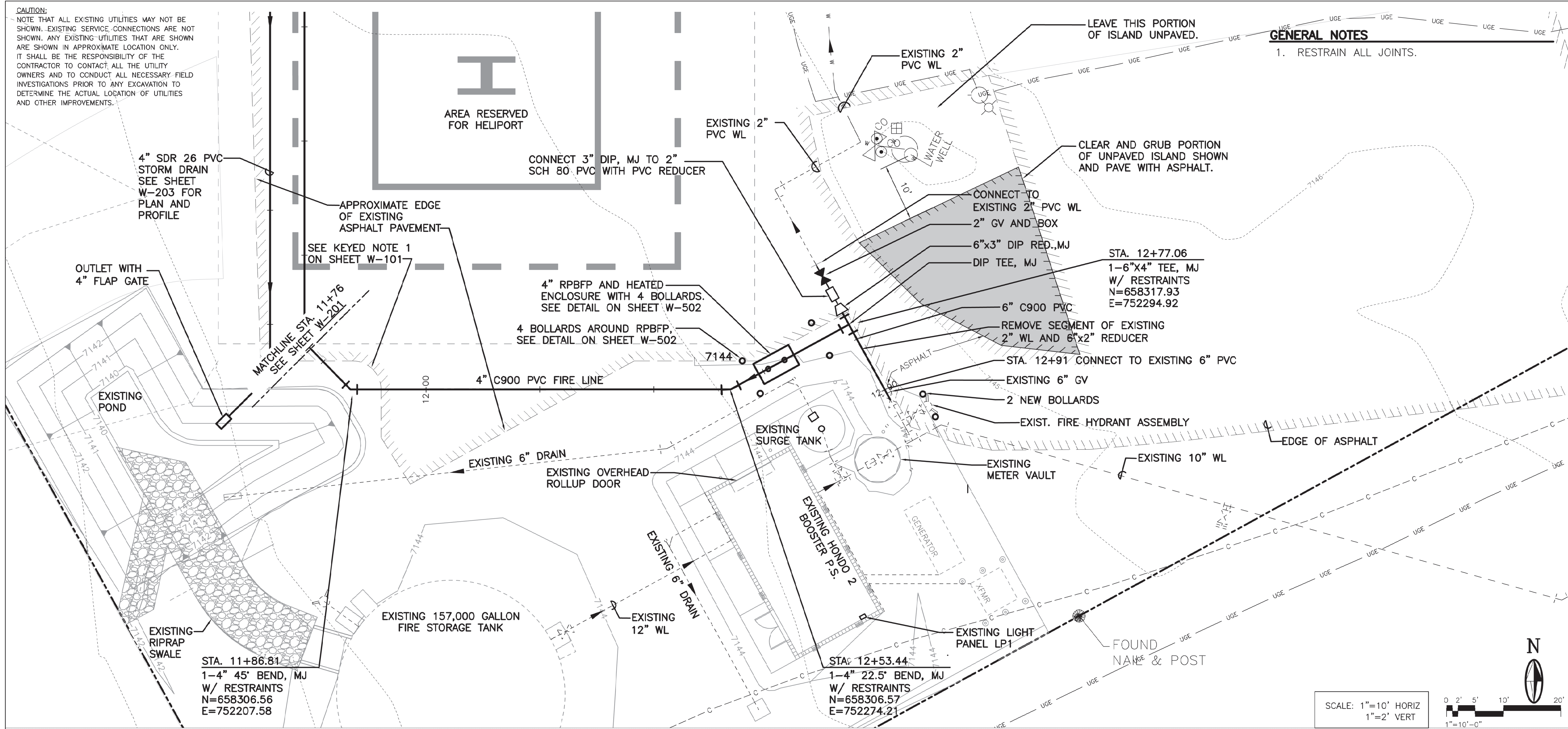
PROJECT NAME:  
HONDO 2  
FIRE SUPPRESSION LINE

STA. 10+00 TO 11+76  
FIRE LINE PLAN AND PROFILE

APPROVED BY: SM      REVIEWED BY: KM  
DATE: AUGUST, 2023      SHEET: W-201  
DRAWN BY: DJ

LAST MODIFIED: May 29, 2024 - 7:44am  
 DWG NAME: W-201-2023-11-30 County Arroyo Honda 2 Bulk Water Station\WDS\Fire Suppression Line\

**CAUTION:**  
NOTE THAT ALL EXISTING UTILITIES MAY NOT BE SHOWN. EXISTING SERVICE CONNECTIONS ARE NOT SHOWN. ANY EXISTING UTILITIES THAT ARE SHOWN ARE SHOWN IN APPROXIMATE LOCATION ONLY. IT SHALL BE THE RESPONSIBILITY OF THE CONTRACTOR TO CONTACT ALL THE UTILITY OWNERS AND TO CONDUCT ALL NECESSARY FIELD INVESTIGATIONS PRIOR TO ANY EXCAVATION TO DETERMINE THE ACTUAL LOCATION OF UTILITIES AND OTHER IMPROVEMENTS.



**GENERAL NOTES**  
1. RESTRAIN ALL JOINTS.

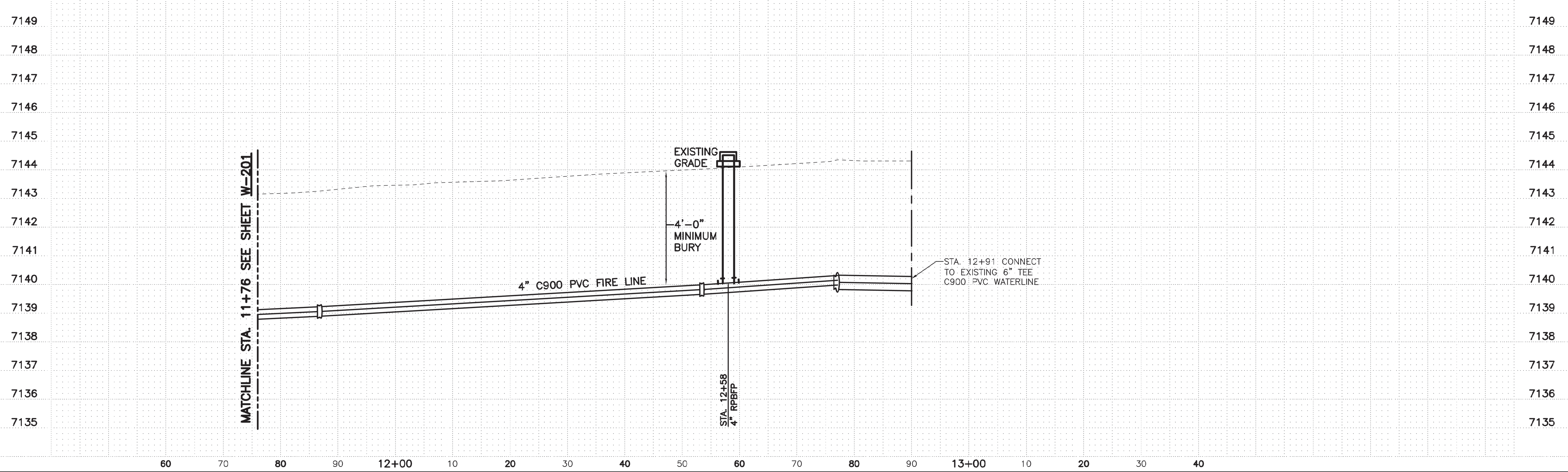
**MOLZENCORBIN**

2701 Miles Road SE  
Albuquerque, New Mexico 87106  
505 242 5700  
MolzenCorbin.com

NOTICE OF EXTENDED PAYMENT PROVISION: THIS CONTRACT ALLOWS THE OWNER TO MAKE PAYMENT WITHIN 45 DAYS AFTER SUBMISSION OF AN UNDISPUTED REQUEST FOR PAYMENT



SCALE: 1"=10' HORIZ  
1"=2' VERT  
1"=10'-0"



REVISION			
SYMBOL	DATE	DESCRIPTION	BY:

**SANTA FE COUNTY**  
UTILITIES DIVISION 424 NM 599, SANTA FE, NM 87507

**PROJECT NAME:**  
HONDO 2  
FIRE SUPPRESSION LINE

STA. 11+76 TO 12+91  
FIRE LINE PLAN AND PROFILE

APPROVED BY: SM	REVIEWED BY: KM
DATE: AUGUST, 2023	SHEET: W-202
DRAWN BY: DJ	

LAST MODIFIED: May 29, 2024 - 8:39am  
 PWC NAME: W-202  
 COUNTY ARMY: Santa Fe County  
 PROJECT: Hondo 2 Bulk Water Station (W-202) (Fire Suppression Line)

**CAUTION:**  
NOTE THAT ALL EXISTING UTILITIES MAY NOT BE SHOWN. EXISTING SERVICE CONNECTIONS ARE NOT SHOWN. ANY EXISTING UTILITIES THAT ARE SHOWN ARE SHOWN IN APPROXIMATE LOCATION ONLY. IT SHALL BE THE RESPONSIBILITY OF THE CONTRACTOR TO CONTACT ALL THE UTILITY OWNERS AND TO CONDUCT ALL NECESSARY FIELD INVESTIGATIONS PRIOR TO ANY EXCAVATION TO DETERMINE THE ACTUAL LOCATION OF UTILITIES AND OTHER IMPROVEMENTS.

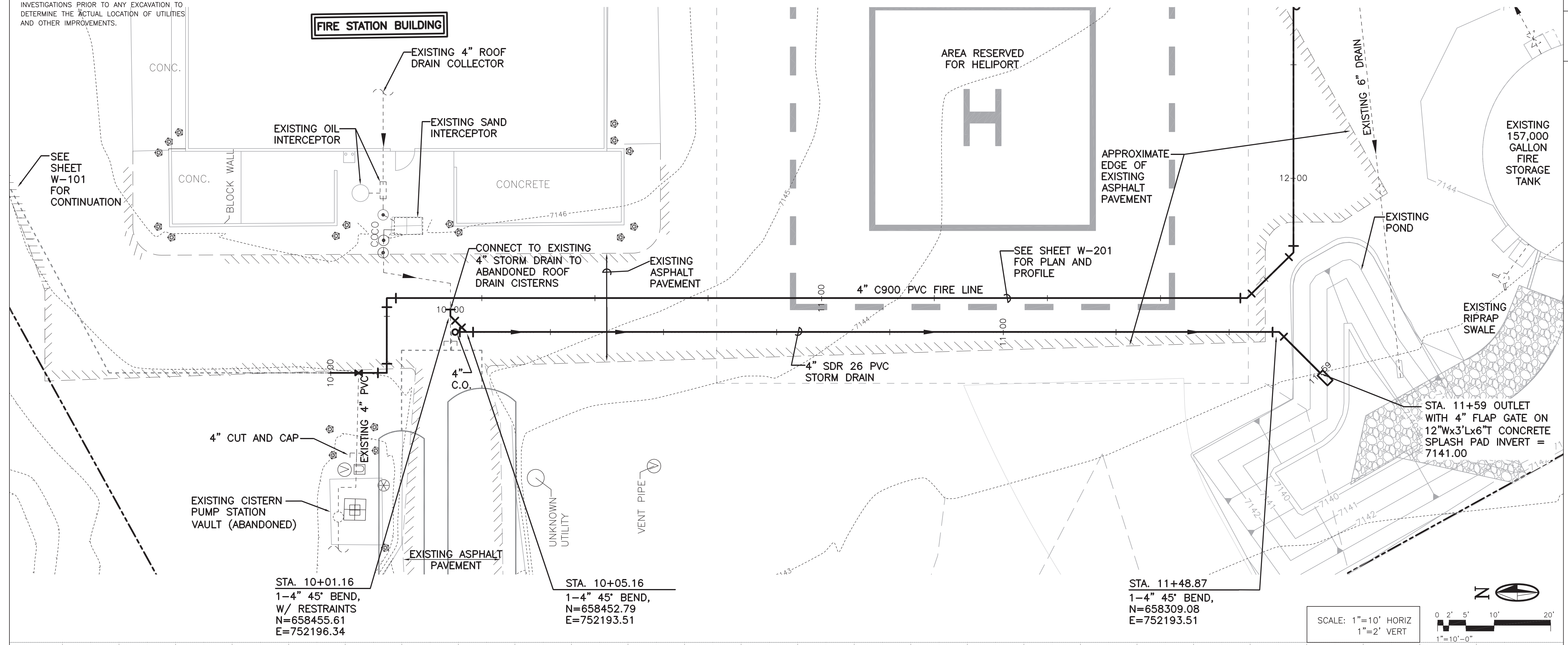
**GENERAL NOTES**

1. RESTRAIN ALL JOINTS.

**MOLZENCORBIN**

2701 Miles Road SE  
Albuquerque, New Mexico 87106  
505 242 5700  
MolzenCorbin.com

NOTICE OF EXTENDED PAYMENT PROVISION: THIS CONTRACT ALLOWS THE OWNER TO MAKE PAYMENT WITHIN 45 DAYS AFTER SUBMISSION OF AN UNDISPUTED REQUEST FOR PAYMENT.

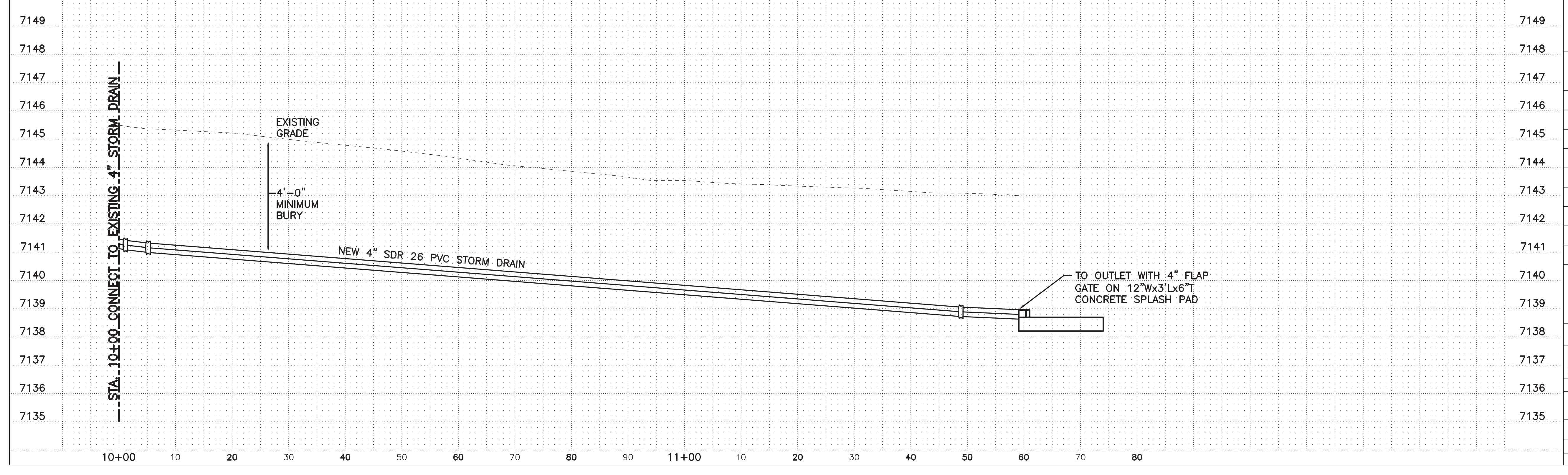
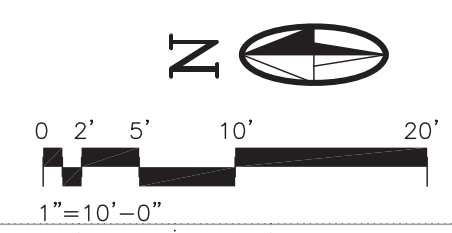


STA. 10+01.16  
1-4" 45' BEND,  
W/ RESTRAINTS  
N=658455.61  
E=752196.34

STA. 10+05.16  
1-4" 45' BEND,  
N=658452.79  
E=752193.51

STA. 11+48.87  
1-4" 45' BEND,  
N=658309.08  
E=752193.51

SCALE: 1"=10' HORIZ  
1"=2' VERT



REVISION			
SYMBOL	DATE	DESCRIPTION	BY

**SANTA FE COUNTY**  
UTILITIES DIVISION 424 NM 599, SANTA FE, NM 87507

PROJECT NAME:  
**HONDO 2  
FIRE SUPPRESSION LINE**

STA. 10+00 TO 11+59  
**STORM DRAIN PLAN AND PROFILE**

APPROVED BY: SM REVIEWED BY: KM  
DATE: AUGUST, 2023 SHEET: W-203  
DRAWN BY: DJ

LAST MODIFIED: May 29, 2024 - 7:42am  
 PWC NAME: W-203-1131-1132-1133-1134-1135  
 COUNTY: Arroyo Hondo 2 Bulk Water Station\WWS\Fire Suppression Line\

**MOLZENCORBIN**

2701 Miles Road SE  
Albuquerque, New Mexico 87106  
505 242 5700  
MolzenCorbin.com

*NOTICE OF EXTENDED PAYMENT PROVISION; THIS CONTRACT ALLOWS THE OWNER TO MAKE PAYMENT WITHIN 45 DAYS AFTER SUBMISSION OF AN UNDISPUTED REQUEST FOR PAYMENT*

**GENERAL NOTES**

1. WELDS ARE TO BE GROUND SMOOTH

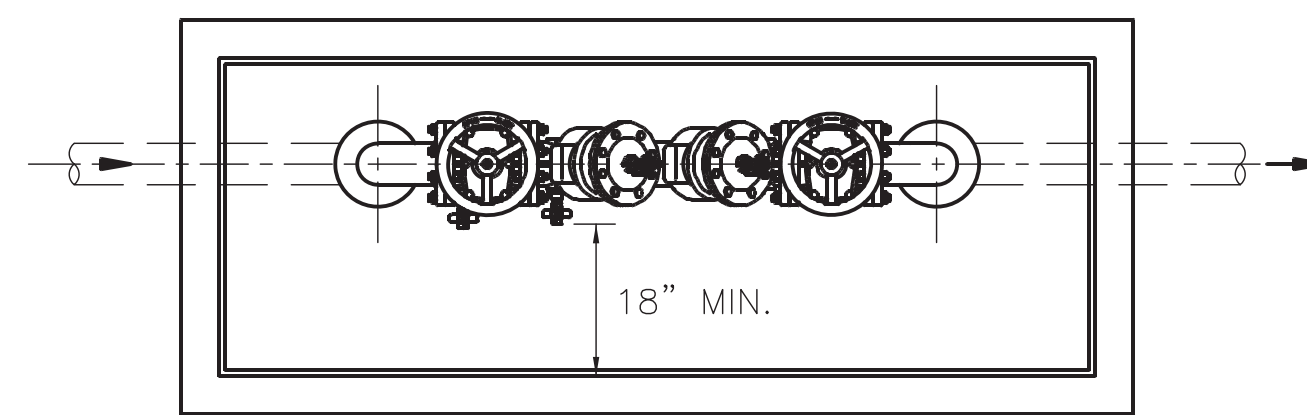
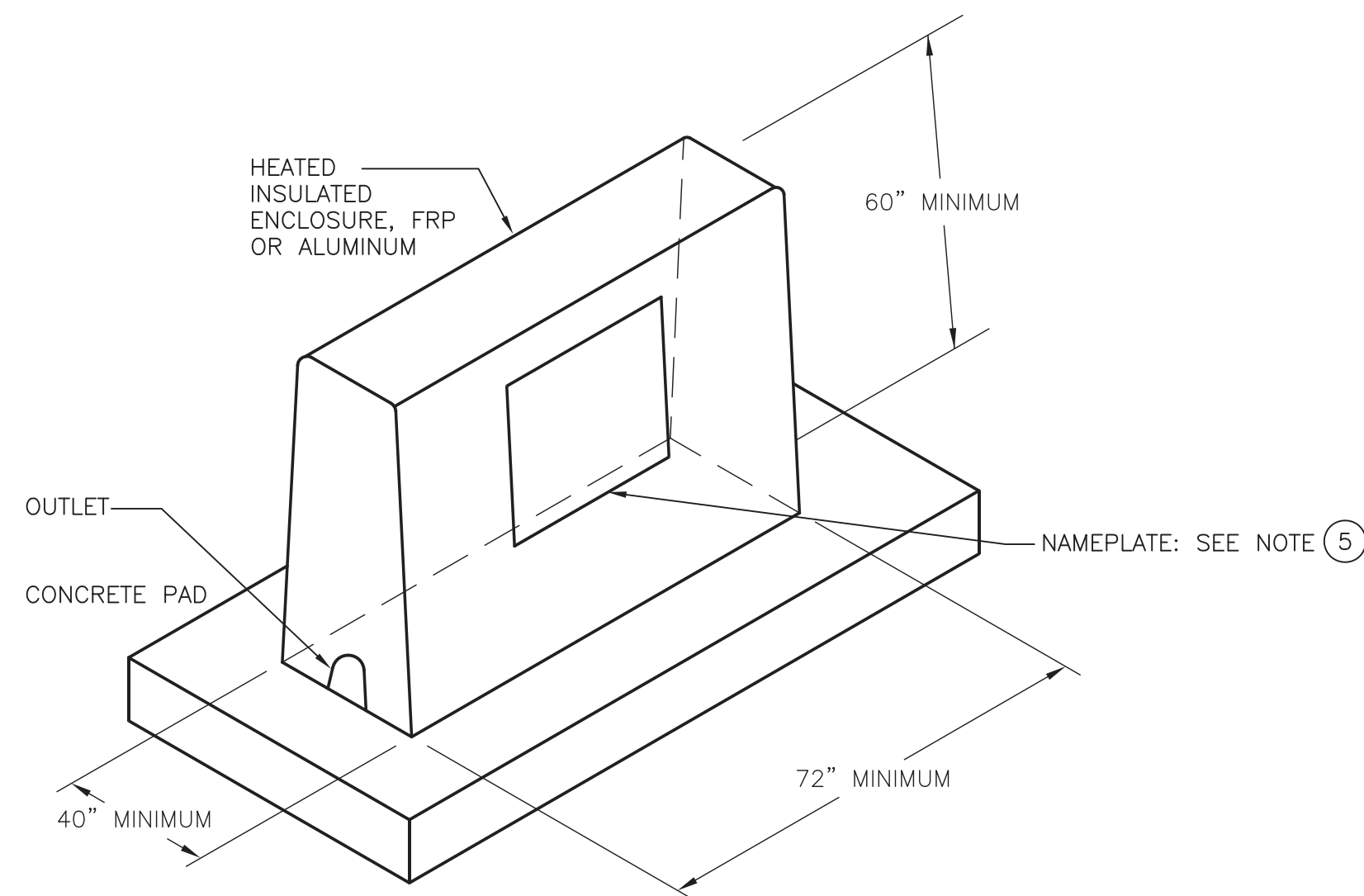
**CONSTRUCTION NOTES**

- 1 6" NOMINAL DIA SCH 40 STEEL PIPE PAINT PIPE BRIGHT YELLOW (REFLECTIVE) ABOVE FINISH GRADE FILLED WITH CONCRETE
- 2 PAVEMENT OR FINISHED GRADE
- 3 CONCRETE (12" DIA. COLLAR)
- 4 RUN TWO #12 AND ONE #12G IN 3/4" PVC CONDUIT TO HEATED INSULATED ENCLOSURE FROM SPARE 120VAC CIRCUIT IN EXISTING LIGHT PANEL LP1 LOCATED INSIDE HONDO 2 BOOSTER PUMP STATION AS SHOWN ON SHEET W-202. PROVIDE 15A SINGLE POLE BREAKER IN LP1.
- 5 NAMEPLATE INSTALLED ON FIRE STATION SIDE OF HEATED INSULATED ENCLOSURE:

A. TEXT:

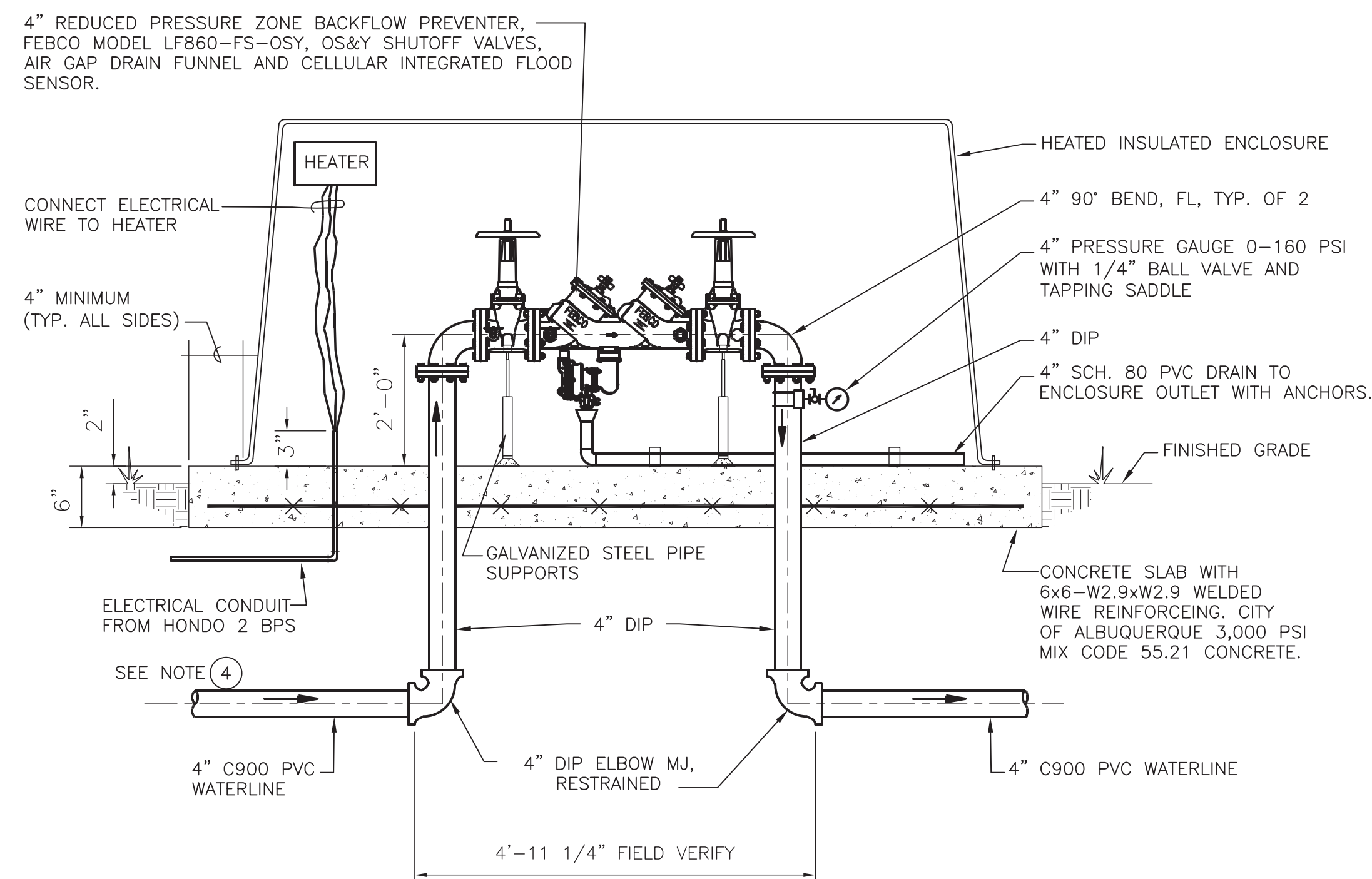
**FIRE STATION  
SPRINKLER SYSTEM**

- MATERIAL: TYPE 316 STAINLESS STEEL, 0.050" THICK
- LETTERING: 1" HIGH, BOLD CAPITAL LETTERS, LASER FUSED BRUSHED STAINLESS STEEL.
- MOUNTING: MOUNT TO ENCLOSURE WITH FOUR STAINLESS STEEL FASTENERS.



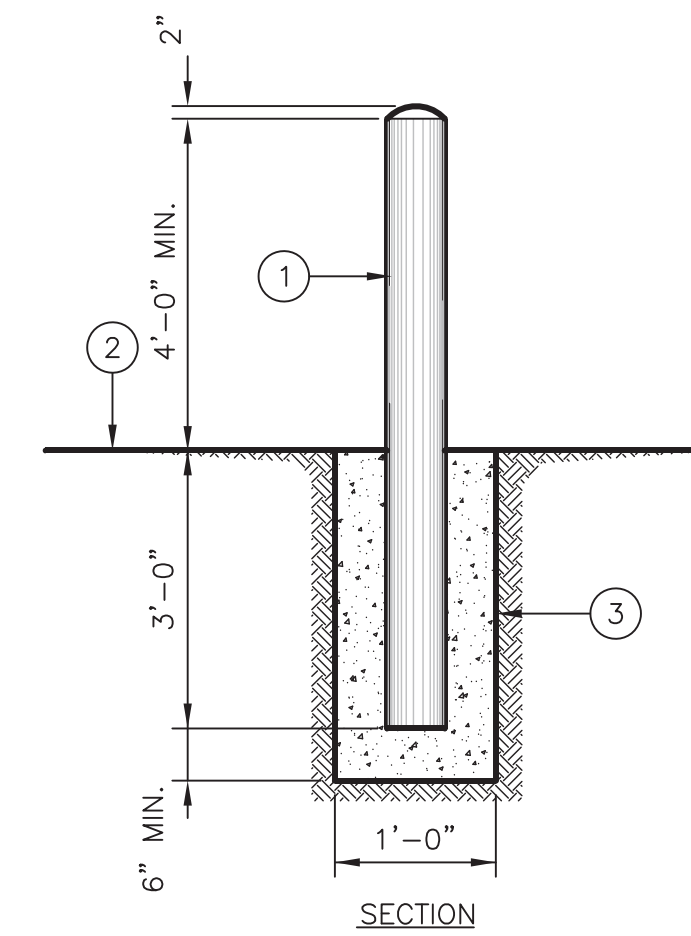
**BACKFLOW PREVENTER - PLAN**

SCALE: NONE



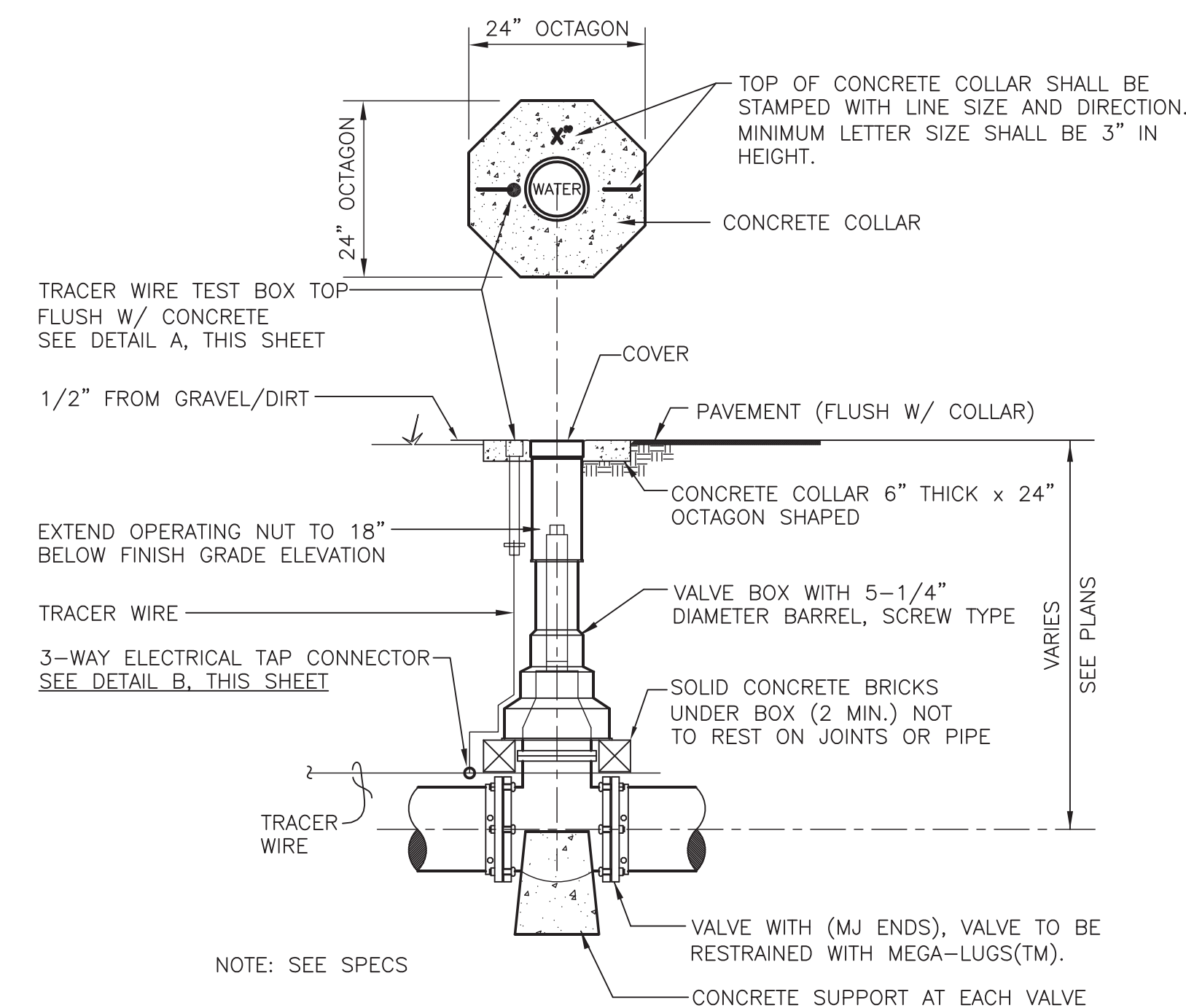
**BACKFLOW PREVENTER - SECTION**

SCALE: NONE



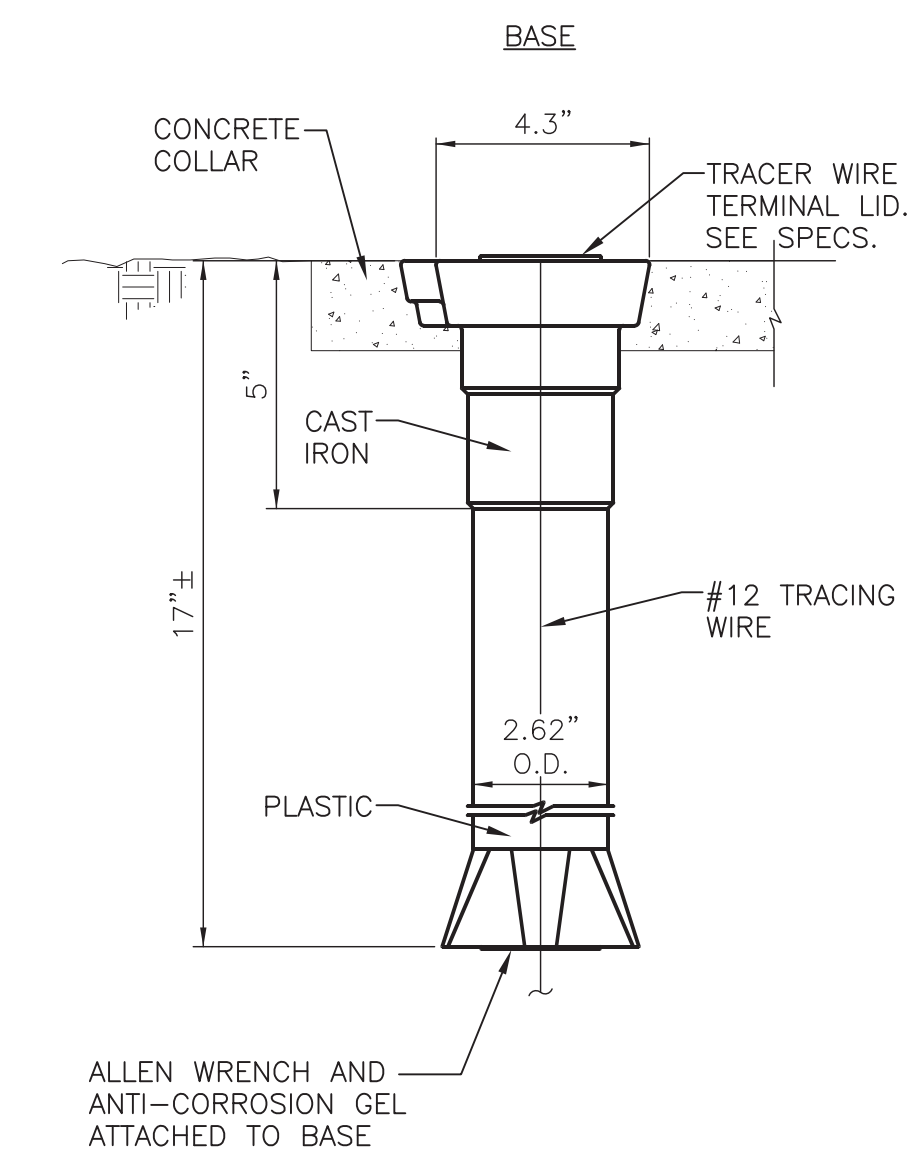
**PIPE BOLLARD - DETAIL**

SCALE: NONE



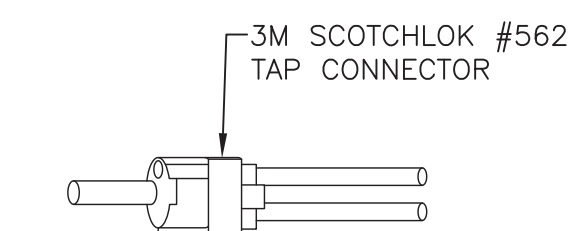
**TYPICAL DETAIL FOR GATE VALVES**

SCALE: NONE



**DETAIL A - TEST BOX**

SEE SPECS.



NOTE: WRAP CONNECTOR AND WIRE ENDS WITH GENERAL PURPOSE TAPE SEALANT TO MAKE THE CONNECTION MOISTURE PROOF (NOT SHOWN).

**DETAIL B  
ELECTRICAL TAP CONNECTOR**



**REVISION**

SYMBOL	DATE:	DESCRIPTION:	BY:

**SANTA FE COUNTY**  
UTILITIES DIVISION 424 NM 599, SANTA FE, NM 87507

PROJECT NAME:  
**HONDO 2  
FIRE SUPPRESSION LINE**

DETAILS 2

APPROVED BY: SM      REVIEWED BY: KM  
DATE: AUGUST, 2023      SHEET: W-502  
DRAWN BY: DJ

LAST MODIFIED: May 29, 2024 - 8:37am  
DWG NAME: W-502-2024  
DWG NUMBER: W-502-2024  
COUNTY: Santa Fe  
PROJECT: Hondo 2 Bulk Water Station/WWS Fire Suppression Line