

**SANTA FE COUNTY
PUBLIC WORKS
INVITATION FOR BID**



SANTA FE COUNTY

IFB No. 2025-0208-PW/DK

INFRASTRUCTURE MANAGEMENT PROGRAM

ROADWAY IMPROVEMENTS

January 2025

SANTA FE COUNTY

Table of Contents

BIDDING DOCUMENTS

Advertisement for Bid..... 3
Bid Instructions.....5
Bid Proposal.....23
Bid Form.....25
Bid Sheets27
Non-Collusion Affidavit of Prime Bidder29
Non-Collusion Affidavit of Subcontractor30
Certificate of Non-Segregated Facilities.....32
Certification of Bidder Regarding Equal Employment Opportunity33
Certification of Subcontractor Regarding Equal Employment Opportunity.....34
Bid Bond.....35
Performance Bond36
Labor and Material Payment Bond38
Subcontractor Listing40

APPENDICES

A. Acknowledgement of Receipt of Invitation to Bid Form.....44
B. Campaign Contribution Disclosure Form45
C. Resident Veterans Preference Certification.....47
D. N.M. Wage Decision.....49
E. Sample Construction Agreement62

**ADVERTISEMENT INVITATION FOR BIDS
INFRASTRUCTURE MANAGEMENT PROGRAM
– ROADWAY IMPROVEMENTS
IFB No. 2025-0208-PW/DK**

The Santa Fe County Public Works Department requests bids for the purpose of procuring a licensed construction company to provide road improvements to various County Roads. The work consists of asphalt paving and overlay, roadway surface restoration (mill & inlay) minor concrete construction, project layout and QC testing to verify conformance to specifications, roadway dimensions, and construction management. Bids may be held for ninety (90) days subject to all action by the County. Santa Fe County reserves the right to reject any and all bids in part or in whole.

A completed bid package must be submitted in a sealed container indicating the bid title and number along with the bidding firm's name and address clearly marked on the outside of the container. **All bids must be received by 2:00 PM on Tuesday, February 18th, 2025, at the Santa Fe County Purchasing Division located at 102 Grant Avenue, Santa Fe, NM 87501.** By submitting a bid for the requested materials and/or services each firm is certifying that their bid is in compliance with the regulations and requirements stated within this IFB.

A NON-MANDATORY highly recommended Pre-Bid Meeting will be held at 10:30 AM on Tuesday, January 28th, 2025, at 424 NM 599 Northside Frontage Rd. building H, Santa Fe, NM 87504-0276.

EQUAL OPPORTUNITY EMPLOYMENT: All qualified bidders will receive consideration of contract(s) without regard to race, color, religion, sex, national origin, ancestry, age, physical and mental handicap, serious mental condition, disability, spousal affiliation, sexual orientation or gender identity.

Information on Invitation for Bid Documents will be available by visiting the Santa Fe County website at <https://www.santafecountynm.gov/finance/purchasing-division/current-bid-solicitations> or by contacting Dani Koussa, Santa Fe County Purchasing, by telephone at (505) 986-6344, email at dkoussa@santafecountynm.gov.

Santa Fe County Public works
Publish: January 19th and 20th, 2025

424 NM 599 Northside Frontage Rd. building H, Santa Fe, NM 87504-0276



BID INSTRUCTIONS

Bids are requested by Santa Fe County for construction services for the Infrastructure Management Program – Roadway Improvements, located at Shady Lane CR-90A, Walnut Drive CR-91D, Walnut Circle & Walnut Loop CR-91E, Southfork CR-44, Paseo Nopal CR-77C, and Bonanza Creek Road CR-45 in Santa Fe, NM, in accordance with NMDOT specifications and other documents prepared by Santa Fe County.

The bids shall be based upon the material descriptions, units, and estimated quantities shown on the attached bid sheets. Final payment will be made upon quantities completed in accordance with the specifications, measured and accepted by the County, paid at the unit prices contained in the bid.

The Contractor shall supply all labor, materials and equipment necessary to complete the work in accordance with the construction plans and specifications. The bid shall include all permits, fees, tie-in fees for all utilities, overhead and profit, and incidental costs in the bid amounts. All applicable taxes **shall not** be included in the bid amounts.

All applicable laws and ordinances and the rules and regulations of all authorities having jurisdiction over the project shall apply to the Contractor and all agreements between the Contractor and the County.

1. LOCATION AND DESCRIPTION OF WORK:

The work to be completed is located at the four roads at the north edge of the County (see below), CR-44 Southfork, CR-77C Paseo Nopal, and CR-45 Bonanza Creek Road (Alternate Bid), all within Santa Fe County, New Mexico. The driving surfaces are currently paved with HMA pavement or chip-seal, in varying terrain and surface/subsurface conditions. The work includes but is not limited to the following:

- a. Asphalt Paving and Overlay
- b. Asphalt Roadway Cold Milling
- c. Curb and Gutter removal and replacement
- d. Unstable Subgrade Repair
- e. Ditch Grading
- f. Pavement Markings
- g. Project Layout and QC Testing to verify conformance to specifications and roadway dimensions
- h. Construction Operations

SCOPE OF WORK

I. Individual Roadway Tasks

A. Base Bid

1. Shady Lane CR-90A, Walnut Drive CR-91-D, Walnut Circle & Walnut Loop CR-91E

- Pavement Surface Restoration (Mill & Inlay 2"): 8,265 'L x 19' W (approx. 17,448SY), per Spec Section 415.1.3, with Section 416 as the basis for HMA paving requirements. Complete with all pre-pave preparation, material removal, Tack Coat, and HMA 2" compacted depth. A 2% side slope (crown) to be constructed regardless of existing condition. Note – Vibratory rollers may be utilized but may be limited to static mode if residents express concerns regarding possible structural damage to homes.
- Clearing and Grubbing: Vegetation within the roadway (curb to curb) removed. Any trees, encroaching limbs, and large shrubs within limits removed and hauled to landfill or green waste site.
- Unstable Subgrade Stabilization: Contractor will coordinate with the County Inspector or Project Manager to identify and record locations with subgrade failure prior to and after cold milling is complete. Repaired areas will be patched with 2" HMA per Bid Item #417000, Miscellaneous Paving (price as patching – no testing required).
- Install Pavement Markings: Shady Lane, Dbl. Yellow at C.L. and Stop Bars (2), Walnut Drive, Circle and Loop, Stop Bars (5).

***Note:** Two-inch mill depth for Shady Lane will get into the basecourse. Plan on minor grading/dress up to smooth out irregularities - wet and roll basecourse shortly before paving. This item is considered incidental to Bid Item #415000; bid accordingly.

2. CR-44 Southfork

- Minor Paving: 2" HMA Overlay- 7,595 'L x 22 'W (varies), ± 18,565 SQ YD's, to include tack coat on existing pavement after surface sweeping. Cold Mill 6' wide tapers, 2" to flush at end joints (to flush pavement transitions). This item will be considered incidental to the paving – no additional payment will apply. Shoulder HMA hinge point to be compacted per Contractor's means and methods. A 2% min. side slope (crown) to be constructed regardless of existing condition.
- Clearing and Grubbing: Vegetation encroaching existing pavement or proposed road section, will be removed and hauled to landfill or green waste site. A few trees may have to be pruned back or removed. The County Project Manager will mark trees needing removal. Light vegetation debris may be disposed of along the right of way.
- Unstable Subgrade Stabilization: Contractor will coordinate with the Project

Manager to identify and repair locations with subgrade failure in advance of paving. Repaired areas will be patched with 2" HMA per Bid Item #417000, Miscellaneous Paving (price as patching – no testing required).

- Install Pavement Markings: Dbl. Yellow at C.L., Sgl. White at both edges, Stop Bars (2).

3. CR-77C Paseo Nopal

- Minor Paving 2" HMA Overlay: 5, 835 'L x ±19' W (approx.12,318 SQ YD's) to include tack coat on existing pavement, after surface sweeping. Width varies from 15' to 20'. Coordinate with Project Manager to identify sections for possible width increase. Cold Mill 6' wide tapers, 2" to flush at end joints (to flush pavement transitions). This item will be considered incidental to the paving – no additional payment will apply. Shoulder HMA hinge point to be compacted per Contractor's means and methods.
- Unstable Subgrade Stabilization: Contractor will coordinate with the Project Manager to identify locations with subgrade failure in advance of paving. Repaired surfaces will be patched with 2" HMA per Bid Item #417000, Miscellaneous Paving (price as patching – no testing required).
- Clearing and Grubbing: Vegetation encroaching existing pavement or proposed road section will be removed and hauled to landfill or green waste site. Light vegetation debris may be disposed of along the right of way.
- Shoulder and Ditch Reconstruction: Borrow ditches will be bladed and redefined where practical. Minimal depth required. Existing ditch drain points to be maintained with positive flow. The basis of payment is per Bid Item #209000 Blading and Reshaping. Excess material may be wasted on-site as approved by the Project Manager or hauled off by contractor. Ditch work shall be suspended in locations where run-off will impact driveway entrances – coordinate with the Project Manager or Construction Inspector.
- Install Pavement Markings: Curve Ahead (2) and Stop Bar (2).

B. ALTERNATE BID:

1. CR-45 Bonanza Creek Road

- Minor Paving 2" HMA Overlay: 5,725 'L x ±23' W (approx.14,631 SQ YD's) to include tack coat on existing pavement, after surface sweeping. Cold Mill 6' wide tapers, 2" to flush at end joints (to flush pavement transitions). This item will be considered incidental to the paving – no additional payment will apply. Shoulder HMA hinge point to be compacted per Contractor's means and methods.
- Unstable Subgrade Stabilization: Contractor will coordinate with the Project Manager to identify locations with subgrade failure in advance of paving. Repaired surfaces will be patched with 2" HMA per Bid Item #417000,

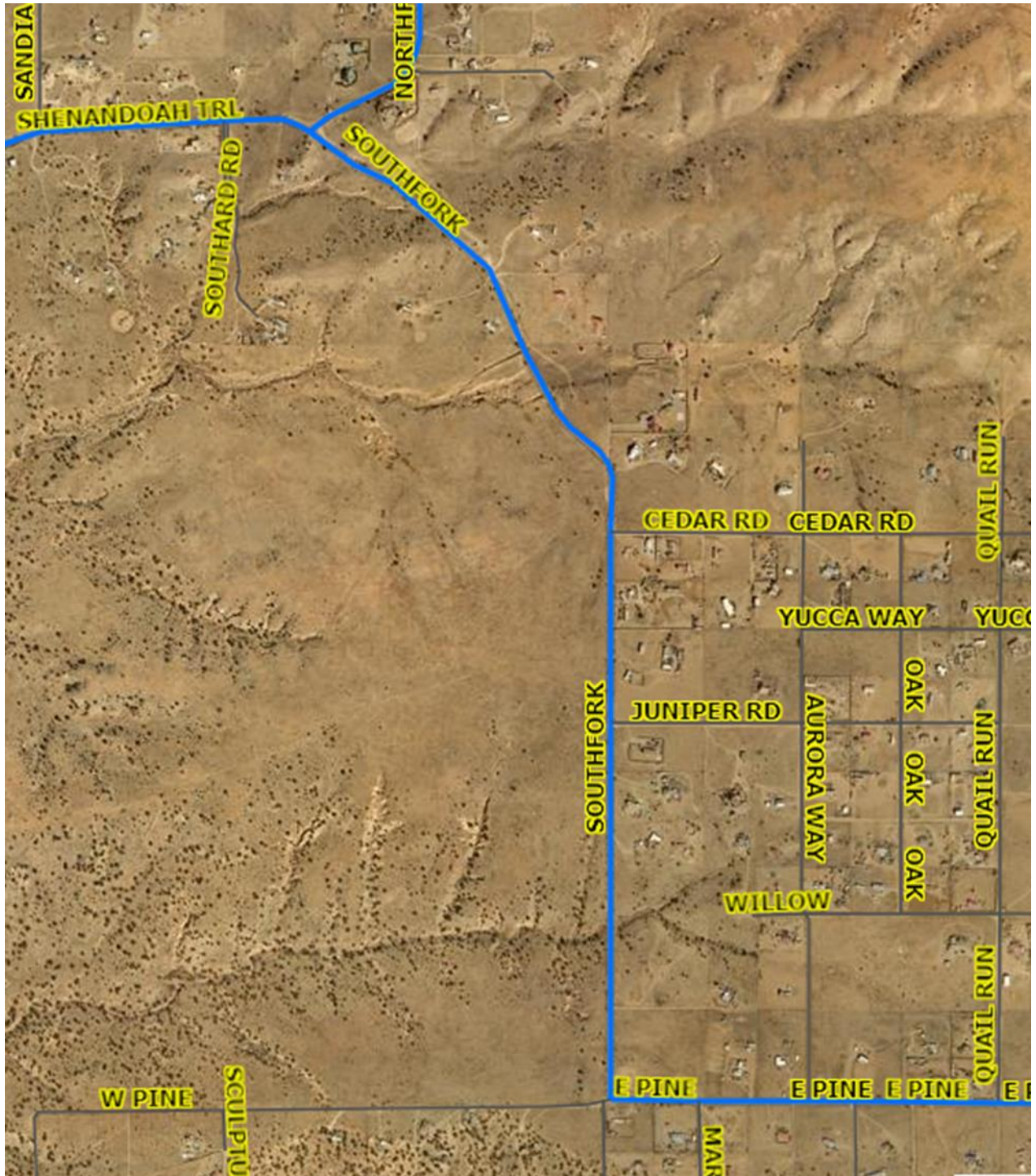
Miscellaneous Paving (price as patching – no testing required).

- Clearing and Grubbing: Vegetation encroaching existing pavement or proposed road section will be removed and hauled to landfill or green waste site. Very light vegetation debris may be disposed of along the right of way.
- Shoulder Edge Repair: Chipseal edges with breakage extending into the roadway beyond the existing white shoulder stripe will be patched with 2" HMA, in advance of paving. Payment shall be per Bid Item #417000, Miscellaneous Paving.
- Install Pavement Markings: Dbl. Yellow at C.L. (match existing pass/no pass zones), Sgl. White at both edges, Stop Bar (1).

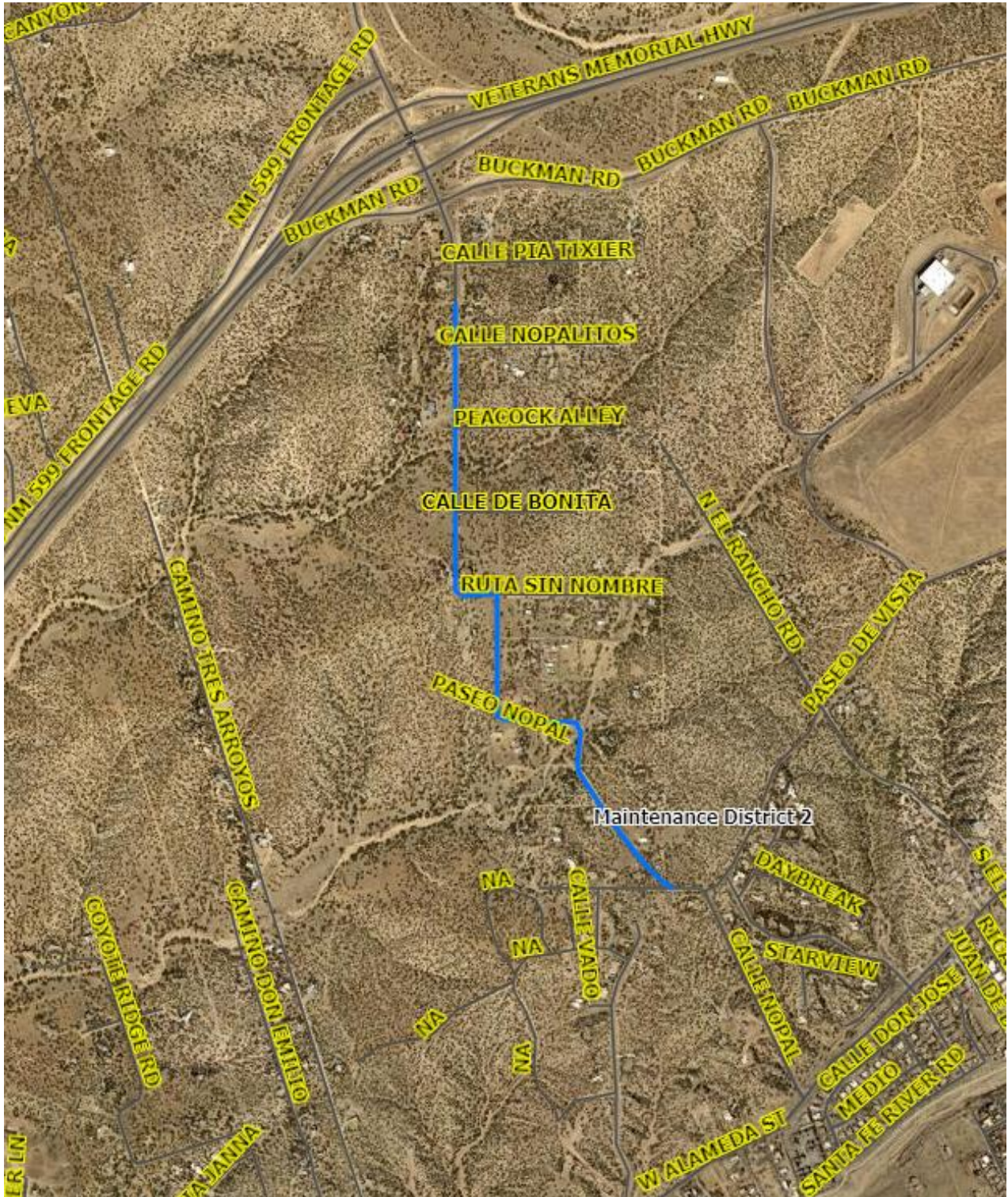
Vicinity Map – Shady Lane, Walnut Drive, Walnut Circle, and Walnut Loop



Vicinity Map – CR-44 Southfork



Vicinity Map – Paseo Nopal



Vicinity Map - CR-45 Bonanza Creek Road



II. Project Goals and Objective

All materials shall comply with, and all work shall be performed according to the 2019 NMDOT-SSHBC specifications and standard designs, as applicable.

A. Roadway Improvement Items:

- a. HMA Asphalt Paving
- b. Asphalt Surface Cold Milling
- c. Subgrade Repair - unsuitable material removal and replacement, including asphalt surface patching.
- d. Curb and Gutter removal and replacement.
- e. Installation of Pavement Markings.
- f. Ditch and Shoulder Grading
- g. Approved Traffic Control plan, implementation, and maintenance.
- h. Conformance to ADA requirements for any locations identified.
- i. Quality Control Plan
 - Provide a comprehensive written QC plan.
 - Implementing a written corrective action plan for any phase (as needed).
 - Materials specification compliance, with approved submittals.
- j. Acceptance Testing
 - Utilization of a licensed, insured, certified, qualified geo-tech testing firm.
 - QC testing will verify conformance to specifications.
 - Unstable Subgrade will be identified by Proof-Rolling with heavy wheeled equipment and verified with the Construction Inspector.

B. Construction Operations:

- a. Develop and submit initial and ongoing construction schedule.
- b. Developing a comprehensive and site-specific safety plan which assures a safe work environment for the public and all participants.
- c. Effective work site management support and public relations. A supervisor must always be present on-site.
- d. Determining means and methods for performing the work.
- e. Verifying adherence to all Labor Compliance per Work Force Solutions or other governing regulations.
- f. Constructing the proposed improvements efficiently and within budget.
- g. Coordinating and reporting on the status of work with Santa Fe County and participating in regular meetings as scheduled by the County P.W. Department.
- h. Managing work to maintain residential access and business operations, efficient traffic flow, and public safety.
- i. Implementation of the quality management and quality control plan including acceptance testing, per NMDOT testing requirements.
- j. Adhering to all federal, state, and local permitting requirements - if applicable.

- k. Implement an efficient materials tracking system with daily quantity reports.
- l. Engagement in contract close-out: Final inspection, punch list item completion.

III. Special Conditions

a. Traffic Control Management:

The Contractor shall submit a Traffic Control Plan (TCP) for cursory review to the Santa Fe County Project Manager, a minimum of two weeks in advance of any activities affecting roadway traffic. The TCP and all traffic control devices shall conform to the latest edition of the Manual for Uniform Traffic Control Devices requirements. The TCP shall be generated by a licensed Professional Engineer to certify that the plan is compliant with all governing regulations and laws. Santa Fe County assumes no liability for contractor failure to implement and maintain provisions within the approved TCP.

b. Project Layout and Surveying:

Any work necessary to reestablish alignment and elevation for the roadways is considered incidental to the work, with No Separate Pay Item. Excavation and embankment for the roadway profile is not anticipated. It is the County's expectation that the contractor set sufficient reference points (offsets) from existing centerlines to maintain existing road alignment (if necessary). The contractor may make slight adjustments to alignment if necessary to construct the proposed cross section widths; County notification and approval required.

- A 2% minimum side slope (crown) will be established for the completed pavement. If an existing roadway does not have a crown, the screed should be adjusted accordingly. Increase, if any in HMA tonnage will be paid for at unit cost.
- Layout for pavement markings is considered incidental to the respective bid item; the County Project Manager will provide installation locations for special markings.
- Basecourse or cold millings shall be placed at residential driveway entrances, as applicable, to create adequate (minimal) tapers. This task shall be considered incidental and should be factored into the paving bid item.
- Transitions to existing pavements will be flush at the joint.

c. The Quality Control Plan, to include QC testing for HMA is considered incidental to the work - No Separate Pay Item will apply. Small quantities of concrete (Class A) are not required to be tested. Concrete submittals shall meet the specification requirements and load tickets shall be provided to inspector. Cores for pavement thickness may be performed by the county. Finish pavement surface tolerances per the applicable NMDOT specification will be performed by the County. Material submittals, mix designs, and vendor information shall be provided to the County Project Manager a minimum of two weeks in advance of operations.

d. Pre-Construction Video and Photographs shall be produced prior to operations. These shall be submitted to the County Project Manager a

minimum of one week prior to activities.

- e. Construction Phasing should be planned so that work at the various locations is completed in consecutive order, not concurrently. This requirement may be waived if the Contractor's schedule will be negatively impacted. The County may opt to modify or delete segments. The Alternate Bid segment shall be constructed last, unless approved by the County Project Manager.
- f. Payment: Except where bid items are specifically provided for in the proposal, payment to the Contractor to accommodate the requirements specified herein shall be considered subsidiary to the various items of work under this contract, and no direct payment will be made.

- 2. **TIME AND PLACE OF RECEIVING AND OPENING BIDS:** This information will be found in the "Advertisement of Bid" form attached hereto. A bid received after the specified time will not be considered and will be returned to the bidder unopened.
- 3. **SPECIFICATIONS:** The construction of this project will be in accordance with NMDOT specifications and other documents prepared for this project, except as otherwise specified herein or in the contract.
- 4. **CONTRACT TIME:** The number of days for the completion of work (the contract time) from the Notice to Proceed is sixty (60) days. The number of days for the completion of work is weather working calendar days, where "calendar days" are defined as consecutive business days.
- 5. **COPIES OF BIDDING DOCUMENTS:** The Invitation for Bid Documents will be available by visiting the Santa Fe County website at <https://www.santafecountynm.gov/finance/purchasing-division/current-bid-solicitations> or by contacting Dani Koussa, Procurement Specialist Senior, Santa Fe County Purchasing, by telephone at (505)986-6344, email at dkoussa@santafecountynm.gov.

Bidders shall use complete sets of Bidding Documents in preparing bids; neither the owner nor engineer assumes responsibility for errors or misinterpretations resulting from the use of incomplete sets of Bidding Documents.

- 6. **A NON-MANDATORY highly recommended Pre-Bid Meeting will be held at 10:30 AM on Tuesday, January 28th, 2025, at 424 NM 599 Northside Frontage Rd. building H, Santa Fe, NM 87504-0276.**
- 7. **BIDDER'S REPRESENTATION:** By submitting a bid the bidder represents that: a) the bidder has read and understands the Bid Documents and Contract Documents; b) the bid is made in compliance with the Bid Documents and Contract Documents; c) The bidder has become familiar with local conditions under which the Work is to be performed, and has correlated the bidder's personal observations with the requirements of the proposed Contract Documents; d) the bidder has familiarized itself with federal, state and local laws,

ordinances, rules, and regulations affecting performance of the Work; and e) the bid is based upon the materials, equipment and systems required by the Bid Documents without exception; and f) the County shall rely on these representations.

- 8. INTERPRETATIONS/ADDENDA:** All questions about the meaning or intent of the contract documents shall be submitted to the Procurement Specialist in writing.

Replies will be issued by written addenda mailed or delivered to all parties recorded by the Procurement Specialist, as having received the bidding documents at least seven (7) calendar days before the scheduled bid opening date. Questions received less than seven (7) calendar days prior to the date for opening of bids will not be answered. Only questions answered by formal written addenda will be binding. Oral and other interpretations or clarifications will be without legal effect. Written questions or inquiries in relation to the Invitation for Bid will be directed to:

Dani Koussa, Procurement Specialist Senior
Santa Fe County Purchasing Division
102 Grant Avenue
Santa Fe, NM 87501
Ph. (505) 986-6344
Fax (505) 989-3243
Email –dkoussa@santafecountynm.gov

Addenda will be transmitted to all bidders that are listed on the Bid Holder’s List at the printer(s) who have received a complete set of Bid Documents.

Copies of addenda will be made available for inspection wherever Bid Documents are on file for that purpose. Each addendum shall be part of the contract documents as specified in the written contract, attached to these specifications.

Addenda will be issued no later than five (5) working days prior to the date for receipt of bids except an addendum withdrawing the request for bids or one which includes postponement of the date for receipt of bids.

Each bidder shall ascertain prior to submitting a bid that the bidder has received all addenda and the bidder shall acknowledge receipt in the bid.

- 9. RESIDENT PREFERENCE:** If a bidder wishes to be given preference in this procurement, it is required to submit its certificate or certificate number issued by the State Purchasing Agent with the bid prior to the bid submittal time and date deadline. Preference will not be given to a bidder who does not submit its certificate or certificate number that can be verified with the State Purchasing Office. The certificate must be under the bidder’s business name as represented in its bid. The bidder’s certificate must indicate whether the bidder is certified as a resident business. Application of preference by the County shall be provided as described at Section 13-1-21 (A)-(L) and Section 13- 1-21.2 NMSA 1978, of State Procurement Code.

- 10. SUBCONTRACTORS, SUPPLIERS AND OTHERS:** The contractor shall be required to fully comply with the Subcontractors Fair Practices Act, NMSA 1978, 13-4-31 to 13-4-42.
- A. The contractor, in the bid documents, must identify in writing to the County those portions of the work that it proposes to subcontract and after the Notice of Award, may only subcontract other portions of the work with the County's written consent.
 - B. Any subcontractor who will be providing more than \$5,000 or one-half of one percent of the architect's or engineer's estimate of the total project cost (not including alternates) whichever is greater for any service, must be listed on the Subcontractor Listing form.
 - C. A subcontractor who submits a bid valued at more than sixty thousand dollars (\$60,000) for a County project is subject to the Public Works Minimum Wage Act (13-4-10 NMSA 1978). The registration number shall be provided in the bid submitted by the Contractor in the space provided for subcontracts with work proposed. After the bid opening, the registration numbers will be verified by the County and the bid will be determined to be non-responsive and disqualified if the registration number(s) appear to be non-valid and the subcontractor does not provide proof of the required registration for itself or its subcontractors for work proposed over the sixty thousand dollars (60,000).
 - D. The Contractor will not be required to employ any other subcontractor, other person or organization against whom he has reasonable objection.
- 11. SUBSTITUTIONS:** The materials, products, and equipment described in the Bid Documents establish a standard of required function, dimension, appearance and quality to be met by any proposed substitution. **No substitution will be considered prior to receipt of bids.**
- 12. WAGE RATES/REGISTRATION WITH THE LABOR AND INDUSTRIAL DIVISION OF THE LABOR DEPARTMENT:** The contractor shall be required to fully comply with the Public Works Minimum Wage Act, NMSA 1978, 13-4-11 thru 13-4-17. If the minimum wage rate determination for the project is not included in the initial Bid Documents, it will be furnished in an addendum.

A contractor or subcontractors who submit a bid valued at more than sixty thousand dollars (\$60,000) for a public works project that is subject to the Public Works Minimum Wage Act must be registered with the New Mexico Workforce Solutions at the time of the bid opening. The registration number shall be provided in the bid submitted by the contractor in the space provided for subcontracts with work proposed. After the bid opening, the registration numbers will be verified by the County and the bid will be determined to be non-responsive and disqualified if the registration numbers are *“inactive”* and the contractor does not provide proof of the required registration for itself or its subcontractors for work proposed over sixty thousand dollars (\$60,000).

For a public works contract whose value is \$60,000 or more, the NM Public Works Minimum Wage Act, 13-4-11 NMSA 1978, also requires all tiers of subcontractors to submit certified weekly payroll records to the general contractor and the County biweekly. If this provision applies, the contractor shall, and shall require all tiers of subcontractors,

to submit certified weekly payroll records to the contractor and the County's Project Manager for this project.

13. BID FORM:

- A. The bid forms are included in the bidding documents; additional copies may be obtained from the Santa Fe County Purchasing Division.
- B. Bid forms must be completed in either ink or typewritten. The bid price of each item on the form must be stated in numerals and written words; in case of an error in extensions in the unit price schedule, the unit price shown in written words shall govern.
- C. Bids by corporations must be executed in the corporate name by the president or a vice president (or other corporate officer accompanied by evidence of authority to sign) and the corporate seal shall be affixed and attested by the secretary or an assistant secretary. The corporate address and state of incorporation shall be shown below the signature.
- D. Bids by partnerships must be executed in the partnership name and signed by a partner, their title must appear under their signature and the official address of the partnership must be shown below the signature.
- E. All names must be typed or printed below the signature.
- F. The bid shall contain an acknowledgment of receipt of all addenda (the numbers of which shall be filled in on the bid form).

- 14. BID SECURITY:** Each individual bid shall be accompanied by bid security equal to 5% of the amount of the bid. Such bid security shall be in the form of a certified or cashier's check made payable to the County or a surety bond issued by a surety authorized to conduct business in the State of New Mexico and who is approved in federal circular 570 as published by the U.S. Treasury Department.

By submitting the bid and providing the bid security, the bidder pledges to enter into a binding contract with the County and will furnish bonds covering the faithful performance of the contract and payment of all obligations arising hereunder.

The County will have the right to retain the bid security of bidders to whom an award is being considered until either the contract has been executed and bonds, if required, have been furnished or the specified time has elapsed so that bids may be withdrawn or all bids have been rejected.

- 15. POWER OF ATTORNEY:** Attorneys in fact who sign bonds must attach certified effective copies of their Power of Attorney to all bonds.

- 16. QUALIFICATION OF BIDS:** All contractors and subcontractors must have a valid New Mexico license appropriate to the work herein specified at the time the bid is submitted.

- 17. SUBMISSION OF BIDS:** Bids shall be submitted at the time and place indicated in the "Advertisement for Bids" on page 3 of this IFB and shall be enclosed in an opaque sealed

envelope, marked with the project title, name and address of the bidder, N.M. License Number, and accompanied by the list of subcontractors and other required documents. All blanks must be filled in. Conditional bids will not be considered. The envelope shall be addressed to:

Dani Koussa, Procurement Specialist Senior
Santa Fe County Purchasing Division
102 Grant Avenue
Santa Fe, NM 87501

- 18. MODIFICATION AND WITHDRAWAL OF BIDS:** A bid may not be modified, withdrawn or canceled by the bidder following the time and date designated for the receipt of bids, and each bidder so agrees to these conditions by submitting a bid.

Prior to the time and date designated for receipt of bids, a bid submitted may be modified or withdrawn by notice to the County at the address designated for receipt of bids. Such notice shall be in writing and signed by the bidder.

Upon receipt such written confirmation shall be date and time stamped by the County on or before the date and time set for receipt of bids. A modification of a bid shall be worded as not to reveal the amount of the original bid.

- 19. GROSS RECEIPTS TAXES:** The amount of the bid shall exclude applicable New Mexico Gross Receipts Taxes or applicable local option taxes. The applicable gross receipts tax or applicable local option taxes shall be computed and shown as a separate amount on each request for payment made under the contract.

- 20. CONSIDERATION OF BIDS:** Bids received on time will be opened publicly and will be read aloud, and an abstract of the amounts of the base bids and alternates or bid items, if any, will be made available to the bidders. Each bid shall be open to public inspection.

- 21. BID OPENING PROCEDURE:** The person or persons opening the bids shall verify that the requirements of the Instruction to Bidders have been fulfilled, and shall read aloud the name of each apparently responsive bidder and the bid amount(s). If any requirements have not been met, the bid shall be deemed non-responsive and disqualified. Each bid shall be reviewed for the following:

- A. Bid Proposal – Include name of bidder, type of organization, contractor’s license number and DOL registration number and all required signatures.
- B. Bid Form- Include acknowledgement of all addenda, if applicable, bidder’s name, title, address, telephone number, contractor’s license number and type, United States Treasury number, resident preference certificate, if applicable, and all required signatures.
- C. Bid Sheet-Include best price offered, excluding GRT.
- D. Non-Collusion Affidavit for Prime Bidder Form-Include all required notarized signatures.
- E. Certification of Non-Segregated Facilities Form-Include all required notarized signatures.

- F. Certification of Bidder Regarding Equal Employment Opportunity Form-Include all required signatures.
- G. Bid Bond-Include all required notarized signatures.
- H. Bid Security- Shall be in the form of a certified or cashier's check made payable to the County or a surety bond issued by a surety.
- I. Subcontractor's Listing Form-List of all subcontractors performing work over \$5,000.00, include name, address, telephone number, license number and **active** NM Department of Workforce Solutions Registration Number.
- J. Campaign Contribution Disclosure Form-Include all required signatures.
- K. Valid certificate of resident business or resident contractor.

IF ANY OF THESE REQUIREMENTS HAVE NOT BEEN MET, THE BID MAY BE DISQUALIFIED AND CONSIDERED NON-RESPONSIVE.

22. BIDS TO REMAIN OPEN: All bids shall remain open for ninety (90) days after the day of the bid opening.

23. AWARD OF CONTRACT:

- A. The County reserves the right to reject any and all bids and waive any and all informalities or technicalities and the right to disregard all nonconforming or conditional bids or counter proposals.
- B. If a contract is to be awarded, it will be awarded to the lowest responsible bidder submitting a bid that is either: (i) the lowest base bid; or (ii) the lowest bid including the base bid and bid alternate(s); or (iii) the lowest bid including the base bid and any combination of bid alternates.
- C. If the lowest responsible bidder has otherwise qualified, the lowest bidder may negotiate with the County for a lower bid if the lowest bid is within **ten percent** over budgeted project funds in order to prevent all bids from being rejected. No change in the original scope and/or terms and conditions will be allowed. Negotiations may be permitted with product, materials, and equipment alternatives as determined to be in the best interest of the County.
- D. Alternates may be accepted and awarded in any manner or order based on available budget. The County reserves the right not to award any particular alternate.
- E. **The awarded contractor must register all active subcontractors on the State of New Mexico Workforce Solutions website upon approval of Notice of Award entered by Santa Fe County.**

24. LIQUIDATED DAMAGES: Liquidated damages in the amount of five hundred dollars (\$500.00) per each calendar day shall be assessed after the completion date (as adjusted by change orders) until the issuance of a Certificate of Substantial Completion for the entire project.

25. PREFERENCES IN EQUIPMENT AND MATERIAL: In the construction of this project, the County has no preference for any process, type of equipment, or kind of material, but will consider all processes, types of equipment or kinds of material offered on a usual competitive basis if they are in fact equal to that specified and will accomplish

the purpose intended. The County reserves the right to be the sole judge as to whether or not a different process, type of equipment or kind of material offered is in fact equal to that specified.

26. **LICENSE OR ROYALTY FEES:** Licenses and/or royalty fees for products or for processes must be paid for directly by the contractor.
27. **PERMITS:** It is the responsibility of the contractor and each subcontractor to obtain permits and inspections required by the County and/or the State of New Mexico or any other entity that may have jurisdiction over the construction.
28. **COLLUSION:** No bidder shall be interested in more than one bid. Collusion among bidders or the submission of more than one bid under different names by any firms or individual shall be cause for rejection of all bids in question without consideration.
29. **QUANTITIES:** The quantities set forth in the bid proposal are estimated quantities on which bids will be compared and which will be the basis for award of contract. Payment will be made for work actually performed.
30. **PROTEST PROCEDURE:** Any bidder who is aggrieved in connection with procurement may protest to the County Purchasing Manager as set forth in Resolution No. 2006-60 by the Board of County Commissioners. A copy of Resolution No. 2006-60 is available upon request. The protest must be in writing and be submitted within fifteen (15) days after the facts or occurrences. The complete procedures and requirements regarding protests and resolution of protests are available from the Santa Fe County Purchasing Division upon request. The protest must be delivered to the Santa Fe County Purchasing Division:

Santa Fe County Purchasing Division
P.O. Box 276
Santa Fe, New Mexico 87504

Protest will not be accepted by facsimile or other electronic means. Protest received after the deadline will not be accepted.

31. **CONTRACTOR'S QUALIFICATION STATEMENT:** A bidder to whom award of a contract is under consideration shall submit, upon request, information and data to prove that its financial resources, production or service facilities, personnel, and service reputation and experience are adequate to make satisfactory delivery of the services, construction, or items of personal property described in the Bidding Documents.
32. **BOND REQUIREMENTS – PERFORMANCE BOND AND PAYMENT BOND:** If awarded the contract, a bidder shall furnish bonds covering the faithful performance of the contract and payment of all obligations arising thereunder. The amount of the bonds, performance and payment, shall each be equal to 100% of the contract sum. Bonds shall be issued by a surety authorized to conduct business in the State of New Mexico and who is approved in federal circular 570 as published by the U.S. Treasury Department.

The cost of the bonds shall be included in the bid.

- 33. TIME OF DELIVERY AND FORM OF BONDS:** The bidder shall deliver the required bonds to the County no later than seven (7) days following the date of execution of the contract. If the Work is to be commenced prior thereto in response to a letter of intent, the bidder shall, prior to commencement of the Work, submit evidence satisfactory to the County that such bonds will be furnished and delivered in accordance with this section.

The bidder shall require the attorney-in-fact who executes the required bonds on behalf of the surety to affix thereto a certified and current copy of the power of attorney.

- 34. WARRANTY:** The contractor shall furnish a written warranty of workmanship to the Procurement Manager for a period of one (1) year following the completion date in addition to all other warranties required by the Contract Documents.
- 35. NOTICE OF AWARD:** A written Notice of Award shall be issued by the County after review and approval of the bid and related documents.
- 36. IDENTICAL BIDS:** If two or more identical low bids are received, the County will apply the process described at Section 13.1.110 NMSA 1978, of the State Procurement Code.
- 37. CANCELLATION OF AWARD:** When in the best interest of the public, the County may cancel the award of any contract at any time before the execution of said contract by all parties without any liability against the County.
- 38. NOTICE TO PROCEED:** The County will issue a written Notice to Proceed and a purchase order to the contractor stipulating the date from which contract time will be charged and the date contract time is to expire.
- 39. FAILURE TO EXECUTE CONTRACT:** Failure to return the signed contract with acceptable contract bonds and certificate of insurance within ten (10) calendar days after the date of the Notice of Award shall be just cause for the cancellation of the award. The award may then be made to the next lowest responsible bidder, or the work may be re-advertised and constructed under contract or otherwise, as the owner may decide.
- 40. INSURANCE REQUIREMENTS:** At a minimum upon execution of the Agreement between the County and the contractor, the contractor shall furnish to the County, Certificates of Insurance naming Santa Fe County as an additional insured for the insurance coverage as specified in the sample contract and the County's supplementary conditions attached hereto.
- 41. CLARIFICATION OF NON-COLLUSION AFFIDAVIT OF SUBCONTRACTOR, AND CERTIFICATION OF SUBCONTRACTOR REGARDING EQUAL EMPLOYMENT OPPORTUNITY:** The general contractor is not required to present completed "Non-Collusion Affidavit of Subcontractor" and "Certification of Subcontractor Regarding Equal Employment Opportunity" forms from their subcontractors at the time of bid submittal; however, once the contract is awarded,

the general contractor is responsible for providing these forms along with the bonds and certificate of insurance.

42. **SUBCONTRACTOR PERFORMANCE AND PAYMENT BOND:** A subcontractor whose work to be performed on a public works building project is one hundred twenty-five thousand dollars (\$125,000) or more shall submit a performance and payment bond in the amount of the work they are to perform on the project. These bonds will be submitted within the stated (10) calendar days after the date of the Notice to Award.
43. **OPERATIONS AND MAINTENANCE MANUALS:** At the completion of the project but prior to the Substantial Completion certificate approved by the engineer, the contractor shall submit to the Project Manager two (2) copies of a three ring binder with all maintenance and operations instructions for all systems and items within this phase of construction, if applicable.
44. **NOTICE:** The Procurement Code, Sections 13-1-28 through 13-1-199 NMSA 1978, imposes civil and misdemeanor criminal penalties for its violation. In addition, the New Mexico criminal statutes impose felony penalties for bribes, gratuities, and kickbacks.
45. **SUFFICIENT APPROPRIATION:** Any contract awarded as a result of this IFB process may be terminated if sufficient appropriations or authorizations do not exist. Such termination will be effected by sending written notice to the contractor. The County's decision as to whether sufficient appropriations and authorizations are available will be accepted by the contractor as final.
46. **NUMBER OF BIDS ACCEPTED:** Bidders shall submit only one (1) bid in response to this IFB.
47. **LIVING WAGE:** Contractor shall comply with the requirements of the Santa Fe County Ordinance 2014-1 (Establishing a Living Wage).
48. **DOUBLE SIDED DOCUMENTS:** All submitted bids/proposal documents shall be double-sided, pursuant to Santa Fe County Resolution 2013-7, Adopting Sustainable Resource Management Principles, Section 2. A. Waste Reduction and Reuse..."all documents are to be double-sided, including those that are generated by outside entities using County funds and by consultants and contractors doing business with the County".

BID PROPOSAL
IFB No. 2025-0208-PW/DK
Infrastructure Management Program – Roadway Improvements

To Santa Fe County, State of New Mexico, Owner:

In compliance with the Information for Bidders and in strict conformance with the Contract Documents, _____, hereinafter called the Bidder, organized and existing under the laws of the State of New Mexico as a _____ (type of business or legal entity), hereby proposes to perform all the WORK required for the construction services for the Infrastructure Management Program – Roadway Improvements located in Santa Fe County, New Mexico.

The undersigned declares that it is the only person or parties interested in the proposal as principals are those named herein; that the proposal is made without collusion with any person, firm or corporation; that it has carefully examined the specifications, including special provisions, if any, and that it has made a personal examination of the site of the work, that it is to furnish all the necessary machinery, tools, apparatus and other means of construction and do all the work and furnish all the materials specified in the manner and the time prescribed; that it understands that the quantities are approximate only and subject to increase or decrease, and that it is willing to perform any increased or decreased quantities of work at unit price bid.

The undersigned hereby agrees to execute and deliver the Construction Agreement within ten (10) days, or such further time as may be allowed in writing by Santa Fe County after receiving notification of the acceptance of this proposal, and it is hereby mutually understood and agreed that in case we do not, Santa Fe County may proceed to award the contract to others.

We hereby agree to commence the work within fifteen (15) days, or such further time as may be allowed in writing by Santa Fe County after notification to proceed.

The undersigned proposes to guarantee all work performed under these plans, specifications and contract for one year after acceptance by the County and repair and maintain same until the date of acceptance by Santa Fe County.

Signature-Title

(Corporate Seal)

Corporate Name

Address

City, State, Zip Code

Names of individual members of firms or names and titles of all officers of Corporation.

Corporation organized under the Laws of the State of

New Mexico Contractor's License No.

NM Department of Workforce Solutions,
Public Works Labor Enforcement Fund
Registration Number:

**SANTA FE COUNTY
BID FORM**

FROM: _____

_____ hereinafter called "Bidder".

TO: Santa Fe County
102 Grant Avenue
Santa Fe, New Mexico 87501

hereinafter called "CONTRACTING AGENCY",

BID FOR: **IFB No. 2025-0208-PW/DK**
PROJECT: **Infrastructure Management Program – Roadway Improvements**

Purchasing Division:

The bidder has familiarized itself with the existing conditions on the project area affecting the cost of the work and with the contract documents which includes:

- A. Advertisement for Bids
- B. Instructions for Bidders
- C. Bid Proposal and other required bid forms as listed herein
- D. Form of Agreement
- E. Form of Performance Bond
- F. Form of Labor and Material Payment Bond
- G. Technical Specifications
- H. All information provided in the Project Manual and Drawings

Therefore, the Bidder hereby proposes to furnish all supervision, technical personnel, labor, materials, tools appurtenances, equipment, and services (including all utility and transportation services) required to complete the construction services for the Infrastructure Management Program – Roadway Improvements in accordance with the above listed documents.

(Amounts are to be shown in both words and figures. In case of discrepancy, the amount shown in words will govern). Bidder has provided unit prices for the scope of work.

In submitting this bid, the Bidder understands that the right is reserved by Santa Fe County to reject any irregular or all bids, waive any technicalities in the bids, and accept the bid deemed to be in the best interest of the public and that Santa Fe County intends to award one contract (if at all) for the items bid. If written notice of the acceptance of this bid is mailed, telegraphed or otherwise delivered to the undersigned within ninety (90) days after the opening thereof or at any time thereafter before this bid is withdrawn, the undersigned agrees to execute and deliver the agreement in the prescribed form within ten (10) days after the agreement is presented to it for signature.

All Addenda pertaining to this Project shall be acknowledged by the Bidder in the spaces provided below:

Addendum No. Date	Acknowledged by Bidder or Its Authorized Representative	Date Acknowledged
_____	_____	_____
_____	_____	_____
_____	_____	_____
_____	_____	_____

Failure to acknowledge receipt, as provided above, may be considered sufficient grounds for disqualification of the bidder and rejection of his proposal. It shall be the bidder's responsibility to become fully advised of all Addenda prior to submitting his bid.

The Bidder agrees to commence work under this Contract within fifteen (15) days after, a date to be specified in a written "Notice to Proceed" from Santa Fe County or its authorized agents. Bidder further agrees to pay liquidated damages as provided in the Contract Documents.

This Bid Proposal contains the following:

- A. Bid Proposal
- B. Bid Form
- C. Bid Sheet
- D. Non-Collusion Affidavit for Prime Bidder
- E. Certification of Non-Segregated Facilities
- F. Certification of Bidder Regarding Equal Employment Opportunity
- G. Bid Bond
- H. Subcontractors Listing (as included in this packet)
- I. Campaign Contribution Disclosure Form
- J. Preference Certificate(s)

Failure to include any of the above listed documents in the bid submittal may be considered sufficient grounds for disqualification of the bidder and rejection of its bid.

Respectfully submitted:

Name of Bidder:

Official Address:

By: _____
(Signature)

Title: _____

Date: _____

Telephone No.: _____

Email: _____

*New Mexico Contractor's License Number and Types: _____

United States Treasury Number: _____

Resident Preference Certificate Number: _____

BID SHEETS
Infrastructure Management Program – Roadway Improvements

ROADS: SHADY LANE, WALNUT DRIVE, WALNUT CIRCLE, WALNUT LOOP PASEO NOPAL, AND SOUTHFORK

BASE BID FORM

ITEM#	DESCRIPTION	UNIT	UNIT PRICE	TOTAL QTY	TOTAL
201000	CLEARING AND GRUBBING	LS		1.00	
209000	BLADING AND RESHAPING (Ditch Grading, Paseo Nopal Only)	MILE		1.00	
203211	UNSTABLE SUBGRADE STABILIZATION	SY		250.00	
407000	TACK COAT	TON		34.00	
415000	PAVEMENT SURFACE RESTORATION (MILL & INLAY)	SY		17,500.00	
416104	MINOR PAVING - HMA SP IV (COMPLETE)	TON		3,480.00	
417000	MISCELLANEOUS PAVING	SY		300.00	
609478	CURB AND GUTTER, TYPE D 6" X 18"	LF		30.00	
618000	TRAFFIC CONTROL MANAGEMENT	LS		1.00	
621000	MOBILIZATION	LS		1.00	
702810	TRAFFIC CONTROL DEVICES FOR CONSTRUCTION	LS		1.00	
704000	RETROREFLECTORIZED PAINTED MARKINGS 4" (YELLOW)	LF		19,840.00	
704706	HOT THERMOPLASTIC PAVEMENT MARKINGS 12" (WHITE STOP BAR)	LF		115.00	
704722	HOT THERMOPLASTIC PAVEMENT MARKINGS WORD (CURVE)	EACH		2.00	
704722	HOT THERMOPLASTIC PAVEMENT MARKINGS WORD (AHEAD)	EACH		2.00	
				TOTAL Exclusive of NM GRT	

ROAD: BONANZA CREEK ROAD

ALTERNATE 1 BID FORM

ITEM#	DESCRIPTION	UNIT	UNIT PRICE	TOTAL QTY	TOTAL
201000	CLEARING AND GRUBBING	LS		1.00	
203211	UNSTABLE SUBGRADE STABILIZATION	SY		150.00	
407000	TACK COAT	TON		10.00	
416104	MINOR PAVING - HMA SP IV (COMPLETE)	TON		1,650.00	
417000	MISCELLANEOUS PAVING	SY		175.00	
618000	TRAFFIC CONTROL MANAGEMENT	LS		1.00	
621000	MOBILIZATION	LS		1.00	
702810	TRAFFC CONTROL DEVICES FOR CONSTRUCTION	LS		1.00	
704000	RETROREFLECTORIZED PAINTED MARKINGS 4" (YELLOW)	LF		11,450.00	
704000	RETROREFLECTORIZED PAINTED MARKINGS 4" (WHITE)	LF		11,450.00	
704706	HOT THERMOPLASTIC PAVEMENT MARKINGS 12" (WHITE STOP BAR)	LF		12.00	
				TOTAL <i>Exclusive of NM GRT</i>	

	AMOUNT WRITTEN IN WORDS
TOTAL OF BASE BID	
TOTAL OF ALT. 1	
TOTAL OF BASE BID AND ALT. 1	

ALL BID ITEMS MUST BE EXCLUSIVE OF NMGRT

NON-COLLUSION AFFIDAVIT OF PRIME BIDDER

STATE OF NEW MEXICO

COUNTY OF _____

_____ being first duly sworn, deposes and says that:

(1) They are the _____ of _____ the

Bidder that has submitted the attached Bid Proposal;

(2) They are fully informed respecting the preparation and contents of the attached Bid Proposal and of all pertinent circumstances respecting such bid;

(3) Such bid is genuine and is not a collusive or sham bid;

(4) Neither the said bidder nor any of its officers, partners, owners, agents, representatives, employees or parties in interest, including this affiant, has in any way colluded, conspired, connived or agreed, directly or indirectly with any other bidder, firm or person to submit a collusive or sham bid in connection with the contract for which the attached bid has been submitted or to refrain from bidding in connection with such contract, or has in any manner, directly or indirectly, sought by agreement or collusion or communications or conference with any other bidder, or to secure through any collusion, conspiracy, connivance or unlawful agreement any advantage against the Contracting Agency or any person interested in the proposed contract; and

(5) The price or prices quoted in the attached bid are fair and proper and are not tainted by any collusion, conspiracy, connivance or unlawful agreement on the part of the bidder or any of its agents, representatives, owners, employees, or parties in interest, including this affiant.

(SIGNED) _____

TITLE _____

SUBSCRIBED AND SWORN to before me this ____ day of _____ 2025.

NOTARY PUBLIC

My Commission Expires _____

NON-COLLUSION AFFIDAVIT OF SUBCONTRACTOR

STATE OF NEW MEXICO

COUNTY OF _____

_____ being first duly sworn, deposes and says that:

(1) It is the _____ of _____, hereinafter referred to as the "Subcontractor".

(2) It is fully informed respecting the preparation and contents of the Subcontractor's proposal submitted by the Subcontractor to _____, the Contractor, for certain work in connection with the _____ contract pertaining to the _____ project in _____.

(3) Such Subcontractors proposal is genuine and is not a collusive or sham proposal.

(4) Neither the Subcontractor nor any of its officers, partners, owners, agents, representatives, employees or parties in interest, including this affiant, has in any way colluded, conspired, connived or agreed, directly or indirectly with any other bidder, firm or person to submit a collusive or sham bid in connection with the contract for which the attached bid has been submitted or to refrain from bidding in connection with such contract, or has in any manner, directly or indirectly, sought by agreement or collusion or communications or conference with any other bidder, or to secure through any collusion, conspiracy, connivance or unlawful agreement any advantage against the Contracting Agency or any person interested in the proposed contract; and

(5) The price or prices quoted in the Subcontractor's proposal are fair and proper and are not tainted by any collusion, conspiracy, connivance or unlawful agreement on the part of the bidder or any of its agents, representatives, owners, employees, or parties in interest, including this affiant.

(SIGNED) _____

TITLE _____

SUBSCRIBED AND SWORN to before me this _____ day of _____ 2025.

Notary Public

My Commission Expires: _____

SUBCONTRACTS

A. The contractor shall not execute an agreement with any subcontractor or permit any subcontractor to perform any work included in this contract until it has submitted a Non-Collusion Affidavit from the subcontractor, is substantially the form shown below, and has received written approval of such subcontractor from Santa Fe County.

B. No proposed subcontractor shall be disapproved by Santa Fe County except for cause.

- C. The contractor shall be as fully responsible to Santa Fe County for the acts and omissions of its subcontractors and of persons either directly or indirectly employed by them, as it is for the acts and omissions of persons directly employed by them.
- D. The contractor shall cause appropriate provision to be inserted in all subcontracts relative to the work to require compliance by each subcontractor with the applicable provisions of the contract for the improvements embraced.
- E. Nothing contained in the contract shall create any contractual relation between any subcontractor and Santa Fe County.

CERTIFICATION OF NON-SEGREGATED FACILITIES

(Applicable to construction contracts and related subcontracts exceeding \$10,000, which are not exempt from the Equal Opportunity Clause).

The construction contractor certifies that it does not maintain or provide for its employees any segregated facility at any of its establishments, and that it does not permit its employees to perform their services at any location, under its control, where segregated facilities are maintained. The construction contractor certifies further that it will not maintain or provide for its employees any segregated facilities at any of its establishments, and that it will not permit its employees to perform their services at any location, under its control, where segregated facilities are maintained. The construction contractor agrees that a breach of this certification is a violation of the Equal Opportunity Clause in this contract. As used in this certification, the term "segregated facilities" means any waiting room, work areas, rest rooms and wash rooms, restaurants and other eating areas, time clock, locker rooms and other storage or dressing areas, parking lots, drinking foundations, recreating or entertainment areas, transportation, and housing facilities provided for employees which are segregated by explicit directive or are in fact segregated on the basis of race, creed, color, or national origin, because of habit, local custom, or otherwise. The construction contractor agrees that (except where it has obtained identical certifications from proposed subcontractors for specific time periods) it will obtain identical certifications from proposed SUBCONTRACTORS prior to the award of subcontracts exceeding \$10,000 which are not exempt from the provisions of the Equal Opportunity Clause and that it will retain such certifications in its files.

SIGNED: _____

TITLE: _____

SUBSCRIBED AND SWORN to before me this ____ day of _____, 2025.

NOTARY PUBLIC

My Commission Expires: _____

**CERTIFICATION OF BIDDER REGARDING
EQUAL EMPLOYMENT OPPORTUNITY**

INSTRUCTIONS

This certification is required pursuant to Executive Order 11246 (30 F. R. 12319-25). The implementing rules and regulations provide that any bidder or prospective contractor, or any of their proposed subcontractors, shall state as an initial part of the bid or negotiations of the contract or subcontract whether it has participated in any previous contract or subcontract subject to the equal opportunity clause; and, if so, whether it has filed all compliance reports due under applicable instructions.

Where the certification indicates that the bidder has not filed a compliance report due under applicable instructions, such bidder shall be required to submit a compliance report within seven calendar days after bid opening. No contract shall be awarded unless such report is submitted.

CERTIFICATION OF BIDDER

Bidder's Name: _____

Address: _____

1. Bidder has participated in a previous contract or subcontract subject to the Equal Opportunity Clause.

Yes ____ No ____

2. Compliance reports were required to be filed in connection with such contract or subcontract.

Yes ____ No ____

Certification -- The information above is true and complete to the best of my knowledge and belief.

NAME AND TITLE OF SIGNER (PLEASE TYPE)

SIGNATURE

DATE

**CERTIFICATION OF SUBCONTRACTOR REGARDING
EQUAL EMPLOYMENT OPPORTUNITY**

INSTRUCTIONS

This certification is required pursuant to Executive Order 11246 (30 F. R. 12319-25). The implementing rules and regulations provide that any bidder or prospective contractor, or any of their proposed subcontractors, shall state as an initial part of the bid or negotiations of the contract or subcontract whether it has participated in any previous contract or subcontract subject to the equal opportunity clause; and, if so, whether it has filed all compliance reports due under applicable instructions.

Where the certification indicates that the bidder has not filed a compliance report due under applicable instructions, such bidder shall be required to submit a compliance report within seven calendar days after bid opening. No contract shall be awarded unless such report is submitted.

CERTIFICATION OF SUBCONTRACTOR

Subcontractor's Name: _____

Address: _____

1. Subcontractor has participated in a previous contract or subcontract subject to the Equal Opportunity Clause.

Yes ____ No ____

2. Compliance reports were required to be filed in connection with such contract or subcontract.

Yes ____ No ____

Certification -- The information above is true and complete to the best of my knowledge and belief.

NAME AND TITLE OF SIGNER (PLEASE TYPE)

SIGNATURE

DATE

BID BOND

A. KNOW ALL MEN BY THESE PRESENT, THAT WE _____ hereinafter called the PRINCIPAL, as PRINCIPAL and the _____, of _____ a Corporation duly organized under the laws of the State of _____, and authorized to do business in the State of New Mexico, hereinafter called the SURETY, as SURETY are held and firmly bound unto Santa Fe County, a Municipal Corporation, hereinafter called the OBLIGEE, in the sum of _____ DOLLARS (\$_____) for the payment of which sum well and truly to be made, the said Principal and the said Surety, bind ourselves, our heirs, executors, administrators, successors, and assigns, jointly and severally, firmly be these presents.

WHEREAS, the Principal has submitted the accompanying bid, dated _____, 2025, for the Infrastructure Management Program – Roadway Improvements.

B. NOW, THEREFORE, if the Obligee shall accept the bid of the Principal and the Principal shall enter into a contract with the Obligee in accordance with the terms of such bid, and give such bond of bonds as may be specified in the bidding of Contract Documents with good and sufficient surety for the faithful performance of such contract and for the prompt payment of labor and material furnished in the prosecution thereof of in the event of the failure of the Principal to enter such contract and give such bond or bonds, if the Principal shall pay to the Obligee the difference not to exceed the penalty hereof between the amount specified in said bid and such larger amount for which the Obligee may in good faith contract with another party of perform the work covered by said bid, then this obligation shall be null and void, otherwise to remain in full force and effect.

C. SIGNED AND SEALED THIS _____ DAY OF _____, 2025.

BIDDER

(SEAL)

By: _____
PRINCIPAL

WITNESS

By: _____
SURETY

WITNESS

Title: _____

PERFORMANCE BOND

A. KNOW ALL MEN BY THESE PRESENT, THAT WE _____, as PRINCIPAL hereinafter called the “CONTRACTOR” and _____, as SURETY hereinafter called the “SURETY”, are held and firmly bound unto OBLIGEE Santa Fe County, a Political Subdivision of the State of New Mexico, hereinafter called the “COUNTY”, in the sum of _____ (\$ _____) dollars for the payment whereof CONTRACTOR and SURETY bind themselves, their heirs, executors, administrators, successors and assigns, jointly and severally, firmly by these presents.

B. WHEREAS, the CONTRACTOR has a written contract dated _____, 2025 with the COUNTY for the Infrastructure Management Program – Roadway Improvements, in accordance with drawings and specifications which contract is referenced made part hereof, and is hereinafter referred to as the “Contract.”

C. NOW, THEREFORE, THE CONDITION OF THIS OBLIGATION is such that, if CONTRACTOR shall promptly and faithfully perform said Contract (including any amendment thereto), then this obligation shall be null and void; otherwise it shall remain in full force and effect until the COUNTY shall by written instrument notify the SURETY that the obligation is discharged, except that the obligation shall continue for at least three (3) months following the expiration of the term of the Contract.

1. The SURETY hereby waives notice of any alteration or extension of the Contract time made by the COUNTY.
2. Whenever CONTRACTOR shall be, and is declared by the COUNTY to be in default under the Contract, the COUNTY having performed the COUNTY’S obligations thereunder, the SURETY must promptly remedy the default and shall promptly:
 - (1) Complete the Contract in accordance with its terms and conditions, or
 - (2) Obtain a bid or bids for submission to the COUNTY for completing the Contract in accordance with its terms and conditions, and upon determination by the COUNTY and SURETY of the lowest responsible bidder, arrange for a contract between such bidder and Santa Fe County, and make available as work progresses (even though there should be a default or a secession of defaults under the Contract or contracts of completion arranged under this paragraph) sufficient funds to pay the cost of completion less the balance of the Contract price, but not exceeding, including other costs and damages for which the SURETY may be liable hereunder, the amount set forth in the first paragraph hereof. The term “balance of the Contract price” as used in this paragraph, shall mean the total amount payable by the COUNTY to CONTRACTOR under the Contract and any amendments thereto, less the amount properly paid by the COUNTY to CONTRACTOR.

D. No right of action shall accrue on this Performance Bond to or for the use of any person or corporation other than Santa Fe County named herein or the heirs, executors, administrators, or successors of Santa Fe County.

E. This Bond shall be enforceable without the need to have recourse to any judicial or arbitral proceedings.

SIGNED AND SEALED THIS _____ DAY OF _____, 2025.

CONTRACTOR – PRINCIPAL (signature)

By: _____
(Printed name and title)

_____ (seal)
NOTARY PUBLIC

My Commission expires: _____

SURETY (signature)

(Printed name and title)

_____ (seal)
NOTARY PUBLIC

My Commission expires: _____

SURETY'S Authorized New Mexico Agent

LABOR AND MATERIAL PAYMENT BOND

KNOW ALL MEN BY THESE PRESENT, THAT WE _____ as PRINCIPAL hereinafter called the “PRINCIPAL and _____ as SURETY hereinafter called the “SURETY”, are held and firmly bound unto Santa Fe County, a Political Subdivision of the State of New Mexico as OBLIGEE hereinafter called the “COUNTY”, for the use and benefit of any claimants as herein below defined, in the amount of _____ (\$.) dollars for the payment whereof PRINCIPAL and SURETY bind themselves, their heirs, executors, administrators, successors, and assigns, jointly and severally, firmly by these presents.

WHEREAS, the PRINCIPAL has a written contract dated _____, 2025, with the COUNTY for the Infrastructure Management Program – Roadway Improvements, which must be constructed in accordance with drawings and specifications which contract is referenced and made a part hereof, and is hereinafter referred to as the “Contract.”

NOW, THEREFORE, THE CONDITION OF THIS OBLIGATION is such that, if PRINCIPAL shall promptly make payment to all claimants as hereinafter defined, for all labor and material used or reasonably required for use in the performance of the Contract, then this obligation shall be void; otherwise, it shall remain in full force and effect, subject to the following conditions:

1. A claimant is defined as one having a direct contract with the PRINCIPAL or with a subcontractor of the PRINCIPAL for labor, material, or both, used or reasonably required for use in the performance of the Contract, labor and material being construed to include but not be limited to that part of water, gas, power, light, heat, oil, gasoline, telephone services or rental of equipment directly applicable to the Contract.
2. The above named PRINCIPAL and SURETY hereby jointly and severally agree with the COUNTY that every claimant as herein defined, who has not been paid in full before the expiration of a period of ninety (90) days after the date on which the last of such claimant’s work or labor was done or performed, or materials were furnished by such claimant, prosecute a suit to final judgment for such sum or sums as may be justly due claimant, and have execution thereof. The COUNTY shall not be liable for payment of any cost or expenses of any such suit.
3. No suit or action shall be commenced hereunder by any claimant:
 - a. Unless claimant, or other than one having a direct contract with the PRINCIPAL, shall have written notice in the form of a sworn statement to the COUNTY and any one or both of the following: the PRINCIPAL or SURETY above named, within ninety (90) days after such said claim is made or suit filed, stating with substantial accuracy the amount claimed and the name of the party to whom the materials were furnished, or for whom the work or labor was done or performed.
 - b. Such notice shall be served by mailing the same by registered mail or certified mail, postage prepaid, in an envelope addressed to the COUNTY, PRINCIPAL or SURETY, at any place where an office is regularly maintained by said COUNTY, PRINCIPAL or SURETY for the transaction of business, or served in any manner in which legal process may be served in the State in which the aforesaid project is located, save that such service need not be made by a public officer.

4. Any suit under this Labor and Material Bond must be instituted in accordance with the statute of limitation under Section 37-1-3 NMSA 1978.
5. No right of action shall accrue on this Bond to or for the use of any person or corporation other than subcontractors or sub-subcontractors of the said Contract between PRINCIPAL and Santa Fe County named herein.

SIGNED AND SEALED THIS _____ DAY OF _____, 2025.

CONTRACTOR – PRINCIPAL (signature)

By: _____
(Printed name and title)

NOTARY PUBLIC (seal)

My Commission expires: _____

SURETY (signature)

(Printed name and title)

NOTARY PUBLIC (seal)

My Commission expires: _____

SURETY'S Authorized New Mexico Agent

SUBCONTRACTOR LISTING

1. To be fully executed and included with Bid as a condition of the Bid (13-4-31 through 13-4-42 NMSA 1978).
2. For the purposes of this Project all subcontractors, regardless of contract amount, must be listed on the subcontractor list.
3. **The Bidder shall list the Subcontractor’s Name, the City or County of the Place of Business and the Category of Work that will be done by each Subcontractor.**
4. For *all trades* that are listed *“only one bid received”* or *“no bid received”* the Contractor must list the names and telephone numbers of all businesses contacted for a quote.

Trade:	Name of Subcontractor:	
Address:		
Telephone No:	License No:	NM Dept. of Workplace Solutions Registration No.
Signature of Subcontractor (To be obtained after award of contract):		
If “no bid received” or “only one bid received” list name and telephone number of businesses contacted: 1. 2. 3.		
Trade:	Name of Subcontractor:	
Address:		
Telephone No:	License No:	NM Dept. of Workplace Solutions Registration No.
If “no bid received” or “only one bid received” list name and telephone number of businesses contacted: 1. 2. 3.		
Signature of Subcontractor (To be obtained after award of contract):		
Trade:	Name of Subcontractor:	
Address:		
Telephone No:	License No:	NM Dept. of Workplace Solutions Registration No.
Signature of Subcontractor (To be obtained after award of contract):		
If “no bid received” or “only one bid received” list name and telephone number of businesses contacted: 1. 2. 3.		

Trade:	Name of Subcontractor:	
Address:		
Telephone No:	License No:	NM Dept. of Workplace Solutions Registration No.
Signature of Subcontractor (To be obtained after award of contract):		
If "no bid received" or "only one bid received" list name and telephone number of businesses contacted: 1. 2. 3.		
Trade:	Name of Subcontractor:	
Address:		
Telephone No:	License No:	NM Dept. of Workplace Solutions Registration No.
If "no bid received" or "only one bid received" list name and telephone number of businesses contacted: 1. 2. 3.		
Signature of Subcontractor (To be obtained after award of contract):		
Trade:	Name of Subcontractor:	
Address:		
Telephone No:	License No:	NM Dept. of Workplace Solutions Registration No.
Signature of Subcontractor (To be obtained after award of contract):		
If "no bid received" or "only one bid received" list name and telephone number of businesses contacted: 1. 2. 3.		
Trade:	Name of Subcontractor:	
Address:		
Telephone No:	License No:	NM Dept. of Workplace Solutions Registration No.
Signature of Subcontractor (To be obtained after award of contract):		

If “no bid received” or “only one bid received” list name and telephone number of businesses contacted: 1. 2. 3.		
Trade:	Name of Subcontractor:	
Address:		
Telephone No:	License No:	NM Dept. of Workplace Solutions Registration No.
If “no bid received” or “only one bid received” list name and telephone number of businesses contacted: 1. 2. 3.		
Signature of Subcontractor (To be obtained after award of contract):		
Trade:	Name of Subcontractor:	
Address:		
Telephone No:	License No:	NM Dept. of Workplace Solutions Registration No.
Signature of Subcontractor (To be obtained after award of contract):		
If “no bid received” or “only one bid received” list name and telephone number of businesses contacted: 1. 2. 3.		
Trade:	Name of Subcontractor:	
Address:		
Telephone No:	License No:	NM Dept. of Workplace Solutions Registration No.
Signature of Subcontractor (To be obtained after award of contract):		
If “no bid received” or “only one bid received” list name and telephone number of businesses contacted: 1. 2. 3.		
Trade:	Name of Subcontractor:	
Address:		
Telephone No:	License No:	NM Dept. of Workplace Solutions Registration No.
Signature of Subcontractor (To be obtained after award of contract):		

If “no bid received” or “only one bid received” list name and telephone number of businesses contacted: 1. 2. 3.		
Trade:	Name of Subcontractor:	
Address:		
Telephone No:	License No:	NM Dept. of Workplace Solutions Registration No.
Signature of Subcontractor (To be obtained after award of contract):		
If “no bid received” or “only one bid received” list name and telephone number of businesses contacted: 1. 2. 3.		
Trade:	Name of Subcontractor:	
Address:		
Telephone No:	License No:	NM Dept. of Workplace Solutions Registration No.
Signature of Subcontractor (To be obtained after award of contract):		
If “no bid received” or “only one bid received” list name and telephone number of businesses contacted: 1. 2. 3.		

APPENDIX A

**ACKNOWLEDGEMENT OF RECEIPT OF INVITATION FOR BIDS FORM
Infrastructure Management Program – Roadway Improvements
IFB No. 2025-0208-PW/DK**

In acknowledgement of receipt of the Invitation for Bid the undersigned agrees that he/she has received a complete copy, beginning with the title page and table of contents, and ending with Appendix.

The acknowledgement of receipt should be signed and returned to the Procurement Specialist Senior no later than close of business on *Wednesday January 29th, 2025*. Only potential offerors who elect to return this form completed with the indicated intention of submitting a bid will receive copies of all Offeror written questions and the County’s written responses to those questions as well as Invitation for Bid addendums, if any are issued.

FIRM: _____

REPRESENTED BY: _____

TITLE: _____ PHONE NO.: _____

E-MAIL: _____ FAX NO.: _____

ADDRESS: _____

CITY: _____ STATE: _____ ZIP CODE: _____

SIGNATURE: _____ DATE: _____

This name and address will be used for all correspondence related to the Invitation for Bids.

Firm does/does not (**circle one**) intend to respond to this Invitation for Bid.

Dani Koussa
Procurement Specialist Senior
Santa Fe County
Purchasing Division
102 Grant Avenue
Santa Fe, NM 87504
Phone: (505) 986-6344
Fax: (505) 989-3243
E-mail: dkoussa@santafecountynm.gov

APPENDIX B

CAMPAIGN CONTRIBUTION DISCLOSURE

Pursuant to the Procurement Code, Sections 13-1-28, et seq., NMSA 1978 and NMSA 1978, § 13-1-191.1 (2006), as amended by Laws of 2007, Chapter 234, any prospective contractor seeking to enter into a contract with any state agency or local public body **for professional services, a design and build project delivery system, or the design and installation of measures the primary purpose of which is to conserve natural resources** must file this form with that state agency or local public body. This form must be filed even if the contract qualifies as a small purchase or a sole source contract. The prospective contractor must disclose whether they, a family member or a representative of the prospective contractor has made a campaign contribution to an applicable public official of the state or a local public body during the two years prior to the date on which the contractor submits a proposal or, in the case of a sole source or small purchase contract, the two years prior to the date the contractor signs the contract, if the aggregate total of contributions given by the prospective contractor, a family member or a representative of the prospective contractor to the public official exceeds two hundred and fifty dollars (\$250) over the two year period.

Furthermore, the state agency or local public body may cancel a solicitation or proposed award for a proposed contract pursuant to Section 13-1-181 NMSA 1978 or a contract that is executed may be ratified or terminated pursuant to Section 13-1-182 NMSA 1978 of the Procurement Code if: 1) a prospective contractor, a family member of the prospective contractor, or a representative of the prospective contractor gives a campaign contribution or other thing of value to an applicable public official or the applicable public official's employees during the pendency of the procurement process or 2) a prospective contractor fails to submit a fully completed disclosure statement pursuant to the law.

The state agency or local public body that procures the services or items of tangible personal property shall indicate on the form the name or names of every applicable public official, if any, for which disclosure is required by a prospective contractor.

THIS FORM MUST BE INCLUDED IN THE REQUEST FOR PROPOSALS AND MUST BE FILED BY ANY PROSPECTIVE CONTRACTOR WHETHER OR NOT THEY, THEIR FAMILY MEMBER, OR THEIR REPRESENTATIVE HAS MADE ANY CONTRIBUTIONS SUBJECT TO DISCLOSURE.

The following definitions apply:

“Applicable public official” means a person elected to an office or a person appointed to complete a term of an elected office, who has the authority to award or influence the award of the contract for which the prospective contractor is submitting a competitive sealed proposal or who has the authority to negotiate a sole source or small purchase contract that may be awarded without submission of a sealed competitive proposal.

“Campaign Contribution” means a gift, subscription, loan, advance or deposit of money or other thing of value, including the estimated value of an in-kind contribution, that is made to or received by an applicable public official or any person authorized to raise, collect or expend contributions on that official’s behalf for the purpose of electing the official to statewide or local office. “Campaign Contribution” includes the payment of a debt incurred in an election campaign, but does not include the value of services provided without compensation or unreimbursed travel or other personal expenses of individuals who volunteer a portion or all of their time on behalf of a candidate or political committee, nor does it include the administrative or solicitation expenses of a political committee that are paid by an organization that sponsors the committee.

“Family member” means spouse, father, mother, child, father-in-law, mother-in-law, daughter-in-law or son-in-law of (a) a prospective contractor, if the prospective contractor is a natural person; or (b) an owner of a prospective contractor.

“Pendency of the procurement process” means the time period commencing with the public notice of the request for proposals and ending with the award of the contract or the cancellation of the request for proposals.

“Prospective contractor” means a person or business that is subject to the competitive sealed proposal process set forth in the Procurement Code or is not required to submit a competitive sealed proposal because that person or business qualifies for a sole source or a small purchase contract.

“Representative of a prospective contractor” means an officer or director of a corporation, a member or manager of a limited liability corporation, a partner of a partnership or a trustee of a trust of the prospective contractor.

Name(s) of Applicable Public Official(s) if any: _____
(Completed by State Agency or Local Public Body)

DISCLOSURE OF CONTRIBUTIONS BY PROSPECTIVE CONTRACTOR:

Contribution Made By: _____

Relation to Prospective Contractor: _____

Date Contribution(s) Made: _____

Amount(s) of Contribution(s) _____

Nature of Contribution(s) _____

Purpose of Contribution(s) _____

(Attach extra pages if necessary)

Signature Date

Title (position)

--OR--

NO CONTRIBUTIONS IN THE AGGREGATE TOTAL OVER TWO HUNDRED FIFTY DOLLARS (\$250) WERE MADE to an applicable public official by me, a family member or representative.

Signature Date

Title (Position)

APPENDIX C

Resident Veterans Preference Certification

_____ (NAME OF CONTRACTOR) hereby certifies the following in regard to application of the resident veterans' preference to this procurement.

Please check box below:

I declare under penalty of perjury that my business prior year revenue starting January 1 ending December 31 is less than \$1M allowing me the 10% preference discount on this solicitation. I understand that knowingly giving false or misleading information about this fact constitutes a crime.

“I agree to submit a report or reports to the State Purchasing Division of the General Services Department declaring under penalty of perjury that during the last calendar year starting January 1 and ending on December 31, the following to be true and accurate:

“In conjunction with this procurement and the requirements of this business application for a Resident Veteran Business Preference/Resident Veteran Contractor Preference under Sections 13-1-21 or 13-1-22 NMSA 1978, which awarded a contract which was on the basis of having such veteran's preference, I agree to report to the State Purchasing Division of the General Services Department the awarded amount involved. I will indicate in the report the award amount as a purchase from a public body or as a public works contract from a public body as the case may be.”

“I understand that knowingly giving false or misleading information on this report constitutes a crime”.

I declare under penalty of perjury that this statement is true to the best of my knowledge. I understand that giving false or misleading statements about material fact regarding this matter constitutes a crime.

(Signature of Business Representative)*

(Date)

*Must be an authorized signatory of the Business.

The representations made in checking the boxes constitutes a material representation by the business that is subject to protest and may result in denial of an award or un-award of the procurement involved if the statements are proven to be incorrect.

SIGNED AND SEALED THIS _____ DAY OF _____, 2025.

NOTARY PUBLIC

My Commission Expires:

APPENDIX D N.M. WAGE DETERMINATION

PUBLIC WORKS PROJECT REQUIREMENTS

As a participant in a Public Works project valued at more than \$60,000 in the state of New Mexico, the following list addresses many of the responsibilities that are defined by statute or regulation to each project stakeholder.

Contracting Agency

- Ensure that all contractors wishing to bid on a Public Works project when the project is \$60,000 or more are actively registered with the Public Works and Apprenticeship Application (PWAA) website: <http://www.dws.state.nm.us/pwaa> (Contractor Registration) prior to bidding.
- Please submit Notice of Award (NOA) and Subcontractor List(s) to the PWAA website promptly after the project is awarded.
- Please update the Subcontractor List(s) on the PWAA website whenever changes occur.
- All sub-contractors and tiers (excluding professional services) regardless of contract amount must be listed on the Subcontractor List and must adhere to the Public Works Minimum Wage Act.
- Ninety days after project completion please go into the PWAA system and close the project. Only contracting agencies are allowed to close the project. Agents or contractors are not allowed to close projects.

General Contractor

- Provide a complete Subcontractor List and Statements of Intent (SOI) to Pay Prevailing Wages for all contractors, regardless of amount of work, to the contracting agency within 3 (three) days of award.
- Ensure that all subcontractors wishing to bid on a Public Works project have an active Contractor Registration with the Public Works and Apprenticeship Application (PWAA) website: <http://www.dws.state.nm.us/pwaa> prior to bidding when their bid will exceed \$60,000.
- Make certain the Public Works Apprentice and Training Act contributions are paid either to an approved Apprenticeship Program or to the Public Works Apprentice and Training Fund.
- Confirm the Wage Rate poster, provided in PWAA, is displayed at the job site in an easily accessible place.
- When the project has been completed, make sure the Affidavits of Wages Paid (AWP) are sent to the contracting agency.
- All subcontractors and tiers (excluding professional services) regardless of contract amount must pay prevailing wages, be listed on the Subcontractor List, and adhere to the Public Works Minimum Wage Act.

An Equal Opportunity Employer Page 1 of 2

Phone: 505-841-4400
Fax: 505-841-4424



Subcontractor

- Ensure that all subcontractors wishing to bid on a Public Works project have an active Contractor Registration with the Public Works and Apprenticeship Application (PWAA) website: <http://www.dws.state.nm.us/pwaa> prior to bidding when their bid will exceed \$60,000.
- Make certain the Public Works Apprentice and Training Act contributions are paid either to an approved Apprenticeship Program or to the Public Works Apprentice and Training Fund.
- All subcontractors and tiers (excluding professional services) regardless of contract amount must pay prevailing wages, be listed on the Subcontractor List, and adhere to the Public Works Minimum Wage Act.

Additional Information

Reference material and forms may be found in the New Mexico Department of Workforce Solutions Public Works web pages at: <https://www.dws.state.nm.us/Labor-Relations/Labor-Information/Public-Works>.

CONTACT INFORMATION

Contact the Labor Relations Division for any questions relating to Public Works projects by email at public.works@state.nm.us or call (505) 841-4400.



11.1.2.20 PREVAILING WAGE AND FRINGE BENEFIT AND APPRENTICESHIP CONTRIBUTION RATES: Pursuant to 11.1.2.13 NMAC, the director of the labor relations division of the department of workforce solutions hereby publishes the 2025 prevailing wage and fringe benefit rates and apprenticeship contributions that will apply to all wage rate decisions issued from January 1, 2025 through December 31, 2025.

**TYPE “A” - STREET, HIGHWAY, UTILITY AND LIGHT ENGINEERING
Effective January 1, 2025**

A. TYPE A: STREET, HIGHWAY, UTILITY AND LIGHT ENGINEERING			
Trade Classification	Base Rate	Fringe Rate	Apprenticeship
Bricklayer/block layer/stonemason	27.03	10.99	
Bricklayer/block layer/stonemason: Curry, DeBaca, Quay and Roosevelt counties	23.10	8.98	
Bricklayer/block layer/stonemason: Dona Ana, Otero, Eddy, and Lea counties	29.56	14.10	
Carpenter/lather	30.89	13.26	
Carpenter: Los Alamos county	37.39	14.18	
Cement mason	20.52	7.61	
Drywall Finisher/Taper	29.60	9.63	
Glazier/Fabricator	22.25	7.40	
Ironworker			
Ironworker journeyman	28.96	19.51	
Probationary ironworker	23.17	19.51	
Painter – Commercial	21.00	5.75	
Paper Hanger	21.00	5.75	
Plumber/pipefitter	43.07	17.25	
Electricians – outside classifications: Zone 1			
Ground man	27.18	13.32	
Equipment operator	38.99	17.67	
Lineman	49.25	20.82	
Journeyman technician	45.86	19.97	
Cable splicer	50.46	21.11	
Electricians – outside classifications: Zone 2			
Ground man	27.18	13.32	
Equipment operator	38.99	17.67	
Lineman	49.25	20.82	
Journeyman technician	45.86	19.97	
Cable splicer	50.46	21.11	
Electricians – outside classifications: Los Alamos county			
Ground man	27.95	13.34	
Equipment Operator	40.11	17.70	
Lineman/Technician	50.54	21.14	
Journeyman technician	47.19	20.29	
Cable Splicer	55.50	22.38	

Laborers			
Group I – Unskilled	17.39	7.51	
Group II – Semi-Skilled	17.39	7.51	
Group III – Skilled	18.89	7.51	
Group IV - Specialty	19.39	7.51	
Operators			
Group I	23.00	6.95	
Group II	24.00	6.95	
Group III	25.50	6.95	
Group IV	27.03	6.95	
Group V	27.16	6.95	
Group VI	27.41	6.95	
Group VII	27.62	6.95	
Group VIII	28.56	6.95	
Group IX	37.81	6.95	
Group X	42.19	6.95	
Soft Floor Layer	21.00	9.20	
Truck drivers			
Group I – IX	20.55	9.40	



2025 SUBSISTENCE, ZONE, AND INCENTIVE PAY RATES

All contractors are required to pay subsistence, zone, and incentive pay according to the particular trade

Asbestos workers or heat and frost insulators

- (1) Zone 1 shall consist of the area lying within the city limits of a circle whose radius is 66 miles from the city hall in Albuquerque or the city hall in El Paso - \$0.00 per day.
- (2) Zone 2 shall consist of Los Alamos county - \$40.00 per day if not furnished a company owned vehicle.
- (3) Zone 3 shall consist of the area lying beyond a circle whose radius is over 66 miles from the city hall in Albuquerque or the city hall in El Paso - \$85.00 per day.

Boilermakers/Blacksmiths

- (1) Per diem is calculated from city hall of the dispatch city or the employee's home address, whichever is closer to the job location,
- (2) Per diem is \$55.00 per day for travel between 70 and 120 miles and \$85.00 per day for travel over 120 miles.

Bricklayers

- (1) For Albuquerque area contractors, the starting point shall be at the intersection of I-40 and I-25 and shall continue to the job site. All other areas, the starting point shall be the employer's main office address.
- (2) Between 50 and 75 miles from the starting point, \$35.00 per day.
- (3) 76 or more miles from the starting point, \$55.00 per day.
- (4) All covered refractory work over 75 miles from the intersection of I-40 and I-25, \$80.00 per day.

Cement Masons

- (1) For employees who travel to Santa Fe from Albuquerque or vice versa, \$20.00 per day.
- (2) In all other work performed more than 50 miles from the employer's main office, \$50.00 per day.
- (3) Mutually agreed-upon lodging or transportation paid for by the employer will substitute for subsistence pay.



Drywall Finishers and Tapers

- (1) All zones are measured from the Albuquerque City Hall.
- (2) Up to 70 miles is a free zone.
- (3) Between 71 and 100 miles shall be paid \$30.00 expense allowance per day worked.
- (4) Over 101 miles shall be paid \$80.00 expense allowance per day worked.
- (5) Employees who travel from Santa Fe to Albuquerque will be paid \$30.00 per day or other mutually agreed upon lodging or transportation.
- (6) An area withing a 50-mile radius of the address where an employee permanently resides at the time of hire, outside of Santa Fe or Albuquerque, shall be a free zone.
- (7) When the employer pays for the hotel for out-of-town work, the employee shall receive \$30.00 per day for expenses. Each room shall not house more than two people per room.

Electricians (inside classifications)

- (1) For Albuquerque only:
 - (a) Zone 1 is classified as being within 40 miles from the main post office.
 - (b) Zone 2 shall extend up to 10 miles beyond zone 1. Work performed within zone 2 shall be compensated nine percent above the journeyman rate for zone 1.
 - (c) Zone 3 shall extend up to 20 miles beyond zone 1. Work performed within zone 3 shall be compensated fifteen percent above the journeyman rate for zone 1.
 - (d) Zone 4 shall extend 20 miles or more beyond zone 1. Work performed within zone 4 shall be compensated twenty six percent above the journeyman rate for zone 1.
- (2) For Los Alamos County only: work performed within the county shall be compensated fifteen percent above the zone 1 journeyman rate.
- (3) For all other counties:
 - (a) Zone 1 is:
 - (i) within six miles from the main post office for Raton, Tucumcari, and Farmington.
 - (ii) within eight miles from the main post office for Las Vegas.
 - (iii) within ten miles from the main post office for Santa Fe and Gallup.



- (iv) within twelve miles from the main post office for Belen, Carrizozo, Clovis, Los Lunas, Portales, Roswell, Ruidoso, Artesia, Carlsbad, Hobbs, and Lovington.
 - (v) within fourteen miles from the main post office for Espanola.
 - (b) Zone 2 shall extend up to 20 miles beyond zone 1. Work performed within zone 2 shall be compensated nine percent above the journeyman rate for zone 1.
 - (c) Zone 3 shall extend up to 30 miles from zone 1. Work performed within zone 3 shall be compensated fifteen percent above the journeyman rate for zone 1.
 - (d) Zone 4 shall extend beyond 30 miles from zone 1. Work performed within zone 4 shall be compensated twenty six percent above the journeyman rate for zone 1.
- (4) Commuting time to and from a job site at the beginning and end of each workday is not compensable. However, if workers are required to report to the shop at the start of the day or return to the shop at the end of the day, then that time spent traveling is compensable. Similarly, time spent traveling from job to job is compensable. In both cases, workers shall be paid for the time spent traveling and shall be furnished transportation by the employer. Under these conditions the Zone 1 rate and any applicable overtime will be paid.

Electricians (outside classification)

Zone 2: \$50.00 per diem to be paid for work 30 miles outside of Santa Fe and 60 miles outside of Albuquerque. No per diem in Los Alamos County.

Glaziers

- (1) When out-of-town travel is required, the employer shall provide suitable lodging with no more than two people per room and \$30.00 per day for expenses; or
- (2) Pay \$100.00 per day for expenses, plus their regular rate of pay.
- (3) Employees required to use a personal vehicle for travel to a jobsite beyond a 50-mile radius from their residence or the employer's shop, whichever is closer to the job, shall be compensated at the current IRS rate for actual mileage incurred beyond the 50-mile radius, plus their regular rate of pay for travel time.

Ironworkers

- (1) Travel more than 50 miles from the interchange of Interstate 40 and Interstate 25 or from the employee's home should be paid at \$9.00 per hour.



- (2) If travel is within Santa Fe County, travel time shall be paid at \$3.00 per hour.

Laborers

- (1) Type A:
 - (a) Work travel between 50 and 85 miles from the employer’s primary address should be compensated at \$3.50 per hour.
 - (b) Work travel 86 miles or greater from the employer’s primary address should be compensated at \$5.00 per hour.
- (2) Types B and C:
 - (a) Work travel over 70 miles from the union halls of Albuquerque, Espanola, Farmington, or Las Cruces shall be paid at \$7.00 per hour in travel pay, not to exceed 10 hours per day;
 - (b) If an overnight stay is necessary, the employer shall pay \$40.00 per day for meals, in addition to travel pay.
- (3) Type H – no zone subsistence pay:
- (4) If an employer provides the employee transportation and mutually agreeable, suitable lodging with no more than two people in a room in areas where overnight stays are necessary, subsistence rates do not apply.

Millwrights

- (1) All zone pay shall be calculated from the address of the city hall of the respective dispatch point using the “shortest route” filter on Google Maps.
- (2) Zone 1: Work traveled up to 45 miles from the city hall of the respective dispatch points is a free zone.
- (3) Zone 2: Work traveled between 45 miles and 100 miles shall be compensated at \$4.00 per hour above base wage.
- (4) Zone 3: Work traveled 101 miles or more shall be compensated at \$6.00 per hour above base wage.
- (5) If employer fails to provide suitable lodging, employer shall pay \$110.00 per diem.
- (6) If an employee’s principal place of residence is within 45 road miles from the project, no subsistence or travel time shall be paid.

Operating Engineers

- (1) Type A operators should be compensated for zone and subsistence as follows:



- (a) Work travel between 50 and 85 miles from the interchange of Interstate 25 and Interstate 40 in Albuquerque, or from the Farmington City Hall in Farmington, should be compensated at \$2.50 per hour.
- (b) Work travel 86 miles or more from the interchange of Interstate 25 and Interstate 40 in Albuquerque or from the Farmington City Hall in Farmington, should be compensated at \$4.00 per hour.
- (2) Type B and C operators:
 - (a) Base points for operators are 30 miles and beyond from the following base points or the employee's home:
 - (i) Bernalillo county courthouse in Albuquerque;
 - (ii) State capital building in Santa Fe;
 - (iii) City hall in Farmington.
 - (b) Zone and subsistence for Albuquerque, Santa Fe, and Farmington are as follows:
 - (i) work travel between 30 and 50 miles from the base point compensated at \$20.00 per day;
 - (ii) work travel between 51 and 100 miles from the base point compensated at \$50.00 per day;
 - (iii) work travel over 100 miles from the base point that involves an overnight stay compensated at \$100.00 per day.
 - (c) Zone and subsistence for Los Alamos County, \$100.00 per day. This takes precedence over the 50-mile radius for Santa Fe zone and subsistence.
 - (d) If an employer provides the employee transportation and mutually agreeable suitable lodging in area where overnight stays are necessary, subsistence rates do not apply.
- (3) Type H operators are not eligible for zone and subsistence pay.

Painters

- (1) When out-of-town travel is required, the employer shall provide suitable lodging with no more than two people per room and \$30.00 per day for expenses.
- (2) When out-of-town travel is required and employer does not provide lodging, employer shall pay \$100 per day for expenses, plus their regular rate of pay.
- (3) Employees required to use a personal vehicle for travel to a jobsite beyond a 60-mile radius from their residence or the employer's shop, whichever is closest to the job, shall be compensated at the current IRS rate for actual mileage incurred beyond the 60-mile radius, plus their regular rate of pay for travel time.



Paper hangers

- (1) When out-of-town travel is required, the employer shall provide suitable lodging with no more than two people per room and \$30.00 per day for expenses.
- (2) When out-of-town travel is required and employer does not provide lodging, employer shall pay \$100.00 per day for expenses, plus their regular rate of pay.
- (3) Employees required to use a personal vehicle for travel to a jobsite beyond a 50-mile radius from their residence or the employer's shop, whichever is closer to the job, shall be compensated at the current IRS rate for actual mileage incurred beyond the 50-mile radius, plus their regular rate of pay for travel time.

Plasterers

- (1) Employees who travel from Albuquerque to Santa Fe should be compensated at \$20.00 per day.
- (2) Except for employees who travel from Santa Fe to Albuquerque, work travel 75 miles or more from the employer's office over the most typically traveled route should be compensated at \$5.00 per hour and capped at \$40.00 per day.

Plumbers and pipefitters

- (1) Work travel for 90 or more miles from an employee's primary residence, and involving an overnight stay, should be compensated at \$80.00 per day.
- (2) No zone or subsistence pay is required should the employer elect to cover the room cost.

Roofers

Work travel requiring an overnight stay should be compensated at \$35.00 per day for food. Employer should provide and pay for a suitable hotel. When employees are assigned to jobs located 60 or more miles from the employer's place of business, transportation to and from the job site must be provided.

Sheet metal workers

- (1) Subsistence will be paid in any area outside the employer's home zone unless the jobsite is within 90 miles, by most direct regularly traveled route, of an employee's principal place of residence. In which case the employer will not be required to pay subsistence to that employee while working on the jobsite.
- (2) If an overnight stay is required, \$120.00 subsistence will be paid for each day worked outside of the employer's home zone.



- (3) No subsistence pay is required should employer decide to cover room costs at a suitable location and no more than two workers are in a room.
- (4) Zone 1: any are within an employer's home zone. An employer's home zone shall consist of 90 miles by most direct regularly traveled route from the main post office in the municipality of the employer's primary place of business, and including Los Alamos and Espanola, regardless of mileage.
- (5) Zone 2 (Industrial):
 - (a) Industrial work will be defined as all new construction work performed on the following types of facilities: electrical generation plants, co-generation plants 50 megawatts and over, refineries, natural and LP gas plants, mills, mines, and concentrators. Maintenance and retrofit work are excluded.
 - (b) The minimum rate of pay for all work described in subsection (a) of this section will be as indicated under zone 3 of the public works prevailing wage rates in 11.1.2.20 NMAC.
- (6) Zone 3 (Los Alamos):
 - (a) All work on Los Alamos National Laboratory property, and all prevailing wage work within the county of Los Alamos.
 - (b) The minimum rate of pay for all work described in subsection (a) of this section will be indicated under zone 3 of the public works prevailing wage rates in 11.1.2.20 NMAC.
- (7) Travel:
 - (a) All time spent traveling during the regular workday will be considered time worked and will be paid at the zone 1 rate of pay, provided such travel is directed by the employer. Travel before or after the regular workday will not be considered time worked and will not be paid unless required by federal or state law. If required by law, all time spent traveling outside the regular workday will be paid at the overtime rate of time and a half times two thirds the regular zone 1 rate of pay.
 - (b) If an employer send an employee to perform work outside the territorial jurisdiction of the United States or Canada, travel pay and subsistence arrangements shall be negotiated locally.

Soft floor layer

- (1) Zone 1: Base pay for an area within a 30-mile radius from the main post office in the city or town where the employee permanently resides. Albuquerque, Santa Fe, and Belen shall be considered Zone 1.



- (2) Zone 2: Work travel between 30 and 75 miles from the main post office in the town where an employee permanently resides shall be compensated at \$1.00 per hour above base pay.
- (3) Zone 3: Work travel 75 miles or more from the main post office in the town where an employee permanently resides shall be compensated at \$3.13 per hour above base pay.
- (4) Employer will furnish transportation or gasoline for all work performed beyond the 30-mile radius that encompasses the free cities of Albuquerque, Santa Fe, or Belen.
- (5) When the employee is directed to report to a job site and the distance to the job site requires the employee to stay out of town overnight, the employer shall provide housing arrangements for the affected employees.

Sprinkler fitters

- (1) Work travel between 60 and 80 miles from the employee's primary residence should be compensated at \$23.00 per day.
- (2) Work travel between 81 and 100 miles from the employee's primary residence should be compensated at \$33.00 per day.
- (3) Work travel of 101 miles or more from the employee's primary residence should be compensated at \$125.00 per day.
- (4) No zone or subsistence pay shall be paid when the employer provides daily transportation and the employee elects to travel back and forth from home.

APPENDIX E

SAMPLE CONSTRUCTION CONTRACT

**AGREEMENT BETWEEN SANTA FE COUNTY AND CONTRACTOR
FOR CONSTRUCTION SERVICES FOR BID NAME**



**SANTA FE COUNTY
PURCHASING DIVISION
2014 EDITION**

[Changes, additions, deletions and/or any modifications other than those agreed upon by the parties upon execution of this contract, without the written consent of Santa Fe County shall render this document null and void.]

Hereafter “County”:

Hereafter “Contractor”:

Gregory S. Shaffer, County Manager
Santa Fe County
PO Box 276
Santa Fe, New Mexico 87504-0276
TELEPHONE: 505-986-6200
FAX: 505-995-2740

TELEPHONE: _____
E-MAIL ADDRESS: _____

Table of Contents

	Page No
RECITALS.....	10
Article 1.....	10
The Contract Documents.....	10
1.1 Documents.....	10
1.2 Certificates and Documentation	10
Article 2 The Work	11
2.1 The Work.....	11
Article 3	
Effective Date, Time of Commencement, Substantial Completion and Amendments 11	
3.1 Effective Date.....	11
3.2 Time of Commencement	11
3.3 Substantial Completion	11
3.4 Time for Completion and Liquidated Damages	12
3.5 Amendments.....	13
Article 4 Contract Sum.....	13
4.1 Lump Sum	13
4.2 Contract Amount	13
Article 5 Progress Payments.....	14
5.1 Progress Payments.....	14
Article 6 Final Payment.....	15
6.1 Final Payment.....	15
6.2 Acceptance of Final Payment Constitutes Release	15
GENERAL CONDITIONS	
1. Definitions.....	17
1.1 Application for Payment	17
1.2 Change Order	17
1.3 Calendar Day	17
1.4 Contract Period.....	17
1.5 Contractor.....	17
1.6 Construction Documents	17
1.7 Construction Schedule.....	17
1.8 Day	17
1.9 Labor and Material Payment Bond	17
1.10 Lump Sum Agreement	18
1.11 Lump Sum Bid	18
1.12 Lump Sum Contract	18
1.13 Payment Bond	18
1.14 Performance Bond.....	18
1.15 Progress Payment	18
1.16 Progress Schedule.....	18

1.17 Punch List.....18

1.18 Schedule of Values.....18

1.19 Services18

1.20 Stipulated Sum Agreement.....19

1.21 Subcontractor.....19

1.22 Unit Price Contract.....19

1.23 Unit Prices.....19

1.24 Working Day19

1.25 Work on the Project19

2. Contract and Contract Documents19

2.1 Entire Agreement19

2.2 Relationship of Contract Documents19

2.3 Conflicting Conditions19

3. Plans, Specifications and Addenda.....20

3.1 The plans, specifications and addenda20

3.2 Certificates and Documents Incorporated20

4. Contract Security - Bonds20

4.1 Performance Bond.....20

4.2 Payment Bond20

4.3 Additional or Substitute Bond.....20

4.4 Labor and Material Bond20

5. Terms and Meanings20

5.1 Words and Phrases21

5.2 Gender, Singular/Plural21

5.3 Captions & Section Headings.....21

5.4 Interchangeable Terms21

6. Compliance with Applicable Law, Choice of Law21

6.1 Agreement governed by the laws of the State of New Mexico21

6.2 Contractor shall comply with all applicable laws, ordinances & regulations.....21

6.3 Minimum Wage Rate21

6.4 Litigation shall be federal and state district courts of New Mexico21

6.5 Bribes, Kickbacks and Gratuities21

6.6 New Mexico Tort Claims Act21

6.7 Provision Required by Law Deemed Inserted22

7. Effective Date & Term.....22

7.1 Agreement shall become effective22

7.2 Substantial Completion2

8. Termination22

8.1 Termination of Agreement for Cause.....23

8.2 Termination for Convenience.....23

8.3 Right of the County to Terminate Contract.....23

9. Appropriations & Authorizations23

10. Amendments – Change Orders23

11. Indemnification23

11.1 Contractor shall indemnify23

11.2 County shall have right to control and participate in defense
of demand or suit.....24

11.3 Contractor’s obligations shall not be limited by provisions of insurance policy.....24

12. Grievement Procedure During Contract Administration24

12.1 Claims, Disputes or other matters24

12.2 Settlement Agreement24

12.3 Contractor shall carry on Work during dispute resolution proceedings24

13. Dispute Resolution24

13.1 Mediation24

13.2 Mediation Process24

13.3 Litigation25

14. Insurance25

14.1 Insurance required before contractor commences work.....2

14.2 Proof of Carriage of Insurance25

14.3 General Conditions.....25

14.4 General Liability Insurance, including automobile25

14.5 Subcontractor’s Public Liability & Property Damage Insurance25

14.6 Worker’s Compensation Insurance25

14.7 Scope of Insurance and Special Hazards.....26

14.8 Builder’s Risk Insurance26

14.9 Increased Limits26

14.10 Additional Insured.....26

15. Independent Contractor26

15.1 Contractor and its agents are independent contractors26

15.2 Contractor shall not subcontract without written approval27

15.3 Contractor shall maintain detailed time records.....27

16. Conflict of Interest of Officers or Employees of the Local Jurisdiction.....27

16.1 No officer or employee shall have any interest shall have any interest.....27

16.2 No official of the County shall be interested personally in this contract.....27

16.3 Contractor warrants no conflict of interest.....27

17. Assignment.....27

17.1 Contractor shall not assign or transfer any interest in this Agreement.....27

18. Subcontracting.....28

18.1 Contractor shall not subcontract without written notice to County28

18.2 Contractor shall provide listing of subcontractors.....28

18.3 Contractor shall adhere to all provisions of Subcontractor’s Fair Practices Act28

18.4 Contractor shall provide Non-Collusion and EEO forms for all subcontractors.....28

18.5 Contractor shall not award any work without written notice to County.....28

18.6 Contractor shall be responsible for acts and omissions of subcontractors.....28

18.7 Contractor shall cause appropriate provisions in all subcontracts28

18.8 Nothing shall create contractual relation between County and subcontractors.....28

18.9 New Mexico Little Miller Act28

19. Personnel29

19.1 All work performed by Contractor29

19.2 Contractor shall secure all qualified personnel required to perform work29

20. Notices.....29

20.1 Notice required shall be in writing.....29

20.2 Nothing shall preclude the giving of written Notice29

21. Release29

22. Waiver.....29

CONDITIONS OF THE WORK

1. Additional Instructions & Detail Drawings.....31

1.1 Additional instructions & drawings as necessary.....31

2. Shop or Setting Drawings.....31

2.1 Contractor shall submit copies of shop or setting drawing31

3. Materials, Services and Facilities31

4. Contractor’s Title to Materials31

4.1 No materials or supplies shall be purchased by subject to chattel mortgage.....31

5. Inspection and Testing of Materials32

5.1 All material and equipment shall be subject to adequate inspection.....32

5.2 Materials of construction shall be subject to inspection and testing32

6. “Or Equal” Clause.....32

6.1 To establish a standard32

7. Patents32

7.1 Patented or Unpatented Invention32

7.2 License or Royalty Fees32

7.3 Copyrighted Design.....32

8. Surveys, Permits and Regulations33

8.1 County will furnish all surveys33

8.2 Contractor shall procure and pay all permits, licenses and approvals.....33

8.3 Contractor shall comply with all laws, ordinances, rules orders & regulations33

9. Contractor’s Obligations33

9.1 Contractor shall perform all work and furnish all materials,
equipment, machinery33

9.2 Contractor shall complete entire work33

10. Weather Conditions.....33

10.1 Temporary suspension of Work33

11. Protection of Work and Property - Emergency34

11.1 Contractor shall safeguard County’s property.....34

11.2 Emergency which threatens loss or injury of property.....34

11.3 Contractor shall act as instructed or authorized.....34

11.4 Reimbursement claimed by Contractor.....34

12. Inspection34

12.1 County shall be permitted to inspect all work, materials, payrolls, records.....34

13. Reports, Records and Data34

13.1 Contractor shall submit to County schedules, payrolls, reports, estimates.....34

superintendent by Contractor34

14.1 Contractor shall employ a construction superintendent.....34

15. Changes in Work.....35

15.1 No changes in Work without written approval.....35

16. Extras.....35

16.1 County may order extra Work.....35

17. Inspection of Services35

17.1 Contractor shall provide inspection system.....35

17.2 County has the right to inspect and test all services.....35

17.3 Contractor shall furnish all reasonable facilities and assistance.....35

17.4 If any services do not conform with Contract requirements36

17.5 County may perform the services and charge Contractor36

18. Correction of Work36

18.1 Work shall be made good if failure to meet County approval.....36

19. Warranty of Construction.....36

19.1 Warrants that Work conforms with Contract requirements.....36

19.2 One-year warranty.....36

19.3 Contractor shall remedy any failure to conform.....36

19.4 Contractor shall restore any Work damaged37

19.5 County shall notify Contractor of any failure, defect or damage37

19.6 If Contractor fails to remedy37

19.7 Contractor shall obtain all warranties, executed in writing.....37

19.8 Contractor’s warranty has expired37

19.9 Defect in County furnished material or design37

19.10 County’s rights under the Inspection and Acceptance Clause37

20. Subsurface Conditions Found Different37

20.1 Subsurface conditions materially differing from plans and specifications.....37

21. Claims for Extra Cost.....37

21.1 No claim for extra work or cost.....37

22. Construction Schedule and Periodic Estimates38

22.1 Estimated construction progress schedule.....38

22.2 Progress Schedule.....38

23. Assignments38

23.1 Contractor shall not assign38

24. Mutual Responsibility of Contractors38

24.1 Acts of Negligence38

25. Separate Contract39

25.1 Coordination with other contractors.....39

26. Architect/Engineer’s Authority39

26.1 Orders & Directions to execution of the Work39

26.2 Decisions concerning meaning and intent.....39

27. Stated Allowances39

27.1 Contract sum for all allowances39

28. Use of Premises and Removal of Debris.....40

28.1 Contractor undertakes at own expense.....40

29. Quantities of Estimate40

29.1 Increase and decrease of estimated quantities40

30. Lands and Right-of-Way40

30.1 County shall obtain all lands and rights-of way40

31. General Guaranty40

31.1 Work not done in accordance with contract documents.....40

32. Protection of Lives and Health.....41

32.1 Protection of persons and property.....41

33. Interest of Member41

33.1 BCC shall not have any share or interest.....41

34. Other Prohibited Interests41

34.1 No County official or others to be personally interested in Contract.....41

35. Use & Occupancy Prior to Acceptance by County41

35.1 Partial Occupancy by County41

 Attachment A Bid Sheets42

 Attachment B Addenda and Modifications.....43

 Exhibit A Project Manual.....44

 Exhibit B Technical Specifications45

 Exhibit C Labor and Material Payment Bond46

 Exhibit D Performance Bond48

 Exhibit E Assignment of Antitrust Claims.....50

 Exhibit F Certificate of Liability Insurance51

 Exhibit G Notice of Contract Award.....52

 Exhibit H Notice to Proceed.....53

 Exhibit I Change Order).....54

 Exhibit J Certificate of Substantial Completion56

RECITALS

WHEREAS, in accordance with Section 13-1-103 through Section 13-1-110 NMSA 1978, the County issued Invitation for Bid (IFB) No. for construction services for the ; and

WHEREAS, the Contractor submitted its bid, in response to IFB No. ; and

WHEREAS, the County is authorized to enter into a contract for the Project pursuant to Sections 13-1-100, NMSA 1978; and

WHEREAS, the Contractor hereby represents that it is a licensed contractor of the State of New Mexico pursuant to Chapter 60, Article 13 NMSA 1978; and

WHEREAS, the Owner agrees to hire the Contractor, and the Contractor agrees to provide Construction Services as required herein for the Project in accordance with the terms and conditions set forth in this Agreement; and

WHEREAS, the County requires the services of the Contractor, and the Contractor is willing to provide these services and both parties wish to enter into this Agreement.

**ARTICLE 1
THE CONTRACT DOCUMENTS**

1.1 DOCUMENTS

The contract documents consist of the following:

- Agreement between County and Contractor
- General Conditions of the Construction Contract
- Conditions of the Work of the Construction Contract
- Bid Sheet Attachment A
- Addenda and Modifications issued Attachment B
- before and after execution of this Contract

1.2 CERTIFICATES AND DOCUMENTATION

The following certificates and documentation are hereby attached as exhibits as follows:

- Project Manual Exhibit A
- Technical Specifications as listed in Plan Set Exhibit B
- Labor and Material Payment Bond Exhibit C
- Performance Bond Exhibit D
- Assignment of Antitrust Claims Exhibit E
- Certificate of Insurance Exhibit F

Notice of Award
Notice to Proceed
Change Order
Certificate of Substantial Completion

Exhibit G
Exhibit H
Exhibit I
Exhibit J

**ARTICLE 2
THE WORK**

2.1 THE WORK

The Contractor shall perform all the Work required by the Contract Documents for the following:

Insert description of work

**ARTICLE 3
EFFECTIVE DATE, TIME OF COMMENCEMENT,
SUBSTANTIAL COMPLETION AND AMENDMENTS**

3.1 EFFECTIVE DATE

The Effective Date of this Agreement is the date of signature by the County.

3.2 TIME OF COMMENCEMENT

The work to be performed under this Contract shall be commenced no later than ten (10) consecutive calendar days after the date of written Notice to Proceed issued by the County, hereto attached as Exhibit H.

3.3 SUBSTANTIAL COMPLETION

The Contractor shall achieve Substantial Completion of the entire work no later than 180 calendar days from the date of the Notice to Proceed, except as hereafter extended by valid written Change Order. A Certificate of Substantial Completion, attached hereto as Exhibit J, will be issued by the County to the Contractor, as adjusted by any Change Order, attached hereto as Exhibit I.

3.4 TIME FOR COMPLETION AND LIQUIDATED DAMAGES

Should the Contractor neglect, refuse, or otherwise fail to complete the Work within the time specified in this Article, the Contractor agrees that Liquidated Damages in the amount of \$500.00 shall be assessed per each calendar day that expires after the date of substantial completion, as adjusted by any change order, and until issuance by the County of a certificate of Substantial Completion in accordance with Paragraph 7 (Effective Date and Term) of the General Conditions.

- A. It is hereby understood and mutually agreed, by and between the Contractor and the County, that the date of beginning and the time for completion as specified in the contract of the work to be done hereunder are *essential conditions* of this contract and it is further mutually understood and agreed that the work outlined in this contract shall be commenced on a date to be specified in the "Notice to Proceed."
- B. The Contractor agrees that work shall be prosecuted regularly, diligently and uninterruptedly at such rate of progress as will insure full completion thereof within the time specified. It is expressly understood and agreed, by and between the Contractor and the County, that the time for the completion of the work described herein is a reasonable time for the completion of the same, taking into consideration the average climatic range and usual industrial conditions prevailing in this locality.
- C. If the Contractor shall neglect, fail or refuse to complete the work within the time herein specified or any proper extension thereof granted by the County, then the Contractor does hereby agree, as a part consideration for the awarding of this contract, to pay to the County the amount specified in the contract, not as a penalty but as liquidated damages for such breach of contract as herein set forth, for each and every calendar day that the contract shall be in default after the time stipulated in the contract for completing the work.
- D. The amount is fixed and agreed upon by and between the Contractor and the County because of the impracticability and extreme difficulty of fixing and ascertaining the actual damages the County would in such event sustain, and the amount is agreed to be the amount of damages which the County would sustain and the amount shall be retained from time to time by the County from current periodical estimates.
- E. It is agreed that time is of the essence of each and every portion of this contract and of the specifications wherein a definite and certain length of time is fixed for the performance of any act whatsoever and where under the contract an additional time is allowed for the completion of any work, the new time limit fixed by such extension shall be of the essence of this contract. Provided that the Contractor shall not be charged with liquidated damages or any excess cost when the County determines that the Contractor is without fault and the Contractor's reasons for the time extension are acceptable to the County. Provided that the Contractor shall not be charged with liquidated damages or any excess cost when the delay in completion of the work is due:
 - 1. To any preference, priority or allocation order duly issued by the County;
 - 2. To unforeseeable cause beyond the control and without the fault or negligence of the Contractor, including but not restricted to, acts of God, or of the public enemy, acts of the County, acts of another contractor in the performance of a contract with the County, fires, floods, epidemics, quarantine restrictions, strikes, freight embargoes, and severe weather;
 - 3. To any delays of subcontractors or suppliers occasioned by any of the causes specified in subsections above.

- F. Provided further, that the Contractor shall, within ten days from the beginning of such delay, unless the County shall grant a further period of time prior to the date of final settlement of the contract, notify the County in writing of the causes of the delay, who shall ascertain the facts and extent of the delay and notify the Contractor within a reasonable time of its decision in the matter.

3.5 AMENDMENTS

This Agreement may be amended by mutual agreement by both parties upon issuance of a Change Order by the County to the Contractor. Any such amendment shall be in accordance with Paragraph 10 (Amendments – Change Orders) of the General Conditions. Unless otherwise agreed to by the parties, an amendment shall not affect any outstanding Purchase Order(s) issued by the County prior to the effective date of the amendment.

**ARTICLE 4
CONTRACT SUM**

4.1 CONTRACT SUM

The County shall pay the Contractor in current funds for the performance of the Work, subject to additions and deductions by Change Order as provided in the Contract Documents, an agreed upon Lump Sum of (enter dollar amount in words) Dollars (\$0.00 enter dollar amount), exclusive of New Mexico gross receipts tax.

4.2 CONTRACT AMOUNT

The Contract sum is determined as follows: (insert data from bid form concerning base bid, alternates, etc.)

Base Bid	\$	
List Alternates, if applicable	\$	
	\$	
	\$	
Total Contract Amount	\$, exclusive of NM grt

**ARTICLE 5
PROGRESS PAYMENTS**

5.1 PROGRESS PAYMENTS

Based upon an Application for Payment submitted to the County by the Contractor and Certificates for Payment issued by the County, the County shall make progress payments on account of the Contract sum to the Contractor as provided in the Contract documents for the period ending the last day of the month as follows:

- A. No later than 21 working days following receipt by the County of an undisputed Application for Payment, one hundred percent (100%) of the portion of the Contract Sum properly allocable to labor, materials, and equipment incorporated in the Work and one hundred percent (100%) of the portion of the Contract Sum properly allocable to materials and equipment suitably stored at the site or some other location agreed upon in writing for the period covered by the Application for Payment, less the aggregate of previous payments made by the County; less such amounts as the Architect/ Engineer shall determine for all incomplete Work and unsettled claims as provided in the Contract Documents (Section 57-28-5, NMSA 1978).
- B. When making payments, the County, Contractor or subcontractor shall not retain, withhold, hold back or in any other manner not pay amounts owed for work performed. For additional information regarding retainage and the Prompt Payment Act (refer to Section 57-28-5, NMSA 1978).
- C. Contractors and subcontractors shall make prompt payment to their subcontractors and suppliers for amounts owed for work performed on the construction project within 21 days after receipt of payment from the County, contractor or subcontractor. If the contractor or subcontractor fails to pay its subcontractor and suppliers by first-class mail or hand delivery within twenty-one days after receipt of an undisputed request for payment, the contractor or subcontractor shall pay interest to its subcontractors and suppliers beginning on the 22nd day after payment was due, computed at one and one-half percent of the undisputed amount per month or fraction of a month until payment is issued. These payment provisions apply to all tiers of contractors, subcontractors and suppliers (Section 57-28-1 et. seq. NMSA 1978).
- D. In preparing estimates the material delivered on the site and preparatory work done may be taken into consideration.
- E. All material and work covered by partial payments made shall thereupon become the sole property of the County, but this provision shall not be construed as relieving the Contractor from the sole responsibility for the care and protection of materials and work upon which payments have been made or the restoration of any damaged work, or as a waiver of the right of the County to require the fulfillment of all of the terms of the contract.
- F. County's right to withhold certain amounts and make application thereof. The Contractor agrees that it will indemnify and hold the County harmless from all claims growing out of the lawful demands of subcontractors, laborers, workmen, mechanics, material men, and furnisher of machinery and parts thereof, equipment, power tools, and all supplies, including commissary, incurred in the furtherance of the performance of this contract. The Contractor shall, at the County's request, furnish satisfactory evidence that all obligations of the nature hereinabove designated have been paid, discharged, or waived. If the Contractor fails so to do, then the County may, after having served written notice on the said Contractor, either pay unpaid bills, of which the County has written notice, direct, or withhold from the Contractor's

unpaid compensation a sum of money deemed reasonably sufficient to pay any and all such lawful claims until satisfactory evidence is furnished that all liabilities have been fully discharged whereupon payment to the Contractor shall be resumed, in accordance with the terms of this contract, but in no event shall the provisions of this sentence be construed to impose any obligations upon the County to either the Contractor or its Surety. In paying any unpaid bills of the Contractor, the County shall be deemed the agent of the Contractor, and any payment so made by the County shall be considered as a payment made under the contract by the County to the Contractor and the County shall not be liable to the Contractor for any such payments made in good faith.

**ARTICLE 6
FINAL PAYMENT**

6.1 FINAL PAYMENT

The entire unpaid balance of the Contract Sum, shall be paid by the County to the Contractor within 30 calendar days after notification of the County by the Architect/Engineer that all incomplete and unacceptable work that was noted during the Substantial Completion Inspection and listed on the attachment to the Certificate of Substantial Completion has been corrected, and provided the Contract has been fully performed and a final Certificate for Payment has been issued by the Architect/Engineer. In addition, the Contractor shall provide to the County a certified statement of Release of Liens and Consent of Surety.

6.2 ACCEPTANCE OF FINAL PAYMENT CONTITUTES RELEASE

The acceptance by the Contractor of final payment shall be and shall operate as a release to the County of all claims and all liability to the Contractor for all things done or furnished in connection with this work and for every act and neglect of the County and others relating to or arising out of this work. No payment, however, final or otherwise, shall operate to release the Contractor or its sureties from any obligations under this contract or the Performance and Payment Bond.

IN WITNESS WHEREOF, the parties have duly executed this Agreement as of the date first written above.

SANTA FE COUNTY

Santa Fe County Board of County Commissioners

ATTESTATION

Santa Fe County Clerk

Date

Approved as to form:

Santa Fe County Attorney

Date

CONTRACTOR:

Signature

Date

Print name and title

**GENERAL CONDITIONS
TO AGREEMENT BETWEEN SANTA FE COUNTY
AND CONTRACTOR
FOR CONSTRUCTION SERVICES**

1.0 DEFINITIONS

The following terms as used in this contract are respectively defined as follows:

- 1.1** *Application for Payment* Contractor's written request for payment for completed portions of the work and, for materials delivered or stored and properly labeled for the respective project.
- 1.2** *Change Order* A written document between the County and the Contractor signed by the County and the Contractor authorizing a change in the work or an adjustment in the contract sum or the contract time. A change order may be provided with written authority from the County for such procedure and that a copy of such written authority is furnished to the Contractor upon request. The contract sum and the contract time may be changed only by change order. A change order may be in the form of additional compensation or time; or less compensation or time known as a Deduction (from the contract) the amount deducted from the contract sum by change order.
- 1.3** *Calendar Day* Each and every Day shown on the calendar, beginning and ending at midnight.
- 1.4** *Contract Period* The elapsed number of working days or calendar days from the specified date of commencing work to the specified date of completion, as specified in the contract.
- 1.5** *Contractor* is a person, firm or corporation with whom the contract is entered into with the County.
- 1.6** *Construction Documents* All drawings, specifications and addenda associated with a specific construction project.
- 1.7** *Construction Schedule* A schedule in form satisfactory to the County, showing the proposed dates of commencement and completion of each of the various subdivisions of work required under the contract documents and the anticipated amount of each monthly payment that will become due the Contractor in accordance with the progress schedule.
- 1.8** *Day* The word "day" means a calendar day of 24 hours measured from midnight to the next midnight.
- 1.9** *Labor and Material Payment Bond* A written form of security from a surety (bonding)

company to the County, on behalf of an acceptable prime Contractor or subcontractor, guaranteeing payment to the County in the event the Contractor fails to pay for all labor, materials, equipment, or services in accordance with the contract. (see Performance Bond and Surety Bond).

- 1.10** *Contract Sum Agreement (See Stipulated Sum Agreement)*
- 1.11** *Contract Sum Bid* A single entry amount to cover all labor, equipment, materials, services, and overhead and profit for completing the construction of a variety of unspecified items of work without the benefit of a cost breakdown.
- 1.12** *Contract Sum Contract* A written contract between the County and Contractor wherein the County agrees to pay the contractor a specified sum of money for completing a scope of work consisting of a variety of unspecified items or work.
- 1.13** *Payment Bond* A written form of security from a surety company to the County, on behalf of an acceptable prime contractor or subcontractor, guaranteeing payment to all persons providing labor, materials, equipment, or services in accordance with the contract.
- 1.14** *Performance Bond* A written form of security from a surety company to the County, on behalf of an acceptable prime contractor or subcontractor, guaranteeing the completion of the work in accordance with the terms of the contract.
- 1.15** *Progress Payment* A payment from the County to the Contractor determined by calculating the difference between the completed work and materials stored and a predetermined schedule of values or unit costs. (see Schedule of Values, Unit Costs).
- 1.16** *Progress Schedule* A pictorial or written schedule (including a graph or diagram) that shows proposed and actual start and completion dates of the various work elements.
- 1.17** *Punch list* a list of items to be completed or corrected, prepared by the County, checked and augmented as required by the Contractor or Construction Manager is appended hereto as Exhibit J. Note: The failure to include any item on such list does not relieve the Contractor of the responsibility to complete all work in accordance with the contract documents.
- 1.18** *Schedule of Values* A statement furnished by the Contractor to the County reflecting the portions of the contract sum allotted for the various parts of the work and used as the basis for reviewing the Contractor's Applications for Payment.
- 1.19** *Services* Includes services performed, workmanship, and material furnished or utilized in the performance of services.

- 1.20** *Stipulated Sum Agreement* A written agreement in which a specific amount is set forth as the total payment for completing the contract (See Contract Sum Contract).
- 1.21** *Subcontractor* is a person, firm or corporation supplying labor and materials or only labor for work at the site of the project for, and under separate contract or agreement with, the Contractor.
- 1.22** *Unit Price Contract* A written contract wherein the County agrees to pay the Contractor a specified amount of money for each unit of work successfully completed as set forth in the contract.
- 1.23** *Unit Prices* A predetermined price for a measurement or quantity of work to be performed within a specific contract. The designated unit price would include all labor materials, equipment or services associated with the measurement or quantity established.
- 1.24** *Working Day* means every day except Saturday, Sunday and holidays recognized by Santa Fe County. Based on a review of weather that may adversely affect the Contractor's ability to effectively prosecute the Work, and the actual Work performed by the Contractor, the County will determine (between the end of the day and noon of the next day) if the County will charge a Working Day. If the Contractor was able to effectively prosecute Work on a critical path item for six or more hours on a Saturday, Sunday or County-recognized Holiday, the County may charge a Working Day.
- 1.25** *Work on (at) the project* is work to be performed at the location of the project, including the transportation of materials and supplies to or from the location of the project by employees of the Contractor and any subcontractor.

2. CONTRACT AND CONTRACT DOCUMENTS

- 2.1** *Entire Agreement.* This Agreement represents the entire contract between the parties and, except as otherwise provided herein, may not be amended, changed, modified, or altered without the written consent of the parties hereto. This Agreement incorporates all of the conditions, agreements, and understandings between the parties concerning the subject matter of this Agreement, and all such conditions, understandings, and agreements have been merged into this written Agreement. No prior condition, agreement, or understanding, verbal or otherwise, of the parties or their agents shall be valid or enforceable unless incorporated in this written Agreement.
- 2.2** *Relationship of Contract Documents.* The Contract Documents are complementary, and any requirement of one Contract Document shall be as binding as if required by all.
- 2.3** *Conflicting Conditions.* Any provisions in any of the Contract Documents which may be in conflict or inconsistent with any of the paragraphs in these General Conditions shall be void to the extent of such conflict or inconsistency.

3. PLANS, SPECIFICATIONS AND ADDENDA

- 3.1 The plans, specifications and addenda, hereinafter enumerated in Article 1 of the Agreement Between County and Contractor for Construction shall form part of this contract and the provisions thereof shall be as binding upon the parties hereto as if they were herein fully set forth. The table of contents, titles, headings, running headlines and marginal notes contained herein and in said documents are solely to facilitate reference to various provisions of the Contract Documents and in no way affect or limit the interpretation of the provisions to which they refer.
- 3.2 Certificates and Documents Incorporated. All certificates and documentation required by the provisions of the Agreement shall be attached to this Agreement at the time of execution, and are hereby incorporated by reference as though set forth in full in this Agreement to the extent they are consistent with its conditions and terms.

4. CONTRACT SECURITY – BONDS

- 4.1 Performance Bond. The Contractor shall furnish a performance bond in an amount at least equal to 100% of the contract sum as security for the faithful performance of this contract. The performance bond and the payment bond may be in one or in separate instruments in accordance with local law.
- 4.2 Payment Bond. The Contractor shall provide payment bond in an amount not less than 100% of the contract sum or in a penal sum not less than that prescribed by state, territorial or local law, as security for the payment of all persons performing labor on the project under this contract, furnishing materials in connection with this contract and all of Contractor's requirements as specified in the Contract Documents. The Payment Bond shall remain in effect until one year after the date when final payment becomes due.
- 4.3 Additional or Substitute Bond. If at any time the County for justifiable cause shall be or become dissatisfied with any surety or sureties, then upon the Performance or Payment Bonds, the Contractor shall within five days after notice from the County so to do, substitute an acceptable bond (or bonds) in such form and sum and signed by such other surety or sureties as may be satisfactory to the County. The premiums on such bond shall be paid by the Contractor. No further payments shall be deemed due nor shall be made until the new surety or sureties shall have furnished such an acceptable bond to the County.
- 4.4 Labor and Material Bond. The Contractor shall provide to the County Labor and Material Bond in an amount equal to the required payments by the Contractor to pay specified subcontractors, laborers, and materials suppliers associated with the project.

5. TERMS AND MEANINGS

Terms used in this Agreement that are defined in the Conditions of the Contract shall have the meanings designated in those Conditions.

- 5.1 **Words and Phrases.** Words, phrases, and abbreviations which have well-known technical or trade meanings used in the Contract Documents shall be used according to such recognized meanings. In the event of a conflict, the more stringent meaning shall govern.
- 5.2 **Gender, Singular/Plural.** Words of any gender used in this Agreement shall be held and construed to include any other gender, and words in the singular number shall be held to include the plural, unless the context otherwise requires.
- 5.3 **Captions and Section Headings.** The captions and section headings contained in this Agreement are for convenience of reference only, and in no way limit, define, or enlarge the terms, scope and conditions of this Agreement.
- 5.4 **Interchangeable Terms.** For purposes of all provisions within this Agreement and all attachments hereto, the terms “Agreement” and “Contract” shall have the same meaning and shall be interchangeable.

6. COMPLIANCE WITH APPLICABLE LAW, CHOICE OF LAW

- 6.1 This Agreement shall be governed exclusively by the provisions hereof and by the laws of the State of New Mexico and applicable ordinances of Santa Fe County.
- 6.2 In performing its obligations hereunder, the Contractor shall comply with all applicable laws, ordinances, and regulations, including Santa Fe County Ordinance 2014-1 (Establishing a Living Wage).
- 6.3 **Minimum Wage Rates.** The Contractor, all subcontractors and sub-subcontractors warrants and agree to will comply with all applicable provisions of the New Mexico Public Works Minimum Wage Act as outlined in the Bid Documents. Wage rates are not applicable to projects costing less than \$60,000.
- 6.4 This Agreement shall be construed in accordance with the substantive laws of the State of New Mexico, without regard to its choice of law rules. Contractor and the County agree that the exclusive forum for any litigation between them arising out of or related to this Agreement shall be federal and state district courts of New Mexico.
- 6.5 Pursuant to 13-1-191, NMSA 1978, reference is hereby made to the criminal laws of New Mexico, including §30-14-1, §30-24-2, and §30-41-1 through 3, NMSA 1978, which prohibit bribes, kickbacks, and gratuities, violation of which constitutes a felony. Further, the Procurement Code, 13-1-28 through 13-1-199, NMSA 1978, imposes civil and criminal penalties for its violation.
- 6.6 **New Mexico Tort Claims Act.** By entering into this Agreement, neither party shall be responsible for liability incurred as a result of the other party’s acts or omissions in connection with this Agreement. Any liability incurred in connection with this Agreement is subject to the immunities and limitations of the New Mexico Tort Claims Act, Sections

41-4-1, et seq., NMSA 1978, as amended. The County and its “public employees” as defined in the New Mexico Tort Claims Act, do not waive sovereign immunity, do not waive any defense and do not waive any limitation of liability pursuant to law. No provision in this Agreement modifies or waives any provision of the New Mexico Tort Claims Act.

- 6.7** Provision Required by Law Deemed Inserted. Each and every provision of law and clause required by law to be inserted in this contract shall be deemed to be inserted herein and the contract shall be read and enforced as though it were included herein, and if through mistake or otherwise any such provision is not inserted, or is not correctly inserted, then upon the application of either party the contract shall forthwith be physically amended to make such insertion or correction.

7. EFFECTIVE DATE AND TERM

- 7.1** This Agreement shall, upon due execution by all parties, become effective in accordance with the Agreement Between County and Contractor for Construction, Article 3 - Effective Date, Time of Commencement and Substantial Completion. This Agreement shall not become effective until: (1) approved by the Santa Fe County Commissioners and/or the County Manager or their designee; and (2) signed by all parties required to sign this Agreement.
- 7.2** This Contract shall achieve Substantial Completion in accordance with the Agreement Between County and Contractor, Article 3 - Effective Date, Time of Commencement and Substantial Completion, unless earlier terminated pursuant to Section 8 (Termination) or 9, (Appropriations and Authorizations) of these General Conditions.

8. TERMINATION

- 8.1** Termination of Agreement for Cause. Either party may terminate the Agreement based upon any material breach of this Agreement by the other party. The non-breaching party shall give the breaching party written notice of termination specifying the grounds for the termination. The termination shall be effective 30 days from the breaching party’s receipt of the notice of termination, during which time the breaching party shall have the right to cure the breach. If, however, the breach cannot with due diligence be cured within 30 days, the breaching party shall have a reasonable time to cure the breach, provided that, within 30 days of its receipt of the written notice of termination, the breaching party began to cure the breach and advised the non-breaching party in writing that it intended to cure.
- 8.2** Termination for Convenience of the County. The County may, in its discretion, terminate this Agreement at any time for any reason by giving the Contractor written notice of termination. The notice shall specify the effective date of termination, which shall not be less than 15 days from the Contractor’s receipt of the notice. The County shall pay the Contractor for acceptable work, determined in accordance with the specifications and standards set forth in this Agreement, performed before the effective date of termination but shall not be liable for any work performed after the effective date of termination.

8.3 Right of the County to Terminate Contract In the event that any of the provisions of this contract are violated by the Contractor, or by any of its subcontractors, the County may serve written notice upon the Contractor and the Surety of its intention to terminate the contract, such notices to contain the reasons for such intention to terminate the contract, and unless within 10 days after the serving of such notice upon the Contractor, such violation or delay shall cease and satisfactory arrangement of correction be made, the contract shall, upon the expiration of said 10 days, cease and terminate. In the event of any such termination, the County shall immediately serve notice thereof upon the Surety and the Contractor and the Surety shall have the right to take over and perform the contract. Provided, however, that if the Surety does not commence performance thereof within 10 days from the date of the mailing to such Surety of notice of termination, the County may take over the Work and prosecute the same to completion by contract or by force account and at the expense of the Contractor and the Contractor and its Surety shall be liable to the County for any excess cost occasioned the County thereby, and in such event the County may take possession of and utilize in completing the work, such materials, appliances, and plant as may be on the site of the Work.

9. APPROPRIATIONS AND AUTHORIZATIONS

This Agreement is contingent upon sufficient appropriations and authorizations being made for performance of this Agreement by the Santa Fe County Board of County Commissioners and/or, if state funds are involved, the New Mexico State Legislature. If sufficient appropriations and authorizations are not made in this or future fiscal years, this Agreement shall terminate upon written notice by the County to the Contractor. Such termination shall be without penalty to the County, and the County shall have no duty to reimburse the Contractor for expenditures made in the performance of this Agreement. The County is expressly not committed to expenditure of any funds until such time as they are programmed, budgeted, encumbered and approved for expenditure by the County. The County's decision as to whether sufficient appropriations and authorizations have been made for the fulfillment of this Agreement shall be final and not subject to challenge by the Contractor in any way or forum, including a lawsuit.

10. AMENDMENTS – CHANGE ORDERS

Contract Documents may be amended by a Change Order (Exhibit I) to allow for additions, deletions, and revision as specified in Article 2 (the Work) of this Agreement.

11. INDEMNIFICATION

11.1 The Contractor shall defend, indemnify, and hold harmless the County and its elected officials, agents, and employees from any losses, liabilities, damages, demands, suits, causes of action, judgments, costs or expenses (including but not limited to court costs and attorneys' fees) resulting from or directly or indirectly arising out of the Contractor's performance or non-performance of its obligations under this Agreement, including but not limited to the Contractor's breach of any representation or warranty made herein.

- 11.2** The Contractor agrees that the County shall have the right to control and participate in the defense of any such demand, suit, or cause of action concerning matters that relate to the County and that such suit will not be settled without the County's consent, such consent can not to be unreasonably withheld. If a conflict exists between the interests of the County and the Contractor in such demand, suit, or cause of action, the County may retain its own counsel to represent the County's interest.
- 11.3** The Contractor's obligations under this section shall not be limited by the provisions of any insurance policy the Contractor is required to maintain under this Agreement.

12. AGGRIEVEMENT PROCEDURE DURING CONTRACT ADMINISTRATION

- 12.1** Any claims, disputes, or other matters in question between the Contractor and the County, except those which have been waived by the making or acceptance of final payment as provided in Paragraph 6.2 of the Agreement Between Santa Fe County and Contractor for Construction, shall be presented in the form of a written request accompanied by supporting data to the County for formal decision, with a copy to the other party. Such formal decision of the County is binding upon the Contractor and the County unless either or both notify each other and the County in writing within 15 days of their receipt of the decision that they are unwilling to abide by the County's decision, are thereby aggrieved in connection with the decision, and are separately exercising such rights as either may have under the Contract Documents or by law and regulation. If the County fails to provide a written decision or a reasonable schedule to issue a written decision within 10 days after the County or the Contractor has presented its request, that party may consider itself aggrieved and may proceed to exercise its rights.
- 12.2** A settlement agreement signed by the County and the Contractor shall supersede and cancel any other dispute resolution proceedings regarding the same matter.
- 12.3** Unless work is stopped or payment withheld in accordance with the conditions of this contract, or unless otherwise agreed in writing, the Contractor shall carry on the Work and maintain its progress during any dispute resolution proceedings, and the County shall continue to make payments to the Contractor in accordance with the Contract Documents.

13. DISPUTE RESOLUTION

- 13.1** Either County or Contractor may request mediation pursuant to the New Mexico Public Works Mediation Act, 13-4C-1, NMSA 1978, of any claim before such decision become final and binding. The request for mediation shall be submitted in writing to the other party. Timely submission of the request shall stay the effect of Paragraph 12.1.
- 13.2** County and Contractor shall participate in the mediation process in good faith. The process shall be completed within 60 days of filing of the request. The mediation shall be governed by the rules for mediation pursuant to the New Mexico Public Works Mediation Act.

13.3 If the dispute is not resolved by mediation, the dispute shall be resolved through litigation in the district court. The parties agree that the exclusive forum for such litigation shall be the State of New Mexico District Court for the First Judicial District at Santa Fe, New Mexico. Contractor irrevocably consents to the jurisdiction of said Court and agrees to accept service of a summons and complaint by mail or commercial courier service in accordance with Rule 1-004(E) (3) NMRA.

14. INSURANCE

14.1 The Contractor shall not commence work under this contract until it has obtained all the insurance required under this paragraph and such insurance has been approved by the County, nor shall the Contractor allow any subcontractor to commence work on its subcontract until the insurance required of the subcontractor has been so obtained and approved.

14.2 Proof of Carriage of Insurance. The Contractor shall furnish the County with certificates showing the type, amount, class of operations covered, effective dates and date of expiration of policies. Such certificates shall also contain substantially the following statement: "Should any of the above described policies be cancelled before the expiration date thereof, notice will be delivered in accordance with the policy provisions".

14.3 General Conditions. The Contractor shall submit evidence of insurance as is required herein. Policies of insurance shall be written by companies authorized to write such insurance in New Mexico.

14.4 General Liability Insurance, Including Automobile. The Contractor shall procure and maintain during the life of this Agreement a comprehensive general liability and automobile insurance policy with liability limits in amounts not less than \$1,000,000.00 combined single limits of liability for bodily injury, including death, and property damage for any one occurrence. Said policies of insurance shall include coverage for all operations performed for the County by the Contractor; coverage for the use of all owned, non-owned, hired automobiles, vehicles and other equipment, both on and off work; and contractual liability coverage under which this Agreement is an insured contract. The Santa Fe County shall be a named additional insured on the policy.

14.5 Subcontractor's Public Liability and Property Damage Insurance and Vehicle Liability Insurance. The Contractor shall require each of its subcontractors to procure and to maintain during the life of its subcontract, Subcontractor's Public Liability and Property Damage Insurance and Vehicle Liability Insurance of the type and in the amounts specified in 14.4 above.

14.6 Workers' Compensation Insurance. The Contractor shall comply with the provisions of the Workers' Compensation Act, 52-1-1 to 52-1-70, NMSA 1978. The Contractor shall procure and shall maintain during the life of this contract Workmen's Compensation Insurance as required by applicable state law for all of its employees to be engaged in work at the site of the project under this contract and, in case of any such work sublet, the

Contractor shall require the subcontractor similarly to provide Workmen's Compensation Insurance for all of the latter's employees to be engaged in such work unless such employees are covered by the protection afforded by the Contractor's Workmen's Compensation Insurance. In case any class of employees engaged in hazardous work on the project under this contract is not protected under the Workmen's Compensation law, the Contractor shall provide and shall cause each subcontractor to provide adequate employer's liability insurance for the protection of such of its employees as are not otherwise protected.

- 14.7** Scope of Insurance and Special Hazards. The insurance required under subparagraphs 14.4 and 14.5 hereof shall provide adequate protection for the Contractor and its subcontractors, respectively, against damage claims which may arise from operations under this contract, whether such operations be by the insured or by anyone directly or indirectly employed by him and, also against any of the special hazards which may be encountered in the performance of this contract.
- 14.8** Builder's Risk Insurance (Fire and Extended Coverage). Until the project is completed and accepted by the County, the County, or Contractor at the County's option is required to maintain Builder's Risk Insurance (fire and extended coverage) on a 100% completed value basis on the insurable portion of the project for the benefit of the County, the Contractor, subcontractors as their interests may appear. The Contractor shall not include any costs for Builder's Risk Insurance (fire and extended coverage) premiums during construction unless the Contractor is required to provide such insurance; however, this provision shall not release the Contractor from its obligation to complete, according to plans and specifications, the project covered by the contract, and the Contractor and his Surety shall be obligated to full performance of the Contractor's undertaking.
- 14.9** Increased Limits. If, during the life of this Agreement, the New Mexico State Legislature increases the maximum limits of liability under the Tort Claims Act (NMSA 1978, Sections 41-4-1 through 41-4-29, as amended), the Contractor shall increase the maximum limits of any insurance required herein.
- 14.10** Additional insured. Santa Fe County will be listed as an additional insured on all policies, and proof of coverage must be provided before work begins. Contractor shall maintain adequate insurance in at least the maximum amounts which the County could be liable under the New Mexico Tort Claims Act. It is the sole responsibility of the Contractor to be in compliance with the law.

15. INDEPENDENT CONTRACTOR

- 15.1** The Contractor and the Contractor's agents and employees are independent contractors performing professional and technical services for the County and are not employees of the County. The Contractor and the Contractor's agents and employees shall not accrue leave, retirement, insurance, bonding, use of County's vehicles, or any other benefits afforded to employees of the County as a result of this Agreement.

15.2 The Contractor shall not subcontract any portion of the services to be performed under this Agreement without prior written approval of the County.

15.3 The Contractor shall maintain detailed time records which indicate the date, time and nature of services rendered. These records shall be subject to inspection by the County and the State Auditor. The County shall have the right to audit billings both before and after payment. Payment under this Agreement shall not foreclose the right of the County to recover excessive illegal payments.

16. CONFLICT OF INTEREST OF OFFICERS OR EMPLOYEES OF THE LOCAL JURISDICTION, MEMBERS OF THE LOCAL GOVERNING BODY, OR OTHER PUBLIC OFFICIALS

16.1 No officer or employee of the local jurisdiction or its designees or agents, no member of the governing body, and no other public official of the locality who exercises any function or responsibility with respect to this contract, during its tenure or for one year thereafter, shall have any interest, direct or indirect, in any contract or subcontract, or the proceeds thereof, for work to be performed. Further, the Contractor shall cause to be incorporated in all subcontracts the language set forth in this paragraph prohibiting conflict of interest.

16.2 No official of the County who is authorized in such capacity and on behalf of the County to negotiate, make, accept or approve, or to take part in negotiating, making accepting or approving any architectural, engineering, inspection, construction or material supply contract or any subcontract in connection with the construction of the project, shall become directly or indirectly interested personally in this contract or in any part hereof. No officer, employee, architect, attorney, engineer or inspector of or for the County who is authorized in such capacity and on behalf of the County to exercise any legislative, executive, supervisory or other similar functions in connection with the construction of the project, shall become directly or indirectly interested personally in this contract or in any part thereof, any material supply contract, subcontract, insurance contract, or any other contract pertaining to the project.

16.3 The Contractor warrants that the Contractor presently has no interest and shall not acquire any interest, direct or indirect, which would conflict in any manner or degree with the performance or services required under this Agreement.

17. ASSIGNMENT

17.1 The Contractor shall not assign or transfer any interest in this Agreement or assign any claims for money due or to become due under this Agreement without the advance written approval of the County. Any attempted assignment or transfer without the County's advance written approval shall be null and void and without any legal effect.

18. SUBCONTRACTING

18.1 The Contractor shall not subcontract or delegate any portion of the services to be

performed under this Agreement without the advance written approval of the County. Any attempted subcontracting or delegating without the County's advance written approval shall be null and void and without any legal effect.

- 18.2** Contractor shall provide to the County a listing of subcontractors within ten days of the contract award.
- 18.3** Contractor shall adhere to all provisions of the Subcontractor's Fair Practices Act 13-4-31 to 13-4-42, NMSA 1978.
- 18.4** Contractor shall provide to the County completed Non-Collusion Affidavit of Subcontractor form and Certification of Subcontractor Regarding Equal Employment Opportunity form for all subcontractors listed.
- 18.5** The Contractor shall not award any work to any subcontractor without prior written approval of the County, which approval will not be given until the Contractor submits to the County a written statement concerning the proposed award to the subcontractor, which statement shall contain such information as the County may require.
- 18.6** The Contractor shall be as fully responsible to the County for the acts and omissions of its subcontractors, and of persons either directly or indirectly employed by them, as they are for the acts and omissions of persons directly employed by them.
- 18.7** The Contractor shall cause appropriate provisions to be inserted in all subcontracts relative to the work to bind subcontractors to the Contractor by the terms of the General Conditions and other contract documents insofar as applicable to the work of subcontractors and to give the Contractor the same power as regards terminating any subcontract that the County may exercise over the Contractor under any provision of the Contract Documents.
- 18.8** Nothing contained in this contract shall create any contractual relation between any subcontractor and the County.
- 18.9** All work performed for Contractor by a subcontractor or supplier will be pursuant to an appropriate written agreement between Contractor and the subcontractor or supplier which specifically binds the subcontractor or supplier to the applicable terms and conditions of the Contract Documents for the benefit of County. Any contract between Contractor and a subcontractor or supplier shall provide that any remedy or claim for nonpayment of sums due or owing to subcontractor or supplier or services performed or materials provided is against Contractor and not County, subject to any remedy or rights subcontractor or supplier may have under the terms of the Contractor's Performance Bond and Section 13-4- 19, NMSA 1978, the New Mexico Little Miller Act.

19. PERSONNEL

- 19.1** All work performed under this Agreement shall be performed by the Contractor or under its supervision.

19.2 The Contractor represents that it has, or will secure at its own expense, all personnel required to discharge its obligations under this Agreement. Such personnel (i) shall not be employees of or have any contractual relationships with the County and (ii) shall be fully qualified and licensed or otherwise authorized or permitted under federal, state, and local law to perform such work.

20. NOTICES

20.1 Any notice required to be given to either party by this Agreement shall be in writing and shall be delivered in person, by courier service or by U.S. mail, either first class or certified, return receipt requested, postage prepaid, as follows:

To the County: Santa Fe County Public Works
 Attn:
 P.O. Box 276
 Santa Fe, New Mexico 87504-0276

To the Contractor: Contractor Name
 Attention:
 Address
 City, State, Zip Code

20.2 Nothing herein contained shall preclude the giving of any such written notice by personal service. The address to which notices shall be mailed to either party may be changed by written notice given by such party to the other as hereinabove provided.

21. RELEASE

The Contractor, upon final payment of the amounts due under this Agreement, releases the County, the County’s officers and employees from all liabilities and obligations arising from or under this Agreement, including, without limitation, all damages, losses, costs, liability, and expenses, including, without limitation, attorney’s fees and costs of litigation that the Contractor may have.

22. WAIVER

No provision of this Agreement shall be deemed to have been waived by either party unless such waiver be in writing signed by the party making the waiver and addressed to the other party; nor shall any custom or practice which may evolve between the parties in the administration of the terms hereof be construed to waive or lessen the right of either party to insist upon performance by the other party in strict accordance with the terms hereof. Further, the waiver by any party of a breach by the other party of any term, covenant, or condition hereof shall not operate as a waiver of any subsequent breach of the same or any other term, covenant, or condition thereof.

CONDITIONS OF THE WORK

1. ADDITIONAL INSTRUCTIONS AND DETAIL DRAWINGS

- 1.1** The Contractor will be furnished additional instructions and detail drawings as necessary to carry out the Work. The additional drawings and instructions supplied to the Contractor will coordinate with the Contract Documents and will be so prepared that they can be reasonably interpreted as part thereof. The Contractor shall carry out the Work in accordance with the additional detail drawings and instructions. The Contractor and the County will prepare jointly (a) a schedule, fixing the dates at which special detail drawings will be required, such drawings, if any, to be furnished by the County in accordance with the schedule, and (b) a schedule fixing the respective dates for the submission of shop drawings, the beginning of manufacture, testing and installation of materials, supplies and equipment, and the completion of the various parts of the work; each schedule to be subject to change from time to time in accordance with progress of the Work.

2. SHOP OR SETTING DRAWINGS

- 2.1** The Contractor shall submit promptly to the County two copies of each shop or setting drawing prepared in accordance with the schedule predetermined as aforesaid. After examination of such drawings by the County and the return thereof, the Contractor shall make such corrections to the drawings as have been indicated and shall furnish the County with two corrected copies. If requested by the County the Contractor must furnish additional copies. Regardless of corrections made in or approval given to such drawings by the County, the Contractor will be responsible for the accuracy of such drawings and for their conformity to the Plans and Specifications, unless the Contractor notifies the County in writing of any deviations at the time the Contractor furnishes such drawings.

3. MATERIALS, SERVICES AND FACILITIES

- 3.1** It is understood that except as otherwise specifically stated in the Contract Documents, the Contractor shall provide and pay for all materials, labor, tools, equipment, water, light, power, transportation, superintendence, temporary construction of every nature, and all other services and facilities of every nature whatsoever necessary to execute, complete, and deliver the work within the specified time.
- 3.2** Any work necessary to be performed after regular working hours, on Sundays or legal holidays, shall be performed without additional expense to the County.

4. CONTRACTOR'S TITLE TO MATERIALS

- 4.1** No materials or supplies for the work shall be purchased by the Contractor or by any subcontractor subject to any chattel mortgage or under a conditional sale contract or other agreement by which an interest is retained by the seller. The Contractor warrants that it has good title to all materials and supplies used by him/her in the work, free from all liens,

claims or encumbrances.

5. INSPECTION AND TESTING OF MATERIALS

5.1 All materials and equipment used in the construction of the project shall be subject to adequate inspection and testing in accordance with accepted standards. The laboratory or inspection agency shall be selected by the County. The County will pay for all laboratory inspection service direct, and not as a part of the Contract.

5.2 Materials of construction, particularly those upon which the strength and durability of the structure may depend, shall be subject to inspection and testing to establish conformance with specifications and suitability for uses intended.

6. "OR EQUAL" CLAUSE

6.1 Whenever a material, article or piece of equipment is identified on the plans or in the specifications by reference to manufacturers' or vendors' names, trade names, catalogue numbers, etc., it is intended merely to establish a standard; and, any material, article, or equipment or other manufacturers and vendors which will perform adequately the duties imposed by the general design will be considered equally acceptable provided the material, article, or equipment so proposed, is, in the opinion of the County, of equal substance and function. It shall not be purchased or installed by the Contractor without the County's written approval.

7. PATENTS

7.1 The Contractor shall hold and save the County and its officers, agents, servants, and employees harmless from liability of any nature or kind, including cost and expenses for, or on account of, any patented or unpatented invention, process, article, or appliance manufactured or used in the performance of the Contract, including its use by the County, unless otherwise specifically stipulated in the Contract Documents.

7.2 License and/or Royalty Fees for the use of a process which is authorized by the County of the project must be reasonable, and paid to the holder of the patent, or its authorized licensee, direct by the County and not by or through the Contractor.

7.3 If the Contractor uses any design, device or materials covered by letters, patent or copyright, the Contractor shall provide for such use by suitable agreement with the County of such patented or copyrighted design, device or material. It is mutually agreed and understood, that, without exception, the Contract prices shall include all royalties or costs arising from the use of such design, device or materials, in any way involved in the work. The Contractor and/or its Sureties shall indemnify and save harmless the County of the project from any and all claims for infringement by reason of the use of such patented or copyrighted design, device or materials, or any trademark or copyright in connection with work agreed to be performed under this Contract, and shall indemnify the County for any cost, expense or damage which it may be obliged to pay by reason of such infringement at

any time during the prosecution of the work or after, completion of the work.

8. SURVEYS, PERMITS AND REGULATIONS

- 8.1 Unless otherwise expressly provided for in the Specifications, the County will furnish to the Contractor all surveys necessary for the execution of the work.
- 8.2 Unless otherwise expressly provided for in the Specifications, the Contractor shall procure and pay all permits, licenses and approvals necessary for the execution of this contract.
- 8.3 The Contractor shall comply with all laws, ordinances, rules, orders, and regulations relating to performance of the Work, the protection of adjacent property, and the maintenance of passageways, guard fences or other protective facilities.

9. CONTRACTOR’S OBLIGATIONS

- 9.1 The Contractor shall and will, in good workmanlike manner, do and perform the Work and furnish all supplies and materials, machinery, equipment, facilities and means, except as herein otherwise expressly specified, necessary or proper to perform and complete all the Work. within the time herein specified. The Contractor will perform the Work in accordance with the provisions of this contract and said Specifications and in accordance with the plans and drawings covered by this contract any and all supplemental plans and drawings, and in accordance with the directions of the County as given from time to time during the progress of the work. The Contractor shall furnish, erect, maintain, and remove such construction plans and such temporary works as may be required.
- 9.2 The Contractor shall observe, comply with, and be subject to all terms, conditions, requirements, and limitations of this contract and specifications, and shall do, carry on, and complete the entire work to the satisfaction of the County.

10. WEATHER CONDITIONS

- 10.1 In the event of temporary suspension of work, or during inclement weather, or whenever the County shall direct, the Contractor will, and will cause its subcontractors to protect carefully its and their work and materials against damage or injury from the weather. If, in the opinion of the County, any work or materials shall have been damaged or injured by reason of failure on the part of the Contractor or any of its subcontractors so to protect its work, such materials shall be removed and replaced at the expense of the Contractor.

11. PROTECTION OF WORK AND PROPERTY-EMERGENCY

- 11.1 The Contractor shall at all times safely guard the County’s property from injury or loss. The Contractor shall at all times safely guard and protect its own work, and that of adjacent property from damage. The Contractor shall replace or make good any such damage, loss or injury unless such is caused directly by errors contained in this contract or by the County.

11.2 In case of an emergency which threatens loss or injury of property, and/or safety of life, the Contractor will be allowed to act, without previous instructions from the County, in a diligent manner. The Contractor shall notify the County immediately thereafter. Any claim for compensation by the Contractor due to such extra work shall be promptly submitted to the County for approval.

11.3 Where the Contractor has not taken action but has notified the County of an emergency threatening injury to persons or to damage to the work or any adjoining property, the Contractor shall act as instructed or authorized by the County.

11.4 The amount of reimbursement claimed by the Contractor on account of any emergency action shall be determined in the manner provided in Paragraph 15 of these Conditions of the Work.

12. INSPECTION

12.1 The authorized representatives and agents of the County shall be permitted to inspect the Work, materials, payrolls, records of personnel, invoices of materials, and other relevant data and records.

13. REPORTS, RECORDS AND DATA

13.1 The Contractor shall submit to the County such schedule of quantities and costs, progress schedules, payrolls, reports, estimates, records and other data as the County may request.

14. SUPERINTENDENT BY CONTRACTOR

14.1 At the site of the Work the Contractor shall employ a construction superintendent or foreman who shall have full authority to act for the Contractor. It is understood that such representative shall be acceptable to the County and shall be one who can be continued in that capacity for the particular job involved unless he/she ceases to be on the Contractor's payroll.

15. CHANGES IN THE WORK

15.1 No changes in the Work shall be made without having prior written approval of the County. Charges or credits for the Work shall be determined by one or more, or a combination of the following methods:

- A. Unit bid prices previously approved.
- B. An agreed contract sum.
- C. The actual cost of:
 - 1) Labor, including foremen;
 - 2) Materials entering permanently into the work;
 - 3) The County's or rental cost of construction equipment during the time

- of use on the extra work;
 - 4) Power and consumable supplies for the operation of power equipment;
 - 5) Insurance;
 - 6) Social Security and old age and unemployment contributions.
- D. To the costs for changes in work a fixed fee will be added to be agreed upon but not to exceed 10% of the actual cost of the work. The fee shall be compensation to cover the cost of supervision, overhead, bond, profit and any other general expenses.

16. EXTRAS

16.1 Without invalidating this contract, the County may order extra work or make changes by altering, adding to or deducting from the work, the contract sum being adjusted accordingly, and the consent of the Surety being first obtained where necessary or desirable. All the work of the kind bid upon shall be paid for at the price stipulated in the proposal, and no claims for any extra work or materials shall be allowed unless the work is ordered in writing by the County and the price is stated in such order.

17. INSPECTION OF SERVICES

17.1 The Contractor shall provide and maintain an inspection system acceptable to the County covering. Complete records of all inspection work performed by the Contractor shall be maintained and made available to the County during contract performance and for as long afterwards as this contract requires.

17.2 The County has the right to inspect and test all services called for by this contract, to the extent practicable at all times and places during the term of this contract. The County shall perform inspections and tests in a manner that will not unduly delay the Work.

17.3 If the County performs inspections or tests on the premises of the Contractor or a subcontractor, the Contractor shall furnish, and shall require subcontractors to furnish, at no increase in contract price, all reasonable facilities and assistance for the safe and convenient performance of these duties.

17.4 If any of the services do not conform with the contract Documents, the County may require the Contractor to perform the services again in conformity with Contract Documents, at no increase in the contract sum. When the defects in services cannot be corrected by re-performance, the County may require the Contractor to take necessary action to ensure that future performance conforms to contract requirements; and reduce the contract sum to reflect the reduced value of the services performed.

17.5 If the Contractor fails to promptly perform the services again or to take the necessary action to ensure future performance in conformity with Contract Documents, the County may by contract or otherwise, perform the services and charge to the Contractor any cost incurred by the County that is directly related to the performance of such service, or terminate the Contract for default.

18. CORRECTION OF WORK

18.1 All work, all materials, whether incorporated in the work or not, all processes of manufacture, and all methods of construction shall be at all times and places subject to the inspection of the County who shall be the final judge of the quality and suitability of the work, materials, processes of manufacture, and methods of construction for the purposes for which they are used. Should they fail to meet their approval they shall be forthwith reconstructed, made good, replaced and/or corrected, as the case may be, by the Contractor at its own expense. Rejected material shall immediately be removed from the site. If, in the opinion of the County, it is undesirable to replace any defective or damaged materials or to reconstruct or correct any portion of the work injured or not performed in accordance with the Contract Documents, the compensation to be paid to the Contractor hereunder shall be reduced by such amount as in the judgment of the County shall be equitable.

19. WARRANTY OF CONSTRUCTION

19.1 In addition to any other warranties in this contract, the Contractor warrants the Work performed under this contract conforms to the Contract Documents and is free of any defect in equipment, material, or design furnished, or workmanship performed by the Contractor or any subcontractor or supplier at any tier.

19.2 This warranty shall continue for a period of one (1) year from the date of final acceptance of the work. If the County takes possession of any part of the work before final acceptance, this warranty shall continue for a period of one (1) year from the date the County takes possession.

19.3 The Contractor shall remedy at the Contractor's expense any failure to conform, or any defect. In addition, the Contractor shall remedy at the Contractor's expense any damage to County-owned or controlled real or personal property, when that damage is the result of the Contractor's failure to conform to Contract Documents or any defect of equipment, material, workmanship, or design furnished.

19.4 The Contractor shall restore any work damaged in fulfilling the terms and conditions of this clause. The Contractor's warranty with respect to work repaired or replaced will run for one year from the date of repair or replacement.

19.5 The County shall notify the Contractor, in writing, within a reasonable time after the discovery of any failure, defect, or damage.

19.6 If the Contractor fails to remedy any failure, defect, or damage within a reasonable time after receipt of notice, the County shall have the right to replace, repair, or otherwise remedy the failure, defect, or damage at the Contractor's expense.

19.7 With respect to all warranties, express or implied, from subcontractors, manufacturers, or suppliers for work performed and materials furnished under this Contract, the Contractor

shall obtain all warranties that would be given in normal commercial practice; require all warranties to be executed, in writing, for the benefit of the County, if directed by the County; and, enforce all warranties for the benefit of the County, if directed by the County.

19.8 In the event the Contractor's warranty under subparagraph 19.4 of this clause has expired, the County may bring suit at its expense to enforce a subcontractor's, manufacturer's, or supplier's warranty.

19.9 Unless a defect is caused by the negligence of the Contractor or subcontractor or supplier at any tier, the Contractor shall not be liable for the repair of any defects of material or design furnished by the County nor for the repair of any damage that results from any defect in County-furnished material or design.

19.10 This warranty shall not limit the County's rights under the Inspection and Acceptance clause of this contract with respect to latent defects, gross mistakes, or fraud.

20. SUBSURFACE CONDITIONS FOUND DIFFERENT

20.1 Should the Contractor encounter sub-surface and/or latent conditions at the site materially differing from those shown on the Plans or indicated in the Specifications, the Contractor shall immediately give notice to the /County of such conditions before they are disturbed. The County will thereupon promptly investigate the conditions, and if they find that they materially differ from those shown on the Plans or indicated in the Specifications, they will at once make such changes in the Plans and/or Specifications as they may find necessary, any increase or decrease of cost resulting from such changes to be adjusted in the manner provided in Paragraph 15 above.

21. CLAIMS FOR EXTRA COST

21.1 No claim for extra work or cost shall be allowed unless the same was done in pursuance of a written order of the County and approved by the County, as aforesaid, and the claim presented with the first estimate after the changed or extra work is done. When the Work is performed under the terms of General Conditions, the Contractor shall furnish satisfactory bills, payrolls and vouchers covering all items of cost and when requested by the County, giving the County access to accounts relating thereto.

22. CONSTRUCTION SCHEDULE AND PERIODIC ESTIMATES

22.1 Immediately after execution and delivery of this contract, and before the first partial payment is made, the Contractor shall deliver to the County an estimated construction progress schedule in a form satisfactory to the County, showing the proposed dates of commencement and completion of each of the various subdivisions of work required under the Contract Documents and the anticipated amount of each monthly payment that will become due to the Contractor in accordance with the progress schedule. The Contractor shall also furnish on forms to be supplied by the County (a) a detailed estimate giving a complete breakdown of the Contract sum and (b) periodic itemized estimates of work done

for the purpose of making partial payments thereof. The costs employed in making up any of these schedules will be used only for determining the basis of partial payments and will not be considered as fixing a basis for additions to or deductions from the contract sum.

22.2 Schedule

The Contractor shall, within five days after the effective date of Notice to Proceed, prepare and submit five copies of a progress schedule covering project operations for the contract period. This progress schedule shall be of the type generally referred to as a Critical Path Method (CPM), Critical Path Schedule (CPS), and Critical Path Analysis (CPA), and other similar designations. The CPM shall be used to control the timing and sequences of the project. The Work shall be done in accordance with the CPM Planning and Scheduling. A written statement of explanation shall be submitted with the progress schedule. All costs incurred by the contractor to implement the CPM shall be borne by the Contractor .

23. ASSIGNMENTS

23.1 The Contractor shall not assign the whole or any part of this contract or any monies due or to become due hereunder without written consent of the County. In case the Contractor assigns all or any part of any monies due or to become due under this contract, the instrument of assignment shall contain a clause substantially to the effect that it is agreed that the right of the assignee in and to any monies due or to become due to the Contractor shall be subject to prior claims of all persons, firms and corporations of services rendered or materials supplied for the performance of the Work.

24. MUTUAL RESPONSIBILITY OF CONTRACTORS

24.1 If, through acts of neglect on the part of the Contractor, any other contractor or any subcontractor shall suffer loss or damage on the work, the Contractor agrees to settle with such other contractor or subcontractor by agreement or arbitration if such other contractor or subcontractors will so settle. If such other contractor or subcontractor shall assert any claim against the County on account of any damage alleged to have been sustained, the County shall notify the Contractor, who shall indemnify and save harmless the County against any such claim.

25. SEPARATE CONTRACT

25.1 The Contractor shall coordinate its operations with those of other contractors. Cooperation will be required in the arrangement for the storage of materials and in the detailed execution of the Work. The Contractor, including its subcontractors, shall keep informed of the progress and the detail work of other contractors and shall notify the County immediately of lack of progress or defective workmanship on the part of other contractors. Failure of a contractor to keep informed of the Work progressing on the site and failure to give notice of lack of progress or defective workmanship by others shall be construed as acceptance by the Contractor of the status of the Work as being satisfactory for proper coordination with its own work.

26. COUNTY'S AUTHORITY

26.1 The County shall give all orders and directions contemplated under this contract relative to the execution of the Work. The County shall determine the amount, quality, acceptability, and fitness of the several kinds of work and materials which are to be paid for under this contract and shall decide all questions which may arise in relation to the Work and the construction thereof. The County's estimates and decisions shall be final and conclusive, except as herein otherwise expressly provided. In case any question shall arise between the parties hereto relative to said contract or specifications, the determination or decision of the County shall be a condition precedent to the right of the Contractor to receive any money or payment for the Work.

26.2 The County shall decide the meaning and intent of any portion of the specifications and of any plans or drawings where the same may be found obscure or be in dispute. Any differences or conflicts in regard to their work which may arise between the Contractor under this contract and other contractors performing work for the County shall be adjusted and determined by the /County.

27. STATED ALLOWANCES

27.1 It is understood that Contractor has included in its proposal for the contract sum all allowances including Allowed Materials. The Contractor shall purchase the Allowed Materials as directed by the County on the basis of the lowest and best bid of at least three competitive bids. If the actual sum for purchasing the Allowed Materials is more or less than the Cash Allowance, the contract sum shall be adjusted accordingly. The adjustment in contract price shall be made on the basis of the purchase price without additional charges for overhead, profit, insurance or any other incidental expenses. The cost of installation of the Allowed Materials shall be included in the applicable sections of this contract.

28. USE OF PREMISES AND REMOVAL OF DEBRIS

28.1 The Contractor expressly undertakes at its own expense:

- A. to take every precaution against injuries to persons or damage to property;
- B. to store its apparatus, materials, supplies and equipment in such orderly fashion at the site of the Work as will not unduly interfere with the progress of its work or the work of any other subcontractors;
- C. to place upon the Work or any part thereof only such loads as are consistent with the safety of the portion of the Work;
- D. to clean up frequently all refuse, rubbish, scrap materials, and debris caused by its operations, to the end that at all times the site of the Work shall present a neat, orderly and workmanlike appearance;
- E. before final payment to remove all surplus material, false-work, temporary structures, including foundations thereof, plant of any description and debris of every nature resulting from its operations, and to put the site in a neat, orderly condition.

- F. to effect all cutting, fitting or patching of its work required to make the same to conform to the plans and specifications and, except with the consent of the County, not to cut or otherwise alter the work of any other contractor.

29. QUANTITIES OF ESTIMATE

- 29.1 Wherever the estimated quantities of work to be done and materials to be furnished under this contract are shown in any of the documents including the proposal, they are given for use in comparing bids and the right is especially reserved except as herein otherwise specifically limited, to increase or diminish them as may be deemed reasonably necessary or desirable by the County to complete the Work, and such increase or diminution shall in no way void this contract, nor shall any such increase or diminution give cause for claims or liability for damages.

30. LANDS AND RIGHTS-OF-WAY

- 30.1 Prior to the start of construction, the County shall obtain all lands and rights-of-way necessary for the carrying out and completions of the Work.

31. GENERAL GUARANTY

- 31.1 Neither the final certificate of payment nor any provision in the Contract Documents, nor partial or entire occupancy of the premises by the County, shall constitute an acceptance of work not done in accordance with the Contract Documents or relieve the Contractor of liability in respect to any express warranties or responsibility for faulty materials or workmanship. The Contractor shall remedy any defects in the work and pay for any damage to other work resulting therefrom, which shall appear within a period of one year from the date of final acceptance of the Work unless a longer period is specified. The County will give notice of observed defects with reasonable promptness.

32. PROTECTION OF LIVES AND HEALTH

- 32.1 The Contractor shall exercise proper precaution at all times for the protection of persons and property and shall be responsible for all damages to persons or property, either on or off the site, which occur as a result of its prosecution of the work. The safety provisions of applicable laws and building and construction codes shall be observed and the Contractor shall take or cause to be taken, such additional safety and health measures as the County may determine to be reasonably necessary.

33. INTEREST OF MEMBER

- 33.1 No member of Santa Fe Board of County Commissioners shall be admitted to any share or part of this contract or to any benefit that may arise therefrom.

34. OTHER PROHIBITED INTERESTS

34.1 No official of the County who is authorized in such capacity and on behalf of the County to negotiate, make, accept or approve, or to take part in negotiating, making accepting or approving any architectural, engineering, inspection, construction or material supply contract or any subcontract in connection with the construction of the project, shall become directly or indirectly interested personally in this contract or in any part hereof. No officer, employee, architect, attorney, engineer or inspector of or for the County who is authorized in such capacity and on behalf of the County to exercise any legislative, executive, supervisory or other similar functions in connection with the construction of the project, shall become directly or indirectly interested personally in this contract or in any part thereof, any material supply contract, subcontract, insurance contract, or any other contract pertaining to the project.

35. USE AND OCCUPANCY PRIOR TO ACCEPTANCE BY COUNTY

35.1 The Contractor agrees to the use and/or occupancy of a portion or unit of the project before formal acceptance by the County, provided the County:

- A. Secures written consent of the Contractor except in the event, in the opinion of the County, the Contractor is chargeable with unwarranted delay in final cleanup of punch list items or other contract requirements.
- B. Secures endorsement from the insurance carrier and consent of the surety permitting occupancy of the building or use of the project during the remaining period of construction.
- C. When the project consists of more than one building, and one of the buildings is occupied, secures permanent fire and extended coverage insurance, including a permit to complete construction. Consent of the surety must also be obtained.

ATTACHMENT A

BID SHEETS

ATTACHMENT B
ADDENDA & MODIFICATIONS

EXHIBIT A
PROJECT MANUAL

EXHIBIT B

TECHNICAL SPECIFICATIONS AS LISTED IN PLAN SET

EXHIBIT C

LABOR AND MATERIAL PAYMENT BOND

KNOW ALL MEN BY THESE PRESENT, THAT WE _____
_____ as PRINCIPAL hereinafter called the “PRINCIPAL” and
_____ as SURETY hereinafter called the “SURETY”, are held and
firmly bound unto Santa Fe County, a Political Subdivision of the State of New Mexico as OBLIGEE
hereinafter called the “COUNTY”, for the use and benefit of any claimants as herein below defined, in
the amount of _____ (\$.) dollars for the payment whereof
PRINCIPAL and SURETY bind themselves, their heirs, executors, administrators, successors, and
assigns, jointly and severally, firmly by these presents.

WHEREAS, the PRINCIPAL has a written contract dated _____, 2025, with the
COUNTY for the Bid Name in Santa Fe County, New Mexico, which must be constructed in accordance
with drawings and specifications which contract is referenced and made a part hereof, and is hereinafter
referred to as the “Contract.”

NOW, THEREFORE, THE CONDITION OF THIS OBLIGATION is such that, if PRINCIPAL shall
promptly make payment to all claimants as hereinafter defined, for all labor and material used or reasonably
required for use in the performance of the Contract, then this obligation shall be void; otherwise, it shall
remain in full force and effect, subject to the following conditions:

1. A claimant is defined as one having a direct contract with the PRINCIPAL or with a subcontractor of the PRINCIPAL for labor, material, or both, used or reasonably required for use in the performance of the Contract, labor and material being construed to include but not be limited to that part of water, gas, power, light, heat, oil, gasoline, telephone services or rental of equipment directly applicable to the Contract.
2. The above named PRINCIPAL and SURETY hereby jointly and severally agree with the COUNTY that every claimant as herein defined, who has not been paid in full before the expiration of a period of ninety (90) days after the date on which the last of such claimant’s work or labor was done or performed, or materials were furnished by such claimant, prosecute a suit to final judgment for such sum or sums as may be justly due claimant, and have execution thereof. The COUNTY shall not be liable for payment of any cost or expenses of any such suit.
3. No suit or action shall be commenced hereunder by any claimant:
 - a. Unless claimant, or other than one having a direct contract with the PRINCIPAL, shall have written notice in the form of a sworn statement to the COUNTY and any one or both of the following: the PRINCIPAL or SURETY above named, within ninety (90) days after such said claim is made or suit filed, stating with substantial accuracy the amount claimed and the name of the party to whom the materials were furnished, or for whom the work or labor was done or performed.
 - b. Such notice shall be served by mailing the same by registered mail or certified mail, postage prepaid, in an envelope addressed to the COUNTY, PRINCIPAL or

SURETY, at any place where an office is regularly maintained by said COUNTY, PRINCIPAL or SURETY for the transaction of business, or served in any manner in which legal process may be served in the State in which the aforesaid project is located, save that such service need not be made by a public officer.

- 4. Any suit under this Labor and Material Bond must be instituted in accordance with the statute of limitation under Section 37-1-3 NMSA 1978.
- 5. No right of action shall accrue on this Bond to or for the use of any person or corporation other than subcontractors or sub-subcontractors of the said Contract between PRINCIPAL and Santa Fe County named herein.

SIGNED AND SEALED THIS _____ DAY OF _____, 2022.

CONTRACTOR – PRINCIPAL (signature)

By: _____
(Printed name and title)

NOTARY PUBLIC

(seal)

My Commission expires: _____

SURETY (signature)

(Printed name and title)

NOTARY PUBLIC

(seal)

My Commission expires: _____

SURETY’S Authorized New Mexico Agent

EXHIBIT D

PERFORMANCE BOND

(SAMPLE)

A. KNOW ALL MEN BY THESE PRESENT, THAT WE _____, as PRINCIPAL hereinafter called the “CONTRACTOR” and _____, as SURETY hereinafter called the “SURETY”, are held and firmly bound unto OBLIGEE Santa Fe County, a Political Subdivision of the State of New Mexico, hereinafter called the “COUNTY”, in the sum of _____ (\$_____) dollars for the payment whereof CONTRACTOR and SURETY bind themselves, their heirs, executors, administrators, successors and assigns, jointly and severally, firmly by these presents.

B. WHEREAS, the CONTRACTOR has a written contract dated _____, 2025, with the COUNTY for Bid Name, Santa Fe County, New Mexico, in accordance with drawings and specifications which contract is referenced made part hereof, and is hereinafter referred to as the “Contract.”

C. NOW, THEREFORE, THE CONDITION OF THIS OBLIGATION is such that, if CONTRACTOR shall promptly and faithfully perform said Contract (including any amendment thereto), then this obligation shall be null and void; otherwise it shall remain in full force and effect until the COUNTY shall by written instrument notify the SURETY that the obligation is discharged, except that the obligation shall continue for at least three (3) months following the expiration of the term of the Contract.

1. The SURETY hereby waives notice of any alteration or extension of the Contract time made by the COUNTY.
2. Whenever CONTRACTOR shall be, and is declared by the COUNTY to be in default under the Contract, the COUNTY having performed the COUNTY’S obligations thereunder, the SURETY must promptly remedy the default and shall promptly:
 - (3) Complete the Contract in accordance with its terms and conditions, or
 - (4) Obtain a bid or bids for submission to the COUNTY for completing the Contract in accordance with its terms and conditions, and upon determination by the COUNTY and SURETY of the lowest responsible bidder, arrange for a contract between such bidder and Santa Fe County, and make available as work progresses (even though there should be a default or a secession of defaults under the Contract or contracts of completion arranged under this paragraph) sufficient funds to pay the cost of completion less the balance of the Contract price, but not exceeding, including other costs and damages for which the SURETY may be liable hereunder, the amount set forth in the first paragraph hereof. The term “balance of the Contract price” as used in this paragraph, shall mean the total amount payable by the COUNTY to CONTRACTOR under the Contract and any amendments thereto, less the amount properly paid by the COUNTY to CONTRACTOR.

D. No right of action shall accrue on this Performance Bond to or for the use of any person or corporation other than Santa Fe County named herein or the heirs, executors, administrators, or successors of Santa Fe County.

E. This Bond shall be enforceable without the need to have recourse to any judicial or arbitral proceedings.

SIGNED AND SEALED THIS _____ DAY OF _____, 2025.

CONTRACTOR – PRINCIPAL (signature)

By: _____
(Printed name and title)

NOTARY PUBLIC (seal)

My Commission expires: _____

SURETY (signature)

(Printed name and title)

NOTARY PUBLIC (seal)

My Commission expires: _____

SURETY'S Authorized New Mexico Agent

EXHIBIT E

ASSIGNMENT OF ANTITRUST CLAIMS

TO BE EXECUTED BY GENERAL CONTRACTORS, SUBCONTRACTORS, SUPPLIERS,
AND SUBSUBCONTRACTORS OF CONTRACTORS ON COUNTY CONTRACTS.

FIRM NAME:

PROJECT:

PHONE NO.:

PROJECT NO:

_____ agrees that any and all claims which it may have or may incur to it for overcharges resulting from antitrust violations as to goods, services, and materials purchased in connection with the above-referenced project are hereby assigned to Santa Fe County, but only to the extent that such overcharges are passed on to the County. It is agreed that the undersigned retains all rights to any such antitrust claims to the extent of any overcharges not passed on to the County, including the right to any treble damages attributable thereto.

FIRM: _____

BY: _____
Signed by individual empowered to obligate suppliers,
subcontractors or sub subcontractors

TITLE: _____

EXHIBIT F
CERTIFICATE OF LIABILITY INSURANCE

EXHIBIT G

NOTICE OF CONTRACT AWARD

TO:

FROM: _____, Public Works Department

CONTRACT NO.

This is to inform that you that you have been awarded the Contract for:

Project Name:

Date of Award _____ Amount of Award _____

Contractor Information:

Firm Name: _____ License# _____

Address: _____ Phone # _____

It is anticipated that construction will take place:

Approximate Starting Date: _____ Approximate Completion Date: _____

Santa Fe County hereby accepts your offer on the solicitation No. _____ as reflected in this award document. The rights and obligations of the parties shall be subject to and governed by this document and any documents attached or incorporated by reference.

SANTA FE COUNTY

Name of Public Works Director or designee: _____
(Print Name)

Signature

EXHIBIT H

NOTICE TO PROCEED

TO:	DATE:
	PROJECT:
ATTN:	PROJECT NO.
	CONTRACT NO.
	IFB NO.

Enclosed is your copy of the contract, which has been approved. Please consider this letter as official NOTICE TO PROCEED on the above-referenced project.

Your firm shall commence work within ten (10) calendar days of the above date and shall achieve Substantial Completion [redacted] calendar days thereafter, which shall be [redacted], 2025,

unless modified by Change Order.

It is essential that you make reference to the above-stated project number on all documents sent to the County from your office. These documents shall include correspondence, change order proposals, change orders, payment request statements, and all other project-related material which you forward to the County for information and processing.

Also, before you may start any Work at the site, you must (add any other requirements):

COUNTY: Santa Fe County
SFC [redacted] DEPARTMENT

By: [redacted]
Director, SFC Department

EXHIBIT I
CHANGE ORDER

PROJECT:

CONTRACTOR
CHANGE ORDER NO:

PROJECT NO:

Contractor Telephone:
Contractor e-mail:
PROJECT NO:

CHANGE ORDER JUSTIFICATION (Provide definitive reason for proposed change order.)

You are directed to make the following changes in this contract: (Provide a detailed description of the Scope of the Work.)

NOT VALID UNTIL SIGNED BY BOTH THE COUNTY.. Signature of the Contractor indicates its agreement herewith, including any adjustment in the contract sum or contract time.

Original contract sum:
Net change by previously authorized Change Orders \$0.00
The contract sum will be increased/decreased/unchanged by this Change Order in the amount of:
\$0.00
The contract sum including this Change Order: \$0.00
The Contract Time will be increased/decreased/unchanged by days.
The date of Substantial Completion as of the date of this Change Order therefore is:

CHANGE ORDER SIGNATURE PAGE

APPROVED

SANTA FE COUNTY

By: _____
Gregory S. Shaffer
Santa Fe County Manager

Date: _____

Approved as to form:

By: _____
County Attorney

Date: _____

CONTRACTOR

By: _____

Date: _____

Title: _____

EXHIBIT J

CERTIFICATE OF SUBSTANTIAL COMPLETION

SANTA FE COUNTY – PUBLIC WORKS

Public Works Director or designee (name): _____

CONTRACTOR: _____

Contractor Purchase Order Number: _____

Project Name: _____

Contract Date: _____

Project Description - Article 2 to Agreement Between Santa Fe County and Contractor (include address and project location description):

The Contractor hereby certifies the Work of this project to be in complete conformance to the Contract Documents and is substantially complete, enabling the County to make use of the Work as intended.

By its signature below the Contractor further requests and the County to inspect the Work and to concur in the Work’s substantial completion by their signature and/or to provide in a timely manner to Contractor a listing of work items adjudged by them as remaining to be completed or corrected. Contractor agrees to complete and correct all work items (Punch List) representative of such listing within ___days from date of receipt from the County.

Contractor

Signature

Print Name

Date

Accepted by Santa Fe County

Signature (Public Works Director or Designee) Print Name Date

PUNCH LIST

A list of items (Punch List) to be completed or corrected, verified by the County, is appended hereto. Failure to include any incomplete items on such list does not alter the responsibility of the Contractor to provide all Work in complete conformance with the Contract Documents.

The Contractor shall complete or correct the work on the punch list appended hereto by _____ (Date)

The punch list consists of _____(indicate number of items) items.

The Work performed under this contract has been reviewed and found to be substantially complete by the Director of Public Works who has hereby established the Date of Substantial Completion as _____(date) which is also the date of commencement of all warranties and guarantees required by the Contract Documents. The Date of Substantial Completion of the Work or designated portion thereof is the date established by the Director of Public Works (or designee) when construction is sufficiently complete, in accordance with the Contract Documents, so the County may occupy the Work, or designated portion thereof, for the use for which it is intended.

The County accepts the Work or designated portion thereof as substantially complete and assumes full possession thereof, in accordance with the contract documents.

Punch List Items: (Use additional sheets if necessary)