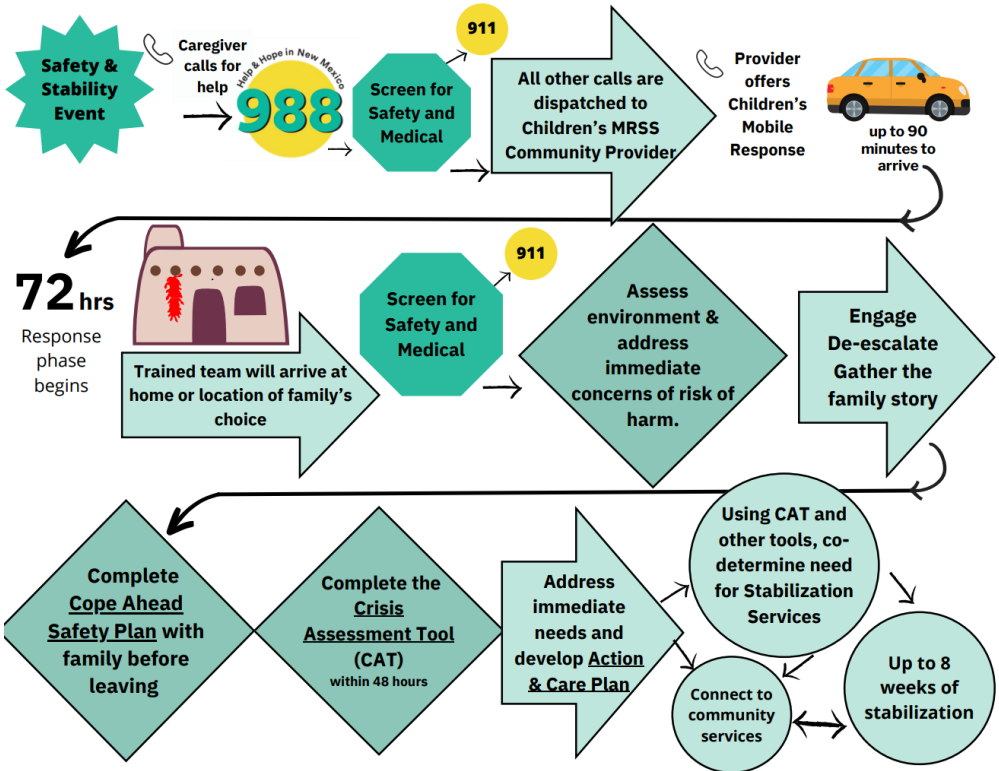


# MRSS is *More than first response*

## Mobile Response – Up to 72 Hours



## Stabilization Services – Up to 8 Weeks

Stabilization Services last up to 8 weeks, which can include:

- Connection to community supports and services
- Reconnection with meaningful social and recreational activities
- In-home support for the youth and family
- Connection to higher level of support if determined necessary

# NM Children's MRSS

## Development Timeline

**PARTNERS:**

**CYFD BEHAVIORAL HEALTH SERVICES**

**NMSU CENTER OF INNOVATION - UNM DATA EVALUATION - HUMAN SERVICES DEPARTMENT -  
BEHAVIORAL HEALTH SERVICES DEPARTMENT - MEDICAL ASSISTANCE DIVISION**

