



MOSS LANDING FIRE

NEVER AGAIN!!

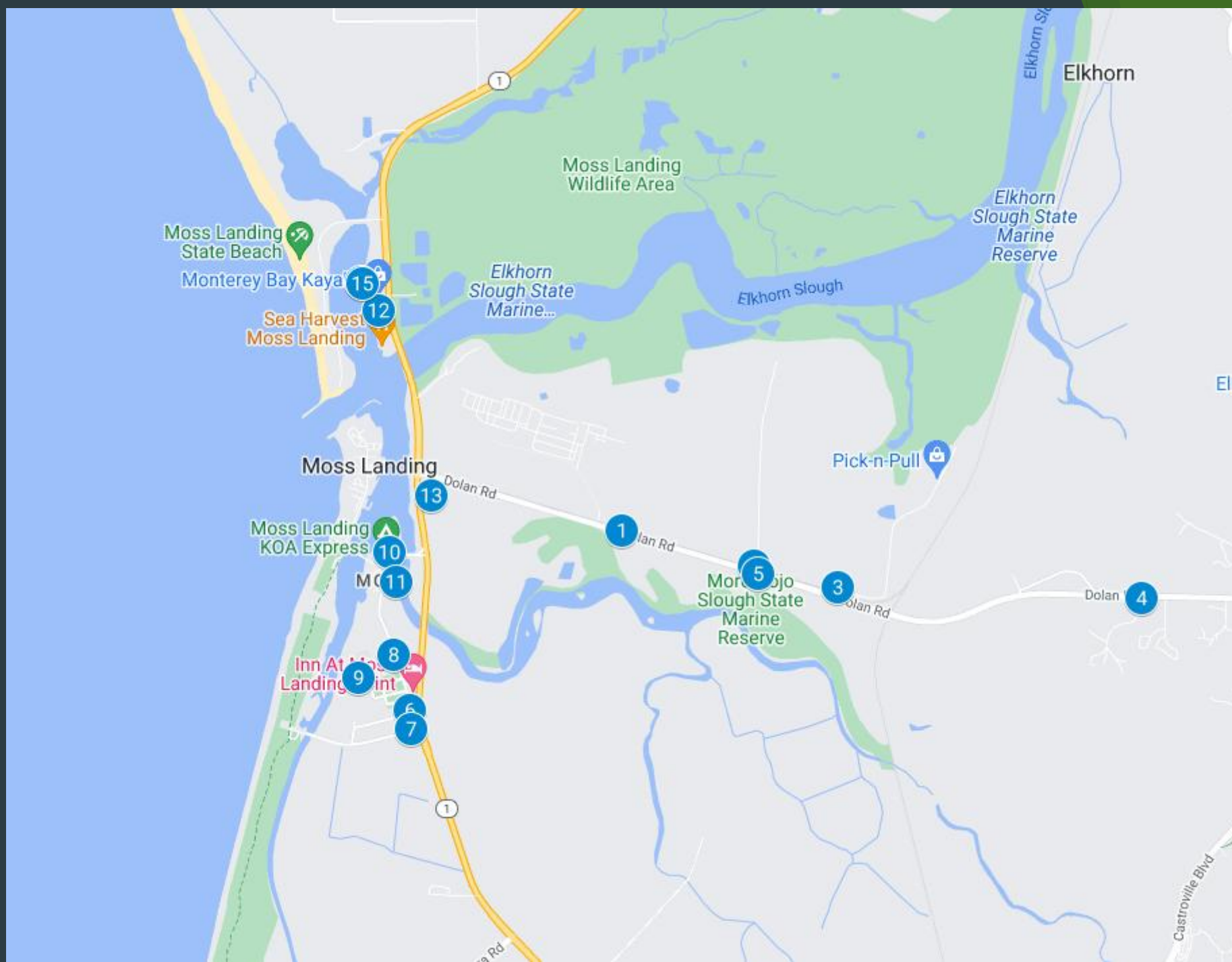


© 2025 Richard Bernard





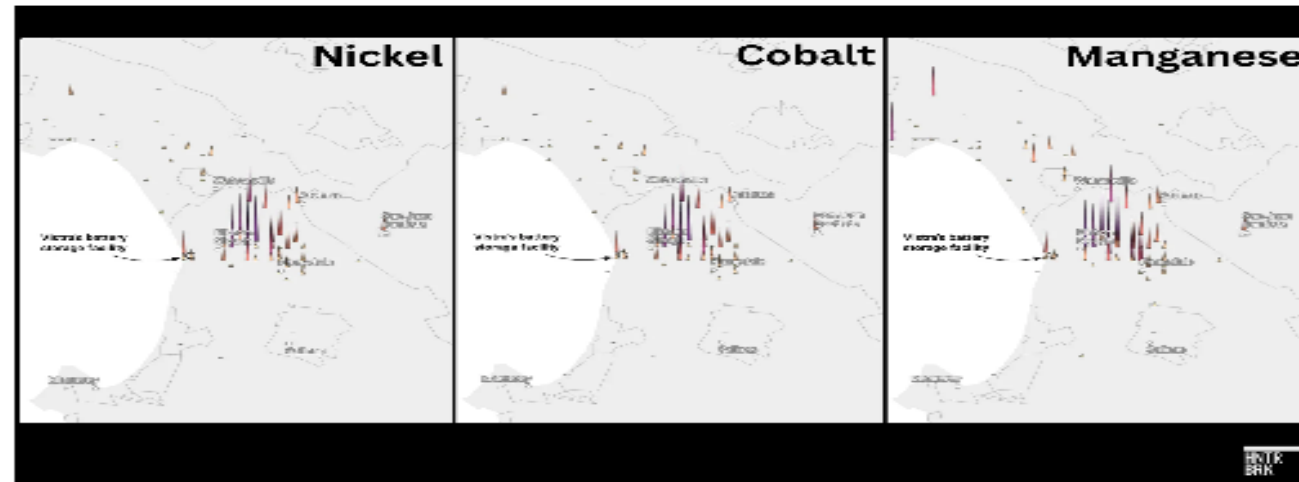
© 2025 Richard Bernard



HUNTERBROOK

SIGN UP

BREAKING: NEW DATA INDICATES ELEVATED HEAVY METAL AFTER VISTRA FIRE

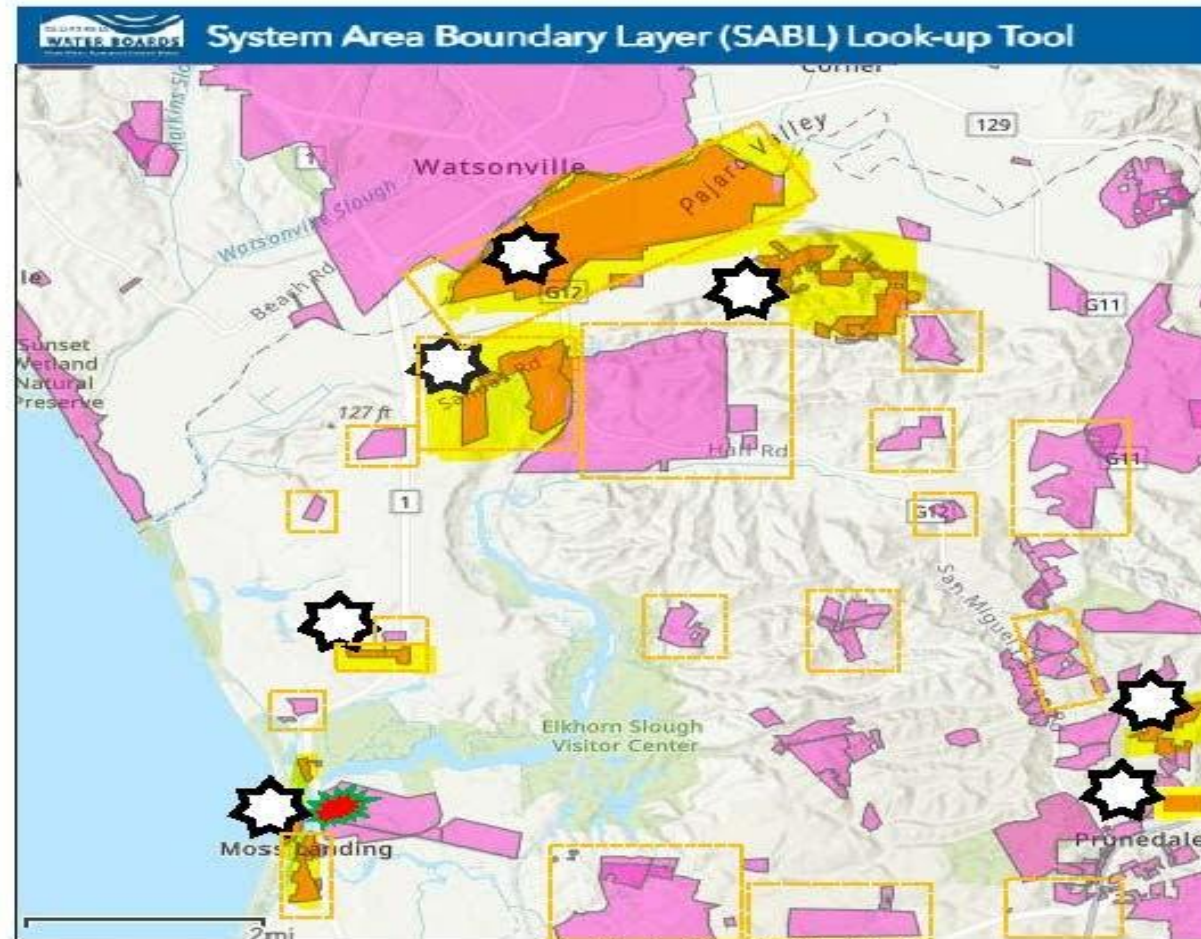


FEB 11, 2025 5:55 PM EST

BY: [Till Daldrup](#) [Ruth Dusseault](#) [Michelle Cera](#) [Bay City News](#)

EDITOR: [Sam Koppelman](#)

- Surface sample testing conducted by a grassroots community response



-  = Site of Vista Battery Fire
-  = Community Water Systems* (CWS) or other Public Water Systems* (PWS)
-  = (CWS) or other (PWS) operated by Palmdale Sunny Mesa (On Jan. 28* only these were advised to collect additional precautionary samples due to the fire.)
-  = CWS or other PWS with the highest Environmental Justice Index (highest degree of problematic vulnerability by population).
Source: Agency for Toxic Substances and Disease Registry <https://www.atsdr.cdc.gov/place-health>.
Parameters used: Individuals with disabilities, Health Disparity Index, Existing cases of Cancer and Asthma, Age (over 65), and racial inequality.

*Note: Community Water Systems and Public Water Systems, in general, are water supplies that provide water to more than 15 service connections or 25 or more individuals. This map does not include State-Small and Local Small Water Systems (regulated solely by the County) that serve 2-14 service connections and not otherwise classified as a CWS or PWS.



Dispute Erupts Over What Sparked an Explosive Li-ion Energy Storage Accident

The April 2019 accident near Phoenix put plans on hold to further deploy battery energy-storage systems across Arizona

BY DAVID WAGMAN

10 AUG 2020



Interior damage to the BESS after the explosion [left], and after debris was removed to gain access to begin the forensics analysis [right].

PHOTOS: ARIZONA PUBLIC SERVICE

AES Facility at Surprise, AZ

COUNTY OF MONTEREY







**Lithium battery factory in Hillyard damaged in
largest fire of its kind ever in Spokane**