

## **ATTACHMENTS**

### **MAPS**

FIGURE 1 – Santa Fe Metro Growth Area Plan (Exhibit 10 of County Growth Management Plan)

FIGURE 2 – Santa Fe Community College District Context Map

FIGURE 3 – Santa Fe Community College District Land System Map

FIGURE 4 – Santa Fe Community College District Land Use Zoning Map

FIGURE 5 – Santa Fe Community College District Preliminary Circulation Map

FIGURE 6 – Santa Fe Community College District Utilities Map

FIGURE 7 – Santa Fe Community College District Planning Areas

FIGURE 8 – La Cienega Watershed Map

### **SUMMARY OF EXISTING CONDITIONS**

Working Paper 2 of the Future Road Network Study  
for the Santa Fe Community College District

Santa Fe County Resolution 2000 – 148

Extraterritorial Zoning Ordinance 2000 – 02

# Santa Fe Metro Area Growth Management Plan Santa Fe County

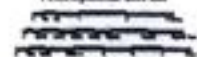


## LEGEND

- |   |  |  |
|---|--|--|
| BLM Land  | Proposed Urban Area Boundary           | GPS Roads - DRAFT STATUS                       |
| Forest Service Land                                       | Community College District Boundary    | Major Streams and Arroyos                      |
| State Land  | Airport Development District Boundary  | Minor Streams and Arroyos                      |
| State Penitentiary  | City of Santa Fe Incorporated Boundary | Subterritorial Zoning District Boundary (SZ-2) |
| NM National Guard   | West Santa Fe Urban Growth Area        | 5 Mile Extraterritorial Boundary (SZ-5)        |
| Pueblo Land   | South Santa Fe Urban Growth Area       | Parcel Boundaries - DRAFT STATUS               |
| Traditional Villages (County Zoning Designation)          | Airport Development District           | Residential                                    |
| Traditional Historic Villages (State Statute Designation) | Proposed Highway Corridor District     | Commercial (Includes Office & Industrial)      |
| City/County Recreation Area                               | Riparian Areas                         | Vacant   |
| City/County Landfill                                      | Mountain Special Review District       |  |



Scale 1:40,000  
1 inch represents 1.609 km



This information is for reference only.  
Santa Fe County assumes no liability for  
errors associated with the use of these data.  
Users are solely responsible for confirming  
data accuracy when necessary.



October 26, 2009





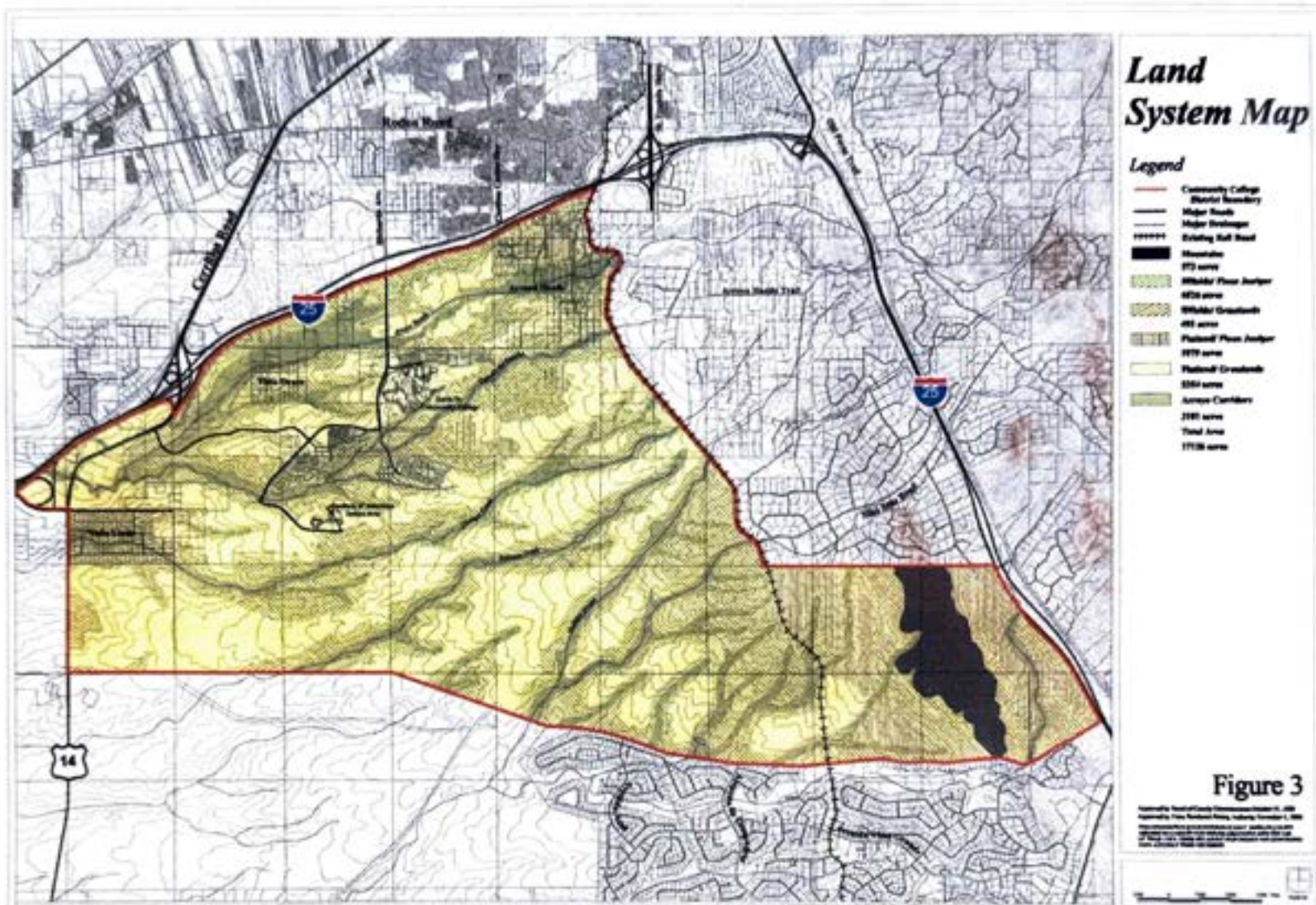
**Figure 2**

Copyright 2000 Santa Fe Community College District. All rights reserved. This map is a proprietary work of Santa Fe Community College District. No part of this map may be reproduced without written permission from Santa Fe Community College District.

# ***Santa Fe Community College District***







***Santa Fe Community College District***





The map illustrates the proposed route for the San Francisco Peninsula Expressway, highlighted in green. Key locations are marked with red dots, and the route is shown as a series of connected segments. Major highways, including I-580 and I-680, are depicted with their respective shields. The map also shows the San Francisco Bay, the Golden Gate Bridge, and various local roads. A legend in the bottom left corner provides a key for the symbols used, including a red dot for 'Proposed Expressway Station', a red line for 'Proposed Expressway', and a blue line for 'Proposed Expressway Right-of-Way'. The map is oriented with North at the top, and a scale bar is provided in the bottom right corner.

Community College District Boundary  
 Major Thoroughfare  
 Existing Rail Road  
 Proposed Rail Road  
 Village Sites  
 Planned Place Analysis  
 Employment Component  
 Institutional Component  
 Amenity Corridors and Open Space  
 Roads - Proposed & Existing  
 Village Separators  
 District Trails  
 Proposed Alignments  
 Rural Zones  
 Existing Neighborhood Zones  
 New Community Centers & Walking Ruffel  
 Fringe Zones  
 Middleclass Place Analysis  
 Middleclass Greenbelts  
 Buffer Areas  
 1 Highway 10 buffer  
 2 Village Green buffer  
 3 Midtown's Area / 200 ft buffer  
 4 Airport North West buffer  
 5 New Mills buffer  
 6 St Francis buffer  
 7 100-150' Highway Corridor  
 8 150-200' Highway Corridor  
 Elementary Schools  
 Middle Schools  
 High Schools

Figure 4

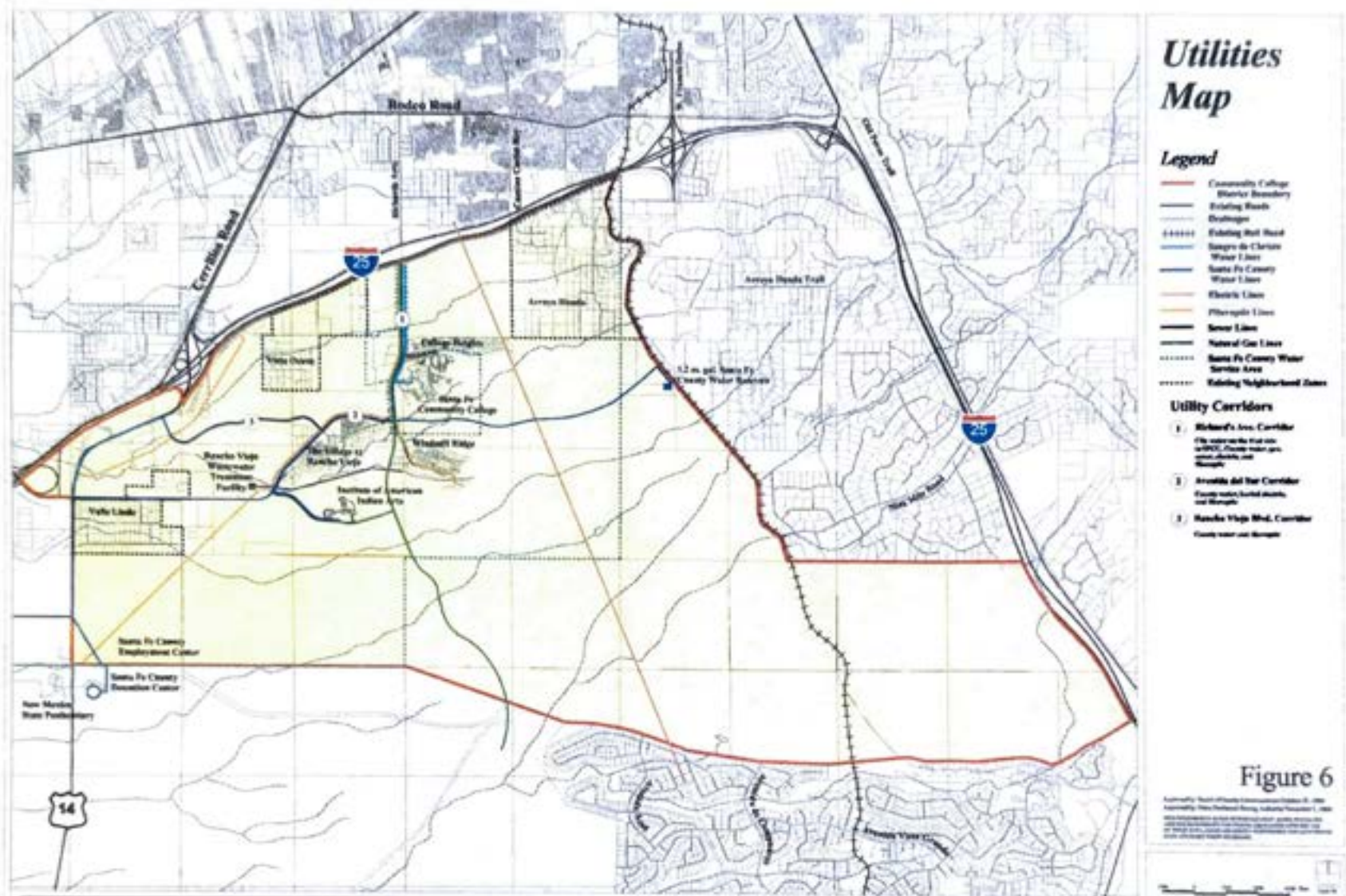
Copyright © 1997 by John Wiley & Sons, Inc.  
All rights reserved. No part of this publication may be reproduced, stored in a retrieval system, or transmitted, in any form or by any means, electronic, mechanical, photocopying, recording, or by any information storage and retrieval system, without permission in writing from John Wiley & Sons, Inc.



***Santa Fe Community College District***







## Santa Fe Community College District



# SANTA FE COUNTY

## *Resolution No. 2000-148*

---

**A RESOLUTION AMENDING RESOLUTION 2000 - 136, THE SANTA FE COMMUNITY COLLEGE DISTRICT PLAN, TO ADOPT AND INCORPORATE AMENDMENTS**

---

WHEREAS, after a public hearing held before the Board of Commissioners on October 10, 2000, Resolution 2000 -136, amending Resolution 1999 - 137, the Santa Fe County Growth Management Plan, to adopt and incorporate the Santa Fe community College District Plan was approved; and

WHEREAS, the Board of County commissioners directed staff to prepare recommended amendments based on staff review and public testimony and to present these for consideration at the regular Board meeting on October 31, 2000; and

WHEREAS, a public hearing has been held before the Board of Commissioners on October 31, 2000 to consider proposed amendments to the Plan and all testimony has been heard and considered;

NOW, THEREFORE, BE IT RESOLVED by the Board of County Commissioners of Santa Fe County that:

1. Amendments to THE SANTA FE COMMUNITY COLLEGE DISTRICT PLAN attached as Exhibit A to this Resolution are hereby adopted; and
2. The adopted amendments shall be incorporated into THE SANTA FE COMMUNITY COLLEGE DISTRICT PLAN, Resolution 2000 - 136, and
3. Resolution 1999-137, The Santa Fe County Growth Management Plan, is hereby amended to incorporate the approved Santa Fe Community College District Plan, with all approved amendments.

Adoption of this Resolution will invalidate and render null and void any inconsistent provisions of the Santa Fe County Growth Management Plan approved October 26, 1999.

PASSED, APPROVED AND ADOPTED this 31<sup>st</sup> day of October, 2000.



1868804

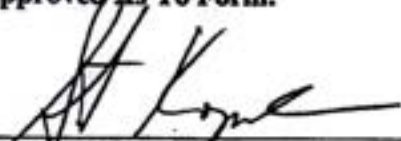
BOARD OF COUNTY COMMISSIONERS

  
Richard D. Anaya, Chairman



  
Rebecca Bustamante  
County Clerk

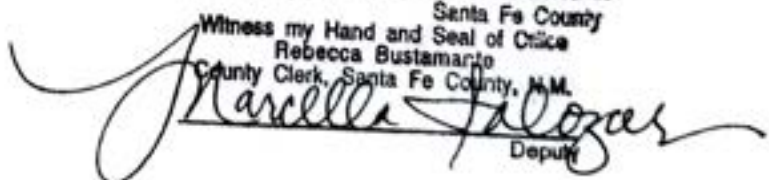
Approved As To Form:

  
County Attorney



147589  
COUNTY OF SANTA FE  
STATE OF NEW MEXICO } 59  
I hereby certify that this instrument was filed  
for record on the 6 day of May A.D.  
20 01 at 9:59 o'clock 9 m.  
and was duly recorded in book 1868  
page 803-819 of the records of

Santa Fe County  
Witness my Hand and Seal of Office  
Rebecca Bustamante  
County Clerk, Santa Fe County, N.M.

  
Deputy



1  
2  
3 **SANTA FE EXTRATERRITORIAL**  
4 **ZONING AUTHORITY**

5 *Ordinance No. 2000 - 02*

6  
7 1871844  
8

9 **AN ORDINANCE AMENDING EZA ORDINANCE 1988-1, THE SANTA FE**  
10 **COMPREHENSIVE EXTRATERRITORIAL PLAN, TO INCORPORATE THE**  
11 **SANTA FE COMMUNITY COLLEGE DISTRICT PLAN IN SECTION V.**  
12

13  
14 **WHEREAS, the Santa Fe Comprehensive Extraterritorial Plan, EZA Ordinance 1988-1, as**  
15 **amended, provides goals and objectives to**

- 16 1. allow residential and non-residential growth at urban intensities where infrastructure and  
17 services can be provided by a public or private entity when development occurs; and  
18 2. establish desirable patterns and densities of residential use which are responsive to existing  
19 or traditional development patterns, to the ability to provide community facilities and public  
20 services and to sound environmental management and design practices; and  
21 3. develop and maintain housing, residential neighborhoods and traditional communities which  
22 enhance the living environment of all Santa Fe area residents; and  
23 4. encourage a wide range and mix of housing types, including affordable housing; and  
24 5. provide adequate park land and open space and preserve the open character by clustering  
25 development and encouraging sensitivity in site design; and  
26 6. where feasible service new development by the regional water system and that sewer  
27 systems, arterials, density, terrain, environmental impact and provision of services will  
28 determine where intensive development shall occur; and  
29 7. establish desirable patterns and intensities of non residential uses by defining appropriate  
30 location and encourage new development which is more sensitive to those visual qualities and  
31 cultural patterns which embody the sense of place for the Santa Fe area; and  
32 8. recognize that each traditional community, neighborhood or sector has a unique  
33 development and land ownership pattern for which more detailed planning may occur; and

34 **WHEREAS, the Santa Fe Community College District has been designated as a New Community**  
35 **District by the Santa Fe County Growth Management Plan, County Resolution 1999-137, in order to:**

- 1        1. allow higher density, more compact villages (in keeping with historic, traditional village  
2        development patterns and scale) to occur in the non-urban, countryside area where the most  
3        efficient use of infrastructure and public services can be achieved; and
- 4        2. keep open space separations between all new and existing villages and other settlement  
5        areas; and
- 6        3. keep a discernible boundary between urban and non-urban areas; and
- 7        4. provide appropriate connections among villages, in the form of roads, trails and transit  
8        opportunities; and
- 9        5. focus economic and community development opportunities within individual villages; and
- 10       6. realize affordable housing opportunities and choices within all villages; and
- 11       7. ensure that the creation of new villages is the theme rather than the variation; and
- 12       8. prepare a New Community District Plan that addresses the above issues and makes detailed  
13       recommendations regarding land uses, infrastructure and public services including: water,  
14       sewer, refuse services, a road network, transit services, public schools and park and  
15       recreation facilities, appropriate uses and densities, design standards, and techniques for  
16       achieving the plan, including the potential use of transfer of development rights and density  
17       transfers; and

18       WHEREAS, on July 27, 1999 the Board of County Commissioners adopted Resolution 1999-93, a  
19       Resolution establishing a Santa Fe Community College District Planning Committee to complete a  
20       Plan for development of the District; and

21       WHEREAS, the District Planning Committee has met regularly in public sessions since then and has  
22       completed a Plan which recommends specific ways in which infrastructure and community facilities  
23       can be built and maintained, assures a connected open space and trails system, and creates a balance  
24       of different types of land uses that can be connected to transit as directed in Resolution 1999-93; and

25       WHEREAS, the proposed Santa Fe Community College District Plan conforms to the directives and  
26       the density and design parameters set forth in the Santa Fe County Growth Management Plan; and

27       WHEREAS, public meetings have been held at the Santa Fe Community College and in  
28       neighborhoods within the District to inform residents and property owners of the Plan and solicit  
29       their comments and participation; and

30       WHEREAS, on October 2, 2000 the Extraterritorial Zoning Commission reviewed the proposed Plan  
31       in a public hearing and recommended the Plan for adoption by the Extraterritorial Zoning Authority  
32       with amendments submitted by staff; and

33       WHEREAS, a public hearing has been held before the Extraterritorial Zoning Authority on October  
34       24, 2000 to consider adoption of the Plan and all testimony has been heard and considered.

35

36       **BE IT ORDAINED BY THE EXTRATERRITORIAL ZONING AUTHORITY OF THE**  
37       **CITY AND COUNTY OF SANTA FE:**

38

- 39       1. THE SANTA FE COMMUNITY COLLEGE DISTRICT PLAN attached as  
40       Exhibit A to this Ordinance, with all amendments, is hereby adopted; and
- 41       2. EZA Ordinance 1988-1, the Santa Fe Comprehensive Extraterritorial Plan, is  
42       hereby amended to incorporate the approved Santa Fe Community College  
43       District Plan.

44



1871846

**PASSED, ADOPTED AND APPROVED** this 1<sup>st</sup> day of Nov., 2000, by the Santa Fe Extraterritorial Zoning Authority.

**JIMMIE MARTINEZ, CHAIRMAN**

**ATTEST**

APPROVED AS TO FORM:

COUNTY ATTORNEY

CITY ATTORNEY