

CEC Exhibit 10

**AES Application EIR Fig 3.6  
Missing both the Gallina  
Arroyo and the NM Gas Line  
running N/S west of  
Eldorado**

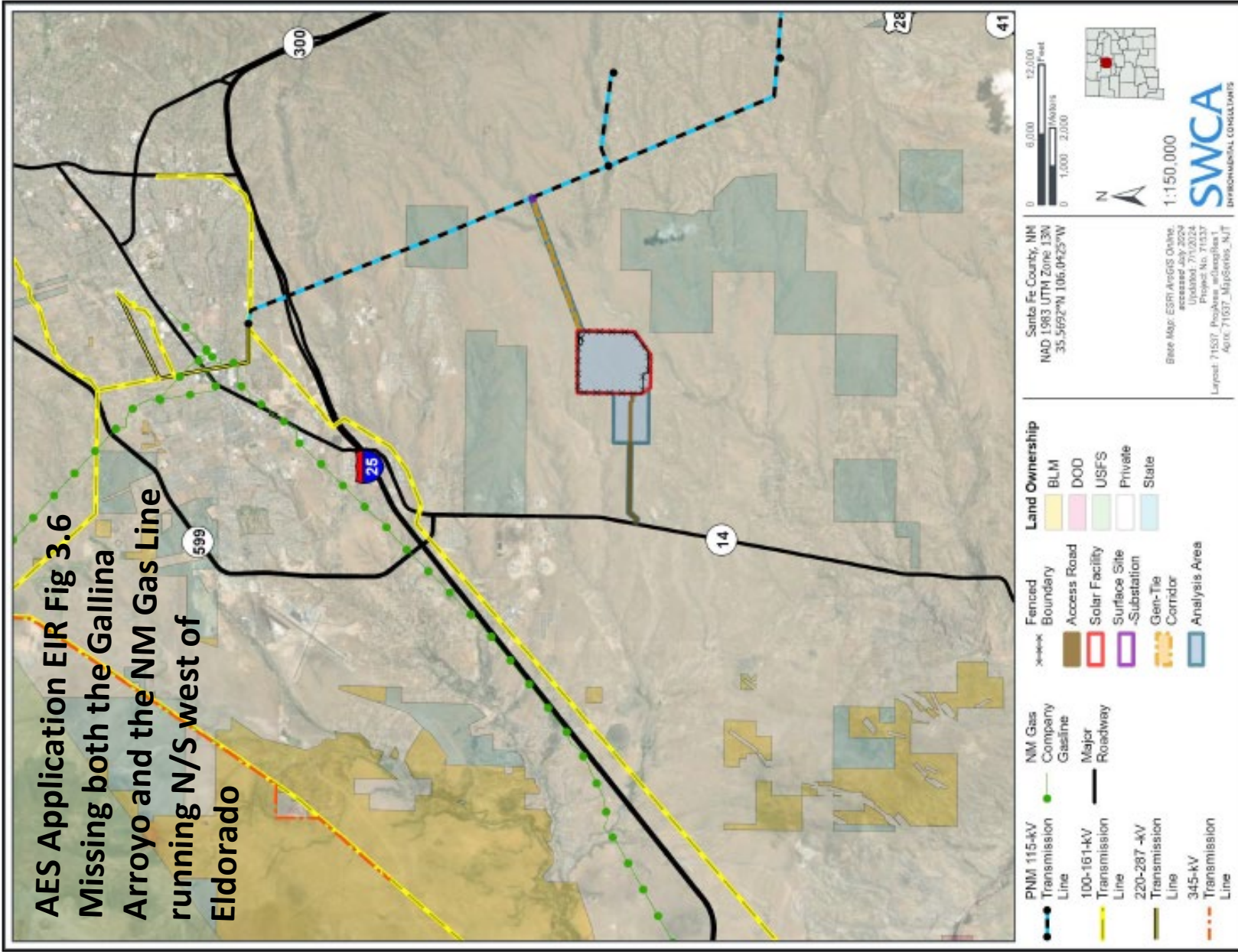


Figure 3.6. Analysis area and surrounding land uses.



## Distance to 47 Encantado Loop

7,628 feet to corner of BESS  
1.45 miles to corner of BESS

PNM Point of Interest

kml\_4606

Gallina Arroyo

Custom Closet of Santa Fe

NM Gas Line not  
shown on AES  
Application EIR,  
Figure 3.6

Pictures at 53 Camerada  
Rd, above ground gas  
lines

Google Earth

2000 ft



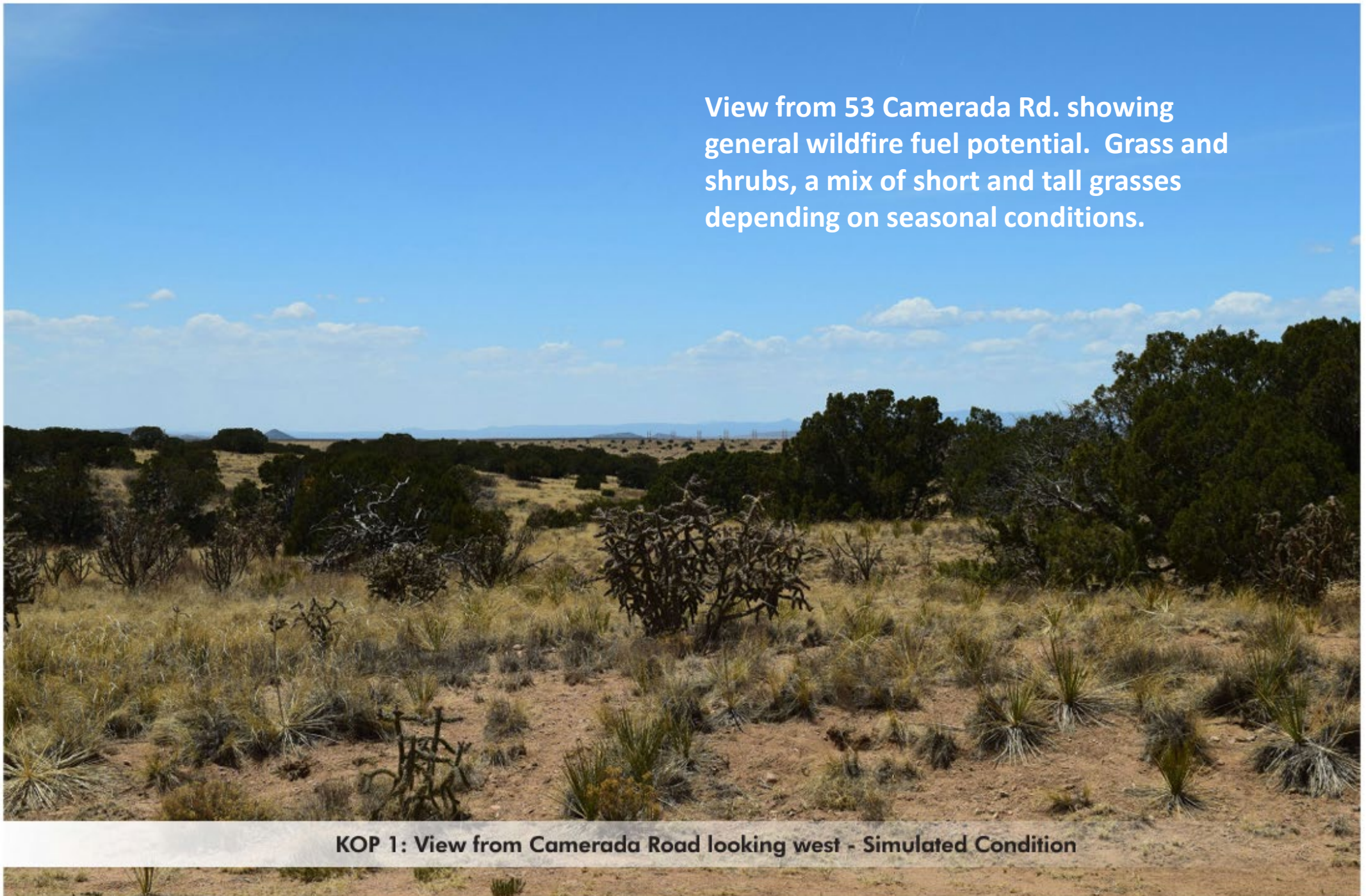




NM Gas Line not  
shown on AES  
Application EIR,  
Figure 3.6



**View from 53 Camerada Rd. showing  
general wildfire fuel potential. Grass and  
shrubs, a mix of short and tall grasses  
depending on seasonal conditions.**



**KOP 1: View from Camerada Road looking west - Simulated Condition**



