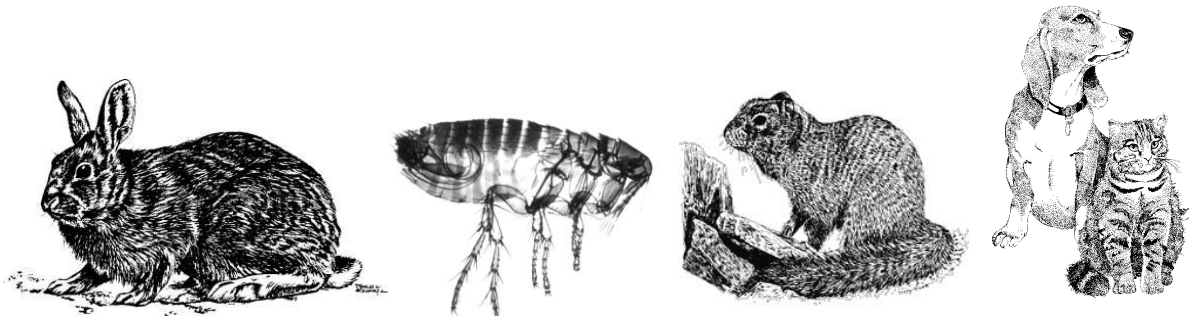


PUBLIC NOTICE: PLAGUE WARNING



Plague has been identified in this area. Plague can be fatal to people and pets unless properly diagnosed and treated.

Plague can be transmitted by fleas and contact with infected animals, such as rodents, rabbits, and cats.

TO REDUCE YOUR RISK:

- Avoid contact with wild animals; don't touch sick or dead animals
- Use flea control products on pets; prevent pets from roaming and hunting
- Take sick pets to a veterinarian
- Use insect repellent
- **CONSULT A DOCTOR IF YOU SUDDENLY BECOME ILL.** Symptoms of plague include fever, chills, headache, muscle pain, weakness, and sometimes buboes (tender and swollen lymph nodes in groin, armpit, or neck)

New Mexico Department of Health
(833) 796-8773