

Backup Locations

CF Padilla Crew #4 Delmar's Crew
FWD16_SAN near San I Booster Station
Potholing

CF Padilla Crew #2 Sheridan's Crew
Misc appurtenances on completed pipelines

Upcoming

CF Padilla Crew #1
Excavating and setting control valve vaults at
existing tank sites

814 Solutions
Black Mesa Tank
Installing temporary fence and SWPPP BMPs (tentative)

CF Padilla Crew #3 Mike's Crew
FWD20_SAN on CR-84b
Installing pipeline appurtenances

Upcoming Acequia Crossings:
Ortiz Ditch
de Los Indios

Smithco Crew #1 Alex's Crew
NM502 between Bundy Rd and Entrada El Rancho
Right of Way Cleanup, manholes, and valve collars
Disinfection of RWT

Smithco Crew #2 Chuy's Crew
NM502 heading east of Entrada El Rancho
Right of Way Cleanup, manholes, and valve collars

CF Padilla (Upcoming)
Tewa Tank
Excavate for control valve vault

El Rancho Tank

CF Padilla Crew #1
Yard piping and vaults
Hydrotesting (tentative)



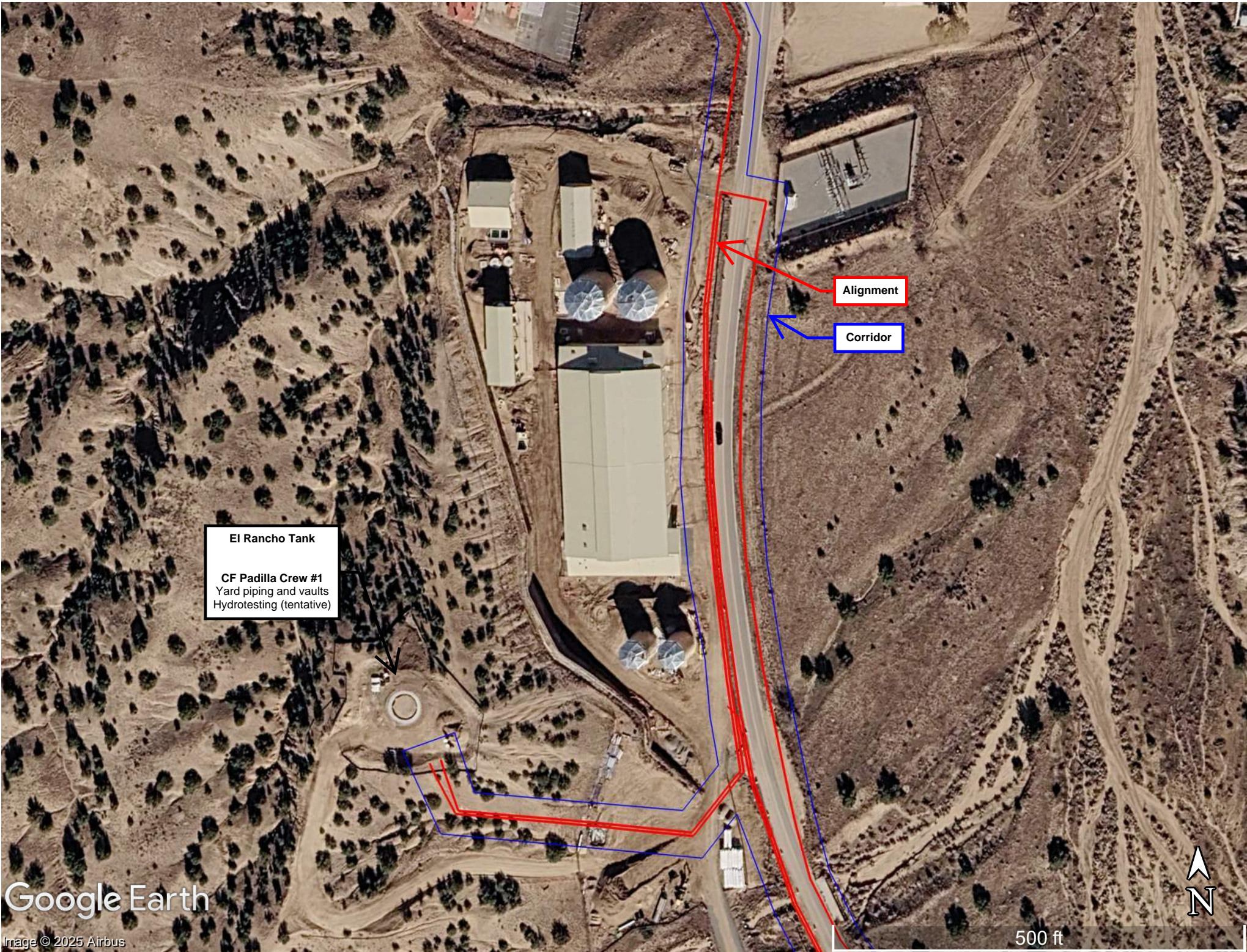
CF Padilla Crew #3 Mike's Crew
FWD20_SAN on CR-84b
Installing pipeline appurtenances

Upcoming Acequia Crossings:
Ortiz Ditch
de Los Indios

Alignment

Corridor





El Rancho Tank
CF Padilla Crew #1
Yard piping and vaults
Hydrotesting (tentative)

Alignment

Corridor

