

Backup Locations

CF Padilla Crew #4 Delmar's Crew
FWD16_SAN near San I Booster Station
Potholing

CF Padilla Crew #2 Sheridan's Crew
Misc appurtenances on completed pipelines

Upcoming

CF Padilla Crew #1
Excavating and setting control valve vaults at existing tank sites

Black Mesa Tank

814 Solutions
Installing temporary fence and SWPPP BMPs

CF Padilla
Excavating for control valve vault
Crane Lift June 24th

CF Padilla Crew #3 Mike's Crew
FWD20_SAN on CR-84b
Installing pipeline appurtenances

Upcoming Acequia Crossings:
Ortiz Ditch
de Los Indios

Smithco Crew #1 Alex's Crew
NM502 between Bundy Rd and Entrada El Rancho
Right of Way Cleanup, manholes, and valve collars
Disinfection of RWT

Smithco Crew #2 Chuy's Crew
NM502 heading east of Entrada El Rancho
Right of Way Cleanup, manholes, and valve collars

Tewa Tank
CF Padilla (Upcoming)
Excavate for control valve vault

El Rancho Tank
Texas Aquastore
Completing tank + touch ups
CF Padilla Crew #1
Yard piping and vaults
Hydrotesting (tentative)



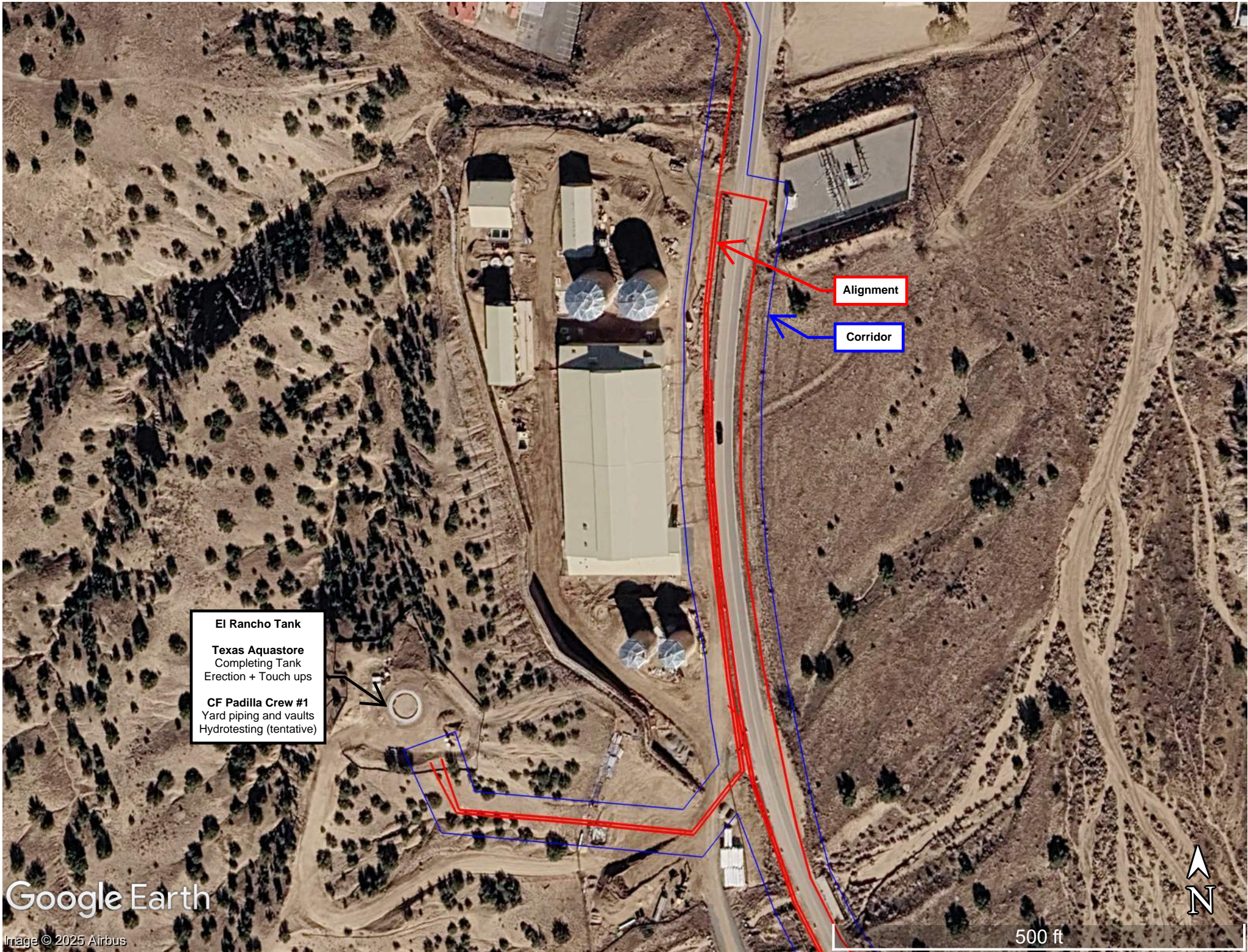
CF Padilla Crew #3 Mike's Crew
FWD20_SAN on CR-84b
Installing pipeline appurtenances

Upcoming Acequia Crossings:
Ortiz Ditch
de Los Indios

Alignment

Corridor





Alignment

Corridor

El Rancho Tank
Texas Aquastore
Completing Tank
Erection + Touch ups
CF Padilla Crew #1
Yard piping and vaults
Hydrotesting (tentative)

Google Earth

Image © 2025 Airbus

500 ft

