

SANTA FE COUNTY'S  
ACCOUNTABLE HEALTH COMMUNITY  
ONE YEAR LATER

December 15th, 2017  
Hilton Santa Fe  
11:30 am to 1:30 pm





Welcome!

RACHEL O'CONNOR,  
COMMUNITY SERVICES DIRECTOR



# THE YEAR IN REVIEW

PATRICIA BOIES,  
HEALTH SERVICES DIVISION DIRECTOR

# HEALTH POLICY AND PLANNING COMMISSION (HPPC)

---

## County Health Action Plan: Six Priorities

- Increase enrollment in health insurance
- Reduce alcohol use
- Reduce suicides
- Reduce low birth weight births
- Increase consumption of health foods

# SHIFT FROM CLAIMS TO CONTRACTS TO ADDRESS PRIORITIES

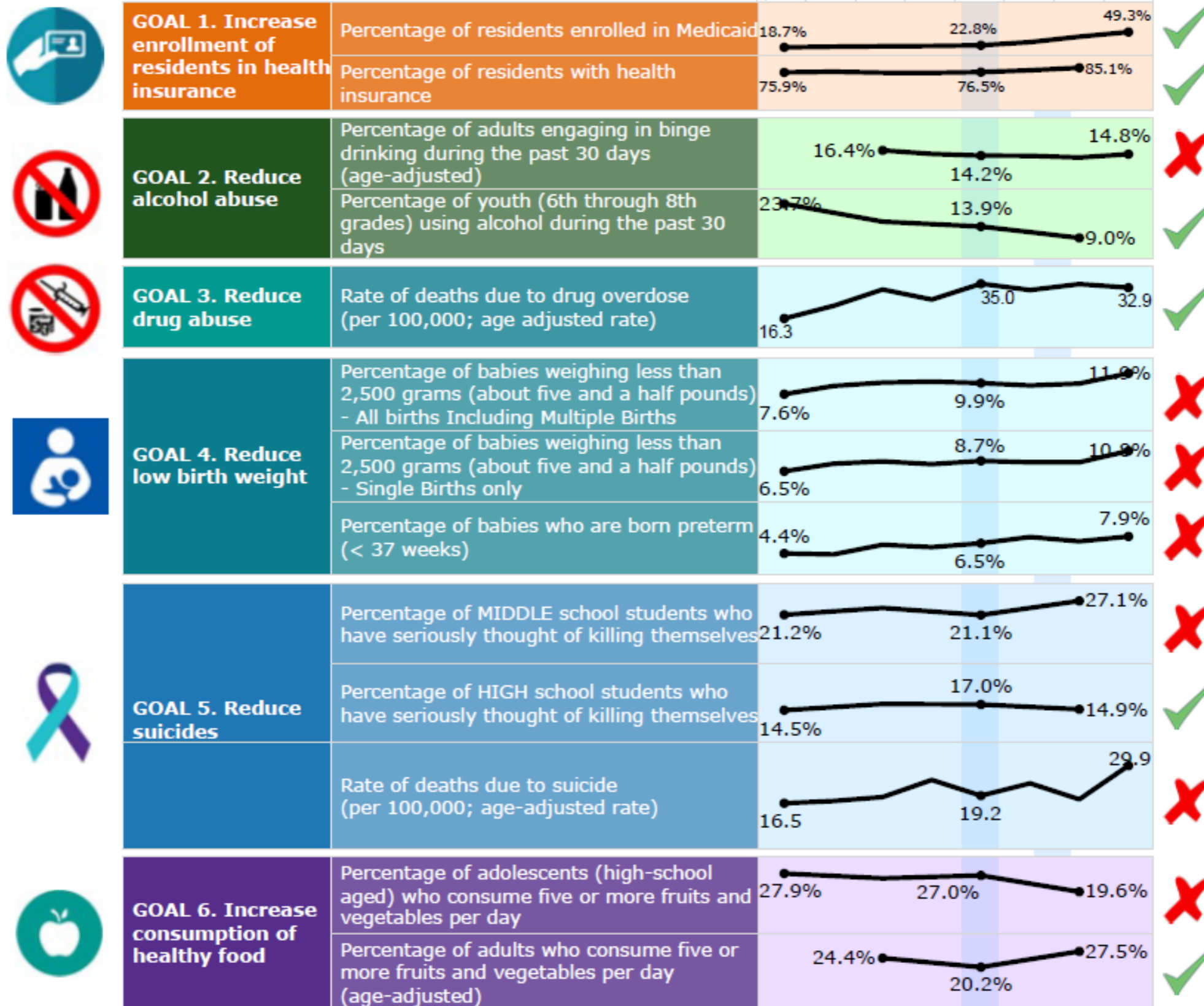
---

- Mobile Crisis Response Team
- Low Birth Weight Prevention Initiative
- Contracts amended to incentivize AHC participation

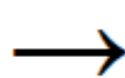


# Santa Fe County Health Action Plan Report Card

Click Icons for Details



Trend in Comparison to Baseline Year



Improving



Worsening



No change



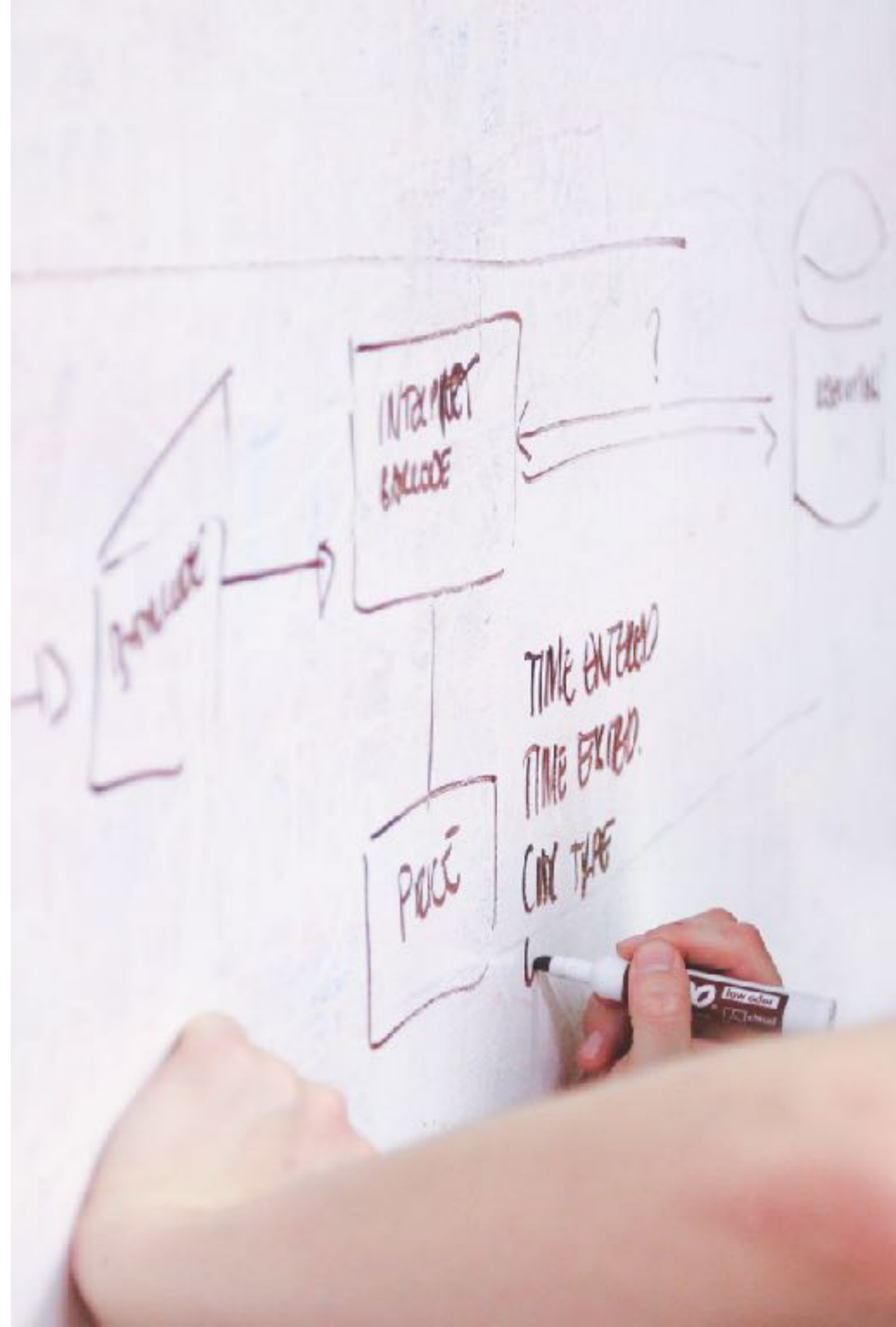
Baseline Year 2013

# HPPC and CSD

---

Recommended that Board of County Commissioners approve three-year plan for AHC

Dedicate funds to implement system changes



# ACCOMPLISHMENTS IN YEAR ONE

---

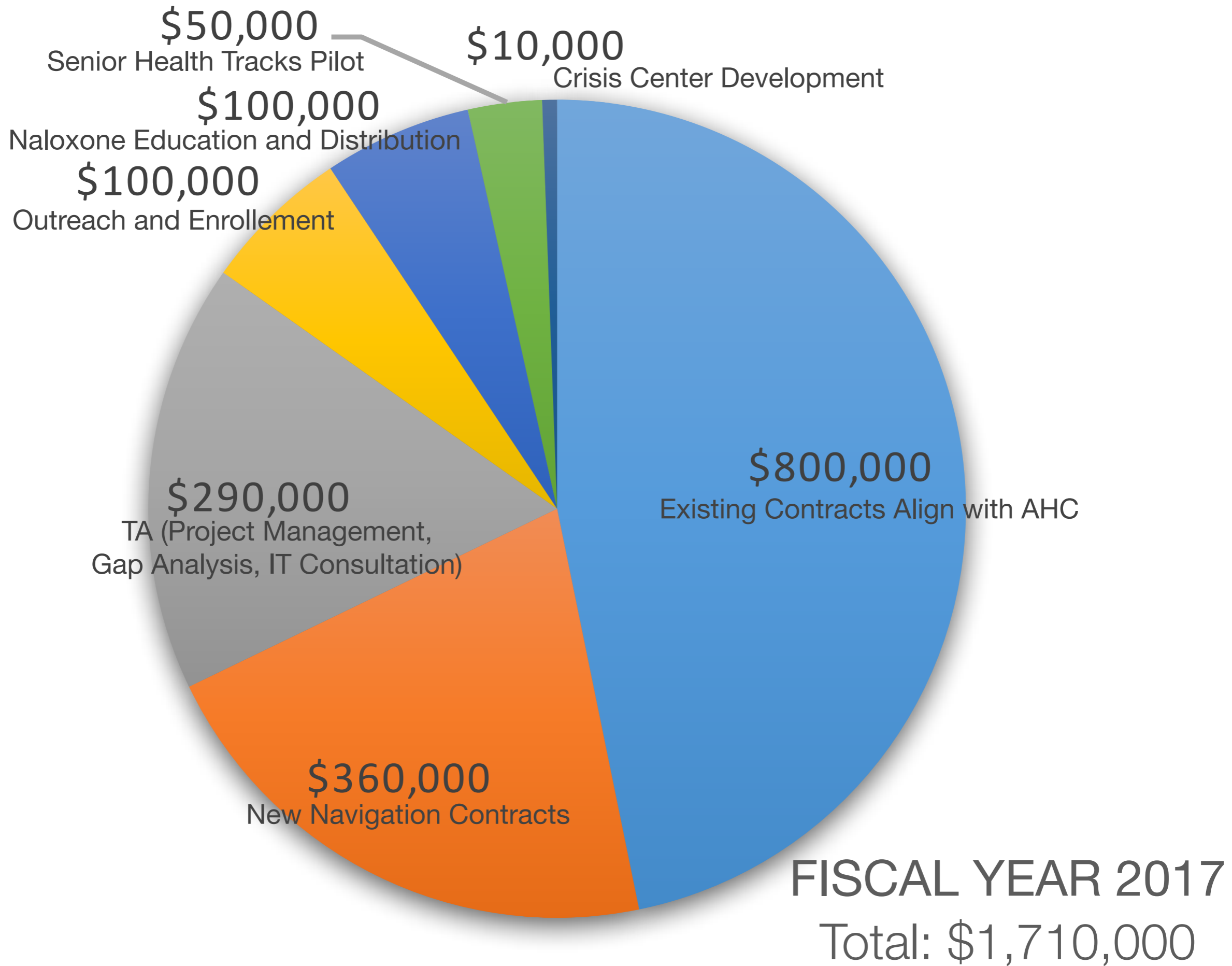
- AHC Project Manager: Elizabeth Peterson
- AHC Advisory Committee: Carol Luna-Anderson, Chair
- Gap Analysis
- IT Consultant
- Outreach and Enrollment/Health Care Advocate
- FQHCs: Clinic Contracts to Include Navigation/Flexible Funding
- Community Based Navigation Contracts/Flexible Funding
- SHARE New Mexico as Primary Resource Guide



# ACCOMPLISHMENTS IN BEHAVIORAL HEALTH

---

- Behavioral Health Program Manager: Alex Dominguez
- Detox Funding
- Narcan Distribution
- Crisis Center RFP





# A NEW MEXICAN MODEL IMPLEMENTED

KYRA OCHOA,  
HEALTH CARE ASSISTANCE  
PROGRAM MANAGER

# ACCOUNTABLE HEALTH COMMUNITY (AHC)

a New Mexican Model

Relationship Based

Resource Smart

Connected

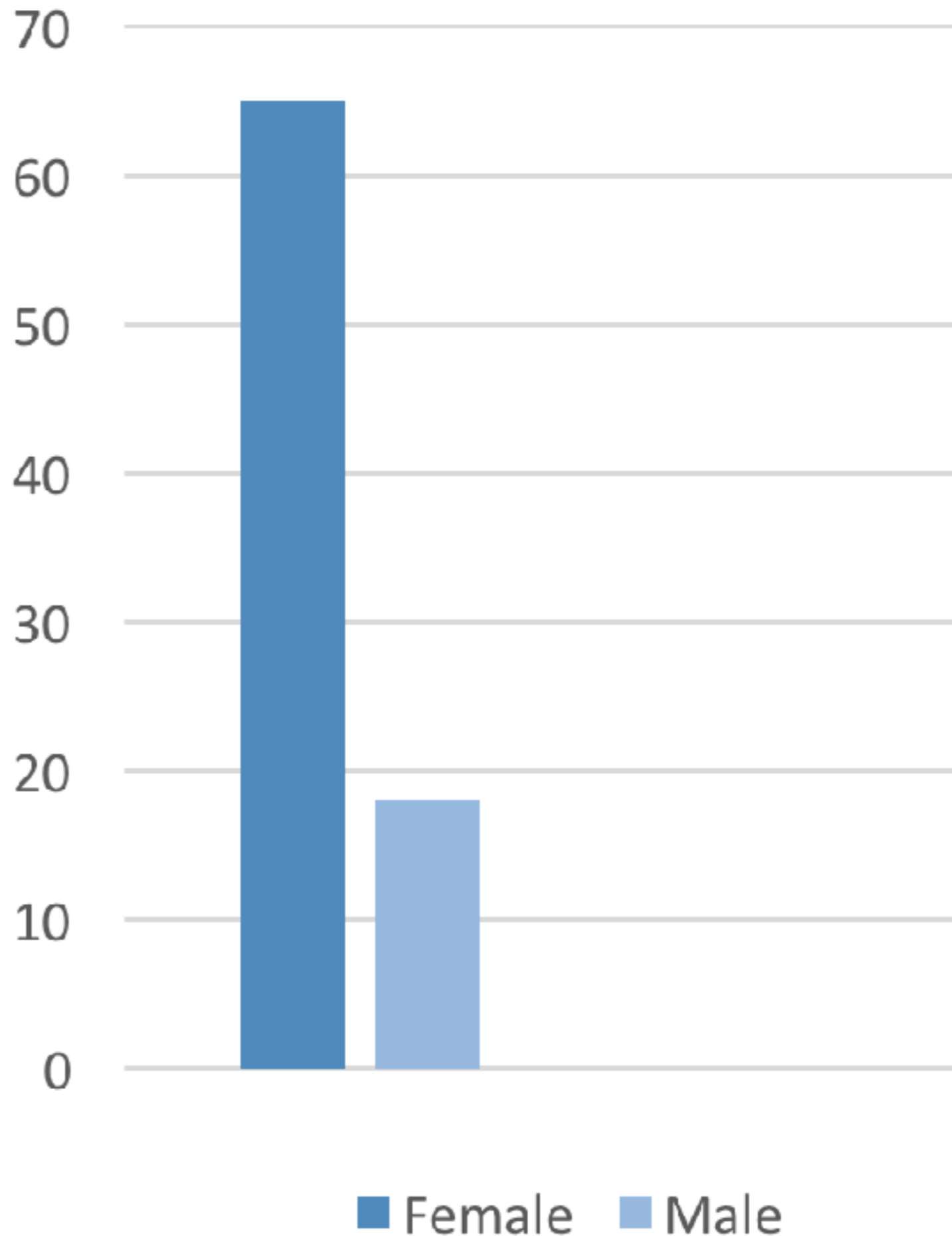
Ground Up



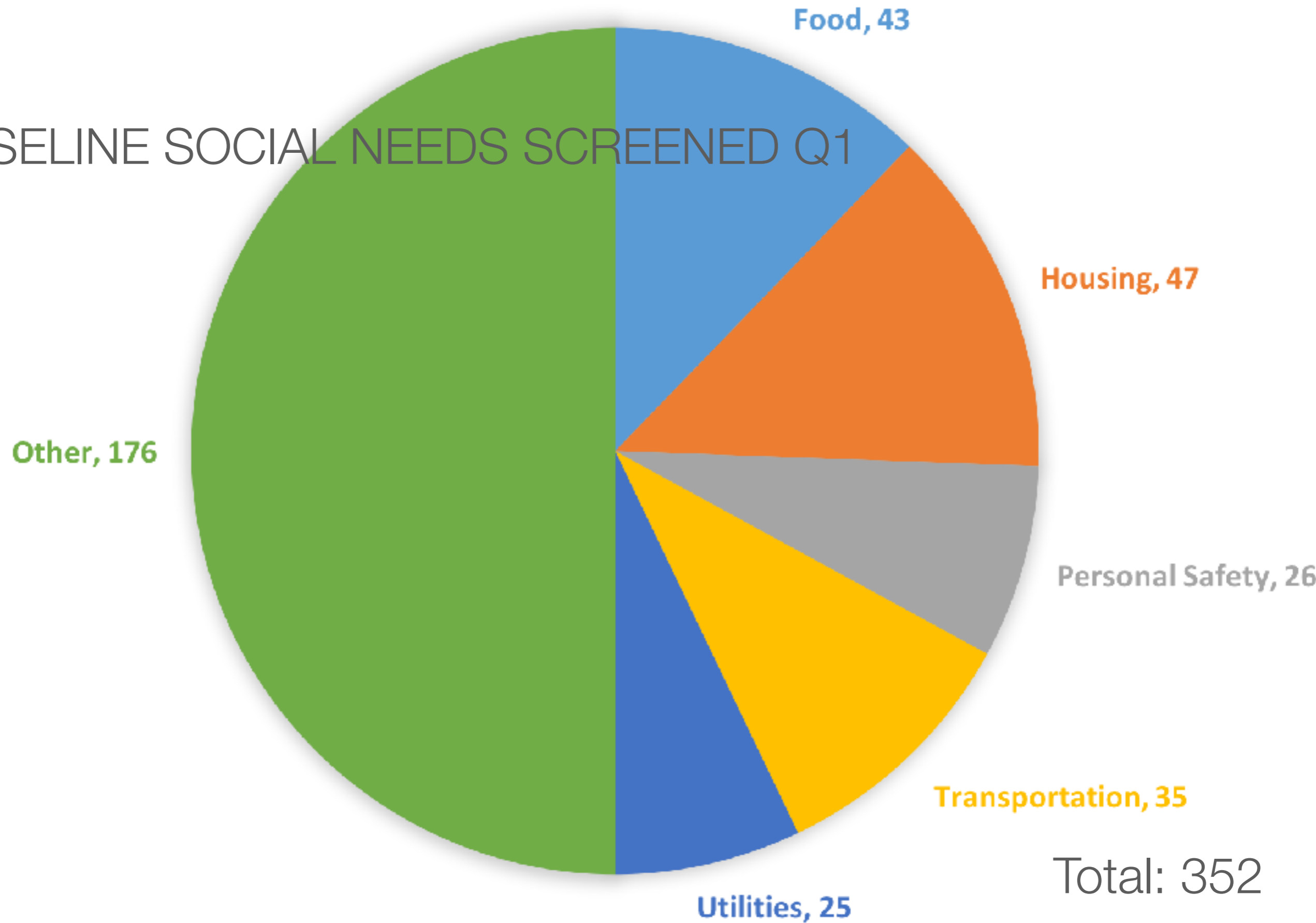
# PEOPLE SERVED

## Quarter 1

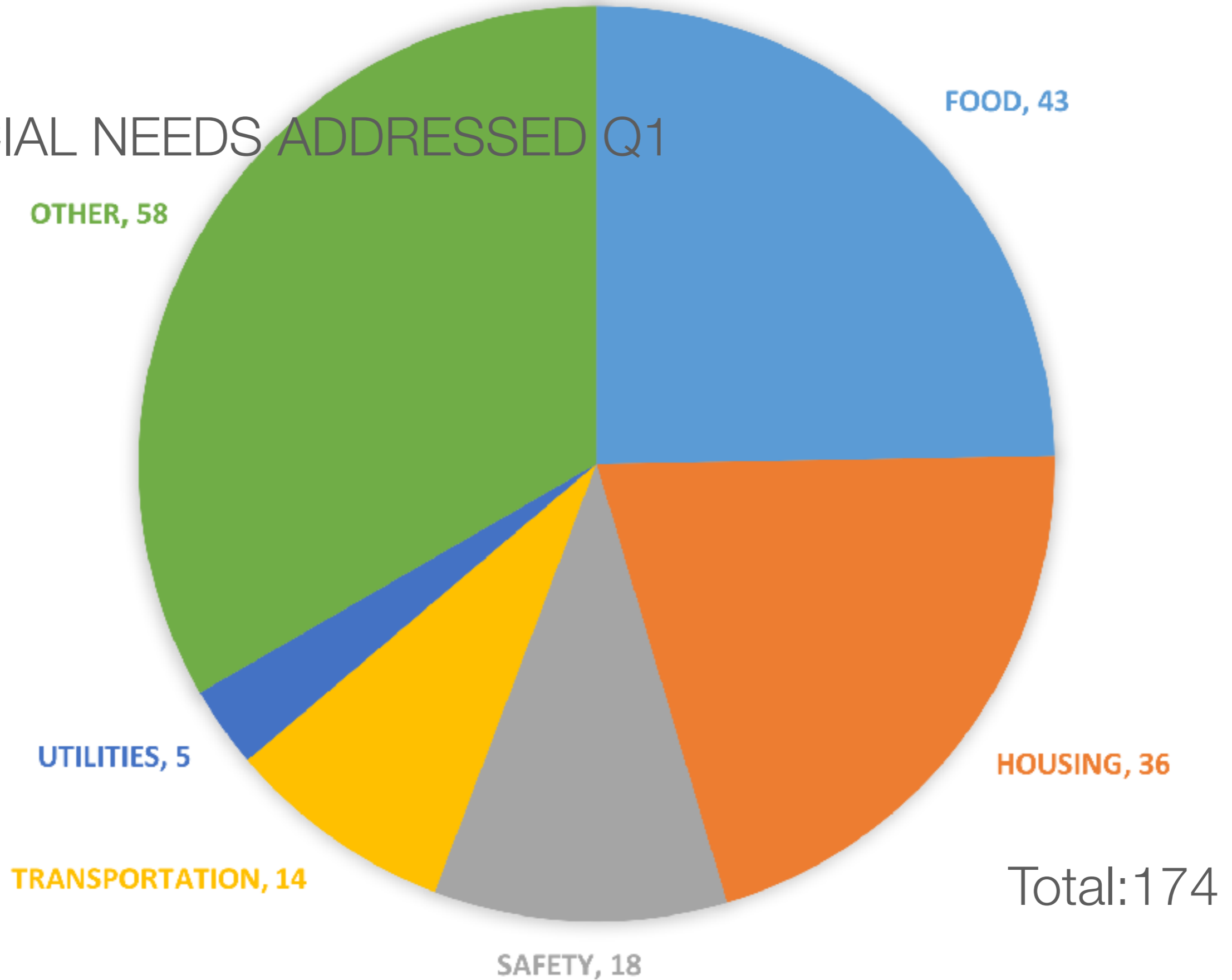
- 83 Individuals received navigation services
- 65 FEMALES
- 18 MALES
- Average age 33
- Range 16-66
- 3 individuals were served by multiple agencies
- The Emergency Department was utilized 141 times within the last year (self report)



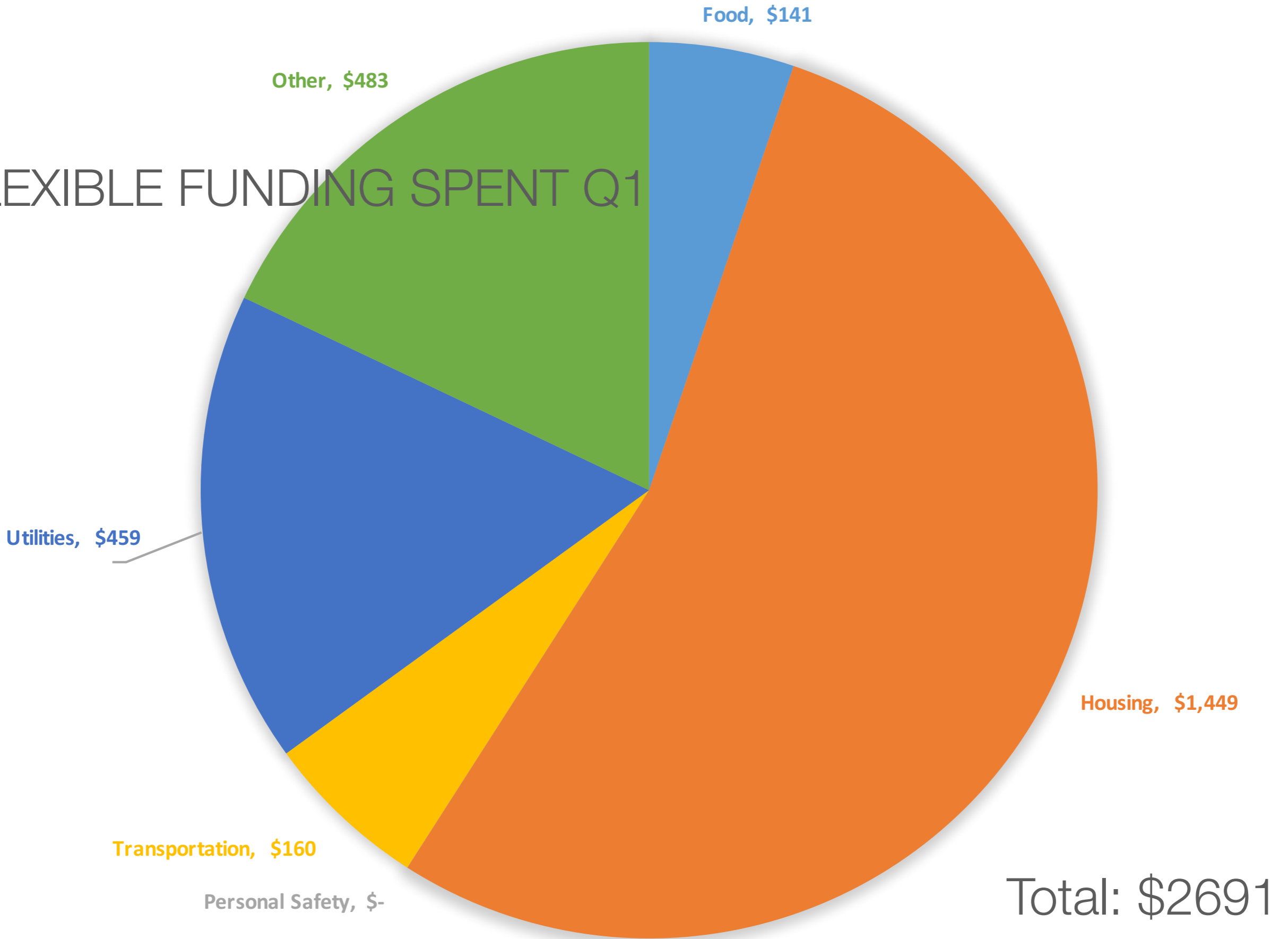
# BASELINE SOCIAL NEEDS SCREENED Q1



# SOCIAL NEEDS ADDRESSED Q1



# FLEXIBLE FUNDING SPENT Q1







LET'S HAVE A DISCUSSION:  
Navigation and the AHC

MARIA PEREZ, CONSULTANT



AN AHC FOR BEHAVIORAL HEALTH:  
The Santa Fe County Crisis Center

ALEX DOMINGUEZ,  
BEHAVIORAL HEALTH  
ADMINISTRATIVE MANAGER

# AN AHC FOR BEHAVIORAL HEALTH: BEHAVIORAL HEALTH CRISIS CENTER

**GOAL:** To provide a safe and secure place for Santa Fe County adults with behavioral health issues (mental illnesses and/or addictions) and their families and caregivers to find information and receive assistance in times of crisis, and to provide linkage with needed community services.


# WHAT ARE THE PRIMARY GOALS?

- To **reduce unnecessary admission to hospital emergency departments**
- To **prevent unnecessary detainment** of individuals in criminal facilities
- To provide immediate crisis management and de-escalation support
- To ensure **individuals are connected** with ongoing clinical and social support, including **navigation**, to prevent further crisis
- **Enhance communication and cooperation** between co-located services

# WHAT IS THE SERVICE ARRAY?



**LIVING ROOM  
MODEL WITH  
PEER SUPPORTS**



**RESIDENTIAL  
DETOXIFICATION  
TREATMENT SERVICES  
(CO-LOCATED)**



**MOBILE CRISIS  
RESPONSE TEAM**



**NAVIGATION CENTER  
AND INFORMATION**



**SAFE SOBERING SERVICES  
(CO-LOCATED)**

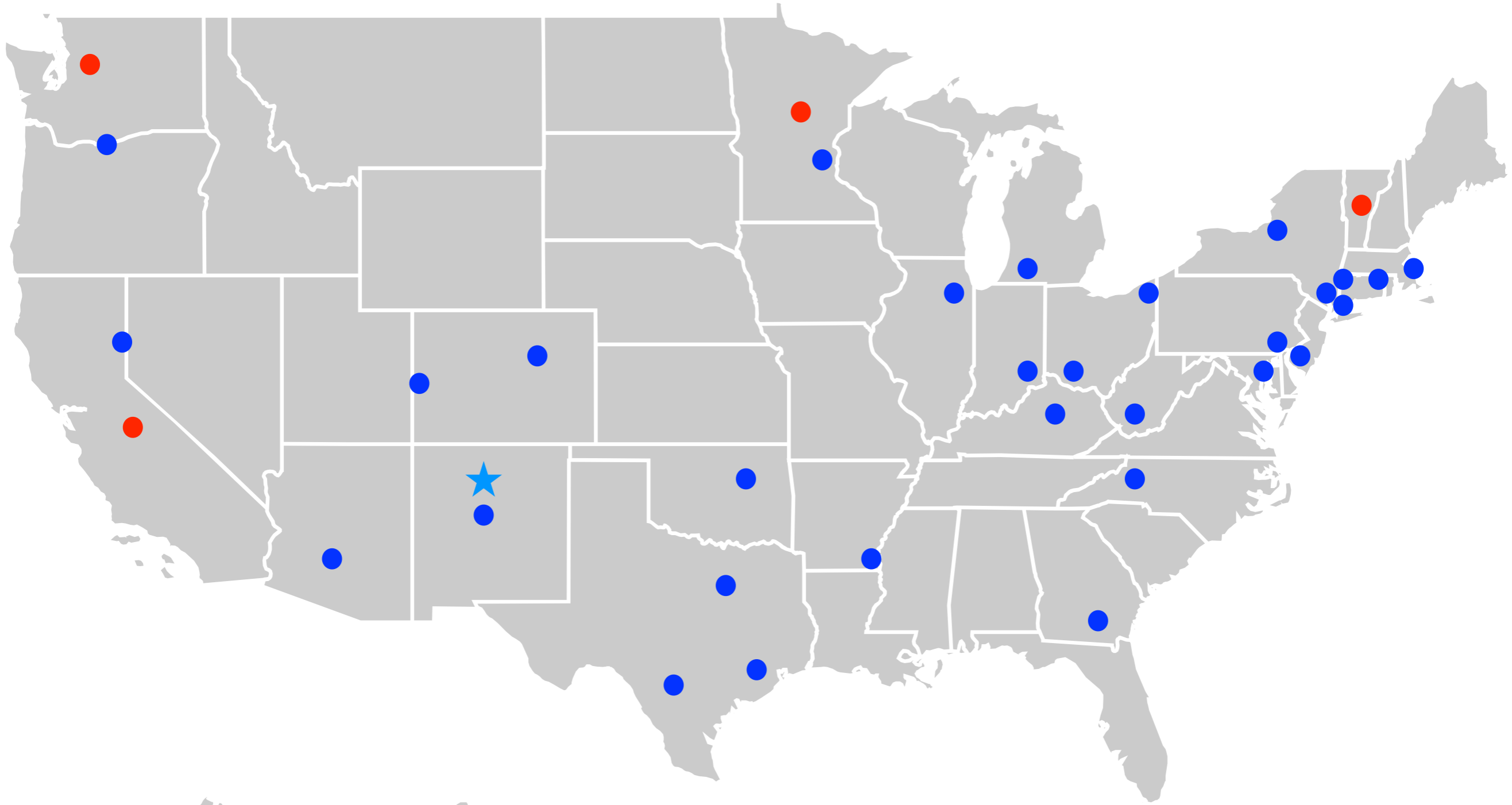


**CRISIS TRIAGE/ASSESSMENT  
BRIEF INTERVENTION/  
PHARMACY**



# THE AHC: A National Perspective

DAN NICKELSON,  
Health Care Financing and  
Organizational Consultant



# WHAT'S HAPPENING AROUND THE COUNTRY?

- CMS Accountable Health Communities
- ★ Santa Fe County AHC
- Accountable Communities for Health

# LOOKING TO THE FUTURE

RACHEL O'CONNOR,  
COMMUNITY SERVICES DIRECTOR





# LOOKING TO THE FUTURE

---

- Clinic Contracts
- IT System Procurement: January
- Navigation Meetings and Educational Series
- Evaluation Contract: How are we doing?
- Senior Health Tracks Pilot
- Behavioral Health Strategic Plan
- Santa Fe County Crisis Center
- Sustainability

Thank you!

