



JAYNES CORPORATION
GENERAL CONTRACTORS
2906 Broadway NE, PO Box 26841
Albuquerque, NM 87125
p 505.345.8591
f 505.345.8598
jaynescorp.com

FARMINGTON
900 Resource Avenue
Farmington, NM 87401
p 505.326.3354
f 505.325.6399

LAS CRUCES
1447 Certified Place Suite B-3
Las Cruces, NM 88007
p 575.526.6400
f 575.526.1495

DURANGO
65 Mercado Street, Ste 125
Durango, CO 81301
p 970.247.1831
f 970.247.0338

TEXAS
221 N. Kansas Street, Suite 700
El Paso, TX 79901
p 915.320.3739



5/30/2019

Dear Valued Resident, Business Owner or Community Member

RE: Griffin St. temporary road closure ~6/3/2019 - ~6/21/2019

As you are aware, Jaynes Corporation is currently constructing the Santa Fe County Admin Office Complex and Parking Structure at 100 Catron St.

In order to construct the Parking Structure, we need to utilize Griffin St. in its entirety for large 55-60 foot semi-trucks to pull in and deliver the large pre-cast panels. We received a permit from the City of Santa Fe to temporarily close Griffin St. from McKenzie North to Catron (traffic plan on reverse side). This letter is your notification of the closure.

There will be approximately ten (10) deliveries per day and work is forecasted to be complete on or before 6/21/2019. Griffin St. will be closed from 5am to 5pm Monday – Friday starting on or about 6/3/2019. In order to ensure this process is efficient, no cars can be parked on Griffin St. from 5am to 5pm for the entire duration of this delivery period. We will have flag persons directing the semi-truck traffic and each delivery could take up to one hour to complete.

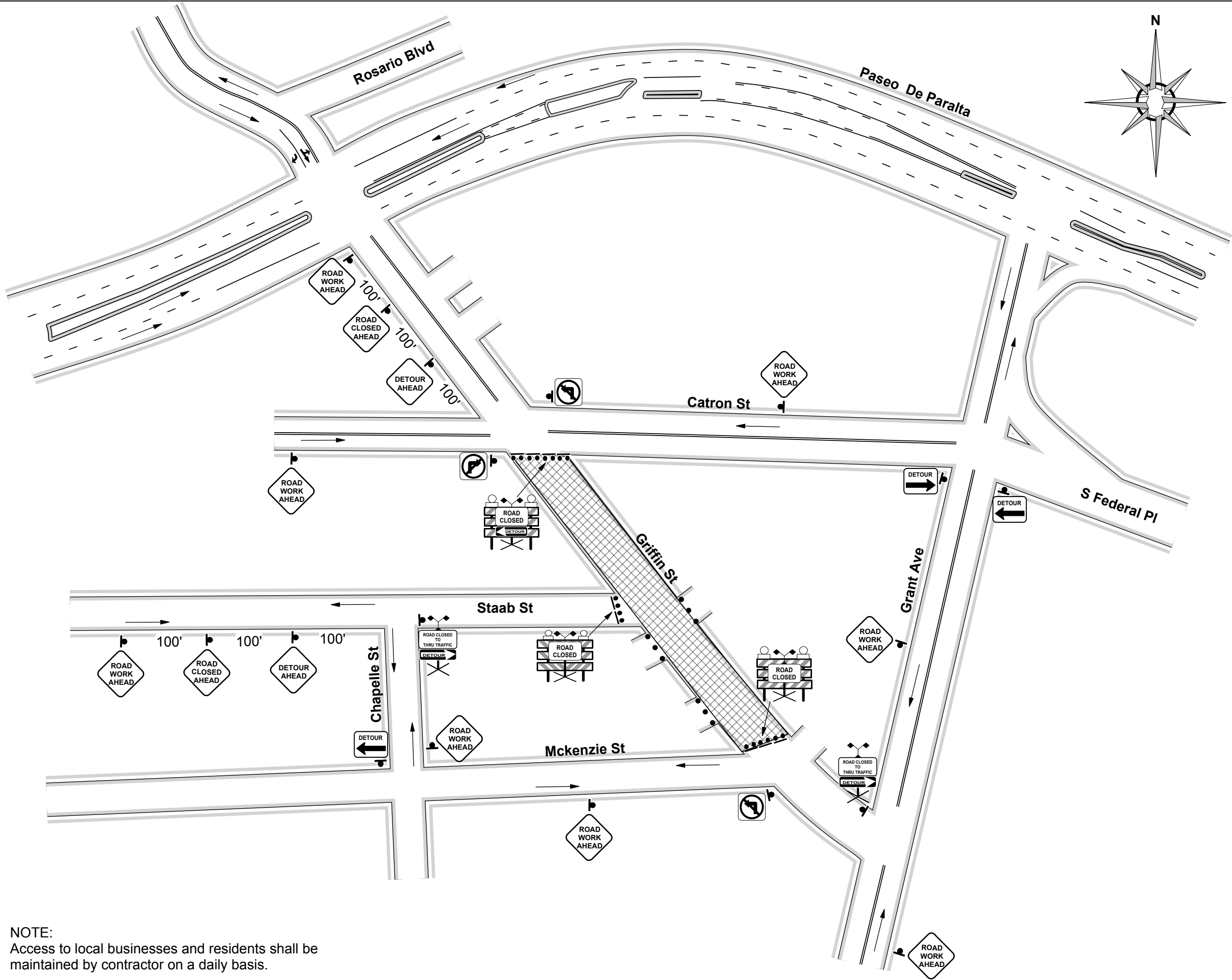
We appreciate your understanding in this matter and will do our best, when possible, to accommodate traffic movement and access for residents and businesses located on Griffin St. only. For all others, please seek an alternate route. Please know your safety is our priority.

Feel free to reference the Santa Fe County website:
<https://www.santafecountynm.gov/cac>

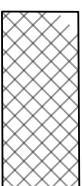
If you have any questions or concerns, please contact:

Sam Burns – Jaynes Senior Superintendent (505) 345-8591
Barbara Herrera – Jaynes Project Engineer (505) 345-8591

Thank you!



NOTE:
 Access to local businesses and residents shall be maintained by contractor on a daily basis.

Designed By Highway Supply TRAFFIC CONTROL SOLUTIONS (505) 345-8295	Author: Tim Gonzales x111	Date: 3/27/19	Sheet: 1/1	Designed For																
	Jaynes Corporation																			
Notes/Comments: - Posted Speed Limit: 20 MPH  = WORK ZONE - Adjustments to sign spacing & channelization devices, for vertical and horizontal curves, side roads and driveways shall be made in field. - All advanced warning signs should be double indicated when feasible. - NOT TO SCALE					Revisions <table border="1"> <thead> <tr> <th>No.</th> <th>Date</th> <th>By</th> </tr> </thead> <tbody> <tr><td> </td><td> </td><td> </td></tr> <tr><td> </td><td> </td><td> </td></tr> <tr><td> </td><td> </td><td> </td></tr> <tr><td> </td><td> </td><td> </td></tr> <tr><td> </td><td> </td><td> </td></tr> </tbody> </table>	No.	Date	By												
No.	Date	By																		
TCP Index # 037789																				