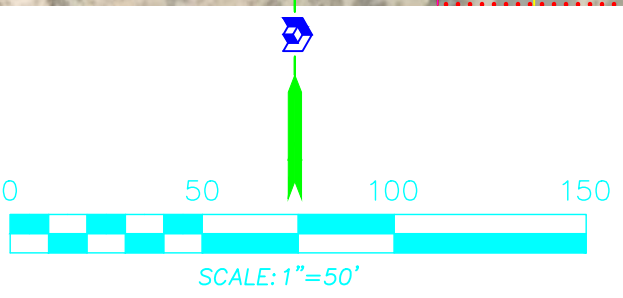
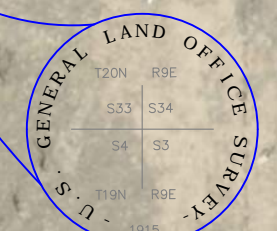


BOP STA. 10+00 CMR 113B =  
 STA. 80+88.80 CMR 113  
 LAT: 35°54'50.0463"  
 LON: 105°59'25.6401"

SE 1/4  
 S. 33, T. 19 N, R. 9 E.



COORDINATE AND DIMENSION INFORMATION				PLSS INFORMATION				INDEXING INFORMATION FOR COUNTY CLERK				PROJECT INFORMATION		
STATE PLANE ZONE: <b>NM-C</b>	GRID/GROUND COORDINATES: <b>GRID</b>	TYPE: <b>STANDARD</b>		LAND GRANT <b>NAMBE PUEBLO GRANT</b>				PROPERTY OWNER <b>NAMBE PUEBLO/PRIVATE</b>				CREW/TECH: <b>BO/SP/MA/KW</b>	DATE OF SURVEY <b>2015-2019</b>	
HORIZONTAL DATUM: <b>NAD83</b>		VERTICAL DATUM: <b>NAVD88</b>		SECTION <b>33</b>		TOWNSHIP <b>20 NORTH</b>		RANGE <b>9 EAST</b>		MERIDIAN <b>NM/PM</b>		SUBDIVISION NAME <b>N/A</b>		
CONTROL USED: <b>NATIONAL GEODETIC SURVEY</b>		DISTANCE ANNOTATION: <b>CRID TO GROUND: 1.0003727424</b>		BEARING ANNOTATION: <b>GEODETIC</b>		CITY <b>SANTA FE</b>		COUNTY <b>SANTA FE</b>		STATE <b>NM</b>		UPC <b>N/A</b>		
GROUND TO GRID: 0.9996273965		BASE POINT FOR SCALING AND/OR ROTATION: <b>N = 0</b>		E = 0		ELEVATION TRANSLATION: <b>±0.00'</b>		ELEVATIONS VALID: <b>NO</b>		OFFICE LOCATION: <b>3300 San Mateo Boulevard, NE Albuquerque, NM 87113</b>		DRAWN BY: <b>JK/MP</b>		CHECKED BY: <b>LM/RB</b>
										PHONE: <b>505.256.5700</b>		PSI JOB NO. <b>18-1100-NAMBE</b>		SHEET NUMBER <b>40 OF 66</b>
										FAX: <b>505.256.1900</b>				