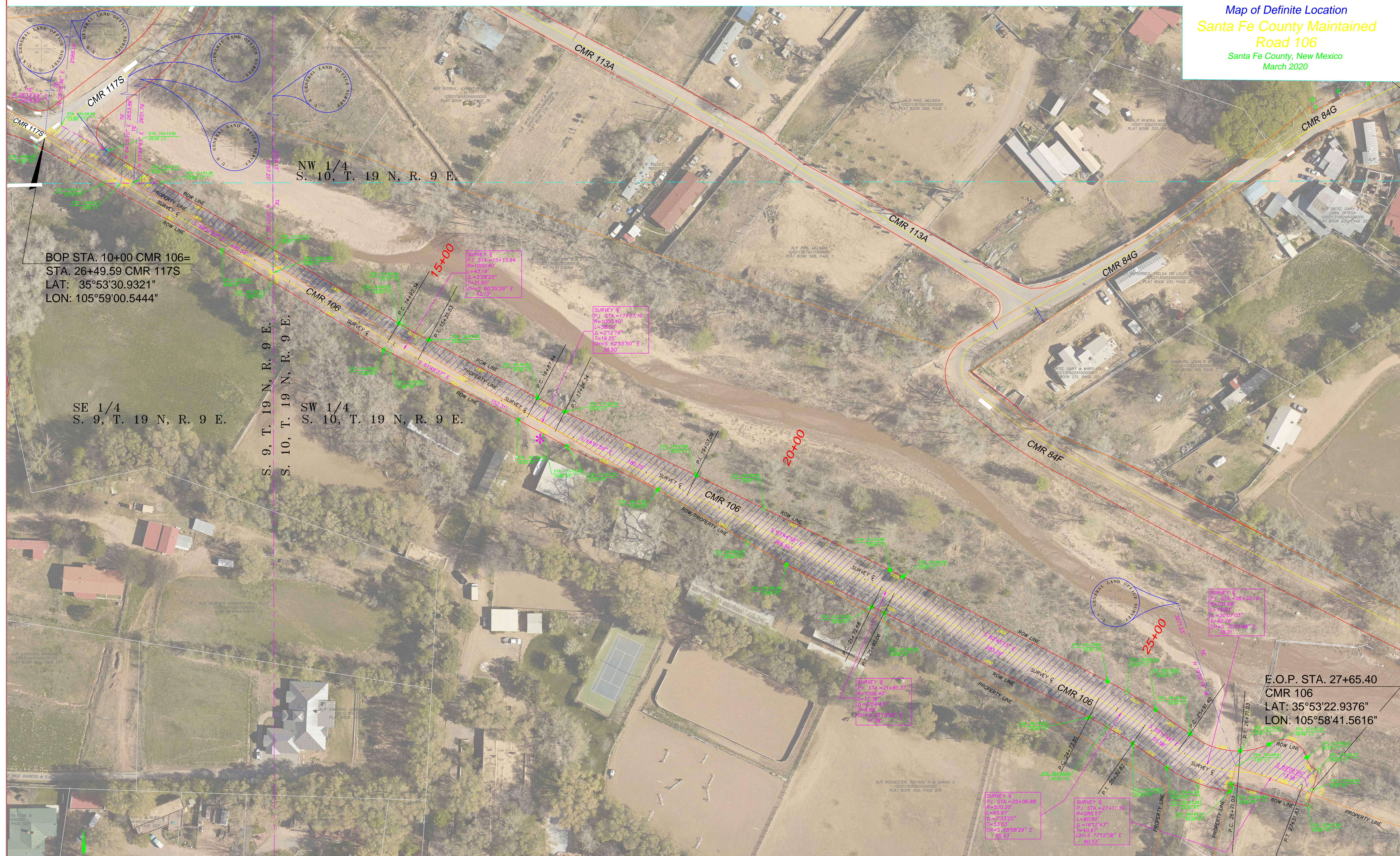


Map of Definite Location
 Santa Fe County Maintained
 Road 106
 Santa Fe County, New Mexico
 March 2020



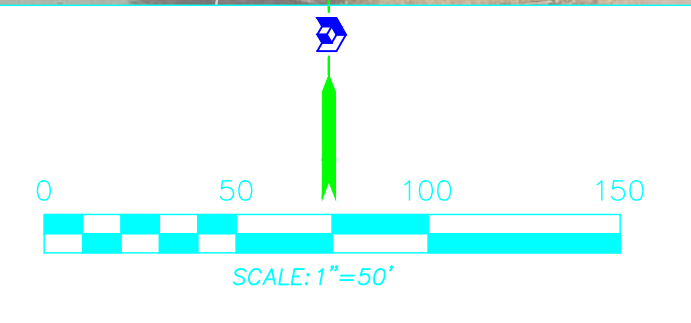
BOP STA. 10+00 CMR 106=
 STA. 26+49.59 CMR 117S
 LAT: 35°53'30.9321"
 LON: 105°59'00.5444"

SE 1/4
 S. 9, T. 19 N, R. 9 E.

S. 9, T. 19 N, R. 9 E.
 S. 10, T. 19 N, R. 9 E.

SW 1/4
 S. 10, T. 19 N, R. 9 E.

E.O.P. STA. 27+65.40
 CMR 106
 LAT: 35°53'22.9376"
 LON: 105°58'41.5616"



COORDINATE AND DIMENSION INFORMATION		PLSS INFORMATION	
STATE PLSS ZONE: NM-C	GRID/GROUND COORDINATES: GRID	LAND GRANT: NAMBE PUEBLO GRANT	INDEXING INFORMATION FOR COUNTY CLERK
VERTICAL DATUM: NAVD83	VERTICAL DATUM: NAVD88	SECTION: 9 & 10	PROPERTY OWNER: NAMBE PUEBLO/PRIVATE
CONTROL USED: NATIONAL GEODETIC SURVEY	BASE POINT FOR SCALING AND/OR ROTATION: N = 0	TOWNSHIP: 19 NORTH	SUBDIVISION NAME: N/A
COMBINED SCALE FACTOR: GRID TO GROUND: 1.0003727424	DISTANCE ANNOTATION: GROUND	RANGE: 9 EAST	CITY: SANTA FE
GROUND TO GRID: 0.9996273965	BEARINGS ANNOTATION: GEODETIC	COUNTY: SANTA FE	COUNTY: SANTA FE
	ELEVATION TRANSLATION: ±0.00'	MERIDIAN: NMMP	STATE: NM
		STATE: NM	UPC: N/A

PROJECT INFORMATION	
CREW/TECH: BO/SP/MA/KW	DATE OF SURVEY: 2015-2019
DRAWN BY: JK/MP	CHECKED BY: LM/RB
PSI JOB NO.: 18-1100-NAMBE	SHEET NUMBER: 8 OF 66

PRECISION SURVEYS, INC.

OFFICE LOCATION:
 9300 San Mateo Boulevard, NE
 Albuquerque, NM 87113
 505.856.5700 PHONE
 505.856.1900 FAX