

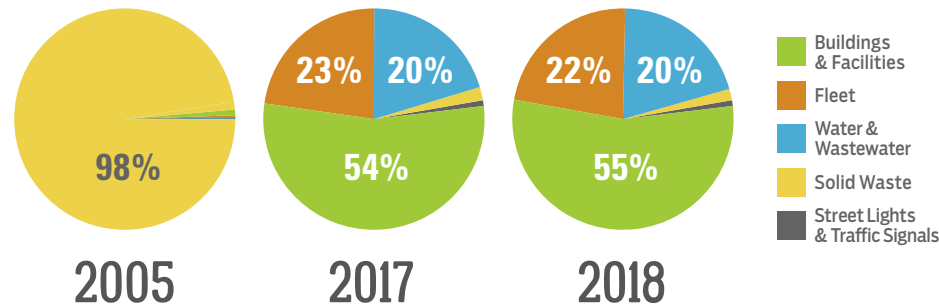


Santa Fe County Greenhouse Gas Emissions

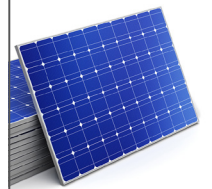
GOVERNMENT OPERATIONS, YEARS 2005, 2017 & 2018

Santa Fe County is committed to reaching net-zero greenhouse gas (GHG) emissions by 2050. As the first step towards that goal, the County developed GHG inventories of its operations for 2005, 2017, and 2018 across several sectors. This data will be used to prepare a comprehensive action plan to further reduce emissions and increase resilience in the face of climate change.

GHG EMISSIONS BY SECTOR



COUNTY BUILDINGS & FACILITIES PRODUCED **55%** OF GHG EMISSIONS IN 2018



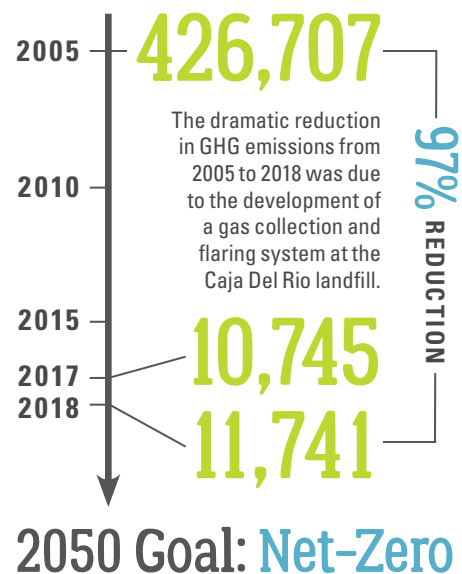
1.6

MEGAWATTS OF SOLAR HAVE BEEN INSTALLED TO HELP OFFSET THOSE EMISSIONS

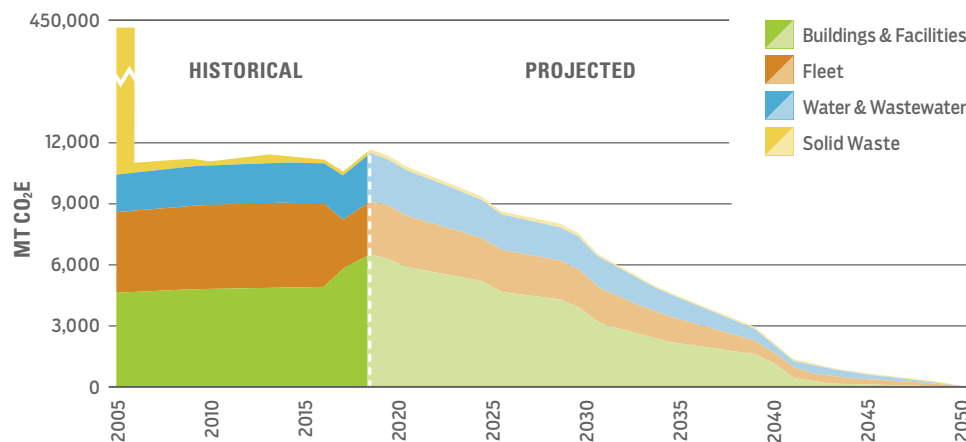


In 2017, Santa Fe County Commissioners adopted Resolution 2017-68, affirming its commitment to reaching net-zero GHG emissions by 2050.

TOTAL GHG EMISSIONS (MT CO₂E*)



SANTA FE COUNTY'S PATH TO NET-ZERO GHG EMISSIONS



* MT CO₂E: metric tons of carbon dioxide equivalent