

**Justin S. Greene**  
*Commissioner, District 1*

**Lisa Cacari Stone**  
*Commissioner, District 2*

**Camilla Bustamante**  
*Commissioner, District 3*



**Adam Fulton Johnson**  
*Commissioner, District 4*

**Hank Hughes**  
*Commissioner, District 5*

**Gregory S. Shaffer**  
*County Manager*

## MEMORANDUM

**Date:** April 15, 2026

**To:** Board of County Commissioners

**From:** Scott Kaseman, Project Manager III

**Via:** Gregory S. Shaffer, County Manager  
Leandro Cordova, Deputy County Manager  
Brian Snyder, Public Works Department Director  
Phillip “PJ” Montano, Facilities & Projects Division Director  
Curt Temple, Projects Section Manager

**Subject:** **April 28, 2026, BCC Meeting**  
Pojoaque Basin Regional Water System Quarterly Report for March 31, 2026

---

### QUARTERLY REPORT Pojoaque Basin Regional Water System March 31, 2026

The Pojoaque Basin Regional Water System (PBRWS) is the product of the AAMODT Settlement Agreement, which was reached between the United States of America, the State of New Mexico, Santa Fe County, the City of Santa Fe and the Pueblos of San Ildefonso, Nambe, Pojoaque, and Tesuque.

The System is currently being designed and constructed by the U.S. Department of the Interior’s Bureau of Reclamation and will have the capacity to deliver water from the Rio Grande to the four Pueblos and non-Pueblo customers in the Pojoaque Basin and Santa Fe County.

- Water will be diverted from the Rio Grande on Pueblo of San Ildefonso land above Otowi gauge.
- The PBRWS will provide up to 2,500 acre feet of water per year for consumptive use with the ability to expand in the future.
- The Bureau of Reclamation will build the system. The Regional Water System will consist of:
  - A Water Treatment Plant to treat water to meet Safe Drinking Water Act standards
  - 22 water storage tanks and 6 pump stations
  - A 4-mile-long raw water pipeline from the Rio Grande to the WTP
  - Potable water transmission and distribution system consisting of 151 miles of pipelines
  - Approximately 7 miles of new power lines or upgrade of existing lines

## **Design & Construction Status**

*Phase 1* is 100% designed and construction is 70%+ according to BOR. The Estimated Completion Date is August 2027.

Activity:

### **1. Water Treatment Plant Site**

- Structural construction across all major facilities is substantially complete.
- Work has transitioned to mechanical, electrical, and process system installation (Microfiltration/Ultrafiltration, Nanofiltration, piping, heating, ventilation and air conditioning, electrical).
- Interior finishes (paint, fixtures, casework) are well advanced.
- Raw Water Tanks and Clearwell Tanks are in active erection and outfitting phases.

**Status:** ~70–75% complete

**Focus:** System installation, integration, and commissioning preparation

### **2. Transmission & Distribution Pipelines**

- Major backbone pipeline installation is substantially progressed.
- Ongoing work includes:
  - o Remaining pipe installation (finished water distribution/finished water transmission segments).
  - o Valve, hydrant, and appurtenance installation.
  - o Utility potholing and conflict resolution.
  - o Hydrotesting and surface restoration.
- Increasing emphasis on tie-ins and system completion activities.

**Status:** ~60–65% complete

**Focus:** Final connections, testing, and restoration

### **3. Sites / Tanks**

- **Turtle Tank:** Structurally complete; chlorination building nearing completion.
- **El Rancho Tank:** Foundation complete; entering tank erection phase.
- **Industrial Park Tank:** Foundation complete; yard piping ongoing.
- **South Forebay Tank:** Early-stage earthwork and site development.
- **Booster Pump Station:** Structure complete; mechanical, electrical, plumbing and finishes ongoing.

**Status:** ~50–85% complete (varies by site)

**Focus:** Tank erection, mechanical systems, and site integration

### **4. Intake Site**

- Intake structure complete; work focused on mechanical, piping, and electrical systems.
- Ongoing activities include:
  - o Raw water piping installation and hydrotesting
  - o Collector well piping and structural completion
  - o Electrical installation (ongoing through mid-2026)

**Status:** ~75–85% complete

**Focus:** Electrical completion and pump/system integration

**Risk:** Dependency on external power (JMEC) for final commissioning

*Phase 2 Stage 1* was 100% designed. BOR only received 1 bid to construct Stage 1 that was more than double the engineer's cost estimate. Stages 1 and 2 will be combined into 1 bid package to hopefully encourage multiple larger contractors to bid on the project and provide better pricing.

*REVISED Phase 2 Stage 2* redesign plans are at 5%. Additional value engineering is being conducted to determine if the scope of work can be scaled back sufficiently to construct Phase 2 with the available budget and still meet the current demands of the intended service area. BOR estimates award for engineering services to complete revised design plans in June 2026.

*Phase 3* is at 30% design requiring input from the County as to location of the distribution lines based on landowner participation in the system. Staff are analyzing Well Election data and Survey results from the Office of the State Engineer to help make these determinations.

### **Easement Acquisition Status**

*Phase 1* – Approximately 60 Easements required - ROW Acquisition Consultant under contract and acquiring easements.

*Phase 2 Stage 1*– On hold pending realignment feasibility during Phase 2 value engineering process.

### **Interconnect and Reverse Flow Between PBRWS and Rest of County Water Utility**

A “T” junction has been designed into the Project near the Village of Tesuque to allow the PBRWS to connect with the Santa Fe Basin Water System. The County granted Bohannon Huston Inc. Notice to Proceed with engineering services to prepare a Preliminary Engineering Report to determine the best connection point with the Santa Fe System, the alignment to connect with the “T” junction and the feasibility of the Reverse Flow Capability. Expected delivery date of PER is June 30, 2026.

Benefits of Interconnect Between PBRWS and Rest of County Water Utility:

- Addresses critical need of the System regarding Water Quality
  - Disinfection byproducts (DBPs) can form if water sits in system for an extended period of time.
  - Interconnect ensures water quality without waste by allowing water to be timely used.
- PBRWS Operational, Maintenance, Repair, and Replacement (OMRR) Costs
  - *Initial* customer base in Pojoaque Basin is inadequate to support PBRWS's OMRR Costs at reasonable rates.
  - Interconnect allows up to 1,000 acre feet per year of County water to be used elsewhere in County until it is needed in the Pojoaque Basin.
  - Interconnect provides non-Basin customers to help shoulder PBRWS's OMRR Costs.

- Future reverse flow enhancements will allow the rest of the County system to provide backup supply to PBRWS

**Santa Fe County PBRWS Anticipated Costs**

**Santa Fe County 611(g) Contribution**

	<b>Total</b>
Corrected 611(g) Amount Including Upsize of Line and Infrastructure to the Interconnect with the Santa Fe Basin Water System - Indexed to 2024 2025 County Contributions to Date	\$24,400,000.00 <u>\$14,487,588.00</u>
<b>Outstanding Balance Due - Subject to Indexing</b>	<b>\$9,912,412.00</b>

**Interconnect with Santa Fe Basin Water System**

	<b>Total</b>
Engineering Design & Oversight Services for Interconnect & Reverse Flow Connection To the Santa Fe Basin Water System	\$800,000.00
Construct Interconnect with Santa Fe Basin Water System & Reverse Flow Infrastructure	TBD

**Phase 3 Distribution Lines & Connections**

	<b>Total</b>
Phase 3 Distribution Lines & Connections (Deferred: 2018 Dollars)	\$24,000,000.00

**Project Ceiling and Indexing Status**

Previously, the BOR Project Ceiling was \$522,000,000.00. In October 2024, the Project Ceiling was indexed to \$734 million using a project specific index. Assuming 3.5% escalation per year, by 2026 the Ceiling is estimated to be \$777.5 million.

BOR continues to work with the County and other partners on the details of the project specific indexing, Project Ceiling, non-contract costs that BOR believes to be in addition to the Project Ceiling, and plans to address such non-contract costs (which are estimated to be substantial).

## **Partners Agreements Status**

Counsel and staff for the County and Pueblos are finalizing the Operations Agreement and are preparing a schedule of all documents and activities necessary to assume control of the System. The Stakeholders are currently working to finalize the commissioning and transition plan for turning over operations to the Regional Water Authority once the system is complete.

## **Communications and Coordination Status**

The County and Office of the State Engineer hosted an Open House in March in Tesuque and one in El Rancho in April that were very well attended. Landowners received information and assistance with preparing the *Acceptance / Well Election Form* required to connect to the system once service is available. Additional Open Houses are planned for 2026 for Pojoaque, Nambe and Tesuque. Residents in the service area can expect mailouts regarding construction notices and encouragement to file their *Acceptance/Well Election Forms* with the US District Court opting to connect with the system. These filings will be mapped to help determine the locations of the distribution lines in order to serve the most customers with the limited construction budget.

County staff conduct biweekly meetings with BOR's Project Managers, host multiple monthly meetings with all Project partners and attend the weekly on-site construction meeting at the Water Treatment Plant.

**County Road 84 in El Rancho will be subject to rolling closure from Entrada El Rancho west to the "Y" intersection with County Road 84B to allow for the construction of a main distribution waterline and other water system infrastructure.** Precautions are being taken to allow for access to homes and for emergency services. Residents can visit *AAMODT UPDATES* and *current construction locations* on the County's website: <https://www.santafecountynm.gov/> for the daily update regarding the precise location of the closure so they will know which way to turn out of their driveway in the morning. The detour to the west will be via County Road 84 to NM-502.

## **Additional PBRWS project and Aamodt Settlement information can be found here:**

<https://www.santafecountynm.gov/public-works/aamodt>

<https://www.usbr.gov/uc/progact/PojoaqueBasinRegionalWaterSystem/index.html>

## **Santa Fe County Point of Contact:**

Scott Kaseman, Santa Fe County Project Manager

505-992-9887

[skaseman@santafecountynm.gov](mailto:skaseman@santafecountynm.gov)

## **ATTACHMENTS:**

Exhibit A – Bureau of Reclamation Quarterly Report

Exhibit B – Bureau of Reclamation Baseline Schedule



# United States Department of the Interior

BUREAU OF RECLAMATION

Albuquerque Area Office

555 Broadway NE, Suite 100

Albuquerque, NM 87102-2352



IN REPLY REFER TO:

ALB-100

2.2.421

VIA U.S. AND ELECTRONIC MAIL

Mr. Gregory Shaffer  
Santa Fe County Manager  
102 Grant Avenue  
Santa Fe, NM 87501  
gshaffer@santafecountynm.gov

Subject: Pojoaque Basin Regional Water System (PBRWS) Quarterly Report – Fiscal Year (FY) 2026  
First Quarter (Q1)

Dear Mr. Shaffer:

Thank you for your continued support for the PBRWS Project. The attached Aamodt expenditure report shows expenditures for the first quarter of FY 2026 for different categories which total \$30,506,354.32. Total Aamodt Project expenditures through December 2025 were \$314,757,106.22. Approximately, \$239,114,000 out of \$357,500,000 has been invoiced by CDM Smith for Phase 1, through December 2025.

## **PBRWS Construction Status Update**

**Project Status Summary – PBRWS Reporting Period:** October 2025 through December 2025

---

### **1. Water Treatment Plant Site**

- Structural construction across all major facilities is substantially complete.
- Work has transitioned to mechanical, electrical, and process system installation (Microfiltration/Ultrafiltration, Nanofiltration, piping, heating, ventilation and air conditioning, electrical).
- Interior finishes (paint, fixtures, casework) are well advanced.
- Raw Water Tanks and Clearwell Tanks are in active erection and outfitting phases.

**Status:** ~70–75% complete

**Focus:** System installation, integration, and commissioning preparation

---

### **2. Transmission & Distribution Pipelines**

- Major backbone pipeline installation is substantially progressed.
- Ongoing work includes:
  - Remaining pipe installation (finished water distribution/finished water transmission segments).
  - Valve, hydrant, and appurtenance installation.
  - Utility potholing and conflict resolution.

---

INTERIOR REGION 7 • UPPER COLORADO BASIN

COLORADO, NEW MEXICO, UTAH, WYOMING

- Hydrotesting and surface restoration.
- Increasing emphasis on tie-ins and system completion activities.

**Status:** ~60–65% complete

**Focus:** Final connections, testing, and restoration

**3. Sites / Tanks**

- **Turtle Tank:** Structurally complete; chlorination building nearing completion.
- **El Rancho Tank:** Foundation complete; entering tank erection phase.
- **Industrial Park Tank:** Foundation complete; yard piping ongoing.
- **South Forebay Tank:** Early-stage earthwork and site development.
- **Booster Pump Station:** Structure complete; mechanical, electrical, plumbing and finishes ongoing.

**Status:** ~50–85% complete (varies by site)

**Focus:** Tank erection, mechanical systems, and site integration

**4. Intake Site**

- Intake structure complete; work focused on mechanical, piping, and electrical systems.
- Ongoing activities include:
  - Raw water piping installation and hydrotesting
  - Collector well piping and structural completion
  - Electrical installation (ongoing through mid-2026)

**Status:** ~75–85% complete

**Focus:** Electrical completion and pump/system integration

**Risk:** Dependency on external power (JMEC) for final commissioning

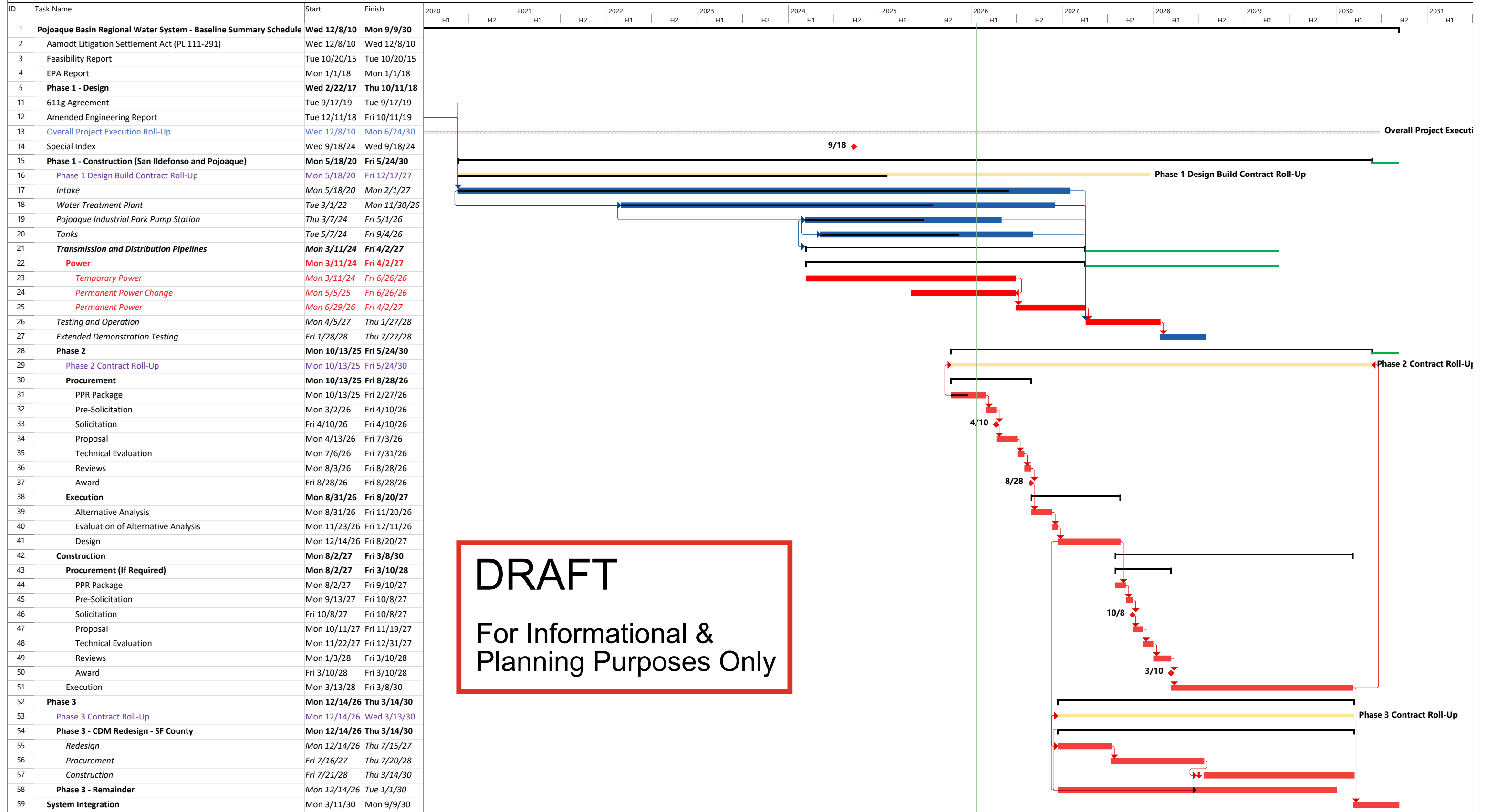
**Table 1. Aamodt Project expenditures: FY26, Quarter (Qtr) 1**

<b>FY26 Qtr 1 Totals by Category</b>	<b>Labor</b>	<b>Denver Technical Service Center</b>	<b>Contracts</b>	<b>Operational Expenses</b>	<b>Total</b>
Project/Contract Management	\$366,064.33	\$65,658.93	\$1,421,036.19	(\$296,318.56)	\$1,556,440.89
Feasibility	\$0.00	\$0.00	\$0.00	\$0.00	\$0.00
Environmental Compliance	\$270.07	\$0.00	\$0.00	\$0.00	\$270.07
Lands/Realty	\$0.00	\$0.00	\$36,381.64	(\$4,584.09)	\$31,797.55
Design	\$114,448.97	\$206,071.97	\$0.00	\$0.00	\$320,520.94
Rio Tesuque	\$0.00	\$0.00	\$0.00	\$0.00	\$0.00
San Ildefonso	\$0.00	\$0.00	\$0.00	(\$36.00)	(\$36.00)
Construction	\$0.00	\$0.00	\$31,258,271.72	(\$2,660,910.85)	\$28,597,360.87
<b>Total</b>	<b>\$480,783.37</b>	<b>\$271,730.90</b>	<b>\$32,715,689.55</b>	<b>(\$2,961,849.50)</b>	<b>\$30,506,354.32</b>

Should you have any questions, please contact Albert (Albie) Day at 505-917-2307 or email [aday@usbr.gov](mailto:aday@usbr.gov). Individuals who are deaf, blind, hard of hearing, or have a speech disability may dial 711 (TTY, TDD, or TeleBraille) to access telecommunications relay services.

Sincerely,

Albert (Albie) Day  
Project Manager



**DRAFT**  
For Informational & Planning Purposes Only