

UPDATE ON THE STATE'S BEHAVIORAL HEALTH TRUST FUND (SB1) AND BEHAVIORAL HEALTH REFORM AND INVESTMENT ACT (SB3)

*AND PLANNED REGIONAL INTENT TO APPLY FOR
THE STATE'S EARLY ACCESS NOTICE OF
FUNDING OPPORTUNITY (NOFO)*

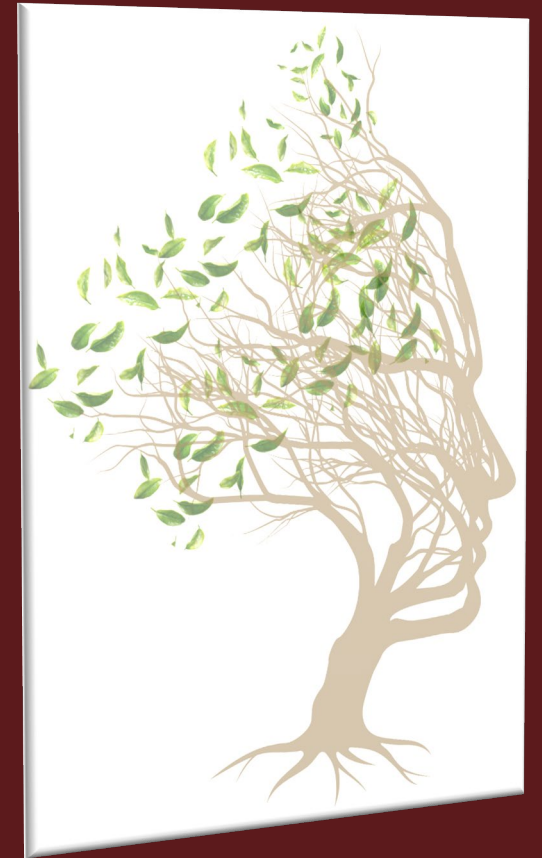
ANNE RYAN, COMMUNITY SERVICES DIRECTOR

BOARD OF COUNTY COMMISSIONERS MEETING

DECEMBER 2, 2025

SENATE BILL 1

- SB1 established a Behavioral Health Trust Fund and Behavioral Health Program Fund.
 - Trust Fund seeded with \$1 billion.
 - Annual distribution to Program Fund of 5% of average year-end market value for previous three calendar years.
- Subject to appropriation by the Legislature, the Program Fund can be used for the following specific eligible purposes:
 - (1) mental health and substance misuse treatment, intervention and prevention;
 - (2) necessary infrastructure, technology and workforce supports that facilitate the delivery of behavioral health services and programs;
 - (3) matching funds for federal, local and private money and grants related to behavioral health services and programs;
 - (4) offsetting costs incurred to comply with federal requirements related to behavioral health services and programs; and
 - (5) implementation of regional behavioral health plans throughout the state.



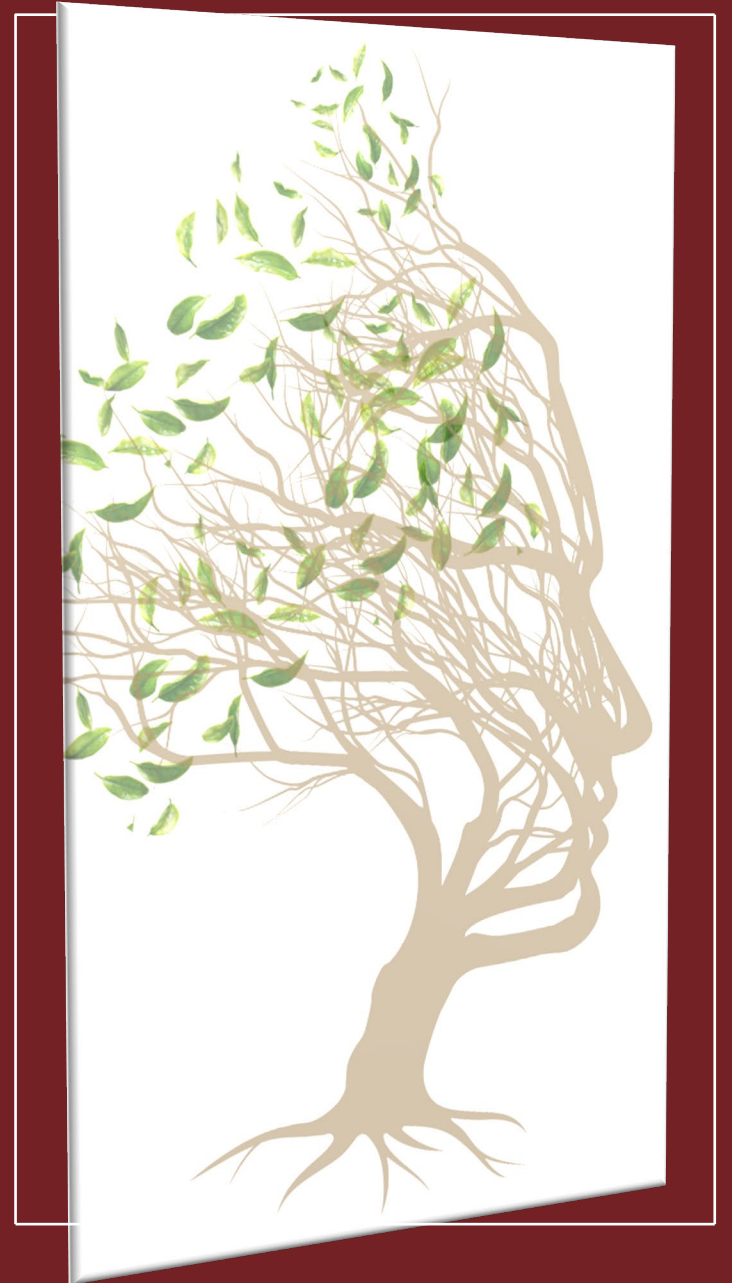


SENATE BILL 3: STATE BEHAVIORAL HEALTH REFORM AND INVESTMENT ACT (AKA "BHRIA")

- Officially commenced on June 21, 2025.
- The State Behavioral Health Executive Committee has been formed and is comprised of 7 members (Heads of HCA, BHSD, MAD, AOC + 3 Citizen SMEs) with duties to:
 - designate regions;
 - coordinate statewide reform efforts through a regionalized approach based on regional needs assessments;
 - reviews/approves regional plans and establishes a funding strategy;
 - monitors implementation; and
 - develops an overall project management plan under the State's Health Care Authority (HCA).
- To date, a State-plan for regional process has been devised and adopted by the State Committee. Regions mirror judicial districts and include Nations, Tribes, and Pueblos.
- Santa Fe County is part of "Behavioral Health Region One," which includes 14 separate and unique governments – 7 Tribal and 7 Non -- along with vast and varied geography.
- August 18, 2025, State letter to "County Managers and Tribal Leaders" required regions to identify an "Accountable Entity" to shoulder regional rollout of State process outlined in the letter that ultimately culminates with local and state approved four-year regional behavioral health plans to be submitted not later than June 30, 2026.

WHO IS REGION ONE'S "ACCOUNTABLE ENTITY" AND WHAT ARE THE NEXT STEPS?

- Santa Fe County volunteered to be and is now officially Region One's initial Accountable Entity as designated by the State.
- Requirements between now and June 30, 2026 include establishing MOUs with regional partners, participation in a variety of State meetings, hosting of in-person workshops facilitated by UNM to identify regional behavioral health priorities, participation in virtual community listening sessions facilitated by the New Mexico Alliance of Health Councils, monthly State reporting, and the development of a four-year regional behavioral health plan approved at the local and State level not later than June 30, 2026.
- Once this occurs, the region may then apply for funding from the Program Fund in accordance with priorities identified in an approved regional plan.
- Administrative Office of the Courts (AOC) oversees development of regional plans which are ultimately approved by the State Executive Committee.



HOW WILL WE ENSURE COMMUNITY ENGAGEMENT AND HOW CAN FOLKS STAY INFORMED?

- Press releases, social media posts, regional messaging, community presentations, and more will occur to help spread the word.
- Information is power. Please take the time to [walk through our website](#) which allows for a much deeper dive, is something we work to keep current, and provides ways to get and stay engaged .



PLANNED REGIONAL INTENT TO APPLY FOR THE STATE'S EARLY ACCESS NOTICE OF FUNDING OPPORTUNITY (NOFO)

- NM Health Care Authority issued NOFA on November 4, 2025.
- Total of \$26 million to be divided among 13 regions.
- Applications due December 19, 2025.
- Applications must fall under any of the following four categories: Residential Treatment Continuum of Care; Crisis Continuum of Care; Medication Assisted Treatment (MAT) for Justice-Involved Individuals; or Prenatal and Perinatal Substance Use Disorder (SUD) Treatment Programs.
- Awarded funds must be expended not later than June 30, 2027.





PLANNED REGIONAL INTENT TO APPLY FOR THE STATE'S EARLY ACCESS NOFO, CONT.

- Eligible applicants are exclusive to the region's Accountable Entity (but may include a single provider to partner with the Accountable Entity) to address regional needs under one of the four categories.
- Region One's intent:
 - Apply under the category of "Crisis Continuum of Care"; but
 - Issue a non-restrictive, fair and open solicitation under the same category to all providers serving (or capable of serving) Region One.
- Crisis Continuum of Care Examples
 - Crisis Triage Centers (CTCs) • Mobile Crisis Treatment Services (MCTs) • Assertive Community Treatment (ACT) • Development or expansion of Certified Community Behavioral Health Clinics (CCBHCs) • Other crisis services focused on increasing immediate access and reducing ED utilization.

QUESTIONS?

