

Santa Fe Clerk's Office

Katharine E. Clark | County Clerk



VOTING SITE GUIDE

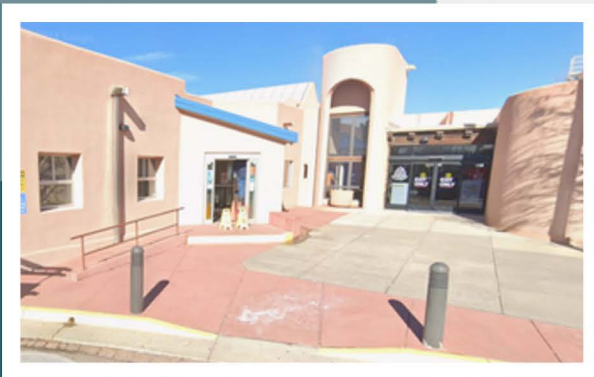


FORT MARCY REC. COMPLEX

490 Bishops Lodge Rd, Santa Fe, NM 87501

ABOUT THE PROPERTY

ADA Parking on South side of Building
Parking Lot Entrance is North from Artist Rd
Voter Entrance at South side of Building



Physical Features

(3) ADA parking



20 steps to door

Accessible
Bathrooms



CALL THE CLERK'S OFFICE

 (505)986-6280

SantaFe.vote 
clerk@santafecountynm.gov 