

b) History

The Glorieta MDWCA sewer collection system was installed in the 1960's and consists of 6-inch and 8-inch vitrified clay pipe (VCP) and manholes constructed from concrete, brick, and CMP. The Village completed replacement of the sewer main between the bar screen and Interstate 25 in the Year 2000 but no other significant improvements to the system have been completed since it was originally constructed.

Appendix B contains a copy of design drawings dated October 1960 for the existing sewer system facilities that were provided by Glorieta MDWCA staff. Some of the information in the drawings is incomplete so these drawings are not believed to be Record or "As-Built" drawings.

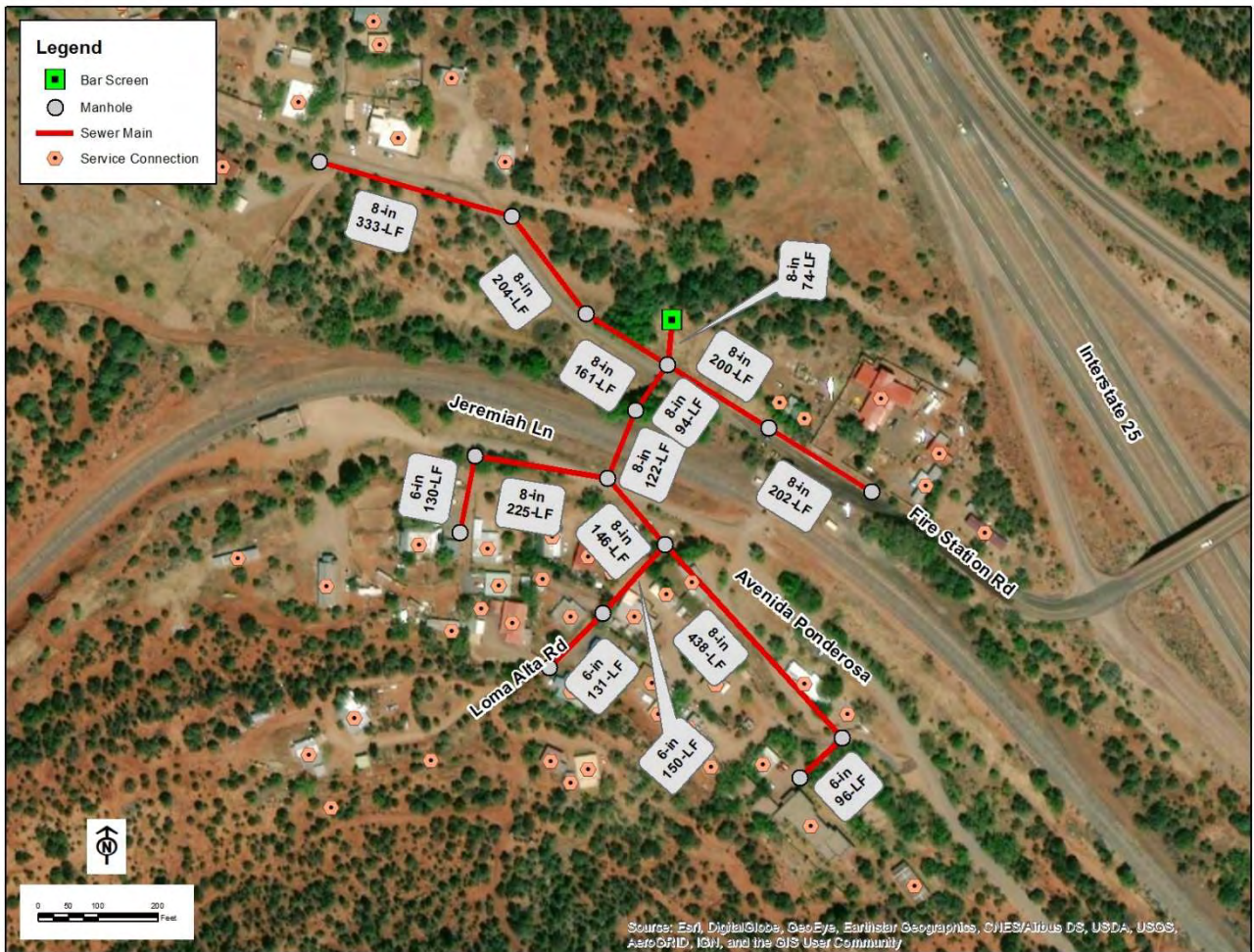


Figure 2: Glorieta MDWCA – Existing Sewer Collection System and Customers