

NOTICE OF DETERMINATION NOT TO UPDATE LAND USE ASSUMPTIONS, CAPITAL IMPROVEMENTS PLAN OR IMPACT FEES

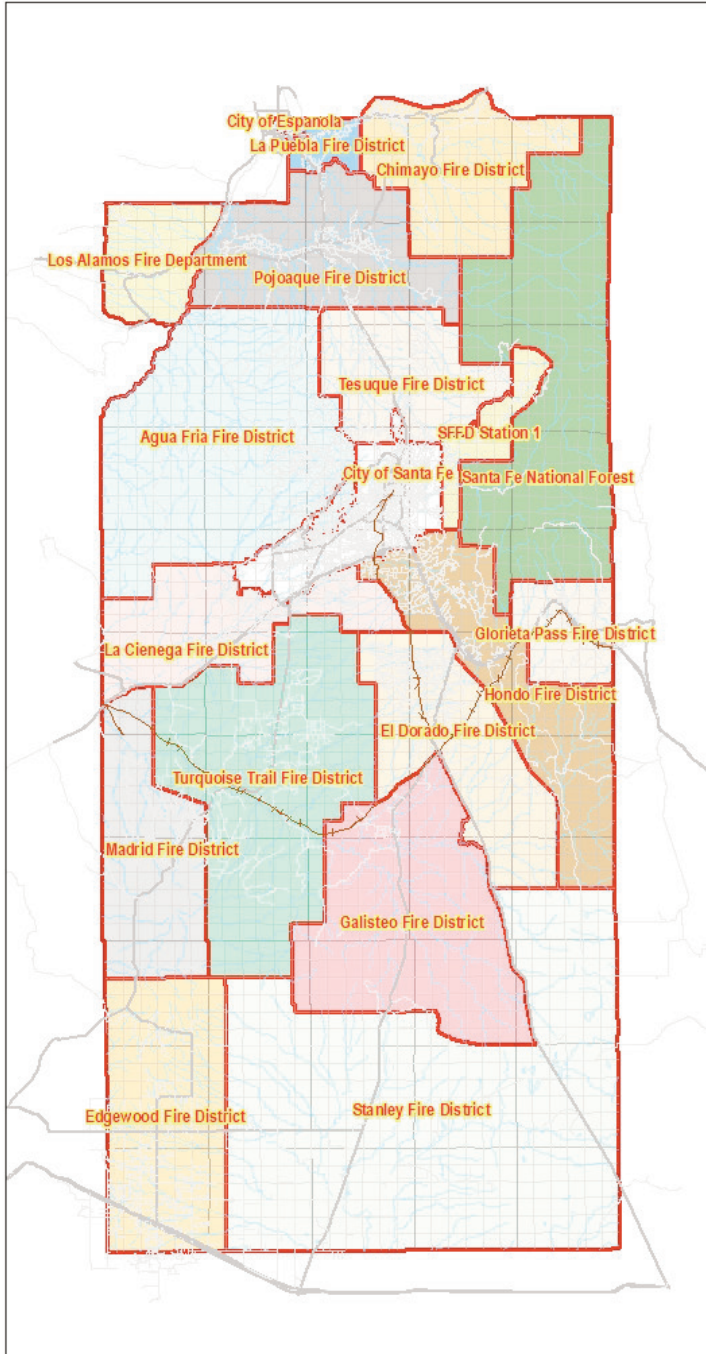
A. On October 10, 2023, at a regular meeting of the Santa Fe County Board of County Commissioners, the Board of County Commissioners of Santa Fe County adopted Resolution 2023-105 and determined that no change to the land use assumptions, capital improvements plan or impact fees was necessary.

B. The impact fees shall continue to apply in the unincorporated boundaries of the County, as depicted on the map attached hereto and made a part hereof by reference.

C. If, within sixty days after publication of this Notice, a person makes a written request to the Board of County Commissioners of Santa Fe County c/o Jacob Black, Fire Chief at P.O. Box 276, Santa Fe, New Mexico, 87504-0276, requesting that the land use assumptions, capital improvements plan or impact fees be updated, the Board of County Commissioners may accept or reject such request by following the requirements of NMSA 1978, §§ 20 through 35 (the Development Fees Act).

EXHIBIT A

Santa Fe County Fire Districts



Legend

- Major Roads
- Minor Roads
- Railroad Lines
- Streams and Arroyos
- Incorporated Areas



1:450,000

1 inch represents 40,000 feet



This information is for reference only. Santa Fe County assumes no liability for errors associated with the use of these data. Users are solely responsible for confirming data accuracy.



SANTA FE COUNTY

December 22, 2023

