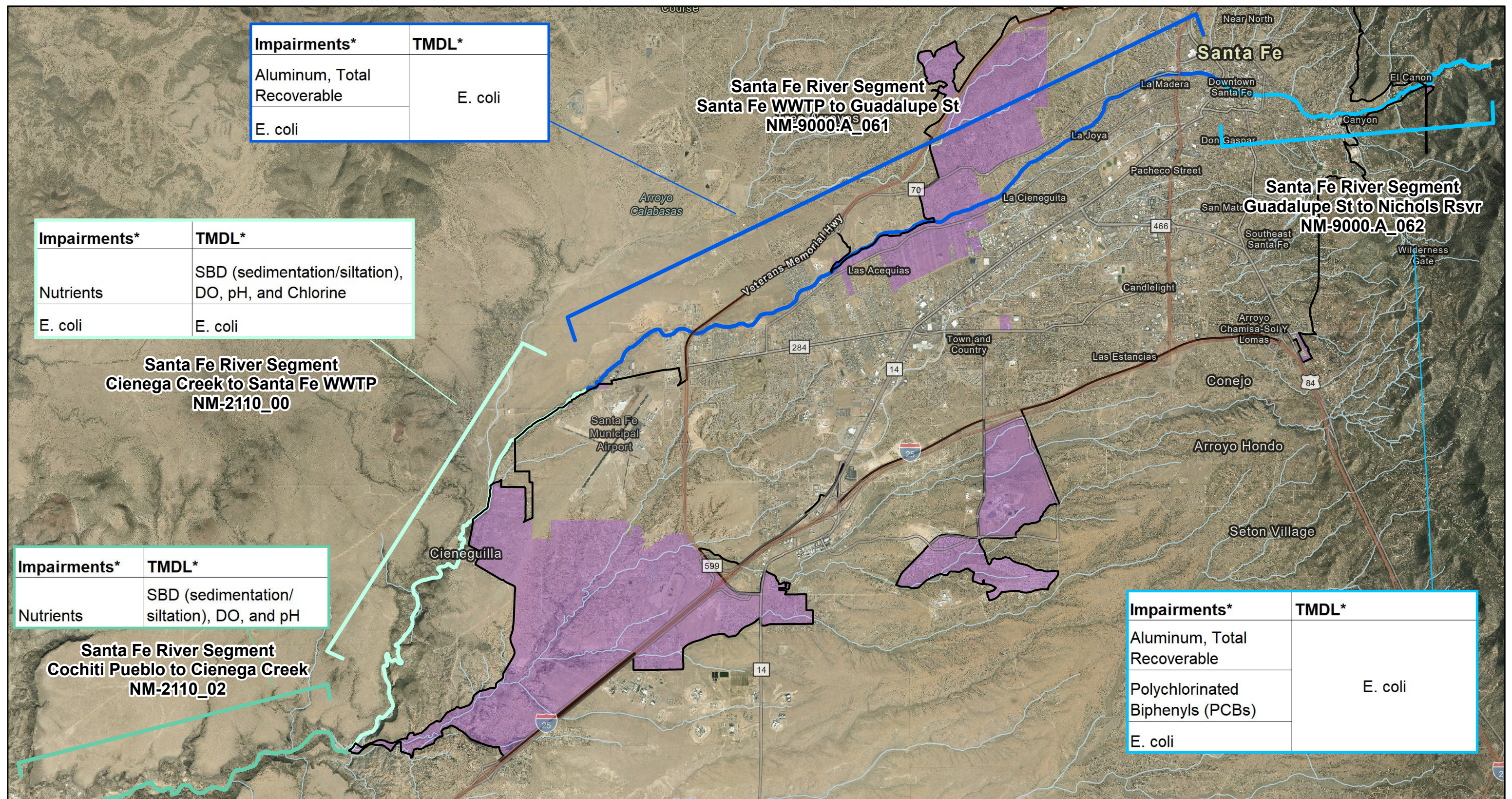


Impairments*	TMDL*
Aluminum, Total Recoverable	E. coli
E. coli	

Impairments*	TMDL*
Nutrients	SBD (sedimentation/siltation), DO, pH, and Chlorine
E. coli	E. coli

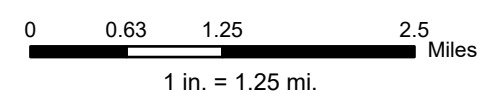
Impairments*	TMDL*
Nutrients	SBD (sedimentation/siltation), DO, and pH

Impairments*	TMDL*
Aluminum, Total Recoverable	E. coli
Polychlorinated Biphenyls (PCBs)	
E. coli	



Bohannon | Huston
www.bhinc.com 800.877.5332

Santa Fe County MS4 Jurisdiction
 2021 Census Urbanized Area
 Flowline



Santa Fe River Impairments & TMDL Information

* Final 2024-2026 State of NM Clean Water Act Section 303(d)/Section 305(b) Integrated Report