

Pojoaque Basin Regional Water System



December 18, 2024



Presentation provided by Dave Angeloz, Stampede Ventures, Inc.



TABLE OF CONTENTS

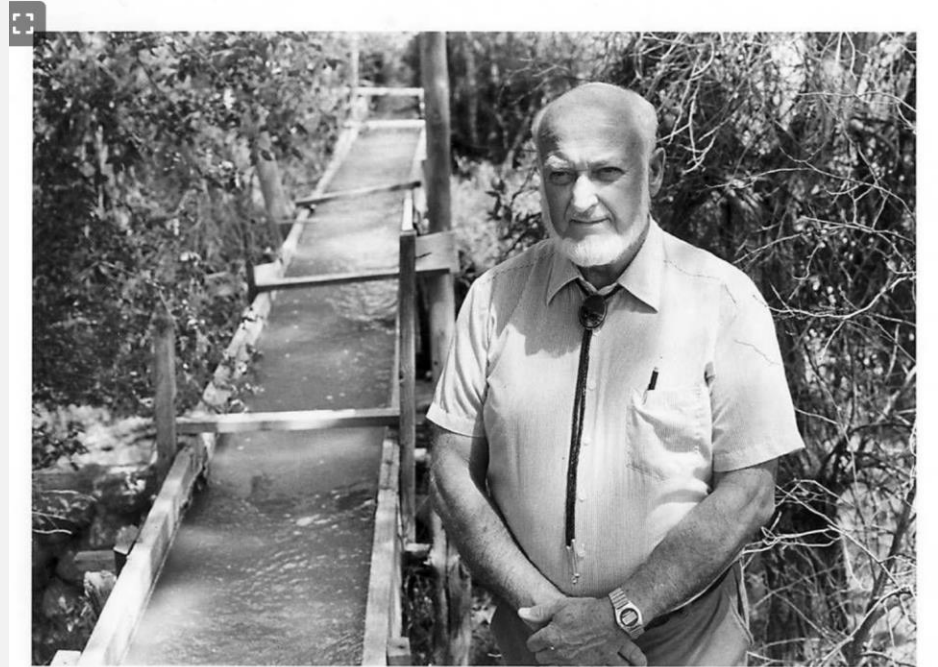
POJOAQUE BASIN REGIONAL WATER SYSTEM

- PBRWS Background
- Aamodt Settlement
- Key Accomplishments
- Project Overview
- Phase One Construction
 - Intake & Well Caissons
 - Mechanical / Electrical Building
 - Water Treatment Plant
 - Tank Construction
 - Pipeline Construction - NM State Rd 502
- Construction Disturbance
- EPA Safe Drinking Standards
- Benefits of Advanced Water Treatment
- Schedule - Timeline
- Budget & Expenditures
- Santa Fe County Presentation

BACKGROUND

In 1966, the Aamodt lawsuit was filed by the New Mexico State Engineer's Office over water rights on the Pojoaque, Nambé and Tesuque rivers

- R. Lee Aamodt was a resident of Jacona, with irrigated land.
- The lawsuit was filed to determine all water rights in the Pojoaque River Basin.
- Over 3000 parties were involved in the case.
- The U.S. waived sovereign immunity for the Pueblos to determine Pueblos' water rights.
- In 2000, the Court orders settlement discussions between the parties.
- In 2006, the Pueblos of San Ildefonso, Pojoaque, Nambé and Tesuque signed onto the Aamodt Settlement.
- The settlement also included non-Indian parties such as the local acequia and non-acequia landholders, Santa Fe County, and State of New Mexico.



R. Lee AAMODT - by "aamodt"

Lee Aamodt in 1983. The Aamodt water rights litigation grew out of concerns the basin lacked the water to fulfill everyone's needs and rights, especially during droughts.

artesy photo

AAMODT SETTLEMENT ACT

- In 2010, Congress passes the *Aamodt Litigation Settlement Act, Public Law 111-291*
 - Pueblos agree to limit priority calls against non-Pueblo users to existing uses.
 - A regional water system will be constructed to deliver safe drinking water to users in the Pojoaque basin.
 - It is optional for existing non-Indian users to connect to the water system pipeline.
 - All new non-Indian water users will be required to connect to the system.
- In 2013, the *Aamodt Settlement Agreement* is agreed upon by all parties and authorized the Secretary of Interior to execute, a revised settlement agreement consistent with the Act (“Amended Settlement Agreement”), with the State of New Mexico and the other settlement parties.

AAMODT PARTIES

- **The Primary Aamodt Parties:**
 - **United States**
 - **Pueblo of San Ildefonso**
 - **Pueblo of Nambe**
 - **Pueblo of Pojoaque**
 - **Pueblo of Tesuque**
 - **State of New Mexico /State Engineer**
 - **Santa Fe County**

AAMODT SETTLEMENT

Key provisions of the Aamodt settlement:

- A regional water system will be constructed to deliver safe drinking water to users in the Pojoaque basin and the rest of Santa Fe County (on an interim basis)”.
 - Optional for existing non-Indian users to connect to the water system.
 - All new non-Indian water users will be required to connect to the system.
 - Closing the basin to new water right development unless existing water rights are used for a new development.
 - Metering all water uses in the basin.

AAMODT SETTLEMENT

- The Regional Water System will have capacity to deliver water from the Rio Grande to the four Pueblos and to non-Indian residents in the Pojoaque Basin.
- Water will be diverted from the Rio Grande on Pueblo of San Ildefonso land, above Otowi gage.
- The RWS will provide up to 2,500 acre-feet per year for consumptive use with the ability to expand in the future.
- The Bureau of Reclamation will build the system.

The Regional Water System will consist of:

- A water treatment plant to treat water to meet Safe Drinking Water Act standards.
- 22 water storage tanks.
- 4-mile-long raw water pipeline from the Rio Grande to the WTP.
- A potable water transmission and distribution system consisting of approximately 151 miles of pipelines.
- 6 pump stations.
- Approximately 7 miles of new power lines
- An irrigation improvement project on the Rio Pojoaque.

KEY ACCOMPLISHMENTS

1966

- Aamodt Lawsuit Filed

2010

- Congress passes the Aamodt Settlement Act, PL 111-291, Title VI

2012

- Aamodt Settlement Agreement executed

2013

- Cost Sharing and System Integration Agreement

2013

- Show cause order for objections to Amended Settlement Agreement

2016

- Partial Final Decree to approve Amended Settlement Agreement

2016

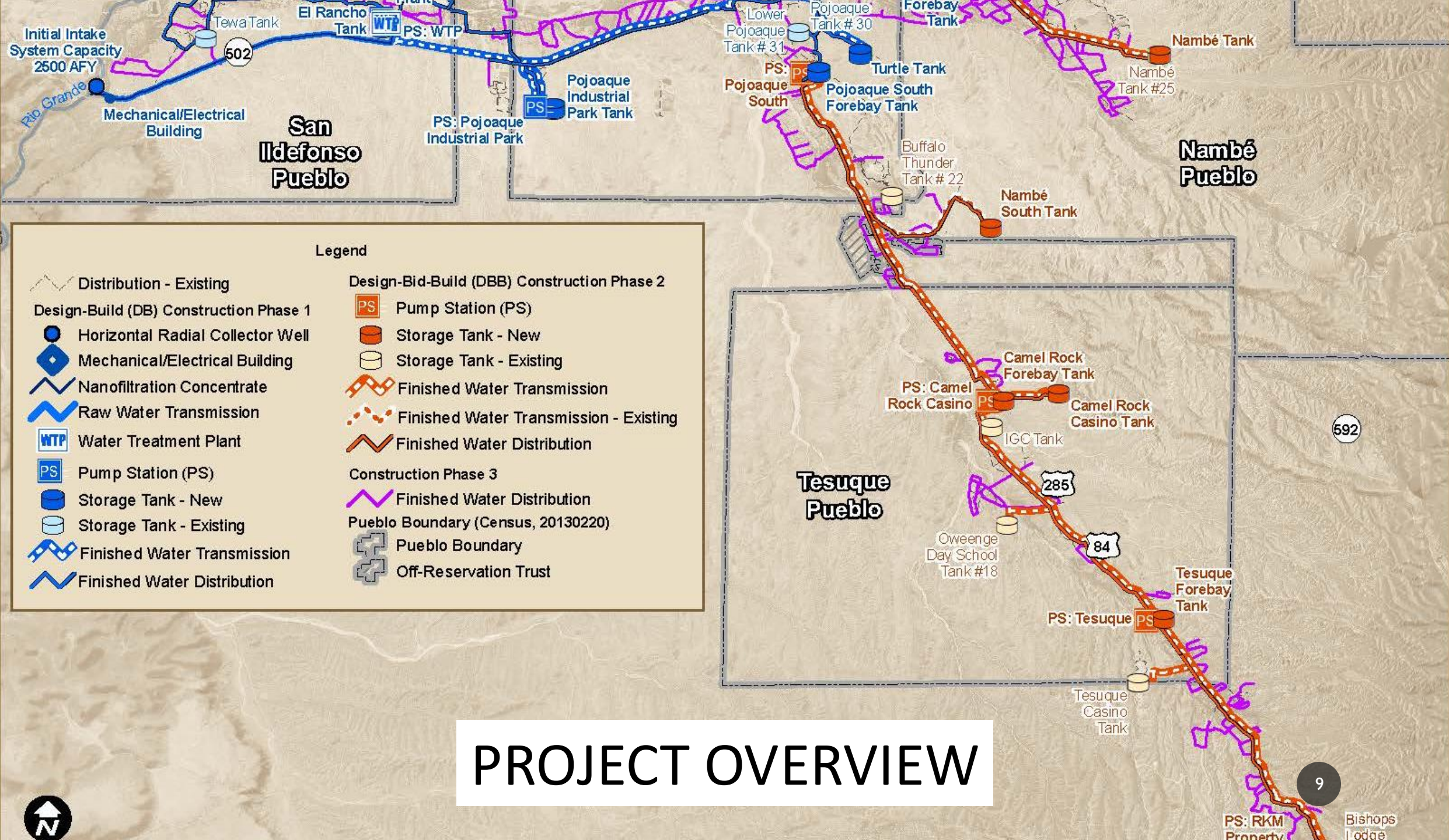
- Joint Powers Agreement, Santa Fe County Resolution 2016-146

2017

- Final Decree

2019

- 611 (G) -Consensus Design approved -Construction to begin September 17, 2019



Legend

| | |
|--|---|
| Distribution - Existing | Design-Bid-Build (DBB) Construction Phase 2 |
| Design-Build (DB) Construction Phase 1 | Pump Station (PS) |
| Horizontal Radial Collector Well | Storage Tank - New |
| Mechanical/Electrical Building | Storage Tank - Existing |
| Nanofiltration Concentrate | Finished Water Transmission |
| Raw Water Transmission | Finished Water Transmission - Existing |
| Water Treatment Plant | Finished Water Distribution |
| Pump Station (PS) | Construction Phase 3 |
| Storage Tank - New | Finished Water Distribution |
| Storage Tank - Existing | Pueblo Boundary (Census, 20130220) |
| Finished Water Transmission | Pueblo Boundary |
| Finished Water Distribution | Off-Reservation Trust |

PROJECT OVERVIEW



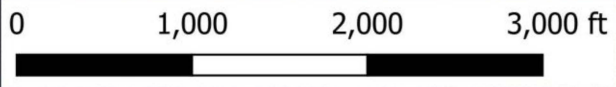
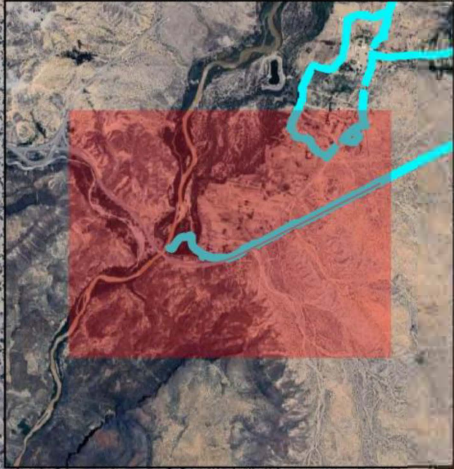
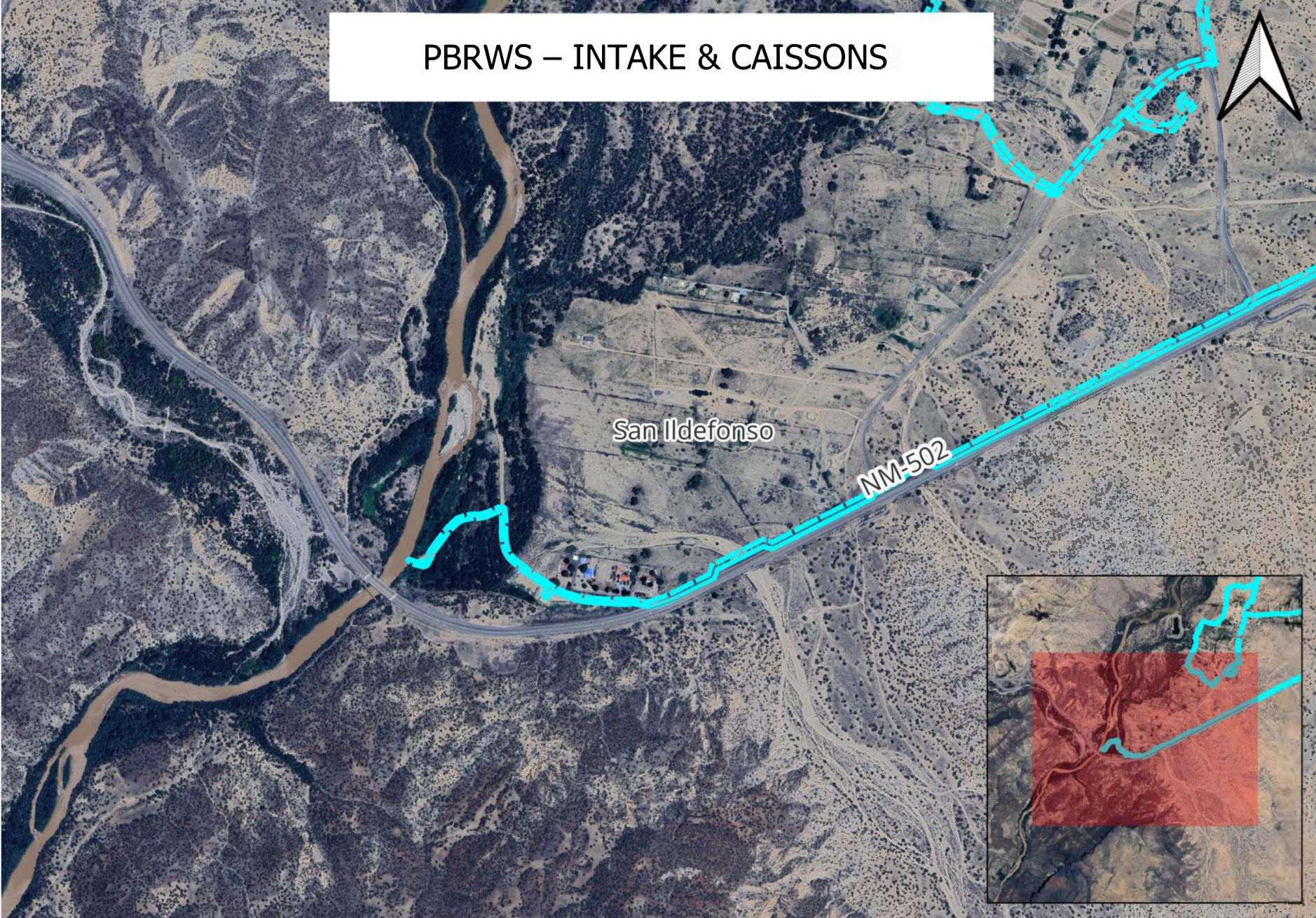
PBRWS PHASE ONE CONSTRUCTION

Activity:

- Collector Wells, Raw Water Transmission Pipelines, Mechanical & Engineering (M/E) Building (Complete)
- Construction of Caissons for Collector Well (Complete)
- Pipe from Collector Wells to Mechanical/Electrical Building (Complete)
- Water Treatment Plant (In Progress)
- Pipeline from Intake to Treatment Plant (In progress)
- Tanks (In progress)



PBRWS – INTAKE & CAISSONS





PBRWS - INTAKE & CAISSONS

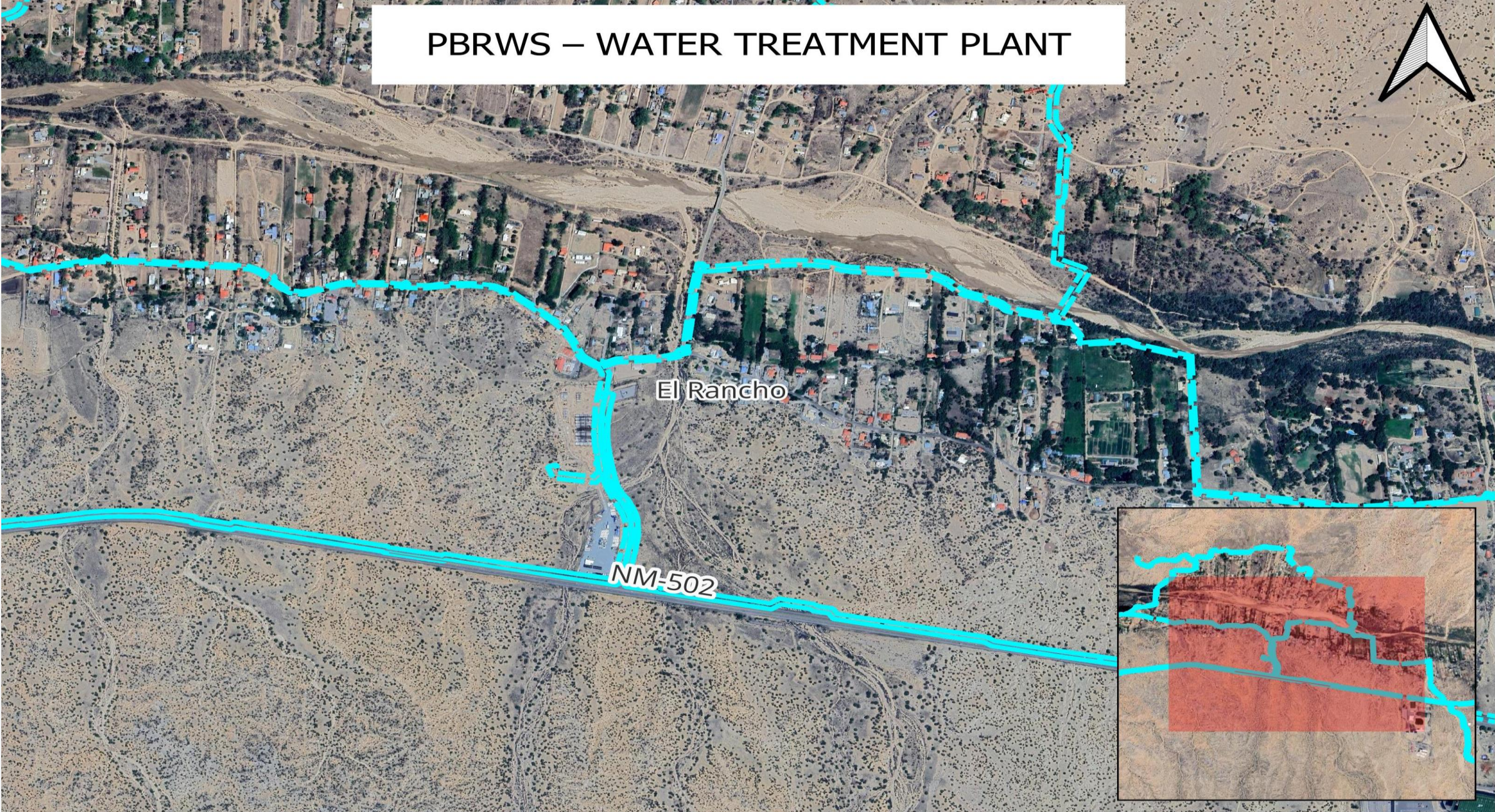
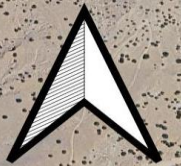


MECHANICAL/ELECTRICAL BUILDING



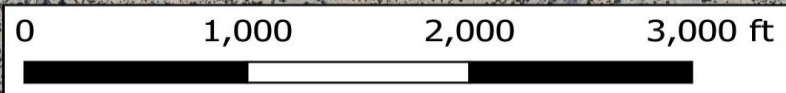
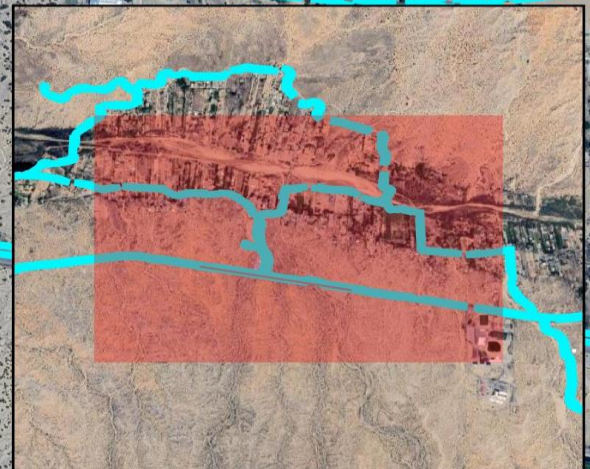
MECHANICAL/ELECTRICAL BUILDING

PBRWS – WATER TREATMENT PLANT




El Rancho

NM-502



PBRWS Pipeline



Construction Corridor Boundary

PBRWS -- WATER TREATMENT PLANT

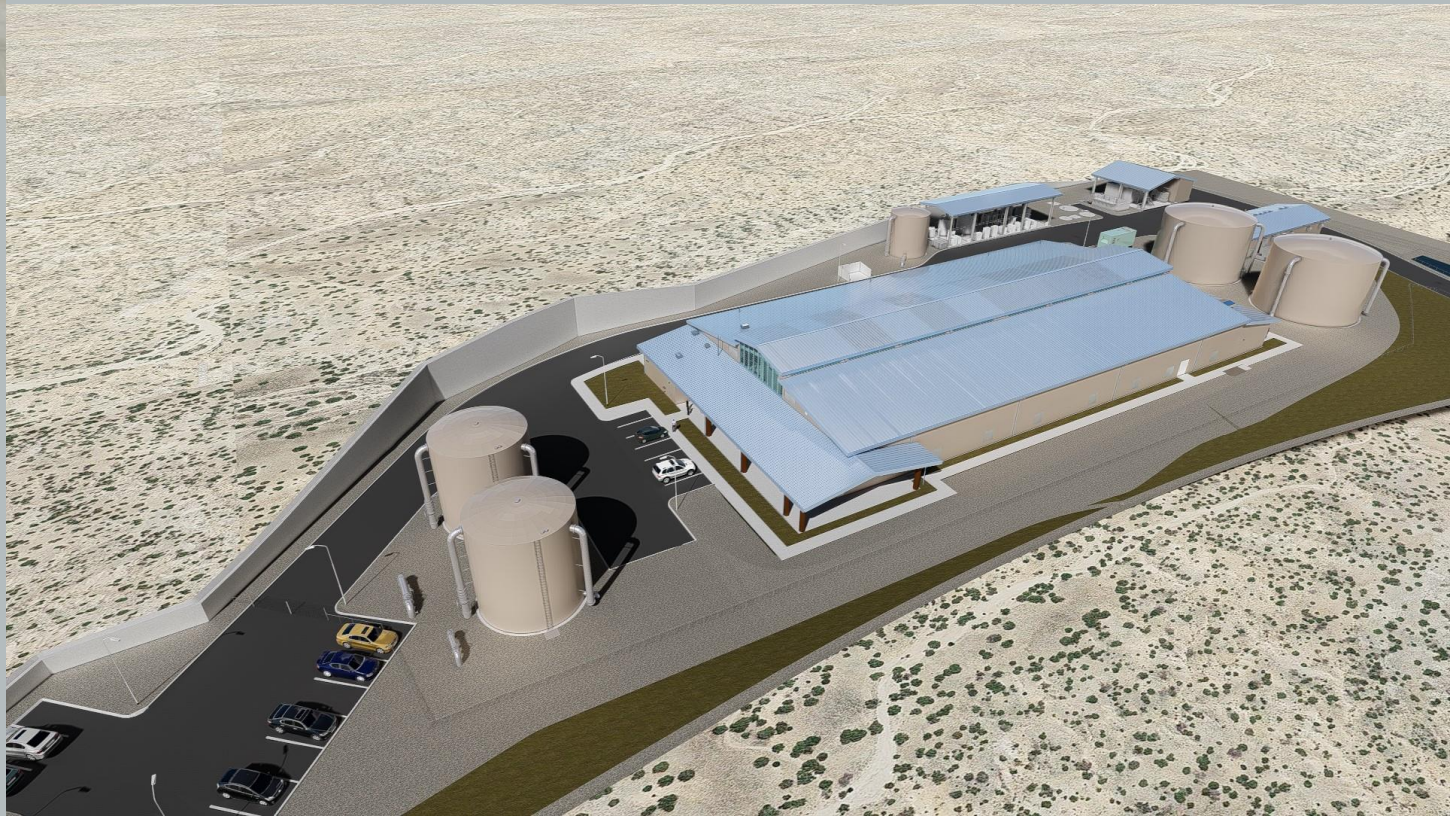
- **WTP Yard Piping, Site Electrical Installations, WTP Tanks and Building Erection:**
 - **All Underground Yard Piping at WTP (Being installed)**
 - **Electrical Duct Banks at WTP (Being installed)**
 - **Building Electrical Gear (Being installed)**
 - **All Structural Concrete at WTP (In progress)**
 - **All Buildings at WTP (In progress)**



PBRWS - WATER TREATMENT PLANT
EL RANCHO, NM



PBRWS - WATER TREATMENT PLANT
EL RANCHO, NM



PBRWS – TANKS



Pojoaque Pueblo

Industrial Park





PBRWS - TANK CONSTRUCTION
POJOAQUE PUEBLO

PBRWS - Smithco Pipeline
Construction Corridor



PBRWS - PIPELINE CONSTRUCTION
NM STATE ROAD 502



AAMODT SETTLEMENT CONSTRUCTION DISTURBANCE

Construction Disturbance During Construction:

What to Expect

Lane closures and increased construction traffic for the next several months.

Traffic may be limited to one (1) lane during all construction activities.

Safety Measures in Place

Reclamation and CDM-Smith have prioritized addressing all safety and traffic concerns.

Efforts are being made to minimize disruptions and ensure public safety.

POJOAQUE BASIN GROUNDWATER
HIGH RISK FOR CONTAMINATION ABOVE EPA SAFE DRINKING WATER
STANDARDS:

Some contaminants found in groundwater

- Uranium (from natural erosion)
- Arsenic (from natural erosion)
- Copper (from pipes)
- Lead (from pipes)
- Nitrates (from septic systems)
- E. coli, Giardia (from septic systems)



BENEFITS OF ADVANCED WATER TREATMENT

Microfiltration:

- Removes suspended solids and bacteria.

Nanofiltration:

- Targets dissolved contaminants like arsenic, uranium, and nitrates.

Advanced Filtration Systems:

- Will ensure water meets EPA Safe Drinking Water Standards

PBRWS SCHEDULE – TIMELINE OVERVIEW

| Pojoaque Basin Regional Water System | |
|---|--|
| Construction | |
| Phase 1 | Status: In construction Construction completion: Fall 2027 |
| Phase 2 Stage 1 | Status: Design Complete Construction Expected to start: Spring 2025 Estimated completion: Fall 2026 |
| Phase 2 Stage 2 | Status: Design Construction Expected to start: Spring 2026 Estimated completion: Fall 2028 |

**Pojoaque Basin Regional Water System
Project Funding**

| | 611(g) (2018) | Indexed 611(g) Current |
|----------------|----------------------|-------------------------------|
| Federal | \$276.8 | \$404.9 |
| State | \$100.00 | \$100.00 |
| County | \$14.4 | \$17.4 |
| Total | \$391.2 | \$522.3 |

- Federal and County funding is subject to indexing to account for inflation.

**Pojoaque Basin Regional Water System
Project Cost Estimate**

| Milestone | Feasibility Study | 611(g) | Current Estimate |
|---------------------------|--------------------------|---------------|-------------------------|
| Year | 2015 | 2018 | 2023 |
| Total Project Cost | \$320M | \$406.3M | \$766.5M* |

*** Based on different levels of design and indexing**

- Reclamation has convened a team to address indexing shortfalls
 - Developing criteria for improving indexing accuracy on existing project

ADDITIONAL INFORMATION


Pojoaque Basin Regional Water System

Bureau of Reclamation

<https://www.usbr.gov/uc/progact/PojoaqueBasinRegionalWaterSystem/index.html>

Santa Fe County

<https://www.santafecountynm.gov/public-works/aamodt>



**POJOAQUE
BASIN
REGIONAL
WATER
SYSTEM**

Points of Contact:

Bureau of Reclamation

Jennifer Walters Adolph, P.E. – Pojoaque
Engineering Division Manager

jwaltersadolph@usbr.gov

Santa Fe County

Scott Kaseman – Project Manager

skaseman@santafecountynm.gov

SANTA FE COUNTY



SANTA FE COUNTY TEAM:

- * COMMISSIONER JUSTIN GREENE, DISTRICT 1
- * GREG SHAFFER, COUNTY MANAGER
- * BRIAN SNYDER, PUBLIC WORKS DIRECTOR
- * SCOTT KASEMAN, PROJECT MANAGER III
- * MICHELE CASKEY, REAL PROPERTY SUPERVISOR
- * JOHN UTTON, SFC'S OUTSIDE COUNSEL FOR AAMODT

SANTA FE COUNTY



1. PBRWS BENEFITS TO SANTA FE COUNTY
2. INTERCONNECT BETWEEN PBRWS AND REST OF COUNTY UTILITY
3. DISTRIBUTION LINES TO SERVICE COUNTY CUSTOMERS IN POJOAQUE BASIN
4. PBRWS REAL PROPERTY ACQUISITION PROCESS
5. FUTURE OUTREACH
6. SUMMARY

PBRWS BENEFITS TO SANTA FE COUNTY



- Surface Water Imported Into Pojoaque Basin and County
 - So-Called Top of the World Water Rights = 1,752 AFY
 - San Juan Chama Project Water = 1,079 AFY
 - Nambe Reserved Right = 302 AFY
- Potable Drinking Water that Meets All Applicable Standards for Water Quality
- Fire Hydrants
 - Fire hydrants to be installed along with transmission and distribution lines
 - Greatly increases fire fighting capabilities in Pojoaque Basin
- Benefits to Those Who Choose Not to Connect Immediately When Service is Available
 - Fire hydrants along installed lines
 - PBRWS provides alternative in the event wells run dry
 - Property value improvement from having service line in road
- Massive Leveraging of Federal and State Funds

INTERCONNECT BETWEEN PBRWS AND REST OF COUNTY UTILITY



- Backup Supply to PBRWS
 - Future enhancements will allow rest of County system to provide backup supply to PBRWS
 - This will address critical need of PBRWS
- Water Quality
 - Disinfection byproducts (DBPs) can form if water sits in water system for extended period of time
 - Interconnect ensures water quality without waste by allowing water to be timely used
- PBRWS Operational, Maintenance, Repair, and Replacement (OMRR) Costs
 - Initial customer base in Pojoaque Basin inadequate to support PBRWS's OMRR at reasonable rates
 - Interconnect allows County water to be used elsewhere in County until needed in Pojoaque Basin
 - Interconnect, thus, provides non-Basin customers to help shoulder PBRWS's OMRR

DISTRIBUTION LINES TO SERVE COUNTY CUSTOMERS IN POJOAQUE BASIN



- All Distribution Lines Will be Designed
- County Will Decide Which Distribution Lines to Construct and When
- County Considerations in Deciding Which Distribution Lines to Construct – Polestar is Guaranteed Customers to be Served
 - Economic feasibility of distribution line
 - Water quality associated with distribution line
 - Minimizing construction costs
- Domestic Well Water Right Owners Choose to Connect When Service is Available Via “Well Election”
 - Filed with Federal District Court
 - Three (3) options
 - County decisions based upon number and location of domestic well water right owners choosing Option No. 1
 - Option No. 1 has two sub-options: a) connect all uses; or b) connect indoor uses and retain well for outdoor irrigation
 - If you made a well election other than option No. 1 you can still choose to connect and take advantage of the connection fund
 - More information -- <https://www.santafecountynm.gov/public-works/aamodt>



From Collaboration to Completion

SELECTROW

SelectROW will be coordinating the needed permanent utility easements on this project in cooperation with Santa Fe County and The Bureau of Reclamation.



SANTA FE COUNTY



Title Research

SelectROW's team performs the necessary research to compile a title report and identify the current owner of record and existing encumbrances.



Survey Permission Letters

SelectROW and or Precision Survey will send the landowner a survey permission letter and right of entry agreement to allow for survey access and to identify the easement area.



Easement Surveys

The Bureau of Reclamation will review and approve the surveyor's findings, and a final signed and stamped survey will be issued.



Valuation

The SelectROW will work with an appraiser and Santa Fe County to finalize the easement valuation.



Easement Acquisition

The Initial Offer Letter from SelectROW will explain how each property is impacted by the project. It will include surveyed exhibits, a legal description, information on valuation, and the easement agreement document that needs to be signed. There may also be encroachment documentation if an encroachment has been identified.



30-90 Days of Outreach and Discussion

Property owners can expect to hear from SelectROW to make sure they understand the documents and to answer any questions.



Unresolved Questions or Disputes

Within the 30 to 90 day outreach and discussion period, SelectROW, at Santa Fe County's discretion, will send a second letter called a Notice of Intent (NOI).



Payment

SelectROW will ensure prompt payment after full execution of the easement and completion of a W-9.



We want to hear from you, please feel free to contact us with your questions or comments:

PROJECT MANAGER

Jennifer Thompson
(505.401.8575)

Jennifer.Thompson@SelectROW.com

SR ROW AGENT

Deanna Miglio SR/WA
505.206.8573

Deanna.Miglio@SelectROW.com

ROW AGENT

Sherrie Darling
720.297.2963

Sherrie.Darling@SelectROW.com

FUTURE OUTREACH



- Sign-Up for District I Newsletters to Receive Quarterly PBRWS Updates
 - <https://www.santafecountynm.gov/county-commissioners/justin-greene>
 - Quarterly PBRWS Updates will be distributed to this group
- 2025 Community Meetings
 - Time and Place TBD
 - Focus will be on future phases
 - Let us know what topics you'd like to hear more about

SUMMARY



- **Make Well Election**

- Choosing to connect to County Water Utility immediately when service is available:
Increases chance that distribution lines will be built to serve you.
Allows for your connection costs to be covered via Connection Fund.
Ensures fire protection and water supply is nearby.

- **Real Property Acquisitions**

- Engage with SelectROW
- Ask questions
- Return signed documents quickly

- **Stay Informed**

- Sign-Up for County Commissioner, District I Newsletters
- Visit BOR and County Websites
- Lookout for Calendar Year 2025 Public Meetings