

QUARTERLY REPORT
Pojoaque Basin Regional Water System
September 30, 2025

The Pojoaque Basin Regional Water System (PBRWS) is the product of the AAMODT Settlement Agreement, which was reached between the United States of America, the State of New Mexico, Santa Fe County, the City of Santa Fe and the Pueblos of San Ildefonso, Nambe, Pojoaque, and Tesuque.

The System is currently being designed and constructed by the U.S. Department of the Interior's Bureau of Reclamation and will have the capacity to deliver water from the Rio Grande to the four Pueblos and non-Pueblo customers in the Pojoaque Basin and Santa Fe County.

- Water will be diverted from the Rio Grande on Pueblo of San Ildefonso land above Otowi gauge.
- The PBRWS will provide up to 2,500 acre feet of water per year for consumptive use with the ability to expand in the future.
- The Bureau of Reclamation will build the system. The Regional Water System will consist of:
 - A Water Treatment Plant to treat water to meet Safe Drinking Water Act standards
 - 22 water storage tanks and 6 pump stations
 - A 4-mile-long raw water pipeline from the Rio Grande to the WTP
 - Potable water transmission and distribution system consisting of 151 miles of pipelines
 - Approximately 7 miles of new power lines

Design & Construction Status

Phase 1 is 100% designed and construction is 51% complete based on BOR expenditures as of June 30, 2025. The Estimated Completion Date is August 2027.

Activity:

- Water Treatment Plant Main Building and Raw Water Transmission Pipelines
- Collector Wells, Mechanical & Engineering (M/E) Building (Complete)
- Construction of Caissons for Collector Well (Complete)
- Pipe from Collector Wells to Mechanical/Electrical Building; (Complete)
- Electric duct bank from CWs towards the Mechanical/Electrical Building; (Complete)
- Access roads from M/E building to CWs (Complete)

Phase 2 Stage 1 is 100% designed. BOR only received 1 bid to construct Stage 1 that was more than double the engineer's cost estimate. Stages 1 and 2 will be combined into 1 bid package to hopefully encourage multiple larger contractors to bid on the project and provide better pricing.

Phase 2 Stage 2 design plans are at 90%. The plans were reviewed by the County and Pueblos and comments provided to the engineers. Additional value engineering is being conducted to determine if the scope of work can be scaled back sufficiently to construct Phase 2 with the available budget and still meet the current demands of the intended service area.

Phase 3 is at 30% design requiring input from the County as to location of the distribution lines based on landowner participation in the system. Staff are analyzing Well Election data and Survey results from the Office of the State Engineer to help make these determinations.

Easement Acquisition Status

Phase 1 – Approximately 70 Easements required - ROW Acquisition Consultant under contract and acquiring easements.

Phase 2 Stage 1– On hold pending realignment feasibility during Phase 2 value engineering process.

Interconnect and Reverse Flow Between PBRWS and Rest of County Water Utility

A “T” junction has been designed into the Project near the Village of Tesuque to allow the PBRWS to connect with the Santa Fe Basin Water System. The County is procuring engineering services to prepare a Preliminary Engineering Report to determine the best connection point with the Santa Fe System, and the alignment to connect with the “T” junction.

Benefits of Interconnect Between PBRWS and Rest of County Water Utility:

- Addresses critical need of the System regarding Water Quality
 - o Disinfection byproducts (DBPs) can form if water sits in system for an extended period of time.
 - o Interconnect ensures water quality without waste by allowing water to be timely used.
- PBRWS Operational, Maintenance, Repair, and Replacement (OMRR) Costs
 - o *Initial* customer base in Pojoaque Basin is inadequate to support PBRWS’s OMRR Costs at reasonable rates.
 - o Interconnect allows up to 1,000 acre feet per year of County water to be used elsewhere in County until it is needed in the Pojoaque Basin.
 - o Interconnect provides non-Basin customers to help shoulder PBRWS’s OMRR Costs.
- Future reverse flow enhancements will allow the rest of the County system to provide backup supply to PBRWS

Santa Fe County PBRWS Anticipated Costs

Santa Fe County 611(g) Contribution

	Total
Corrected 611(g) Amount Including Upsize of Line and Infrastructure to the Interconnect with the Santa Fe Basin Water System - Indexed to 2024 2025 County Contributions to Date	\$24,400,000.00 <u>\$ 14,412,500.00</u>
Outstanding Balance Due - Subject to Indexing	\$9,987,500.00

Interconnect with Santa Fe Basin Water System

	Total
Engineering Design & Oversight Services for Interconnect & Reverse Flow Connection To the Santa Fe Basin Water System	\$800,000.00
Construct Interconnect with Santa Fe Basin Water System & Reverse Flow Infrastructure	TBD

Phase 3 Distribution Lines & Connections

	Total
Phase 3 Distribution Lines & Connections (Deferred: 2018 Dollars)	\$24,000,000.00

Project Ceiling and Indexing Status

Previously, the BOR Project Ceiling was \$522,000,000.00. In October 2024, the Project Ceiling was indexed to \$734 million using a project specific index. Assuming 3.5% escalation per year, by 2026 the Ceiling is estimated to be \$777.5 million.

BOR continues to work with the County and other partners on the details of the project specific indexing, Project Ceiling, non-contract costs that BOR believes to be in addition to the Project Ceiling, and plans to address such non-contract costs (which are estimated to be substantial).

Partners Agreements Status

Counsel and staff for the County and Pueblos are finalizing the Operations Agreement and are preparing a schedule of all documents and activities necessary to assume control of the System. The Stakeholders are currently working to finalize the commissioning and transition plan for turning over operations to the Regional Water Authority once the system is complete.

Communications and Coordination Status

The County, NMED and the Office of the State Engineer participated in the City of Espanola's Centennial Celebration on September 27th. Over 50 property owners had their well water tested while County and OSE staff discussed the project and assisted landowners with preparing the *Acceptance / Well Election Form* required to connect to the system once available.

County staff conduct biweekly meetings with BOR's Project Managers, host multiple monthly meetings with all Project partners and attend the weekly on-site construction meeting at the Water Treatment Plant.

Santa Fe County Point of Contact

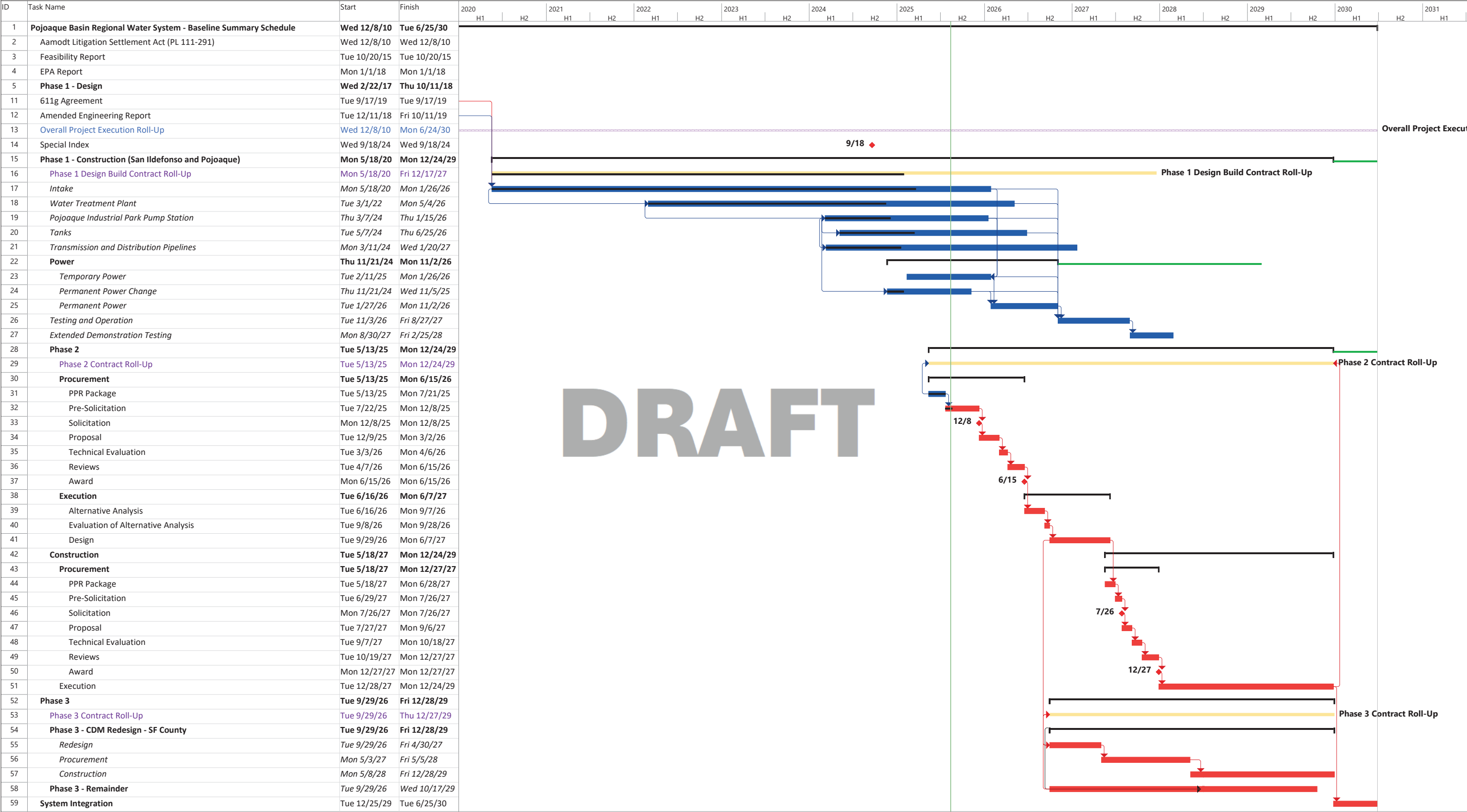
Scott Kaseman
Santa Fe County Project Manager
505-992-9887
skaseman@santafecountynm.gov

ATTACHMENTS:

Exhibit A – Bureau of Reclamation Quarterly Report
Exhibit B – Bureau of Reclamation Baseline Schedule



Pojoaque Basin Regional Water System
Design & Construction Baseline Schedule Summary



DRAFT

Project: PBRWS Master Baseline
Date: Wed 8/13/25

Task

Split

Milestone

Summary

Project Summary

Deadline

Critical

Critical Split

Progress

Manual Progress

Slack



United States Department of the Interior

BUREAU OF RECLAMATION

Albuquerque Area Office
555 Broadway NE, Suite 100
Albuquerque, NM 87102-2352



IN REPLY REFER TO:

ALB-100

2.2.4.21

VIA U.S. AND ELECTRONIC MAIL

Mr. Gregory Shaffer
Santa Fe Country Manager
102 Grant Avenue
Santa Fe, NM 87501
gshaffer@santafecountynm.gov

Subject: Pojoaque Basin Regional Water System (PBRWS) – Quarterly Report – Fiscal Year (FY) 2025
Third Quarter (Q3)

Dear Mr. Shaffer:

Thank you for your continued support to the PBRWS Project. The attached Aamodt expenditure report shows expenditures for the Q3 of FY 2025 for different categories which total \$18,323,717.22. Total Aamodt project expenditures through March 2025 were \$266,992,823.19. Approximately, \$182.3 million out of \$357.4 million has been invoiced by CDM Smith for Phase 1, through June 2025.

PBRWS Construction Status Update

Water Treatment Plant Site:

Installation of Raw Water Tank 1 & 2 steel tank shell with accessories started in February 2025 and scheduled to complete by September 2025. Clearwell 1 & 2 excavation and footings were completed in May 2025. Clearwell Tank 2 Concrete Ring Beam Concrete Ring Beam was casted in May 2025 while Clearwell Tank 1 scheduled to complete by June 2025. Process Building MF/UF and NF Equipment's installation has started as of March 2025. Fire Protection and Heating, Ventilation, and Air Conditioning (HVAC) works began in February and March 2025 respectively. Electrical installation with cable tray and conduits has started in March 2025. Finished Water Pump Station HVAC works has started in March 2025 and scheduled to complete by July 2025. Electrical equipment and cable tray installation has started in April 2025. Construction of Structural works continues with Pre-Engineered Metal Building (PEMB) final installation by end of July 2025. Installation of interior wall, exterior doors and windows are ongoing. Mechanical Equipment Pads scheduled to be completed by July 2025. Plumbing and finishes works has started in February 2025 and scheduled to complete by August 2025.

Transmission & Distribution Pipelines:

Open cut pipe installation at RWT01_RWA at STA=22+00 to 175+00 and NFC01_ at STA=10+00 to 111+80 has started in May 2025. Construction of Transmission pipeline (#33-20) between WTP to Turtle Circle Tank Transmission & Distribution HDD piping installation at STA 142+55 were completed in May 2025. Jack & bore at started in May 2025. Construction of San Ildefonso East & West Distribution piping (#33-30) open cut works has started in May 2025.

Sites/Tanks:

Pojoaque Industrial Park Pump Station foundation and concrete work completed April 2025. Turtle Tank shoring installation was completed, and wall erections completed by June 2025. Construction of Intake

Mechanical & Electrical Building at the Intake Area continues with PEMB final installation completed in March 2025.

Table 1. Aamodt project expenditures: FY25, Q3

FY25 Q3 Totals by Category	Labor	Denver TSC	Contracts	Operational Expenses*	Total
Project/Contract Management	\$482,523.54	\$42,132.00	\$1,203,982.46	\$276,722.71	\$2,005,360.71
Feasibility	\$0.00	\$0.00	\$0.00	\$0.00	\$0.00
Environmental Compliance	\$1,924.81	\$0.00	\$0.00	\$0.00	\$1,924.81
Lands/Realty	\$0.00	\$0.00	\$0.00	\$0.00	\$0.00
Design	\$148,410.13	\$72,414.24	\$0.00	(\$550.00)	\$220,274.37
Rio Tesuque	\$0.00	\$0.00	\$0.00	\$0.00	\$0.00
San Ildefonso	\$0.00	\$0.00	\$0.00	\$1,065.00	\$1,065.00
Construction	\$0.00	\$0.00	\$19,470,789.70	(\$3,375,697.37)	\$16,095,092.33
Total	\$632,858.48	\$114,546.24	\$20,674,772.16	(\$3,098,459.66)	\$18,323,717.22

*Operational expenses include meals and incidentals, personal owned vehicle reimbursement, rent and undelivered orders.

Should you have any questions, please contact Vanessa Valentin at (505) 462-3553 or by email vvalentin@usbr.gov. Individuals who are deaf, deafblind, hard of hearing, or have a speech disability may dial 711 (TTY, TDD, or TeleBraille) to access telecommunications relay services.

Sincerely,

Jennifer Faler, P.E.
Area Manager