



Santa Fe County PFAS Investigation Next Steps

Presented to

La Cienega Valley Association

May 21, 2026



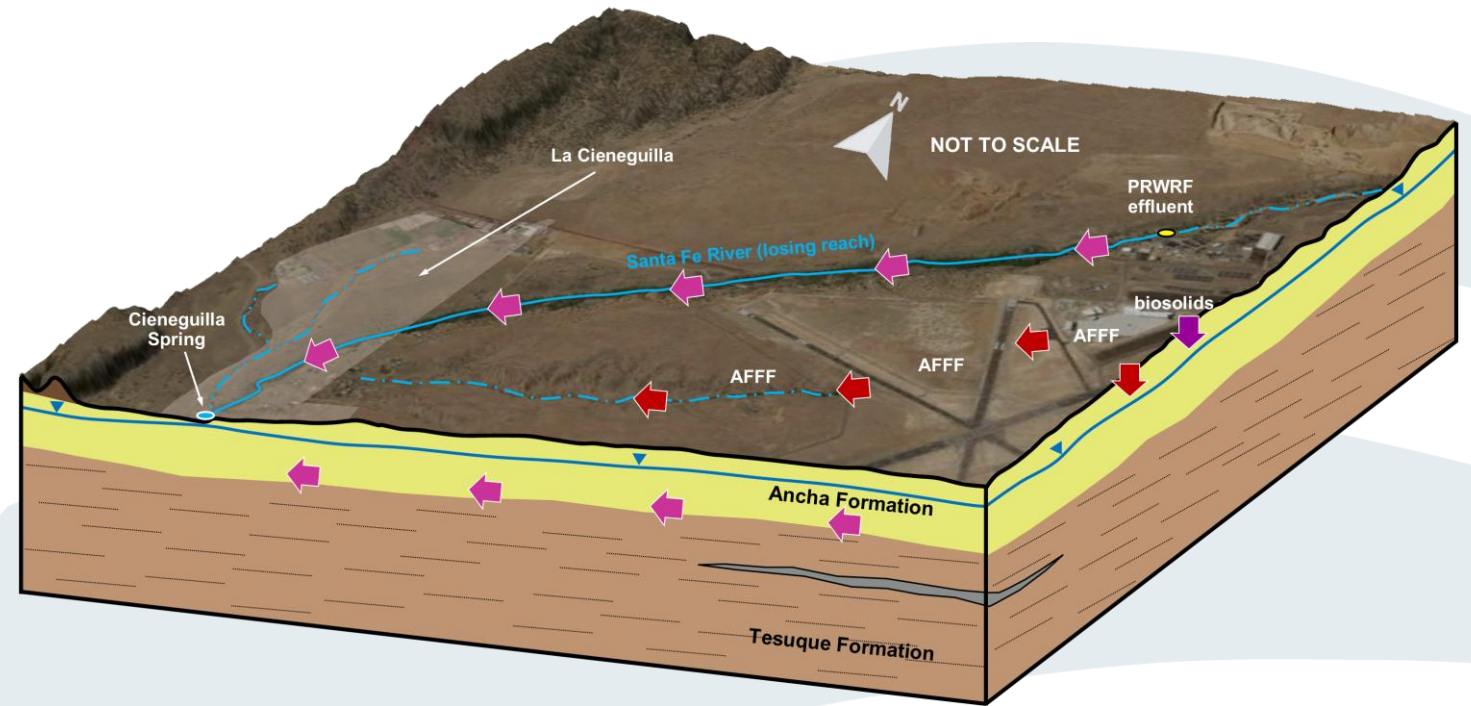
Project Understanding

Project Goal: Understand the magnitude and extent of PFAS impacts in La Cienega and La Cieneguilla and evaluate potential PFAS sources.

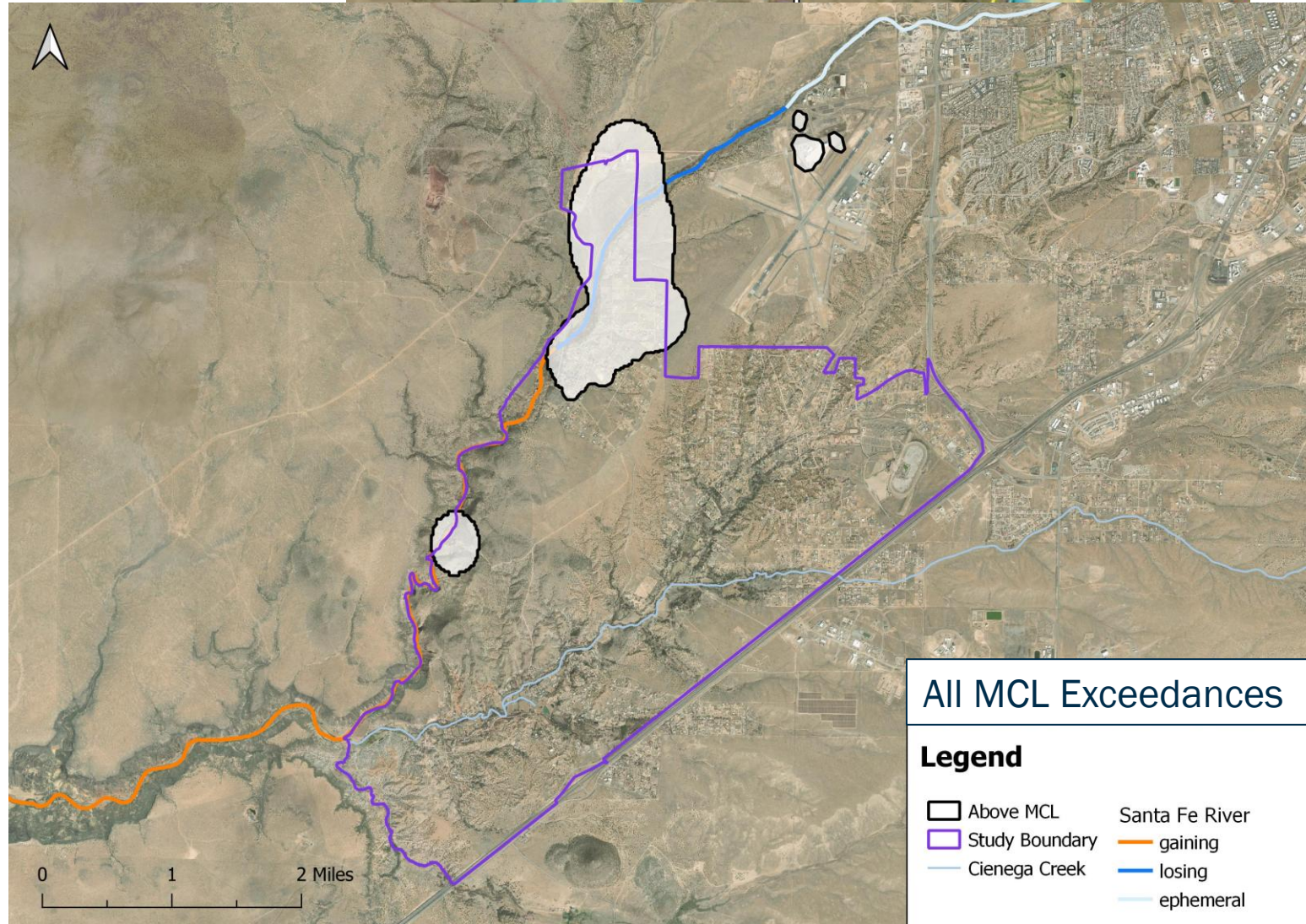
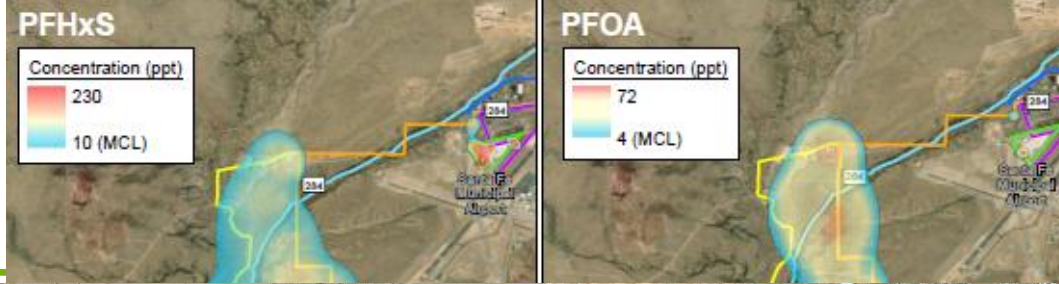
- Conceptual Site Model
- Current Understanding
- Next Steps
 - Monitoring Wells
 - Data Gap and Santa Fe River Sampling
 - Plume Characterization and Migration
 - Septic Study
- Timeline

Conceptual Site Model

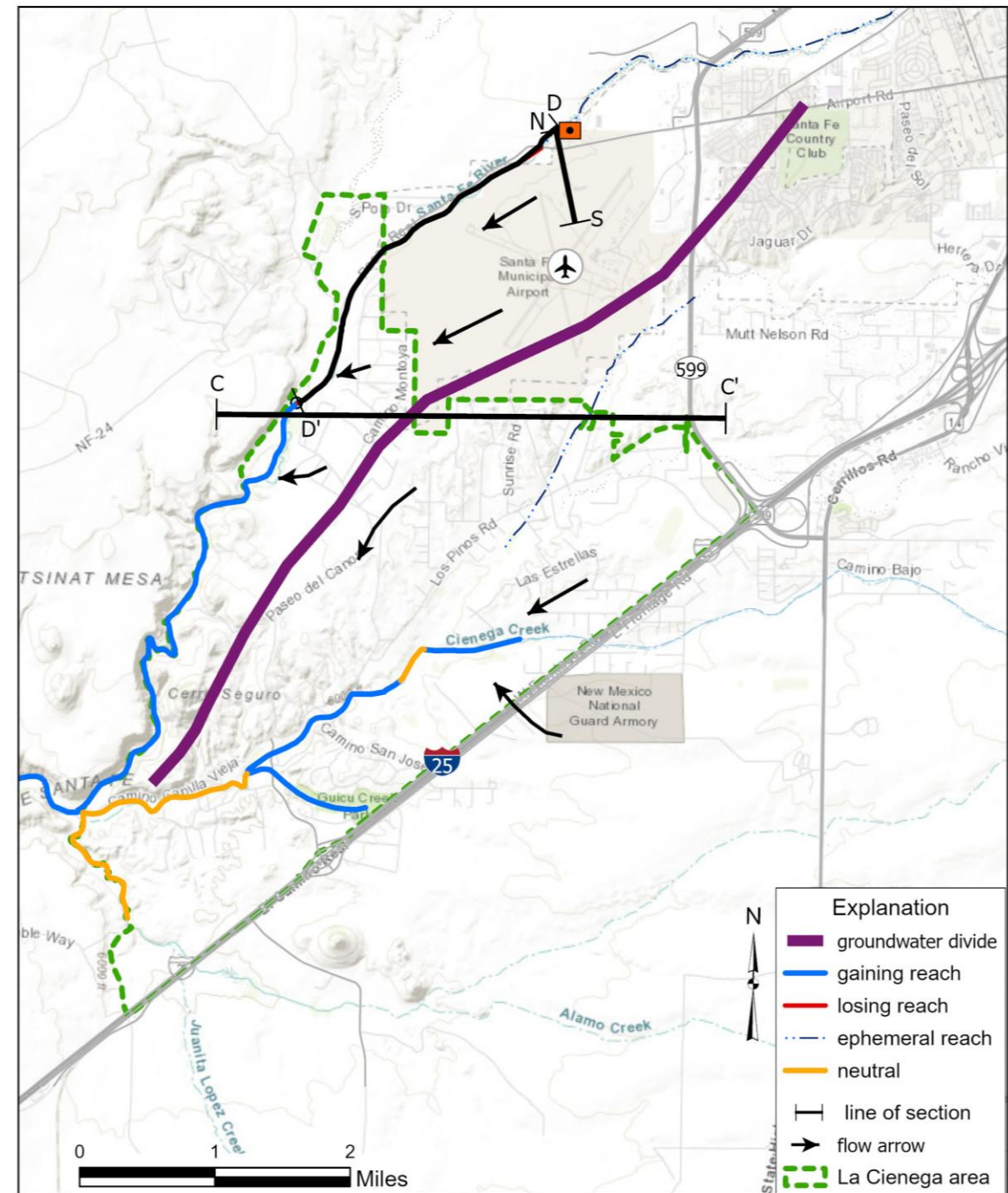
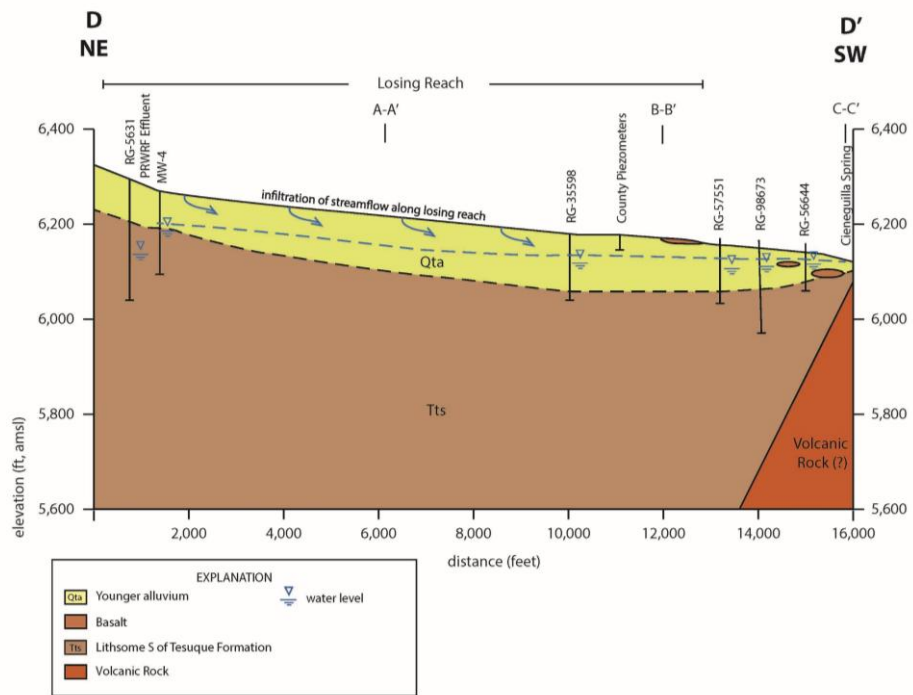
- Potential PFAS Sources (soil and groundwater):
 - Reported PFAS
 - Aqueous film-forming foam (AFFF) at Army National Guard's Aviation Support Facility (AASF) – flow from perched to regional aquifer
 - Leachate from biosolids and soils
 - Wastewater effluent along losing reaches of SF River
 - Possible unreported PFAS
 - Septic tanks
 - Santa Fe Regional Airport
 - Stormwater runoff
 - Other unknown sources



MCL Exceedances

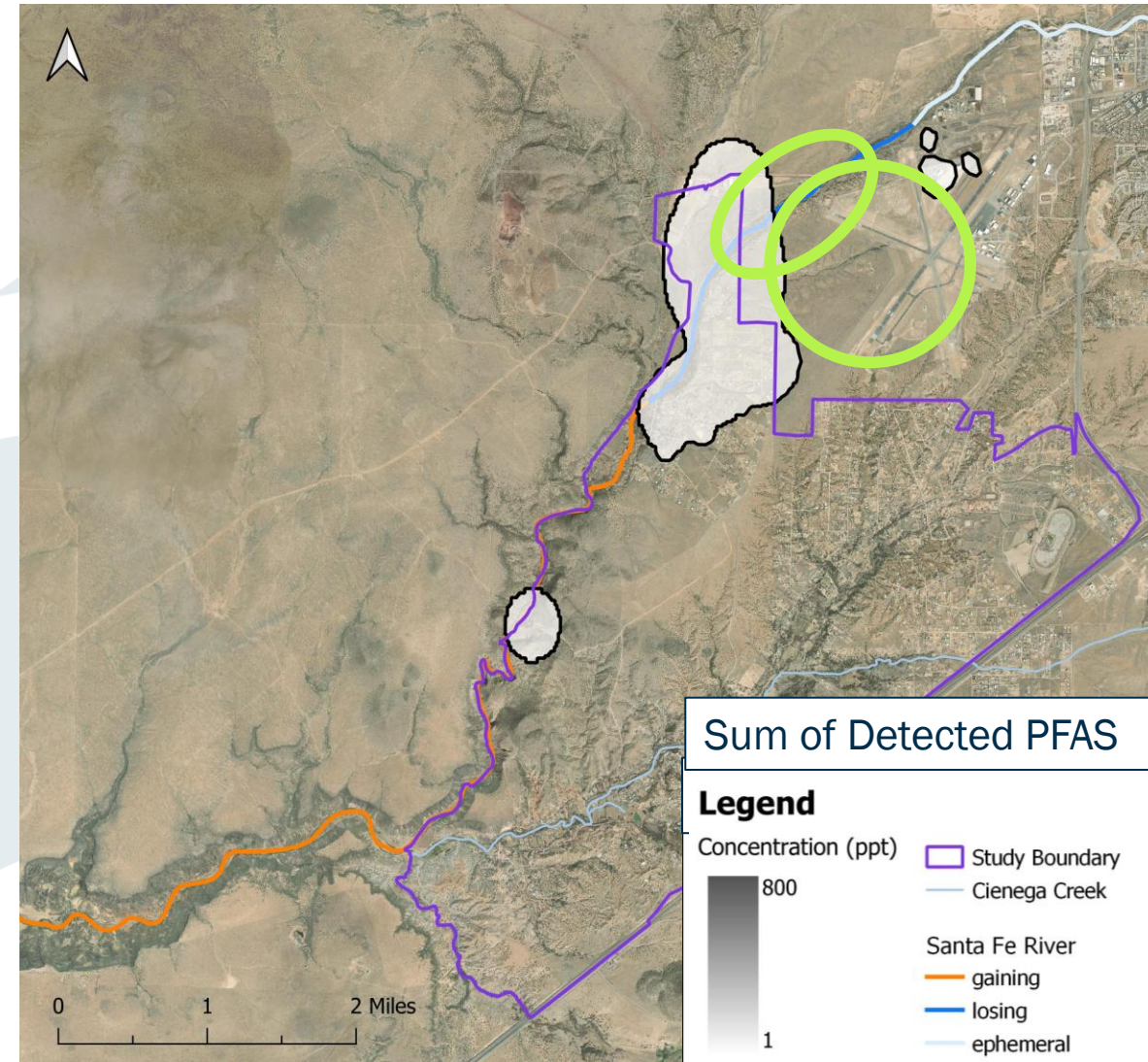


Hydrogeology

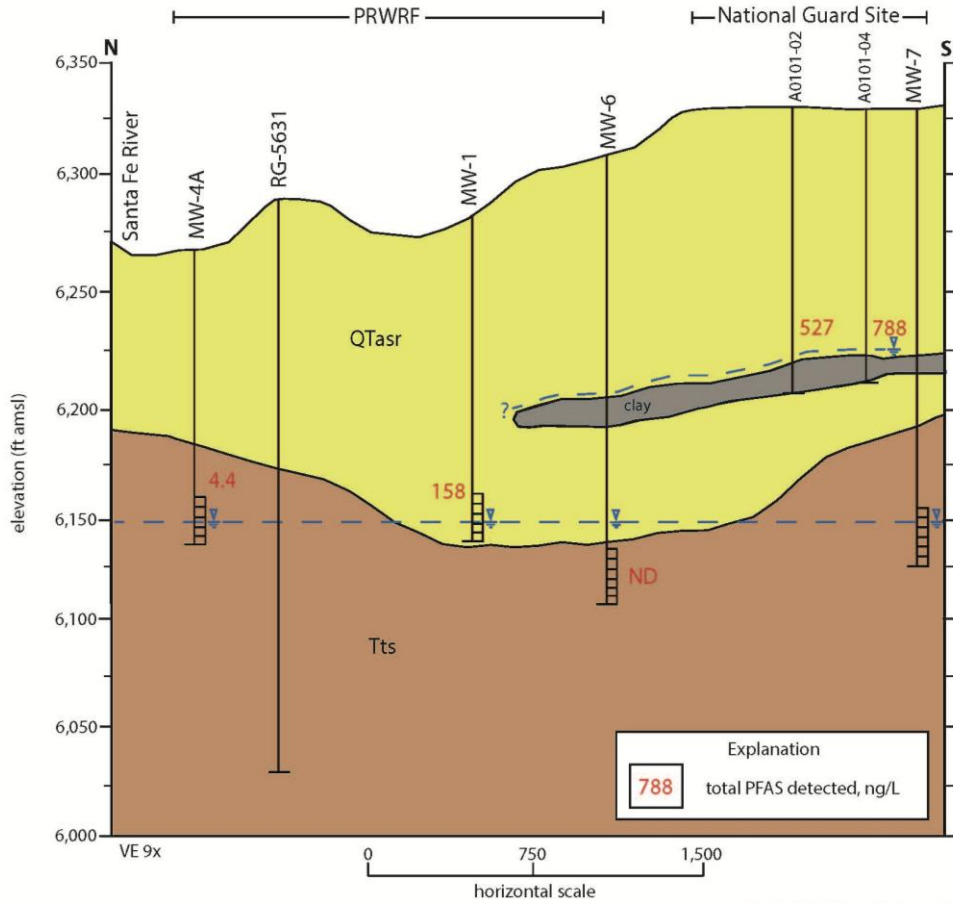


Monitoring Well Network

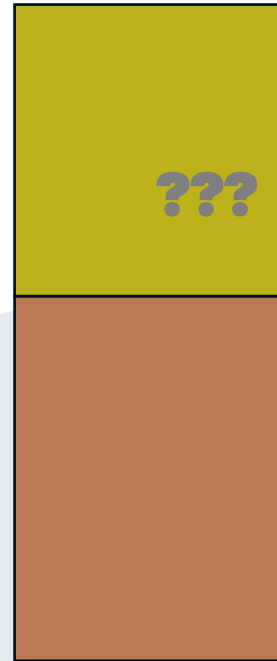
- Santa Fe Airport Data Gap
- Santa Fe River
- 3 locations in each area
 - 3 monitoring wells per location targeting:
 - Ancha
 - Tesuque
 - Perched zone



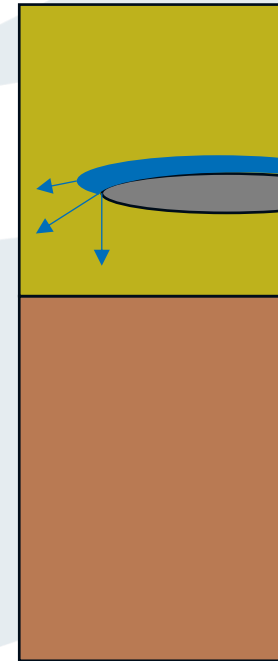
Monitoring Well Network



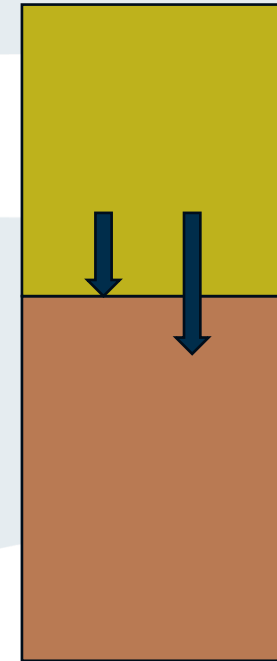
Perched zone



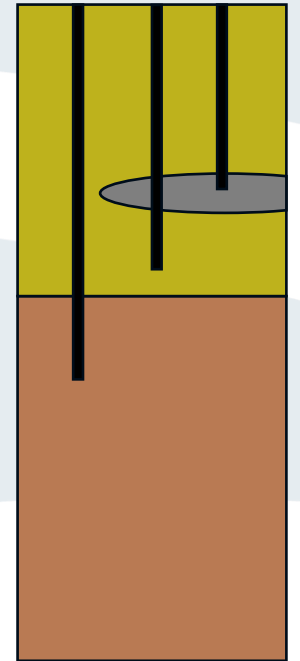
Perched zone PFAS



Ancha - Tesuque interaction

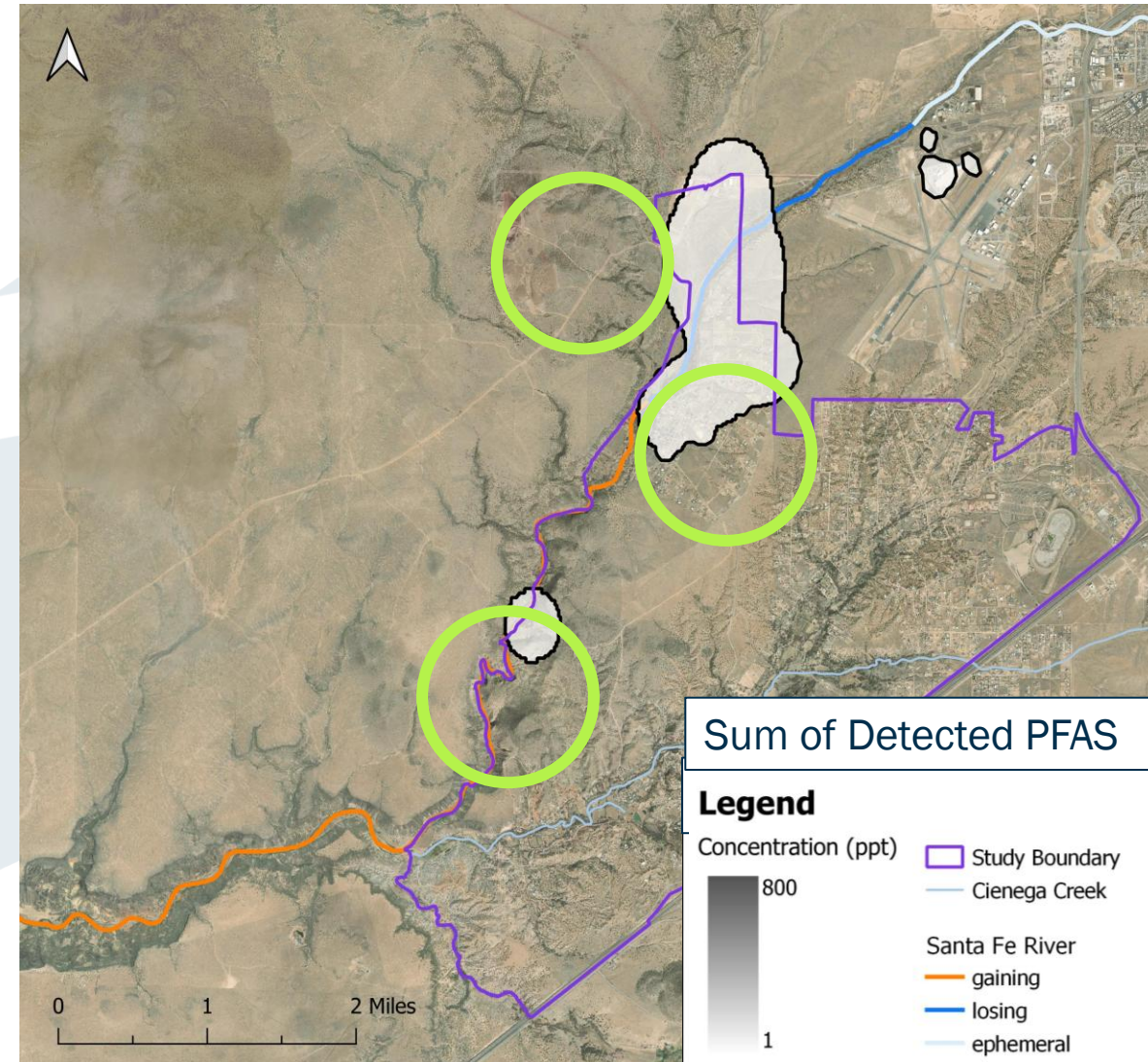


MW configuration



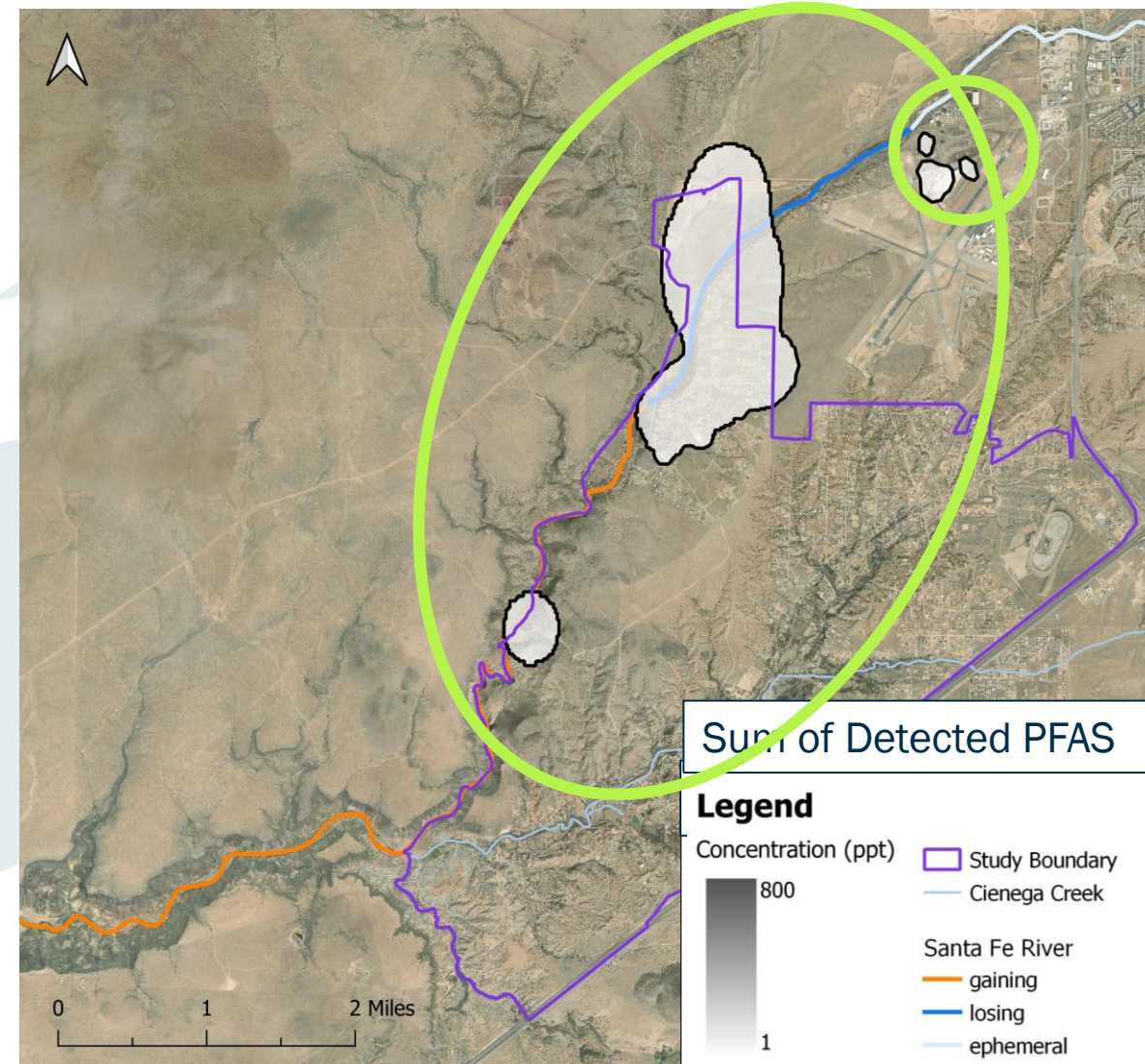
Data Gap and Santa Fe River Sampling

- Existing well west of La Cieneguilla
- Drinking water wells at southern end of La Cieneguilla
- Surface water and sediment sampling in the Santa Fe River



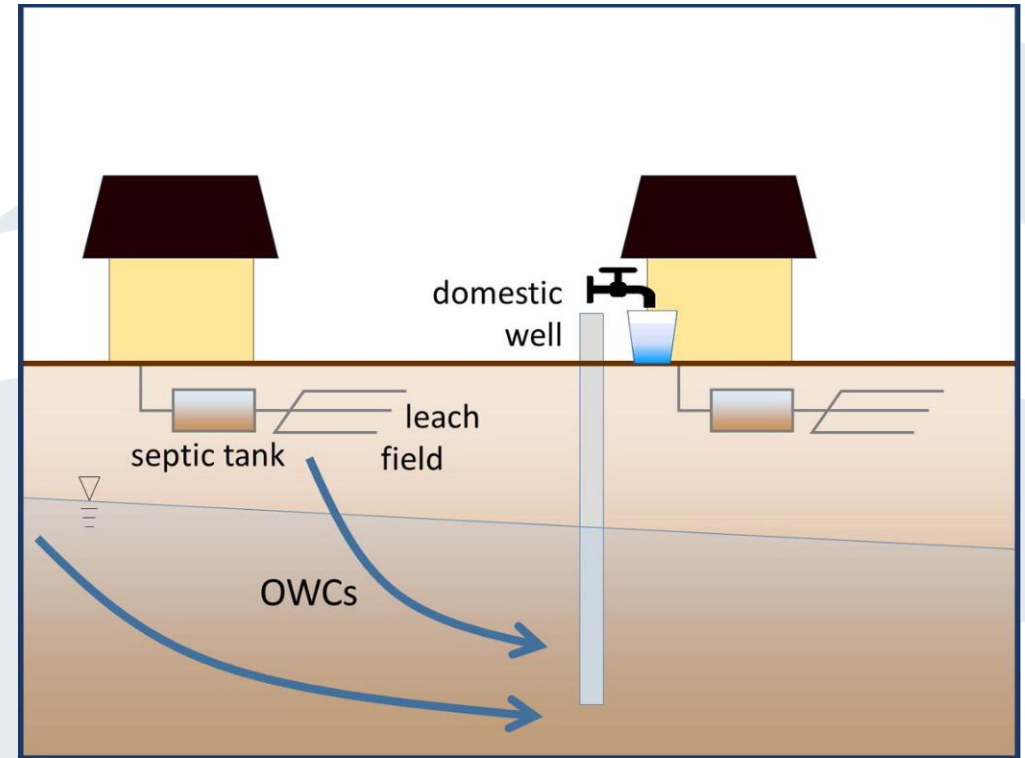
Plume Characterization and Migration Potential

- Quarterly sampling of domestic drinking water wells
 - Plume movement
 - Seasonal variation
- Leaching potential characterization at the PRWRF
 - Remediation need
 - Potential surface and groundwater impact



Septic Study

- Samples collected at domestic drinking water well and septic system
- Understand impact of septic usage on PFAS contamination



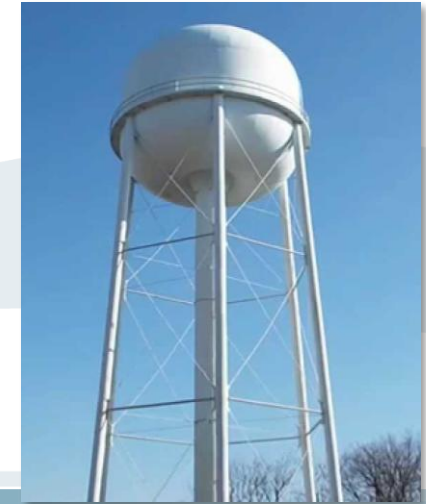
OWC - Organic wastewater compounds

Mitigation & Remediation



Short-Term

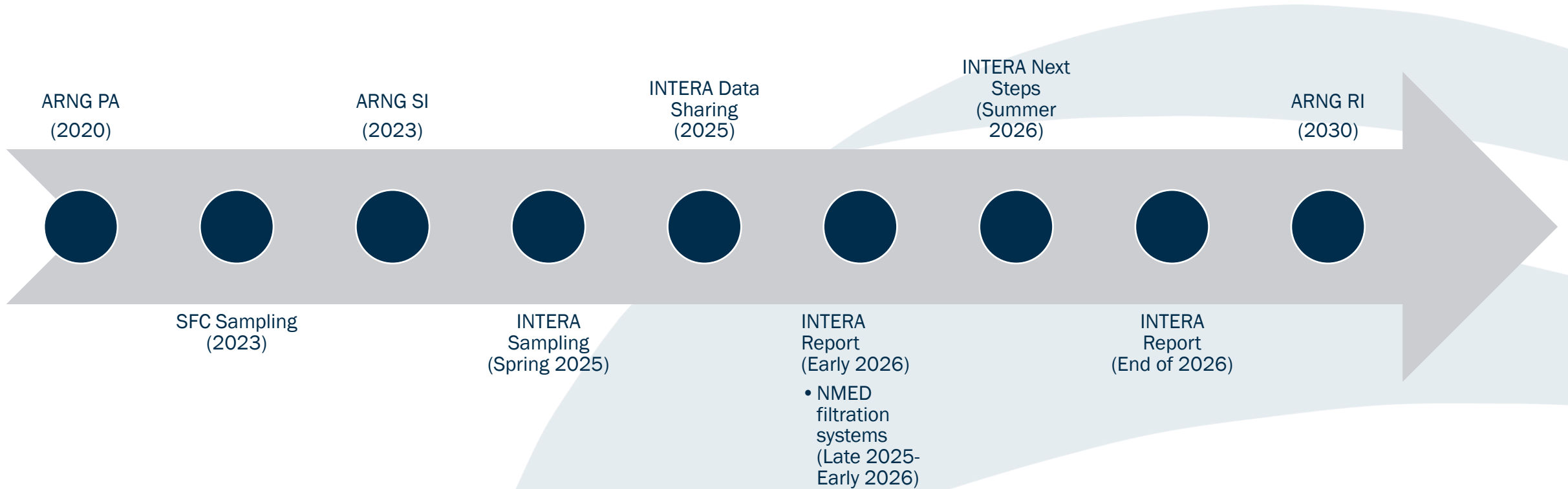
Household Point of Use (POU)
Point of Entry (POE)
Treatment



Long-Term Options

Long-term POU Treatment Program
Deeper Wells?
Connection to existing systems
Remediation

Project Timeline



Questions and Discussion
