

Backup Locations

CF Padilla Crew #2 Sheridan's Crew
Installing manholes at following reaches
FWD05_SAN, FWD10_SAN

CF Padilla Crew #2 Sheridan's Crew FWD46
Grubbing, Layout, pothole and pipeline install

**CF Padilla
FWD21** Clearing and grubbing

CF Padilla Crew #4 Roberto's Crew
FWD20_SAN on CR-84/Evergreen Lane Intersection
Grubbing, layout, pothole, and installing pipeline
TCP submitted for road closure & flagmen

Smithco Crew #1 Alex's Crew
FWD27_SAN/FWT02_RWA to El Rancho Tank
Grubbing, potholing, and installing pipeline
TCP submitted for shoulder work

Smithco Crew #2 San Bar
RWT01/NFC01_RWA on NM502
Guardrail/paint replacement
TCP submitted for lane closure

Google Earth

Image © 2025 Airbus

3 mi



CF Padilla Crew #2 Sheridan's Crew
FWD46_SAN on Deer Tail Road
Grubbing, layout, potholing, installing pipeline.

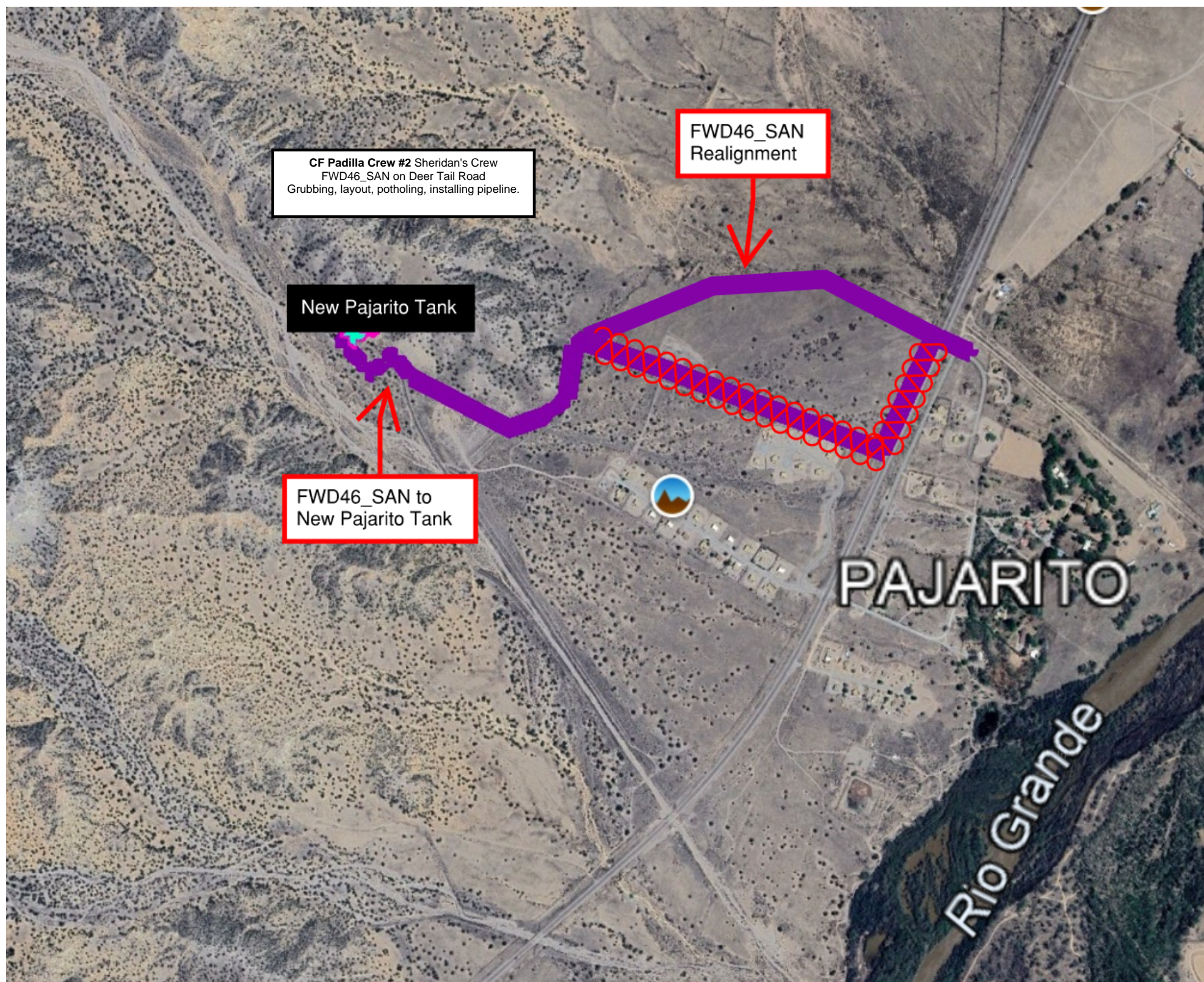
FWD46_SAN
Realignment

New Pajarito Tank

FWD46_SAN to
New Pajarito Tank

PAJARITO

Rio Grande





Duran Enterprises De Santa Fe Arroyo de San Antonio

Arroyo Acequias

San Antonio Ditch

CF Padilla Crew #4 Roberto's Crew
FWD20_SAN on CR-84/Evergreen Lane Intersection
Grubbing, layout, pothole, and installing pipeline
TCP submitted for road closure & flagmen

San Antonio Catholic Church

Alignment

Corridor

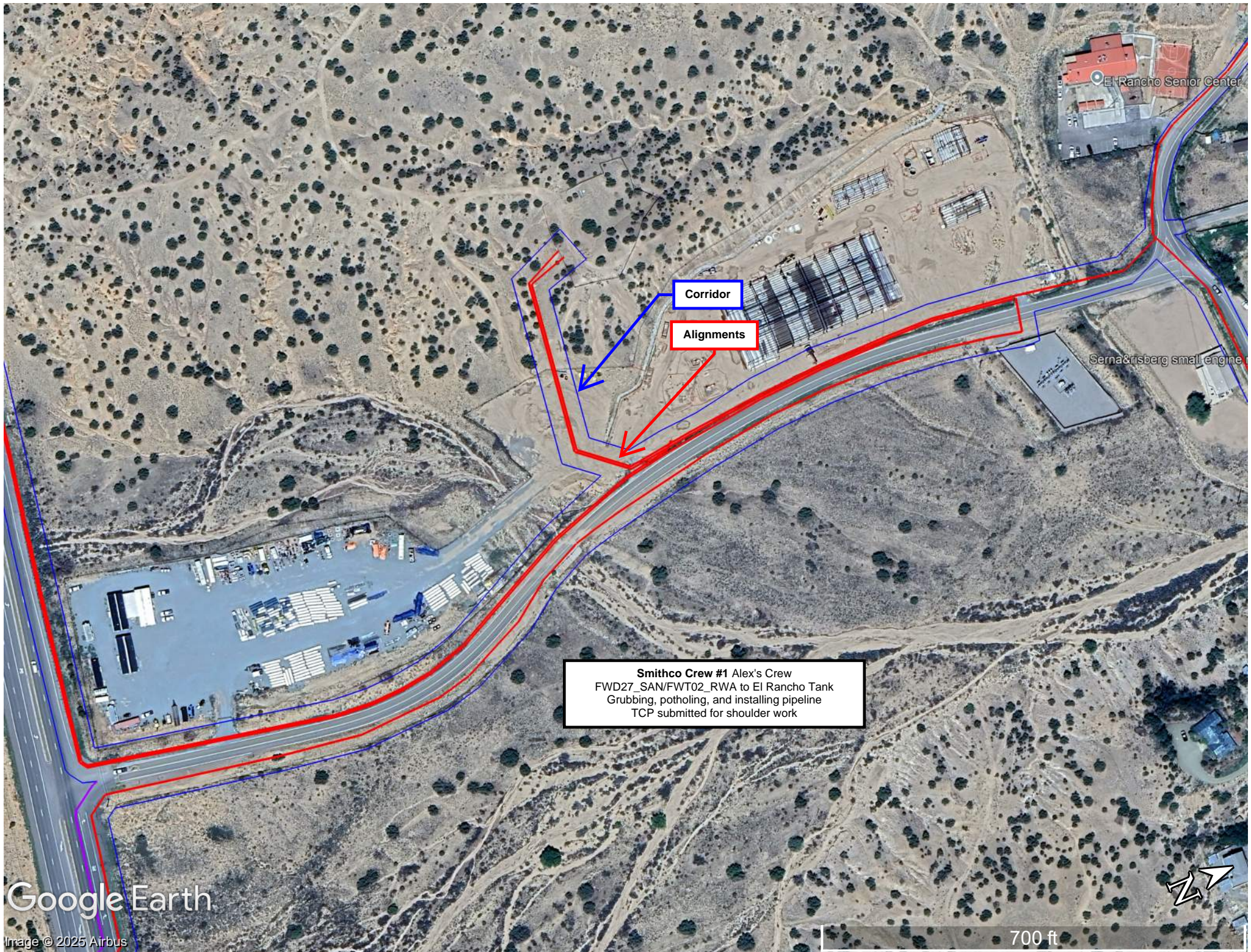
El Rancho Senior Center
Serna & Risberg small

Google Earth

Image © 2025 Airbus

2000 ft





Corridor

Alignments

Smithco Crew #1 Alex's Crew
FWD27_SAN/FWT02_RWA to El Rancho Tank
Grubbing, potholing, and installing pipeline
TCP submitted for shoulder work

Google Earth

Image © 2025 Airbus

700 ft

