

Backup Locations

CF Padilla Crew #1 Sam's Crew
FWD16_SAN near San I Booster Station
Excavating and installing PRV Vault with crane

CF Padilla Crew #2 Sheridan's Crew
Installing manholes on FWD44_SAN on CR-84c

Smithco Crew #2 Jose's Crew
Hydrotesting and disinfecting Raw Water Line on NM502

CF Padilla Crew #1 Sam's Crew
FWD13_SAN on Tunyo Po
Installing tie-ins to PRV vault

CF Padilla Crew #3 Mike's Crew
FWD09_SAN on Agoyo Po
Grubbing, layout, pothole, and installing pipeline

Smithco Crew #1 Alex's Crew
FWT05_RWA on Entrada El Rancho
Grubbing, layout, pothole, and installing pipeline

CF Padilla Crew #5 J&E Crew
FWD07_RWA on CR-101e
Installing tie-ins to PRV vault

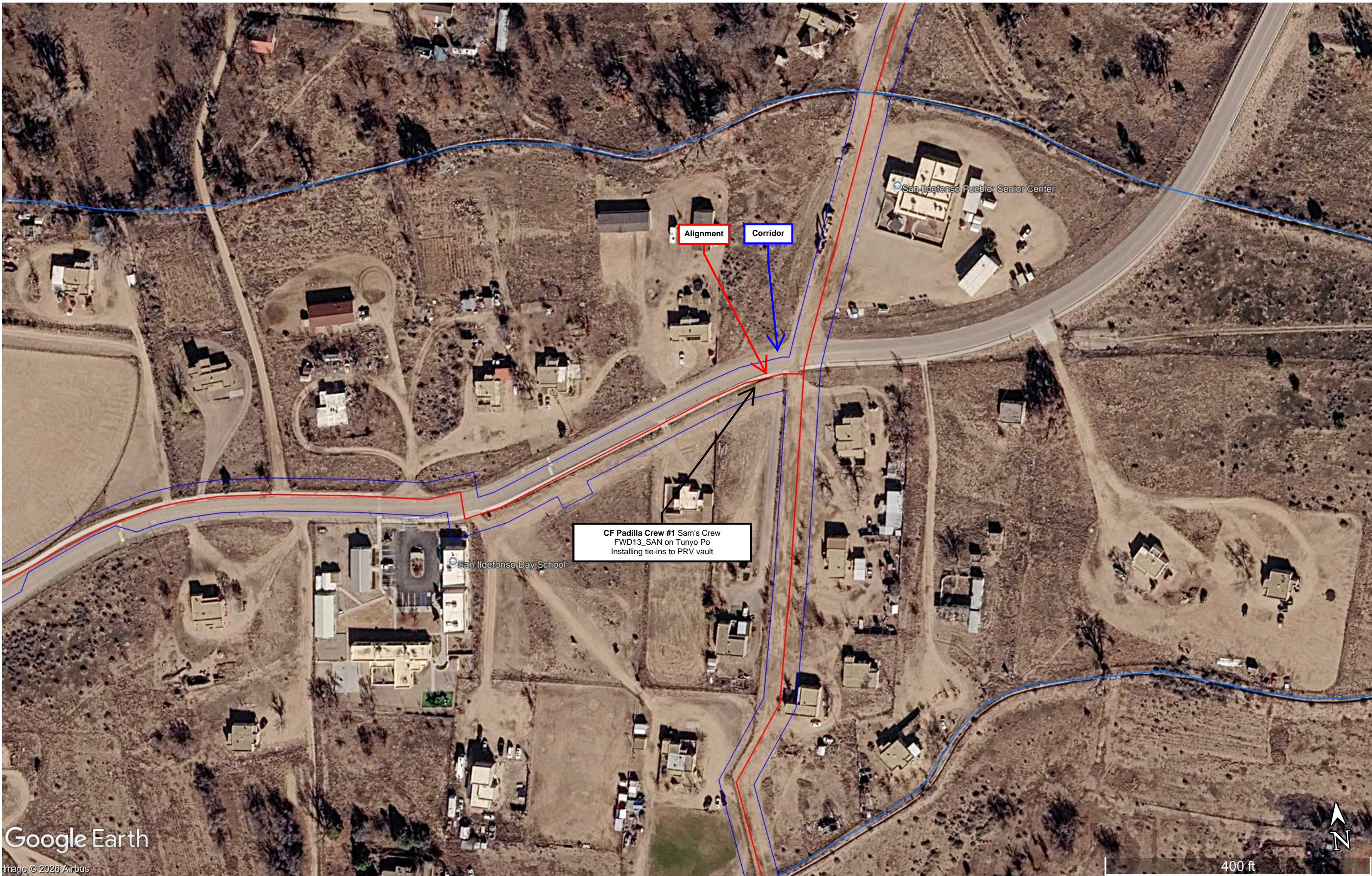
CF Padilla Crew #2 Sheridan's Crew
FWD07_RWA on CR-101e
Installing manholes

CF Padilla Crew #4 Roger's Crew
FWD20_SAN on CR-84 heading west
Grubbing, layout, pothole, and installing pipeline

Texas Aquastore Crew #1
Correcting anchor bolts at El Rancho Tank

Loenbro (tentative)
Installing carbon steel pipe
at Intake and Collector
Wells





Alignment

Corridor

CF Padilla Crew #1 Sam's Crew
FWD13_SAN on Tunyo Po
Installing tie-ins to PRV vault

San Ildefonso Pueblo Senior Center

San Ildefonso Day School



Pojoaque River

CF Padilla Crew #1 Sam's Crew (pending calcs from sub)
FWD16_SAN near San I Booster Station
Excavating and installing PRV Vault with crane

Alignment

Corridor

San Ildefonso Pueblo Senior Center



Jacona Ranch

John Ruybalid - Reverse Mortgage Consultant

CF Padilla Crew #5 J&E Crew
FWD07_RWA on CR-101e
Install tie-ins to PRV vault.

CF Padilla Crew #2 Sheridan's Crew
FWD07_RWA on CR-101e
Installing manholes

Jaconita

Corridor

Alignment



CF Padilla Crew #3 Mike's Crew
FWD09_SAN on Agoyo Po
Grubbing, layout, pothole, and installing pipeline

Corridor

Alignment





Duran Enterprises De Santa Fe Arroyo de San Antonio

Arroyo Acequias

San Antonio Ditch

CF Padilla Crew #4 Roger's Crew
FWD20_SAN on CR-84 heading west
Grubbing, layout, pothole, and installing pipeline

San Antonio Catholic Church

Alignment

Corridor

El Rancho Senior Center

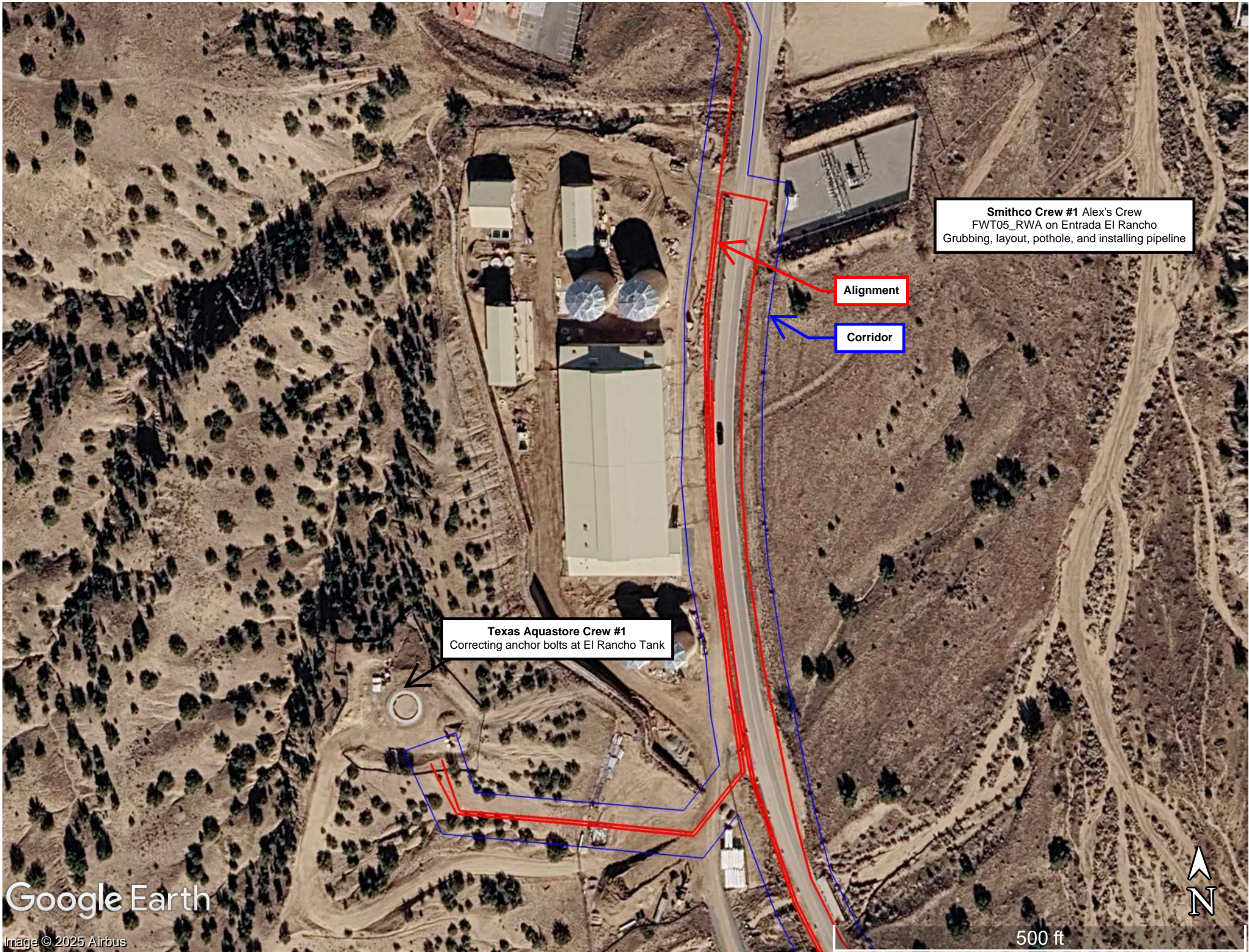
Serna & Risberg small

Google Earth

Image © 2025 Airbus

2000 ft





Smithco Crew #1 Alex's Crew
FWT05_RWA on Entrada El Rancho
Grubbing, layout, pothole, and installing pipeline

Alignment

Corridor

Texas Aquastore Crew #1
Correcting anchor bolts at El Rancho Tank

Google Earth

Image © 2025 Airbus



500 ft