

Backup Locations

CF Padilla Crew #1 Sam's Crew
FWD16_SAN near San I Booster Station
Excavating and installing PRV Vault with crane

CF Padilla Crew #2 Sheridan's Crew
Misc appurtenances on completed pipelines

Upcoming

CF Padilla Crew #1
Excavating and setting control valve vaults at existing tank sites

814 Solutions
Black Mesa Tank
Installing temporary fence and SWPPP BMPs (tentative)

CF Padilla Crew #3 Mike's Crew
FWD09_SAN on Agoyo Po
Installing pipeline appurtenances

Upcoming Acequia Crossings:
Ortiz Ditch
de Los Indios

CF Padilla Crew #4 Roger's Crew
FWD20_SAN on CR-84 heading west
Grubbing, layout, pothole, and installing pipeline

CF Padilla Crew #5 Delmar's Crew
Potholing on FWD20_SAN

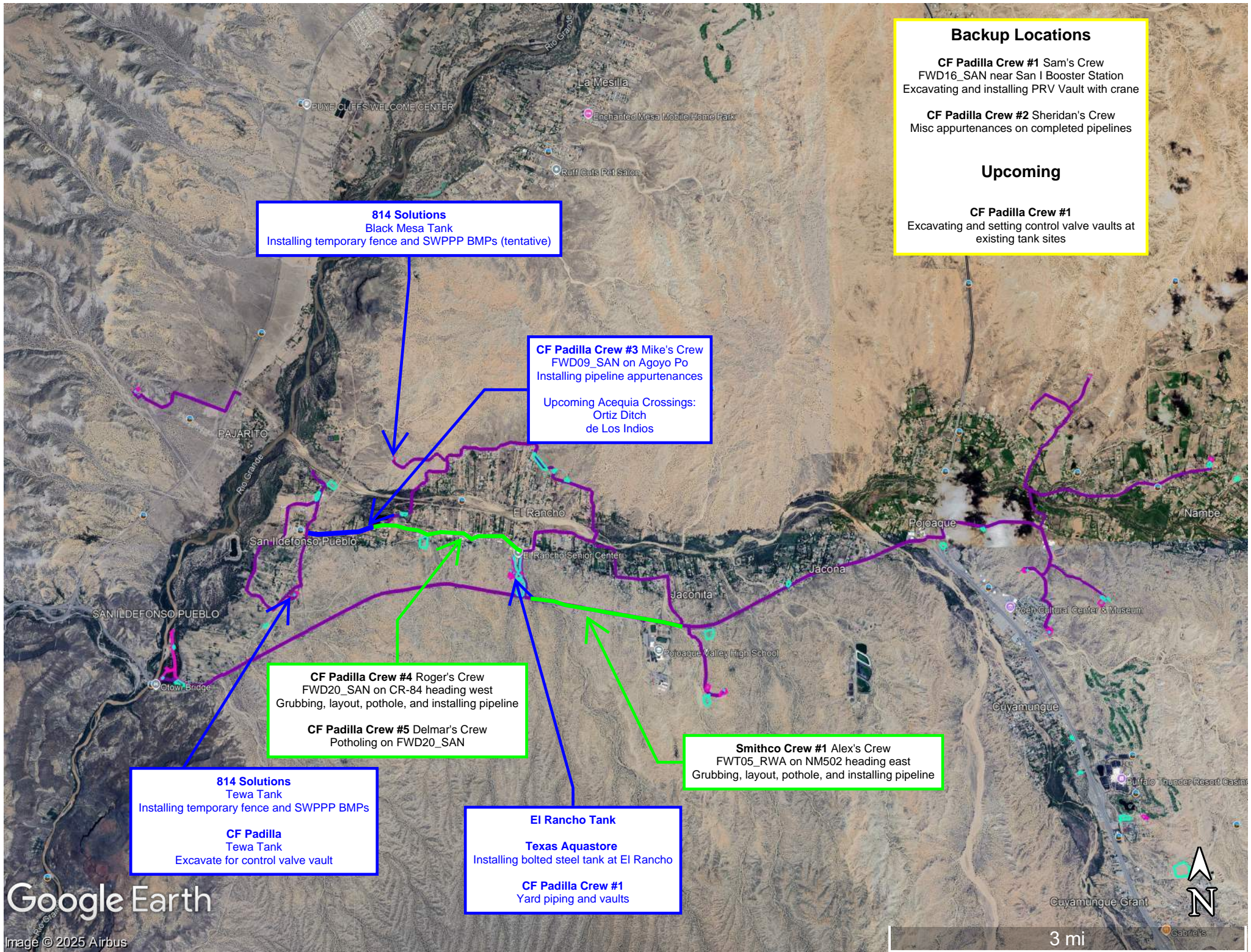
Smithco Crew #1 Alex's Crew
FWT05_RWA on NM502 heading east
Grubbing, layout, pothole, and installing pipeline

814 Solutions
Tewa Tank
Installing temporary fence and SWPPP BMPs

CF Padilla
Tewa Tank
Excavate for control valve vault

El Rancho Tank
Texas Aquastore
Installing bolted steel tank at El Rancho

CF Padilla Crew #1
Yard piping and vaults



CF Padilla Crew #3 Mike's Crew
FWD09_SAN on Agoyo Po
Installing pipeline appurtenances

Upcoming Acequia Crossings:
Ortiz Ditch
de Los Indios

Alignment

Corridor





Duran Enterprises De Santa Fe Arroyo de San Antonio

Arroyo Acequias

San Antonio Ditch

CF Padilla Crew #4 Roger's Crew
FWD20_SAN on CR-84 heading west
Grubbing, layout, pothole, and installing pipeline

San Antonio Catholic Church

Alignment

Corridor

El Rancho Senior Center

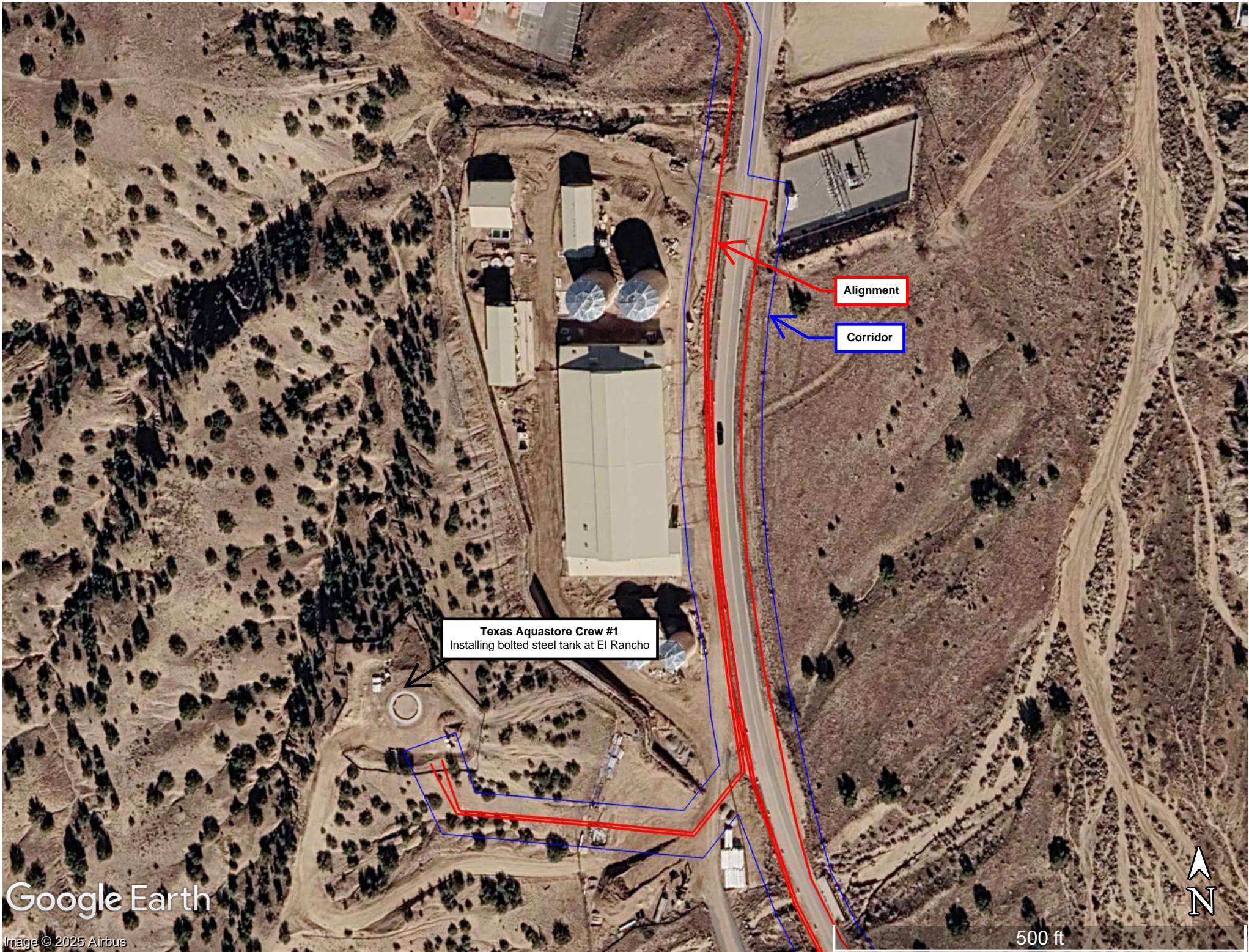
Serna & Risberg small

Google Earth

Image © 2025 Airbus

2000 ft





Alignment

Corridor

Texas Aquastore Crew #1
Installing bolted steel tank at El Rancho





Smithco Crew #1 Alex's Crew
FWT05_RWA on NM502 heading east
Grubbing, layout, pothole, and installing pipeline

Corridor

Alignment

