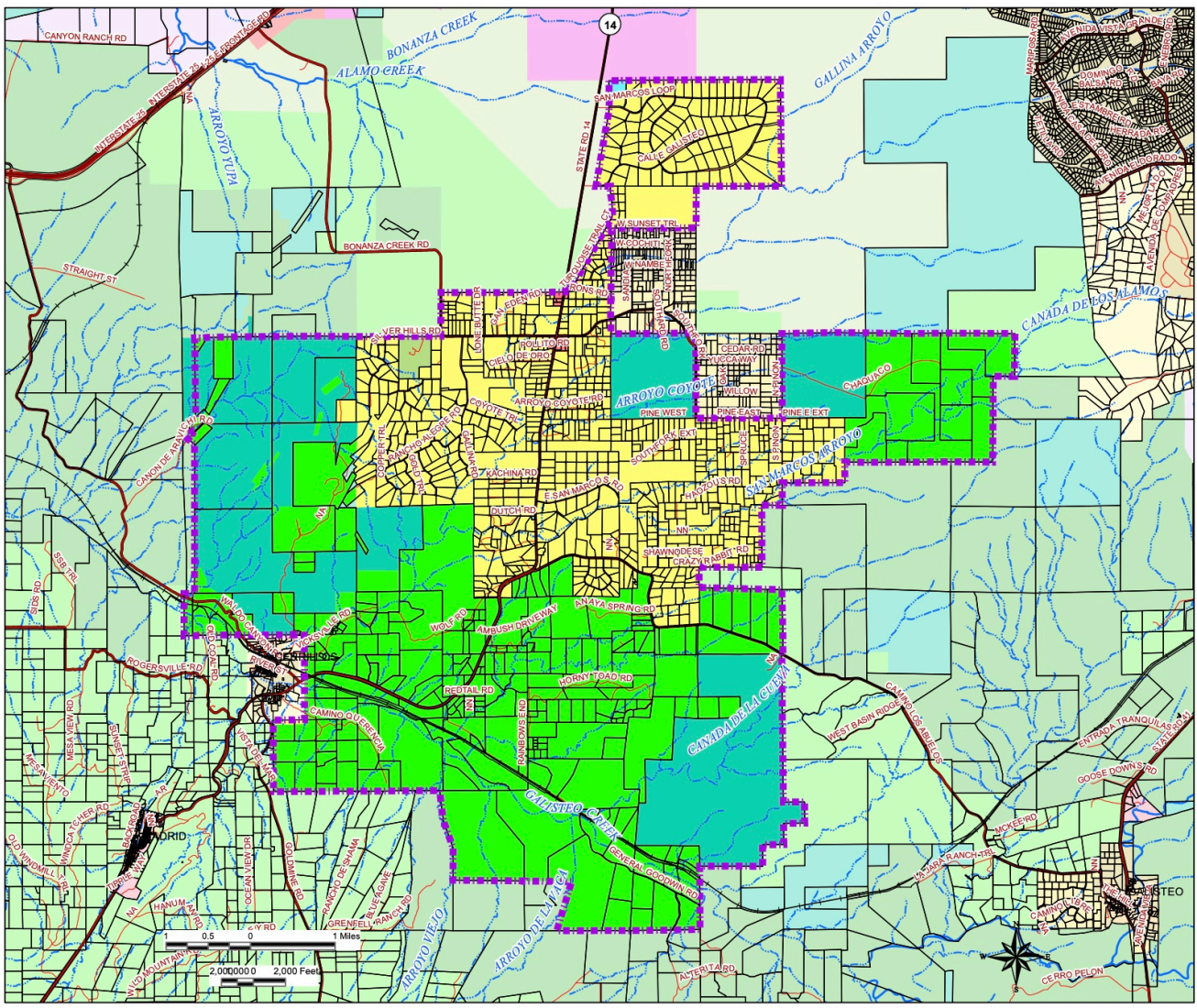


# Santa Fe County San Marcos Community Land Use Map

## Legend

- San Marcos Community Planning Area
- Parcels
- San Marcos Community Plan Land Use Map**
  - Rural
  - Rural Fringe
  - Rural Residential
  - Commercial Neighborhood
  - Public / Institutional
- Not Under Santa Fe County Zoning Jurisdiction**
  - Tribal Lands
  - Federal and State Public Lands
- Roads**
  - Minor Roads
  - Major Roads
- Railroad Lines**
  -
- Rivers and Streams**
  - Intermittent
  - Perennial



Santa Fe County  
Growth Management  
Department  
Planning Division

June 22, 2015  
san\_marcos\_community\_  
plan\_land\_use\_map\_6\_22\_15\_tabloid.mxd

Use	Function	Structure	Activity	SMD RUR	SMD RUR-F	SMD RUR-R	SMD CN	Special Conditions
<b>Commercial</b>								
Shop or store with drive-through facility		2210		X	X	X	X	
Store or shop without drive through facility		2230		X	X	X	P	
Research and development services (scientific, medical, and technology)	2416			X	X	X	P	
Bars, taverns and nightclubs				X	X	X	X	
<b>Industrial, manufacturing and wholesale trade</b>								
Food, textiles, and related products				X	X	X	X	
<b>Transportation-related facilities</b>								
Courier and messenger service facilities	4190			X	X	X	X	
<b>Agriculture, forestry, and conservation/open space</b>								
Commercial greenhouses		8500		X	P	X	C	

9.14 San Marcos – 4 zoning districts

**Cannabis production-**

- **Commercial Greenhouse**
  - Permitted use in Rural Fringe,
  - Conditional use in Commercial Neighborhood
- **Outdoor cannabis production**
  - Permitted Use in Rural zoning districts.
  - Conditional Use in Rural Fringe and Rural Residential

**Selling Cannabis-** Cannabis retailers with drive-through facilities would be prohibited throughout San Marcos. Cannabis retailers without drive-through facilities would be Permitted in the Commercial Neighborhood zoning district.

**Consuming Cannabis -** San Marcos would not allow any cannabis consumption areas in this overlay district.

- **Research and development**
  - P in Commercial Neighborhood
- **Food, Textiles, and Related Products**
  - X throughout
- **Commercial Greenhouse**
  - C in Commercial Neighborhood
  - P in Rural Fringe
- **Store or Shop with drive-through**
  - X throughout
- **Store or Shop without drive-through facility**
  - P in Commercial Neighborhood
- **Bars, taverns and nightclubs**
  - X throughout