

PROGRAM EVALUATION/ASSESSMENT

Permittees need to evaluate the effectiveness of their Stormwater Management Program and chosen best management practices (BMPs) to determine whether the BMPs are reducing the discharge of pollutants from their systems to the maximum extent practicable and to determine if the BMP mix is satisfying the water quality requirements of the Clean Water Act. Permittees also are required to assess their progress in achieving their program’s measurable goals. If there is an indication of a need for improved controls, permittees can revise their mix of BMPs to create a more effective program.

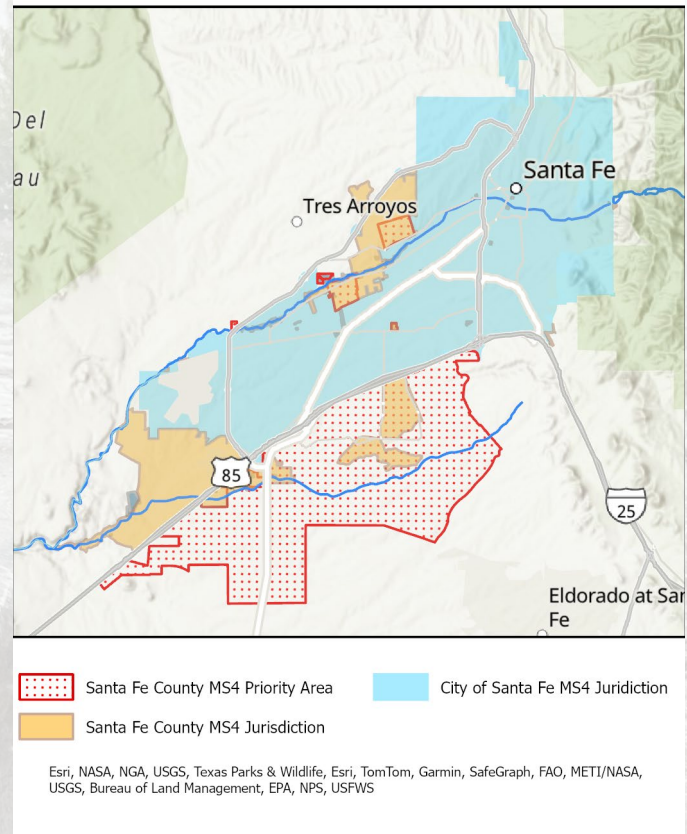
Resources:

Santa Fe County Stormwater Webpage:
<https://www.santafecountynm.gov/public-works/utilities/stormwater>

EPA National Menu of Best Management Practices (BMPs) for Stormwater:
<https://www.epa.gov/npdes/national-menu-best-management-practices-bmps-stormwater>

Report an illicit discharge:
Call (505) 986-6219, or
email publicworks@santafecountynm.gov

Stormwater Management Areas



WATER QUALITY EFFECTS US ALL

Ensuring surface water quality through effective stormwater management extends beyond the management areas illustrated above. These areas are a priority for Santa Fe County due to their immediate drainage into the Santa Fe River. However, the entire County is subject to enforcement of proper stormwater management practices through the EPA’s MS4 and CGP permit requirements.

Santa Fe County Stormwater Management Program



June 2025

Santa Fe County is implementing a Stormwater Management Program. This will reduce the levels of pollutants that adversely impact our area's water quality. These pollutants are picked up by rain and snow runoff on yards, streets, parking lots, and roofs and are transported to area arroyos and waterways.

DID YOU KNOW ...

- That oil and grease are washed off of parking lots and streets during rainfall and snow melting, and end up in county stormwater inlets, storm drains and arroyos?
- That it is illegal to discard anything (including anti-freeze, oil, paint, solvents, fuels, trash, tree clippings, leaves, RV septage, concrete wash, soil, and mud) into County drop inlets, ditches, or drainage channels?
- The County's sanitary sewer, which collects discharges from showers, sinks, toilets and washing machines is NOT combined with the County's storm sewers that empty to area arroyos and waterways?
- Sand, dirt, mud, and other sediments are considered pollutants when they enter the County's storm sewer system, arroyos, or waterways?
- That the public will be involved in preventing and solving storm sewer pollution problems? The County's Stormwater Management Plan can not be implemented without the public's participation.

STORMWATER POLLUTION

Stormwater is rainfall and snow melt that passes over land, rooftops, yards, parking lots, and streets before draining into drop inlets, culverts, drainage channels, arroyos, roadside ditches, and waterways. Stormwater runoff picks up pollutants as it finds its way to arroyos and waterways.

Pollutants include litter, illegally dumped substances, sediment, petroleum products, pesticides, heavy metals, and pet waste, to name just a few. These pollutants impair water quality and damage ecosystems.

MUNICIPAL STORM SEWER

Most stormwater generated within the County's MS4 jurisdiction enters the municipal separate storm sewer system (MS4) and ultimately discharges to the Santa Fe River without treatment. Santa Fe County does NOT have a "combined" sewer system, i.e., a system that drains both stormwater and sanitary water (from showers, toilets, and sinks) to a water treatment plant. A MS4 includes not only inlets and culverts, but streets, curbs, roadside ditches, and gutters, as well as drainage channels of all sizes. **Santa Fe County is designated as an operator of a "regulated small MS4" by the Environmental Protection Agency (EPA) and must implement certain practices to minimize the level of pollution in stormwater runoff to the maximum extent practical.**

NPDES

The NPDES is EPA's National Pollutant Elimination Discharge System which designates Santa Fe County as a "Regulated Small MS4". Under an NPDES permit issued by the EPA, the County must implement certain practices to minimize the level of pollution in stormwater runoff to the maximum extent practical.

STORMWATER MANAGEMENT PLAN

The Phase II Rule defines an MS4 stormwater management program that comprises six elements which, when implemented together, are expected to result in significant reductions of pollutants discharged into receiving waterways. Santa Fe County submitted a Stormwater Management Plan, containing the six "Minimum Control Measures" to the EPA in 2024. The six measures form the foundation of the County's management of stormwater runoff.

The **Santa Fe County Stormwater Management Program Plan** ensures compliance with EPA's stormwater discharge permit for our municipal separate stormwater system.

The six MS4 program elements are outlined below:

1. Public Education and Outreach

Distributing educational materials and performing outreach to inform citizens about the impacts polluted stormwater runoff discharges can have on water quality.

2. Public Participation / Involvement

Providing opportunities for citizens to participate in program development and implementation, including effectively advertising public meetings and/or encouraging citizen representation on a stormwater management panel.

3. Illicit Discharge Detection and Elimination

Developing and implementing a plan to detect and eliminate illicit discharges into the storm sewer system (includes finalizing a system map and informing the community about hazards associated with illegal discharges and improper disposal of waste).

4. Construction Site Runoff Control

Ensuring that new development and redevelopment do not result in stormwater runoff through the implementation and enforcement of appropriate interventions.

5. Post Construction Runoff Control

Address discharges or post-construction stormwater runoff from new development and redevelopment areas. Controls include protecting sensitive areas (e.g. wetlands), use of structural "best management practices" (BMPs), and green stormwater infrastructure (GSI)

6. Pollution Prevention / Good Housekeeping

Implementing a program to prevent or reduce pollutants runoff from municipal operations, including municipal staff training on pollution prevention measures and techniques.

