



# County Monthly Memo

From the Santa Fe County Manager

VOLUME 1, ISSUE 1

JANUARY 2014

## Board Of County Commissioners Upcoming Schedule

- January 28 at 1pm
- February 11 at 2pm
- February 25 at 1pm
- March 11 at 2pm
- March 25 at 1pm
- April 8 at 2pm
- April 29 at 1pm
- May 13 at 2pm
- May 27 at 1pm
- June 10 at 2pm
- June 24 at 1pm

All Meetings are held  
on Tuesday in the  
County Commission  
Chambers

All meetings are  
broadcast live at  
[www.santafecountynm.gov](http://www.santafecountynm.gov)  
and on Comcast Ch. 28  
or you can listen live on  
Que Suave AM810

## Santa Fe County Adult Detention Facility Staff Donates Coats for Kids and Adults

The Santa Fe County Adult Detention Facility staff and volunteers pitched in to make a few Santa Fean's winter a little warmer with some coats, hats and gloves this year. On Friday, December 20, 2013 staff from the Adult Detention Facility met with children who needed winter coats from Sweeney Elementary to help them pick out new coats, hats and gloves.

The donations were an assortment of new and slightly used items. In total 30 jackets were donated to the children at Sweeney Elementary. The Adult Detention Facility Staff also collected men's and women's coats that were donated to the Esperanza Shelter in Santa Fe.



*"Our staff is amazing at pitching in to make a bigger impact in the community, the coat drive is a great example of the dedication everyone has to the community," said Pablo Sedillo III, Public Safety Department Director. He continued, "It was an honor to participate in this event and to see the children pick out jackets, knowing they will be warm this winter."*

## Food Depot Says Thank You to SFC

The Food Depot recently acknowledged the efforts of Santa Fe County staff for hosting a Thanksgiving food drive. The Santa Fe County food drive collected 1,013 pounds of assorted nonperishable food and \$195 in monetary donations. Each dollar donated buys three pounds of food through the depot, so the monetary donation equaled 1,598 pounds of food, providing 2,131 meals for hungry people in Northern New Mexico. The Food drive was organized and coordinated through the Santa Fe County Community Services Department



## Santa Fe County DWI Program Cab Ride Home \$5 in 2014

Santa Fe County DWI Program would like to announce in 2014, the Santa Fe County Cab Ride Home will be \$5 a cab for one or two riders and \$10 a cab for three or more. The subsidized Cab Ride Home service will continue to offer reduced cab rides on Friday and Saturday nights from 5:30 p.m. to 2:30 a.m.

**CALL**  
**505-438-0000**  
**for a safe CAB**  
**Ride Home**

The cost of a cab ride will be reduced to \$1 during special holidays and high DWI crash times like New Year's Eve, Fiestas de Santa Fe, 4th of July and St. Patrick's Day.

The Santa Fe County DWI Program subsidizes the Cab Ride Home Program with funds generated by the New Mexico Liquor Excise Tax. Crash and arrest data show Friday and Saturday nights from 5:30 p.m. to 2:30 a.m. is typically when more drunk drivers are on the road.

*"The program would like to salute the more than 13,000 individuals who utilized the \$1 cab service in 2013 instead of getting behind the steering wheel and driving under the influence of alcohol."*

*~Lupe Sanchez, DWI Planning Coordinator.*

**Board of County  
Commissioners  
Unanimously  
Approve the  
Sustainable Land  
Development  
Code**

## Sustainable Land Development Code

Santa Fe Board of County Commissioners unanimously approved the Sustainable Land Development Code (SLDC) at the December 10, 2013 Board meeting.

The Code provides a legal framework for implementing land development and growth management policies of the Sustainable Growth Management Plan adopted in 2010.

The Sustainable Land Development Code will not become effective until the County Zoning Map is adopted. The required zoning map public review process is anticipated to begin in early 2014.

An amendment to the SLDC unanimously approved by the commission requires the SLDC to be reviewed upon the adoption of the zoning map, with additional reviews six months afterward.

The Final Adopted SLDC which includes about a dozen amendments voted on by the BCC will be available to the public once it is recorded in the Clerk's Office.

## Next Steps for the SLDC, Adopting a Zoning Map

"The next step in the Sustainable Land Development Code (SLDC) process is review and adoption of the Zoning Map. We will undertake a public process, to include the required legal noticing, in early 2014 and will then take the proposed zoning map to the BCC. Upon approval of the zoning map the SLDC will come into effect." according to the Growth Management Director, Penny Ellis-Green.

# Santa Fe County Seeks Input on Old Courthouse

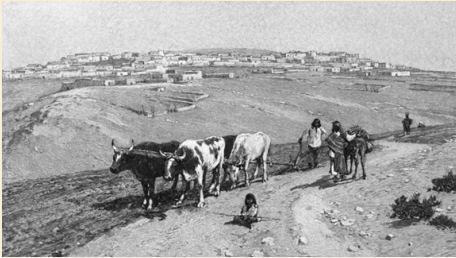
Santa Fe County is asking residents to provide input through a **Citizen Survey on the Old First Judicial Courthouse**, located on Catron Street. The building was vacated in 2013 after Santa Fe County completed the new Steven Herrera First Judicial Complex located on Montezuma Ave.

Residents can access the survey by visiting [www.santafecountynm.gov](http://www.santafecountynm.gov) and clicking the link **Santa Fe County Citizen Survey Old First Judicial Courthouse** located under Hot Topics.

The County has developed a feasibility analysis of various options for the use of the Old First Judicial Courthouse property. One option is to develop the site with a **One-Stop County Administrative Building** for constituents to conduct County business.

**Free Public Lecture Presented by:** El Rancho de las Golondrinas & The NM Museum of Art

**"Indian Removal and the Violent Origins of Spanish and Mexican Settlement In New Mexico"**



**Thursday, January 30, 2014, 6:00 pm**  
**St. Francis Auditorium**  
**at the New Mexico Museum of Art**  
**No reservations required - free to the public!**

The arrival of the Americans in the 1840s exacerbated land issues which have continued to be a major and contentious concern for both Native and Hispano communities in northern New Mexico.

Join us for this fascinating talk, the first of three in Las Golondrinas' Winter Lecture Series, "Speaking of Tradition: New Perspectives on Old Traditions."

Dr. Correia is an Assistant Professor in the department of American Studies at U N M. He is the author of *Properties of Violence: Law and Land Grant Struggles in Northern New Mexico*.

## Renewable Energy and Energy Efficiency Makes Sense For Everyone!

- Adoption of cost-effective energy efficiency measures by businesses and homeowners decreases energy utility costs, while creating locally-sourced clean energy
- Federal, electric utility and natural gas utility Incentives are available
- There are multiple benefits of energy efficiency and renewable energy (solar, wind, ground-coupled heat pumps, etc.)
- Money saved through energy efficiency stays in the local economy and contributes to overall job creation (not just clean energy-related)



## County Residents Will Lose Under State Plan

The December 29 New Mexican article “*Indigent Care Poised to be Hot Topic during the Session*” does a good job of summarizing the demise of the Sole Community Provider Program in New Mexico and the legislative changes proposed by the State Human Services Department (HSD). Less prominently displayed in the article is the disproportionate impact of HSD’s proposal on the health care safety net delivery system in Santa Fe County.

The New Mexico Indigent Hospital and County Health Care Act makes counties responsible for providing health care for residents who lack the funds to cover their health care costs. The act also granted counties the authority to impose a gross receipts tax to cover services. In 1987, Santa Fe County imposed the second one-eighth of the gross receipts tax, which generates approximately \$4 million per year to cover indigent hospital charges and community-based services for primary care, drug and alcohol treatment and mental health services. The hospital dollars were matched by the Human Services Department and Medicaid through the Sole Community Provider program; community-based services are funded exclusively by Santa Fe County for our residents. In 2013, the State Human Services Department submitted a proposal to the federal government for two new hospital programs to replace Sole Community Provider, the Uncompensated Care Pool and the Hospital Rate Increase. Larger hospitals, such as Christus St. Vincent, were excluded from funding under the pool but would benefit significantly from the Hospital Rate Increase. The state proposes funding this by taking the counties’ gross receipts tax that currently funds both hospital and community-based services.

The state’s proposal affects counties disproportionately, with potentially devastating consequences to Santa Fe County, as well as some other counties. The consequences of the full redirection of the county imposed tax are significant. If the state is successful in redirecting the county tax, Santa Fe County will no longer have funds for community-based services for our residents.

The current county tax structure devotes about \$2 million a year to agencies such as La Familia, Life Link, Santa Fe Recovery Center and others for primary care, drug and alcohol treatment and mental health services. If the redirect passes the Legislature, the current behavioral health system — already gutted by the recent Human Services audit shake-up — would be further weakened.

- Santa Fe County will see a lower leverage of its local tax funds and significantly less than other counties. Under the proposal Santa Fe County would be required to put up a match to generate about \$16 million for the state, only about half of which would come back to cover health care costs for our residents. Santa Fe County residents would get a lot less bang for their buck for health care services.
- The proposals run counter to health care reform efforts that promote more focus on primary care and preventive services and less on acute care and hospitalization.
- Santa Fe County also uses its gross receipt tax to fund ambulance services and burial services for Santa Fe County residents who are indigent; the state has no plan to cover these costs.

The state argues that the county safety net services are no longer necessary because everyone will have health insurance. Little consideration has been given to those people who will not meet the criteria for Medicaid but do not purchase insurance through the Health Insurance Exchange, the excruciatingly slow rate of enrollment in both Medicaid and the exchange and the ongoing costs of providing health care services to the undocumented.

The state should consider these questions and the inequitable impact on Santa Fe County before moving forward with its proposed plan in the legislative session.

*Judith Williams, Ph.D. is the chairwoman of the Santa Fe County Health Policy and Planning Commission.*



# Recycle Recycle Recycle in Santa Fe County

- **Paper**—Newspapers, junk mail, magazines, phone books, and white office paper are accepted for recycling.
- **Corrugated Cardboard** -Only flattened corrugated (has a wavy center) cardboard is accepted. Brown paper bags should be placed in with the corrugated cardboard. We cannot take paperboard boxes, i.e., shoe, gift, cereal, cracker etc... No waxed or wet cardboard.
- **Glass** – All colors of glass bottles and food jars accepted. No light bulbs, window glass, drinking glasses, mirror, ceramic, porcelain, or Pyrex.
- **Mixed Containers include** - Plastic containers (#1 and #2) with necks, check number on bottom of each container. Plastic milk and water jugs, clear and colored plastic soda bottles, juice bottles, laundry soap and shampoo bottles (lids must be removed). No other plastic containers accepted at this time.
- **Aluminum Cans & Foil, tin/steel** food cans and lids, empty aerosol cans, aluminum foil and pie pans are recycled. Cookware, auto parts, scrap metal, and alkaline batteries are accepted, however do not get placed into convenience center recycle bins.

## DID YOU KNOW?

Recycling of cardboard, newspaper, office paper, junk mail, and magazines is Mandatory in Santa Fe County.

Plastic, aluminum and tin containers can be mixed together with newspapers and mixed papers. Cardboard must be separated and placed in separate bins.

Styrofoam, plastic bags, motor oil bottles and plastic toys are not recycled.

Want more info visit [www.santafecountynm.gov/public\\_works/solidwaste/recycling](http://www.santafecountynm.gov/public_works/solidwaste/recycling)

## What's Happening in Santa Fe County

I would like to point out two areas of public concern and participation the first is the Old Judicial Courthouse Building and the second is the Aamodt Settlement process.

### Old Judicial Courthouse

SFC has an online survey and has hosted a public meeting to solicit public input for the Old Judicial Courthouse. Staff will present the public input results to the Board in the next month. Information on where to find the survey is on page 3. At the end of the day the question is should we stay or should we go? We need community input to see what the priority and needs of our residents are.

*What you should know*—Either way we are looking at creating a one stop shop for County Service, with ample parking. We recognize the need for parking and central services and we plan on addressing them, no matter where we are located.

**Aamodt**— Santa Fe County will be sponsoring public meetings and workshops to go over the Settlement Agreement and to help provide information. With the help of the other Settling Parties, the County will hold two public meetings. For those who want additional information, the County will also schedule smaller workshops and individual office hours.

*What you should know*—the public meetings will be held in February, below are the dates.

- Tuesday, Feb. 18, 2014 from 6 p.m. - 8 p.m. at the Pojoaque Middle School Auditorium
- Thursday, Feb. 20, 2014 from 6 p.m. - 8 p.m. at the Tesuque Elementary School Gym

If you need more information visit the Santa Fe County website [www.santafecountynm.gov](http://www.santafecountynm.gov) and click Aamodt Settlement Information under Hot Topics.



County Manager  
Katherine Miller



## Stay Connected With SFC



“Like” us on Facebook

Follow us on Twitter

**Address:**  
102 Grant Ave  
Santa Fe, NM 87501-2061

**Phone:**  
Santa Fe County Main Line

(505) 986-6200

**[www.santafecountynm.gov](http://www.santafecountynm.gov)**

### Other Important Numbers

Building Permits 505-986-6225

Fire Questions/ Burn Permit—505-992-3070

Utilities—505-992-9870

Public Works / Roads—505-992-3010

Human Resources—505-992-9880

Community Services—505-986-6274

Attorney's Office—505-326-6279

Teen Court—505-995-9555

Animal Control—505-992-1626

### Frequently Called Numbers:

Santa Fe County Assessor's Office – (505) 986-6300

Santa Fe County Clerk's Office – (505) 986-6280

Santa Fe County Treasurer's Office – (505) 986-6245

Santa Fe County Sheriff's Office – (505) 986-2455

SFC Adult Correctional Facility – (505) 428-3861



# Integrity.

Join Santa Fe County Public Safety  
and Discover Your Inner Hero.

Sheriff | Fire | EMT/Medic  
911 Dispatch | Corrections

**505-992-9880**

**[www.SantaFeCountyNM.gov/Hero](http://www.SantaFeCountyNM.gov/Hero)**

