



Age by Sex Profile

Santa Fe County, NM 3
 Santa Fe County, NM (35049)
 Geography: County

Summary	Census 2010	2013	2018	2013-2018 Change	2013-2018 Annual Rate
Population	144,170	145,947	150,588	4,641	0.63%
Households	61,963	63,075	65,723	2,648	0.83%
Average Household Size	2.28	2.27	2.25	-0.02	-0.18%
Median Age	43.0	43.8	44.8	1.0	0.45%
Median Male Age	41.4	42.2	43.1	0.9	0.42%
Median Female Age	44.6	45.4	46.4	1.0	0.44%

Total Population by Age	Census 2010		2013		2018	
	Number	Percent	Number	Percent	Number	Percent
Total	144,170	100.0%	145,947	100.0%	150,588	100.0%
0 - 4	8,217	5.7%	8,000	5.5%	8,243	5.5%
5 - 9	8,275	5.7%	8,244	5.6%	8,229	5.5%
10 - 14	8,531	5.9%	8,395	5.8%	8,560	5.7%
15 - 19	8,387	5.8%	8,122	5.6%	8,001	5.3%
20 - 24	7,526	5.2%	8,167	5.6%	7,841	5.2%
25 - 29	8,059	5.6%	8,091	5.5%	8,888	5.9%
30 - 34	8,569	5.9%	8,422	5.8%	8,482	5.6%
35 - 39	8,838	6.1%	8,417	5.8%	8,715	5.8%
40 - 44	9,358	6.5%	9,295	6.4%	8,712	5.8%
45 - 49	10,727	7.4%	9,753	6.7%	9,419	6.3%
50 - 54	11,624	8.1%	11,324	7.8%	10,119	6.7%
55 - 59	12,401	8.6%	12,375	8.5%	12,158	8.1%
60 - 64	11,854	8.2%	12,405	8.5%	12,532	8.3%
65 - 69	8,088	5.6%	9,621	6.6%	11,444	7.6%
70 - 74	5,297	3.7%	6,213	4.3%	8,304	5.5%
75 - 79	3,648	2.5%	4,022	2.8%	5,166	3.4%
80 - 84	2,519	1.7%	2,639	1.8%	3,037	2.0%
85+	2,252	1.6%	2,442	1.7%	2,738	1.8%
18+	113,934	79.0%	116,397	79.8%	120,686	80.1%
21+	109,206	75.7%	111,488	76.4%	115,926	77.0%

Data Note: Detail may not sum to totals due to rounding.

Source: U.S. Census Bureau, Census 2010 Summary File 1. Esri forecasts for 2013 and 2018.



Age by Sex Profile

Santa Fe County, NM 3
 Santa Fe County, NM (35049)
 Geography: County

Male Population by Age	Census 2010		2013		2018	
	Number	Percent	Number	Percent	Number	Percent
Total	70,257	100.0%	71,178	100.0%	73,572	100.0%
0 - 4	4,114	5.9%	4,012	5.6%	4,149	5.6%
5 - 9	4,109	5.8%	4,109	5.8%	4,115	5.6%
10 - 14	4,338	6.2%	4,203	5.9%	4,279	5.8%
15 - 19	4,250	6.0%	4,157	5.8%	4,044	5.5%
20 - 24	3,980	5.7%	4,233	5.9%	4,071	5.5%
25 - 29	4,188	6.0%	4,253	6.0%	4,577	6.2%
30 - 34	4,361	6.2%	4,322	6.1%	4,422	6.0%
35 - 39	4,491	6.4%	4,264	6.0%	4,450	6.0%
40 - 44	4,616	6.6%	4,633	6.5%	4,350	5.9%
45 - 49	5,239	7.5%	4,761	6.7%	4,644	6.3%
50 - 54	5,466	7.8%	5,434	7.6%	4,894	6.7%
55 - 59	5,779	8.2%	5,789	8.1%	5,808	7.9%
60 - 64	5,564	7.9%	5,754	8.1%	5,830	7.9%
65 - 69	3,762	5.4%	4,499	6.3%	5,325	7.2%
70 - 74	2,477	3.5%	2,891	4.1%	3,893	5.3%
75 - 79	1,689	2.4%	1,844	2.6%	2,358	3.2%
80 - 84	1,079	1.5%	1,177	1.7%	1,359	1.8%
85+	755	1.1%	843	1.2%	1,004	1.4%
18+	55,040	78.3%	56,350	79.2%	58,582	79.6%

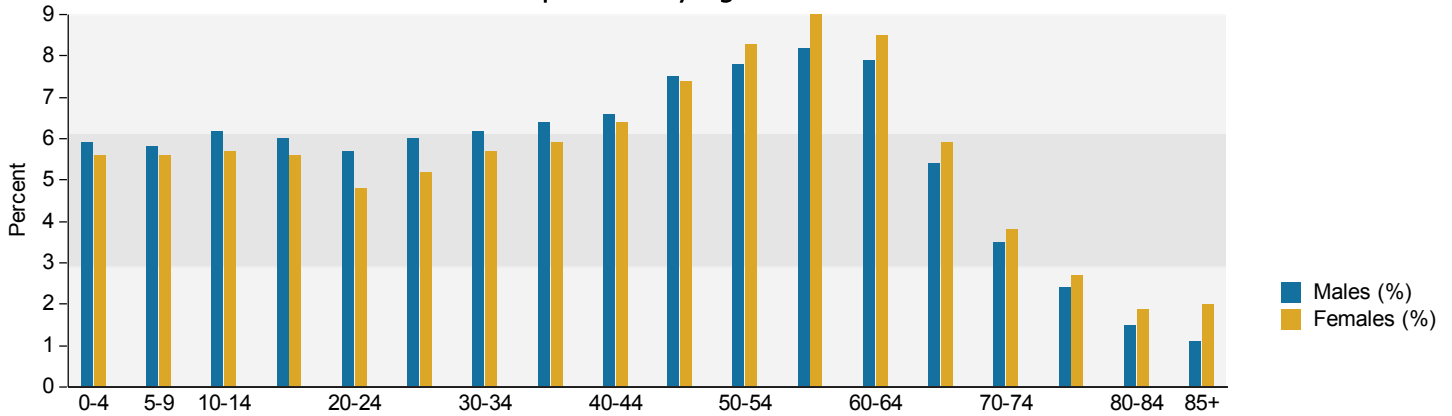
Female Population by Age	Census 2010		2013		2018	
	Number	Percent	Number	Percent	Number	Percent
Total	73,913	100.0%	74,769	100.0%	77,016	100.0%
0 - 4	4,103	5.6%	3,988	5.3%	4,094	5.3%
5 - 9	4,166	5.6%	4,135	5.5%	4,114	5.3%
10 - 14	4,193	5.7%	4,192	5.6%	4,281	5.6%
15 - 19	4,137	5.6%	3,965	5.3%	3,957	5.1%
20 - 24	3,546	4.8%	3,934	5.3%	3,770	4.9%
25 - 29	3,871	5.2%	3,838	5.1%	4,311	5.6%
30 - 34	4,208	5.7%	4,100	5.5%	4,060	5.3%
35 - 39	4,347	5.9%	4,153	5.6%	4,265	5.5%
40 - 44	4,742	6.4%	4,662	6.2%	4,362	5.7%
45 - 49	5,488	7.4%	4,992	6.7%	4,775	6.2%
50 - 54	6,158	8.3%	5,890	7.9%	5,225	6.8%
55 - 59	6,622	9.0%	6,586	8.8%	6,350	8.2%
60 - 64	6,290	8.5%	6,651	8.9%	6,702	8.7%
65 - 69	4,326	5.9%	5,122	6.9%	6,119	7.9%
70 - 74	2,820	3.8%	3,322	4.4%	4,411	5.7%
75 - 79	1,959	2.7%	2,178	2.9%	2,808	3.6%
80 - 84	1,440	1.9%	1,462	2.0%	1,678	2.2%
85+	1,497	2.0%	1,599	2.1%	1,734	2.3%
18+	58,894	79.7%	60,047	80.3%	62,104	80.6%

Source: U.S. Census Bureau, Census 2010 Summary File 1. Esri forecasts for 2013 and 2018.

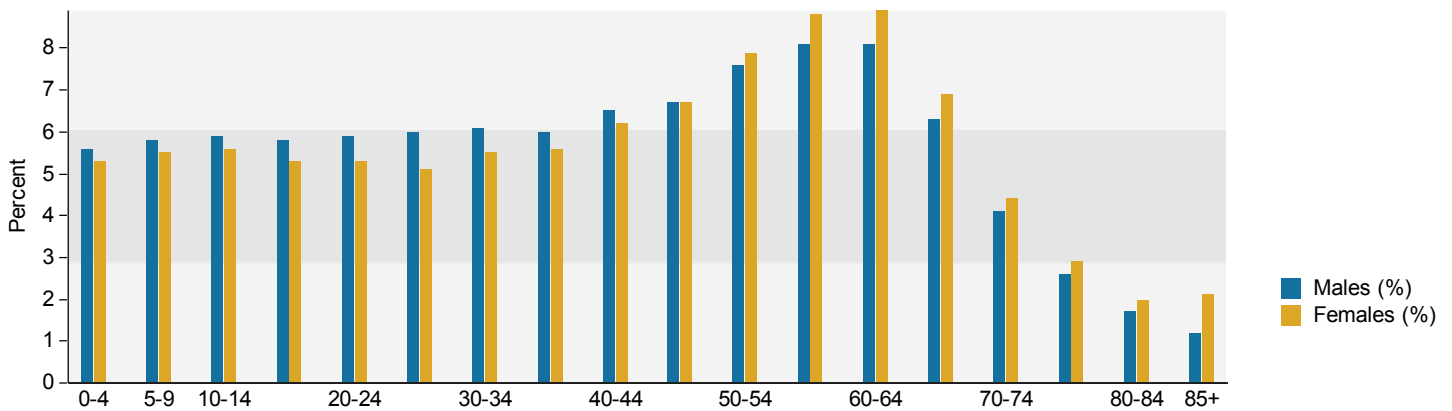
Age by Sex Profile

Santa Fe County, NM 3
 Santa Fe County, NM (35049)
 Geography: County

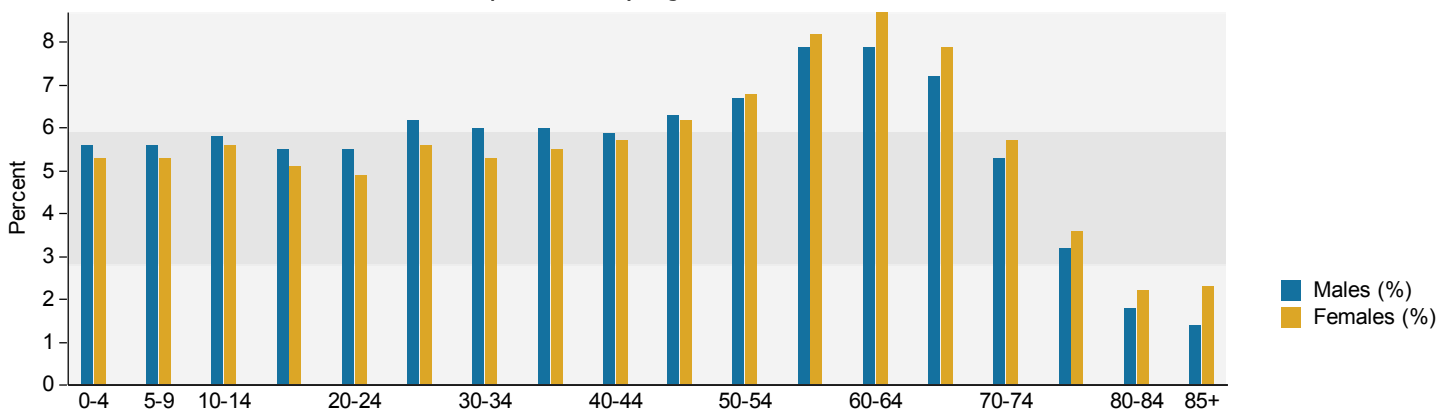
Census 2010 Population by Age and Sex



2013 Population by Age and Sex



2018 Population by Age and Sex



Source: U.S. Census Bureau, Census 2010 Summary File 1. Esri forecasts for 2013 and 2018.