



**Santa Fe County**  
**Community Services Department**  
2015

2052 Galisteo Street  
Santa Fe, New Mexico 87505  
(505) 992-9849



## QUICK LIST OF SANTA FE PROVIDERS

CareNet Pregnancy Center.....	995-1998
Catholic Charities.....	424-9789
Child Support Enforcement.....	1-800-288-7207
Children First Co-Parenting Support Services.....	473-7630
Children's Medical Services.....	476-2603
Christus Arroyo Chamiso Pediatric Clinic.....	995-4901
Christus Camino Entrada Pediatrics.....	946-3233
Christus St. Vincent Regional Medical Center.....	983-3361
Community Infant Program of Las Cumbres Community Services.....	955-0410
Early Head Start/Head Start.....	982-4484
Esperanza Shelter for Battered Families, Inc.....	473-5200
Family Court Services.....	455-8231
First Born-United Way of Santa Fe.....	982-2002
Food Stamps (SNAP: Supplemental Nutrition Assistance Program).....	827-1932
Gerard's House.....	424-1800
Healthy Tomorrows Van.....	467-1575
Interfaith Community Shelter.....	495-7494
La Familia Medical Center.....	982-5460
Life Link.....	438-0010
Many Mothers.....	466-3715
Mobile Health Van.....	992-9849
Molina Medical.....	490-4042
New Mexico Center for Dispute Resolution.....	247-0571
New Mexico Midwives Association.....	www.newmexicomidwifery.org
New Vistas.....	988-3803
Ortiz Mountain Health Center.....	471-6266
Pastoral Counseling Center.....	988-4131
Planned Parenthood Santa Fe Health Center.....	982-3684
Public Health Office (NM Dept. of Health).....	476-2600
Santa Fe Community Guidance Center.....	986-9633
Santa Fe County Health Care Assistance Program.....	992-9849
Santa Fe County Mobile Health Van.....	992-9849
Santa Fe Indian Health Services.....	988-9821
Sky Center.....	473-6191
Solace Crisis Treatment Center.....	988-1951
Southwest CARE Center-Family Medicine.....	954-1921
Southwest CARE Center-Women's Health Services.....	988-8869
Southwest CARE Center-Specialty Care Services.....	989-8200
Southwest College Counseling Center.....	471-8575
St. Elizabeth's Emergency Shelter.....	982-6611
St. Elizabeth's CASA FAMILIA Family Shelter.....	983-2042
Su Vida.....	986-9633
Temporary Assistance for Needy Families (TANF).....	927-1932
Teen Health Center (Capital).....	467-1081
Teen Health Center (SFHS).....	467-2439
Teen Parent Center (SFHS).....	467-2827
Villa Therese Catholic Clinic.....	983-8561
WIC.....	476-2602
Young Fathers of Santa Fe.....	505-699-7431 or 505-919-8109
Youth Shelters.....	983-0586

## EMERGENCY NUMBERS

Police/Fire Department.....	911
New Mexico Poison Center.....	1-800-222-1222
Crisis Response Hotline.....	820-6333 or 1-888-920-6333
NM Crisis and Access Line.....	1-855-662-7474
Christus St. Vincent Hospital.....	983-3361
Christus Hospital Lactation Consultant.....	820-5291
Women's Services (ask for lactation consultant)	
Esperanza Shelter for Battered Families, Inc.....	1-800-473-5220 or 473-5200
To report child abuse/neglect.....	#7233 or 1-855-333-SAFE(7233)
Drunkbusters Hotline.....	#394 or 1-877-394-4258
Solace Crisis Treatment Center.....	988-1951 or 1-800-721-7273
Nurse Advice Hotline.....	1-877-725-2552

Your Baby's Doctor \_\_\_\_\_  
Name Phone Number

Family Doctor \_\_\_\_\_  
Name Phone Number

*For more information about enrollment in health insurance, the Santa Fe County Mobile Health Van, or the Santa Fe County Health Care Assistance Program, call the Santa Fe County Community Services Department at 992-9849.*

## Support Services

Alcohol & Drug Helpline Crisis Hotline.....	1-800-454-8966
Bethel Community Storehouse.....	832-6642
Thrift store, food bank, assistance with food/shelter	
Catholic Charities.....	832-6655
Child Care Assistance Program.....	841-4800
Child Protective Services.....	384-2745
Child Support Enforcement Division.....	1-800-288-7207
Christian Counseling Centers of New Mexico.....	1-888-711-1231
Domestic Violence Program.....	832-6567
Domestic Violence Program Statewide (24-hr shelter services).....	1-800-799-7233
DWI Resource Center.....	881-1084
Esperanza Shelter for Battered Families Inc.....	1-800-473-5220
Hogares Inc.....	832-9322
Human Services/ISD Office.....	832-5026
Legal Aide Hotline (ABQ).....	243-4300
Legal Aide Hotline (Statewide).....	1-877-974-3400
Moriarty Church of the Nazarene-food pantry.....	832-4390
Mothers Against Drunk Driving.....	1-800-522-6233
National Domestic Violence Hotline.....	1-800-799-7233
Rape Crisis.....	266-7711
Rapid Detox.....	1-800-996-3784
Social Security Office.....	1-800-772-1213
Suicide Intervention.....	247-1121
Sunrise Counseling Services.....	891-1001
Talking Talons Thrift Store.....	286-9611
Torrance County Counseling.....	832-9135
Valencia Counseling.....	384-0220
WIC.....	263-4584
Youth Shelters.....	1-877-983-0586

## Education/Employment

Carrington College, Albuquerque Campus.....	1-877-206-2106
Central NM University.....	1-888-453-1304
ITT (Albuquerque).....	828-1114
NM Workforce Torrance County.....	832-6774
PIMA (Albuquerque).....	1-800-477-7462
University of New Mexico.....	277-0111

**Services listed in this Resource Directory, to the best of our knowledge, are limited to agencies that have a non-profit status or accept Medicaid. Inclusion in this directory is not an endorsement. Clients are urged to formulate their individual criteria for selection of service providers.**

## You need health insurance.

Here is how to find health insurance that meets your needs and fits your budget.

### Medicaid, also known as Centennial Care.

Centennial Care is the name of the New Mexico Medicaid program.

Even if you have not been eligible for free health care under Medicaid in the past, you may be eligible now under the higher income guidelines. To apply, call the Medicaid Expansion hotline at 1-855-637-6574 or apply on-line at [www.yes.state.nm.us](http://www.yes.state.nm.us). You can also enroll in person at the Income Support Division office, 39B Plaza La Prensa, Santa Fe, NM 87504, Telephone: (505) 476-9200.

### New Mexico Health Insurance Exchange, also known as BeWellNM.

This health coverage can be very low cost. You may apply for coverage, compare plans, and enroll online at [www.bewellnm.com](http://www.bewellnm.com)

or by calling 1-855-996-6449

### These Santa Fe County providers can help you with enrollment:

La Familia (Alto Street)	1035 Alto Street, Santa Fe	982-4425
La Familia (Southside)	2145 Caja del Oro Grant Road, Santa Fe	438-3195
La Familia (Dental)	6401 Richards Avenue, Santa Fe	984-5048
Health Care for the Homeless	818 Camino Sierra Vista, Santa Fe	988-1742
First Choice Community Healthcare	8 Medical Center Road, Edgewood	281-3406
PMS Ortiz Mountain Health Center	6 B Main Street, Cerrillos	471-6266
PMS Santa Fe Community Guidance	2960 Rodeo Park Drive W, Santa Fe	986-9633
Las Clinicas del Norte/School Health	1574 State Road 502, Pojoaque	455-4026
CHRISTUS St. Vincent	Santa Fe	913-5220
Santa Fe County Community Services Department	2052 Galisteo Street, Santa Fe	992-9849
Southwest Care Center/Women's Health	901 West Alameda, Santa Fe	988-8869

## Table of Contents

<b>Emergency Numbers</b> .....	i
<b>Health Insurance Information</b> .....	ii
<b>Caring for your Baby</b> .....	1
Nutrition...Breastfeeding, Infant Feeding Assistance .....	1
Baby's Growth & Development .....	1
Infant & Toddler Health Care .....	1
Car Seats .....	2
Children's Books & Toys .....	2
<b>Education, Information &amp; Support</b> .....	2
Birth Certificates .....	2
Child Care Resources & Referral .....	2
Classes & Support Groups .....	3
Family Activities & Museums .....	3
Health Concerns.....	3-4
Pregnancy Testing & Family Planning.....	3
Prenatal Care.....	3
Santa Fe County Mobile Health Van .....	4
Other Family and Dental Services.....	4
Home Visiting Services.....	4
Resources & Information .....	5
Parenting Publication.....	5
Teen Parenting Services .....	5
<b>When You Need Extra Help</b> .....	6
Counseling Services .....	6-7
General Support .....	6
Conflict & Dispute Resolution.....	6
Suicide .....	6
Alcohol & Drug Abuse Counseling .....	7
Education.....GED Programs, High School Diploma .....	7
Transportation .....	7
Employment Services.....	7
Health, Financial, & Other Assistance.....	8-10
Medicaid Enrollment Sites.....	8
Santa Fe County Healthcare Assistance Program.....	8
Other Financial Assistance for Medical Expenses .....	8
Transportation for Doctor Appointments.....	9
Assistance with Bills & Rent.....	9
Child Care Financial Assistance.....	9
Food Assistance .....	9
College Education.....	10
Literacy Programs & Other Resources .....	10
Furniture & Clothing.....	10
Shelters .....	10
Housing for 18 & Older.....	11
<b>Phone Lines</b> .....	11
<b>Hotlines</b> .....	11
<b>Northern Santa Fe County (Española Area)</b> .....	12
<b>Southern Santa Fe County (Edgewood Area)</b> .....	13-14
<b>Quick List of Santa Fe Providers</b> .....	15

Rock Christian Fellowship.....	753-2094
St. Vincent de Paul.....	753-4225

### **Counseling & Substance Abuse Programs**

Amistad de Nuevo Mexico.....	753-0134
Family services, youth groups resource referrals, crisis intervention, relapse prevention, group therapy, individual counseling, detoxification & limited residential home for substance abuse.	
Casa de Corazon .....	1-888-732-6396 or 747-1991
Provides outpatient counseling & day treatment program.	
Crisis Center of Northern New Mexico.....	753-1656
Domestic violence, sexual assault, counseling, 24-hour crisis hotline, safe shelter.	
Hoy Recovery Program Outpatient and DWI School.....	753-2094
Rock Christian Outreach .....	753-2094
Provides a Christian spiritual approach to drug & alcohol and residential men's home, provides counseling & family support.	
Valley Community Health Center .....	747-7400
A branch Fe Community Guidance Center-Su Vida	

### **Education**

Northern New Mexico College.....	747-2100
GED Program.	

## **SOUTHERN SANTA FE COUNTY (EDGEWOOD AREA)**

### **Emergency Numbers**

Moriarty Police Dept.....	832-6060
State Police (Edgewood).....	281-0096
State Police (Moriarty).....	281-1060
Torrance County Dispatch.....	384-2706
Torrance County Sheriff's Dept. ....	246-4773

### **Child Health and Development**

Alta Mira Program.....	384-0894
Early intervention program.	
Dr. Stephen Cito.....	298-5522
Dr. Sherry Garnard .....	281-4620
Edgewood Pediatric Clinic.....	281-4620
Esperanza Family Health.....	384-2777
Medical and Dental.	
First Choice (Mountain & Valley Regional Health Center.).....	281-3406
Bilingual, accepts Medicaid, has dentist on-site, WIC site.	
Hogares Inc.....	832-9322
Just 4 Kids Dentistry.....	839-3703
McLeod Medical Center (Edgewood).....	286-2396
McLeod Medical Center (Moriarty).....	832-4434
PMS Moriarty Early Head Start-Center Based.....	832-9369
PMS Moriarty Early Head Start—Home Based.....	832-1922
Serves pregnant women & 0-3 yrs, Serves southern Santa Fe County—Edgewood	
PMS Moriarty Head Start Programs (PMS).....	832-2588
Moriarty Health Office.....	832-6782
Moriarty Library.....	832-2513
Pediatric Associates.....	265-7817
Rainbow Dental.....	890-6101
Small Smiles of Albuquerque.....	352-3808

PRENATAL CARE HOTLINE.....	1-800-311-BABY(2229)
POISON CONTROL .....	1-800-222-1222
POSTPARTUM SUPPORT INTERNATIONAL.....	1-800-944-4773
RAPE CRISIS HOTLINE.....	986-9111 or 1-800-721-7273
SPANISH LANGUAGE SUICIDE HOTLINE.....	1-800-784-2432
TOBACCO QUITLINE.....	1-800-784-8669

## NORTHERN SANTA FE COUNTY (ESPAÑOLA AREA)

### Family Health Care

Children's Medical Services.....	753-3142 & 753-5969
Diagnosis, prevention & treatment of developmental & physical disabilities 0 to 21 years old. Developmental evaluations up to age 3.	
Rio Arriba County Public Health Office .....	753-2794
Immunizations, family planning, pregnancy testing & HIV testing.	
El Centro Family Health Clinic.....	753-7395
Carlos F. Vigil Middle School Health Clinic.....	505-929-1636
Espanola Valley High School Health Clinic.....	505-929-1636
Espanola Hospital (Presbyterian Espanola Hospital).....	753-7111
Las Clinicas Del Norte.....	1-800-869-7624
Abiquiu Clinic.....	1-866-578-1662/505-685-4479
El Rito Clinic.....	1-800-869-7624/575-581-4728
Las Cumbres Community Services.....	753-4123
Wide range of programs for children & adults with developmental disabilities. Developmental screening & services for ages 0 to 3. Services for drug exposed babies & children with mental health concerns.	
Parents Reaching Out Services for families with unique needs.....	1-800-524-5176
Pojoaque Family Practice .....	455-2842
Pojoaque Primary Care.....	455-1962
Presbyterian Medical Group.....	367-0340
Rio Arriba Health and Human Services.....	753-3143
Car seats for income eligible participants	
Wellness Clinical Services .....	753-5811
WIC (Women, Infants & Children) .....	753-4659
Nutritional counseling, education & food vouchers for pregnant women and children.	
<b>Parenting Resources</b>	
Car Seat Distribution Program .....	505-332-7707
Car seats for Medicaid eligible guardians of children.	
Children, Youth & Families Dept., Protective Services.....	753-7191
Homemaker services, provides funding for critical in-home crisis intervention, refers families for treatment.	
Espanola Head Start.....	747-1456
Espanola Housing Authority.....	753-7870
Two programs help provide low-income families with housing.	
Espanola Valley Ministerial Alliance .....	753-4225
After screening process by police, eligible transients can receive gas, food, short bus trip tickets & canned food for local emergencies.	
Family Learning Center .....	753-2739
Preschool all-day day-care (3 to 5 years old). Before and after school program (0-3).	
Human Services Department.....	753-2271
Welfare, money for day care & transportation, career counseling for those on AFDC or food stamps.	
<b>Other Assistance</b>	
H.E.L.P .....	753-7181
Clothing, food vouchers, lodging, rent, homeless program & help with babysitting.	



## CARING FOR YOUR BABY

### NUTRITION

#### BREASTFEEDING

Children's Medical Services (accepts Medicaid).....	476-2603
For children with special needs—ask for Nutritionist.	
Christus St. Vincent Hospital Lactation Consultant.....	820-5913
Christus St. Vincent main number—ask hospital operator for breastfeeding support .....	983-3361
La Familia Medical Center.....	982-5460
Breastfeeding Promotora, breastfeeding supplies and home visits. Ask for breastfeeding support. Pump sales & rentals available. Also serves WIC clients. (accepts Medicaid)	
La Leche League .....	466-2738
NATIONAL BREASTFEEDING HELPLINE.....	1-800-994-9662
Public Health Office (accepts Medicaid).....	476-2600
<a href="#">United Way of Santa Fe County 1st Born &amp; Post Partum</a>	
<a href="#">WIC-Women, Infants and Children</a> .....	476-2602
Breastfeeding Promotion Coordinator/Support Network	
<b>INFANT FEEDING ASSISTANCE</b>	
Villa Therese Catholic Clinic.....	983-8561
WIC-Women, Infant and Children.....	476-2602

### BABY'S GROWTH AND DEVELOPMENT

Challenge New Mexico.....	988-7621
Physically/mentally disabled children's support services. (accepts Medicaid)	
Children's Medical Services .....	476-2603
Eligibility limited to New Mexico residents under 21. Services for prevention, diagnosis & treatment of disabling conditions. (accepts Medicaid)	
Community Infant Program of Las Cumbres Community Services.....	955-0410
Counseling, emotional support, parenting & developmental guidance (prenatal to 3)	
New Vistas .....	988-3803
Bilingual services & home visits for children ages 0-3 at risk for developmental delays and special needs. (accepts Medicaid)	
Early Education Program (New Mexico School for the Deaf).....	476-6418
Services & home visits for families with deaf or hard-of-hearing children ages 0-6. (accepts Medicaid)	

### INFANT & TODDLER HEALTH CARE

Children's Medical Services.....	476-2603
Eligibility limited to New Mexico residents under 21. (accepts Medicaid)	
Christus St. Vincent Arroyo Chamiso Medical Clinic .....	913-4901
Christus Camino Entrada Pediatrics (accepts Medicaid).....	946-3233
Community Infant Program of Las Cumbres Community Services (accepts Medicaid).....	955-0410
Corazon Family Health Center (accepts Medicaid) .....	629-4400
La Familia Medical Center (accepts Medicaid).....	982-5460

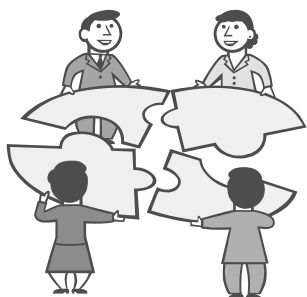
Molina Medical (accepts Medicaid)	490-4042
Provides primary family care to all ages	
Ortiz Mountain Health Center (accepts Medicaid)	471-6266
PMS-Community Guidance Center (accepts Medicaid)	986-9633
Rio Luna Family Care	988-1930
Santa Fe Family Health Center (accepts Medicaid)	474-0120
Santa Fe Indian Health Services	988-9821
Text4baby (free text messages on baby's development)	Text BABY to 51141
Villa Therese Catholic Clinic	983-8561
Eye exams, well and sick baby exams and limited medications	
Southwest CARE Center-Family Medicine	954-1921
Southwest CARE Center-Women's Health Services (accepts Medicaid)	988-8869

### CAR SEATS

Christus St. Vincent Hospital	983-3361
Low-income parents of newborns may ask discharge planner for car seat assistance.	
La Familia Medical Center	982-5460
Safer New Mexico-Car Seat Inspection	471-3965

### CHILDREN'S BOOKS AND TOYS

Santa Fe Public Library Main Branch	955-6780
La Farge Branch (babies & preschool program — call for times)	955-4863
Southside Branch (babies & preschool program — call for times)	955-2828
Kid's Campus, Santa Fe Community College (7:30 to 5:30 Mon-Fri)	428-1380



## EDUCATION, INFORMATION AND SUPPORT

### BIRTH CERTIFICATES

Vital Records.....Parents need picture ID & \$10.00....827-0121

### CHILD CARE RESOURCE AND REFERRAL

Parents should personally screen childcare providers. For childcare financial assistance, see **WHEN YOU NEED EXTRA HELP**.

Choices for Families (Home childcare providers)	424-8697
CYFD Childcare Assistance Program	827-7499
Call for appointments except on Tuesdays.	
Santa Fe Children's Services	982-4484
Early Head Start (pregnancy - age 3) and Head Start (ages 3-5 ) Income eligibility requirements.	
NATIONAL CHILD CARE INFORMATION	1-800-616-2242
Santa Fe Community College/Division of Early Childhood	428-1354
Registry of licensed/registered childcare providers	428-1344

### HOUSING FOR 18 AND OVER

Bluffs at Tierra Contenta	471-3100
City of SF Housing and Community Development	955-6346
Civic Housing Authority	992-3060
Country Club Apartments	471-1871
County Housing Authority	992-3060
Evergreen Apartments	474-9260
Landlord-Tenant Hotline	983-8447
Las Palomas Apartments	984-8887
Life Link. Family Services for deposit and first month's rent	438-0010
Paseo del Sol Apartments	473-5980
Sangre de Cristo Apartments	984-1856
San Ignacio Apartments	474-6400
Santa Fe Apartments	983-2260
St. Elizabeth's Casa Familia: Urgent transitional center	983-2042
St. Elizabeth's Sonrisa: 2 year Family Transitional Living	424-6973
Tuscany St. Francis	983-6666
Village Sage Apartments	474-4226
Vista Linda Apartments	424-7590

### PHONE LINES

CENTER FOR DEVELOPMENTAL DISABILITIES.....1-800-552-8195  
Monday-Friday 9:00-5:00

For any person with a child or serving young children with or at risk for developmental disabilities & their families. Extensive clearing house functions. Medical librarian provides information & resources on pediatric illness & child development.

FAMILY RESOURCE LIBRARY.....1-505-272-2671

PARENTS REACHING OUT ..... 1-800-524-5176

Monday-Friday 9:00-5:00

Serves families of those with special needs. Information, referral, support, connection with other families, local resources & mailing of library materials.

SAFER NEW MEXICO ..... 471-3965 or 1-800-231-6145

Monday-Friday 9:00-5:00

Serves families & those serving kids to age 14, regarding information on prevention of unintentional injury.

SANTA FE COMMUNITY COLLEGE.....428-1354

Monday-Friday 8:00—5:00

Information & referral on childcare, & child development & behavior.

SOUTHWEST AUTISM NETWORK .....1-800-270-1861

Resource and referral service for people and children with autism.

### HOTLINES

CDC INFORMATION LINE	1-800-232-4636
CRISIS RESPONSE HOTLINE	820-6333 or 1-888-920-6333
NM CRISIS AND ACCESS LINE	1-855-662-7474
DOMESTIC VIOLENCE HOTLINE	1-800-473-5220 or 473-5200
NATIONAL HUNGER HOTLINE	1-888-548-6479
NATIONAL DOMESTIC VIOLENCE HOTLINE	1-800-799-7233
NATIONAL RUNAWAY SAFELINE	1-800-621-4000
NATIONAL TEEN DATING ABUSE HOTLINE	1-866-331-9474
NM SUICIDE PREVENTION HOTLINE	1-866-435-7166

St. Vincent De Paul-1088 Early Street.....	989-8328
Helps with food Wednesday 10-12.	
Salvation Army 525 West Alameda Street.....	988-5715
Free breakfast 8:00am, Dinner 5:00pm, M-F	
Santa Fe Community Services-Inner Faith's Shelter .....	310-3624
Old Pete's Pets Building on Cerrillos Road	
Serves lunch Saturdays at 12pm. Offers counseling, case mgt, needle exchange, food, clothing Monday-Friday 9-4.	
Sojourner's Advocacy Café 1424 Fourth Street.....	983-4182
Food boxes on Tuesdays for Life Link clients 11-2. General public welcome after 2 if boxes are available.	
The Light at Mission Viejo .....	982-2080
Periodic assistance with groceries.	
WIC-Women, Infants and Children .....	476-2602
Vouchers for groceries and the farmers market.	
Youth Shelters Street Outreach 402 St. Francis Drive.....	988-2652
Food For homeless and runaway youth under 21.	

## College Education

Santa Fe Community College-Child Care Information .....	428-1354
Santa Fe Community College (Continuing Ed.) .....	428-1676
Santa Fe Community College-Student Services & Financial Aid.....	428-1268
University of New Mexico-Santa Fe Graduate Center.....	428-1234

## Literacy Programs & Other Resources

Literacy Volunteers of Santa Fe.....	428-1353
Guadalupe Credit Union Free credit classes.....	982-8942
Santa Fe Public Library.....	955-6780

## Furniture and Clothing

Community Thrift Store Monday thru Saturday 10 am to 5 pm.....	473-0972
Goodwill Mon-Fri 9am-7pm, Sat 9am-8pm, Sun 10am-4pm .....	424-9726
Hospice Center Thrift Shop Mon-Fri 10am-5pm, Sat 10am-4pm.....	995-9901
St. Vincent de Paul Thrift Shop Mon-Fri 10am-4:30pm .....	989-8328
Salvation Army Mon-Sat 9am-5pm Apply for vouchers at Alameda Office.....	473-7735

## Shelters

Esperanza Shelter for Battered Families .....	473-5200
Interfaith Community Shelter 2801 Cerrillos Road.....	795-7494
Open November—April at 6:00pm	
La Luz Family Services 2325 Cerrillos Road.....	438-0010
Transitional living for mentally ill homeless.	
St. Elizabeth's CASA FAMILIA 1604 Berry Street.....	983-2042
Year round shelter for women, children and families. Opens at 3:30pm	
St. Elizabeth's Men's Emergency Shelter 804 Alarid Street.....	982-6611
Emergency housing for homeless men (18 and older.)	
St. Elizabeth's Casa Cerrillos: Permanent Supportive Housing for people with Disabilities 3811 1/2 Cerrillos Road (behind Country Dan's).....	471-3456
Youth Shelters (ages 10-17) Emergency Shelter-5686A Agua Fria.....	438-0502
Transitional living-4435 Airport Road.....	
Street Outreach-402 St. Francis.....	988-2652

SER: Santa Fe Jobs for Progress.....	473-0428
On-site childcare for Academy/GED students.	
Teen Parents (Santa Fe High School-Busy Bees Early Head Start).....	467-2865
On site child care (6 wks—3 years) for high school students & income eligible families	
Teen Parents (Capital High School-Little Paws Early Head Start).....	467-1153
On site child care (6 wks—3 years) for high school students & income eligible families	

## CLASSES AND SUPPORT GROUPS

Children's First Co-Parenting Support Services.....	473-7630
For parents struggling with co-parenting conflicts; provide safe, neutral child transfer sites.	
Christus St. Vincent Doula Services Post-partum and lactation assistance.....	820-5793
Christus St. Vincent Hospital Prenatal Classes .....	820-5793
La Familia Medical Center.....	982-5460
Many Mothers Vital support for families with newborns .....	466-3715
Teen Parent Center (Santa Fe High School).....	467-2827
Rio Luna Family Care (Clients Only) Group Prenatal Classes.....	988-1930
United Way of Santa Fe County Free classes on a variety of topics.....	982-2002
Young Father's of Santa Fe .....	505-699-7431 or 505-919-8109

## FAMILY ACTIVITIES and MUSEUMS

Randall Davey Audubon Society .....	983-4609
Santa Fe Boys and Girls Club.....	983-6632
Santa Fe Children's Museum.....	989-8359
Santa Fe Public Library .....	955-6780
Warehouse 21 Santa Fe Teen Arts Center .....	989-4423
Museum of Art (Sunday free for NM residents) .....	476-5041
History Museum and Palace of the Governors (Sunday free for NM residents).....	476-5200
Museum of Spanish Colonial Art (Sunday free for NM residents) .....	982-2226
Museum of Indian Arts and Culture (Sunday free for NM residents).....	476-1250
Museum of International Folk Art (Sunday free for NM residents).....	476-1200
Wheelwright Museum of the American Indian (Sunday free for NM residents).....	982-2226

## HEALTH CONCERNS

### Pregnancy Testing and Family Planning

CareNet Pregnancy Center.....	995-1998
Christus St. Vincent Doula Services.....	820-5793
La Familia Medical Center (accepts Medicaid).....	982-5460
New Mexico Midwives Association .....	www.newmexicomidwifery.org
Planned Parenthood Santa Fe Health Care Center.....	982-3684
PMS Healthy Tomorrows Mobile Health Care Van .....	467-1575
Public Health Office (NM Dept. of Health) (accepts Medicaid).....	476-2600
Santa Fe Indian Health Services .....	988-9821
Teen Health Centers (Confidential care) (accepts Medicaid)	
Capital High School .....	467-1081
Santa Fe High School .....	467-2439
Southwest CARE Center/Women's Health Services.....	988-8869
(Clients only) (accepts Medicaid)	

### Prenatal Care

La Familia Medical Center (accepts Medicaid).....	982-5460
---	----------

New Mexico Midwives Association .....	www.newmexicomidwifery.org
Ortiz Mountain Health Center (accepts Medicaid).....	471-6266
Perinatal Associates of New Mexico.....	984-2560
Rio Luna Family Care.....	988-1930
Santa Fe Indian Health Services .....	988-9821
Southwest CARE Center/Women's Health Services (accepts Medicaid).....	988-8869

## Santa Fe County Mobile Health Van

The Santa Fe County Mobile Health Van, part of the County's Community Services Department, travels throughout the County and provides health screenings at no charge. These free services include blood pressure screening, blood glucose and cholesterol monitoring, and oxygen assessment. Nurses also provide health information and refer people to health care providers and to places for help in enrolling in health insurance. In the fall, free flu shots are offered on the Van. For the schedule, call 992-9849 or check the County website at [www.santafecountynm.gov](http://www.santafecountynm.gov).

## Other Family and Dental Services

Big Brothers/Big Sisters.....	983-8360
Children's First Co-Parenting Support Services.....	473-7630
Teaching parents who are struggling with co-parenting conflicts; provide safe, neutral child transfer sites.	
Divine Dental (accepts Medicaid).....	471-7000
La Familia Dental Clinic (Santa Fe Community College) (accepts Medicaid).....	474-1438
La Familia Health Care for the Homeless 818 Camino Sierra Vista .....	988-1742
Many Mothers Vital Support for families with newborns .....	466-3715
Northside Dental Clinic Free Consultation. Low cost dental care .....	820-3551
PMS Healthy Tomorrows Mobile Health Van Adults and children over 3 .....	467-1575
Project ANN.....	955-1209
Dental and Vision referrals for families who can't pay.	
Public Health Office (NM Dept. of Health).....	476-2600
Free and anonymous STD and AIDS testing and treatment. (accepts Medicaid)	
Santa Fe Indian Health Services .....	988-9821
Small Smiles of Santa Fe .....	474-4993
Dental services for Medicaid eligible children.	
Southwest CARE Center-Specialty Services.....	989-8200
Free anonymous needle less AIDS testing by appointment. (accepts Medicaid)	
Teen Health Center (Santa Fe High School) (accepts Medicaid).....	467-2439
Teen Health Center (Capital High School) (accepts Medicaid).....	467-1081
Free & confidential STD & AIDS testing & treatment. Limited screening and referral service.	
Villa Therese Catholic Clinic .....	983-8561
Eye exams, tooth extractions, well & sick baby examinations & limited medications.	

## HOME VISITING SERVICES (BILINGUAL AVAILABLE)

Children's Medical Services.....	476-2603
Social Work Coordination for newborn to 3 years of age.	
Community Infant Program of Las Cumbres Community Services.....	955-0410
Prenatal 0 to 3. Home Visiting center-based and groups. (accepts Medicaid)	
Early Head Start .....	982-4484
Services/home visits during pregnancy & to age 3.	
First Born-United Way of Santa Fe.....	660-7720
All services are free & offered to all women who are first time mothers in Santa Fe.	
La Familia Medical Center .....	982-5460
Prenatal & after delivery Promotora home visiting services, breastfeeding support & parenting classes. (accepts Medicaid)	

## Transportation for Doctor Appointments

Safe Ride Services .....	1-800-797-7433
Santa Fe Trails Bus Route.....	955-2001
For the following insurance providers you must be a Centennial Care members only, advance notice required. Some availability for urgent response & return home dependent on carrier.	
Blue Cross and Blue Shield Centennial Care .....	1-866-913-4342
Molina Centennial Care.....	1-888-593-2052
Presbyterian Centennial Care.....	1-866-634-2619

## Assistance with Bills and Rent

Assurance Wireless.....	1-888-321-5880
Federal Lifeline Assistance Program	
Goodwill Industries-Support Services for Veterans with children.....	216-3307
The Housing Trust.....	989-3960
Assistance with first-time home buyers, rent, assistance for terminally ill.	
HELP New Mexico.....	986-9003
Life Link.....	438-0010 x13
Assistance with first month's rent & move cost and assistance when rent is overdue.	
LIHEAP.....	1-800-283-4465 or 827-1932
Low income home energy assistance program. Financial assistance for heating/cooling expenses	
PNM Good Neighbor Fund (Salvation Army).....	1-888-342-5766
Safe link Wireless (low income telephone assistance program).....	1-800-723-3546
Financial assistance for phone expenses.	
Salvation Army Family Services. Financial assistance for bills only.....	988-8054
St. Vincent de Paul-1088 Early Street Monday or Thursday 10am-12pm .....	989-8328

## Child Care Financial Assistance

Children Youth and Families Department.....	827-4282
Child Care Bureau .....	827-4698
1122 Paseo de Peralta (PERA Building) Room 112 (first Floor). Need SS#s. verification of income & driver's license & birth certificate for children to apply. Appointments necessary except on Tuesdays.	

## Food Assistance

Bienvenidos 1511 5th Street.....	986-0583
Food bank, sleeping bags, clothing available . Sack Lunches(M(10-1:30), T-Th(10-2:30) For Homeless individuals/families . Grocery Boxes(M(11:30-1:30),T-Th(11:30-2:30).Photo ID & proof of residence required.	
Christ Lutheran Church 1704 Arroyo Chamiso.....	983-9461
Distribute food bags on Thursdays 9:00 to 11:00 am. First come first served.	
Commodity Food Surplus Program.....	242-6777
For families of children under 6 and individuals over 60. Income guidelines similar to WIC. Proof of income required. Monthly distribution at the County Fairgrounds, 3229 Rodeo Road, on 3rd Tuesday 9:30—1:30.	
Food for Santa Fe 1222 Siler Road.....	www.foodforsantafe.org
A bag of food per person, no questions asked. Thursday mornings 6:00-9:00.	
Food Stamps (SNAP: Supplemental Nutrition Assistance Program).....	827-1932
Kitchen Angels (delivered to your home).....	471-7780
Must be in medical crisis, homebound and under 60 years old	
St. John's Catholic Church Soup Kitchen-1301 Osage.....	983-5034
Free lunch Monday, Tuesday, Thursday, 11:15 am to 12:15 pm.	
St. John's United Methodist Church (Cordova Rd. & Old Pecos Trail).....	982-5397
Bag of groceries Tuesdays or Thursdays from 10-12	



## HEALTH, FINANCIAL & OTHER ASSISTANCE

**Medicaid, also known as Centennial Care.** Centennial Care is the name of the New Mexico Medicaid program. Even if you have not been eligible for free health care under Medicaid in the past, you may be eligible now under the higher income guidelines. To apply, call the Medicaid Expansion hotline at 1-855-637-6574 or apply on-line at [www.yes.state.nm.us](http://www.yes.state.nm.us). You can also enroll in person at the Income Support Division office, 39B Plaza La Prensa, Santa Fe, NM 87504, Telephone: (505) 476-9200.

**New Mexico Health Insurance Exchange, also known as BeWellNM.**

This health coverage can be very low cost. You may apply for coverage, compare plans, and enroll online at [www.bewellnm.com](http://www.bewellnm.com) or by calling 1-855-996-6449.

**These Santa Fe County providers can help you with enrollment:**

La Familia (Alto Street).....	982-4425
La Familia (Southside).....	438-3195
La Familia (Dental).....	984-5048
Health Care for the Homeless.....	988-1742
First Choice Community Healthcare.....	231-3406
PMS Ortiz Mountain Health Center.....	471-6266
PMS Santa Fe Community Guidance.....	986-9633
Las Clínicas del Norte/School Health.....	455-4026
CHRISTUS St. Vincent.....	913-5220
Santa Fe County Community Services Department.....	992-9849
Southwest Care Center/Women's Health.....	988-8869

## SANTA FE COUNTY HEALTH CARE ASSISTANCE PROGRAM

If you live in Santa Fe County, don't qualify for Medicaid, and meet certain income guidelines, the Santa Fe County Health Care Assistance Program will reimburse approved providers for your care. The program is offered only through approved primary care, substance abuse, mental health, and dental providers and is *not a substitute for insurance*. The program does not cover hospital care. It is open to County residents regardless of immigration status. Income requirements vary according to household size. For example, for a single person, the cutoff is \$36,600/year, and for a family of four, it is \$52,250/year. For more information call: Santa Fe County Community Services Department at 505-992-9849.

## OTHER FINANCIAL ASSISTANCE FOR MEDICAL EXPENSES

Child Support Enforcement.....	1-800-288-7207
Children's Medical Services.....	476-2603
Federal Social Security Office.....	473-3707
La Familia Health Care for the Homeless.....	988-1742
Molina Medical (accepts Medicaid and Molina Medicaid).....	490-4042
Provides primary care to all ages	
Premium Assistance for Maternity.....	1-888-997-2583
For those who don't qualify for Medicaid & insurance doesn't include maternity care.	
Prescription Discount Card Program.....	1-888-886-5822
Project Access.....	795-2356
TANF (Temporary Aid for Needy Families).....	827-1932
Together RX Discount Drug Program.....	1-800-250-2839

Many Mothers Practical & emotional support to any family with a new baby.....	466-3715
New Vistas Early Childhood Program.....	988-3803
Home visiting, training & support for parents of children 0-3 with special needs. (accepts Medicaid)	
Early Education Program (New Mexico School for the Deaf) (accepts Medicaid).....	476-6418
Home and center based services for families with children 0-6 who have a permanent hearing loss regardless of severity.	
Teen Parent Center.....	467-2827
Offers parenting classes & home visiting services for teen parents.	
Young Fathers of Santa Fe.....	505-919-8109/505-699-7431
Supports any father & family age 26 and younger.	

## RESOURCES AND INFORMATION

Abortion Hotline.....	1-800-772-9100
County Extension Service.....	471-4711
"Baby's First Wish" and "Just in Time Parenting" online newsletters & Nutrition Program: "Ideas for Cooking and Nutrition"	
Foster/Adoption Hotline.....	1-800-432-2075
Hopewell Community Center Computer lab for public use, English GED.....	954-1237
La Familia Medical Center.....	982-5460
Parenting classes, birth preparation, & breastfeeding support.	
Nurse Advice Hotline.....	1-877-725-2552
Santa Fe Legal Aid.....	982-9886
Santa Fe Public Library.....	955-6780
Santa Fe Resource Opportunity Center Call for service hours and days.....	795-7494
Lunch, showers, job assistance, healthcare, counseling	
Somos un Pueblo Unidos.....	424-7832
Youth Shelters Street Outreach Services for homeless youth.....	988-2652

## PARENTING PUBLICATIONS

Baby's First Wish ( <a href="http://aces.nmsu.edu/ces/nmcyfar/babys-first-wish.html">http://aces.nmsu.edu/ces/nmcyfar/babys-first-wish.html</a> ).....	471-4711
Just In Time Parenting.....	471-4711
( <a href="http://www.extension.org/pages/Just_In_Time_Parenting_eNewsletters">http://www.extension.org/pages/Just_In_Time_Parenting_eNewsletters</a> )	
Mothering Magazine ( <a href="http://www.mothering.com">www.mothering.com</a> ).....	n/a
Tumbleweeds ( <a href="http://sftumbleweeds.com">sftumbleweeds.com</a> ).....	984-3171

## TEEN PARENTING SERVICES

Teen Health Centers (accepts Medicaid) Confidential care for youths 12-19 (accepts Medicaid)	
Santa Fe High School.....	467-2439
Capital High School.....	467-1081
Teen Parent Center (Santa Fe High School).....	467-2827
Birth Preparation & Parenting Classes. Male Involvement & Grandparent Support Groups.	
Young Fathers of Santa Fe.....	505-699-7431 or 505-919-8109
Young Parent Classes (La Familia Medical Center).....	982-5460
Youth Shelters Street Outreach.....	988-2652
Mothers Group	



## WHEN YOU NEED EXTRA HELP

### COUNSELING SERVICES General Support

CYFD Protective Services.....	827-7450
Esperanza Shelter for Battered Families, Inc.....	473-5200 or 1-800-473-5220
For families and individuals who have experienced domestic violence	
Gerard's House.....	424-1800
For grieving children, teens & families.	
La Familia Medical Center For LFMC patients only. (accepts Medicaid) .....	982-4425
Pastoral Counseling Center (accepts Medicaid).....	988-4131
PMS Home Care & Hospice.....	988-2211
Santa Fe Community Guidance Center/Su Vida.....	986-9633
For children & adolescents with emotional/behavior problems. (accepts Medicaid)	
Santa Fe Community Services .....	310-3624
Monday-Thursday 8:30-2:00-assistance with social security disability benefits	
Santa Fe Indian Health Services .....	988-9821
Solace Crisis Treatment Center.....	988-1951
(Hotline 986-9111/1-800-721-7273)	
Southwest Family Guidance Center.....	820-1871
Southwestern College Counseling Center .....	471-8575
Sky Center.....	473-6191
Free counseling for youth and families.	
Team Builders/Zia Behavioral Health.....	471-5006/820-0262
Teen Health Centers (accepts Medicaid) Confidential care for youths 12-19 (accepts Medicaid)	
Santa Fe High School.....	467-2439
Capital High School .....	467-1081
Teen Parent Center (Santa Fe High School).....	467-2827
Individuals, Couples and Group & Family Counseling.	
Southwest Care Center/Women's Health Services (accepts Medicaid).....	988-8869
Youth Shelters Counseling Center-5686B Agua Fria.....	983-0586
Counseling offered in your home if transportation is a problem. (21 & younger)	

### Conflict & Dispute Resolution

Bridges of Peace.....	501-7000
Mediation services for youth	
CASA (Court Appointed Special Advocates for Children).....	820-1500
Children's First Co-Parenting Support Services.....	473-7630
Teaching parents who are struggling with co-parenting conflicts; provide safe, neutral child transfer sites.	
Family Court Services Mediation services related to child custody .....	455-8140
Pegasus Legal Services for Children.....	505-244-1101

### Suicide

Crisis Response Hotline .....	820-6333/1-800-273-8255
National Spanish-Language Suicide Hotline...6.....	1-800-784-2432

New Mexico Suicide-Prevention Hotline.....	1-866-435-7166
Sky Center.....	473-6191
Suicide prevention and educational outreach. (NMSIP) New Mexico Suicide Intervention Project	

### Alcohol & Drug Abuse Counseling

Alcoholics Anonymous.....	982-8932
Al-Anon .....	473-0101
Cocaine Anonymous (24 hours) .....	344-9828
Desert Hills (Albuquerque).....	1-800-765-7330
Residential treatment for youth	
Friendship Club .....	982-9040
Life Link.....	438-0010
Millennium Treatment Services.....	473-0571
Narcotics Anonymous (24 hours) .....	866-885-6562
Quit NOW Stop Smoking.....	1-800-784-8669
Santa Fe Community Services.....	310-3624
Santa Fe Recovery Center.....	471-4985
Residential & outpatient treatment. (accepts Medicaid)	
Sequoyah Adolescent Treatment Center (Albuquerque).....	222-0355

### EDUCATION

#### GED Programs

Lifelink Bilingual GED classes.....	438-0010
Santa Fe Community College .....	428-1356
GED Adult Ed. Program, GED English as a Second Language. Onsite childcare.	
SER: Jobs for Progress GED, vocational training. On-site childcare.....	473-0428
Youthworks Free GED classes; jobs and services for youth. ....	989-1855

#### High School Diploma

Adelante.....	467-2571
Program for homeless students.	
Santa Fe Community College .....	428-1356
Adult education program.	
Teen Parent Center (Santa Fe High School).....	467-2827
High School diploma. on-site childcare, care coordination & support services.	

### TRANSPORTATION

Capitol City Cab .....	438-0000
Santa Fe Trails, City Bus Transportation.....	955-2001
Ask about student passes.	
St. Vincent de Paul .....	989-8328
Bus passes given out first Tuesday of the month.	

**For transportation for doctor's appointments, see Financial Assistance**

### EMPLOYMENT SERVICES

Department of Workforce Solutions.....	827-7434
Job Corps (Students 16-24).....	803-1994
One Stop Work Connection.....	827-7426
SER Program (Jobs for Progress) .....	473-0428
Youth Career Center (Capital High School).....	467-1166
(Santa Fe High School).....	
	467-2431