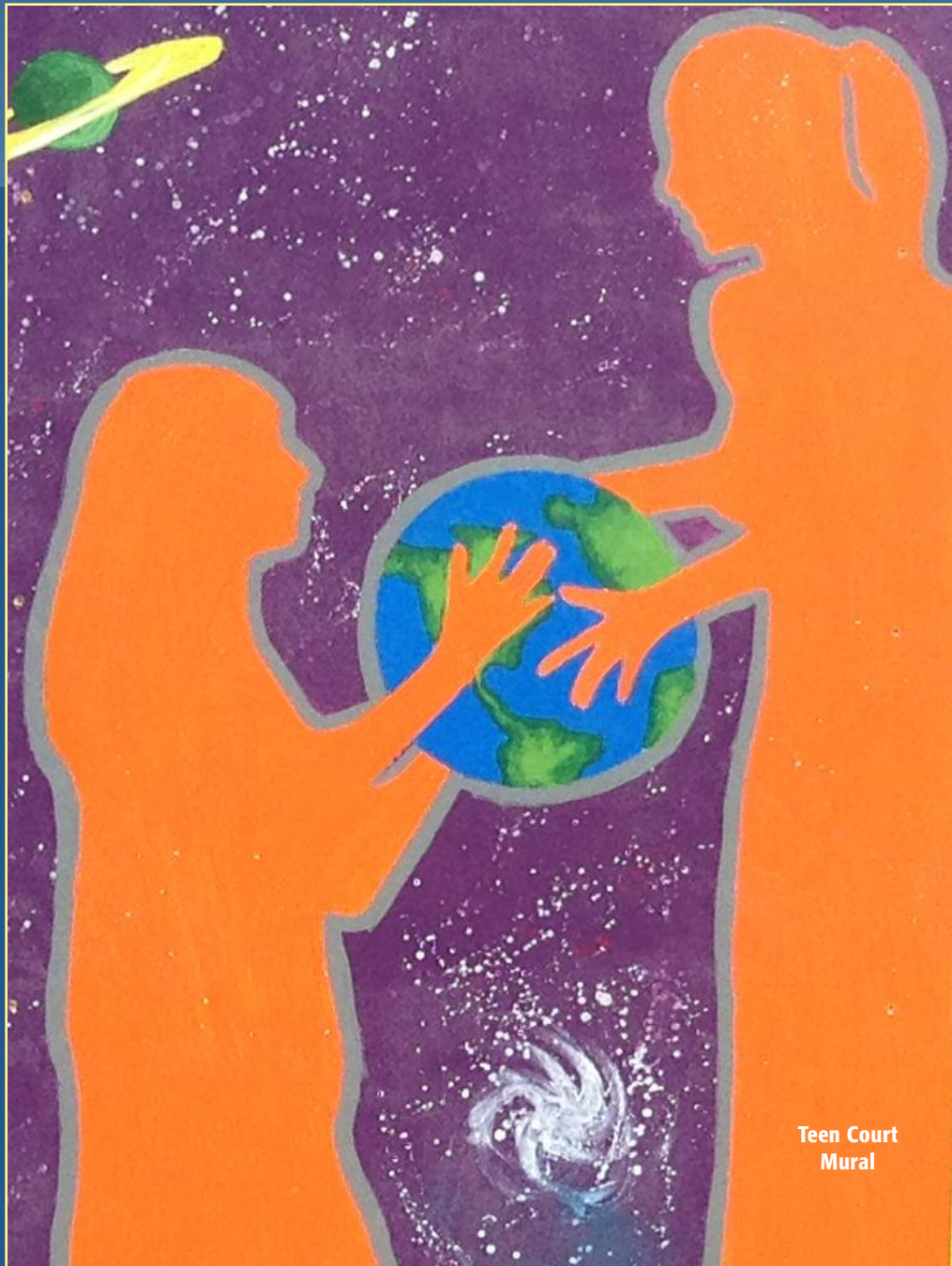


# SANTA FE COUNTY

## Annual Report

Fiscal Year 2013



Teen Court  
Mural

# SANTA FE BOARD OF COUNTY COMMISSIONERS



COMMISSION CHAIR

KATHY HOLIAN

DISTRICT 4



COMMISSION VICE CHAIR

DANIEL MAYFIELD

DISTRICT 1



COMMISSIONER MIGUEL CHAVEZ

DISTRICT 2



COMMISSIONER ROBERT ANAYA

DISTRICT 3



COMMISSIONER LIZ STEFANICS

DISTRICT 5



COUNTY MANAGER KATHERINE MILLER

## LETTER FROM THE COMMISSION CHAIR, KATHY HOLIAN

### Dear Santa Fe County residents:

**There have been many accomplishments in Santa Fe County this year. There is one issue that I would particularly like to highlight in this letter: how the County is dealing with the effects of climate change, particularly drought.**

This last year has been a challenging one in the County. We are in our third year of drought, and this last period has been the driest in our recorded history, bringing increased fire danger and severely reduced water supplies in many areas.

On the good side, the people of Santa Fe County are very aware that we are facing increased fire danger and that our water resources are less than abundant. Also on the good side, the County has begun to respond to our challenges in a variety of ways. The major areas in which the County has committed resources to preparing for the future are diversification and expansion of our water

supply, increasing our capabilities for firefighting and fire prevention, and land restoration.

plant that is on the site of the State Penitentiary. Plans are being made to increase the number of customers

---

...The major areas in which the County has committed resources to preparing for the future are diversification and expansion of our water supply...

---

One important step forward was the opening of the Buckman Direct Diversion (BDD) Project water treatment plant, allowing us to diversify our water supply by being able to access surface water from the Rio Grande. This project has also allowed the County to establish its own water/wastewater utility. This last year the utility delivered approximately 500 acre-feet of water to customers. Since it has a total capacity of around 2200 acre-feet in a year, there is still plenty of room left to serve others in the County where the need exists.

The County utility has also taken over the Quill wastewater treatment

hooked into the plant. This will help protect the aquifers in the region, and in the long run, the County will also have a supply of treated wastewater of its own.

Another important area where many advances have occurred in recent times is fire fighting and fire prevention. The Santa Fe County Fire Department has a Wildland Division that is responsible not only for fire suppression readiness and response, but also for the reduction of the threat of a catastrophic wildland fire in the Wildland Urban Interface. This latter mission consists of public education and outreach, as well as organizing fuel reduction projects in places where homes are

## Letter From the Commission Chair: Kathy Holian

surrounded by dense forests with abundant undergrowth.

Another step forward by the Santa Fe County Fire Department has been to establish a program that trains youths from ages 18 to 25 in forest management, fire ecology, and watershed health.

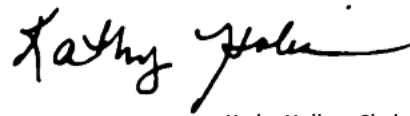
The third area to prepare for drought that the County has become more involved with is land restoration. This activity improves the infiltration of rainwater into the land, thereby feeding the aquifers as well as watering the surrounding trees

and plants more effectively.

An example of a project that staff from the County worked on last year was one that occurred on the Rio Quemado, a tributary of the Rio Santa Cruz. In this case, the County received a grant to develop a plan to reduce flooding and erosion and to ensure that more water enters the acequias. There have also been projects on a number of the County's other Open Space parcels.

Santa Fe County also has a responsibility to plan for the long term impacts of climate change,

and to that end, the County is embarking on a new Economic Development Plan which will carefully consider the inherent opportunities that exist with climate change, such as the development of new technologies around energy efficiency, renewable energy, water conservation, energy storage; new strategic partnerships with local and regional entities; and new initiatives that establish the County at the forefront of turning a climate change challenge into an economic development opportunity.



Kathy Holian, Chair

### On the cover: Teen Court Community Mural

The cover image is one of nine artistic panels created in partnership with Teen Court, Fine Arts for Children and Teens, Zona del Sol, and community youth. See more of the panels on page 22.

A SUSTAINABLE SANTA FE COUNTY 6

AFFORDABLE HOUSING PROGRAM 14

BUILDING COMMUNITY/  
COMMUNITY HEALTH 16

COMMUNITY SAFETY 24

COMMUNITY INFRASTRUCTURE 31

GOVERNMENT EFFICIENCY AND  
TRANSPARENCY 36





# A SUSTAINABLE SANTA FE COUNTY

## COMMUNITY PLANNING

Santa Fe County works with unincorporated communities throughout the County to create plans that guide future growth and development and address community needs and values through the Community Planning program in accordance with the Sustainable Growth Management Plan. Highlighted Community Planning Program accomplishments over the past year include:

- The Board of County Commissioners (BCC) adopted the Galisteo Community Plan by passing Resolution 2012-36 [www.santafecountynm.gov/documents/ordinances/2012-36.pdf](http://www.santafecountynm.gov/documents/ordinances/2012-36.pdf) on February 28, 2012 as an amendment to the Santa Fe County Sustainable Growth Management Plan.
- The Board of County Commissioners initiated a community planning process for the Chimayo community by passing Resolution 2012-48 [www.santafecountynm.gov/documents/ordinances/2012-48.pdf](http://www.santafecountynm.gov/documents/ordinances/2012-48.pdf) on March 27, 2012.
- Planning Division staff is working with the communities of Tesuque and La Cieneguilla to update their community plans.



Community of Chimayo

## SUSTAINABLE LAND DEVELOPMENT CODE (SLDC)

The draft Sustainable Land Development Code (SLDC) is currently being revised to incorporate relevant public comments received during the public comment period, over 2,500 public comments were received. Comments were received through study sessions, an online comment form and Board of County Commissioners (BCC) updates held in 2012. Santa Fe County is working to have a new draft for final review and BCC action by the end of 2013. In addition to the extensive rewrite the following items were developed for the SLDC process:

- Developed a Public Participation Plan for the SLDC, which was used to review the public review draft of the Code.
- Developed an online database for the public to submit their comments, concerns and revisions to the Code.
- Developed preliminary zoning map for the SLDC.

- Created GIS data and a map showing areas where residents or property owners have raised issues as to what the zoning designation is on their land for the draft SLDC Zoning Map. As staff meets with residents about their zoning designation and review old approvals etc. and the future land use map they are preparing a revised zoning map with proposed changes to the SLDC Zoning Map.
- Held 12 community public meetings in all four growth management areas of the County (El Norte, El Centro, Galisteo, Estancia) to review the SLDC.
- Conducted two study sessions and updates to the BCC on the SLDC and two meetings with the SLDC Advisory Group.

For more information on the SLDC visit  
<http://www.santafecountynm.gov/sldc>

### TRANSPORTATION

Santa Fe County participates within the jurisdiction of three regional planning organizations. Each organization is set up to help facilitate the planning and programming of federal funds to local transportation projects.

#### **The Northern Pueblos Rural Planning Organization**

The Northern Pueblos Rural Planning Organization (NPRPO) includes tribal, municipal and county jurisdictions, each seeking state and federal funds to assist with trans-

portation projects out-side of the Metropolitan Planning Organization (MPO) boundary, generally located in the northern portions of Santa Fe County.

#### **The Mid-Region Council of Governments, Rural Transportation Planning Organization**

The Mid-Region Council of Governments, Rural Transportation Planning Organization (MRRTPO) includes an area surrounding the greater Edgewood area.

#### **The Santa Fe Metropolitan Planning Organization**

The Santa Fe Metropolitan Planning Organization (MPO) will begin its update of the Santa Fe Metropolitan Transportation Plan in 2013. This year the County worked closely with the MPO to successfully fund a critical segment of the Santa Fe Rail Trail. Construction is intended to commence in 2013 and shall improve segments of the Rail Trail as it travels south from I-25. Phase I of the Caja Del Rio Road improvements were successfully completed this year with Phase II beginning in April. New pavement with extended shoulders for road integrity and bicycle movements were included. A critical study for the Community College District, the Northeast and Southeast Connector Location Study was programmed with the MPO Transportation Improvement Program and kicked off this year. The study will identify two new road segments east and north of Richards Avenue near the Community College aimed at relieving existing and future traffic.

### TRANSIT/BUS SERVICE

Santa Fe County provides “blue bus” service to the City of Santa Fe, neighboring communities of Española, El Dorado, Pojoaque, Tesuque and all of the tribal entities and many other areas in the County through a partnership with the North Central Regional Transit District (NCRTD). The regional

## A Sustainable Santa Fe County

transit tax collected in the County last year along with federal dollars provided funding to 11 NCRTD transit routes. The County transit tax also funded six regional routes operated by Santa Fe Trails bus system. That funding in Fiscal Year 2012 was able to provide over 210,000 passenger transit trips. The

transit tax collected in Santa Fe County also allowed the NCRTD to contribute more than \$1.9 million to support the New Mexico Rail Runner. The Board of County Commissioners requested expansion of routes by the RTD.

- Fiscal Year (FY) 2011 (July 2010 to June 2011) to FY 2012 (July 2011 to

June 2012) the ridership for all funded routes collectively increased from 374,211 to 431,941 per year.

- route from Espanola to Santa Fe increased from 18,853 to 24,170 with trends indicating that ridership is still increasing this Fiscal Year.

### OFFICE OF RENEWABLE ENERGY AND ENERGY EFFICIENCY

Major Fiscal Year 2013 accomplishments and activities include:

- Completion of a 113 kilowatt photovoltaic solar electric system on the roof of the new Herrera Judicial Complex.
- Using federal American Recovery and Reinvestment Act (ARRA) funding, replaced high pressure sodium streetlights with light emitting diode (LED) streetlights at an additional five County maintained intersections in District 1 in FY13. In addition to cutting energy usage and electricity cost in half, the LED streetlights last more than three times as long, providing for safer intersections and saving the ongoing operational cost of repair. Approximately 50% of the County's street lights are state-of-the-art energy efficient LEDs.
- Completed a "Santa Fe Public Power Study" investigating the economic feasibility of the City and County cooperatively establishing a publicly-owned and operated electric utility. The study concluded that consumer electric rates could be lower than under the current service provided by a private utility, while at the same time using 45% renewable energy (by 2033) as the electric generation source. The study found that substantial job creation and economic stimulus could be realized from a City/County-owned electric utility.
- Used American Recovery and Reinvestment Act (ARRA) funding to install 9 solar hot water and 2 solar space heat-

ing systems on low income households in the County.

- The County Commission adopted Resolution 2013-50, promoting "community solar" in the County. Community solar projects provide an opportunity for residents and businesses to participate in a local solar project, when installing a roof-top solar system is not viable. County staff worked with the City, Public Service Company of New Mexico and the NM Public Regulation Commission on establishing a community solar program in the region.
- Implemented an aggressive public outreach, education and technical assistance program. The Office of Renewable Energy and Energy Efficiency: maintains a comprehensive web site, conducts information tabling at community events (Earth Day, CommUNITY Day on the Plaza, Solar Fiesta, Santa Fe Home Show, etc.), makes presentations to civic organizations and homeowner associations (nine presentations in FY13), responds to phone and e-mail inquiries from the general public, writes columns and articles for local newspapers, runs displays ads in publications throughout the County, arranges radio interviews (KSWV, KSFR, The Voice 101.5), appears on local access television shows and runs display advertisements throughout the County. In total, this represents direct contact with an estimated 600 to 800 citizens in FY13 and indirect contact with thousands via print, radio and television media.



### ECONOMIC DEVELOPMENT

- Santa Fe Studios — a TV pilot, made-for-TV movie and Warner Bros film have used the facility for filming and production.

#### Job Hours Reported

Third Quarter 2012: 6474 job hours reported

First Quarter 2013: 6,122 onsite job hours reported

- Bicycle Technologies International (BTI) has broken ground near the Santa Fe Community College and is scheduled to complete the construction of its new 65,000 square foot office and warehouse facilities in 2013, and will move in to its new home in 2013. This LEDA project will allow BTI to increase its volume of business and create up to 200 direct and indirect jobs

within Santa Fe County.

- REDI Net is a middle mile broadband initiative that will provide high speed, high capacity fiber optic broadband connectivity to communities from Santa Fe northward to Dixon, including the pueblos of Tesuque, Pojoaque, San Ildefonso, Santa Clara, Ohkay Owingeh, and including the City of Espanola, Los Alamos, and White Rock. To date, approximately 88% of the fiber optic line has been installed, and the project will be 100% completed by the end of 2013.
- Santa Fe County received a \$2,500 grant from the NM Economic Development Department for the Certified Communities Initiative, which will be used to support unincorporated communities within Santa Fe County with their marketing and Public Relation efforts.

### HIGHLIGHTED PUBLIC HOUSING SERVICES ACCOMPLISHMENTS

- In March 2013, The Santa Fe County Housing Authority Staff successfully achieved a 100% occupancy rate for public housing. Having every home occupied with a family is a display of the commitment and dedication of staff working in this program.
- New cabinets were placed in 37 public housing kitchens and bathrooms at the Valle Vista and Camino Jacobo housing sites
- New exterior stucco was placed on 30 public housing homes at three public housing sites including Santa Cruz, Valle Vista and Camino Jacobo
- Landscape improvements to the Jacob D. Martinez housing site



La Entrada landscaping.

were completed including two outdoor shelters built onsite for the convenience and enjoyment of housing residents. Improvements include three fenced planters located throughout the site for residents to grow flowers or gardens and a landscaped area with

seating near the entrance of the site for residents to sit and enjoy the improved area near there.

- Community Clean-up Days at three housing sites were held throughout the 2012 summer months. The clean-up included many County employees and housing residents who made a noticeable difference to the grounds and community gathering areas.
- At the Santa Cruz Housing Site children who live onsite participated in a painting project that has kept the wall from being filled with graffiti.

### HIGHLIGHTED COMPLETED OPEN SPACE, TRAILS AND PARKS PROJECTS



Santa Fe Rail trail

#### Rail Trail Section 1

The construction of the first 1.7 mile section of the 12 mile improved trail is complete. Sections 2, 3, 4 and the Rabbit Rd. Trailhead are being prepared for construction in late 2013. Completion of these three sections will bring the Rail Trail to Eldorado providing a viable bicycle route from the community in Eldorado to downtown Santa Fe. Future sections will extend the trail to the Galisteo Basin.



#### El Camino Real Trail

El Camino Real Park is a portion of the Santa Fe River Greenway, a joint project with the City of Santa Fe to create a greenway of parks and trails along approximately 15 miles of the Santa Fe River from downtown Santa Fe to the Waste Water Treatment Plant west of NM

599. The County completed construction of one mile of paved pedestrian/ bicycle/ equestrian trail including two pedestrian bridges and a trailhead between Cottonwood Dr. and NM 599 in October of 2012. At the opening ceremony the trail was dedicated by the National Park Service as a retracement trail of the El Camino Real de Tierra Adentro National Historic Trail.

### La Piedra Open Space Trail

Completed two miles of critical trail connection linking the Dale Ball network of trails with the County's Little Tesuque Open Space and the Santa Fe National Forest.



La Piedra

### South Meadows Open Space

Located at the intersection of South Meadows Drive and Rufina Road, the South Meadows Open Space property was identified as a significant community resource by community members in the year 2000. The County Commission recognized a unique opportunity to provide a single, large parcel of open space to the community in a rapidly urbanizing area of the greater Santa Fe Metro Area and approved the property for acquisition in 2001. The design of the project is currently being completed and the project is expected to go to bid in July 2013 and construction is expected to be completed by November of 2013.

#### Approved Volunteer Coordinator Position

The Board of County Commissioners approved a volunteer coordinator position. The position will coordinate volunteers to assist with Santa Fe County Open Space to for trail building, tours, activities, clean-ups, restoration work and other community projects.



Burro Lane Park

### Burro Lane Park

Burro Lane Park, completed in September 2012, is a 3 acre neighborhood park located at the intersection of Burro Lane and Quail View Lane southwest of the roundabout at West Alameda and Siler Rd. in Santa Fe. The park features sheltered picnic facilities, a trail loop, playground, and small parking area as well as a school bus turnaround. The design for Burro Lane Park is based on the idea of creating and sustaining a natural habitat for birds to forage, nest, and live. Shelters, observation points, and a walking trail allow for opportunities to view and enjoy the birds and other wildlife as well as native wildflowers, grasses, and drought tolerant shrubs, and trees. The site was graded to maximize passive water harvesting opportunities to maintain the native vegetation.

### Edgewood Open Space

The Edgewood Open Space is a 30 acre tract located in the Town of Edgewood and was purchased by the County for open space in September of 2000. The project consists of an equestrian arena, trails, and a picnic area and will be jointly operated with the City of Edgewood. The construction contract was awarded in December of 2012 and the project is scheduled to be complete by August 2013.





Arroyo Hondo Wetlands. Restoration and Trailhead Ribbon Cutting Ceremony

### Arroyo Hondo Wetlands Restoration and Trailhead

Restoration work in the Arroyo Hondo wetlands was completed in 2012 and the new trailhead and parking was officially opened at a ground breaking ceremony in May of 2013. The restoration project included the removal of invasive species and the planting of native willow and cottonwood trees. The new parking and trailhead provide an additional connection to the already popular trail system.



Arroyo Hondo

### PROJECTS UNDERWAY

#### Romero Park Masterplan and Phase 1 Improvements

Romero Park is a regional park located on the Santa Fe River in the Traditional Village of Agua Fria off Caja del Oro Grant Rd./County Rd. 62. The park is part of a 70 acre complex that includes the La Familia Medical Center, Nancy Rodriguez Community Center and the Agua Fria Fire Station. The County recently hired a landscape architect to create a master plan for the park. The master plan for the park will involve extensive input from the community and will be implemented in phases beginning in 2015.

#### Old Judicial Redevelopment Study

Santa Fe County has initiated a feasibility study to determine the highest and best use for the former First Judicial Complex in downtown Santa Fe. Study options include remodeling to consolidate County Administrative Offices as well as the sale of the property.

#### Ken and Patty Adams Senior and Community Center

Design is underway for the expansion of the existing Senior Center in Eldorado. The additions also include facilities for a new Community Center which will be located between the existing Vista Grande Library and the expanded Senior Center.

### OTHER PROJECTS CURRENTLY UNDERWAY

- Parking Facilities at the Cundiyo Community Center
- Renovation of La Cienega Fire Station No. 1
- Additions and Renovations to La Cienega Fire station No. 2
- La Bajada Ranch Planning and Programming
- Highway 14 Senior/Community Center
- District Attorney Complex Upgrades and Improvements
- Northern Santa Fe County Recreation Complex in District 1
- Arroyo Hondo Trail from the Community College District to Hwy. 599
- Los Potreros Open Space leasing and Management
- Mt. Chalchilhuatl Acquisition and Remediation
- El Rancho and Pojoaque Tennis and Basketball Court Resurfacing
- Herrada Road Paving and Drainage Design
- Los Pinos Road (CR54) All Weather Crossing Design
- CR98 Road Widening Phase II Design
- Camino Torcido Loop Archaeological Study / Paving and Drainage Design
- Road Improvements to Caja Del Rio (Southern Segment)
- Arroyo Alamo West Drainage Study

### Santa Fe River Greenway Project

**River Greenway Acquisition Program** - Acquisition of land and easements along the Santa Fe River from the Santa Fe City limits to the Waste Water Treatment Plant to create a public Greenway is underway and is an ongoing process as the Greenway is developed.

**Santa Fe River Greenway** - Frenchy's Field to Siler Rd. Section- Design of a multi-use trail and river restoration for the Santa Fe River corridor from Frenchy's Field, where the City's river restoration efforts end, to Siler Road is currently underway and expected to be complete by June of 2013.

**San Ysidro Park River Channel Restoration** - The construction of channel improvements on the Santa Fe River at San Isidro Park, between San Ysidro crossing and County Road 62 is underway and expected to be complete by August 2013.

**Conceptual Design of the Santa Fe River Greenway Siler Rd. to the Waste Water Treatment Plant** - Conceptual design for river channel reconstruction and a pedestrian/ bicycle/ equestrian trail for the remaining sections of the Santa Fe River Greenway. The conceptual design will establish the project limits for property acquisition. The project also includes the design of river channel improvements for the section of the Santa Fe River from Cottonwood Drive to NM 599.

### Transparent Capital Improvement Planning and Programming

Santa Fe County has embarked on a rigorous and transparent capital improvement planning and programming process that allocates scarce resources to the highest priority needs, meets constituent and elected officials' concerns, and complies with state statutes and performance-based budgeting principles.

The process starts with the plan. The County's Sustainable Growth Management Plan (SGMP) identifies levels of service and desired outcomes for the full range of County services. Comparing the SGMP's levels of service with the actual conditions on the ground allows County staff to pinpoint existing deficiencies in capital assets. Further, the County projects growth and can anticipate future requirements. Finally, public outreach efforts from these processes, all identified requirements generated by the community. Projects are rolled into the County's Capital Improvement Plan (CIP), which is a listing of all needs along with an estimated cost, planned funding source, and projected year of execution for each. This CIP is the foundation for the County's submission to the State as part of the State's Infrastructure Capital Improvement Plan (ICIP) process, the basis for any decision to issue general obligation bonds (such as those recently approved by the voters this past November), and the starting point any grant applications used to fund capital projects. The CIP is formally presented to the Commission once a year.

At present, the County's CIP has approximately \$500 million in projects. Obviously, the County doesn't have the resources to meet all these needs all at once, so it must prioritize and plan to meet the needs over time. To this end, the CIP has a 6-factor prioritization scheme, taking into account such things as health and safety, promoting economic development, leveraging outside funding, and consistency with the SGMP. Then, on an annual basis, the Commission allocates resources to the highest-scoring projects on the CIP. Based on current revenue sources, the County can expect to meet about 5% to 10% of the CIP needs each year. The CIP will be continuously updated as the County continues to grow, evolve, and improve.

The CIP and County forms to submit new project to the CIP can be found at [http://www.santafecountynm.gov/public\\_works](http://www.santafecountynm.gov/public_works) under "Quick Info".



# AFFORDABLE HOUSING PROGRAM

## FORECLOSURE PREVENTION PROGRAM

Through the Santa Fe County Affordable Housing Foreclosure Prevention Program, the County acquired two homes and sold two homes in Fiscal Year 2013. Staff has another home under contract with a closing date in June, while a fourth home may be under contract during this fiscal year.

The purpose of the acquisitions is to preserve the affordable housing stock and original subsidy loans through resale of the units and assumption of the subsidy loans by households with incomes under 80% of Area Median Income.

Outside of the foreclosure prevention program, when owners of affordable housing program homes need to sell due to changing family size, job loss, relocation or other factors, the County facilitates voluntary sales and subsidy loan assumptions to other income eligible households, thereby preserving the affordable housing stock. This has been done for one sale to-date and the County is currently working with several other homeowners in this process.

## RENT-TO-OWN PROGRAM

A rent-to-own program was created and seeking approval from the Housing Authority Board in Fiscal Year 2013. This program enables income eligible households to enter into both a rental and purchase agreement and use the term of the lease to reduce debt, improve credit scores and save money for a down payment

## DOWN PAYMENT ASSISTANCE PROGRAM

Santa Fe County made six down payment assistance request approvals for Fiscal Year 2013 totaling \$110,000 in assistance, with a seventh request in process. These are zero percent, non-amortizing, deferred payment loans which are due on sale or vacating of the property. All of the assistance has been provided for the purchase of existing homes, including a mobile home on a permanent foundation.

The County proposed revisions of the enabling ordinance and resolution including regulations for the down payment assistance program which would increase program utilization and make more efficient use of the funds. Staff expects approval of the revised ordinance, resolution and regulations from the New Mexico Mortgage Finance Authority and the Board of County Commissioners by the end of the fiscal year.

### ROOF REPAIR AND REPLACEMENT PROGRAM

To finance roof repair and replacements for low income households, the County offers zero percent, non-amortizing, deferred payment loans which are forgiven at the end of five years, unless the property is sold or vacated during that five year period. During this fiscal year, the County transitioned management of this program from Los Amigos E.R.C., Inc. to County staff.

The County has revamped the existing program regulations for the roof repair and replacement program in order to more clearly assign responsibility for contractor selection to the homeowner and provide better guidance on the preparation of scope of work, approval of final contractor pay requests and selection of households to participate in the program. The revised regulations for the roof repair and replacement program were approved by the Mortgage Finance Authority (MFA) and by the Board of County Commissioners (BCC). Since then, the County has completed or initiated six roof repair and replacement contracts.

### AFFORDABLE HOUSING AGREEMENTS

The County worked with the developers of La Entrada and La Pradera to prepare amended affordable housing agreements which made numerous substantive changes in the existing agreements, including the following: changing affordable housing requirement from thirty percent to fifteen percent of the total number of homes in the development; enabling non-profit organizations to hold County affordability mortgages and liens, under certain conditions; changing the controlling regulations from the Community College District affordable housing rules to the more current inclusionary zoning ordinance and regulations; providing greater flexibility in the marketing plan, time period for building the affordable homes and in the product mix between two, three and four bedroom units.

Both amended affordable housing agreements were approved by the BCC and set the stage for more comprehensive changes which are being made to the County inclusionary zoning ordinance and regulations. These changes are being developed in coordination with a developer stakeholder committee and will be presented to the BCC for consideration later in this calendar year.

## BUILDING COMMUNITY COMMUNITY HEALTH



### CADDY PROGRAM

Santa Fe County made changes to Santa Fe County's Chauffer and Designated Driver Program (CADDy) program to reduce ride cost and to specifically target the most important ride, the ride home from a bar or party where alcohol is served. Beginning July 1, 2012 the CADDy program started offering \$1 rides home from any licensed liquor establishment or drinking location. Bar table tops and coasters were distributed throughout the City and County encouraging patrons to take advantage of the reduced rate during the summer months.

"The program funded over 13,000 rides in 2011 and this summer we want to make sure that

everyone has an opportunity to get a safe ride home," stated Health and Human Services Division Director, Rachel O'Connor.

The Chauffer and Designated Driver Program (CADDy) is a safe ride home alternative to driving drunk. Santa Fe County subsidizes cab rides with Capital City Cabs for patrons of bars and other alcohol dispensing locations on Friday and Saturday nights. For just \$1 adults ride the cab from a bar or party home between 5:30 p.m. to 2:30 a.m. Cab riders pay \$1 each for the first 7 miles or \$25 cab fare. If the fare is more than \$25 the riders are responsible for the difference. Call CADDy 438-0000.

### New Year's Eve

More than 160 people caught a CADDy cab ride home on New Year's Eve. The CADDy program expanded its regular Friday and Saturday night schedule to include New Year's Eve this year, which fell on a Monday. Typical ridership on Friday and Saturday nights is between 100 - 120 riders.

#### CADDy Rides Provided

Fiscal Year	Riders Provided
2010	8897
2011	12,975
2012	15,213

The DWI Program conducted two extensive media campaigns leveraging free earned media as well as paid marketing. The summer program, *Kiss Your Baby Goodbye*, targeted the vehicle forfeiture initiative and the winter Holiday campaign, *Who's Picking You Up Tonight?*, focused on the \$1 CADDy cab ride home from a bar. More than 50,000 pieces of collateral material, coasters, magnets,

flyers, posters and key fobs were distributed to liquor establishments.

In addition to the two extensive media campaigns several anti-DWI United Artists Digital Theater ads played more than 53,000 times in movie theaters at the Santa Fe Regal 14 complex. These ads were separate from the CADDy campaigns, but in support of the media campaigns.



### OTHER DWI PREVENTION PROGRAMS AND HEALTH INITIATIVES

**Keeping A Clear Mind** is a comprehensive and beneficial curriculum that has proven results in helping students resist drug pressure and educating parents. This Fiscal Year 300 Pojoaque School 4th Grade students participated multiple times in the curriculum.

**Envision Your Future** is a program that guides youth in creating a positive future by developing the intrinsic motivation to make healthy choice behaviors, including preventing underage drinking and drugs, to make healthy choices in friends and to complete their education. Six Pojoaque Intermediate Schools Teachers were trained to Facilitate Envision Your Future. This Fiscal Year 150 Pojoaque School 5th grade students participated.

**Second Step** is a classroom-based social-skills program for children 4-14 years of age that teaches socio-emotional skills aimed at reducing impulsive and aggressive behavior while increasing social competence. In the Santa Fe School District approximately 1100 students kindergarten through 8th grade participated multiple times.

### DWI COMPLIANCE MONITORING AND TRACKING PROGRAM

**S**anta Fe County Compliance Monitoring and Tracking Program screened 448 offenders from Magistrate and District Court in 2012, an increase of 1% from the previous year. A total of 1087 DWI Offenders were supervised by the Compliance Staff in 2012, up from 1008 offenders in 2011.

### WALK TO STOP DUI

**T**he walk is a non-competitive 5K event hosted and sponsored by the Santa Fe County DWI Program, Santa Fe County Fire Prevention Division and many community partners to raise awareness and money to host a drug and alcohol free Post Prom Party for the Pojoaque High School 2013 Senior Prom. The 5K event was on April 6, 2013. The course started and ended at the Buffalo Thunder Resort.

### MOBILE HEALTH VAN

**T**he Santa Fe County Mobile Health Van (MHV) provides health services including blood pressure screening, oxygen assessment, blood glucose screening, cholesterol screening, flu vaccines, and body-mass index (BMI) testing FREE to Santa Fe County residents. Staff nurses also provide health information in English and Spanish to all County residents, and at local health fairs and events.

In 2013 the MHV expanded services to include weekends. The MHV travels across the County to provide personal care information and printed materials on behavioral health providers, dental providers, eye care providers and the Santa Fe County Prescription Drug Card. The MHV also makes frequent stops at Santa Fe County Senior Centers in El Rancho, Chimayo, Edgewood, Eldorado and Santa Cruz. Expanded Saturday and Sunday services now allow the MHV to be a frequent visitor at your local community gathering places and places of worship.

### SANTA FE COUNTY DRUG TAKE BACK DAY COLLECTS 700 POUNDS OF UNWANTED PRESCRIPTION DRUGS

**T**he Prescription Drug Take Back Day in September 2012 collected more than 700 pounds of expired, unused, and unwanted prescription drugs. Collaboration between the Drug Enforcement Administration (DEA), Santa Fe County Health Department, Santa Fe County Sheriff, Santa Fe City Police and the State Police brought in over 700 pounds of drugs that people cleaned out of their medicine cabinets, the largest amount ever collected in Santa Fe.

This was a chance for people to rid their homes of dangerous prescription drugs and provided an opportunity to prevent pill abuse and theft. People brought these hundreds of pounds of medication to the old Wal-Mart, the Sheriff's office and to the State Police office. The service was free and anonymous.

According to national data New Mexico has the highest drug overdose death rate in the United States. Studies show that a majority of abused prescription drugs are obtained from family and friends, including from the home medicine cabinet. Americans are now advised that their usual methods for disposing of unused medicines (flushing them down the toilet or throwing them in the trash) pose potential safety and health hazards and should not be done.

Santa Fe County hosted another Prescription Drug take back day on April 27, 2013 with six locations around the County, where an additional 400 pounds of unwanted and unused medications were collected.

#### Santa Fe County MHV Statistics July 1, 2012-March 2013

Total Visitors	1,083
Blood Pressure checks	629
Blood Glucose checks	520
Prescription Drug Cards	255
Referrals	153



## COAST2COAST

All Santa Fe County residents can receive a free discount prescription card under the Coast2Coast Rx card program, which saves an estimated average of 50 percent on the retail cost of prescriptions.

The Coast2Coast Rx discount card is honored at all major chain pharmacies and most independent pharmacies in Santa Fe, and includes more than 60,000 drugs in its formulary.

In 2012, the Santa Fe County Health Division distributed over 10,000 prescription drug cards

through Santa Fe County school districts, local pharmacies and businesses. Santa Fe County residents using the Coast2Coast program filled 18,791 prescriptions, saving customers \$797,657 in prescription drug costs.

In addition to the prescription discounts, the card also provides as much as a 50 percent discount on dental, vision and hearing care and between 50-80 percent discounts for lab and imaging tests. The cards may be used locally and nationwide at any participating retail pharmacy with no membership fees or restric-

tions on the frequency of use. A cardholder, their family and their pets may use the card as often as needed. Family members, including all dependents, can also use the card. The discount prescription card can be downloaded from the Santa Fe County website:

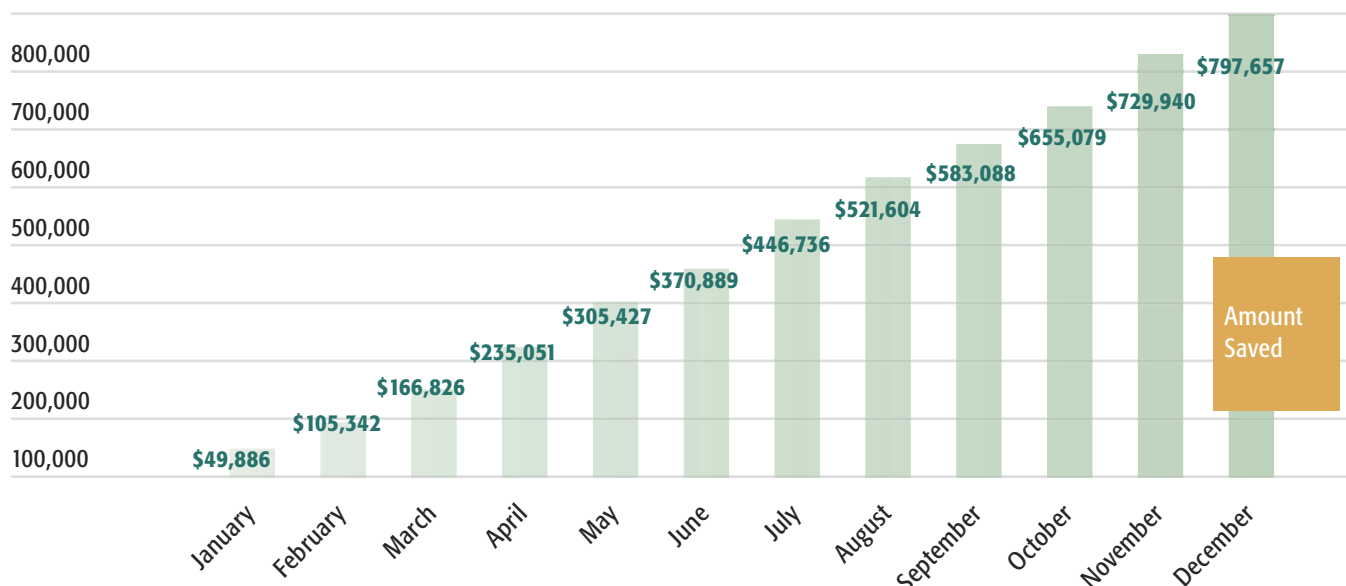
[www.santafecounty.org/community\\_services/bhsd](http://www.santafecounty.org/community_services/bhsd).

The card is also available at pharmacies and offices around Santa Fe County.

*Below is a graph of total dollars saved in calendar year 2012.*

### Coast 2 Coast Rx Card Savings

#### Total Year to Date Savings



### SENIOR SERVICES PROGRAM

Santa Fe County is in its second year of providing services to seniors after transitioning the program from the City of Santa Fe. With our dedicated, high quality staff, the County has grown the program considerably in 18 months of operation. The County continues to provide congregate (group) meals five days a week in the communities of El Rancho, Chimayo, Santa Cruz, Rio en Medio, Edgewood and Eldorado. In addition, the County has expanded its home delivered meal program and serves approximately 137 individuals daily including the underserved areas of La Cienega, Highway 14, 599 corridor and Cerrillos. These communities, along with other northern areas, are being served through our newly

opened kitchen facility at the Casa Rufina Apartment Complex in Santa Fe. Santa Fe County also experienced a significant increase in the number of seniors enjoying congregate meals with 697 individuals participating from July 2012 – December 2012. In addition to the congregate meals, seniors participate in a variety of activities offered at each center.

Six-Month Statistics for Santa Fe County Senior Services Program (July 2012 – December 2012)

- 14,000 home delivered meals daily to 137 eligible homebound seniors
- 14,517 congregate meals to 697 eligible seniors
- 3,612 one-way trips for medical

appointments, grocery shopping or personal care needs

Santa Fe County received funding to expand the senior center in Eldorado and is currently working with an architect on plans for the expansion. This expansion will provide additional dining space as well as an exercise room for the many physical fitness activities taking place daily. Santa Fe County completed the renovation of the Senior/Community center in Nambe. This facility was opened in September 2012 and serves as the Northern Health & Wellness facility.



Floraida Vigil, Elisa Martinez, Isabel Vigil, Commissioner Daniel Mayfield and Mary Medina enjoying lunch at the Bennie J. Chavez Center



Kevin Sanchez serving lunch for seniors at the Bennie J. Chavez Senior Community Center in Chimayo

### FREE CLINICS / CLASSES FOR SENIORS

#### Free Pneumonia Vaccination Clinic

The Santa Fe County Health and Human Services Division hosted a free Pneumonia vaccination clinic on in March 2013 at the Santa Fe County Nambe Senior and Community Center.

The clinic was sponsored by Santa Fe County Health and Human Services Division and Presbyterian Espanola Hospital.

#### Free Diabetes Prevention Workshop

Santa Fe County hosted a free Diabetes Prevention workshop to help raise awareness and provide information to residents in December 2012 at the Nambe Senior and Community Center.

#### Free Weekly Type 2 Diabetes Preventative Classes

Free weekly classes were held beginning January 2013 to help residents learn more about preventing Type 2 Diabetes and what they can do to reduce their risk of Type 2 Diabetes by making lifestyle changes.

The free weekly classes were held in Espanola with transportation provided by the Santa Fe County Senior Program. Diabetes prevention programming is based on the National Diabetes Prevention Program model.

#### Santa Fe County Senior Services Host Free Flu Shot Clinics

Santa Fe County Senior Services hosted three free flu shot clinics around Santa Fe County for Seniors in October 2012. The clinics were held at Senior Centers in Eldorado, Edgewood and Nambe. The New Mexico Department of Health provided Santa Fe County with 300 vaccinations for the free clinics. The free flu shots were distributed on a first come, first serve basis.

#### Senior Gardens

Santa Fe County is fortunate to have gardens on-site at the Ken & Patty Adam Senior Center in Eldorado and the Edgewood Senior Center. Besides being enjoyable, gardening has many benefits for overall physical and mental health. Growing their own vegetables provides seniors healthy food with nutritional value. The gardens currently produce a variety of squash, tomatoes, peppers, onions, cabbage, beets, carrots, leaf lettuce and chard. Fresh herbs are also available. These include stevia, dill, basil, thyme, chive, rosemary, oregano, parsley and mint.

### HEALTHCARE ASSISTANCE PROGRAM (INDIGENT FUND)

Funded by the County's Gross Receipts Tax and administered by the Board of County Commissioners in their capacity as the Indigent Hospital and Health Care Board, the Healthcare Assistance Program provides financial assistance to medically underserved residents to pay health care costs.

The program processed 8,997 approved claims for \$9,306,581.43 for calendar year 2012 for care provided by clinics, substance abuse treatment providers, ambulance services, and mental health providers within Santa Fe County including the City of Santa Fe; as well as by hospitals in Albuquerque, Española, Los Alamos and CHRISTUS/St. Vincent Hospital in Santa Fe.

### SANTA FE COUNTY IN 2013: A COMMUNITY HEALTH PROFILE

The Santa Fe County Health Policy and Planning Commission, as part of its mandate from the Santa Fe County Board of County Commissioners, is charged with providing updates to the County health plan. This year the County, through the Department of Community Services, partnered with CHRISTUS St. Vincent Regional

## Building Community Health

Medical Center to produce “Santa Fe County in 2013: A Community Health Profile,” completed in May 2013. The profile provides extensive information about the health of County residents. In addition to demographic and socioeconomic data, the report presents a wide spectrum of health indicators and behaviors, as well as factors contributing to health, such as access to food and recreation. The profile is available on

the County website, [www.santafecountynm.gov](http://www.santafecountynm.gov).

The profile is designed to encourage informed dialogue about how best to improve the health of County residents, as well as provide a rich resource for community service providers and organizations to use in their own planning and grant-seeking activities. The Community Services Department and the Health Policy and Planning Commission held a provider

forum on June 4, 2013, at Santa Fe Community College, in which over a hundred participants, including service providers throughout Santa Fe County, enthusiastically weighed in on the health challenges and opportunities within the County. The next phase is the development of the County health action plan, which will map out ways to improve the health of County residents.



### TEEN COURT OF SANTA FE COUNTY

Started in 1994, Teen Court supports the philosophy of breaking the cycle of behavior leading to criminal activity to keep teens out of Children's Court and the Youth Detention Center. Designed for first-time offenders, Teen Court offers alternative sentencing and is run for teens by teens, including volunteer Teen Attorneys. Teens are referred from Municipal and Magistrate Courts as well as the Juvenile Probation and Parole Office and Santa Fe Public Schools.

This Fiscal Year Teen Court received 426 referrals and 363 cases were heard and sentenced at District

Court. Teen Court defendants completed 6,846 hours of community service at local non-profit organizations and served 963 jury duties throughout the year. Teen Court staff completed 275 drug and alcohol assessments and monitored an average of 380 cases.

#### Teen Court Community Mural

One Teen Court community involved accomplishment this year was a mural project south side of Santa Fe, in front of Zona Del Sol. Teen Court defendants and community members constructed nine artistic panels over the course of four weeks in Fall 2012 creating the murals as part of a partnership between Teen Court, Fine Arts for Children and Teens, Zona del Sol and community youth. The panels depicted images agreed upon by community residents and the participating youth. Many of the youth artists and community members who worked on the project assisted with the unveiling on December 1, 2012 and gave their synopsis of how the mural evolved.





## COMMUNITY SAFETY

### CORRECTIONS

The Santa Fe County Corrections Division has improved overall operations in the past year to focus on the delivery of services that consist of quality of life and care, customer service, continuous quality improvement, development of employee retention and fiscal responsibilities.

The Corrections Division has refocused on the safe direct supervision of the entire inmate population by increasing staffing levels and upgrading the facility and equipment in the facility increasing safety and security for staff and inmates.

The Corrections Division has in-

stituted new hiring and promotional standards which consist of a written and physical test, oral interview and a thorough background check of all applicants. These standards were implemented as a result of positive networking with the union in a joint effort to hire qualified staff with sound promotional opportunities for career advancement.

A new six week Training Academy was adopted which consists of each staff member completing training in security operations, customer service, dealing and treating the mental health and substance abuse addicted populations, and the overall commitment of providing a safe, secure, and humane environment

with a variety of services to assist those in detention, whether they are sentenced to our facilities or awaiting transport, trial or sentencing.

Santa Fe County was the first of 33 counties in the State of New Mexico to adopt the Crisis Intervention Training in our Academy with cadets and staff in dealing with inmates who have mental health disorders. This consists of identifying inmates upon Intake who have mental health disorders and properly referring for follow up care in the facility as well as follow up treatment in the community.

Once a cadet has completes the Academy, they participate in an ongoing employee Mentorship program.the correct supervision for his or her job duties.

#### Life Skill Programs Implemented in FY 2013

- Art Class
- Music Appreciation Class
- Creative Writing Class
- Art Appreciation Class
- Job Program (provides inmates with jobs within the facility while incarcerated)
- Created and implemented a Native American sweat lodge
- Created and implemented a portable Legal Library
- Therapeutic programs, such as "Thinking for a Change"
- Parenting classes, which provide inmate with a Life Skills Certificate
- Bible Study
- Alcoholics Anonymous (AA)
- Narcotics Anonymous (NA)

#### Behavioral Health Team

- Treatment therapist provided therapy with an average of 160 inmates per month
- Created a referral process for inmates who need on-going mental health and or mental health therapy with community programs
- Implemented weekly staffing for inmates who have severe special needs to assist with treatment plans and or referrals to other programs within the facility and/or community

## Community Safety

The facility administration implemented a well-trained Crisis Emergency Response Team (CERT) that will respond to any crisis or emergency in the facility. This team has been trained to deal with any facility crisis as well as being equipped with the modern equipment to do so.

Due to the refocused commitment of training, mentoring, and hiring the most qualified staff, our vacancy rate has been reduced.

The Corrections Division experienced a high volume (10,300) of inmate bookings and releases (9,927) in calendar year 2012. Our administration implemented a new booking and inmate triage process which consists of a medical, mental health, substance abuse, and individual case management assessment of each inmate who is booked into the facility. Our professional staff in medical, security, behavioral health and case management screened and triaged each inmate and referred inmates in need of ongoing services to the right department for follow up. Upon release, inmates were referred to available community providers to ensure a true continuum of services, which included Substance Abuse and Mental Health Treatment facilities, as well as to various departments within Children, Youth and Families. These cases involved a formal staffing conducted with the receiving agency to ensure proper information and diagnosis were communicated.

Santa Fe County Corrections implemented several new Life Skill programs, but also worked to provide timely, professional, and comprehensive educational services to better prepare inmates for the job market which, upon release, will reduce the recidivism rate.

Santa Fe County Corrections worked with the community to receive additional educational materials, replenish our inventory of library books and also recruited volunteers to expand volunteer programming.

### Highlighted Adult Correction Facility Accomplishments

- Implementation of a Comprehensive Policy and Procedures Development Program
- Established Foundations for a Case Management Program
- Implementation of an Experience Based Training Academy
- Inmate pay cost savings of \$20,000 by initiating time cards for days worked - Inmates now have timesheets to reflect the hours and days worked to eliminate fraud and waste while paying inmates for their job assignments
- Inmate vacancy rate decreased at the Adult Facility by 8% in 2012
- Reduced Payroll overtime from \$40,000 a month to \$24,000 a month
- Finalized confinement agreements with 28 governmental entities
- Two cadet academies were held graduating 23 detention officers
- Filled 25 Detention Officer vacancies in FY 2013
- On October 22, 2012 the Association of Counties accepted the application for the Santa Fe County Detention Facility for Adult Detention Professional Standards Council accreditation program

### K9 JOINS SANTA FE COUNTY CORRECTIONS TEAM



**S**anta Fe County Corrections Division added a four legged member to the Adult Detention Facility in 2013 — a detection dog. Bixi Von Der Critterden is a 19 month old German Shepherd and American second generation service dog, who now spends her time diligently sniffing for illegal drugs in the Santa Fe County Adult Detention Facility.

Bixi had to complete and pass a pre-test before she was accepted into the K9 training program. Graduation included the completion of the minimum requirements of a K-9 service dog which consisted of 200 hours of K9 Operations. She completed her K9 Training with Kevin Sheldahl, who runs and certifies K9 Services for federal agencies as well as for the New Mexico Department of Corrections. She must have documentation of working a minimum of five hours a day to maintain her performance standards for annual certifications. Bixi is also working to obtain an accreditation from the National Narcotic Detector Dog Association (NNDA), which should be completed within the next year.

### YOUTH DEVELOPMENT PROGRAM (YDP) AND ELECTRONIC MONITORING/BAIL BONDS

- Received \$41,184 in reimbursements by participating in the New Mexico Department of Education Student Nutrition Program
- 3/30/12 – United States Marshals Service Annual Inspections completed
- 11/13/12- Children, Youth and Families Department (CYFD) Annual Recertification Inspection
- The Electronic Monitoring Program moved from the Youth Development Program Facility to a more secure location at the Adult Detention Facility
- Electronic Monitoring increased revenue by \$31,567.49 between 2011 (\$89,556.21) and 2012 (\$121,123.70) as part of an increase in population via court orders into the electronic monitoring program as an alternative to incarceration.

### SANTA FE COUNTY FIRE DEPARTMENT

The Santa Fe County Fire Department's mission is to provide high quality fire, rescue and emergency medical services to the citizens and visitors of Santa Fe County. In order to accomplish this mission the Department utilizes the services of a highly trained combination of paid staff and dedicated volunteers. Formed in 1997 from the consolidation of 15 volunteer fire districts and the former Office of the County Fire Marshal, the Department protects approximately 1900 square miles of unincorporated area as well as the incorporated Town of Edgewood. Within these borders the Department provides protection to approximately 76,000 residents living in 27,500 occupied housing units, as well as several million square feet of commercial development. Santa Fe County is also home to four Pueblos – Nambe, Pojoaque, Tesuque, and San Ildefonso - which rely on the Santa Fe County Fire Department for emergency services.

The Department maintains 32 fire stations countywide including five staffed regional stations and one staffed substation, as well as an extensive inventory of 188 vehicles including fire and EMS response apparatus as well as command and support vehicles.

### HIGHLIGHTED FIRE ACCOMPLISHMENTS FOR 2012

#### Operations and Training Division

- Responded to more than 7100 emergency calls
- Completed one Cadet Academy with seven graduates
- Graduated four career firefighter from the Santa Fe Community College Paramedic Program
- Santa Fe County had three career firefighters graduate in Spring 2013 from the Paramedic training program
- Held two basic auto extrication courses
- Conducted live burn trainings for volunteer districts
- Developed and implemented Aerial Apparatus training for field staff
- Completed two Volunteer Fire Academies, graduating 28 volunteer firefighters
- Developed and delivered "Airway 911" course to each station and every crew, as well as to volunteers
- Held three Emergency Medical Services (EMS) refresher courses and two paramedic refresher courses

#### Administration Division

Improved emergency response fleet by acquiring three pumper fire trucks for Edgewood, Turquoise Trail, and Hondo, one Brush Truck for Madrid, one EMS officer command vehicle, one vermeer chipper for the Wildland Division, make copy all black, one shelter trailer, and one re-furbished Medical Unit

- Additional apparatus ordered and delivered in 2013 include, two Medical Units for Pojoaque and Eldorado, one Tanker for Eldorado, one Pumper for La Cienega, and one Ladder Truck for Pojoaque
- Completed construction of Ranch Viejo Fire Station, relocated crews to new station
- Began construction of one new Fire Station in Edgewood
- Completed re-roof project at La Puebla Fire Station
- Fleet Section completed 20 pump tests, annual hose and ladder testing and more than 600 work orders
- Hosted Regional Insurance Services Organization (ISO) class with NM State Fire Marshal's Office
- Billed 3,460 ambulance accounts resulting in collected revenue of \$884,556
- Completed "Narrow Banding" radio project. The Narrow Banding Project is an FCC mandated program which requires public safety agencies, nation-wide, to replace/re-program communications equipment in order to provide more usable radio frequencies dedicated to public safety



## Community Safety

### Wildland Division

- Conducted 26 Wildland refresher classes, four Basic Wildland Fire-fighter classes, an Intermediate Fire Behavior class, a Pump Operations class and a Chain Saw class
- Conducted 10 community fire prevention meetings
- Conducted two Emergency Management Meetings
- Conducted 12 Firewise Community meetings
- Conducted 56 home assessments for Firewise program. The Firewise program is a program designed to save lives and property from wildfire. The National Fire Protection Association (NFPA's) Firewise Communities program teaches people how to adapt to living with wildfire and encourages neighbors to work together and take action now to prevent losses
- Obtained a Youth Conservation Corps (YCC) grant in the amount of \$147,584 to hire 10 local youths who were trained and utilized in Wildland Fire Fuels Reduction projects and wildland fire scenes in Santa Fe County
- Completed 28 acres of Hazard Fuel Mitigation

### Fire Prevention Division

- Inspected 116 businesses and schools
- Conducted 267 development reviews
- Issued 148 burn permits
- Reviewed 54 lot line Adjustments/Land Divisions/Family Transfers
- 14 Special Use permits and reviews
- 40 Sprinkler/Alarm Plans/Inspections completed
- 17 Movie set reviews and permits issued
- Conducted 70 public education presentations in schools, reaching 2,519 students
- Conducted 22 Work Place Fire Safety trainings
- Attended three career fairs, and participated in six TV and radio interviews
- Inspected and tested more than 2,700 fire hydrants
- Participated in National Dance Institute Officer/Firefighter Dance
- Assisted in the co-ordination of the Walk to Stop DUI event to raise awareness and money for the Pojoaque High School Post Prom Party





### Volunteer Recruitment and Retention Section

- Recruited and approved 134 applications for Volunteer Firefighter positions in all 14 of the County's Fire Districts
- Purchased and distributed to the district volunteers 139 Self-contained Breathing Apparatus from a 2011 NM Fire Protection Grant
- Santa Fe County was awarded a 2012 NM Fire Protection Grant for Personal Protective Equipment for 10 Districts, one Engine, and one Brush Truck for a total of \$412,736 from the State of New Mexico
- Santa Fe County was awarded a Federal Emergency Management Agency (FEMA) Assistance to Firefighters grant for three breathing air compressor stations which will be located at the Pojoaque, Edgewood and Rancho Viejo Fire Stations for a total of \$120,000.
- Held two Volunteer Fire Academies resulting in 28 graduates



### Emergency Management

- Conducted multiple trainings, including: Multi-Casualty Incident Management Training for Northern Region, Decontamination training for hazardous materials response. Training/Lab for Volunteer Fire Academy, Unified Command Table-top exercise for Santa Fe County Sheriff's Department, six Highway Safety Courses for Santa Fe County Sheriff's Department, Active Shooter exercise at St. Vincent's Hospital, two- Incident Command System 100/ National Incident Management System 700 courses for Santa Fe Community College and New Mexico Gas Company., Citizens-Certification course for Santa Fe Community College.
- Completed Narrow Banding project for Santa Fe County Fire, Sheriff and Regional Emergency Communication Center (RECC).
- Exercise Lead/Evaluator for multiple full scale exercises, including: Active Shooter table-top for Santa Fe Public Schools and Los Alamos High School, New Mexico Department of Health exercise, Department of Energy/Office of Secure Transportation exercise, New Mexico Gas Company and the National Guard.
- On scene incident manager for the Santuario de Chimayo Pilgrimage.
- Facilitator for Counter Terrorism Operations Level Radiological/Nuclear course
- Project Lead for Santa Fe County Fire Chemical Biological Radiological Nuclear Explosive and Technical Rescue teams.

### REGIONAL EMERGENCY COMMUNICATION CENTER (RECC) ACCOMPLISHMENTS

The Santa Fe Regional Emergency Communications Center (RECC) has existed since 2002 as the result of a “Joint Powers Agreement” between the City of Santa Fe and Santa Fe County. The RECC receives all police, fire, medical and animal control Emergency 911 calls and non-emergency calls for the City of Santa Fe and Santa Fe County and dispatches the appropriate agency to the location as needed. The Center operates on a 24-hour/7 day a week schedule.

In Fiscal Year 2013 Santa Fe County RECC attained the Accredited Center of Excellence (ACE) award from the International Academies of Emergency Dispatch (IAED) as an Accredited Center of Excellence. RECC worked for over 10 years to attain this goal. This year the Center achieved and maintained compliance levels sufficient to be awarded accreditation from the International Academies of Emergency Dispatch. Only 168 centers throughout the world have achieved this level of proficiency and received this award.

This year RECC also successfully implemented the RECC Academy and training program to improve the level of proficiency among new hires when assigned to the dispatch floor and reduced the training program completion time. The implementation of this academy has also increased participation from existing staff as adjunct instructors and advisors in the program.

#### HIGHLIGHTED ACCOMPLISHMENTS

- Implemented replacement schedules that allow rotation of equipment at a satisfactory rate to prevent hardware or software failure, avoiding costly and inconvenient system downtime. This also has been beneficial to the budget, saving money in unplanned equipment replacement costs.
- Successfully upgraded Reverse 911 system, incorporating and launching the Self Registration Portal for the public of Santa Fe County to provide their non-landline based contact information for emergency notification purposes.

#### RECC 2012 Call Volume

- Total Calls taken by the Center - 413,927
- Total 911 Calls handled - 80,674
- Total Calls for Service (Dispatched) - 191,082

- Started utilizing a new staffing and scheduling software application called Telestaff that assists in payroll tracking, staff overtime, leave tracking and overall staff time management.

---

...upgraded Reverse 911 system, incorporating and launching the Self Registration Portal for the public of Santa Fe County...

---

- Implemented a new employee schedule, that has eased the stress levels among the staff and allowed the center to realize a substantial overtime budget savings.
- Completed implementation of the pilot project for utilization of GPS/AVL systems and the upgrade of our CAD and mapping systems that will improve officer and field unit safety, as well as increase operational efficiency within the Center.

## COMMUNITY INFRASTRUCTURE

### SANTA FE COUNTY WATER UTILITIES

The Water Utilities Division, provides safe and reliable water supply and wastewater management services to customers throughout Santa Fe County in a manner compliant with all applicable regulatory requirements and industry standards, utilizing equitable and reasonable rates.

Annual customer revenues reached \$2.4 million in FY 2012, and increased to approximately \$3 million by 2013 fiscal year's end. This growth is directly related to the expansion of the utility's customer base, which in the period between July 2011 and June 2013 grew from approximately 1,800 residential user equivalents (RUE) to 3,700 RUE's. This growth is indicative of the utility's ability to serve an increasing number of County residents who currently depend on marginal sources of drinking water supply. In FY 2013, the utility began providing wastewater treatment services to the Penitentiary of New Mexico, a single user that represents as many as 220 residential user equivalents. Starting in FY 2014, the utility will replace the penitentiary's existing groundwater supply with regular potable water supply

#### Additional Accomplishments in Fiscal Year 2013

- Santa Fe County provided regulation-compliant, uninterrupted drinking water and fire suppression capabilities for customers, 99.997% of the time in 2012.
- Successful decommissioning of Valle Vista Wastewater Treatment facilities, in full compliance with all applicable regulatory requirements and standards.
- Entered into an agreement with the State of New Mexico, for Santa Fe County Utilities to lease and operate the Quill Raw Water Generation Plant until the year 2035. This plant will be the district facility to serve southernmost portion of the County's Sustainable Development Area (SDA1).
- Expand Santa Fe County Utilities customer base 220 wastewater Residential User Equivalents (RUE's), by including the Penitentiary of New Mexico as a Santa Fe County Utilities customer.
- Initiated design of water facilities that would make Buckman Direct Diversion (BDD) water available in Eldorado/Lamy Junction/Cañoncito area. Project construction is expected to begin in summer of 2013.

services, thus reducing the impact its operation has upon the underlying aquifer.

The County had planned to take all necessary and reasonable steps to include the costs associated with the operation of the Buckman Direct Diversion (BDD) project into

the enterprise's business plan, so that customer revenue will cover all costs, while maintaining the reasonable and fair service rates. In FY 2013, our efforts were successful as we are one fiscal year (instead of two) away from achieving that goal.



Quill Wastewater Treatment Plant Aeration Basins. In 2012, the nearby State Penitentiary became a wastewater customer of the County – served by the Quill Plant.

## POJOAQUE BASIN REGIONAL WATER SYSTEM

The proposed Pojoaque Basin Regional Water System is the primary outcome of a decades-long water rights adjudication known as the “Aamodt case.” The proposed system would serve the Pueblos of Nambé, Pojoaque, San Ildefonso, and Tesuque, and Santa Fe County residents within the Pojoaque Basin. The U.S. Bureau of Reclamation (BOR)

is responsible for overseeing the implementation of this regional water system to serve both Pueblo and non-Pueblo citizens in the Pojoaque Basin’s Aamodt Settlement Area in northern Santa Fe County. Under the Aamodt settlement, Santa Fe County has certain responsibilities associated with providing water service to non-Pueblo citizens. BOR hired a consult-

ant to prepare a federally-required Environmental Impact Statement for the project. Development of the EIS will continue into 2014. The Water Utilities Division established a new position in Fiscal Year 2013 that is primarily dedicated to the coordination of all County actions related to the successful and timely completion of its portion of the project.

## SANTA FE COUNTY SOLID WASTE AND RECYCLING SERVICES

Operates seven Solid Waste Convenience Centers and one recycling drop-off center convenience centers throughout the County for citizens to drop off their refuse and recyclable items. Enforces the Solid Waste Ordinance

(prohibiting illegal dumping), conducts public outreach and education, and administers special clean-up programs and collection events.

### 2012 Transfer Station Tonnages and Cost

Station	Operating Days	Waste MSW (tons)	Number of Customer Visits/Yr	Number of Pulls/Yr	Annual Operating Cost (\$)	Annual <sup>2</sup> Operating Cost/Ton (\$)	Annual Recycled Material (Tons)	Annual Green Waste Landfilled (Tons)	Annual <sup>3</sup> Green Waste Recycled (Tons)	Annual Operating Cost MSW Landfilled GW & Recycling /Ton
Jacona	W,T,F,S,S	3525	17114	523	\$392,109.00	\$111.24	520	1076	312	\$76.57
Eldorado	W,T,F,S,S	2277	25028	127	\$312,042.00	\$137.04	893	691	220	\$80.81
La Cienega	W,T,F,S,S	2031	8581	328	\$285,352.00	\$140.50	133	N/A	N/A	\$90.47
San Marcos	W,F,S,S	739	7611	150	\$188,839.00	\$255.53	152	N/A	N/A	\$211.94
Nambe	W,F,S,S	520	3364	94	\$78,054.00	\$150.10	42	N/A	N/A	\$138.88
Stanley	W,T,F,S,S	609	4172	101	\$146,116.00	\$239.93	81	9.26	16	\$207.25
Tesuque	W,F,S,S	378	5082	179	\$147,677.00	\$188.46	112	N/A	N/A	\$301.38
Rancho Viejo <sup>1</sup> (S only)	FS	N/A	N/A	89	\$19,580.00	\$188.46	104	N/A	N/A	\$188.46

1) Annual operating costs calculated by 89 pulls x \$220.00/pull= \$19,580.00.

2) Annual operating cost/ton includes annual MSW tonnage only.

3) Tonnages are included in the Annual Recycled Material column. Landfilled green waste was not suitable for recycling.



### HIGHLIGHTED - COMPLETED FACILITIES

#### Steve Herrera First Judicial Complex

The new Steve Herrera First Judicial Complex was completed in February of 2013. The 103,000 square foot facility encountered numerous challenges during construction including the removal of 25,000 tons of contaminated soil and over 1,500 gallons of perched gasoline left by leaking tanks at three former gas stations. The Courts moved into the new building in June of 2013. The project is on track for a *Leadership in Energy and Environmental Design* (LEED) Gold designation and by the United States Green



113 kilowatt solar system on the roof of the new Judicial Complex – a LEED Gold green building.” Photo Credit: Eagle’s Eye – Aerial Photo Solutions

Building Council and is just two points short of LEED Platinum, the highest LEED designation possible. Conserva-

tion features include storm water catchment and storage for irrigation, high efficiency heating and cooling, high efficiency water fixtures, green paper products and janitorial supplies and a 113 kilowatt roof-mounted array of photovoltaic solar collectors that can provide up to 20% of the building's total electrical demand.

#### Vista Grande Library Addition

The Vista Grande Library serves the Eldorado, Glorieta, and surrounding area. The library has outgrown its space and requires an expansion to its facility to meet the needs of users and the surrounding community.. Santa Fe County appropriated funding for the building expansion from the County capital Outlay Gross Receipt Tax. The project consists of a 4,000 sq. ft. expansion along with site improvements.

This building addition will accommodate expanding the library collections, book shelf stacks, reference and periodical reading area as well as pro-

viding additional computer stations. Also included in the expansion is a new processing workroom, new office,



showings for the popular “Movie Night” and children’s programs. Support spaces in the expansion include

Vista Grande Library Addition ground breaking.

three new tutoring/small meeting cubicles, a new meeting room (with a separate building entrance) that will allow the use of the meeting room for community meetings as well as for

a kitchenette, store room, restroom data and janitor closets.

Construction of the expansion started in May of 2013.

## Community Infrastructure



Rancho Viejo Fire Station

### RANCHO VIEJO FIRE STATION

Construction of the new Regional Fire Station in the Rancho Viejo area was completed in June of 2012. This station was built to house both career firefighters assigned to the Western Region and the volunteer firefighter/EMT's for the La Cienega Fire District. The Rancho Viejo Station serves the expanding Community College District, the Interstate 25 corridor, and the La Cienega area. In addition to the living quarters, the facility consists of a large meeting room for both career and volunteer staff and three apparatus bays that house Medic 61, a paramedic ambulance, as well as the District's Fire Engine, Water Tender, Rescue truck, and an Aerial fire truck.

### NAMBE SENIOR/COMMUNITY CENTER

The original Nambe Elementary School property is a 0.73 acre tract with two small former school buildings and a parking area. The County renovated the Nambe School for use as a Senior/Community Center. The renovation included electrical, plumbing, HVAC, exterior insulation and window replacement. Additional construction renovations to be complete at this site by the end of 2013 include: renovation of the park facilities on the site and access improvements that will supplement the renovated Center.



Nambe Senior and Community Center Ribbon Cutting Ceremony

### STANLEY WELLNESS CENTER

First phase currently under contract to place a 1,050 square-foot multi-purpose building on the 11 acre site. Site utilities and infrastructure are included in design. Construction began in June, 2013. Phase 1 should be finished in the Fall of 2013.

### RIO EN MEDIO COMMUNITY AND KITCHEN CENTER

The Rio En Medio Senior Center expanded its current kitchen to meet the demands of District 1 senior citizens who receive Meals on Wheels. The kitchen upgrade provides 50 to 60 meals per day and complies with all code and fire safety requirements.

### POJOAQUE SPORTS FIELDS AND PARK IMPROVEMENTS

The Pojoaque Sports Fields is an 11 acre community park off of County Rd 84, northwest of the intersection of US 84 and NM 502. The park is primarily used for youth recreation programs by local little league baseball and youth soccer leagues. The facility is aging and in need of renovation. The County has hired a landscape architect to design improvements to the park.

### MADRID BALLPARK GRANDSTANDS

Madrid was a coal mine company town. The Madrid ballpark was

built by the Madrid Employees Club in 1920 and was the first lighted ballpark in New Mexico and possibly west of the Mississippi River. The grandstand was added in 1928. The WPA constructed the extensive stonework at the ballpark in 1935. The Madrid ballpark was the home of the Madrid Miners, New Mexico's only AA Minor League Team. The County is in the process of renovating the historic grandstands. The renovations will be completed in 2014.

### EDGEWOOD FIRE STATION

The Edgewood Fire Station is currently in construction with substantial completion scheduled for August 2013. The 14,998 square foot facility will accommodate the career and volunteer firefighters and Emergency Medical personnel for the Southern Region of Santa Fe County as well as the Edgewood Fire District, providing coverage for the Town of Edgewood, southern Santa Fe County, and assistance as needed to adjacent jurisdictions. The fire station will provide comfortable accommodations for three different work shifts, including accommodations for volunteer staff, a living room, kitchen, offices, laundry room and outdoor patio spaces. Like the Rancho Viejo station, Edgewood has a training room with exercise and weight lifting equipment, a conference meeting room with a divider that separates the room in half to accommodate multiple meeting requests, offices for staff, and an apparatus bay that houses nine fire and emergency vehicles.

### COMPLETED ROAD PROJECTS

#### County Road 63C - Chip Seal

Roadway widening, placement of four inches of base course, drainage improvements, triple penetration chip seal along with a fog seal on 0.20 miles of road

**Project funding Source:** Capital Outlay Gross Receipts Tax (GRT)

**Project Cost:** \$25,000



Camp Stoney Road

#### Agua Fria Park Road - Base Course

Placement of six inches of base course and soil stabilization on 0.25 miles of road

**Project funding Source:** Capital Outlay GRT

**Project Cost:** \$20,000

#### Entrada La Cienega - Chip Seal

Placement of a single penetration chip seal on top of the existing asphalt surface

**Project funding Source:** Santa Fe County Road Maintenance Budget

**Project Cost:** \$30,000

#### County Road 113S - Low Water Crossing

Placement of a new concrete deck on the existing low water crossing

**Project Cost:** Capital Outlay GRT

**Project Cost:** \$25,000

#### Camp Stoney Road - Chip Seal

Roadway widening, placement of four inches of base course, drainage improvements, double penetration chip seal along with a fog seal on 2.12 miles of road

**Project funding Source:** NMDOT Local Government Road Fund (LGRF) 75%, Santa Fe County 25%

**Project Cost:** \$230,000

#### Las Estrellas Road - Chip Seal

Roadway widening, placement of four inches of base course, drainage improvements, double penetration chip seal along with a fog seal on 1.82 miles of road

**Project funding Source:** NMDOT LGRF 75%, Santa Fe County 25%

**Project Cost:** \$161,000



# GOVERNMENT EFFICIENCY AND TRANSPARENCY

## WEBSITE TRANSPARENCY



The Sunshine Review, a national nonprofit organization dedicated to government transparency, released the winners of the fourth annual Sunny Awards in March and among the 2013 winners was Santa Fe County. The award honors the most transparent government websites in the nation. Santa Fe County received an A+ from the nonprofit organization. Santa Fe County received an A+ and Sunny Award in 2012 from the organization and an A in 2011.

For the 2013 awards, editors at Sunshine Review analyzed more than 1,000 qualifying government websites and graded each on a 10-point transparency checklist. Editors looked at content available on government websites against what should be provided. They sought information on items such as budgets, meetings, lobbying, financial audits, contracts, academic performance, public records and taxes.

View the Santa Fe County Report Card at [http://sunshinereview.org/index.php/Santa\\_Fe\\_County,\\_New\\_Mexico%20](http://sunshinereview.org/index.php/Santa_Fe_County,_New_Mexico%20).

## SANTA FE COUNTY SWITCHED TO .GOV

Santa Fe County has a new Uniform Resource Locator (URL), domain ([www.santafecountynm.gov](http://www.santafecountynm.gov)), and email domain (@santafecountynm.gov). The Board of County Commissioners approved the new URL, domain and email domain at the February 28, 2012 meeting and all necessary changes have been implemented to utilize the new URL, domain and email domain. This change was made to make the Santa Fe County domain consistent with other government agencies.

## ONLINE COMMENT FORM

Santa Fe County launched a new online comment form for residents. The new form was developed to be quick and easy to fill out. The tool allows residents the opportunity to leave their contact information so staff can follow through with them or bypass the contact information fields by simply clicking an anonymous button. The form is a great tool for residents to provide feedback and ideas to Santa Fe County.

The new online comment form can be found at [www.santafecountynm.gov/contact\\_us/public\\_comment\\_form](http://www.santafecountynm.gov/contact_us/public_comment_form) or by selecting “Public Comment Form” from the Quicklinks dropdown menu on the homepage [www.santafecountynm.gov](http://www.santafecountynm.gov).

### YourGov Mobile

Santa Fe County Public Works Department implemented an online system called CarteGraph for residents to submit work orders on any routine road maintenance concerns in their area on County maintained roads. The mobile version of CarteGraph called YourGov is available to download for iPhones and Android devices to make submitting those concerns even easier!

## Santa Fe County Website Goes Mobile

In 2013 Santa Fe County created a mobile website for individuals who access information on devices such as smart phones and tablets.



### HUMAN RESOURCES

#### Highlighted Accomplishments

- Successfully negotiated International Association of Fire Fighters( IAFF) Union Contract
- Successfully negotiated the financial re-openers for Communication Workers of America Regional Emergency Communication Center (RECC) Union
- Successfully negotiated the financial re-openers for Communication Workers of America - Sheriff Union
- Successfully negotiated the financial re-openers for Communication Workers of America - Corrections Union
- Successfully negotiated the financial re-openers for American Federation of State, County and Municipal Employees (AFSCME )
- All successful financial re-openers resulted in temporary retention increases, 1% cost of living adjustments, additional personal holidays for Fiscal Year 2012, and an increase in the amount Santa Fe County contributes to employees' medical insurance coverage for employees who earn \$30,000 annually or less
- Increased the amount of tuition assistance granted to employees by approximately 154% from Fiscal Year 2011 to Fiscal Year 2012 and increased the amount of employees assisted by approximately 100% from Fiscal Year 2011 to Fiscal Year 2012.
- Provided 156 non-supervisory training sessions and 24 supervisory training sessions for Fiscal Year 2012

#### Human Resources Highlighted Employee Recruitment Efforts

- The Santa Fe County Human Resources Division in collaboration with the Public Safety Department and Sheriff's Office, hosted a Public Safety Recruitment Day on Saturday, August 11, 2012 at the Santa Fe County Fairgrounds. The Recruitment Day was an opportunity for individuals to obtain information from Public Safety staff to see if they have what it takes to be a part of the Public Safety team, by asking questions, taking mock tests and participating in physical agility testing.
- Mini Job Fair on September 15, 2012 at the Eldorado Community Center (Fall Flea Market)
- Mini Job Fair on September 15, 2012 at the Nambe Community and Senior Center
- Updated the online Job Application
- Post vacant job positions on the Santa Fe County Facebook and Twitter



Human Resources staff at the Mini Job Fair on September 15, 2012 at the Nambe Community and Senior Center

### BUDGET AND FINANCIAL INFORMATION

#### AUDIT

Santa Fe County has proudly maintained an unqualified or “clean” opinion for its audit for the past 15 years. County staff strives to reduce existing audit findings and minimize new findings. The County eliminated four findings during the Fiscal Year 2012 financial audit and gained two new findings. The new findings were corrected from a policy and procedure standpoint before the audit was finalized, and should be eliminated during the next audit cycle. The County will submit the Fiscal Year 2012 Comprehensive Annual Financial Report (CAFR) to the Government Finance Officers Association (GFOA) for review and possible award.

#### Performance-Based Budgeting

Fiscal Year 2013 marks the first year the County's budget was developed using a results-accountable, priority-driven budget methodology

## Government Efficiency and Transparency

(referred to generically as performance-based budgeting). Staff was trained in the concepts of performance management and an “end-result” way of planning.

Staff was asked to identify the four primary functions for which each organizational unit is responsible and what the desired outcome of that function is. Performance measures were established by asking three questions: how much did we do (outputs), how well did we do it (efficiency) and how are our customers, the taxpaying public, made better off? In addition to performance measures, major accomplishments of Fiscal Year 2012 and goals for Fiscal Years 2013 and 2014 were also provided. The functions, ac-

complishments and goals all tie, directly or indirectly, to at least one of the County’s seven key areas of focus as well as one (or more) citizen priority and/or one (or more) Commission priority.

In stark contrast to the past three fiscal years, budget cuts were not required. In fact, staff was instructed to build their budget requests in such a manner as to fund each function adequately to achieve the function’s desired outcome even if it resulted in an increase to their budget. Also, for the first time in three fiscal years, requests for new positions were approved as needed to accomplish functional goals.

The budget process culminated

with a prudent financial plan for accomplishing organizational outcomes for Fiscal Year 2013. This plan contemplates modest increases to some revenue sources, some revenue dependent increases to staffing, significant one-time expenditures for large maintenance and repair items and significant asset renewal and replacement expenditures and provides Departments with the resources that they need to achieve the desired outcomes of their functions.

To view the Santa Fe County budget, presentations, monthly cash flow analysis, Auditor reports and more, visit [www.santafecountynm.gov](http://www.santafecountynm.gov).

### GENERAL OBLIGATION BONDS AND FIRE EXCISE TAX APPROVED BY VOTERS

#### GENERAL OBLIGATION BONDS

On July 31, 2012 the Santa Fe County Board of County Commissioners (BCC) adopted Resolution 2012-89 directing that three Bond Questions be presented to Santa Fe County voters as part of the November 6, 2012 General Election. The voters approved three Bond Questions that asked County voters if they would like to fund up to \$35 million for capital infrastructure projects in

the following areas: roads, water and wastewater, and open space, trails, and parks. Voter approval of the bonds is not expected to significantly impact County property tax rates because previous bonds are being paid off.

#### Bond Breakdown

- Roads: \$19 million - to acquire, construct, design, equip and improve roads within the County
- Water and Wastewater: \$10 mil-

lion - to acquire real property and necessary water rights for, and to construct, design, equip, rehabilitate, and improve water and wastewater projects within the County

- Open Space, Trails, and Parks: \$6 million - to acquire, design, construct, improve, equip, and restore open space, trails and parks within the County

### FIRE EXCISE TAX

Voters who reside in the unincorporated areas of Santa Fe County voted to approve the renewal of the County Fire Protection Excise Tax on November 6, 2012. The one quarter of one percent (0.25%) gross receipts tax is imposed on all non-medical and non-food items purchased in the unincorporated areas of Santa Fe County.

The Fire Excise Tax was put forward for the purpose of financing the operations, capital outlay and ambulance expenses of the Santa Fe County Fire Department. The tax will cover essential maintenance and improvements to the Department's 32 fire stations, as well as to fund the purchase of replacement fire trucks, ambulances, firefighting and medical equipment, and protective gear for volunteer and career firefighters and paramedics. The tax was originally imposed in the 1980's and served for 25 years as an essential funding source used by the Santa Fe County Fire Department and the department's 14 volunteer fire districts. It expired in 2008 and in order to be reinstated required the approval of voters in unincorporated Santa Fe County.

It is estimated that the tax will generate \$1.24 million annually to help fund the critical needs of the County Fire Department. All of the revenue from the tax is retained locally.

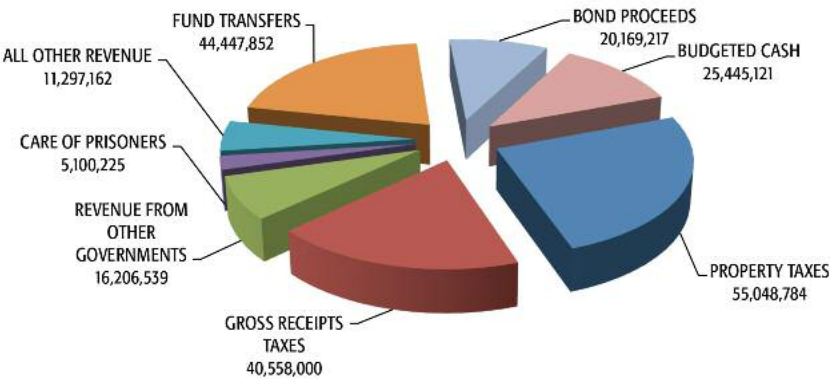
### BOND RATING

Santa Fe County is proud to have assigned ratings of "AA+" and "AAA" by Standard & Poor's and Moody's, respectively in calendar year 2012. The County continues to maintain favorable ratings due to solid financial operations and strong reserves. These high bond ratings lower the County's cost of borrowing money, thereby reducing the overall costs associated with capital improvement projects. The Board of County Commissioners and County management continue to maintain the state-mandated level of reserves and the additional Board of County Commissioners (BCC) mandated budget contingency reserve in these difficult times.

The County's major revenues are property taxes and gross receipt taxes, and during the economic downturn, the County managed its budgets through reductions and judicious use of cash. Doing so enabled the County to maintain programmatic service delivery while keeping a balanced budget. As revenues have begun to rebound slightly, budgets have increased slightly as well to allow for growth in various priority programs. The voters approved the County's General Obligation Bond questions at the November general election for a total of \$35 million. The bonds will be sold in two series and capital infrastructure projects for roads, water and wastewater, and open space, trails and parks will begin in July 2013.

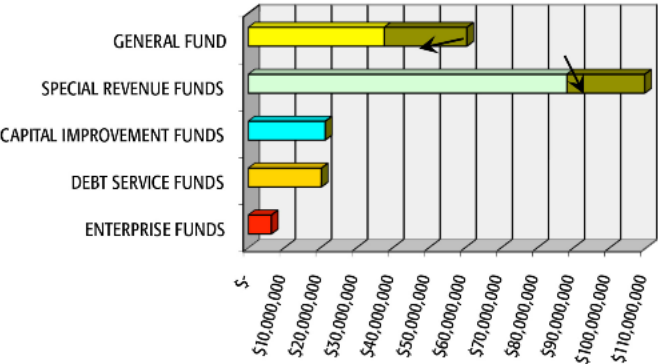
The Board of County Commissioners (BCC) and County management continue to enhance the capital program to provide for steady staffing and work flow, provide work for contractors and issue bonds on a schedule that supports internal capacity to manage projects as well as the issuance of bonds with minimal impact to property tax rates.

**Santa Fe County**  
**FY 2012 Total Budget Sources**  
**\$218,272,900**



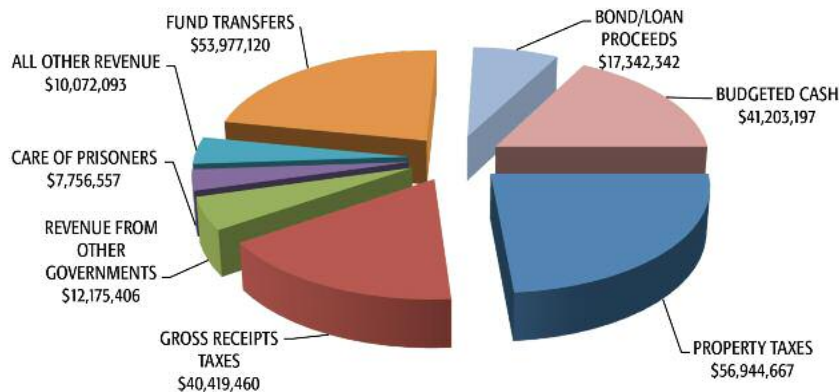
**Uses by Function**

**Santa Fe County 2012 Fund**  
**\$218,272,900**



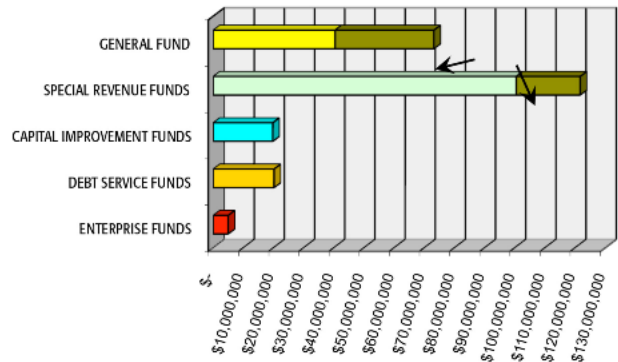


**Santa Fe County**  
**FY 2013 Total Budget Sources**  
**\$239,890,842**



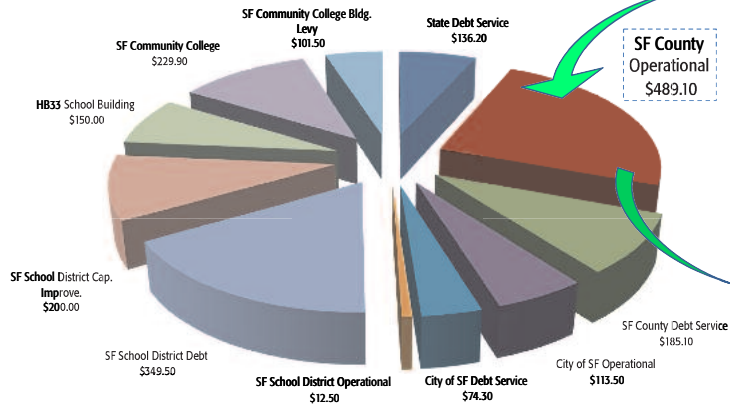
**Uses by Category**

**Santa Fe County 2013 Fund**  
**\$218,272,900**



# Government Efficiency and Transparency

## Where Do My Property Taxes Go?



Based on a home with a value of \$300,000 (market)/  
\$100,000 (taxable) located in the City of Santa Fe with  
a total tax rate of \$20.416 per \$1,000 of taxable value.

Total Property Tax Bill \$2,041.60

