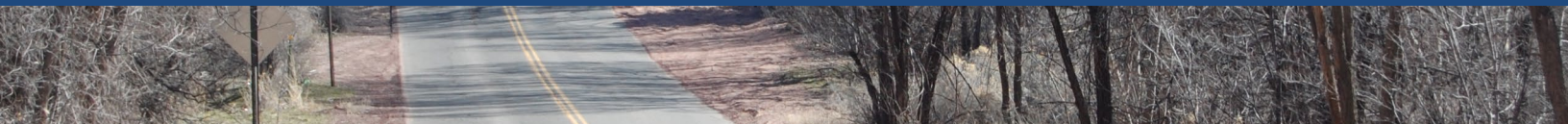


Santa Fe County
Annual Report
Calendar Year
2013



County Commisioners



Daniel "Danny" Mayfield
Distric 1
dmayfield@santafecountynm.gov



Miguel Chavez
Distric 2
mchavez@santafecountynm.gov



Robert A. Anaya
Distric 3
ranaya@santafecountynm.gov



Kathy Holian
Distric 4
kholian@santafecountynm.gov



Liz Stefanics
Distric 5
lstefanics@santafecountynm.gov

Letter From the Commission Chair, Daniel Mayfield

Dear Santa Fe County residents:

On behalf of the Board of County Commissioners (BCC) I am pleased to present our county's first calendar year Annual Report. The Annual Report is a glimpse into the daily operations of Santa Fe County, by highlighting a few select accomplishments. In 2013 many accomplishments were noteworthy in particular the approval of the Sustainable Land Development Code, completion of a community survey, construction of new solar projects, the expansion of our senior services and continued efforts to improve county government transparency.

The Santa Fe Board of County Commissioners unanimously approved Ordinance 2013-6, which adopted the Sustainable Land Development Code (SLDC) at the December 10, 2013 Board meeting. Currently, Santa Fe County is working on the public process element of the Zoning Map, which will be presented to the BCC mid 2014. The Sustainable Land Development Code will not become effective until after the County Zoning Map is adopted.

Santa Fe County has made vast improvements in transparency over the last few years. Commission meetings are broadcast live on the website www.santafecountynm.gov, Comcast Ch. 28 and on Que Suave AM 810. Santa Fe County also sends out a meeting summary

The Tesuque
Fire Station
solarization
project has
served as
a model
renewable
energy initiative
and led to
another solar
project at
the Chimayo
Fire Station
in 2014.

after each meeting as a quick reference for residents. For several years, in addition to broadcasting meetings, agendas and packet material (when available) is posted on the County website for County committees as well as committees Commissioners participate in. Santa Fe County is a multiyear recipient of the Sunshine Award (Website Transparency Efforts) and received an A+ for the final year of the awards, which was 2013. Santa Fe County continues to work diligently to ensure that we achieve the highest level of transparency in county government and community outreach. In 2013 the Citizens Survey was sent to randomly selected County households located in unincorporated areas of Santa Fe County, which focused on the quality and usefulness of Santa Fe County services.

Along with transparency, Santa Fe County has been making great strides in solar power and energy efficiency. In 2013 the Tesuque Fire Station became the first fire station in Santa Fe County to be powered by the sun. The project, which boasts a 6.1 kilowatt solar system, was funded by Commission District 1 funds along with funds from the nonprofit New Energy Economy as part of its "Sol not Coal" campaign. The Tesuque Fire Station solarization project has served as a model renewable energy initiative and led to another solar project at the Chimayo Fire Station in 2014.

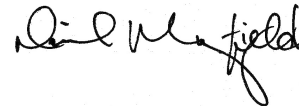
Additionally, the new Steve Herrera First Judicial Courthouse also has solar panels on the roof that help offset electricity costs and is seeking LEED Gold certification. Santa Fe has other County buildings with energy efficient technology and solar technology including the Public Works Facility. One area of significant note is the unanimous passage of Santa Fe County Resolution 2013-7, a Resolution adopting Sustainable Resource Management Principles and directing staff to "Lead By Example" with respect to implementing cost-effective waste reduction, recycling and clean energy strategies in County operations.

Santa Fe County worked diligently over the past year to expand our

Senior Services, including the expansion of home delivered meals, food commodity distribution and a new monthly newsletter that is available to program participants and the public. In 2013 Santa Fe County increased home delivery services by approximately 20 percent. We added the Rufina meal site, which provides congregate and home delivered meals. Santa Fe County also started food commodity distribution as part of their home delivery bringing fresh vegetables like cabbage, squash, cucumbers, tomatoes and more to seniors. One of the favorite changes amongst the seniors in 2013 was the addition of a monthly newsletter. The newsletter showcases monthly activities,

while announcing monthly events and activities.

I hope you enjoy reading about more of our accomplishments and enjoy the 2013 Annual Report. We look forward to completing more great projects in 2014. As always we encourage residents to contact us and let us know how we are doing and where we can improve.



Chair, Daniel Mayfield

CONTENTS

A Healthy Community

1

A Safe Community

9

A Sustainable Community

22

A Growing Community

28

A Proficient and Transparent Community

35





A Healthy Community



A Healthy Community

Health Care Assistance Program

The Health Care Assistance Program provides financial assistance toward health care costs of County residents without adequate funds. The program is administered by the Board of County Commissioners in its capacity as the Indigent Hospital and Health Care Board funded by the County's gross receipts tax.

In 2013, the program processed 8,914 approved claims of County residents, for close to \$6.2 million. These claims covered care provided by clinics, substance abuse treatment providers, ambulance services, and mental health providers with Santa Fe County. Claims also covered care provided by CHRISTUS St. Vincent and hospitals in Espanola, Los Alamos and Albuquerque.

Through the Health Care Assistance Program Santa Fe County paid for the cremation of 38 indigent and/or unclaimed County residents in 2013.

This program is expected to undergo significant changes in 2014 as a result of State Statute changes and the Affordable Health Care Act.

"We are proud of developing relationships with partners like CHRISTUS, the City, the Department of Health, La Familia and so many others who help make our community healthier, and more engaged," said Patricia Boies, Community Services Department.

Mobile Health Van

The Santa Fe County Mobile Health Van travels throughout the County, providing free health services including blood pressure screening, glucose checks, cholesterol tests, body-mass index (BMI) tests, and oxygen assessments. Nurses also provide health information, in both

English and Spanish and refer people to health care providers, including primary care, behavioral health, and dental providers. In 2013 the Mobile Health Van expanded services to include weekends.

In 2013, the Community Services Department hired a full-time community health nurse and began outreach and collaboration with new locations, including partnering with the Interfaith Community Shelter, Santa Fe Community College, Zona del Sol, and the Turquoise Trail Fire Station. This is in addition to frequent visits to all the Santa Fe County senior centers in El Rancho, Chimayo, Edgewood, Eldorado, and Santa Cruz, and to local churches and community events and gathering places. These preventive efforts, as well as new approaches to using the van, will lead to reaching more of the underserved in Santa Fe County.

For more on the Mobile Health Van visit www.santafecountynm.gov » Community Services » Health and Human Services Division » Santa Fe County Mobile Health Van.

Total visitors	2,010
Blood pressure checks	2,006
Blood glucose checks	1,807
Referrals to providers/agencies	396
Discount prescription drug cards	521



Clinics and Classes

Free Flu Shot Clinics

Santa Fe County partnered with the New Mexico Department of Health to hold community based flu clinics in 2013. Over 500 flu shots were administered at a dozen different locations: including Edgewood, Turquoise Trail Fire Station, Nambe, Chimayo, Santa Cruz, Eldorado and others. In addition to the community based flu clinics, the Santa Fe County Senior Services hosted three free flu shots clinics around Santa Fe County for Seniors in October 2013. The clinics were held at Senior Centers in Eldorado,

Edgewood and Nambe. The New Mexico Department of Health provided Santa Fe County with 300 vaccinations for the free clinics. The free flu shots were distributed on a first come, first serve basis.

Free Pneumonia Vaccination Clinic

The County Health Division hosted a free Pneumonia vaccination clinic on Wednesday, March 20, 2013 at the Santa Fe County Nambe Senior and Community Center.

The clinic was sponsored by Santa Fe County Health Division and Presbyterian Espanola Hospital.

Free weekly Type 2 Diabetes Prevention Classes

Free weekly classes were held beginning January 15, 2013 to help residents learn more about preventing Type 2 Diabetes and what they can do to reduce their risk of Type 2 Diabetes by making lifestyle changes.

The free weekly classes were held in Espanola with transportation from the Santa Fe County Senior Program. Diabetes prevention programming is based on the National Diabetes Prevention Program model.

Santa Fe County in 2013: A Community Health Profile

The Santa Fe County Health Policy and Planning Commission, as part of its mandate from the Santa Fe County Board of County Commissioners, finalized ***Santa Fe County in 2013: A Community Health Profile***. The HPPC partnered with CHRISTUS St. Vincent Regional Medical Center to complete the profile, which provides in-depth information about the health of County residents. The report provides data on a variety of health indicators and is being used by Santa Fe County to develop health priorities and by various government and private entities in their own planning and grant seeking activities.

to view the Community Health Profile visit www.santafecountynm.gov » Community Services » Health and Human Services Division.

Health Action Plan

In June of 2013 the Santa Fe County Community Services Department held a Provider Forum at the Santa Fe Community College in order to gather community based input into our planning process. The Community Services Department is in the process of finalizing its Health Action Plan which will be used to guide both the County and the community in developing and funding evidence based strategies to improve health conditions.

Food Depot Food Drive

The Food Depot recently acknowledged the efforts of Santa Fe County staff for hosting a Thanksgiving food drive. The Santa Fe County food drive collected 1,013 pounds of assorted nonperishable food and \$195 in monetary donations. Each dollar donated buys three pounds of food through the depot, so the monetary

donation equaled 1,598 pounds of food, providing 2,131 meals for hungry people in Northern New Mexico. The Food drive was organized and coordinated through the Santa Fe County Community Services Department.

Got Drugs?
Turn in unused or expired
medication for safe disposal



Health Care Reform

Santa Fe County has worked actively with our community based partners in 2013 to implement the Affordable Care Act in New Mexico. The Community Services Department developed and distributed materials providing guidance to Santa Fe County residents on contacts and procedures to access health care coverage through either the Health Care Exchange or Medicaid. In addition, the Community Services Department contracted with La Familia to do outreach and health care enrollment in rural areas of the County. Community Services also applied for and received funding to do radio Public Service Announcements about enrollment in early 2014. Four Community Services Department staff were trained to do Medicaid enrollment including the expanded coverage.

Reducing Drug Addiction in Santa Fe County

TREATMENT: The County released a Request for Proposals to hire a contractor who would develop a comprehensive behavioral health program that would reduce opiate addiction in Santa Fe County, with a specific emphasis on pregnant women. In 2013 the Community Services Department contract-

ed with La Familia for a total of \$120,000 to develop a treatment program for pregnant women who are addicted to opiates.

The program was based on both anecdotal and other evidence

indicating a significant increase in babies born with neonatal withdrawal symptoms. La Familia is also tasked with developing a public awareness campaign to increase the number of pregnant addicted mothers getting prenatal care.

LEADERSHIP: Santa Fe County has been partnering with Santa Fe Public School and the New Mexico Department of Health to organize and lead Santa Fe Opiate Safe (SOS). SOS is a community based group of providers, advocates, law enforcement representatives and government agencies who meet monthly to coordinate activities to address opiate addiction on the local level.

PREVENTION: In 2013 Santa Fe County residents emptied their medicine cabinets of over 500 pounds of unused, unwanted and expired prescription medications during two special Drug Take Back days. The Community Services Department partnered with the Drug Enforcement Administration to coordinate events in April and in October of 2013. Officers from the Santa Fe County Sheriff's Office, the Santa Fe Police Department, Edgewood Police and the New Mexico State Police collected drugs at six locations around Santa Fe County. Permanent sites for take back activities are planned in 2014.

Teen Court Provides \$110,000 for Summer Programs

Teen Court of Santa Fe County provided funding to seven organizations for summer educational and recreational programs in 2013. The intention of the funding is to assist with the development and administering of summer programs designed to serve the youth of Santa Fe County. In total \$110,000 were appropriated by the Board of County Commission. In order to support multiple organizations, each grant award was limited to a maximum of \$20,000 per applicant. The organizations funded served youth from kindergarten to 12th grade and were asked to integrate evidence based or promising practices into programming to increase the health and overall social well-being of Santa Fe County youth. The organizations funded in 2013 include: Agua Fria Elementary School, Rio Grande Educational Collaborative, Pomegranate Studios, Santa Fe Boys and Girls Club, Pojoaque Valley Schools, Wildlife West Nature Park, Espanola Family YMCA.

Senior Services

The Santa Fe County Senior Program continued to thrive in 2013. Residents throughout the County are hearing about the fabulous services provided to seniors in our community. This dedicated staff continues to go above and beyond to provide services to our seniors.

Our senior centers, located in the communities of Chimayo, Edgewood, El Rancho, Eldorado, Rio en Medio, Santa Cruz, and the Traditional Agua Fria Village serve congregate meals to all seniors. These meals are prepared on-site daily using fresh ingredients. Home Delivered Meal recipients also receive hot meals delivered

"We take great pride in the service we provide and the food we serve, the food we prepare for the Seniors is getting fresher and better all the time," Greg Smith, Senior Services



directly to their door. The Senior Services Division also provides transportation services to seniors who need rides to the grocery store or to medical appointments.

Statistics for Santa Fe County Senior Services Program for 2013

- 31,702 home delivered meals provided to 196 eligible participants
- 29,666 congregate meals to 843 eligible participants
- 8,144 one-way trips for medical appointments, grocery shopping, personal care needs, to/from congregate meal sites and County sponsored trips.



Expanded Services

Casa Rufina

In 2013 the Senior Services program opened a new meal site at Casa Rufina Apartment Complex in the Traditional Agua Fria Village. The new site has been extremely successful. The opening of the facility has allowed us to provide services to 87 individuals, with a total of 2,020 congregate meals and 4,025 home delivered meals in a six month period.

Senior Voice, Monthly Newsletter

Seniors throughout the County are provided information on upcoming events, monthly menus, and pertinent information through Santa Fe



County's Senior Voice. The Senior Voice was first printed in February 2013 and quickly became popular with our seniors. The Senior Voice is printed monthly and distributed to seniors throughout our program. A separate page is designated for each center, and upcoming events are highlighted. Also highlighted in the Senior Voice are photos of seniors participating in County sponsored trips.

Senior Activities

Seniors continue to enjoy the variety of activities offered at each of our facilities as well as off site trips to various events around New Mexico. These events allow seniors the opportunity to socialize, participate in exercise programs and explore New Mexico on one of our many trips. Seniors enjoyed pumpkin picking at McCall's Pumpkin Patch, The International Balloon Fiesta in Albuquerque and many other trips around our beautiful state.





Santa Fe County Fair

Santa Fe County Fair is overseen by the Fair Association/Fair Board for the purpose of promoting the development of youth, agriculture, home economics, creative art skills and such activities of interest in Santa Fe County. County Staff works closely with the Fair Board, Superintendents, and New Mexico State University Extension Staff to ensure preparation for events is complete. The County Fair is usually held during the first week in August. After the County Fair, several families travel to State Fairs in Albuquerque (held in September) and Roswell (held in October) representing Santa Fe County. The 2013 County Fair was well represented in both livestock and indoor projects. Livestock (Horse, Cattle, Pig, Sheep, Goat, Poultry, and Rabbit) had 212 entries shown by 103 exhibitors. 4-H indoor had 315 entries by 52 exhibitors. Open indoor youth had 201 entries by 38 exhibitors. Open indoor adult had 236 entries by 182 exhibitors.

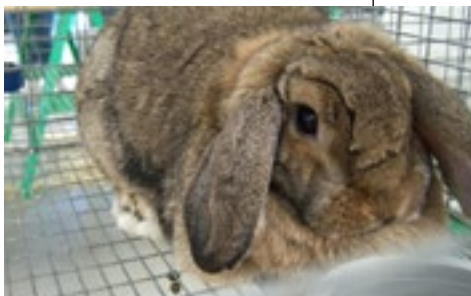
Fair Grounds/ Extension Office

Santa Fe County continues to provide financial support to the New Mexico State University Cooperative Extension Service in a three-way partnership with the State and Federal government in order

to provide services from the Land Grant University to the citizens of Santa Fe County that enhance their quality of life. These services include unbiased, research-based information in the areas of agriculture, home economics, 4-H and youth development. The Santa Fe County Extension Service also plays a vital role in working with Santa Fe County Fair Board to plan and execute the annual County Fair.

Agriculture

In 2013, the Santa Fe Master Gardeners provided 8504 hours of volunteer service valued at



\$188,278*. Through the agricultural program, farmers and ranchers are assisted with diagnosis of production challenges, whether crop or livestock related, and developing solutions to help them keep production costs down while improving their profit margins. Overall more than 6340 contacts were made relative to agriculture, horticulture and natural resource management spanning from the northern areas of Santa Cruz and Chimayo all the way to Stanley and Edgewood.

Home Economics

One of the major programs in the Home Economics area is the "I CAN" program, which stands for "Ideas for Cooking and Nutrition". The mission is to reduce nutritional health disparities in New Mexico and make a measurable positive

impact on the well-being of our communities by facilitating series of research-based, hands-on nutrition experiences with adults and youth. In 2013, we had 194 adult graduates and 556 youth graduates in this program. Through our Home Economist Extension programs, we had 2177 volunteer hours performed in Santa Fe County in 2013 valued at \$48,198.78*.

4-H and Youth Development

Santa Fe County 4-H is the program for all youth development programs conducted through NMSU's Cooperative Extension Service. Teaching

youth life skills such as communication, decision-making, responsibility and service through specific project and program content such as animal science, engineering science, home economics, and personal growth and development enables

youth to become productive and successful citizens. The community club program is our most comprehensive delivery mode; encompassing clubs from Edgewood, Eldorado, Pojoaque, Santa Fe and Stanley. Youth may choose from over 100 projects offered through this delivery mode. In 2013, 2,248 youth were serving through the three program delivery modes: community clubs, special interest and school enrichment programs. The total contacts reached by the 4-H program in 2013 were 21,865. 4-H volunteers 2013 gave almost 49,441 hours of their time, equating to a value of \$1,094,623.74*.

*Value is based on the Independent Sector index of \$22.14



Santa Fe County Housing Authority Scores 97% on Efficiency Assessment

Every two years, the Housing Authority is required to complete a process that determines the efficiency with which the Housing Choice Voucher or Section-Eight Program is administered at Santa Fe County. This assessment is important in communicating to the federal government how well this program is working for families who participate in our Section-Eight housing program. There are 15 key indicators that are measured and scored for an overall value. As a result of this process, the Santa Fe County Housing Authority scored a 97% out of a possible 100%. This score affirms that the Housing Authority is a High Performing organization providing a high level of service to families who participate in this program. This high score is a reflection of the quality of work that the staff at the housing authority perform on a daily basis.

Housing Occupancy Hits 100%

The Public Housing reached 100% occupancy for public housing in March 2013. The Santa Fe County Housing Authority staff was successful in achieving a 100% occupancy rate for public housing.

The Joshua Tree Project

During the Holiday Season through the Joshua Tree Project, the Housing Authority was able to provide over 200 Christmas gifts to children living in three public housing sites in Santa Fe County. This county-wide effort includes the generosity of over 200 county employees donating gifts to help brighten the Holiday Season for the children who receive these gifts at this special time of year. Housing Authority staff sets up Christmas trees at various County buildings with tags including a child's age and gender, County staff picks tags and returns the tag with a gift.

Holiday Gift Baskets

During the Holiday Season the Housing Authority was able to provide 28 gift baskets for Seniors and Special Needs families living in three public housing sites in Santa Fe County. These gift baskets included fruit, nuts, candy, coffee, jam along with a coffee mug and kitchen towel. This effort is supported by Secret Santas who in some cases make anonymous donations that allow the Housing Authority to provide these baskets to families in our program.



A Safe Community

A Safe Community

Santa Fe County DWI Program

The purpose and objective of the Santa Fe County DWI Program is to reduce impaired driving, DWI crashes, and alcohol related fatalities. The Santa Fe County DWI Program develops, implements and sustains programs and initiatives to mitigate the horrible consequences of driving while impaired. The Program works to increase personal and public safety by preventing or reducing the incidence of DWI, DWI related crashes and fatalities, alcoholism, and alcohol and other drug abuse.

Santa Fe County closed 2013 with six alcohol involved fatalities, which represented 66 percent of all crash deaths in Santa Fe County. This is down from seven in 2012. There were a total of 106 alcohol involved crashes, down from 128 in 2012. The number of DWI arrests decreased from 820 in 2012 to 781 in 2013, a five percent decrease. Overall 504 vehicles were seized, 50 of them by the Santa Fe County Sheriff's Department.

For more on Santa Fe County DWI Program visit www.santafecountynm.gov » Community Services » DWI Program.

"Santa Fe County paid for over 12,000 cab rides home last year, keeping drunk drivers off the roads in our community,"
Lupe A. Sanchez,
DWI Planning Coordinator



Public Awareness

In 2013 the Santa Fe County DWI Program launched two public awareness campaigns, Who's Picking You Up Tonight and At .08 We Incarcerate. Both campaigns featured purchased and earned media that highlighted the increasing

threat of arrest by law enforcement for driving drunk and the safer option of a Cab Ride Home. Advertising appeared in the Santa Fe New Mexican, Santa Fe Reporter, the Nightlife Guide and the Restaurant Guide, The Santa Fe Bandstand program guide, AHA Festival Guide, and other high-visibility and high traffic areas. Radio commercials ran on several Santa Fe County radio stations. Public transportation buses also spread the word. King Kong wraps adorned the sides of buses with the message in both English and Spanish, and over 25,000 coasters were delivered in 2013 to more than 30 bars throughout Santa Fe with the message to not drive drunk but to take a reduced rate cab ride home.

Nearly 12,800 People Used the Cab Ride Home Program in 2013

The Cab Ride Home is provided as a public service on Friday and Saturday nights, as well as some holidays nights because crash and arrest data show this is when more drunk drivers are on the road. During 2013, a study of the pilot program determined that there was a slight reduction in ridership but an increase in the most important ride, the ride home after drinking. The study recommended increasing the price patrons pay from \$1 to \$5 per cab for one or two riders and \$10 per cab for three or more.



Hundreds Take Santa Fe County Cab Ride Home on New Year's Eve

The Santa Fe County DWI Program Cab Ride Home was very popular and very busy. New Year's Eve 2013, 269 people took 147 cab rides home. On an average night during July through December, 223 people took rides home from 124 cab rides. The Cab Ride Service was expanded to include New Year's Eve.



Enforcement

In 2013 the Santa Fe County Board of County Commissioners passed Ordinance 2013-5 that modified the existing vehicle seizure ordinance to take and sell vehicles driven by drunk drivers who have been convicted of drunk driving at least once before. In response, the DWI Program obtained funding from the New Mexico Traffic Safety Division for a clerk's position in the Santa Fe County Sheriff's Department to process seized vehicles for sale at auction. In 2013 the Sheriff's Office seized 50 vehicles from DWI offenders.

The DWI Program also hosted monthly meetings with seven law enforcement agencies, the District Attorney's Office, the Attorney General Special Traffic Prosecutor and other concerned groups. These meetings have increased cooperation which means more checkpoints, saturation patrols and a more coordinated attack on drunk driving.

Walk to Stop DUI (5K Walk)

The Walk to Stop DUI is a non-competitive 5K event hosted and sponsored by the Santa Fe County DWI Program, Santa Fe County Fire Prevention Division and many community partners to raise awareness and money to host a drug and alcohol free Post Prom Party for the Pojoaque High School 2013 Senior Prom. The 5K event was held on April 6, 2013. The course started and ended at the Buffalo Thunder Resort.



Prevention in Schools

In 2013 Santa Fe County DWI Program prevention staff and contractors provided drug and alcohol prevention services to more than 12,000 students in 29 public and private schools in Santa Fe County. Prevention staff also had direct face to face contact with more than 5,000 people during community outreach events like the Santa Fe Bandstand and community health fairs. Anti-DWI and drug abuse messages were delivered as well as collateral material to support the message.

DWI Compliance Monitoring and Tracking program

The DWI Compliance Monitoring and Tracking section of the DWI Program screened 365 DWI offenders referred by District, Magistrate, Metro and Municipal Courts in 2013. A majority, 334 of these offenders, were convicted in Magistrate Court. A total of 1,055 DWI offenders were supervised by Compliance staff in 2013 to ensure they completed court ordered requirements.

Santa Fe County Teen Court

Teen Court of Santa Fe County supports the philosophy of breaking the cycle of behavior leading to criminal activity to keep teens out of Children's Court and the Youth Detention Center. Designed for first time offenders, Teen Court offers alternative sentencing and is run for teens by teens, including volunteer Teen Attorneys. Teens are referred from Municipal and Magistrate Courts as well as the Juvenile Probation and Parole Office and Santa Fe Public Schools.

In 2013 Teen Court received 511 referrals and 369 cases were heard and sentenced at District Court. Teen Court defendants completed 8,897 hours of community service at local non-profit organizations and served 1165 jury duties throughout the year. Teen Court staff completed 318 drug and alcohol assessments and monitored an average of 337 cases.

For more on Teen Court visit www.santafecountynm.gov » Community Services » Teen Court

Teen Court Mural Program

This year the focus of the Teen Court Program was youth development and community involvement. The Teen Court Mural Program is designed specifically to support

positive youth development while simultaneously beautifying communities and strengthening relationships within neighborhoods throughout Santa Fe County. The mural program gives opportunity to engage students in positive self-reflection as role models and constructive participants in their communities. The long term outcome of our Teen Mural Program is that youth will develop the personal and professional confidence to work closely with a "client" to create an appropriate mural design based on the client's directive using creativity and artistic knowledge. The youth learn to work collaboratively with peers and mentors to execute the project and represent their creative work to a wider audience through press conferences, community focus groups, and a public mural unveiling, among other opportunities.

In May of 2013, under the guidance of seasoned muralist Jonathan Cohen, students designed and painted the mural on the home of the original land owner of Frenchy's Field, bringing it back to life as if it were still inhabited today. The students' intention for their beautiful work of public art is to act not only as a means of deterring graffiti and creating a shared responsibility for graffiti prevention at Frenchy's Field, but also celebrating the unique and colorful history of the park area and of the Santa Fe community. We celebrated with a mural unveiling on July 27, 2013.



Regional Emergency Communications Center (RECC)

The RECC receives all police, fire, medical and animal control Emergency 911 calls and non-emergency calls for Santa Fe County, the City of Santa Fe and the Town of Edgewood, and dispatches the appropriate agency to the location as needed. The Center operates on a 24 hour/7 day a week schedule.

RECC Implements Pilot Tracking Project

In calendar year 2013, the RECC completed the implementation of the pilot project for utilization of Global Positioning System (GPS)/ Automatic Vehicle Location (AVL) systems and the upgrade to the Computer-Aided Design (CAD) and mapping systems. RECC is now implementing closest unit dispatch protocols that will allow dispatch to deploy the response resource that is physically closest to the incident, in place of radio calls to units. This will decrease response times, improve officer and field unit safety, and increase overall dispatch efficiency.

Regional Training Location

RECC has established the Santa Fe County Center as a training hub for the region, hosting classes attended by law enforcement, fire and EMS agency personnel from various surrounding jurisdictions. Many Santa Fe County RECC employees have attained certification as State Law Enforcement Academy accredited instructors, allowing them to teach at the State Dispatch Academy and elsewhere as needed.

Santa Fe RECC Instrumental in New Mexico 911 Scholarship Funding

Santa Fe RECC was instrumental in getting New Mexico 911 operators included as scholarship recipients for funding to attend training in dealing with all aspects of violent crime. As a result, New Mexico 911 operators have also now been added to the list of eligible recipients for statewide training grant money provided by the United States Department of Justice through the New Mexico Crime Victims Reparation Commission under the Violence against Women Act.

RECC 2013 Call Volume

January 1, 2013 – December 31, 2013

**Total telephone calls handled 413,058
of those 76,658 were 911 calls**

Calls for Service (Number of Dispatches)

County response units dispatched 76,176

City response units dispatched 143,500

**Town of Edgewood
response units dispatched 5,942**

Emergency Management

National Incident Management System Utilized for Santuario de Chimayo Pilgrimage

Over 20 Public Safety Agencies spanning five separate jurisdictions came together in the 2013 event using the National Incident Management System. This system is a joint coordination effort between Santa Fe and Rio Arriba County Emergency Management Offices.

Wildfire Preparedness Meetings Held in Various Commission Districts

By request from County Commissioners the Office of Emergency Management presented several Community Wildfire Preparedness meetings throughout the County. The public was introduced to the *Ready, Set, Go Program* which was recently adopted by the New Mexico State Forestry Department.

Santa Fe County Emergency Management Flooding Response

Flooding in 2013 led to over a week of Emergency Management response. Over a thousand sandbags were delivered to San Ildefonso Pueblo. Severe flooding around Santa Fe County led to four simultaneous swift water rescue calls in the Turquoise Trail area and below the Galisteo Dam. General Goodwin and other roads in the area were impassable by emergency vehicles. Santa Fe County Office of Emergency Management requested National Guard assistance.

Other Initiatives

- Full Scale Active Shooter Exercise
- Bureau of Reclamation/ County Emergency Operations Center Drill
- School Emergency Planning Activities



Santa Fe County Fire Department

The Santa Fe County Fire Department's mission is to provide high quality fire, rescue and emergency medical services to the citizens and visitors of Santa Fe County. The Department protects approximately 1900 square miles of unincorporated area as well as the incorporated Town of Edgewood. Santa Fe County is also home to four Pueblos – Nambe, Pojoaque, Tesuque, and San Ildefonso - which rely on the Santa Fe County Fire Department for emergency services.

The Department maintains 32 fire stations countywide including five staffed regional stations and one staffed substation, as well as an extensive inventory of 199 vehicles including fire and EMS response apparatus and command and support vehicles.

Emergency Calls and Transport

- Responded to over 6,700 fire and emergency medical calls
- Treated and transported over 2,300 patients

Santa Fe County Fire Department Volunteer Recruitment

Santa Fe County Fire Department Recruiting and Retention Captain attended numerous job fairs, school career days and participated in Public Safety Day to help recruit new volunteers. In 2011 Santa Fe County Fire Department applied for and received a four year Staffing for Adequate Fire & Emergency Response (SAFER) grant in the amount of nearly \$499,200 which included funding for various media advertising campaigns, training costs, and the Recruitment and Retention Captain's salary and benefits. This resulted in the recruitment of 123 new volunteers, spread throughout 13 of the 14 County Fire Districts. The number of new

volunteers recruited in 2013 has helped maintain a steady number of volunteers who serve the fire department. Currently, Santa Fe County has approximately 350 dedicated volunteer firefighters.

Santa Fe County Fire Department Volunteer Training

- Completed two Volunteer Fire Academies resulting in 29 graduates who are International Fire Service Accreditation Congress (IFSAC) certified at the Firefighter I level. These graduates bring the total number of Volunteer Fire Assistance graduates to 139 in the past four years
- Completed Fire Officer I course for Volunteer District Officers resulting in 16 graduates

Santa Fe County Fire Department Grants

- Awarded 2013 New Mexico Fire Protection Grant in the amount of \$45,836.78 for Personal Protective Equipment, Thermal Imaging Cameras and 4-Gas meters for 2 Districts



- Purchased and distributed 106 sets of structural firefighting protective gear to the fire district volunteers acquired through a New Mexico Fire Protection Grant
- Awarded a Federal Emergency Management Agency grant to purchase breathing air compressors

Santa Fe County Fire Department Training

- Completed one Cadet Fire Academy with seven graduates
- Graduated three field staff members from Firefighter/EMT to Firefighter/Paramedic through the Santa Fe Community College Paramedic Program
- Enrolled three field staff members into the University of New Mexico, School of Emergency Medicine-Paramedic Program
- Hosted the first EMT-Advanced course for Santa Fe County and brought six field staff members from the EMT-Basic level to EMT/Advanced level
- Conducted 24 hours of Battalion training and over one hundred hours of fire and medical training

- Developed and delivered "Airway 911" course for over 150 Emergency Medical Technicians
- Held two basic auto extrication courses for seventy career staff and over a hundred volunteers
- Developed and implemented Aerial Apparatus training for the Northern and Western Regions of the county

Fire District Improvements

- Apparatus ordered and delivered in 2013 include: one Tanker, one Brush Truck and one Fire Engine for Eldorado; one Engine for La Cienega; one Ladder Truck for Pojoaque; one Engine for Edgewood; one Brush Truck for Madrid; one Engine for La Puebla; and one Brush Truck for Chimayo
- Completed remodel of old La Cienega Fire Station for Fire Prevention Office
- Plans to remodel for Hondo Station 1, Glorieta Sub-station and La Cienega Station 2 underway
- 25 pump tests, annual hose, ladder, SCBA testing and over 650 work orders for fleet maintenance completed

Solar Powered Firehouse First in the County

Santa Fe County completed a solar project to make the Tesuque Fire Station, the first fire station in Santa Fe County to be powered by the sun. The \$18,990, 6.1-Kilowatt solar system was funded in part from the nonprofit New Energy Economic as part of its "Sol not Coal" campaign. The Tesuque firehouse will be powered entirely by the sun and should receive a check of about \$20 a month from PNM. In total Santa Fe County will save approximately \$1,500 a year on energy costs because of the solar project. Santa Fe County started work on the second solar powered firehouse located in Chimayo.

Santa Fe County Of Select Few to Participate in National Fire Protection Program

Santa Fe County, in partnership with Forest Guild was selected along with seven other communities nationwide to participate in a Fire Adapted Communities Learning Network national pilot program. Fire Adapted Communities is a program of the National Fire Protection Association.

Fostering fire adapted communities has become a major focus of federal wildland fire and disaster management, and it is one of three primary goals of the National Cohesive Wildland Fire Management Strategy. The Fire Adapted Communities Learning Network was developed to study the different methods of community wildfire mitigation strategies that work, and to share those methods across the country among the different community "hubs". Each hub is then tasked with sharing the methods with collaborative partners in each area.





"We were chosen to participate in the pilot program based on our innovative and cost effective methods of identifying wildfire hazards on a parcel-level scale and utilizing that data to educate the communities identified as hazardous," said Krystyn Nystrom, Santa Fe County Wildland Urban Interface (WUI) Specialist.

The Santa Fe County assessment findings are published to a public website www.sfcfire-wildland.com, and a comprehensive plan of mitigation is created to prepare firefighting resources for a wildland fire incident and to guide the utilization of grant resources to the most cost effective mitigation efforts.

Krystyn Nystrom developed a specialized database to collect and disseminate assessment data which can be utilized across GIS and web applications, as well as developed a method to overlay the data onto the SimTable (a virtual wildland fire simulator) for use in firefighter training and public education.

Forest Guild in partnership with the Joint Fire Science Program is currently researching Santa Fe County's methods to provide guidance nationwide on the effectiveness of Community Wildfire Protection Plans and their implementations.

Santa Fe County, as a hub partner is recognized nationally as being an innovator in beginning to address the Wildland Urban Interface fire problem faced across the West. We are now beginning to share our methods with other counties in New Mexico, as well as with other organizations and local governments across the country.

For more information visit the Santa Fe County "hub" website at <http://www.fireadaptednewmexico.org>.

Corrections

The Santa Fe County Corrections Division has improved overall operations in the past year to focus on the delivery of services that consist of quality of life and care, customer service, continuous quality improvement, development of employee retention and fiscal responsibilities.

"The Santa Fe County Corrections Department has worked diligently to establish a professional, yet personable bond with our community, staff, volunteers, and inmates," said Warden, Mark Gallegos.

Increasing Staff and Training

The Corrections Division has refocused on the safe direct supervision of the entire inmate population by increasing staffing levels and upgrading the facility and equipment in the facility increasing safety and security for staff and inmates.

The Corrections Division has instituted new hiring and promotional standards which consist of a written and physical test, oral interview and a thorough background check of all applicants. Once accepted new hires are required to complete a six week training academy.

The six week training academy was adopted in 2013 to meet the standards of the American Corrections Association and the New Mexico Association of Counties Detention Mandatory Standards. The academy consists of each staff member completing training in security operations, customer service, dealing and treating the mental health and substance abuse addicted populations, and the overall commitment of providing a safe, secure, and humane environment with a variety of services to assist those in detention, whether they are sentenced to our facilities or awaiting transport, trial or sentencing. Santa Fe County graduated two cadet academies for a total of 23 detention officers.

Our current staff is also required to complete our Experience Based Training Academy, which is an enhanced 40 hour in-service training required for each employee governed by detention standards.

Through our new hiring process and retention program we were able to reduce our staff vacancy rate by 14 percent.

Santa Fe County First County to Adopt Crisis Intervention Training in the State

Santa Fe County was the first of 33 counties in the State of New Mexico to adopt the Crisis Intervention Training in our Academy with cadets and staff in dealing with inmates who have mental health disorders. This consists of identifying inmates upon intake who have mental health disorders and properly referring for follow up care in the facility as well as follow up treatment in the community.

Crisis Emergency Response Team Implemented

The facility administration implemented a well-trained Crisis Emergency Response Team (CERT) that will respond to any crisis or emergency in the facility. This team has been trained to deal with any facility crisis as well as being equipped with the modern equipment to do so.

County Facility Implements New Booking and Triage Process

Our administration implemented a new booking and inmate triage process which consists of a medical, mental health, substance abuse, and individual case management assessment of each inmate who is booked into the facility. Our professional staff in medical, security, behavioral health and case management screened and triaged each inmate and referred inmates in need of ongoing services to the right department for follow up.

Correction Facility Numbers 2013

- Inmates booked into the adult facility 9,221
- Inmates released from the adult facility 9,217



Working to Increase and Continue Services

Therapist created a referral process for inmates who need on-going mental health and or mental health therapy with community programs. Also new in 2013 was the implementation of weekly staffing for inmates who have severe special needs to assist with treatment plans and/or referrals to other programs within the facility and/or community. Upon release, inmates are referred to available community providers to ensure a true continuum of services which included Substance Abuse and Mental Health Treatment facilities, as well as to various departments within Children, Youth and Families. These cases involved a formal staffing conducted with the receiving agency to ensure proper information and diagnosis were communicated.

Corrections Capital Outlay Projects Completed in 2013

Santa Fe County completed five Capital Outlay projects to enhance the safety and security, both internally and externally at the Corrections facilities.

- Replaced plumbing fixtures throughout facility and replaced toilet and wash basin in booking
- Installed canopy in recreation yard
- Repaired/replaced fencing around perimeter
- Asbestos remediation/resurfaced floors in pods
- Purchased a Jetter and Forklift

Connecting with the Community

Santa Fe County Corrections worked with the community to receive additional educational materials, replenish our inventory of library books and also recruited volunteers to expand volunteer programming.

Life Skill Programs Implemented in FY 2013

Santa Fe County Corrections implemented several new Life Skill programs, but also worked to provide timely, professional, and comprehensive educational services to better prepare inmates for the job market which, upon release, will reduce the recidivism rate.

- Art Class
- Music Appreciation Class
- Creative Writing Class
- Art Appreciation Class
- Job Program (provides inmates with jobs within the facility while incarcerated)
- Created and implemented a Native American sweat lodge
- Created and implemented a portable Legal Library
- Therapeutic programs, such as "Thinking for a Change"
- Parenting classes, which provide inmate with a Life Skills Certificate
- Bible Study
- Alcoholics Anonymous (AA)
- Narcotics Anonymous (NA)



Highlighted Financial Accomplishments and Audits

- Reduced overtime resulted in a monthly savings of \$16,000, which equals an annual savings of \$192,000
- Generated \$6.8 million in revenue for Corrections through finalized confinement agreements with 28 governmental entities
- The New Mexico Association of Counties Detention Affiliate Auditing Team completed their final audit of the Adult Detention Facility auditing 208 detention standards. Preliminary recommendation was to support the passing of accreditation with 100 percent compliance to be awarded in 2014.
- The United States Marshal's audit team conducted two (2) detention standard audits that render a 100% compliance.
- A full time County Physician and Programs Manager were hired. The Physician assumed the role of Medical Director to develop and continue a sound medical team with a vested interest in county operations. The Programs Manager established additional inmate programming recruiting and training a total of 91 volunteers.
- Electronic Monitoring increased revenue by \$62,026.58 between Fiscal Year 2012 (\$106,522.22) and Fiscal Year 2013 (\$168,548.80) as part of an increase in population through court orders into the electronic monitoring program as an alternative to incarceration.

Santa Fe County Adult Detention Facility Staff Donates Coats for Kids and Adults

The Santa Fe County Adult Detention Facility staff and volunteers pitched in to make a few Santa Fean's winter a little warmer with some coats, hats and gloves in 2013. On Friday, December 20,



2013 staff from the Adult Detention Facility met with children who needed winter coats from Sweeney Elementary to help them pick out new coats, hats and gloves.

The donations were an assortment of new and slightly used items. In total 30 jackets were donated to the children at Sweeney Elementary.

The Adult Detention Facility Staff also collected men's and women's coats that were donated to the Esperanza Shelter in Santa Fe.

Youth Development Program (YDP) Development 2013

- The Santa Fe Fiesta Court, which gave a history presentation to the residents, presentation included mariachis, singing and dancing
- SITE Santa Fe Art Group volunteered with YDP residents and completed several art projects which included a piñata project
- Native American volunteers taught residents how to make wooden drums with leather hides and basket weaving from willow branches
- Hispanic Pathways to Brighter Futures Through STEM (Science, Technology, Engineering, and Mathematics) careers volunteer group brought knowledge and examples of job opportunities in the science and technologies field; volunteers who worked at LANL and Sandia Labs, scientists, Information Technology and music/video producers provided a question/answer session with residents to expand their knowledge in these fields.
- Yoga classes
- Narcotic and Alcohol Anonymous
- Meditation
- Bible study
- Girls Inc. volunteers came in to work with our female residents
- Young Fathers group came in to work with our male residents



Labyrinth Brings Sacred Space

- In September 2013 a group of inmates in Bravo created a labyrinth with staff and volunteers. Their shared hope was that it would become a sacred space set aside in the recreation yard where people could come to reflect or to pray, to experience peace and inner freedom. The labyrinth is not a maze or a puzzle to solve. The pathway winds into the center and the way out is the same as the way in. The labyrinth design is ancient and found in different variations in many cultures, including cathedrals in Europe and in Santa Fe where many people think of it as a symbolic pilgrimage.



Discover Your Inner Hero At Santa Fe County

In September 2013 Santa Fe County launched a Countywide campaign titled Discover Your Inner Hero that was a collaborate effort between the Corrections Division, Fire Department, Regional Emergency Communication Center, Sheriff's Office and Manager's Office. The campaign featured real Santa Fe County employees in print ads, bus wraps and commercials. Print ads appeared in various news publications, the bus wraps were on the back of City of Santa Fe Trails Buses, State of New Mexico Commuter Buses and North Central Regional Transit District "Blue Buses". The 30 second commercials were aired during Sunday night football games, 10 p.m. newscasts and other peak viewing times on local channels. The commercials even featured Santa Fe County employees as actors for non emergency responder rolls. While the campaign worked to increase employment in the Public Safety, it also was to help highlight the very close and intertwined coordination between the Public Safety at Santa Fe County. The Santa Fe County Sheriff's Office and Fire Department reached 100% staffing levels, there are minimal vacancies in the Regional Emergency Dispatch Center and increased employment at the Corrections facility.

Discover Your Inner Hero by visiting www.santafecountynm.gov/hero

Integrity.

Join Santa Fe County Public Safety
and Discover Your Inner Hero.

Sheriff | Fire | EMT/Medic
911 Dispatch | Corrections



505-992-9880
www.SantaFeCountyNM.gov/Hero



Courage.

Join Santa Fe County Public Safety
and Discover Your Inner Hero.

Sheriff | Fire | EMT/Medic
911 Dispatch | Corrections



505-992-9880
www.SantaFeCountyNM.gov/Hero



Honor.

Join Santa Fe County Public Safety
and Discover Your Inner Hero.

Sheriff | Fire | EMT/Medic | 911 Dispatch | Corrections

www.SantaFeCountyNM.gov/Hero

505-992-9880





A Sustainable Community



A Sustainable Community

Sustainable Land Development Code (SLDC)

The Sustainable Land Development Code (SLDC) was adopted by the Board of County Commissioners through Ordinance 2013-6 on December 10, 2013. The SLDC was adopted after an extensive public input process. The public input process included the release of the SLDC Adoption Draft in October 2013, which incorporated revisions to the SLDC Public Review Draft that was released in September 2012. Meetings were held in each area (El Centro, El Norte, Galisteo and Estancia) of the County as part of the outreach process in addition to Board of County Commissioners Study Sessions and Public Hearings. The public provided comments on the draft throughout the process.

In addition to the extensive rewrite, the following items were developed for the SLDC process:

- Developed preliminary zoning map for the SLDC
- Created Official Map Series for Sustainable Land Development Code, consisting of:
 - Sustainable Development Areas map;
 - Existing rights-of-way map;
 - Future road network map;
 - Bikeways map;
 - Open space, trails,

"We take pride in working with communities within Santa Fe County. The community planning program continues to evolve under the Sustainable Growth Management Plan objectives, setting forth a transparent, manageable and legal role for community and area based participation,"
Robert Griego, Santa Fe County Planning Manager.

- and parks map;
- Utilities map
- Created Affordable Housing Requirements and Archaeological Protection Zones maps for Sustainable Land Development Code.
- Revised proposed Official Zoning Map for Sustainable Land Development Code, based on public comments that have been received.
- Created zoning map GIS data for the community plan-based zoning ordinances and land use plans (12 altogether,) that has been rectified to the County's current parcel data, for potential use in SLDC Official Zoning Map. Also created matrix showing possible relationship of zoning districts in community zoning ordinance to SLDC zoning districts.
- Reviewed and revised zoning-related provisions in the draft Sustainable Land Development Code.
- Prepared GIS data and maps showing the geographic analysis zones that will be used for making population and employment forecasts, for use in drafting the County's development impact fee ordinance.

The zoning map will move through an approval process in 2014, once it is approved the SLDC will take effect as the new development Code for Santa Fe County.

For more information on the SLDC visit www.santafecountynm.gov/SLDC.

Community Planning

Santa Fe County works with unincorporated communities throughout the County to create plans that guide future growth and development and address community needs and values through the Community Planning program in accordance with the Sustainable Growth Management Plan.

Tesuque Community Plan

The Board of County Commissioners (BCC) adopted the Tesuque Community Plan via Resolution 2013-139. Through this community plan and past community efforts and partnerships, Tesuque continues to reinforce its historic development patterns and maintain a healthy ecosystem, enabling a sustainable future as a small distinctive rural community. For more information on the Tesuque Community Plan visit www.santafecountynm.gov » Growth Management / Land Use » Planning Division - Community Planning Program.

Chimayo Community Plan

The Board of County Commissioners authorized the initiation of a community planning process for the Chimayo community by passing Resolution 2012-48 and the Planning Division has coordinated the process to work with the Chimayo community to address future growth and development. Santa Fe County has coordinated with Rio Arriba County and other agencies in the development of the plan. County has completed the first three phases of the community plan and is in the final phase of the process. The final phase of the Chimayo process has been initiated and will include a series of open

houses, community meetings and a final draft of the community plan which is anticipated to be completed by mid-2014. For more information on the Chimao Community Plan visit www.santafecountynm.gov » Growth Management » Land Use » Planning Division - Community Planning Program.

Transportation

Santa Fe County participates within the jurisdiction of three regional planning organizations: the Metropolitan Planning Organization, The Northern Pueblos Rural Planning Organization, and the Mid-Region Council of Governments, Rural Transportation Planning Organization. Each organization is set up to help facilitate the planning and programming of federal funds to local transportation projects.

Metropolitan Planning Organization

This year Santa Fe County and the Metropolitan Planning Organization (MPO) worked closely on four major projects including:

- The County and the MPO will begin its update of the Santa Fe Metropolitan Transportation Plan in 2013.

- In 2013 the County worked closely with the MPO to successfully fund a critical segment of the Santa Fe Rail Trail.
- The Northeast and Southeast Connector Location Study, a critical study for the Community College District was initiated and public meetings were held to discuss alternative roadway alignments.
- The NE/SE Connector study will identify two new road segments east and north of Richards Avenue near the Community College aimed at relieving existing and future traffic.

North Central Regional Transit District Expanded Routes in Santa Fe County

Santa Fe County is a part of the North Central Regional Transit District (NCRTD) which provides transit service through the "blue bus" throughout the County including the communities of Española, Chimayo, Pojoaque, Eldorado, Tesuque, Edgewood and all of the tribal entities and many other areas in the County. The regional transit tax collected in the County last year along with federal dollars provided funding to NCRTD transit routes, and includes six regional routes operated by Santa Fe Trails bus system. The NCRTD expanded its routes in Santa Fe County in 2013 to add stops in Madrid and Cerrillos to the 599 route.



Economic Development

Santa Fe County received a \$2,500 grant from the NM Economic Development Department for the Certified Communities Initiative, which will be used to support unincorporated communities within Santa Fe County with their marketing and Public Relation efforts.

Santa Fe County initiated environmental remediation efforts at the Galisteo Road property (Old Public Works yard) in an effort to prepare the site for a residential housing project with affordable housing and senior housing components. A Phase I Environmental Assessment was completed, as well as a Minimum Site Assessment for the NM Environment Dept. Petroleum Tank Storage Bureau.

Santa Fe County collaborated on and hosted a series of economic development seminars for elected officials and staff from Santa Fe County, Los Alamos County, Rio Arriba County, and Taos County.

Santa Fe County sponsored the BizMix business plan competition.

Santa Fe County sponsored the SF Business Incubator's Global Entrepreneurship Week.

In collaboration with City of Santa Fe, the Regional Development Corporation, and the NM Partnership, coordinated efforts to include outdoor recreation/ecotourism on the list of the NM Partnership's targeted industries for business recruitment.

Draft Economic Development Plan

Santa Fe County completed a draft Economic Development Plan in 2013, to be considered by the Board of County Commissioners for adoption 2014.

The Economic Development Plan is an initiative to implement the Economic Development element of the Sustainable Growth Management Plan (SGMP). This Plan addresses the five target industries identified in the SGMP, which include:

- Arts/Culture
- Outdoor Recreation/Ecotourism
- Film/Media
- Green Energy/Water
- Agriculture

It also adds an additional target industry of Health/Wellness. The Plan provides an analysis of the local economy, and includes specific recommendations and policies for implementation.

Santa Fe Studios

Santa Fe Studios is one of the largest economic development projects in Santa Fe County, and is the newest, most modern studios in New Mexico. With 2 sound stages totaling almost 40,000 sq. ft.

On Site Local Economic Development Act (LEDA) Job Hours

- 2nd Quarter 2013 On Site LEDA job hours: 6,474
- 3rd Quarter 2013 On Site LEDA job hours: 7,774
- 4th Quarter 2013 On Site LEDA job hours: 7,202

The total LEDA hours of 207,700 is Construction plus on Site.

Film Productions:

- A Million Ways To Die In The West
- The Sixth Gun
- Cosmos: A Space Time Odyssey

Open Space and Trails Planning

The Open Space and Trails Community Planner position was moved to the Planning Division in 2013 to address open space and trails planning and to be the liaison with the County Open Lands Parks and Trails Committee (COLTPAC). COLTPAC initiated a process to address long range planning needs for open space, trails and parks Countywide. The Board of County Commissioners approved a Resolution for El Camino Real Buckman Road retracement project to submit a Federal Lands Access Program (FLAP) application for federal grant funds.

Affordable Housing Program

Foreclosure Prevention Program and Affordable Housing Sales Program

Through the Santa Fe County Affordable Housing Foreclosure Prevention Program and Affordable Housing Sales Program, the County sold five homes in 2013.

The purpose of the program is to preserve the affordable housing stock and original subsidy loans through resale of the units and assumption of the subsidy loans by households with incomes under 80% of Area Median Income.

Rent-to-own Program Created

A rent-to-own program was created and has received approval from the Housing Authority Board in 2013. This program enables income eligible households to enter into both a rental and purchase agreement and use the term of the lease to reduce debt, improve credit scores and save money for a down payment.

Down Payment Assistance Program Approves \$100,000 in 2013

Santa Fe County made six down payment assistance request approvals for 2013 totaling \$100,000 in assistance. These are zero percent, non-amortizing, deferred payment loans which are due on sale or vacating of the property. All of the assistance has been provided for the purchase of existing homes.

Homebuyer Training and Counseling

Staff has initiated a program of homebuyer training and counseling with Housing Authority tenants that

are participants in the HUD Family Self-Sufficiency Program (FSS) program or who are otherwise interested in homeownership. Staff has also facilitated credit counseling services with numerous other individuals who are interested in homeownership and the assistance programs that the County provides.

geographic coordinates so Santa Fe County can digitally compare "then and now" patterns of changing land use from large-scale agriculture to small residential lots and scattered agriculture. This unique method of visualization, presented to the community of Chimayó, has greatly aided in the development of the Chimayo Community Plan.



Roof Repair and Replacement Program

The County and its participating contractors completed one roof repair job for \$10,000 and have two other contracts in place, awaiting approval from the State Manufactured Housing Division to authorize GS-21 licensed contractors to perform work on manufactured home. To expedite the process for the coming year, staff has recruited additional contractors to bid on upcoming roofing work.

Affordable Housing Agreements

During 2013, staff worked with the developers of Oshara Village and Apache Springs to create new affordable housing agreements.

Geographical Information System (GIS) Changing the Way Santa Fe County Operates in 2013

Historic air photos were collected of the Chimayó area and tied to

GIS devised a method for mapping and analyzing a spreadsheet of traffic counts on County-maintained roads. This will add to other numeric evaluation of maintenance needs on County roads.

GIS became the database integration point for all documentation and mapping of past and current land ownership and leases. This facilitates cross-departmental sharing of data and information, and aids in evaluating County levels of service for various community amenities such as Senior Centers, Open Space, and Trails.

GIS and Development Review, in coordination with the State Historic Preservation Office (SHPO), developed a process of expedited archaeological review of new building permits. This process ensures that all new building permit applications are adequately reviewed by SHPO. This resulted in 106 total building permit applications forwarded to SHPO.



Volunteer Coordinator Increasing Volunteerism in Santa Fe County

In 2013 the Volunteer Coordinator for Santa Fe County worked on a variety of programs that increase volunteerism. The projects range from Food Drives to Open Space restoration. Based on her volunteer coordination and recruitment, several projects were complete and helped save tax payers money.

Some of her projects included but were not limited to:

Food Drive 2013- Community Services

Santa Fe County partnered with the Food Depot to collect non-perishable food in order to provide nutritious meals for neighbors in need. Santa Fe County had eight drop off food locations throughout the County equipped with containers to receive the food and monetary gifts. During the week of November 18-22, 2013, the total amount of food that was collected weighed in at 1013 pounds, and \$195 in monetary

contributions were collected. Valuing the monetary gifts at three pounds brought the total to 1,598 pounds. The total in contributions provides 2,131 meals.

Arroyo Hondo Volunteer Work Days

Carol J. Branch-volunteer coordinator for Santa Fe County planned and executed 3 volunteer work days at Arroyo Hondo Trail. Working with limited staff and 12 volunteers, they were able to vastly improve the trail.

Dead trees were removed, eroded areas of the trail were restored, dams were build and a three rail fence was installed as an overlook, using recycling materials.

In total 44 volunteer hours were utilized.

Save the Cottonwoods- La Cieneguilla

Workdays with volunteers from Youthworks and WildEarth Guardians worked to wrap the cottonwood trees with heavy wire fencing

to prevent beavers from gnawing the trees and eventually killing them.

Two staff members and 28 volunteers wrapped approximately 40 trees with 350 feet of fence.

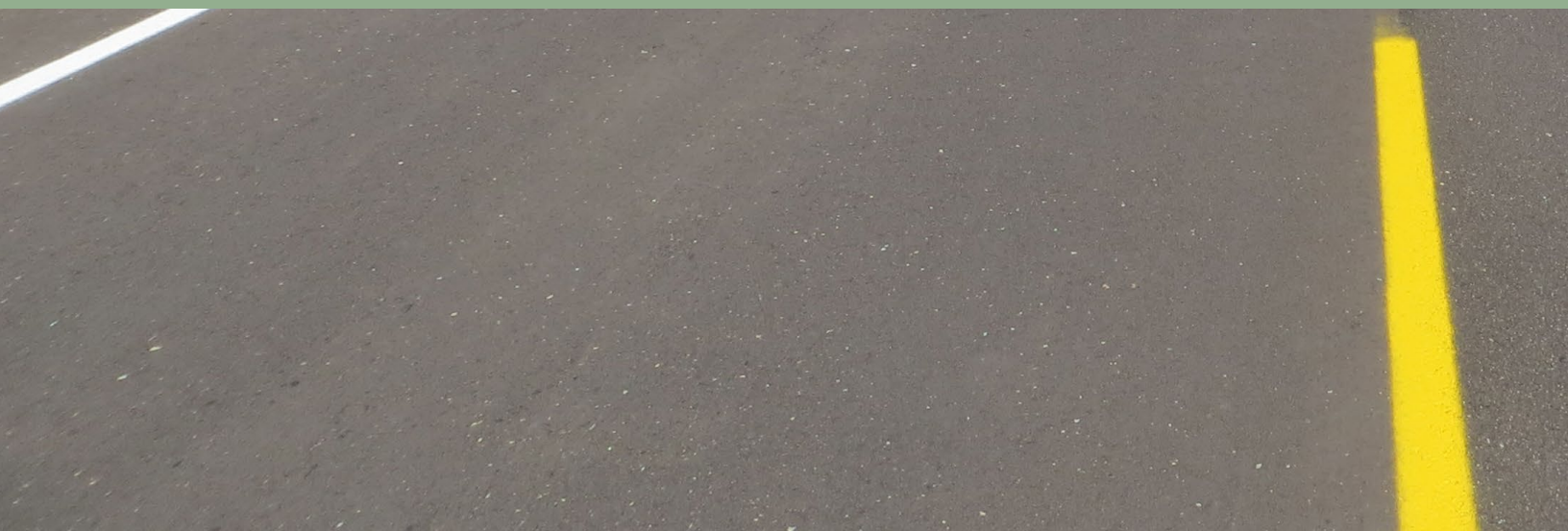
In total 141 volunteer hours were utilized for this for this event.

Equestrian Arena Extravaganza

The Open Space and Trails crew worked several days to put up signs and clear out dead brush to prepare for the Grand opening at the Edgewood Equestrian Arena. On Saturday August 3, 2013 Santa Fe County along with Rio Grande Mule and Donkey Association, High Desert Riders and several other equestrian clubs held a grand opening at the new Edgewood Equestrian Arena.



A Growing Community



A Growing Community

Traffic Calming Policy

A new traffic calming policy was adopted by the Board of County Commissioners on September 23, 2013 as the previous speed hump policy sunset in July of 2010. This new policy provides a mechanism for local residents to initiate traffic calming in their neighborhoods and allows for the use of appropriate traffic calming tools to help alleviate the negative impacts caused by traffic and speeding vehicles. This traffic calming policy is designed to coordinate the collaboration of County staff and citizens, in an effort to produce effective traffic calming throughout Santa Fe County's Communities on Santa Fe County maintained roads. For more information, including a copy of the Ordinance and related documents visit www.santafecountynm.gov » Public Works » Traffic Engineering Division

Santa Fe County Completed Projects List 2013

CR98 Road Widening Phase II

Santa Fe County completed the second phase of the CR98 Road Widening project. This project involved widening the east side

"The most direct interaction that many County residents have with their government is through Public Works: roads, solid waste and water. This makes our job that much more important,"

Santa Fe County Public Works Director, Adam Leigland.

of CR98. The project length was 2.26 miles, just east and south of Chimayo. The construction of this project began on August 27, 2013 and was completed on October 31, 2013. The final

construction cost came in at a savings of \$26,226.02 from the initial construction bid amount. The savings on this project came from the implementation of supplementary quality assurance procedures the contractor had to adhere to in the placement of construction material and the construction inspector ensuring compliance. This project also required the modification to existing drainage structures in order to accommodate the road widening.

Caja Del Rio Road Improvement Project Saves Over \$200,000

Santa Fe County recently completed the Caja Del Rio Road Improvement Project and upon the completion had a total project savings of over \$200,000 and a reduced completion time. The cost savings and shorter project time came from an extensive coordination between the Project Management, Public Works Department, Public Safety Department, Public Information Office, City of Santa Fe, local business and homeowners and the Contractor. The coordination allowed for a full road closure and work performed overnight, in place of building temporary roads, which was needed for installing a necessary culvert. In Addition to the cost savings, by not constructing and removing the temporary roads, the project was completed six weeks earlier.

Santa Fe County contracted Bohannan Huston as the design firm, The Louis Berger Group construction manager and contractor, Albuquerque Asphalt, Inc., for this project. The Caja Del Rio Road Improvement Project included the rehabilitation of 1.9 miles of existing asphalt surface to withstand current traffic demands and widening the road to accommodate bicycle lanes.

Steve Herrera First Judicial Complex

The new Steve Herrera First Judicial Complex was completed in February of 2013. The 103,000 square foot facility encountered numerous challenges during construction including the removal of 25,000 tons of contaminated soil, the treatment of approximately 5.5 million gallons of impacted ground water to remove contaminants and over 15,000 gallons of perched gasoline left by leaking tanks at three former gas stations. The Courts moved into the new building during the first week of June and officially opened on June 10, 2013.

The completed project is seeking a LEED Gold (*Leadership in Energy and Environmental Design*) designation. Conservation features include Storm Water catchment and storage for irrigation, high efficiency heating and cooling, high efficiency water fixtures, green paper products and janitorial supplies and a roof mounted array of photovoltaic solar collectors that provide 12% of the buildings total electrical demand. The completion of this project represents the culmination of over eight years of collaborative effort between Santa Fe County, the First Judicial District Court and its judges and the State of New Mexico.

El Rancho Basketball and Pojoaque Tennis Courts Re-surfacing

The El Rancho Community/Senior Center Basketball Court and Pojoaque Tennis Courts located off NM 503 were rebuilt and re-surfaced in the Summer of 2013. The existing courts were over laid with three inches of new asphalt and received new acrylic playing surfaces. Both facilities receive high use by the public and their refurbishment will allow for continued use well into the future.

Edgewood Open Space

The Edgewood Open Space is a 30 acre tract located in the Town of Edgewood. The project consists of an equestrian arena, trails, and a picnic area and is jointly operated with the City of Edgewood and the County. The project was completed in August 2013.

South Meadows Open Space

Located at the intersection of South Meadows Drive and Rufina Road, the South Meadows Open Space property was identified as a significant community resource by community members the year 2000. The County Commission recognized a unique opportunity to provide a single, large parcel of open space to the community in a rapidly urbanizing area of the greater Santa Fe Metro Area and approved the property for acquisition in 2001. The design of the project is complete and the project is currently waiting for additional construction funding.

Rail Trail Segments 1, 2, 3 and 4

The Rail Trail is a proposed 12 mile improved trail within the Santa Fe Southern Rail Road Right of Way. Construction of the first

1.7 mile segment of the alignment and the Rabbit Road trailhead are complete. The first segment runs from Rabbit Road south to the Spur Trail. Sections 2, 3, 4 are being prepared for construction in Spring 2014. The completion of all four segments will extend the trail through the Eldorado subdivision.

Edgewood Senior Center Garden

The community garden at the Edgewood Senior Center was fenced and a rainwater catchment system was installed to supply necessary irrigation during the dry season. Vegetables grown in the garden are utilized at the Senior Center's lunch room, providing a fresh, nutritious supplement to the senior citizens in the Edgewood area.

San Isidro Crossing

The San Isidro River Restoration Project included the development of the San Isidro River Park (approximately 2 acres) and the River Trail along with the rehabilitation of approximately one mile of the Santa Fe River between San Isidro Crossing and Lopez Lane. The Project included approximately 29 acres of open space property, part of which is adjacent to Agua Fria Park. Phase I of the Restoration Project employed a variety of innovative "Bioengineering" techniques to maintain the newly excavated channel configuration. The design consisted of a widened, meandering channel, sloped banks, and constructed flood plains. The series of meanders and other features, is hoped to create a more natural flow way that could enhance water quality, improve the environment and provide wildlife habitat along this part of the Santa Fe River.

Phase II was completed in August of 2013 and consisted of the construction of rock structures and willow wattles to stabilize the river

channel below San Isidro Crossing and address off-site drainage issues. The project also included landscaping and re-vegetation. A community sculpture designed by Michael Bergt will be installed at the San Isidro Crossing trailhead.

Edgewood Fire Station

The Edgewood Fire Station is a 14,998 square foot facility that accommodates the career and volunteer firefighters and Emergency Medical Personnel for the Southern Region of Santa Fe County as well as the Edgewood Fire District, providing coverage for the Town of Edgewood, southern Santa Fe County and assistance as needed to adjacent jurisdictions.. The fire station will provide comfortable accommodations for three different work shifts, including accommodations for volunteer staff, a living room, kitchen, offices, laundry room and outdoor patio spaces. Like the Rancho Viejo station, Edgewood has a training room with exercise and weight lifting equipment, a conference meeting room with a divider that separates the room in half to accommodate multiple meeting requests, offices for staff and an apparatus bay that houses nine fire and emergency vehicles. The Edgewood Fire Station sits on a 3.5 acre parcel leased from the State Land Office in the Town of Edgewood. The final construction cost was \$3.3 million.

La Cienega Fire Station #1 Remodel for Fire Prevention Division

The La Cienega Fire Station #1 is a remodel of an existing fire station that was converted to administrative offices for the Fire Prevention Division. The facility remodel created eight offices, a kitchen, a secured records room, a meeting room, a reception office and an apparatus bay.

Vista Grande Library Addition Underway

The Vista Grande Library serves the Eldorado, Glorieta, and surrounding area. Santa Fe County appropriated funding for the building expansion from the Gross Receipts Tax-funded Capital Projects that was initiated in 2012. The project consists of a 4,000 sq. ft. expansion along with site improvements.

This building addition will accommodate expanding the library collections, book shelf stacks, reference and periodical reading area as well as providing additional computer stations. Also included in the expansion is a new processing workroom, new office, three new tutoring/small meeting cubicles, a new meeting room (with a separate building entrance) that will allow the use of the meeting room for community meetings as well as for showings for the popular "Movie Night" and children's programs. Support spaces in the expansion include a kitchenette, store room, restroom data and janitor closets.

Maintenance Work Order Completion

The chart below shows total work orders from road, facilities, traffic, and parks and open space as tracked in Cartegraph and Maintenance Connection. The on-time completion rate exceeds the internal goal of 75% (which is our budget performance measure).

Total Work Orders	4415
On-time Completion	3599
On-time Completion Rate	82%

County Upgrades Completed by Public Works in 2013

Human Resources Building

The upgrades to Human Resources Building consisted of new tile flooring throughout hallways, bathrooms and existing conference room, new interior paint and new carpeting in office spaces. Expansion of the IT training room, custodian's closet and remodel of existing space to create new conference area was also included.

The demolition and complete rebuild of existing bathrooms was completed including replacement of all existing plumbing piping and fixtures. New sewer line was installed along perimeter of exterior of building. Bathrooms are now ADA compliant.

Corrections

Improvements at the County Correctional Facilities during 2013 include: Asbestos remediation at the Youth Development Program facility (YDP), Additional and replacement fencing at YDP, new canopy at the Adult Detention Facility (ADF), Plumbing upgrade including shower fixtures, toilets and wash basins at ADF and Cooling Tower replacement at the Public Safety Complex.

Administrative Building

Improvements at the County Administration Building at 102 Grant in 2013 included the remodel of two Commissioner offices and minor upgrades to the Treasurer's office.

Santa Fe County Studies

Arroyo Alamo West Drainage Study

The Arroyo Alamo West Drainage Study provides important documentation as to the existing drainage conditions in District 1 of the CR88D area and how it has been impacted by past rain events and how it will be impacted by future larger storm events. The study also provides a drainage priority plan in which summarizes the results of the feasibility estimates of the drainage recommendations presented in the drainage study.

Old Judicial Redevelopment Study

Santa Fe County has initiated a feasibility study to determine the highest and best use for the former First Judicial Complex in downtown Santa Fe. Study options include remodeling to consolidate County Administrative Offices as well as the sale of the property and creating an out of downtown "County Campus". Santa Fe County created an online survey to solicit feedback and also hosted a community meeting. The Board of County Commissioners will provide final direction in 2014.

Santa Fe County Solid Waste Division

Public Works Solid Waste Division processed 10,064 tons of solid waste, by transporting from each transfer station to the Caja Del Rio landfill.

Recycling Rate in Santa Fe County 17.5 %

Santa Fe County Solid Waste processed 1,771 tons of recycling in calendar year 2013. The recycling

tonnage reflects a recycling rate of 17.5%, which is 3% higher than the state average of 14.35%.

Congratulations to Santa Fe County residents for your wonderful recycling efforts!

All Santa Fe County residents can recycle paper, plastic, cardboard, aluminum and glass for FREE at any Transfer Station.



2013 Completed Road Projects

Jaymar Road

Drainage improvements, placement of four inches of basecourse and a new double penetration chip seal surface along with a fog seal on 1 mile of road.

Project Funding Source

General Obligation Bond

Project Cost

\$166,343

B Anaya Road

Drainage improvements, placement of four inches of basecourse and a new double penetration chip seal surface along with a fog seal on 2 miles of road.

Project Funding Source

General Obligation Bond

Project Cost

\$292,721

North Weimer Road

Drainage improvements, placement of four inches of basecourse and a new double penetration chip seal surface along with a fog seal on 2.53 miles of road.

Project Funding Source

General Obligation Bond

Project Cost

\$325,183

Hale Road

Drainage improvements, placement of four inches of basecourse and a new double penetration chip seal surface along with a fog seal on 4.01 miles of road.

Project Funding Source

General Obligation Bond

Project Cost

\$761,950

Roach Road

Drainage improvements, placement of four inches of basecourse and a new double penetration chip seal surface along with a fog seal on .76 miles of road.

Project Funding Source

General Obligation Bond

Project Cost

\$150,233

Western Road

Drainage improvements, placement of four inches of basecourse and a new double penetration chip seal surface along with a fog seal on 3.28 miles of road.

Project Funding Source

General Obligation Bond

Project Cost

\$440,071



Camino La Tierra

Single Machine Hot-In Place Surface one and a half inch overlay for 2.64 miles of road.

Project Funding Source

General Obligation Bond

Project Cost

\$542,732

Old Lamy Trail

Single Machine Hot-In Place Surface one and a half inch overlay for 1.54 miles of road.

Project Funding Source

General Obligation Bond

Project Cost

\$210,493

Ellis Ranch Road

Drainage improvements and placement of a single penetration chip seal on top of the existing chip seal surface for .40 miles of road.

Project Funding Source

NMDOT Local Government Road Fund Grant. NMDOT 75% contribution, Santa Fe County 25%.

Project Cost

\$29,105*

Rancho Alegre Road

Drainage improvements and placement of a single penetration chip seal on top of the existing chip seal surface for 1.13 miles of road.

Project Funding Source

NMDOT Local Government Road Fund Grant. NMDOT 75% contribution, Santa Fe County 25%.

Project Cost

\$27,007*

Nine Mile Road

Drainage improvements and placement of a single penetration chip seal on top of the existing asphalt surface for 2.01 miles of road.

Project Funding Source

NMDOT Local Government Road Fund Grant. NMDOT 75% contribution, Santa Fe County 25%.

Project Cost

\$50,328*

Apache Plum Drive

Drainage improvements and placement of a single penetration chip seal on top of the existing asphalt surface for .62 miles of road.

Project Funding Source

NMDOT Local Government Road Fund Grant. NMDOT 75% contribution, Santa Fe County 25%.

Project Cost

\$11,996*

Double Arrow Road

Drainage improvements and placement of a single penetration chip seal on top of the existing chip seal surface for .90 miles of road.

Project Funding Source

NMDOT Local Government Road Fund Grant. NMDOT 75% contribution, Santa Fe County 25%.

Project Cost

\$22,535*

Ojo Del La Vaca

Drainage improvements and placement of a one and three fourths Hot Mix Asphalt overlay for 1.00 miles of road.

Project Funding Source

Santa Fe County Road Maintenance Budget

Project Cost

\$70,000*

Canada Ancha

Placement of a fog seal for .90 miles of road.

Project Funding Source

NMDOT Local Government Road Fund Grant. NMDOT 75%, Santa Fe County 25%

Project Cost

\$4,000*

Camerada Road

Placement of a fog seal for .31 miles of road.

Project Funding Source

NMDOT Local Government Road Fund Grant. NMDOT 75%, Santa Fe County 25%

Project Cost

\$2,400*

Thankohay P'oe (CR 113)

Construction of new low water crossing

Project Funding Source

Santa Fe County Road Maintenance Budget

Project Cost

\$27,000

Calle Francisco

Construction of new all weather crossing

Project Funding Source

Santa Fe County Road Maintenance Budget

Project Cost

\$25,000*

La Tierra Subdivision Chip Seal Projects

Drainage improvements, placement of 6" of basecourse, and a new double penetration chip seal surface along with a fog seal on 1.75 miles of road. Roads improved were Vuelta Tomas, Vuelta Linda, Vuelta Muerdago, Vuelta Montuoso, and Estrada Redonda.

Project Funding Source

La Tierra Subdivision Homeowner Association Fees

Project Cost

\$170,000*

*Reflects the cost for materials only, does not include County labor or use of equipment to perform the work.

Santa Fe County Utilities

Santa Fe County Expands Customer base by 40%

Santa Fe County Utilities incorporated approximately 1,000 water and wastewater customers, expanding the customer base by over 40% in 2013. The expansion was part of the County-City Annexation agreement. The Utilities Division has implemented additional customer services and operations programs as part of the customer base growth.

Santa Fe County also added the Penitentiary of New Mexico as a utility customer. The Penitentiary can rely on a safe, renewable potable supply, while local groundwater resources are rested.

Buckman Direct Diversion

Utilities provided approximately 500 acre-feet (162 billion gallons) of potable water to its customers in 2013, thus reducing the basin's reliance on groundwater through the Buckman Direct Diversion (BDD). The BDD produces safe, reliable, and renewable water for utilities customers using Santa Fe County Rio Grande water rights.

Quill Wastewater Treatment Plant Protecting Regional Groundwater Supply

The Utilities Division has made critical repairs in the treatment process to the Quill wastewater treatment plant; including replacing lagoon liner, increasing aeration capacity, and emptying a sludge basin. With additional planned repairs and upgrades, the Quill plant will be able to accept wastewater from nearby areas, thus protecting the region's groundwater quality.

Aamodt

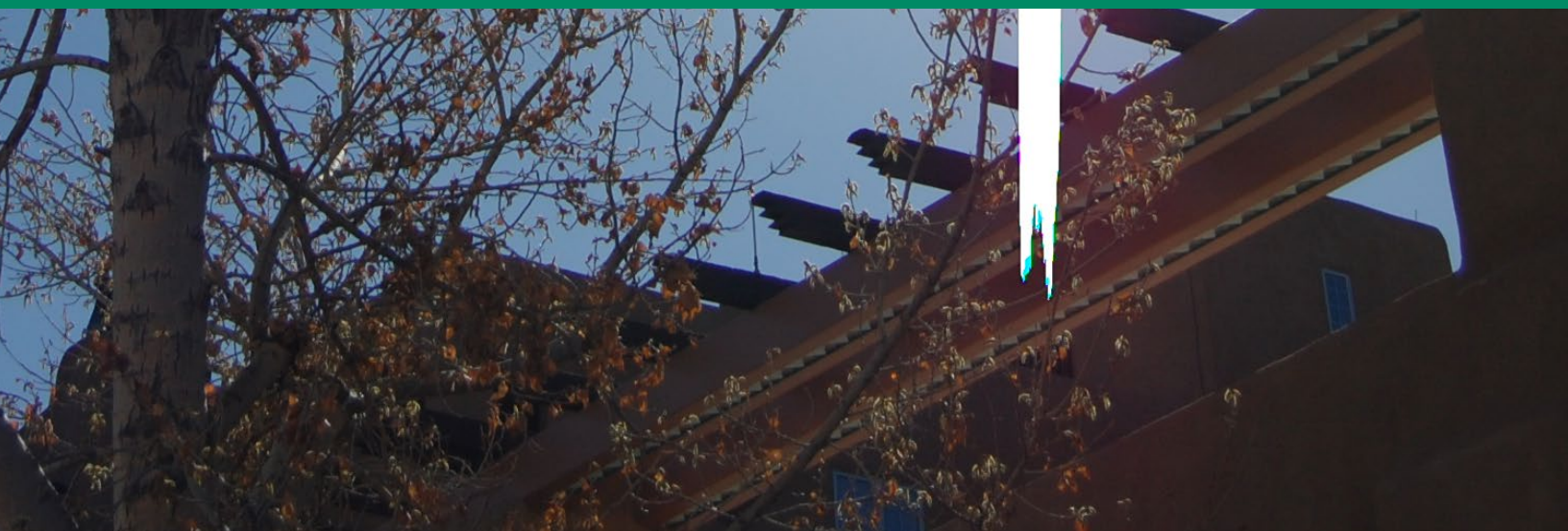
Aamodt settlement continues to make significant headway. In efforts to help provide information to residents affected by the settlement Santa Fe County has a webpage dedicated to providing information, important documents and meetings dates on our website. Residents can access the page by going to www.santafecountynm.gov and clicking on Aamodt Settlement Information under Hot Topics.

Santa Fe Basin Climate Change Studies

Recognizing the need for water planning in light of projected impacts from climate change, Santa Fe County is partnering with the City of Santa Fe and the Bureau of Reclamation in a federal basin study program. The Santa Fe Basin Climate Change Studies will identify how water supplies in the Santa Fe watershed will be impacted and what kinds of adaptation measures would benefit our community.



A Proficient and Transparent Community



A Proficient and Transparent Community

Community Centers

Santa Fe County owns or leases and manages seven Community Centers (listed below) for community use. Community Centers are for the use of residents and are to be used primarily for public purposes that benefit the community. Priority for using the Centers is given to public events and activities open and geared toward the community at large. Centers cannot be used for any business, profit making endeavors or political events.

In June of 2013 the Santa Fe County Board of County Commissioners passed a new Resolution for Centers that establishes Trustees at each Center to assist the Community Services Department in the operation of the Centers. During 2013, the Centers were utilized by 304 County residents for events such as birthday parties, meetings, neighborhood celebrations or memorials.

Our Community Centers

Bennie J. Chavez Senior and Community Center, Chimayo, NM

Cundiyo Community Center, Cundiyo, NM

El Rancho Senior and Community Center, El Rancho, NM

Santa Fe County continually strives to be better, to save money, to be more transparent. The amount of recognition our County has received is a testament to the staffs commitment of providing quality work in addressing the County's needs, resources, commission priorities and more,"
County Manager, Katherine Miller.



Nancy Rodriguez



Nambe



La Cienega



Cundiyo Senior Center



La Cienega



El Rancho



Rio en Medio / Chupadero Center

La Cienega Community Center,
La Cienega, NM

Rio en Medio/Chupadero
Community Center, Chupadero, NM

Nambe Community Center, Nambe,
NM

The Nancy Rodriguez Community
Center, Santa Fe, NM

To Rent a Community Center visit
www.santafecountynm.gov »
Community Services » Community
Centers.

Satellite Offices

Satellite Offices provide outreach constituent services to the citizens of Santa Fe County. Satellite offices are located in Edgewood, Eldorado and Pojoaque. County staff answers general constituent questions, registers people to vote, provides other County Clerk information; Assessor information; Healthcare Assistance information; County vacant job descriptions and applications; and processes solid waste landfill permits.

From January 2013 through December 2013, Satellite Offices sold 805 solid waste landfill permits for \$152,617.

Website Transparency

For Information on the Satellite Offices visit www.santafecountynm.gov » Contact Us » Satellite Offices.

The Sunshine Review, a national nonprofit organization dedicated to government transparency, released the winners of the fourth annual Sunny Awards in March and among the 2013 winners was Santa Fe County. The award honors the most transparent government websites in the nation. Santa Fe County received an A+ from the nonprofit organization. Santa Fe County received an A+ and Sunny Award in 2012 from the organization and an A in 2011.

For the 2013 awards, editors at Sunshine Review analyzed more than 1,000 qualifying government websites and graded each on a 10-point transparency checklist. Editors looked at content available on government websites against the criteria of what should be provided. They sought information on items such as budgets, meetings, lobbying, financial audits, contracts, academic performance, public records and taxes.

Looking to Online Surveys and Online Comments for More Community Input

In 2013, Santa Fe County increased its online survey presence in hopes of soliciting more Community Input. Items such as the Old Judicial Courthouse Study and National Citizen's Survey were available online for residents to provide input. In addition to online surveys, Santa Fe County asked members of the public to email comments on the Sustainable Land Development Code and Animal Control Ordinance among many other items. Santa Fe County also encourages residents to use our Online Public Comment form to send information to Santa Fe County.

Online Comment Form

Santa Fe County launched a new online comment form for residents. The new form was developed to be quick and easy to fill out. The tool allows residents the opportunity to leave their contact information so staff can follow up with them or bypass the contact information fields by simply clicking an anonymous button. The form is a great tool for residents to provide feedback and ideas to Santa Fe County.

The new online comment form can be found by selecting "Public Comment Form" from the Quicklinks dropdown menu on the homepage www.santafecountynm.gov.

Santa Fe County Website Goes Mobile

In 2013, Santa Fe County created a mobile website for individuals who access information on devices such as smart phones and tablets.

Human Resources

Veterans Hiring Initiative Enacted

Santa Fe County adopted a resolution establishing the Veterans Hiring Initiative for the purpose of increasing opportunities for Veterans to obtain employment with Santa Fe County. This hiring initiative recognizes veterans who have served and sacrificed for our Country with honor, courage and dignity. It assists in recognizing the economic loss suffered by citizens who have served our country in uniform. The initiative adds great value to the County because veterans are highly trained individuals that possess a multitude of skills and experience and the motivation to serve the public.

Investing in the County Workforce

- All Santa Fe County staff received a Cost of Living Adjustment (COLA) increase of one percent in January 2013.
- In July 2013, all employees received a COLA flat rate percentage increase depending on their annual income pay range.
- A temporary salary adjustment was given to employees earning less than \$70,000 as a retention incentive in July 2013.
- Increased the starting pay for Sheriff's Office Deputy Cadets to \$17.50 per hour to remain competitive with surrounding agencies.
- Increased Sheriff's Office detective incentive pay to remain competitive with surrounding agencies.
- Conducted salary studies on various job classifications which resulted in salary adjustments for identified classifications.
- Effective March 1, 2013, Santa Fe County opted to pay employees consistent with the City of Santa Fe Living Wage Ordinance.
- Conducted 163 training sessions which resulted in 323.5 training hours
- Processed 163 NM Edge applications which resulted in \$39,750 in assistance to employees to attend NM Edge training and education courses.
- Assisted 21 employees with tuition assistance to complete college courses.

Union

- Successfully negotiated wage re-openers with the Coalition

of Public Safety Officers-Sheriff Deputies Union, Coalition of Public Safety Officers -RECC Union, Coalition of Public Safety Officers -Corrections Union, and the International Association of Firefighters Local 4366 Union.

- Successfully completed negotiations of the entire agreement with AFSCME.
- Conducted open enrollment for employee benefits which required a mandatory audit and collection of required documentation
- Conducted open enrollment for ASI Flexible Spending Account Program. Due to the State of New Mexico Risk Management Division no longer offering this benefit to local public bodies such as Santa Fe County, we opted to continue to provide this benefit to our employees (without a disruption in services).

Increased Contributions Towards Employee Benefits

- Employees who earn \$30,000 or less, from 63% to 80%
- Employees who earn \$30,001 to \$50,000 from 63% to 70%

Santa Fe County Recruiting Local Through Career and Job Fairs

- **Capital High School Career Fair** - Human Resources attended the Capital High School Career Fair and were able to communicate with students the various options for careers with Santa Fe County. Staff was also able to explain our tuition assistance program to students who may be interested in beginning work immediately upon graduation, but would still like to attend college. Santa Fe County distributed over 50 job applications during this event.

- **Northern New Mexico College Job Fair in Espanola and Santa Fe Community College Job Fair** - Santa Fe County Human Resource staff attended the Northern New Mexico College Job Fair to promote vacant positions, explain benefits, and discuss various employee programs. With participation at the two College Fairs, staff engaged discussion and employment opportunities with approximately 65 people.
- **National Night Out** – Santa Fe County had Human Resources staff present at the National Night Out on the Plaza event to promote County job opportunities, employee benefits and other employment information.

Health Fair 2013

The Human Resources Division hosted the annual Health Fair during the annual County Picnic with great turnout. In total, approximately 240 employees attended and 10 vendors participated in supporting the County's healthy lifestyle initiatives. Staff has provided great feedback on the benefits and enjoyment of the Health Fair.

County participates in NM EDGE

Santa Fe County hosted the July 2013 NM EDGE courses, which were conducted at our Rancho Viejo Fire Station. County Manager Katherine Miller taught CPM 111-Knowing Your Government and Adam Leigland, Public Works Director taught CPM 156-Improving Your Writing Skills. We are proud to announce that many employees are interested in taking NMEDGE courses and obtaining their certification.

NM EDGE, a service of New Mexico State University's **Coop-**

erative Extension Service, is a program designed to provide a comprehensive course of study to administrators, managers, elected officials, and staff in local, state, tribal, and national government, through which participants can acquire and apply the best practices and theory to their management behaviors and strategies using the highest professional standards.

Second Annual Public Safety Day

Santa Fe County hosted the Second Annual Public Safety Day. The Public Safety Day is an opportunity for the public to learn more about careers with Santa Fe County Public Safety to include the Sheriff's Office, the Corrections Department, the Fire Department and the Regional Emergency Communications Center. The event allowed interested candidates to take practice written and physical agility exams as a measuring tool in preparing for the actual testing process. A coordinated effort was established for getting the information to the community including: interviews on a local radio station, information provided through the County's social media Facebook and Twitter, the County website, an informational booth at the State Fair, at the County Fairgrounds, National Night Out event, as well as flyers distributed to various businesses.

Financial Information

Audits

For the past 16 years, Santa Fe County has maintained an unmodified audit opinion. This represents a "clean" audit. Santa Fe County worked diligently to resolve its four prior year audit findings and

will strive to resolve new findings in FY 2014.

County Receives Distinguished Budget Presentation Award

Santa Fe County received the Distinguished Budget Presentation Award for the Fiscal Year 2013 Budget from the Government Finance Officers Association of the United States and Canada (GFOA). The award was presented at the October 29, 2013 regular Board of County Commissioners meeting.

This is the fifth year our Finance Division has received the distinguished budget award. It is a testament to the staff's commitment of providing a quality document that provides more than spreadsheets and numbers. The budget actually tells a story of the County's needs, resources, commission priorities and more.

When a Distinguished Budget Presentation Award is granted to an entity, a Certificate of Recognition for Budget Presentation is also presented to the individual or department designated as being primarily responsible for having achieved the award. This award has been presented to the Santa Fe County Budget Office, Finance Division.

In order to receive the budget award, Santa Fe County had to satisfy nationally recognized guidelines for effective budget presentation. These guidelines are designed to assess how well an entity's budget serves as:

- A policy document
- A financial plan
- An operations guide
- A communications device

Budget documents must be rated proficient in all four categories,

and the fourteen mandatory criteria within those categories, to receive the award.

The Government Finance Officers Association is a nonprofit professional association serving over 17,800 government finance professionals throughout North America. The GFOA's Distinguished Budget Presentation Awards Program is the only national awards program in government budgeting.

Performance-Based Budgeting

Santa Fe County completed the second phase to transition to a performance-based, results-accountable budget in its FY 2014 budget process. Each department was asked to collaborate within its divisions to develop broader departmental functions which cross divisional lines. Performance measures and goals were established based on these cross divisional functions. All performance measures and goals were required to impact (directly or indirectly) at least one of the County's seven key areas of focus and/or a Commission or Citizen priority. The next phase in the transition to performance-based budgeting is being planned for the FY 2015 budget.

A high priority in the FY 2014 budget was to invest in existing County resources. First and foremost, the County invested significantly in its workforce during 2013. This investment took the form of a higher level of County contribution to health insurance premiums for staff earning under \$50,000 per year, expanding educational benefits for professional development and providing cost of living increases, retention incentives and creating a merit pool.

This investment in staff also included improving the physical environment for staff and improving the equipment provided for staff to use. The

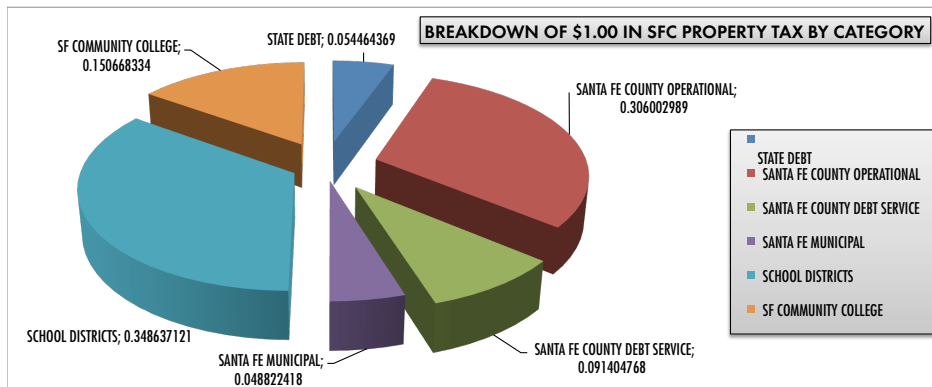
investment in County resources also funded a higher degree of maintenance for the County's assets from its heavy equipment, to its buildings, to its roads and its open space.

The outcome of the budget process was a sound financial plan for FY 2014 which provides the resources necessary to accomplish the goals established by the County's departments. The plan included very conservative increases in gross receipts taxes and some other revenue sources, significant one-time expenditures of cash for large maintenance and repairs at the County's facilities, and a large asset renewal and replacement plan which provides staff with the equipment they need to reach their goals.

Bond Rating

During the November 2012 general election, Santa Fe County voters approved three Bond Questions totaling \$35 million for capital improvement projects including roads (\$19 million), water and wastewater (\$10 million), and open space (\$6 million) projects. In response to voter approval of these bond questions, Santa Fe County issued \$19 million in general obligation bonds in May of 2013. Santa Fe County is very proud to have maintained its Standard and Poor's general obligation bond rating of AA+ and received the lowest interest rate (lowest cost to borrow) of any bond issuance in recent history. In rating the bonds, Standard and Poor takes into account the sound financial practices that the County observes and its strong cash reserves which are at or greater than both the State mandated level of reserves and the stricter Santa Fe County policy regarding reserves.

*Santa Fe County
FY 2013 Total Budget Sources
\$239,890,842*



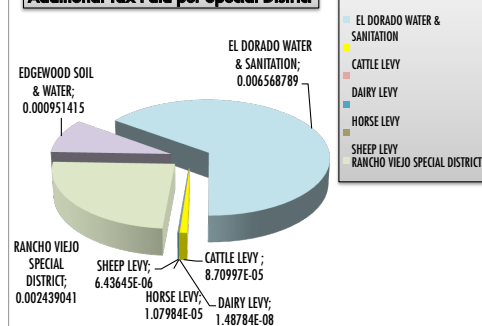
Property Taxes Billed for 2009 to All County Residents

STATE DEBT	\$	7,687,346.57	\$	0.05
SANTA FE COUNTY OPERATIONAL	\$	43,190,641.20	\$	0.31
SANTA FE COUNTY DEBT SERVICE	\$	12,901,280.94	\$	0.09
SANTA FE MUNICIPAL	\$	6,891,016.20	\$	0.05
SCHOOL DISTRICTS	\$	49,208,214.84	\$	0.35
SF COMMUNITY COLLEGE	\$	21,266,007.88	\$	0.15
Subtotal		141,144,507.63	\$	1.00

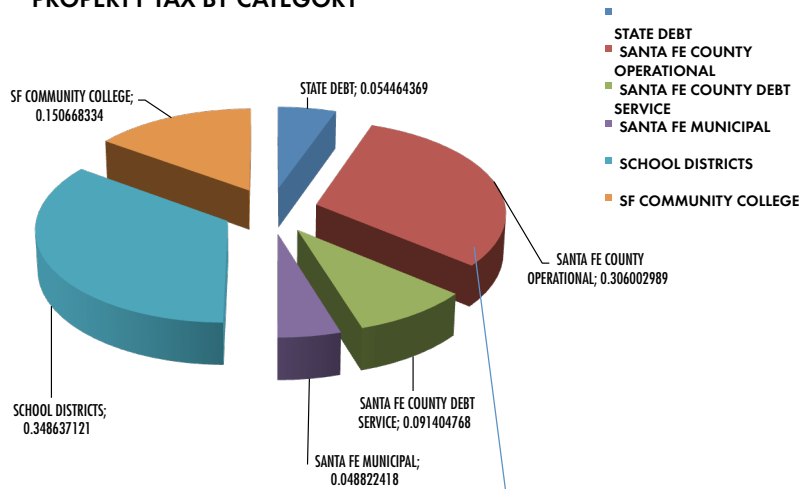
Additional Taxes Billed for 2009 to Special Districts

EDGEWOOD SOIL & WATER	\$	134,287	\$0.0010
EL DORADO WATER & SANITATION	\$	927,149	\$0.0066
CATTLE LEVY	\$	12,294	\$0.0001
DAIRY LEVY	\$	2	\$0.0000
HORSE LEVY	\$	1,524	\$0.0000
SHEEP LEVY	\$	908	\$0.0000
RANCHO VIEJO SPECIAL DISTRICT	\$	344,257	\$0.0024
Subtotal	\$	1,420,421	\$0.0101
Grand Total Property Taxes Billed 2009	\$	142,564,928.74	

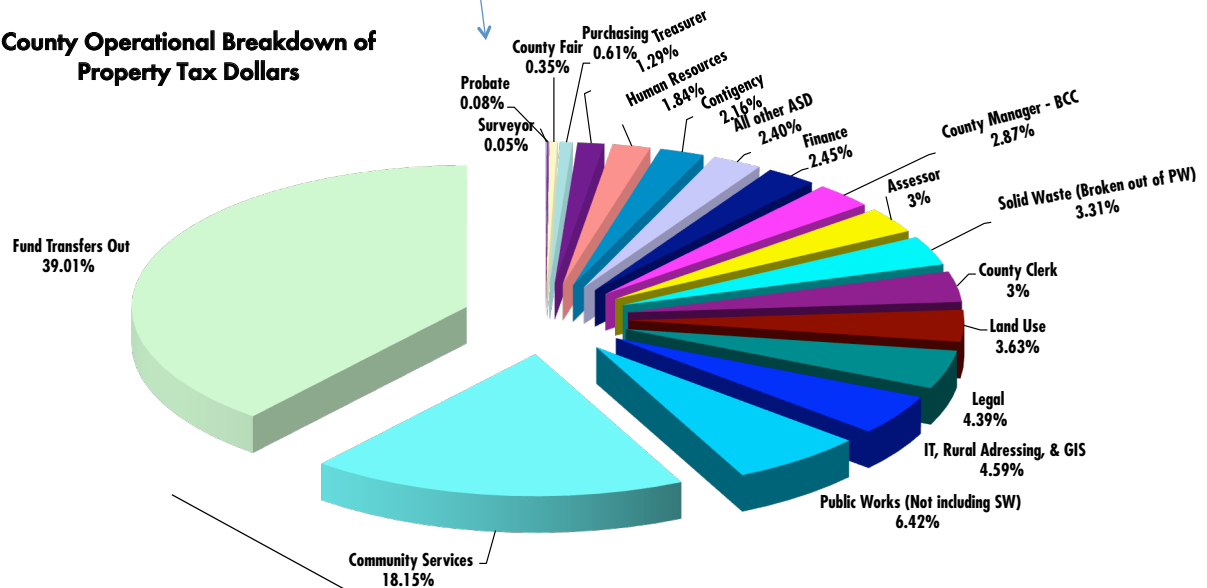
Additional Tax Paid per Special District



BREAKDOWN OF \$1.00 IN SFC PROPERTY TAX BY CATEGORY



County Operational Breakdown of Property Tax Dollars



Transfers Out

