

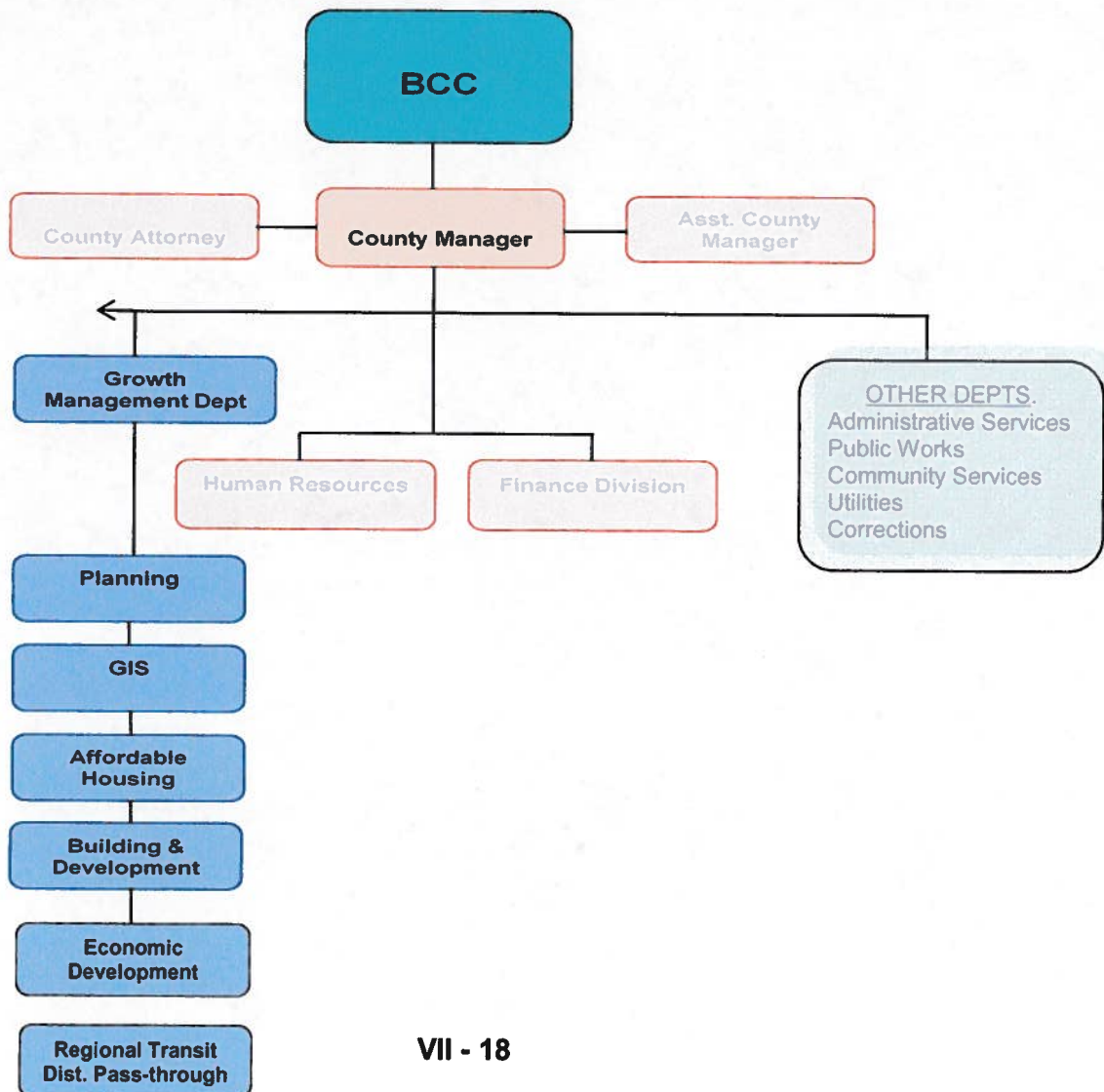
**SANTA FE COUNTY**  
**FISCAL YEAR 2011 BUDGET**



**SECTION VII**  
**ORGANIZATION BUDGETS**

**GROWTH MANAGEMENT DEPARTMENT**

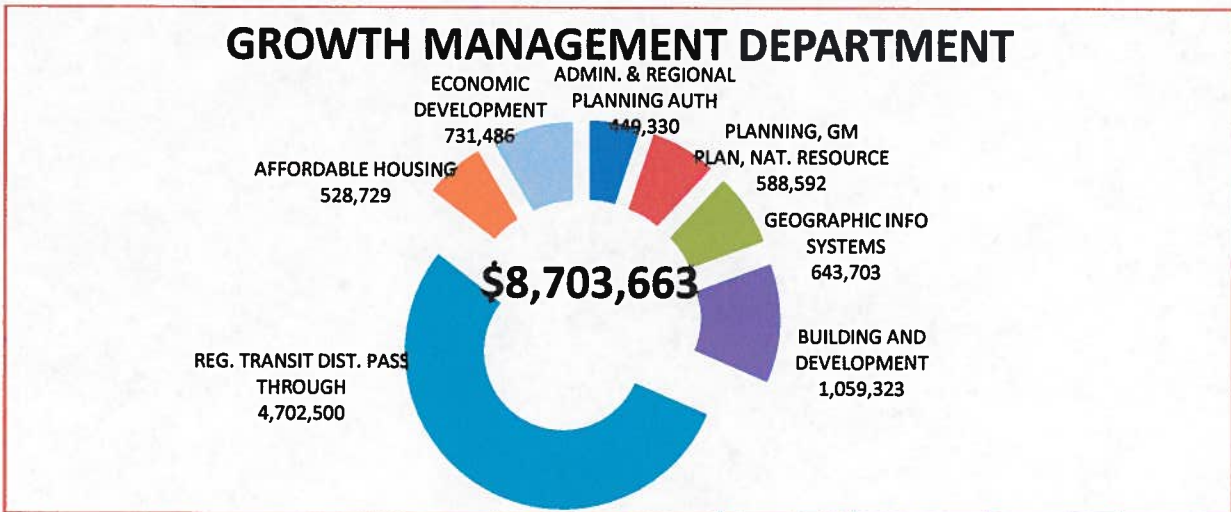
GROWTH MANAGEMENT	GENERAL FUND	SPECIAL REVENUES	CAPITAL IMPROVE	DEBT SERVICE	ENTERPRISE FUNDS	FY 2011 TOTAL
ADMIN. & REGIONAL PLANNING AUTH	355,607				93,723	449,330
AFFORDABLE HOUSING		528,729				528,729
ECONOMIC DEVELOPMENT		731,486				731,486
PLANNING, GM PLAN, NAT. RESOURC	588,592					588,592
GEOGRAPHIC INFO SYSTEMS	643,703					643,703
BUILDING AND DEVELOPMENT	1,059,323					1,059,323
REG. TRANSIT DIST. PASS THROUGH		4,702,500				4,702,500
<b>TOTAL</b>	<b>2,647,225</b>	<b>5,962,715</b>	<b>0</b>	<b>0</b>	<b>93,723</b>	<b>8,703,663</b>





# SECTION VII ORGANIZATION BUDGETS

## GROWTH MANAGEMENT DEPARTMENT



GROWTH MANAGEMENT	FY 2011 BUDGET	FUNDED POSITIONS	FROZEN POSITIONS
ADMINISTRATION			
ADMINISTRATION	355,607	4.0	
REGIONAL PLANNING AUTHORITY	93,723	0.5	0.5
SUBTOTAL	449,330	4.5	0.5
AFFORDABLE HOUSING			
AFFORDABLE HOUSING	528,729	2.0	
SUBTOTAL	528,729	2.0	0.0
ECONOMIC DEVELOPMENT			
ECONOMIC DEVELOPMENT	731,486		
SUBTOTAL	731,486	0.0	0.0
PLANNING			
PLANNING	533,001	7.0	1.0
GROWTH MANAGEMENT PLAN	9,206		
NATURAL RESOURCES	46,385		
SUBTOTAL	588,592	7.0	1.0
GEOGRAPHIC INFORMATION SYSTEMS			
GEORGRAPHIC INFORMATION SYSTEMS	643,703	8.0	
SUBTOTAL	643,703	8.0	0.0
BUILDING & DEVELOPMENT			
BUILDING & DEVELOPMENT	1,059,323	16.0	1.0
SUBTOTAL	1,059,323	16.0	1.0
REGINAL TRANSIT DISTRICT PASS-THROUGH			
REG. TRANSIT DIST. PASS-THROUGH	4,702,500		
SUBTOTAL	4,702,500	0.0	0.0
<b>TOTAL GROWTH MANAGEMENT DEPARTMENT</b>	<b>8,703,663</b>	<b>37.5</b>	<b>2.5</b>

**SANTA FE COUNTY**  
**FISCAL YEAR 2011 BUDGET**



**SECTION VII**  
**ORGANIZATION BUDGETS**

**GROWTH MANAGEMENT DEPARTMENT**

**Growth Management Department (All Divisions/Offices/Programs)**

102 Grant Avenue  
Santa Fe, NM 87501  
(505)986-6225

The primary goal of the Growth Management Department is to guide future growth and development within Santa Fe County through effective planning, zoning, permitting and enforcement. This is key to making meaningful choices in terms of alternative living environments and life styles, preserving resources for future generations, and to addressing the needs and concerns of the citizens while ensuring their quality of life.

**Planning Division**

The Planning Division plans and implements strategies for managed growth within Santa Fe County to ensure sustainability of resources and to ensure that the development of infrastructure keeps pace with the development of residences and businesses while retaining the highest quality of life possible. The development of the Sustainable Growth Management Plan and corresponding Growth Management Code is a primary function of this Division.

**Geographic Information Systems (GIS) Office**

The GIS Office provides high quality maps and geographic data as well as custom analysis for environmental and other decision making uses for County departments and elected offices as well as the general public. Mapping services include custom federal, state, pueblo, city, school, commercial and private maps. The Office also works with the Office of the County Assessor to ensure accurate mapping for purposes of computer aided mass appraisal (CAMA), and maintains on-line services for non-County users to access mapping and geographic information on a "24/7" basis.

**Building and Development Division**

The Building and Development Division works with the Planning Division and the public to provide permitting and development review services for construction projects in Santa Fe County. The Division provides such other services as zoning, subdivisions, lot splits, business registrations, code enforcement, hydrology, terrain management, special-use permits, and utility allocation to County citizens. The Code Enforcement component of the Building and Development Division patrols and responds to complaints of violations of County ordinances pertaining to land use as well as illegal construction or dumping activities

**Affordable Housing Program**

The Affordable Housing Program provides increased affordable housing opportunities to working families living in Santa Fe County. A broad range of residents will be served in a broad range of income levels through various assistance options. The Program also partners with local area non-profits to provide additional services for clients not meeting County income criteria.

**Regional Planning Authority (RPA)**

To goal of the RPA is to develop a Regional City-County Planning Authority Land Use Plan for the five mile area around the City. The RPA will also develop a land use map to accompany the RPA Land Use Plan that will allow for recommendations to be made on land uses for the City and County in the five-mile area around the City.

**Regional Transit District (NCRTD) Pass-Through**

The Regional Transit Gross Receipts Tax was enacted to provide support for the North Central Regional Transit District. The taxes received by the County are "passed-through" directed to the NCRTD to be used to develop, plan, promote and operate a sustainable, long term regional public transportation system for its member jurisdictions.

**SANTA FE COUNTY**  
**FISCAL YEAR 2011 BUDGET**



**SECTION VII**  
**ORGANIZATION BUDGETS**

**GROWTH MANAGEMENT DEPARTMENT – BUDGETS BY COST CENTER(S)**



FUND TYPE	GENERAL			ENTERPRISE FUND			SPECIAL REVENUE			SPECIAL REVENUE		
	101-0501-412			501-0508-414			231-0515-471 231-0541-471			224-0525 - 0527-446		
<b>GROWTH MANAGEMENT</b>	<b>ADMIN.</b>			<b>REGIONAL PLANNING AUTHORITY</b>			<b>AFFORDABLE HOUSING</b>			<b>ECONOMIC DEVELOPMENT</b>		
POSITIONS	FILLED	NOT FILLED		FILLED	NOT FILLE NOT FILLE D		FILLED	NOT FILLE NOT FILLE D		FILLED	NOT FILLE NOT FILLE D	
POSITIONS	FILLED	NOT FILLED		FILLED	NOT FILLE NOT FILLE D		FILLED	NOT FILLE NOT FILLE D		FILLED	NOT FILLE NOT FILLE D	
GROWTH MGT. DIRECTOR	1		94,982									
ADMINISTRATIVE ASSISTANT	2		76,101									
SECRETARY	1		28,685									
REGIONAL PLANNING DIR.					1							
AFFORDABLE HOUSING ADMIN.							1		70,614			
ADMINISTRATIVE ASSISTANT							1		45,600			
<b>TOTAL POSITIONS</b>	<b>4</b>	<b>0</b>	<b>199,768</b>	<b>0</b>	<b>1</b>	<b>-</b>	<b>2</b>	<b>0</b>	<b>116,213</b>	<b>0</b>	<b>0</b>	<b>0</b>
<b>BUDGET</b>												
SALARY AND WAGES			199,768			-			116,213			0
UNAPPLIED SALARY			41,549			42,115						
TOTAL SALARY & WAGES			241,317			42,115			116,213			
EMPLOYEE BENEFITS			92,185			22,161			55,216			
VEHICLE EXPENSES												
MAINTENANCE			3,320						500			
CONTRACTUAL SERVICES						18,897			5,000			298,966
SUPPLIES			9,000			1,400			1,100			3,500
OTHER OPERATING COSTS			9,785			9,150			700			3,500
SUBSIDIES AND PASS THROUGH									350,000			
CAPITAL EXPENSES												425,520
<b>COST CENTER TOTAL</b>			<b>355,607</b>			<b>93,723</b>			<b>528,729</b>			<b>731,486</b>



# SECTION VII ORGANIZATION BUDGETS

## GROWTH MANAGEMENT DEPARTMENT – BUDGETS BY COST CENTER(S)

FUND TYPE	GENERAL 101-0502-414			GENERAL 101-0512-414			GENERAL 101-0513-414		
GROWTH MANAGEMENT	PLANNING			NATURAL RESOURCES			GROWTH MGT. PLAN		
POSITIONS	FILLED	NOT FILLED		FILLED	NOT FILLED		FILLED	NOT FILLED	
PLANNING MANAGER	1		65,918						
SENIOR PLANNER	4		210,341						
COMMUNITY PLANNER	1	1	50,200						
ENERGY SPECIALIST		1							
<b>TOTAL POSITIONS</b>	<b>6</b>	<b>2</b>	<b>326,459</b>	<b>0</b>	<b>0</b>	<b>0</b>	<b>0</b>	<b>0</b>	<b>0</b>
<b>BUDGET</b>									
SALARY AND WAGES	326,459								
UNAPPLIED SALARY	49,920								
<b>TOTAL SALARY &amp; WAGES</b>	<b>376,379</b>								
EMPLOYEE BENEFITS	138,524								
VEHICLE EXPENSES									
MAINTENANCE									
CONTRACTUAL SERVICES	13,298			40,330					
SUPPLIES	500			675					
OTHER OPERATING COSTS	4,300			5,380			9,206		
CAPITAL EXPENSES									
<b>COST CENTER TOTAL</b>	<b>533,001</b>			<b>46,385</b>			<b>9,206</b>		



**SANTA FE COUNTY**  
**FISCAL YEAR 2011 BUDGET**



**SECTION VII**  
**ORGANIZATION BUDGETS**

**GROWTH MANAGEMENT DEPARTMENT – BUDGETS BY COST CENTER(S)**

FUND TYPE	GENERAL 101-0514-412			GENERAL 101-0516-414			GENERAL 202-0535-454		
	GROWTH MANAGEMENT			BUILDING & DEV.			REGIONAL TRANSIT DIST. PASS-THROUGH		
POSITIONS	FILLED	NOT FILLED		FILLED	NOT FILLED		FILLED	NOT FILLED	
	G.I.S. COORDINATOR	1		75,005					
DATA INTEGRATION ADMIN.	1		73,029						
G.I.S. TECHNICIAN	3		141,949						
ADMINISTRATIVE ASSISTANT	1		36,536						
G.P.S. TECHNICIAN	2		62,524						
BLDG. & DEV. MANAGER				1		71,165			
BLDG. & DEV. SUPERVISOR				1		61,884			
DEV. REVIEW TEAM LEADER				2		103,586			
WATER REVIEW SPEC.				1		57,373			
DEV. PERMIT SPEC.				1		58,255			
DEV. REVIEW SPEC. SENIOR				3	1	123,207			
DEV. REV. SPECIALIST				3		104,786			
CODE ENFORCEMENT INSP. SR.				2		76,663			
CODE ENFORCEMENT INSP.				1		34,611			
PLANS EXAMINER				1		31,366			
<b>TOTAL POSITIONS</b>	<b>8</b>	<b>0</b>	<b>389,042</b>	<b>16</b>	<b>1</b>	<b>722,897</b>	<b>0</b>	<b>0</b>	<b>-</b>
<b>BUDGET</b>									
SALARY AND WAGES			389,042			722,897			-
UNAPPLIED SALARY			0			(11,869)			-
<b>TOTAL SALARY &amp; WAGES</b>			<b>389,042</b>			<b>711,028</b>			
EMPLOYEE BENEFITS			156,393			316,302			
VEHICLE EXPENSES			6,100			13,300			
MAINTENANCE			18,830						
CONTRACTUAL SERVICES			64,659						4,702,500
SUPPLIES			7,929			1,693			
OTHER OPERATING COSTS			750			17,000			
CAPITAL EXPENSES									
<b>COST CENTER TOTAL</b>			<b>643,703</b>			<b>1,059,323</b>			<b>4,702,500</b>